



**Improve Quality
of Life**



**Efficiently
Transport
People**



**Support Economic
Growth, Activity and
Goods Movement**

- ▣ Background
- ▣ New features
- ▣ Troubling trends
- ▣ Positive trends
- ▣ Interesting additions
- ▣ Path forward

Presentation Outline



- ▣ Track progress of *Regional Transportation Plan (RTP)*
- ▣ Use performance-based indicators
- ▣ Highlight data trends
- ▣ Identify “planning gaps”



- ▣ No major structural changes

- ▣ Several new measures
 - ▣ Sensitive natural areas vs. planned projects
 - ▣ Walking distance to East Coast Greenway
 - ▣ Access to recreation modal split (SCORP)
 - ▣ Sea-level rise impacted projects
 - ▣ Road, greenway, bike and sidewalk mileage
 - ▣ Percentage of bike plans implemented

- ▣ Some measures removed

What's New in the 2011 Progress Report?

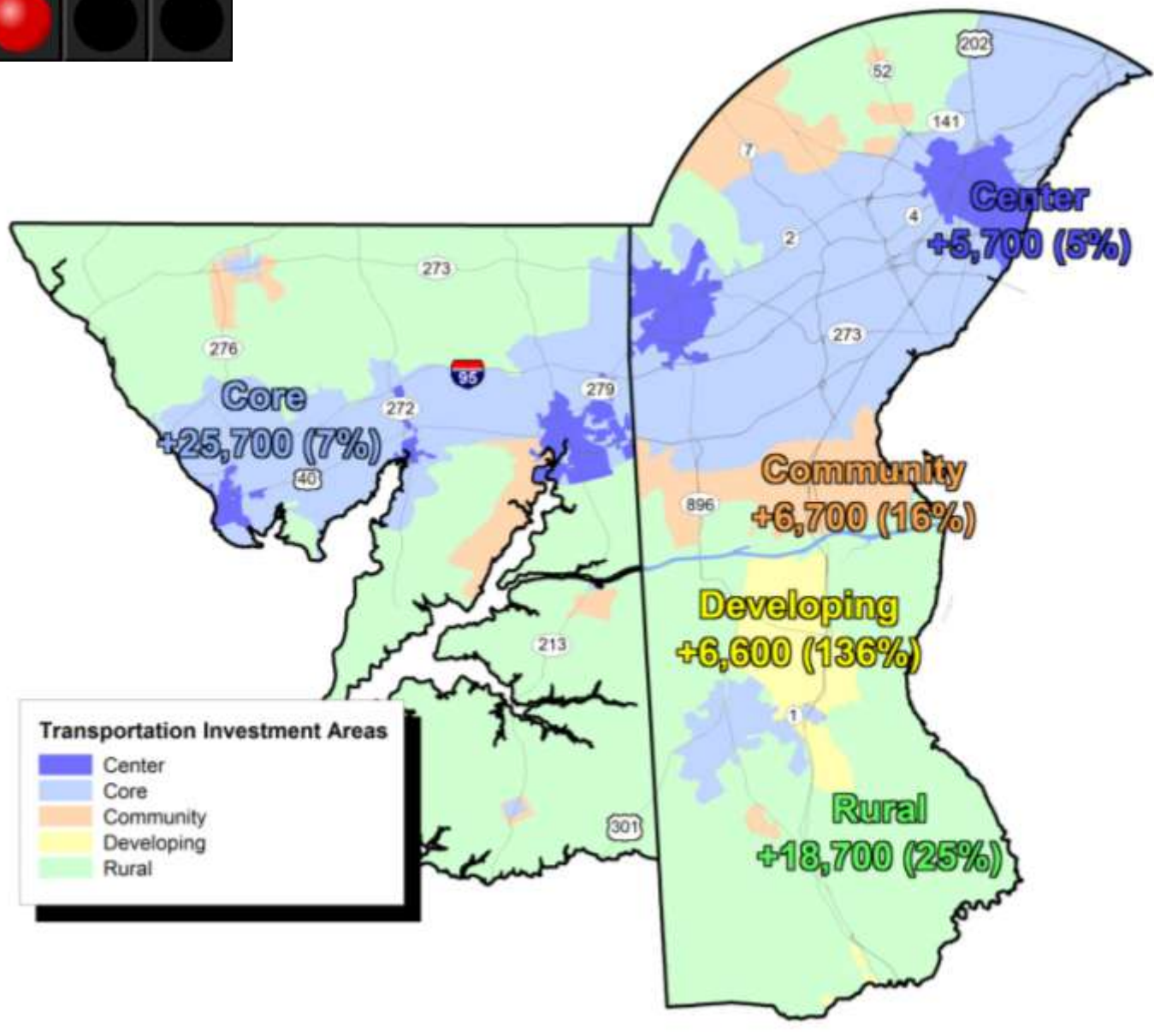
- ▣ Clearer indication of performance
 - ▣ Red, yellow, green light indication for each measure



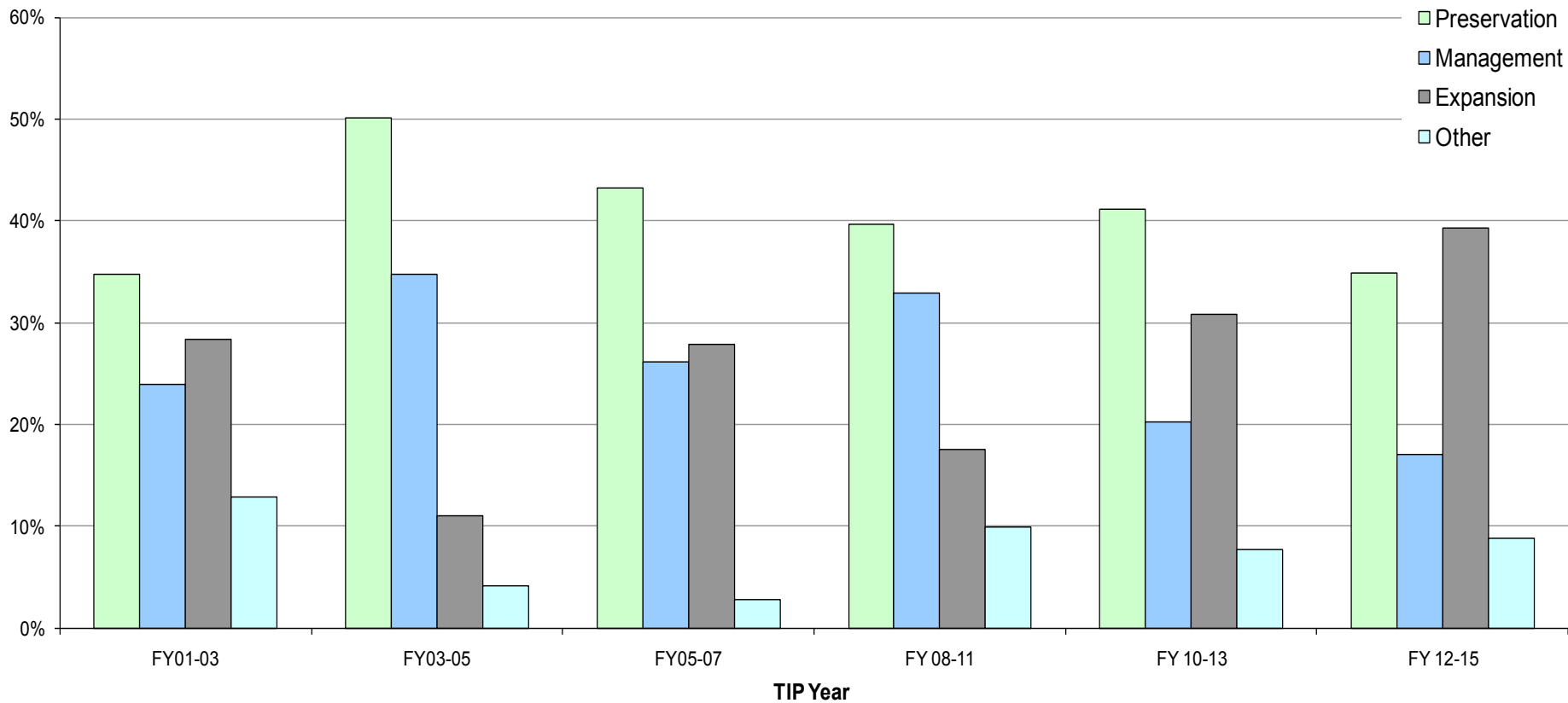
What's New in the 2011 Progress Report?

Troubling Trends





Troubling Trends: Population Growth by TIA 2000-2011



Troubling Trends: % of TIP Allocations by Project Type



Project	Approximate Cost	Anticipated Completion
Newark Regional Transportation Center	\$ 17,398,000	2016+
Third Rail Track Expansion	\$ 42,849,000	2014
Westtown Transportation Improvements	\$ 2,370,000	2015
Wilmington Riverfront*	\$ 34,675,000	2017
TOTAL	\$ 968,029,000	

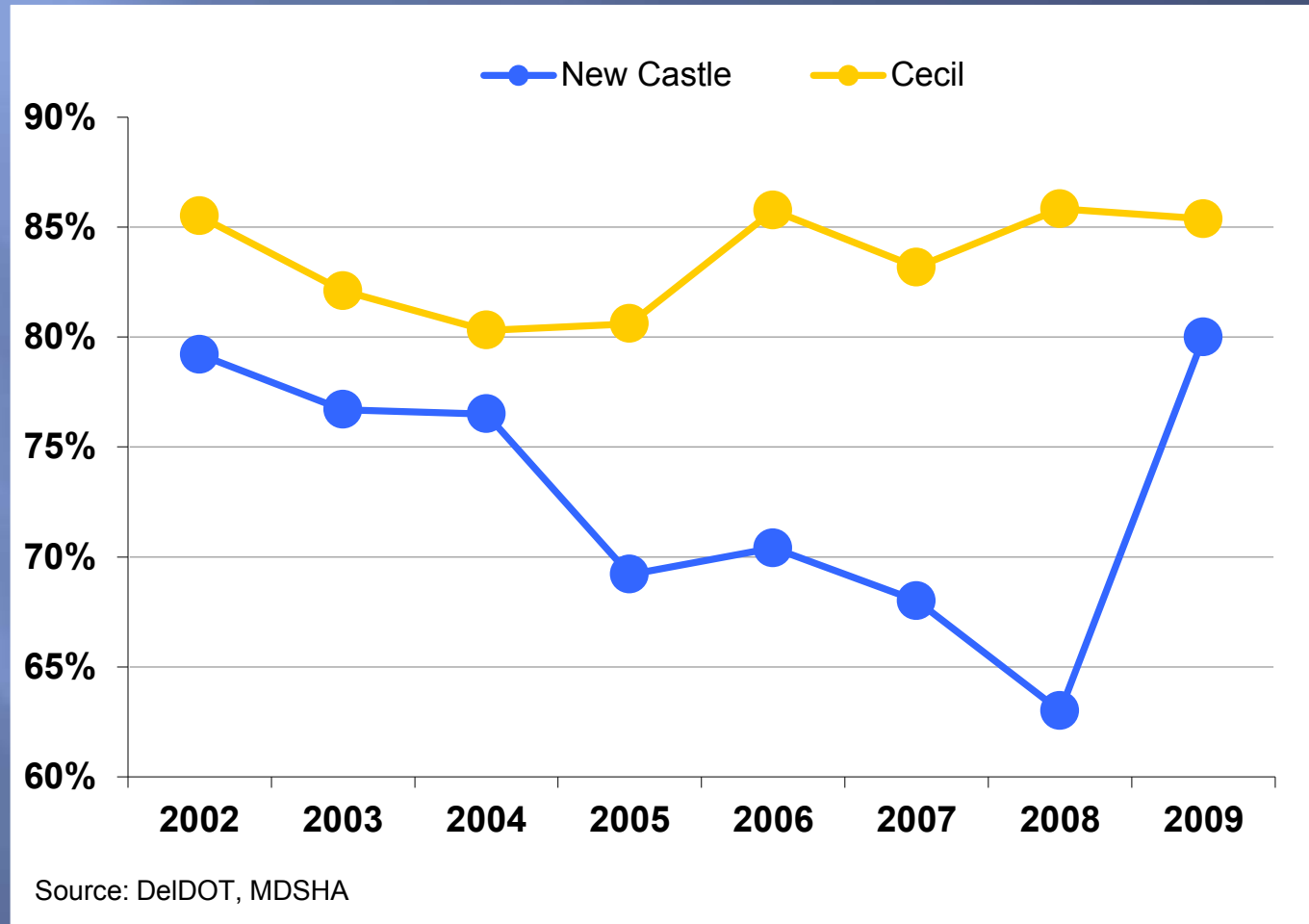
* Includes Christina River Crossing

Source: WILMAPCO's 2012-2015 Transportation Improvement Program

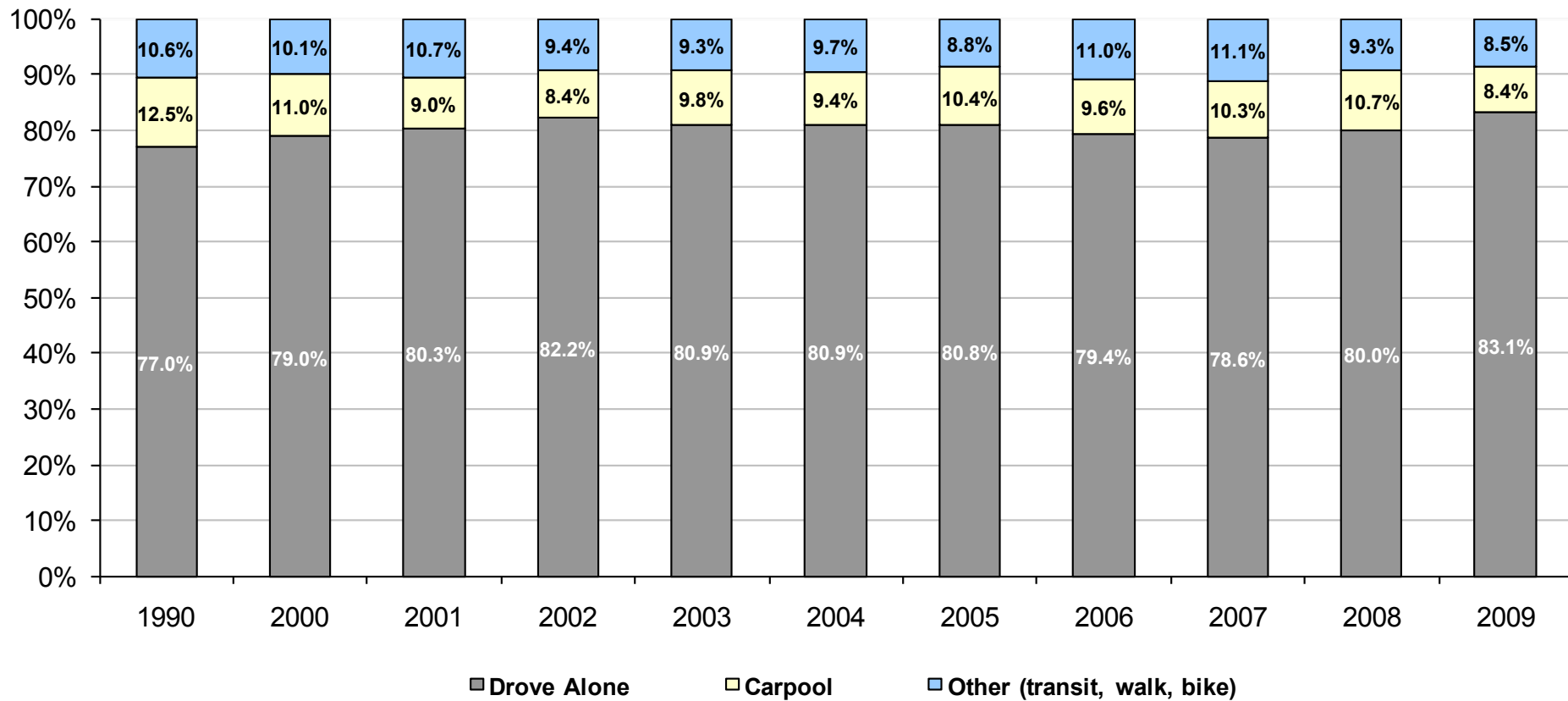
Troubling Trends: TIP Funding by Mode

DeIDOT Goal: 85%

MDSHA Goal: 83%

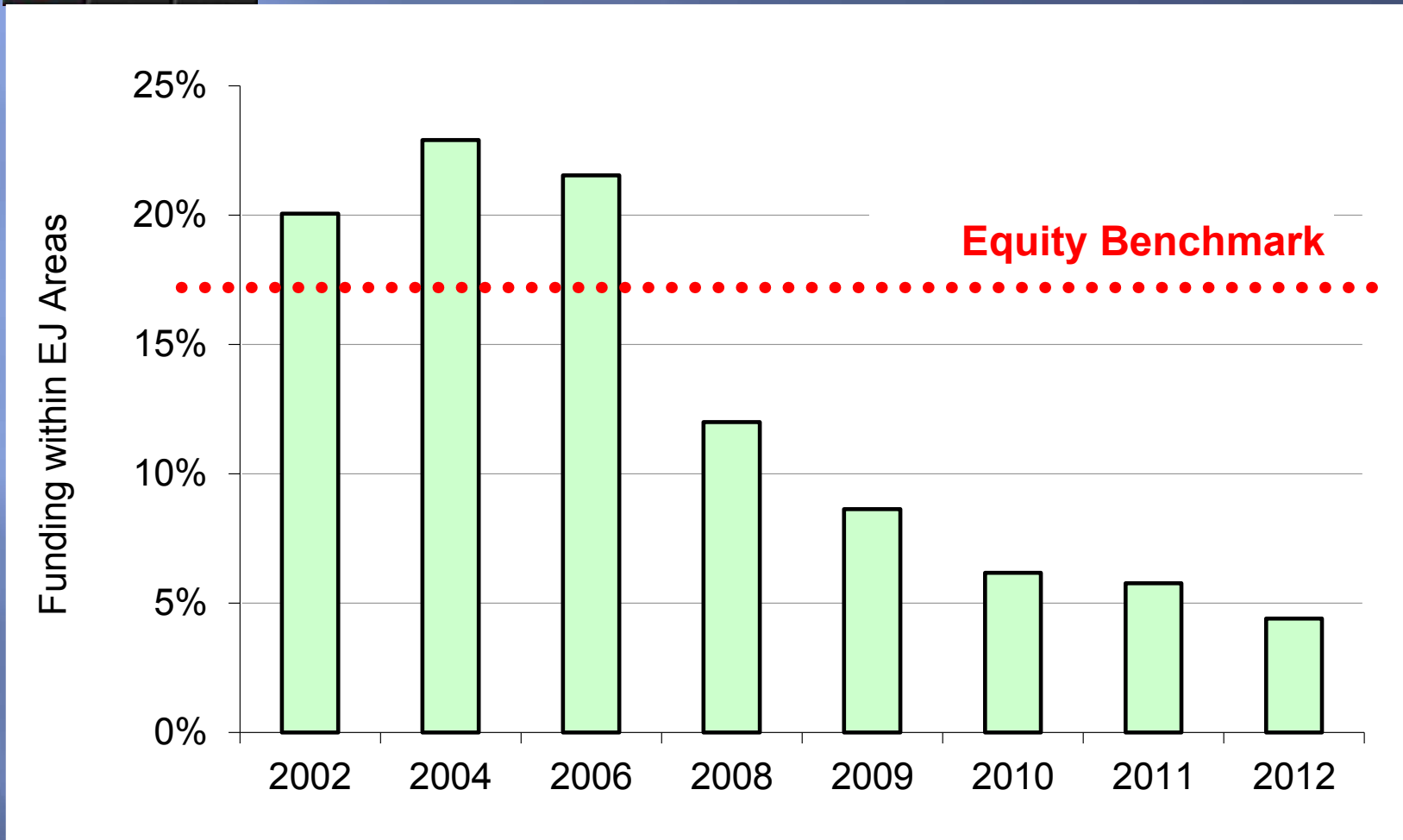


Troubling Trends: State Roads with Acceptable Ride Quality

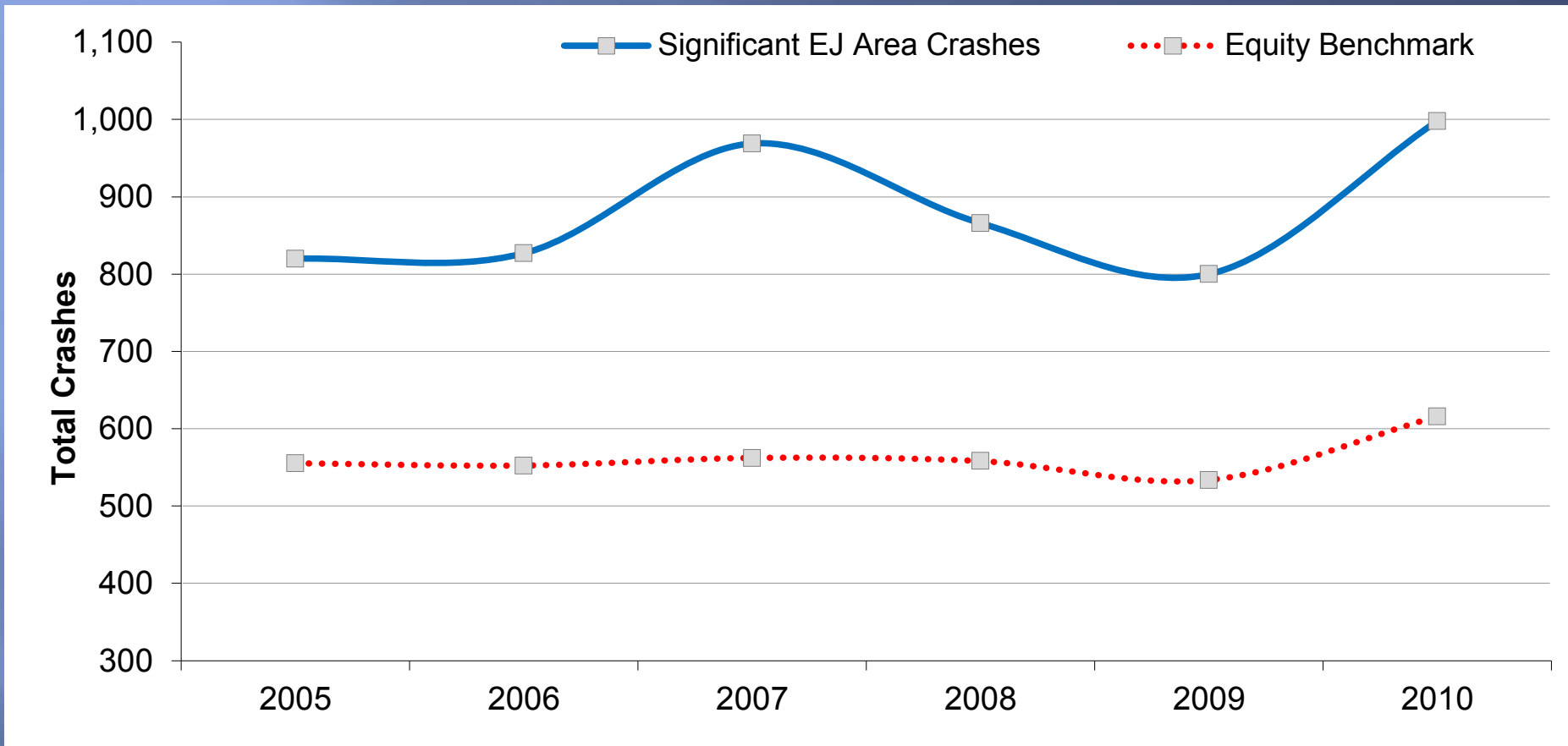


Source: United States Census 1990, 2000; American Community Survey 2001-2009

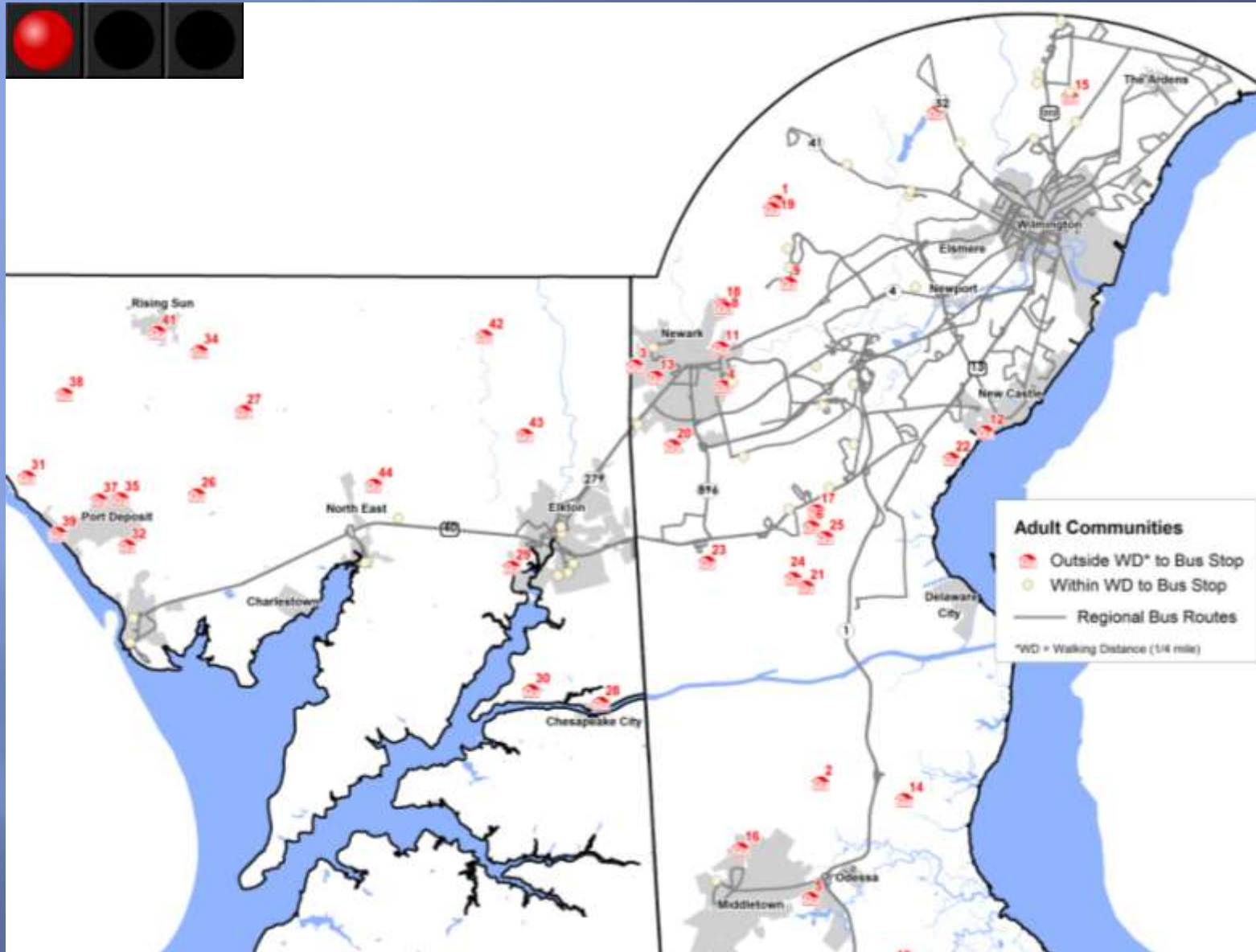
Troubling Trends: Commuter Mode Share, New Castle Co.



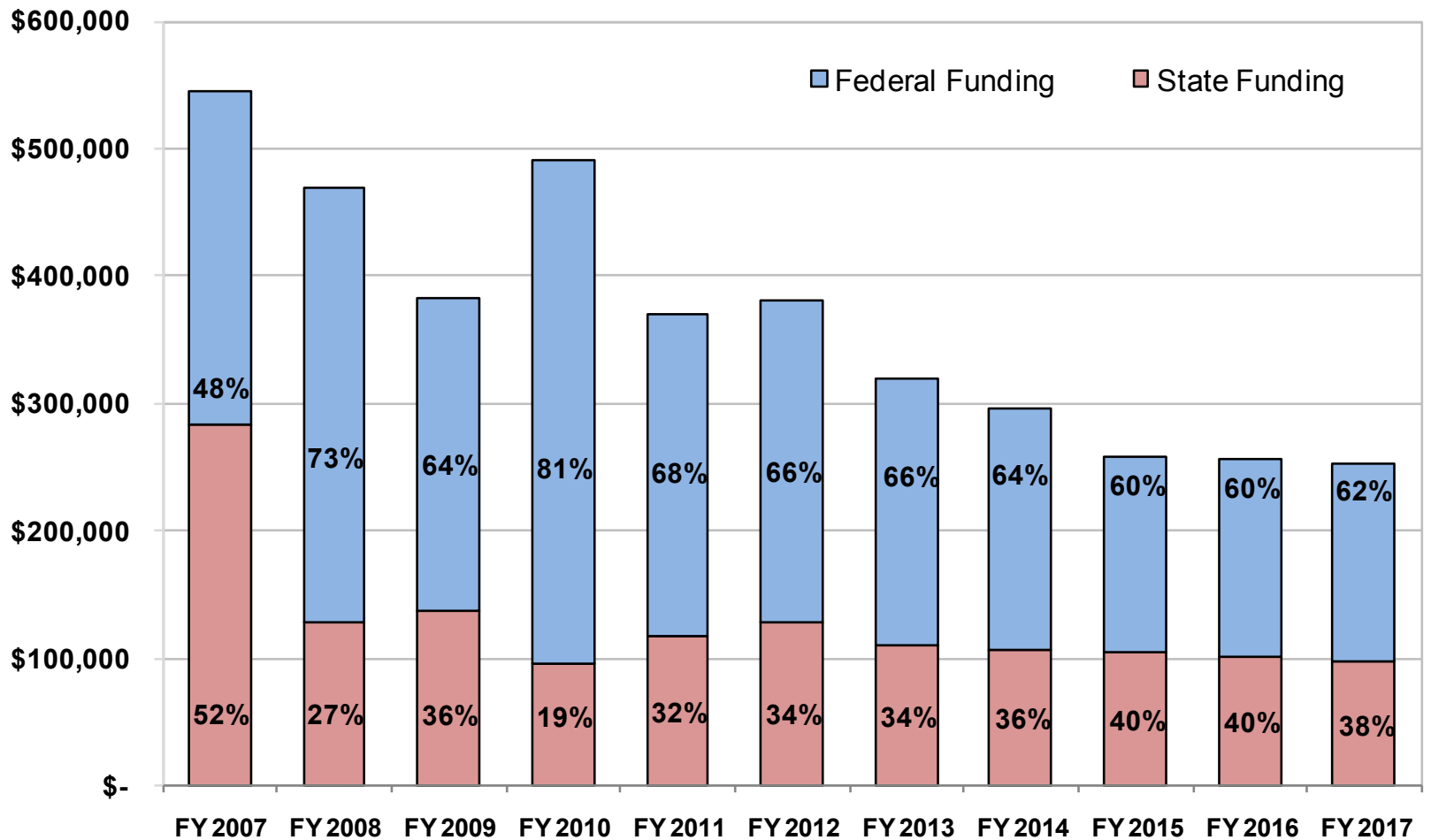
Troubling Trends: TIP Funding Equity Benchmark



Troubling Trends: Vehicle crashes in Significant EJ Areas



Troubling Trends: Age-restricted Comm. Outside Fixed-route Bus Network

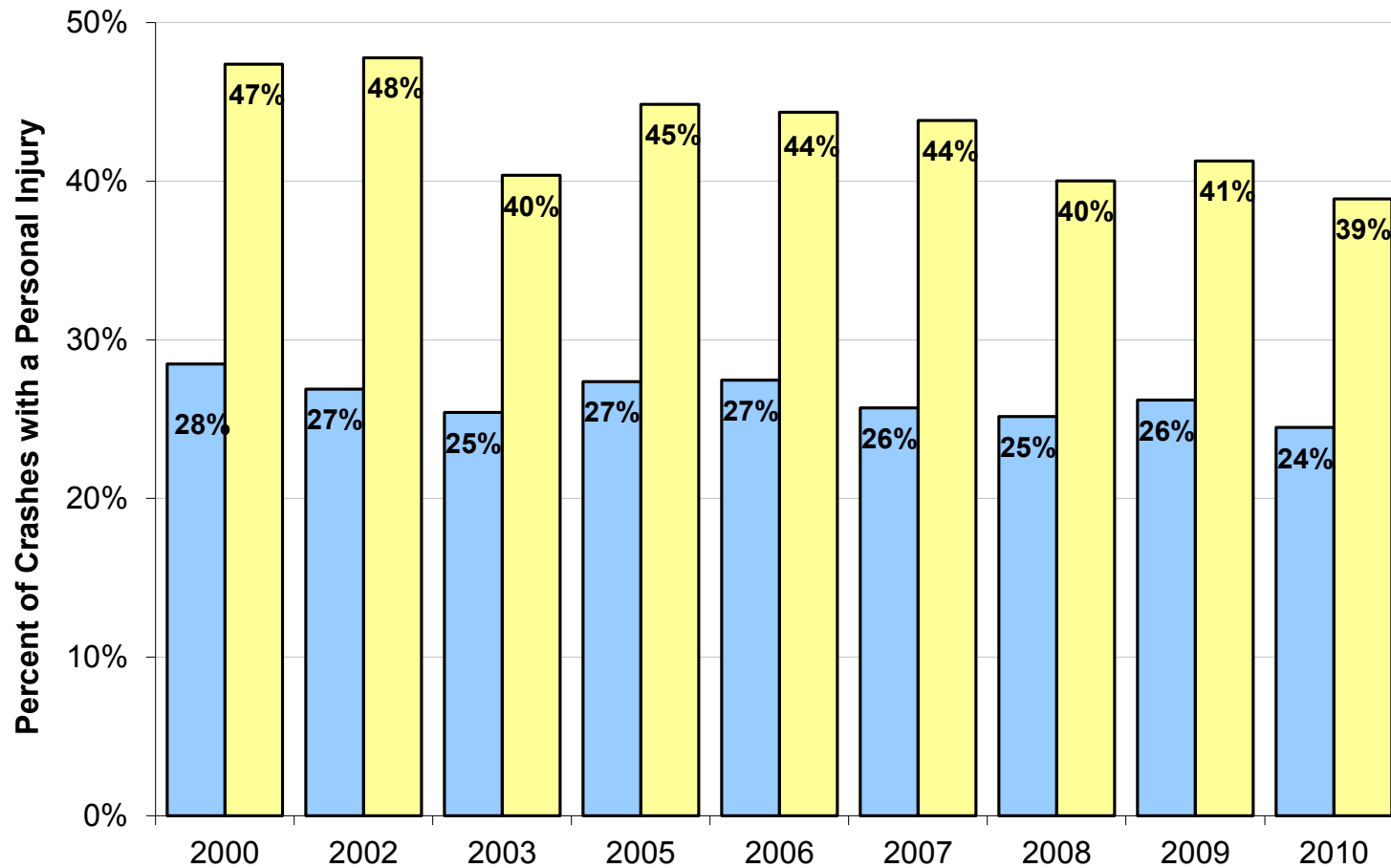


Source: DelDOT Base Financial Plan FY 2010 and FY 2011 \$ x 1,000

Troubling Trends: Projected funding for Capital Projects, Del.

Positive Trends

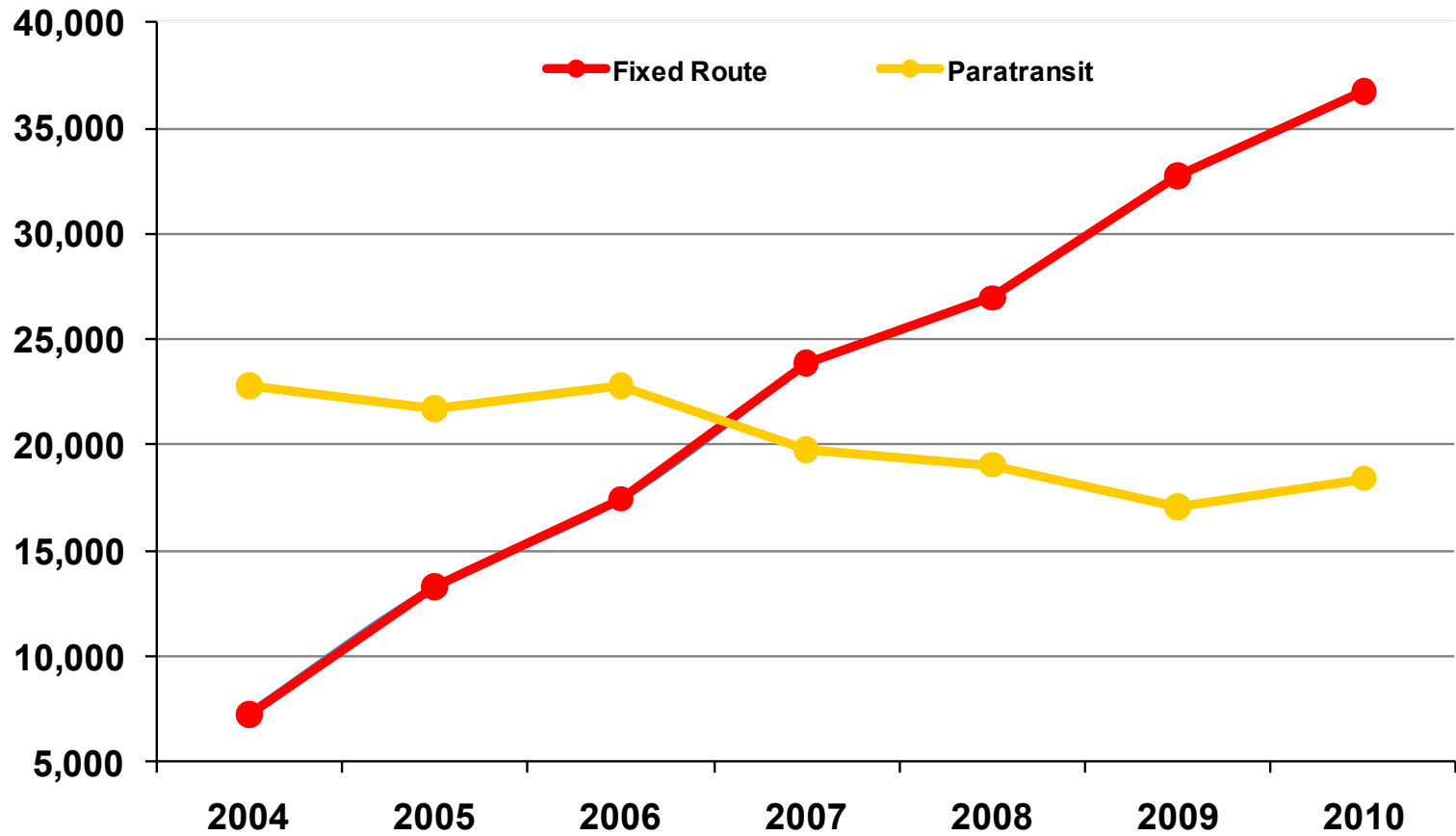




Sources: MDSHA, DE State Police

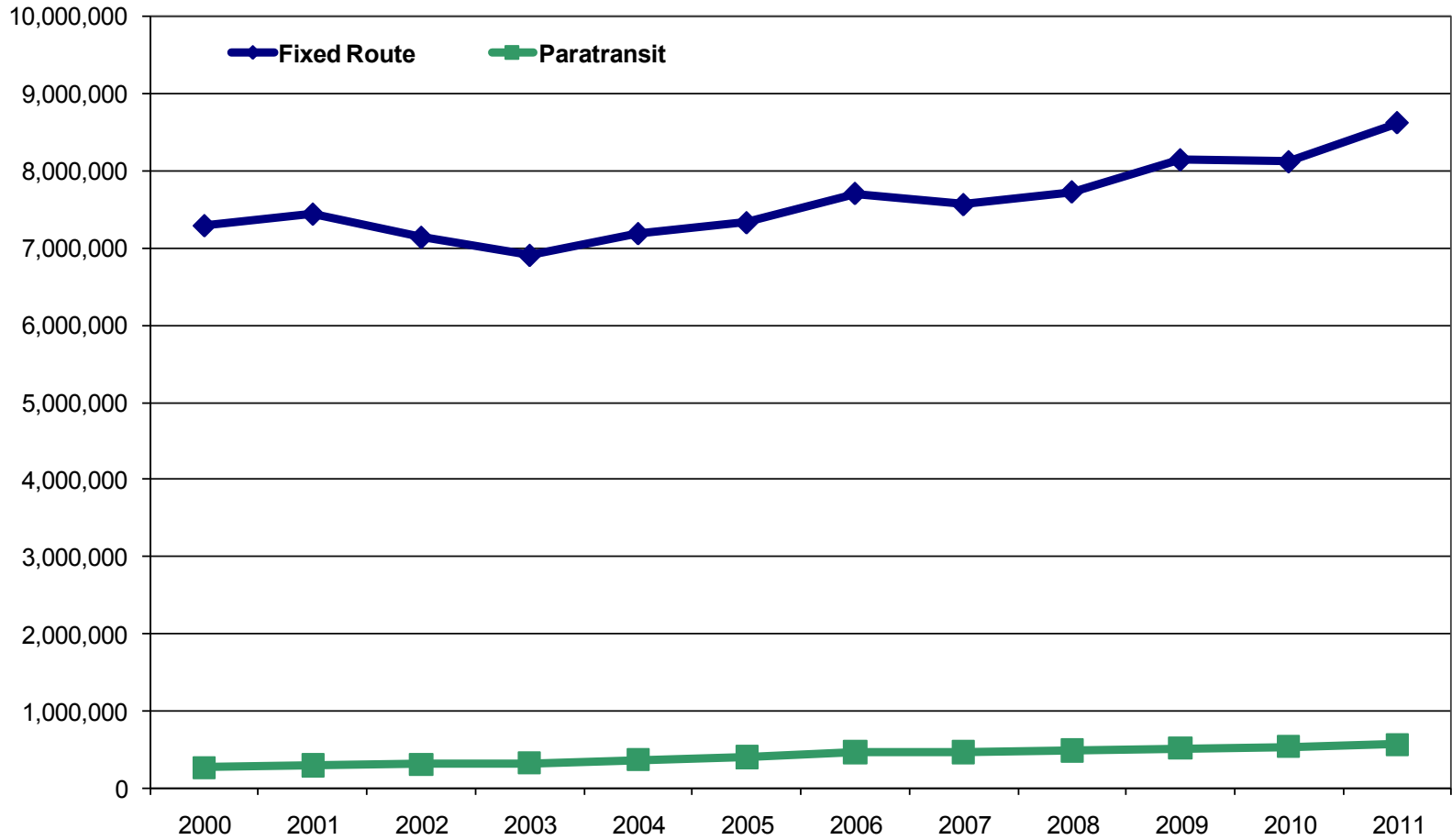
■ New Castle ■ Cecil

Positive Trends: Personal Injury Crashes



Source: Cecil Co. Senior Services and Community Transit

Positive Trends: Transit Ridership, Cecil County

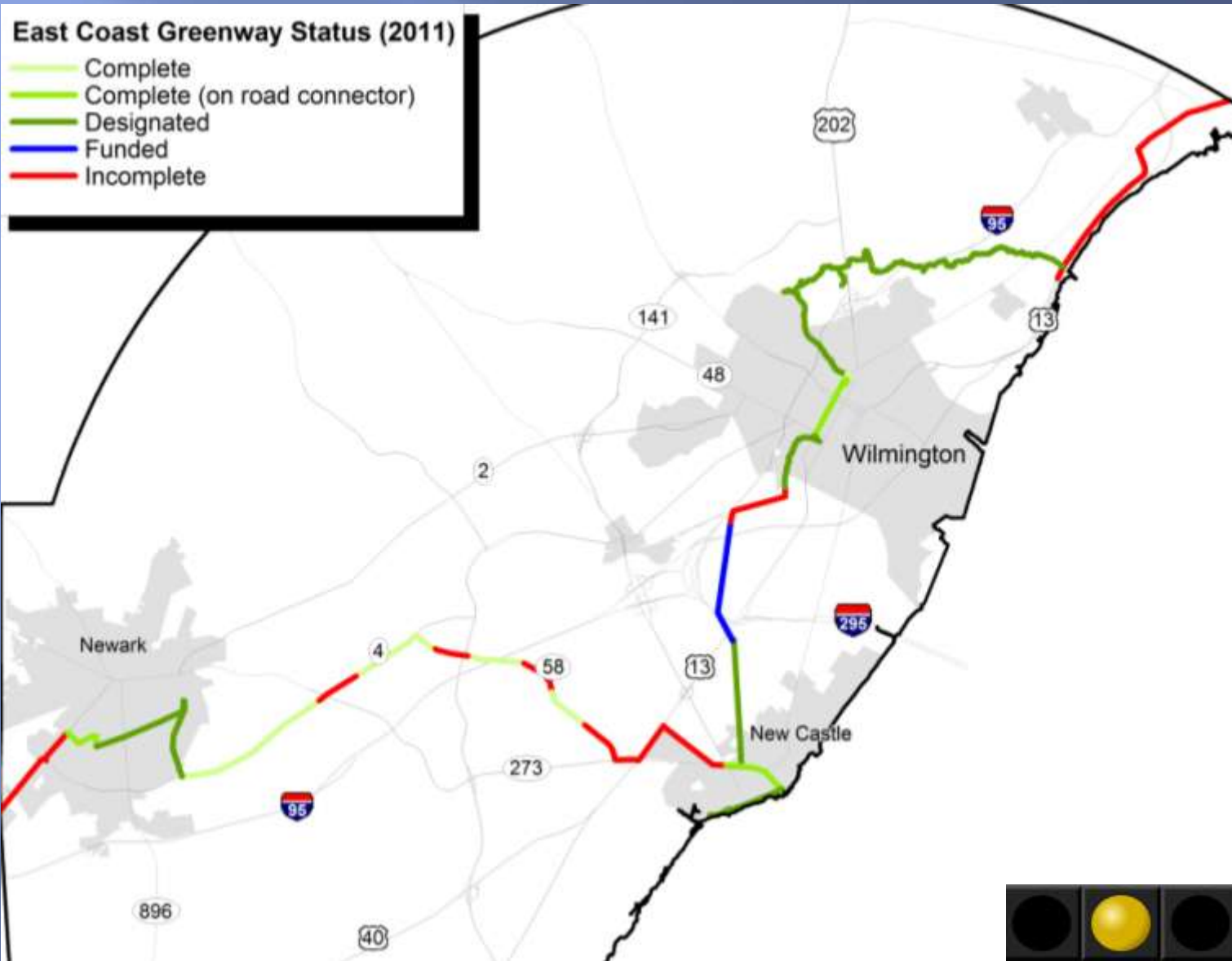


Source: DTC

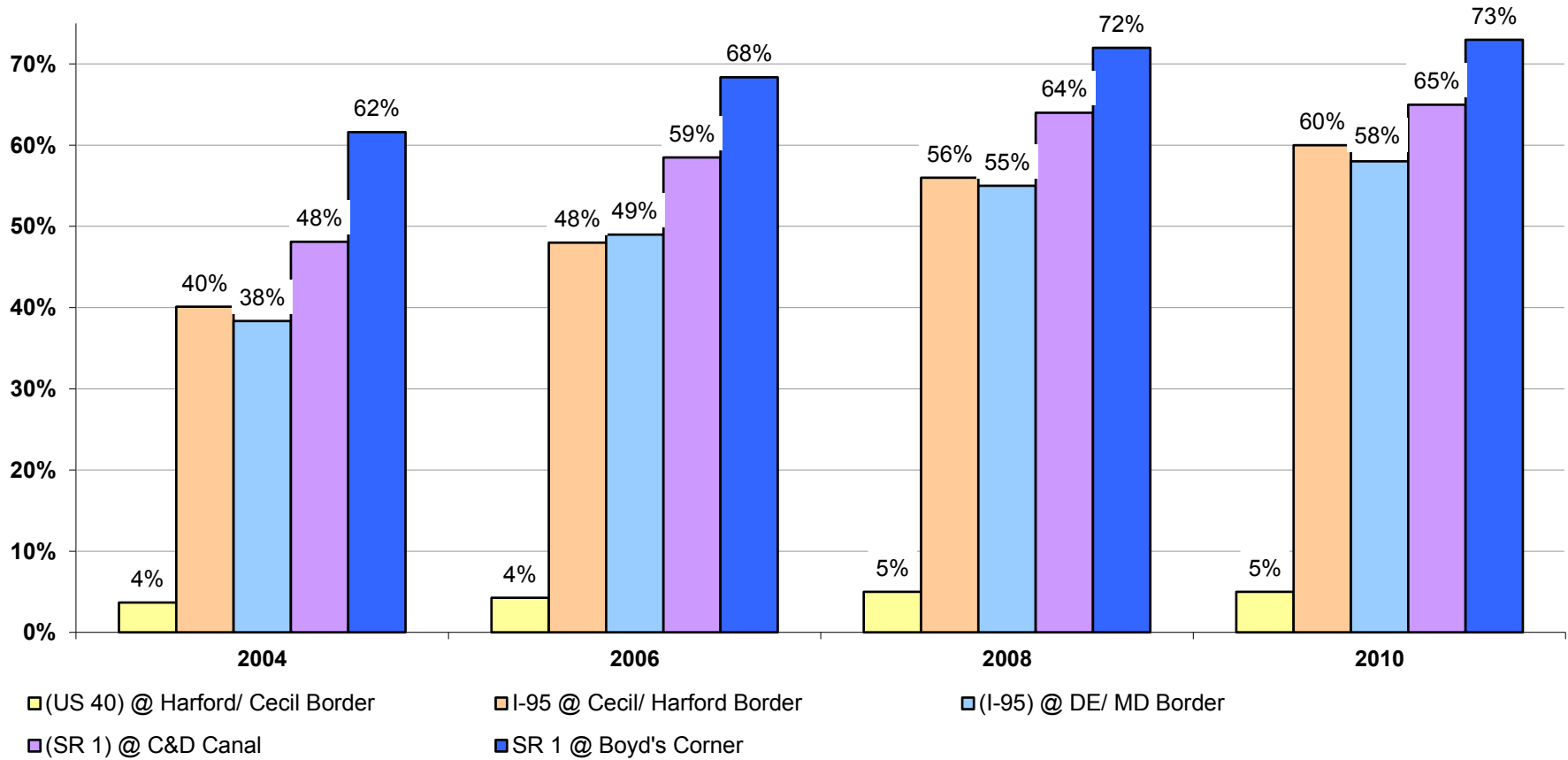
Positive Trends: Transit Ridership, New Castle County

East Coast Greenway Status (2011)

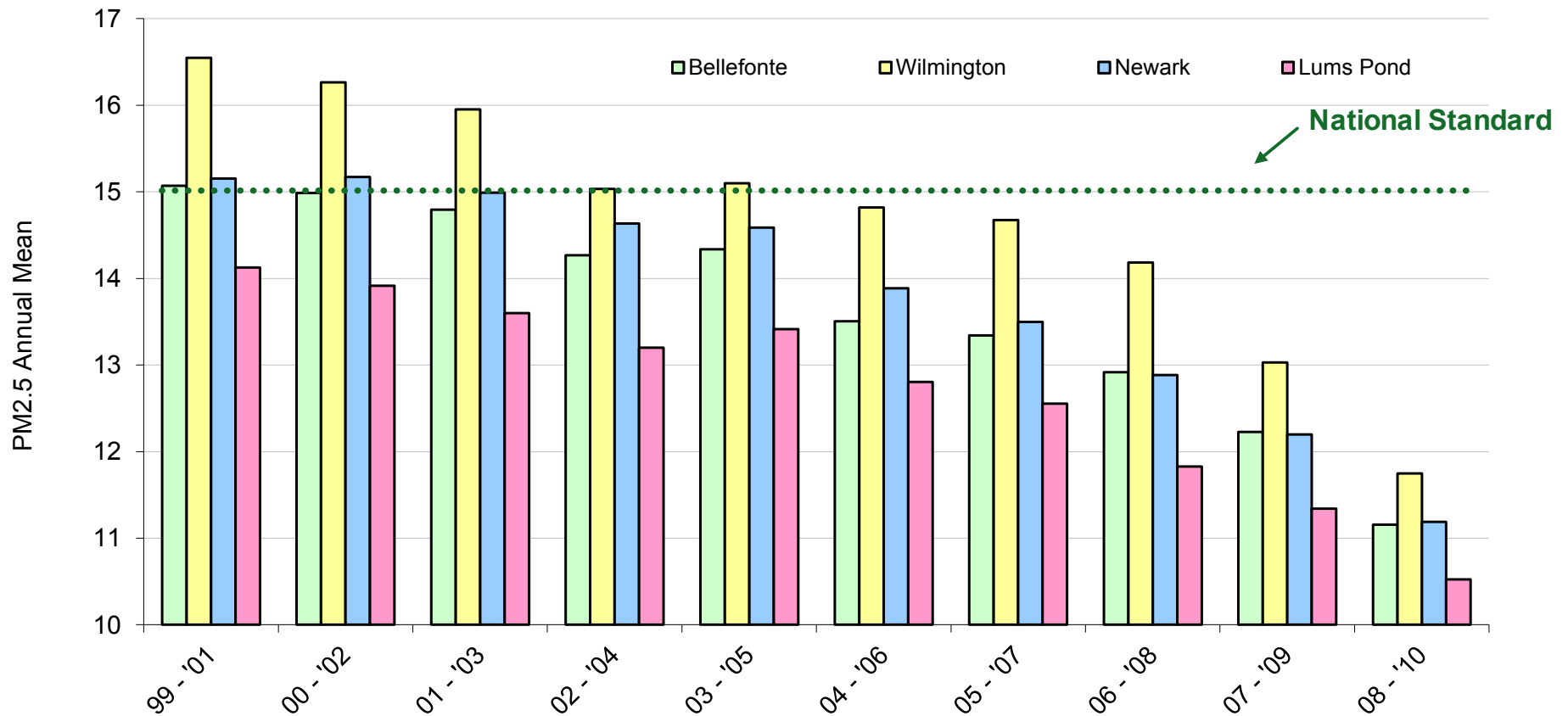
- Complete
- Complete (on road connector)
- Designated
- Funded
- Incomplete



Positive Trends: East Coast Greenway Status



Positive Trends: E-Zpass Use

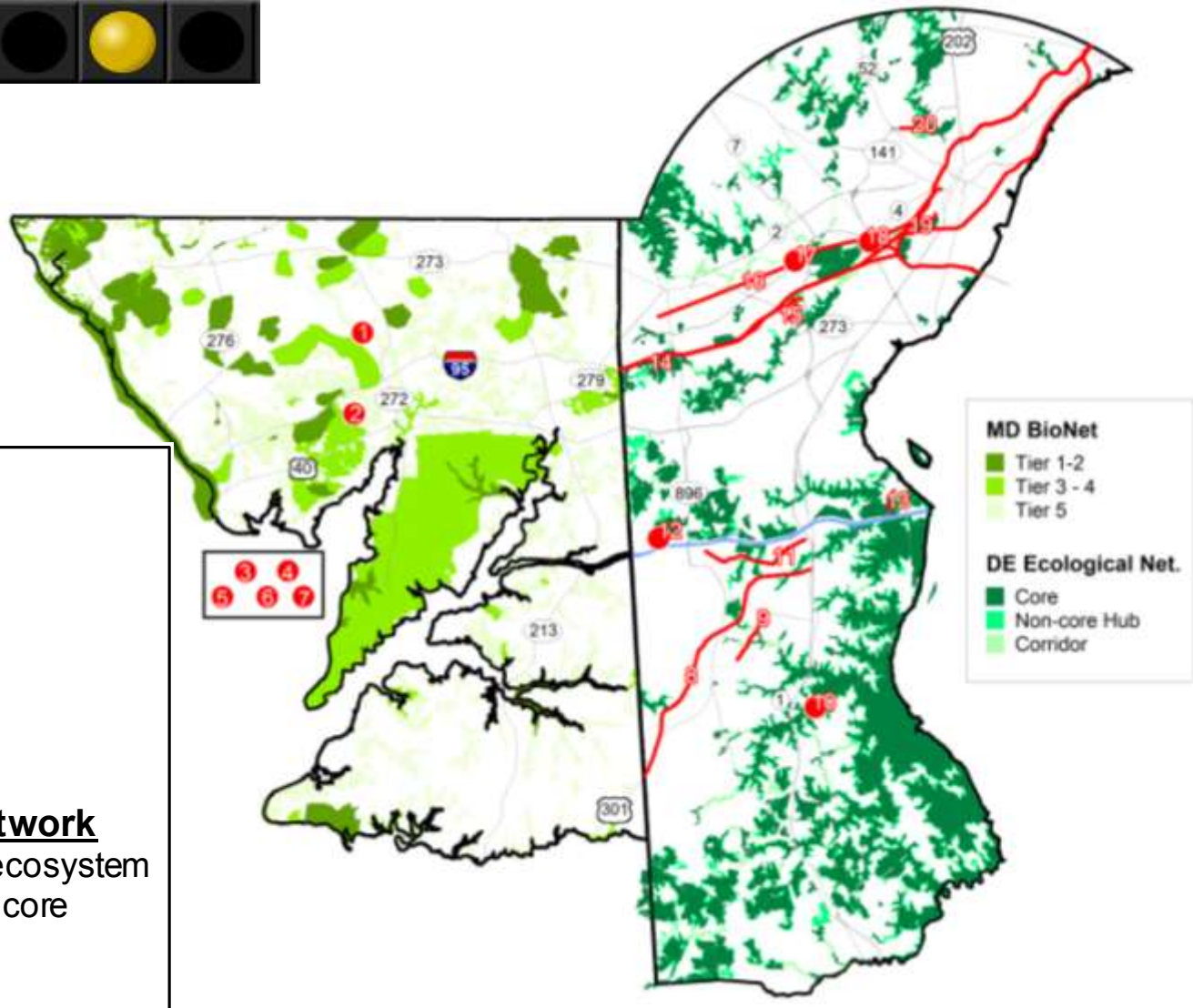


Source: DNREC

Positive Trends: Performance Against the PM2.5 Standard

Interesting Additions





Maryland's BioNet

- Tier 1
 - Tier 2
 - Tier 3
 - Tier 4
 - Tier 5
- ↑
More significant
for biodiversity
conservation

Delaware's Ecological Network

- Core** — naturally-functioning ecosystem
- Non-core Hub** — fragmented core
- Corridor** — link to core areas

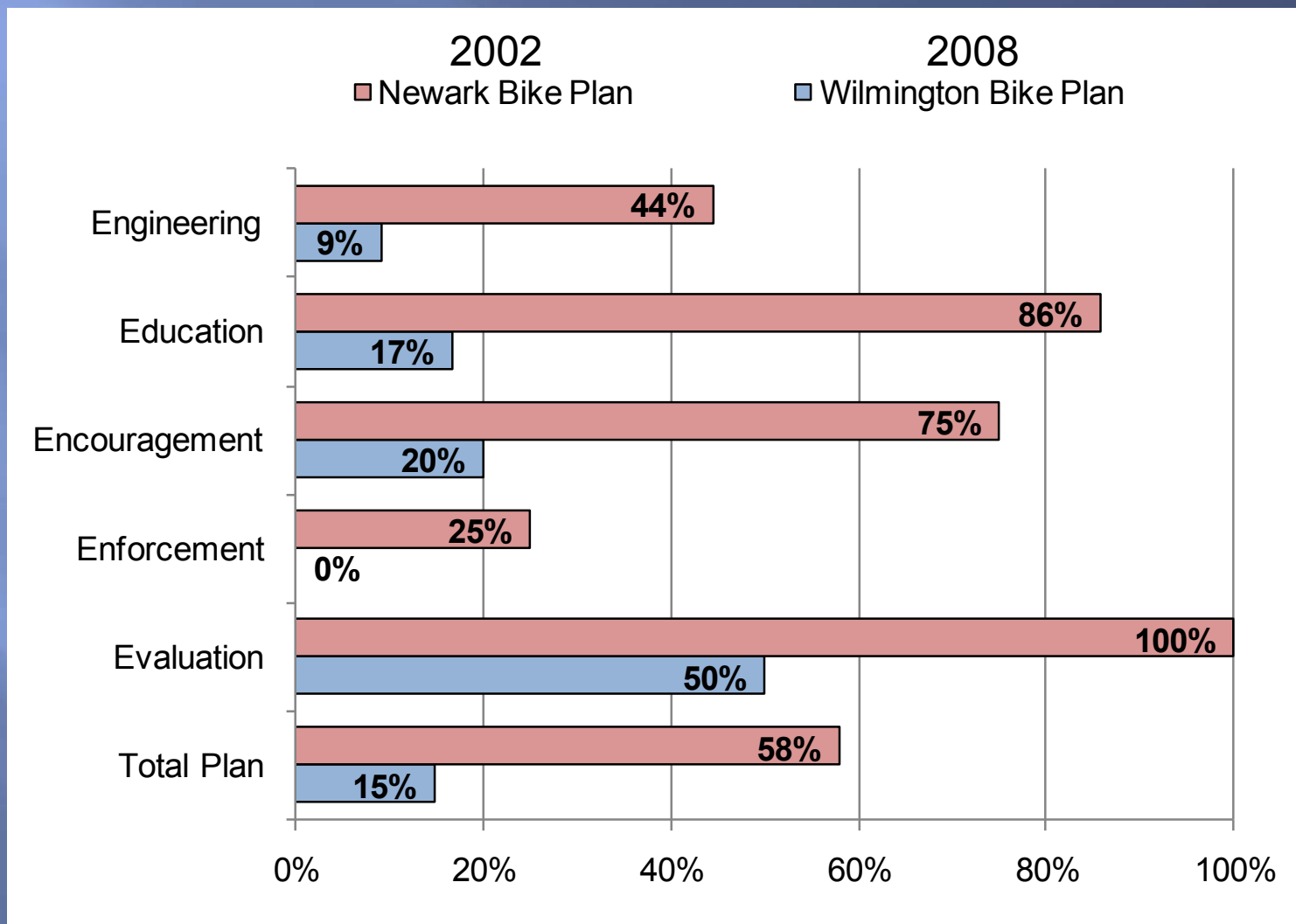
MD BioNet

- Tier 1-2
- Tier 3 - 4
- Tier 5

DE Ecological Net.

- Core
- Non-core Hub
- Corridor

Additions: Projects in Sensitive Natural Networks



Additions: Bike Plan Implementation

Would you say you have many different transportation alternatives to choose from or would you say you have few options to choose from? (Cecil County)

	2006	2007	2008	2009	2010	2011
Many different alternatives	26%	12%	12%	18%	29%	12%
Few Options	5%	87%	86%	79%	70%	85%
Somewhere in between	69%	1%	2%	3%	2%	3%

New Castle County	Certified/ Adopted	Update in Progress
County Comprehensive Plan	2007	X
Arden Village*	2007	X
Ardencroft Village*	2007	X
Ardentown Village*	2007	X
Bellefonte	2007	
Clayton	2008	
Delaware City	2008	
Elsmere	2010	
Middletown	2005	
Newark	2008	
New Castle	2009	
Newport	2008	
Odessa	2006	X
Smyrna	2006	
Townsend	2010	
Wilmington	Various Years	
Cecil County		
County Comprehensive Plan	2010	
Cecilton	2010	
Charlestown	2008	
Chesapeake City	2009	
Elkton	2010	
North East	2004	X
Perryville	2010	
Port Deposit	2008	
Rising Sun	2010	
Source: University of Delaware, Cecil County Office of Planning & Zoning, New Castle County Department of Land Use		
*- Under County Jurisdiction		

Other Updates: Municipal Comprehensive Plans

▣ Complete report

▣ Remaining Schedule

▣ NMTWG: Presentation – December

▣ AQS: Presentation – December

▣ PAC: Presentation – December

▣ TAC: Recommend Endorsement – December

▣ Council: Endorsement – January



wilmapco.org/regional-progress-report

Questions?