

# MARC Service to Delaware and Virginia

April 2021 Update to the  
WILMAPCO PAC

**MDOT**

MARYLAND DEPARTMENT  
OF TRANSPORTATION

MARYLAND TRANSIT  
ADMINISTRATION

Figure 1: Map of the Mid-Atlantic Megaregion and Commuter Rail Lines

# OVERVIEW OF PROJECTS IN HB1236

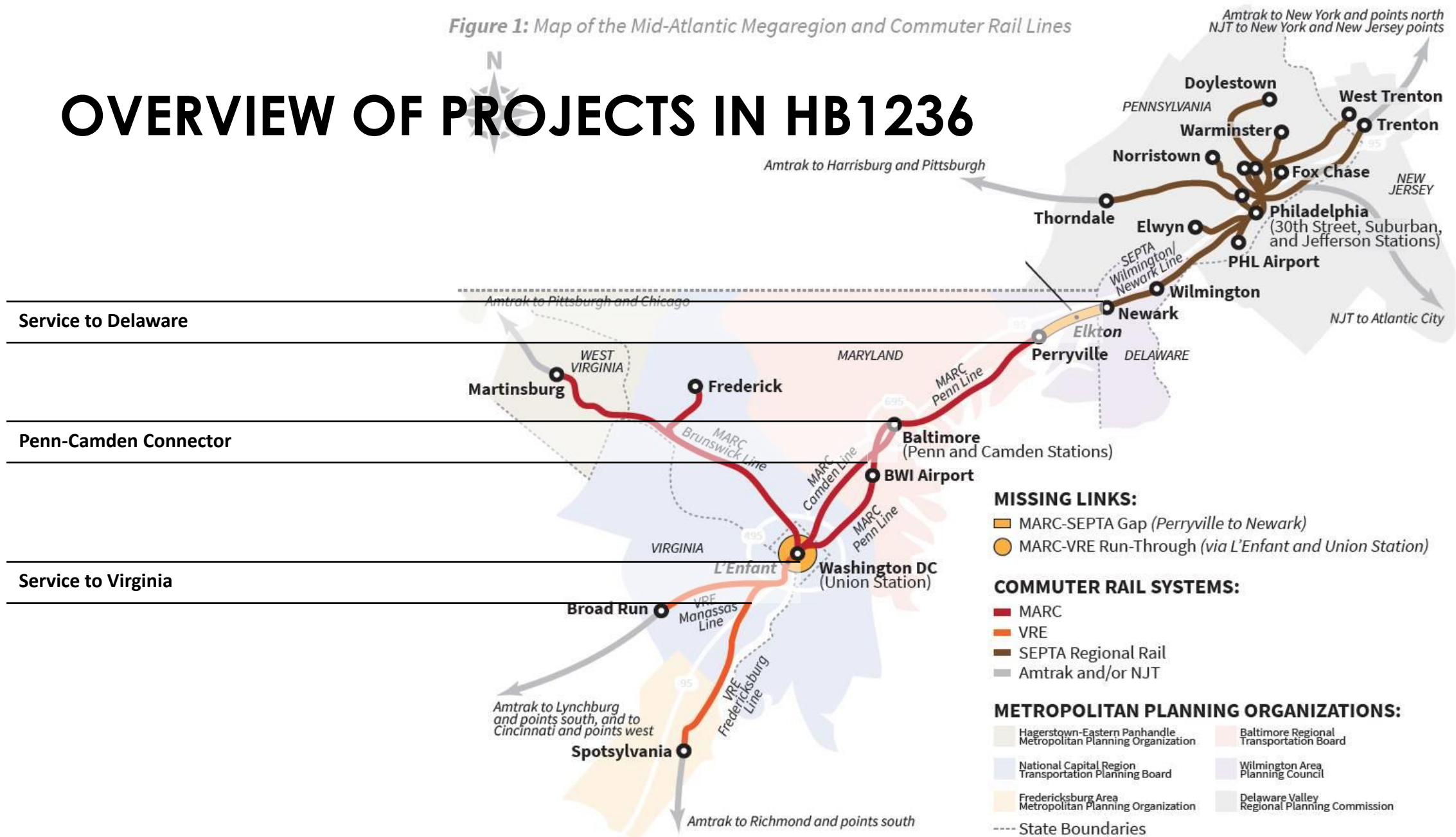


Figure 1: Map of the Mid-Atlantic Megaregion and Commuter Rail Lines

# OVERVIEW OF PROJECTS IN HB1236

## Service to Delaware

- Extending MARC service from Perryville, MD to meet SEPTA service in Newark, DE
- Service to Perryville Today: bi-directional, one midday trip, no weekend service
  - Service to Newark Today: bi-directional, no midday or weekend service
  - Proposed Pilot Service: 2 AM and 2 PM Trains from Perryville to Newark

## Penn-Camden Connector

- Connecting the MARC Camden and Penn Lines via CSX Tracks
- Direct access between the Camden and Penn Lines
  - Access from both lines to Riverside Heavy Maintenance Yard
  - Address Pen Line train storage challenges

## Service to Virginia

- Extending MARC service from Union Station in DC to Alexandria, VA
- All MARC Lines Serve Union Station:
    - Penn and Camden Lines from Baltimore
    - Brunswick Line from Frederick, MD and West Virginia
  - Proposed Pilot Service: 2 AM and 2 PM Trains into Alexandria, VA

---- State Boundaries

# Anticipated Challenges

- Track capacity, facilities, and rolling stock
  - Number and condition of tracks, signals, switches, etc.
  - Size and condition of maintenance and storage facilities
  - Seats and train sets available
- Alignment with negotiating partners' needs and services
  - Host railroads
  - Operators and their unions
  - Out-of-state counterparts
- Maintenance of traffic during planned construction

# Service to Delaware Previous Work

## Completed & Ongoing

- ✓ MARC Cornerstone Plan
- ✓ Central Maryland Regional Transit Plan
- ✓ Elkton Train Station Feasibility Study
- ✓ Perryville Transit-Oriented Dev. Plan
- ✓ Newark Train Station Study
- ✓ Ongoing Coordination w/ DeIDOT, SEPTA, MPOs
  - Statewide Transit Plan and State Rail Plan
  - UMD Ridership Modeling Effort
  - Martin State Airport Projects
  - DeIDOT Newark Regional Transportation Center



# Service to Delaware Next Steps

## Stakeholder Engagement

*April-May*

- Leading Employers
  - Employer and Business Roundtable w/ Greater Washington Partnership (May)
  - Other employers in Delaware
- Labor Representatives
  - Through Amtrak, Bombardier
- ✓ Rider Advisory Committees
  - ✓ MARC Riders Advisory Council (4/8)
  - DeIDOT and SEPTA riders councils (April-May)
- Regional Planning Boards
  - WILMAPCO, DVRPC (April-May)

## Negotiations and Reporting

*May-June*

- Negotiations
  - Draft proposal for Scope and Terms of Agreement
  - 2 AM, 2 PM Trains, Perryville, MD to Newark, DE
  - Requesting meeting with DeIDOT, SEPTA, PennDOT

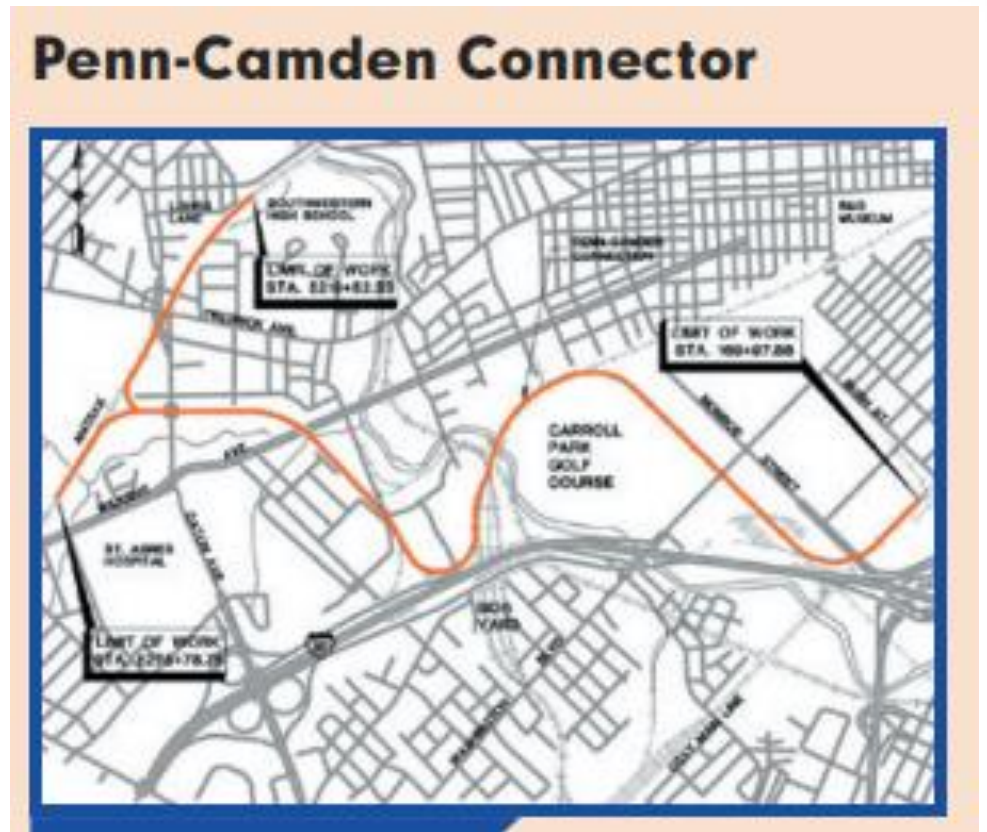
*By December*

- Senate Budget and Taxation Committee Report on or before 12/1/21
  - Stakeholder discussions
  - Best efforts to negotiate
  - Solutions and barriers
  - Statutory changes needed if applicable
  - Additional needs for success

# Penn-Camden Connector Previous Work

## Completed & Ongoing

- ✓ MARC Cornerstone Plan
- ✓ Central Maryland Regional Transit Plan
- ✓ Riverside Yard Expansion
- ✓ Preliminary Planning Study
- Statewide Transit Plan
- State Rail Plan



# Penn-Camden Connector Next Steps

## Feasibility Study

*Spring/Summer*

- Study Kick-off in April
- Camden and Penn Line access to Riverside Yard, Locomotive Repair and Maintenance
- PTC, signaling, Mt. Clare Yard configuration, etc.
- Operational needs and shared use of rail with CSX
- NEPA/Environmental strategies

## Reporting

*Summer/Fall*

- Draft Report

*By December*

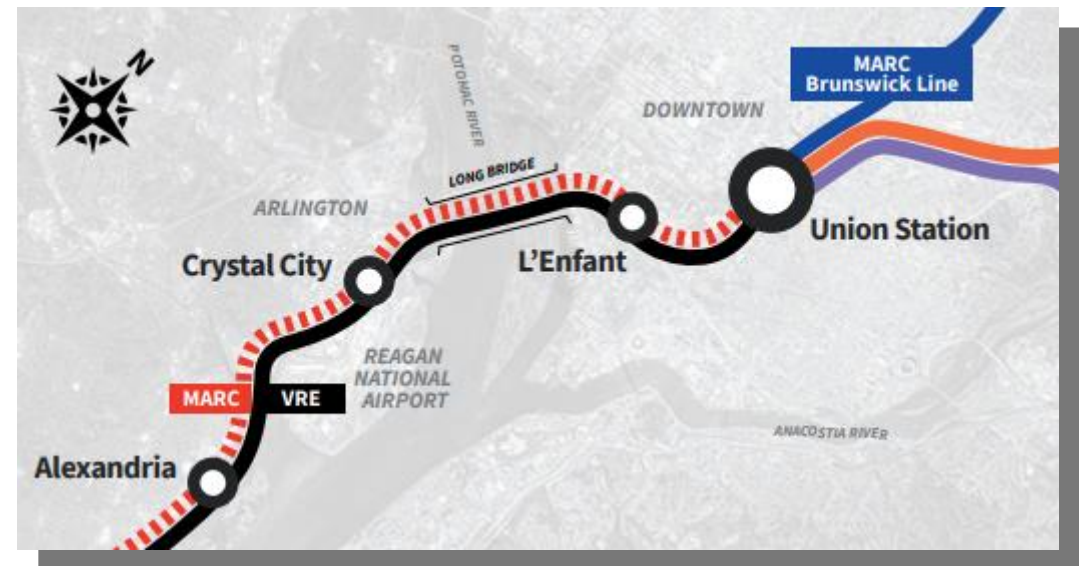
- Finalize and Submit Report to Senate Budget and Taxation Committee on or before 12/1/21
  - Findings and Recommendations



# Service to Virginia Previous Work

## Completed & Ongoing

- ✓ MARC Cornerstone Plan
- ✓ Central Maryland Regional Transit Plan
- ✓ MWCOG Run-through Market Assessment
- ✓ GWP Capital Regional Rail Vision and Technical Reports
- ✓ Ongoing Northeast Corridor Commission
- ✓ Ongoing Coordination w/ DRPT, VRE, etc.
  - Statewide Transit Plan and State Rail Plan
  - Washington Union Station Expansion
  - Winans Track A Improvements



# Service to Virginia Next Steps

## Stakeholder Engagement

*April-May*

- Leading Employers
  - Employer and Business Roundtable w/ Greater Washington Partnership (May)
- Labor Representatives
  - Must request through Amtrak, Bombardier
- ✓ Rider Advisory Committees
  - ✓ MARC Riders Advisory Council (4/8)
- Regional Planning Boards
  - Gathering Technical Advisory Committee from the 2019/20 TPB Market Assessment
  - MWCOG, DRPT, VRE, VPRA, and WMATA

## Negotiations and Reporting

*May-June*

- Negotiations
  - Draft proposal for Scope and Terms of Agreement
  - 2 AM, 2 PM Trains, Union Station to Alexandria, VA
  - Requesting meeting with Virginia DRPT

*By December*

- Senate Budget and Taxation Committee Report on or before 12/1/21
  - Stakeholder discussions
  - Best efforts to negotiate
  - Solutions and barriers
  - Statutory changes needed if applicable
  - Additional needs for success

# Discussion

- For the proposed north and south pilots...
  - What time of day would you look to arrive?
  - What is the value of each proposed service expansion?
  - What other service features are important?
  - What would ideal level of service look like in the long term?
- What questions do you have for MDOT MTA?