

# Village of Marshallton

## *Walkable Community Workshop*



June 9, 2011

Public Advisory Committee  
October 24, 2011



# Marshallton Project

- \* Issues
  - \* High vehicle speeds and heavy traffic volume
  - \* Lack of non-motorized connections
  - \* Comprehensive traffic circulation study needed
- \* Our Approach
  - \* Walkable Community Workshop
  - \* Traffic Circulation Study



# Traffic Circulation Study

- \* Kicked-off August 11<sup>th</sup>
- \* Build computer model of area traffic flow (including SR 2)
  - \* Study tweaks to signalization, addition of stop signs, etc.
- \* Generate *innovative* traffic-calming ideas
- \* WCW in anticipation of this larger process

# Workshop Overview

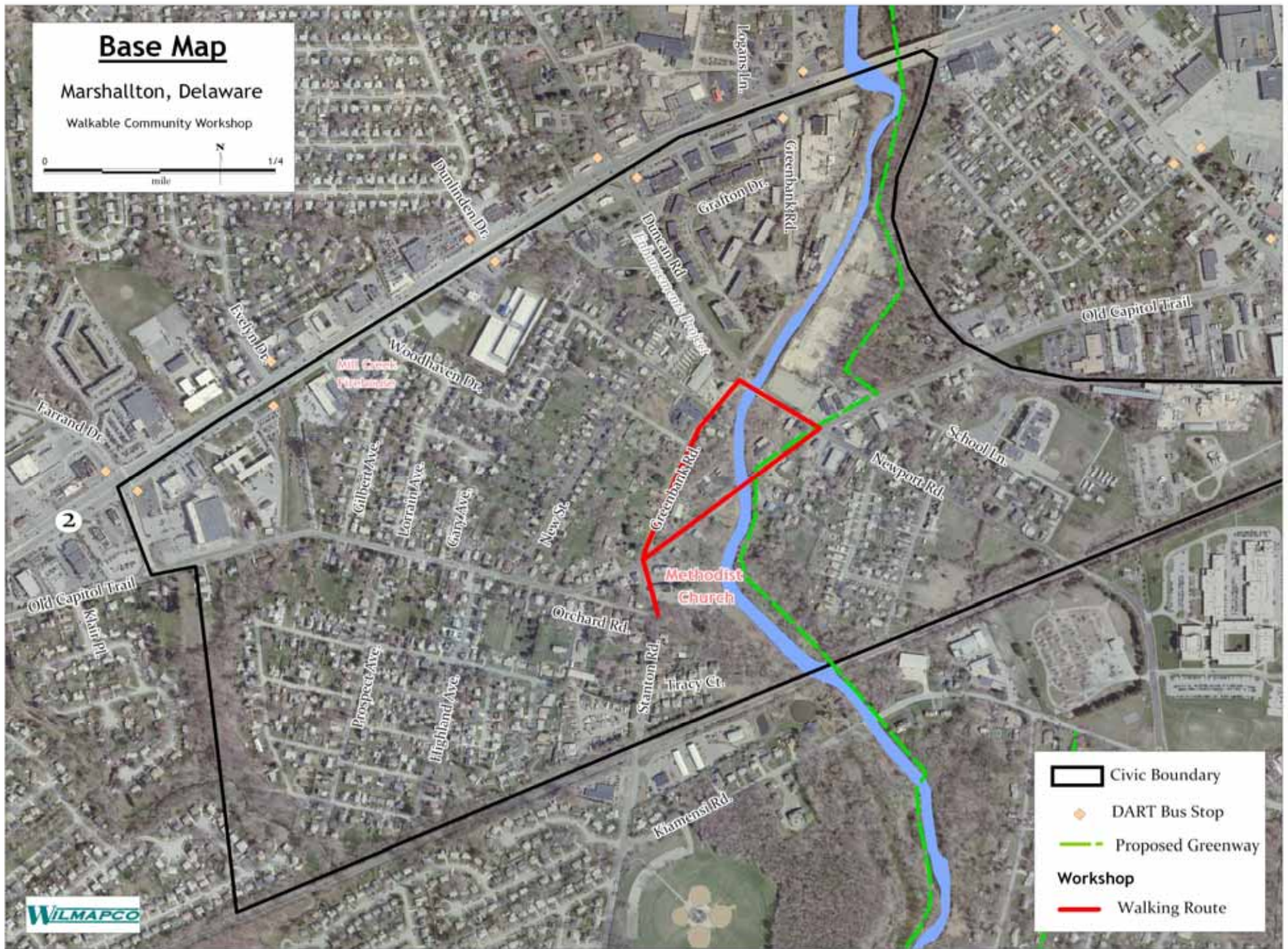
- \* Background Presentation
- \* Walkability Presentation
- \* The Walk (real and virtual)
- \* Mapping Exercise
- \* Report Generation



# Base Map

Marshallton, Delaware

Walkable Community Workshop



- Civic Boundary
- DART Bus Stop
- Proposed Greenway
- Workshop**
- Walking Route

# Key Walkability Issues

- \* Connectivity
  - \* Parks and activity centers
- \* Greenway opportunity (Lower Red Clay Valley)
- \* Safety (crossing the road)
- \* Busted/missing infrastructure



# Connectivity



# Greenway Opportunity



# Safety



# Broken Infrastructure



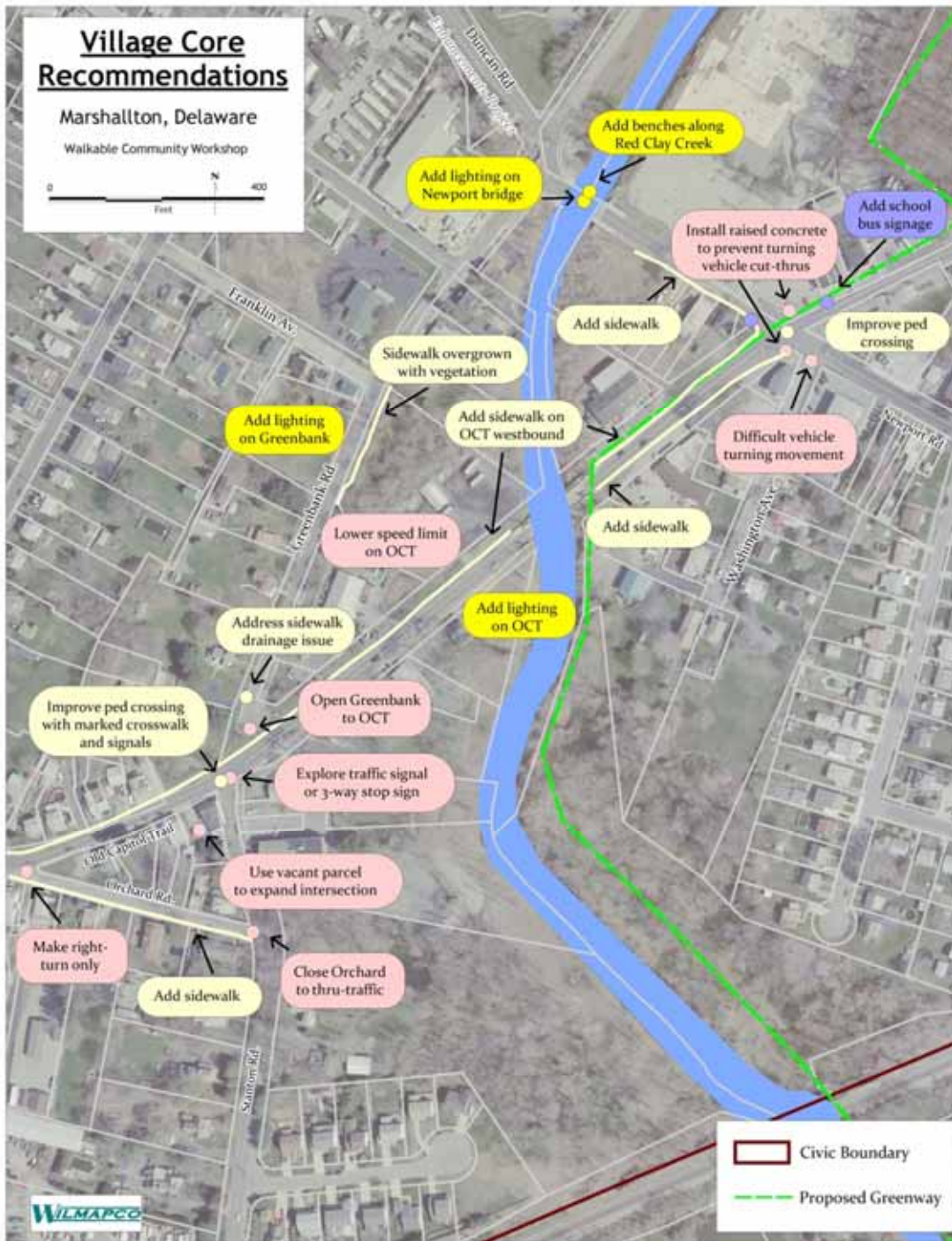
# Mapping Exercise



# Village Core Recommendations

Marshallton, Delaware

Walkable Community Workshop





# Next Steps

- \* Proceed with short-term recommendations
  
- \* Proceed with Circulation Study
  - \* Data collection (September - October)
  - \* Public meeting (November)
  - \* Traffic modeling (November – January)
  - \* Alternatives development (February – March)
  - \* Public meeting (April)
  - \* Report development (May)
  - \* Final Report (June 2012)



[wilmapco.org/marshallton](http://wilmapco.org/marshallton)

