

An aerial photograph of a city, likely Wilmington, Delaware, showing a dense urban grid, a river, and a highway. A dark purple semi-transparent rectangle is overlaid on the right side of the image, containing white text.

BRIDGING I-95: CONNECTING THE COMMUNITY

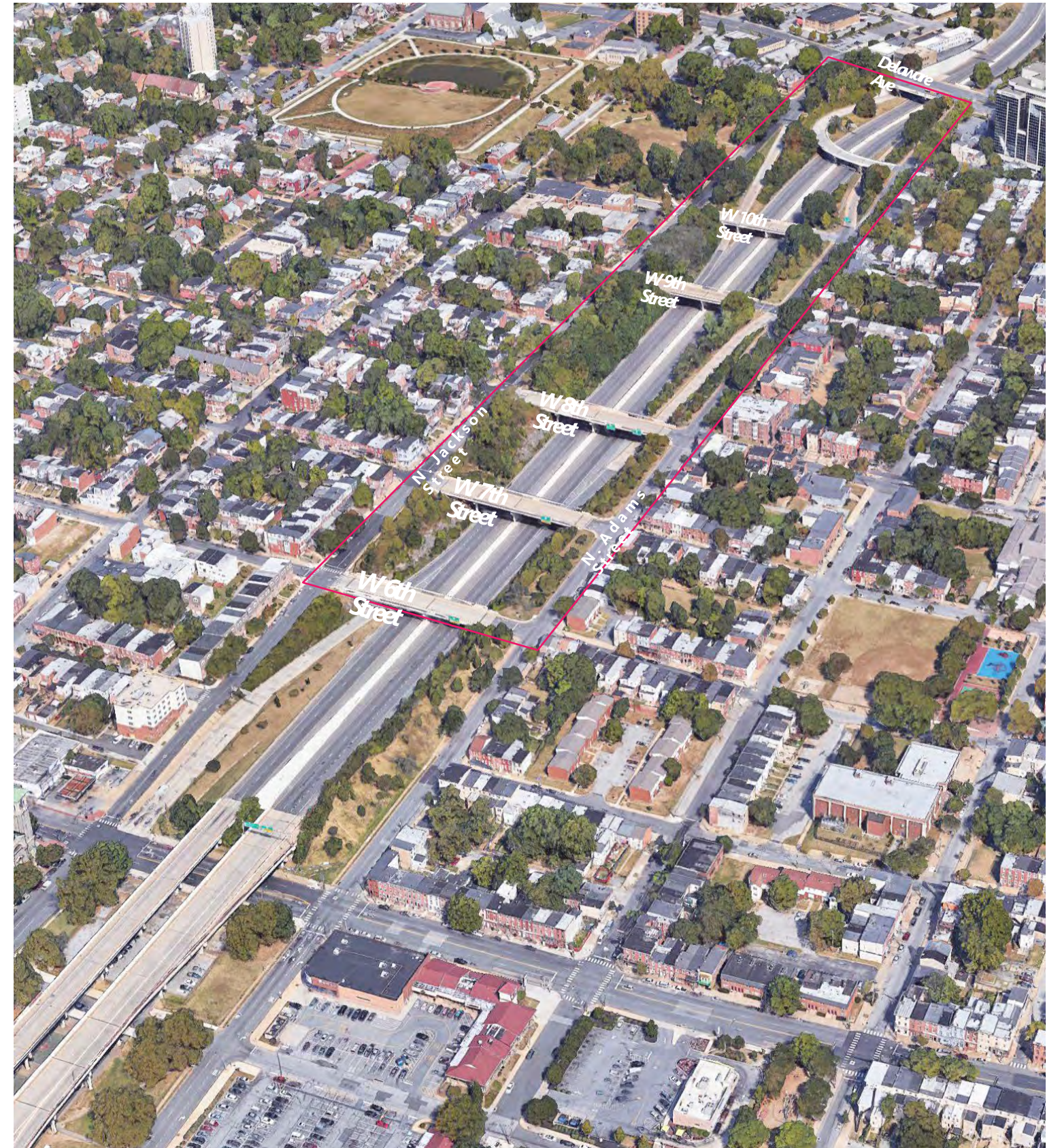
CAP FEASIBILITY STUDY
PAC UPDATE
February 7, 2022

ADVISORY COMMITTEE

- U.S. Senator Thomas Carper
- U.S. Senator Chris Coons
- U.S. Representative Lisa Blunt Rochester
- FHWA
- State Senators: Sarah McBride, Elizabeth Lockman, Darius Brown
- State Representatives: Gerald Brady, Nnamdi Chukwuocha, Sherry Dorsey Walker
- Delaware Transit Corporation (DTC)
- New Castle County
- City Council members: Michelle Harlee 4th, Bregetta Fields 5th, Nathan Field 8th
- Neighborhood Planning Council: 4th, 5th, 8th
- Downtown Visions
- United Neighbors
- Westside Grows Together
- Latin American Community Center
- BlindSight Delaware
- Bike Delaware
- West Center City Neighborhood Associations
- Westside Neighborhood Coalition
- Cool Spring/Tilton Park Neighborhood Coalition
- Trinity Vicinity Neighborhood Association
- Trinity Episcopal Church
- Hilltop Lutheran Church

PROJECT TEAM

WILMAPCO DeIDOT/DTC
City of Wilmington Administration



CONSULTANT TEAM

Hargreaves Jones

PRIME / LANDSCAPE
ARCHITECTURE



Mary Margaret Jones
Design Lead



Kirt Rieder
Project Manager /
Principal-in-
Charge



Aubrey Tyler
Job Captain /
Designer

MEETING
FACILITATO
R



Toyin Ogunfolaju
Jacobs
Engineering

JOHNSON, MIRMIRAN
& THOMPSON (JMT)

ENGINEERING & MOBILITY
WILMINGTON, DE



David DuPlessis
Principal-in-Charge



Angie Hernandez
Project Manager



Corey Hull
Structures
Engineering
Lead



Greg Potens
Structures Engineer



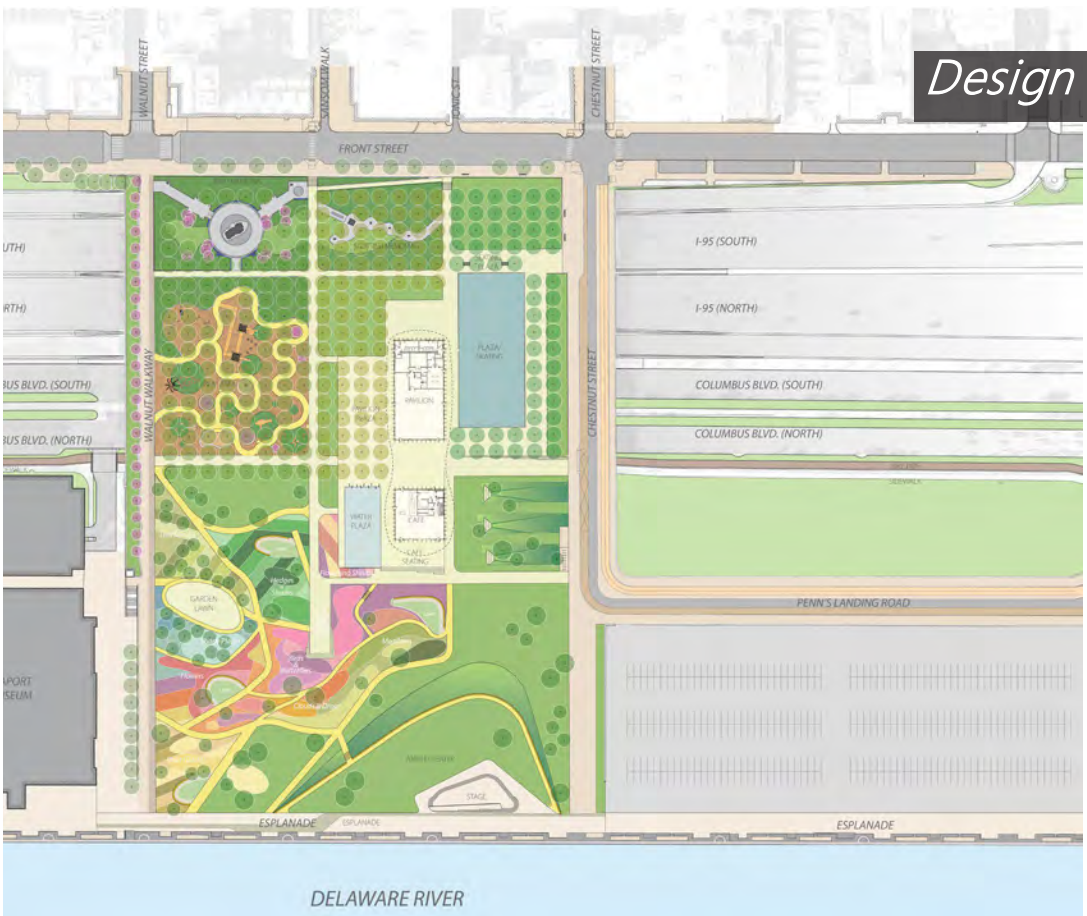
Brandon
Talmadge
Structures Tech

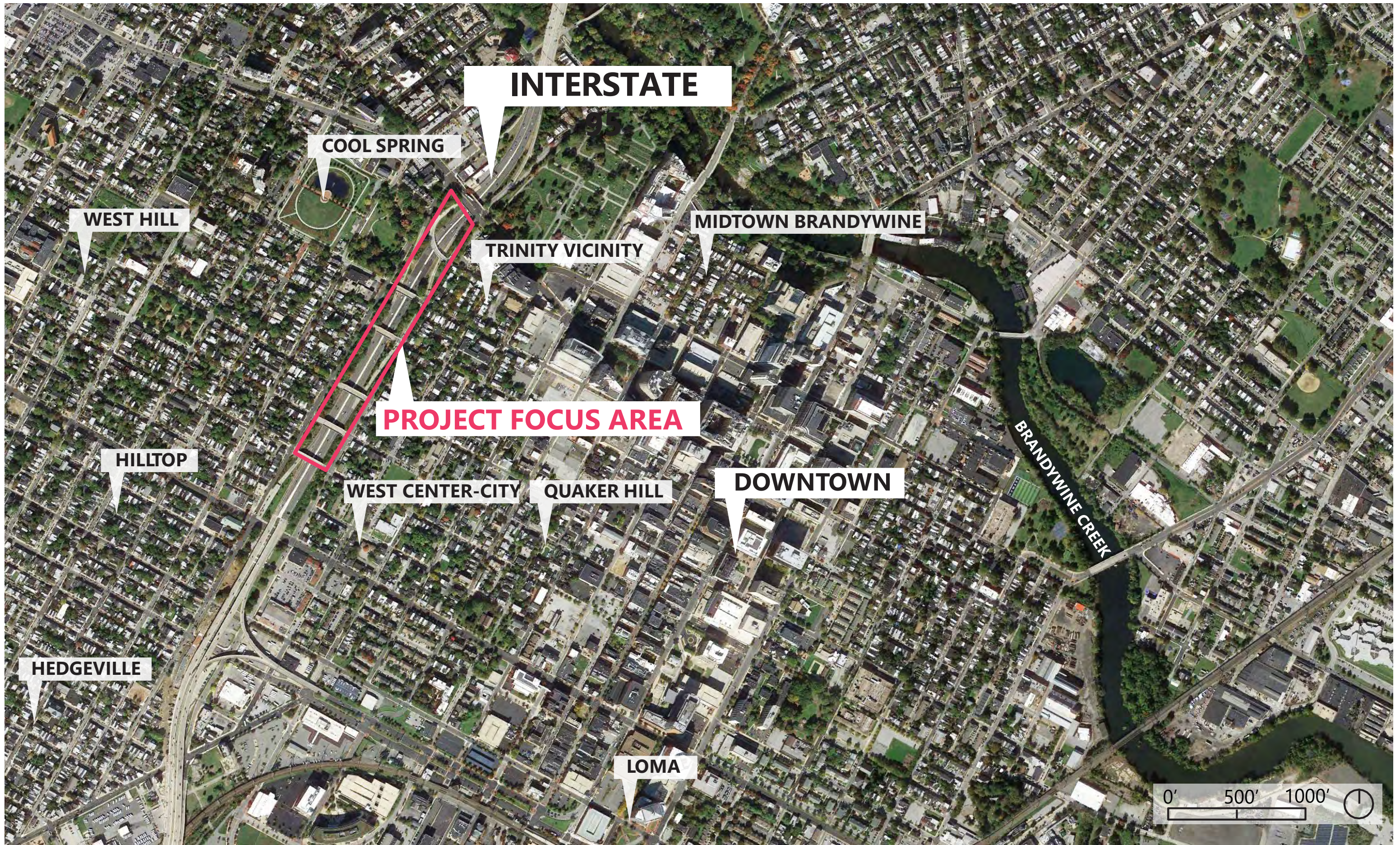


Joanna Arellano
Traffic Analysis



Sean Lain
GIS Specialist





"It really did devastate our community [...] It was people who you grew up with who you no longer saw. You had no idea where they moved to."

-Caren Turner West Center City Resident
(delawarepublic.org)



Companion Source: Delaware Historical Society: *Building I-95: A Community Divided*

0' 100' 200'



1901 Building
Footprints Project
Boundary

1927: Dense Neighborhood Fabric



HAGLEY MUSEUM DIGITAL ARCHIVE

1957: Illustrative Plan



BUILDING I-95: A COMMUNITY DIVIDED / DELAWARE PUBLIC ARCHIVES

1959: Planning I-95



DELDOT DIGITAL ARCHIVES

1954: Residential Neighborhood Fabric
1968: A Divided Neighborhood



FIRSTMAP
DELAWARE



FIRSTMAP
DELAWARE

1997: Density
Changes



GOOGLE
E

Present: An Opportunity to Unite

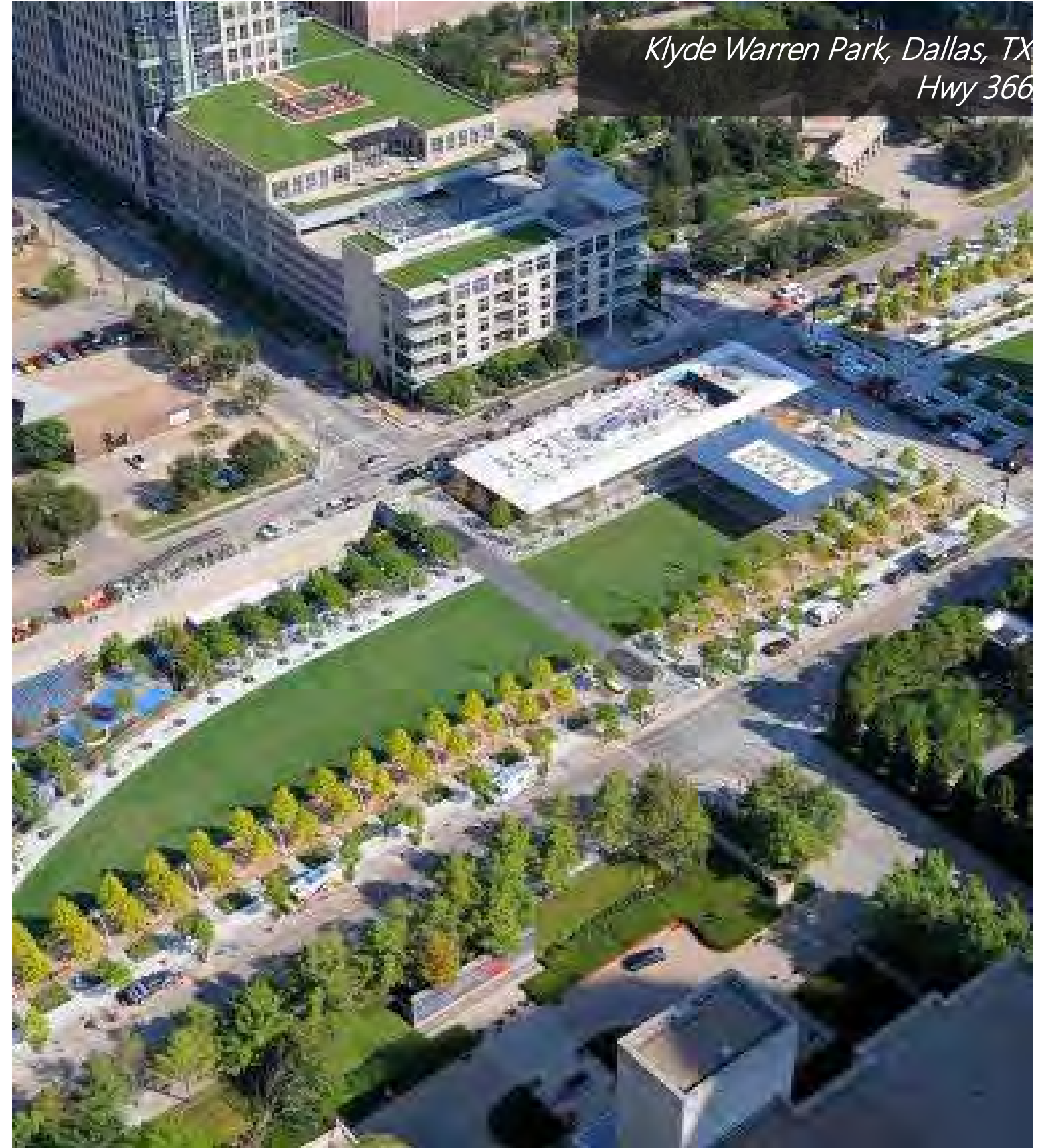
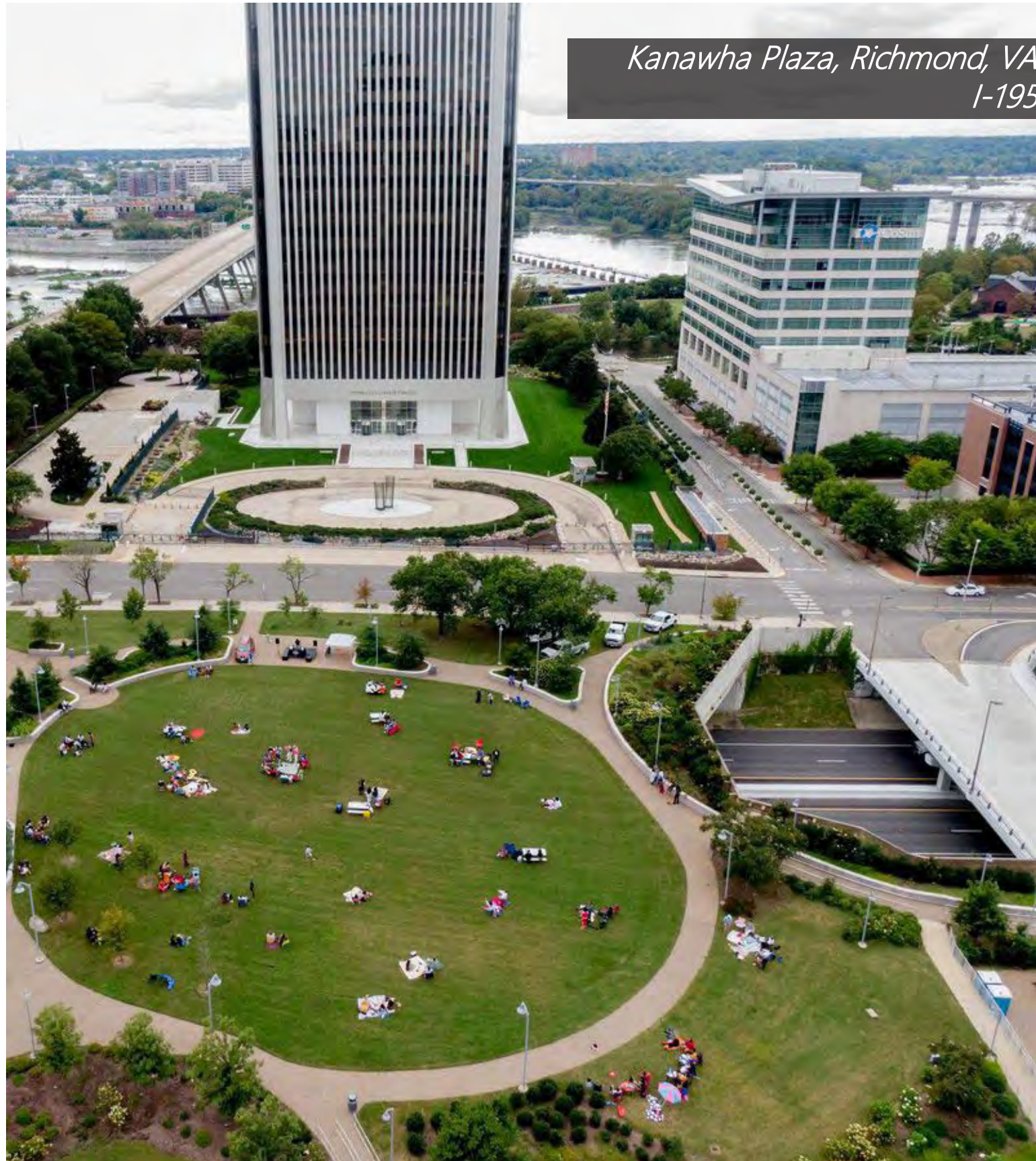


GOOGLE





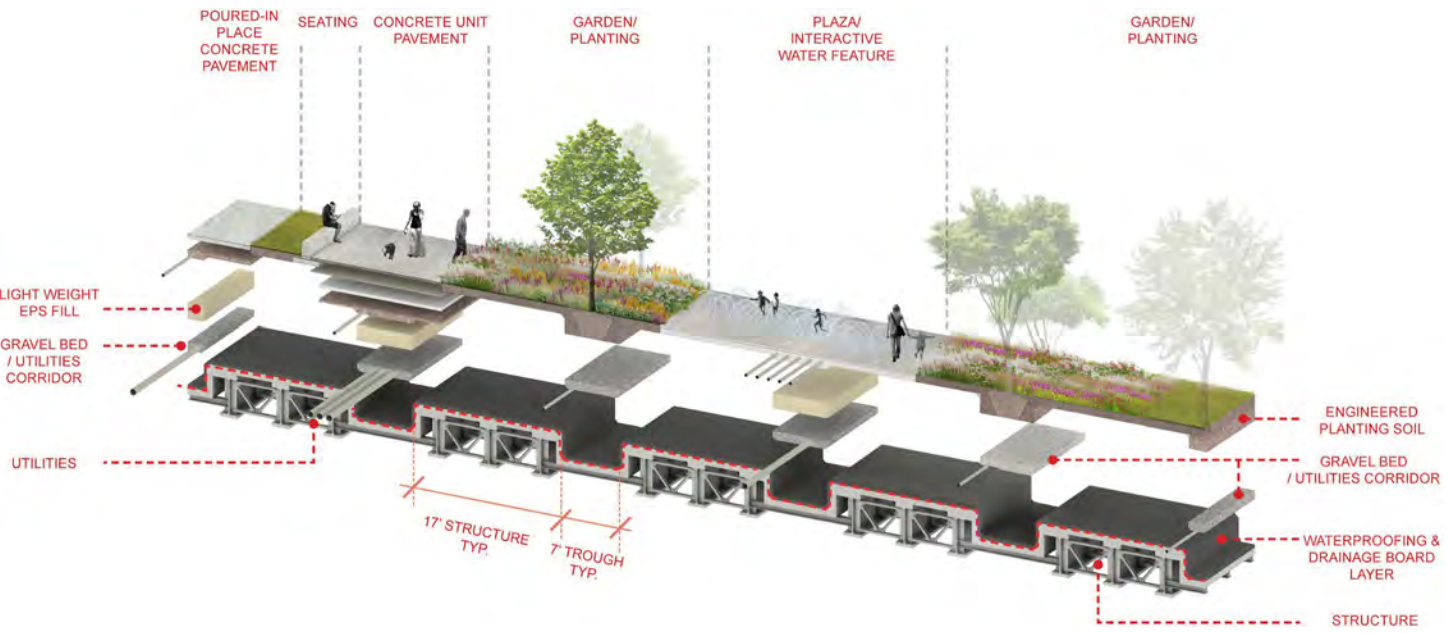
PRECEDENT: PARKS OVER HIGHWAYS



HARGREAVESJONES PRECEDENT: PHILADELPHIA PENN' SLANDING



HARGREAVESJONES PRECEDENT: PHILADELPHIA PENN'S LANDING



An aerial photograph of a city, likely Baltimore, Maryland. The image shows a dense urban area with a mix of residential and commercial buildings. A large baseball field is visible in the upper left quadrant. A multi-lane highway, likely I-95, runs diagonally across the center of the image. The text "I-95 FEASIBILITY STUDY" is overlaid in large, bold, white capital letters, and "Approach & Scope" is overlaid in a smaller, white, italicized font below it.

I-95 FEASIBILITY STUDY

Approach & Scope



WEST SIDE GROWS UNITED
NEIGHBORS



PHOTO BY MONIQUE
HARMON

THIS IS AN OPPORTUNITY

Reconnect the neighborhoods divided by the construction of I-95 by working with the community and key stakeholders to **re-imagine the future of the Jackson-Adams Corridor** between the Delaware Avenue Bridge and the 6th Street Bridge.

THIS IS A COLLABORATION

Build on community efforts by engaging local leaders, community groups, stakeholders, and neighbors. Through workshops, interviews, and collective visioning this plan will represent the **ideas and aspirations** of those who know the needs of the community best.

THIS IS THE BEGINNING.

PROJECT APPROACH: LISTENING, LEARNING, AND COLLABORATING

WE WILL HONOR HISTORY AND PLAN FOR THE FUTURE

Create a vision that is sensitive to the character, context, and story of a community requires honest and open dialogue between the public and the project team.

WE WILL BUILD TRUST FROM CLIENT TO COMMUNITY

- Workshops
- Stakeholder working groups

WE WILL ASK THE RIGHT QUESTIONS

- What does it look like to successfully “connect” communities with a diverse interests?
- How can obstacles of transportation infrastructure transform?
- How should the unique, local historical and cultural identity of place be celebrated?
- What is needed to unite broad interests and stakeholder platforms into a singular vision?
- How can sustainability and regional character come together?



PROJECT
APPROACH
HIGHLIGHTS

8 site visits

which will include:

6 advisory committee meetings

and

4 community workshops

that will cover

Visioning Design Options

Option Feasibility

Final Design Celebration



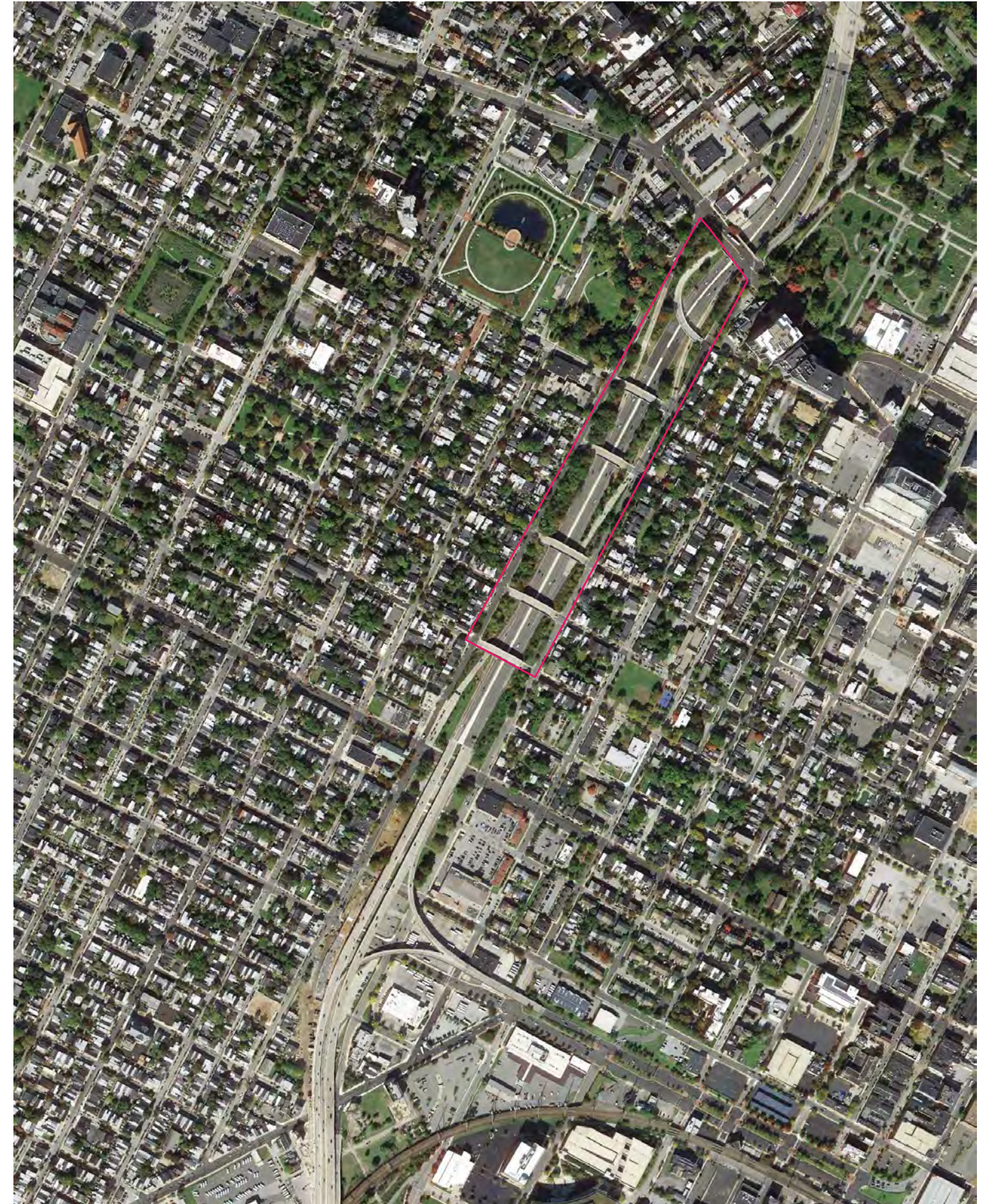
PROJECT KEY POINTS

I-95 WILL NOT BE RE-ROUTED OR CLOSED

I-95 will not be re-routed, permanently closed, or significantly reconfigured to accommodate the Cap proposal.

NO RESIDENTS WILL BE DISPLACED, MOVED, OR OTHERWISE IMPACTED BY THIS PROJECT

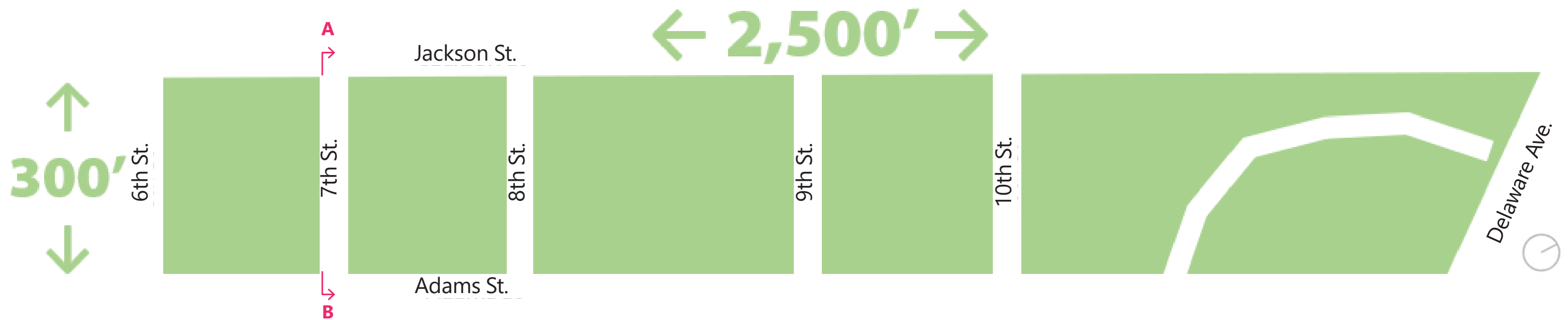
The project boundary is between Jackson and Adams Street and the 6th Street bridge to Delaware Avenue. Improvements to streets adjacent to the project site may be recommended as a part of the study.



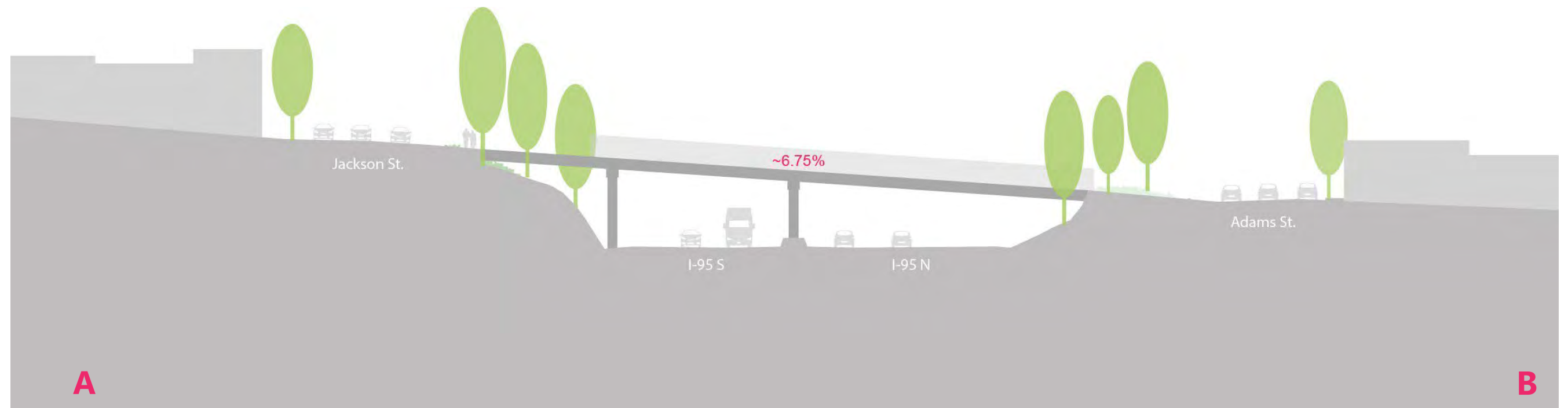
An aerial photograph of a city, likely Baltimore, Maryland. The image shows a dense urban area with a mix of residential and commercial buildings. A prominent feature is a large, rectangular baseball field with a green field and brown infield, located in the upper left quadrant. To the right of the field, a multi-lane highway (I-95) runs diagonally across the frame. The highway is flanked by trees and some commercial buildings. The overall scene is a mix of urban development and green space.

I-95 FEASIBILITY STUDY

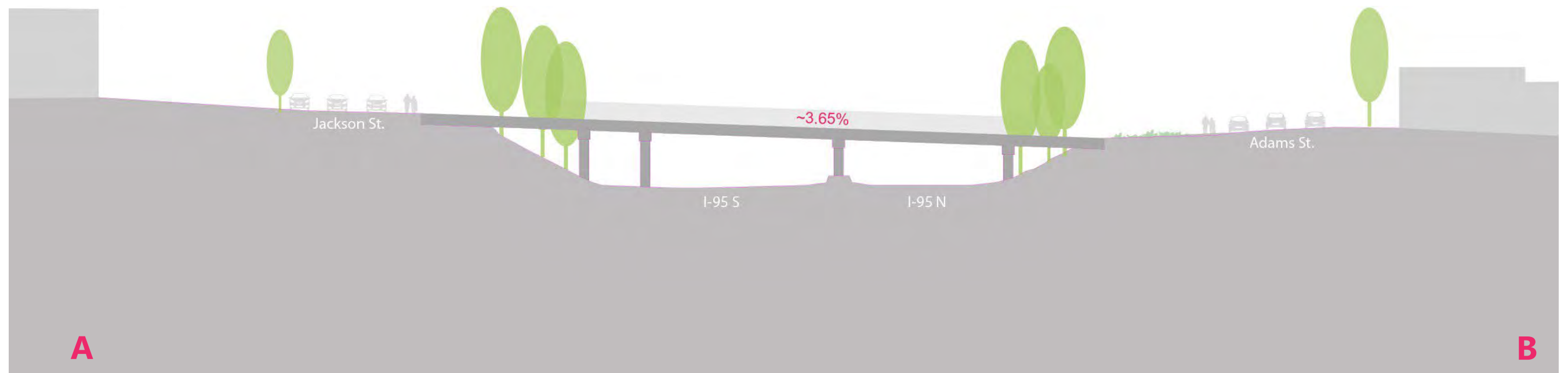
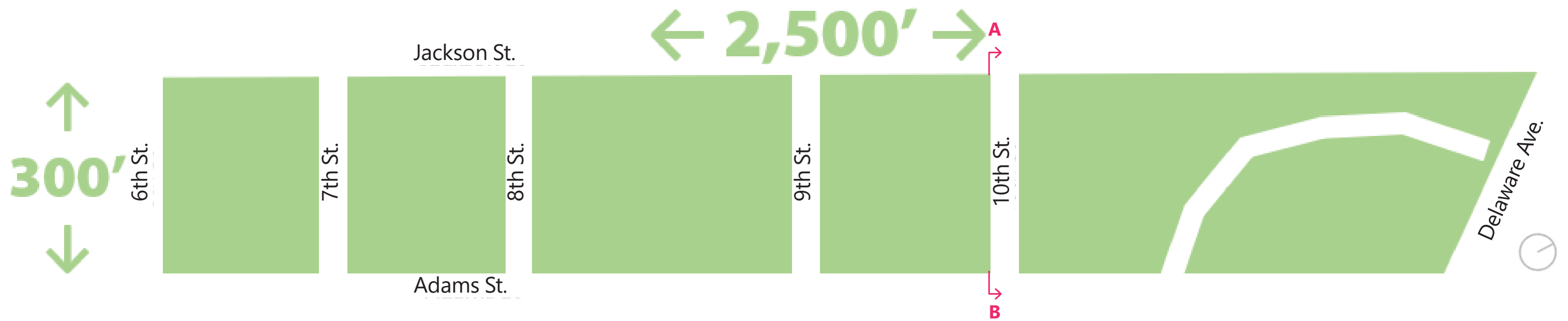
Preliminary Analysis Mapping



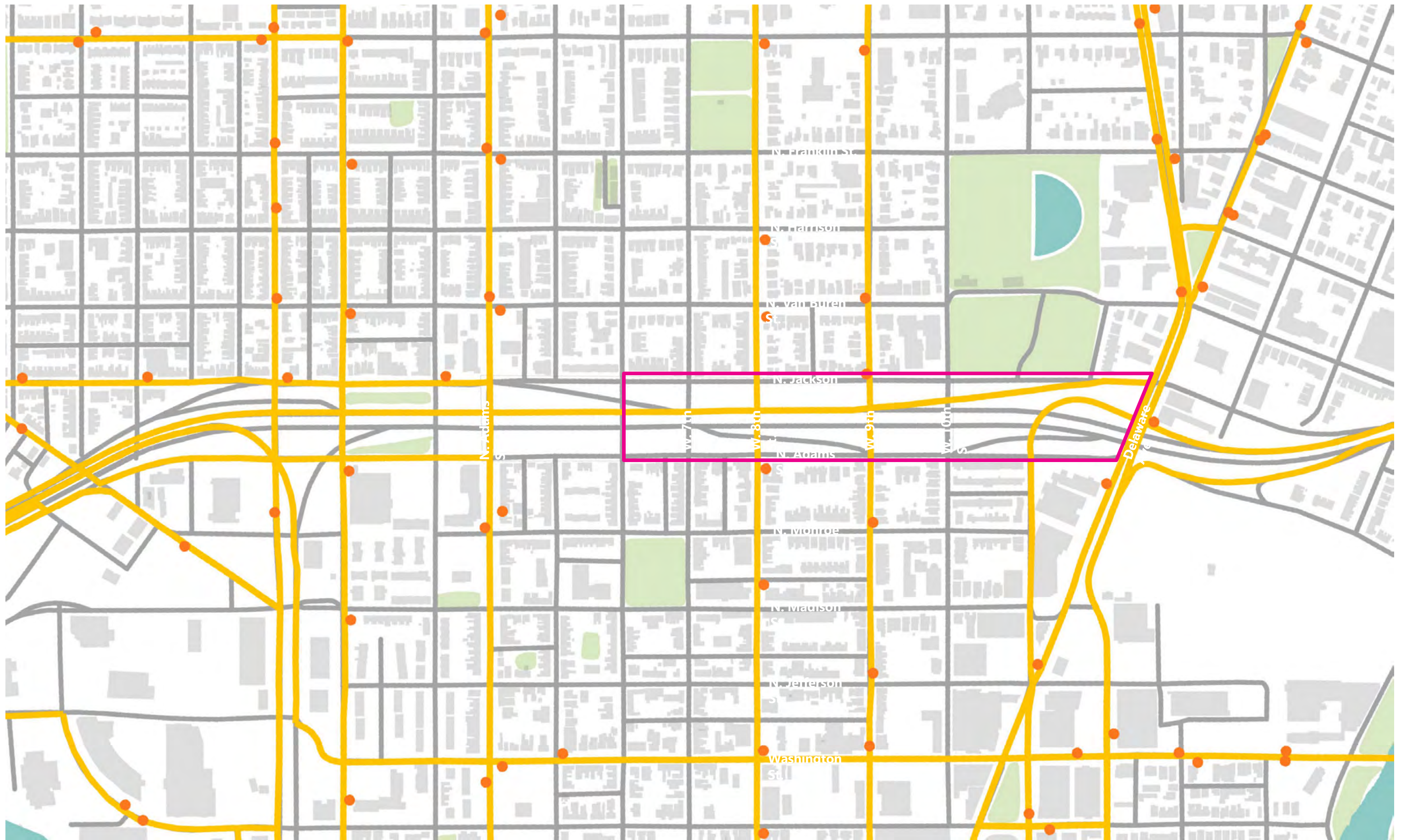
6 blocks; total study area is 12 acres



Project Site Dimensions



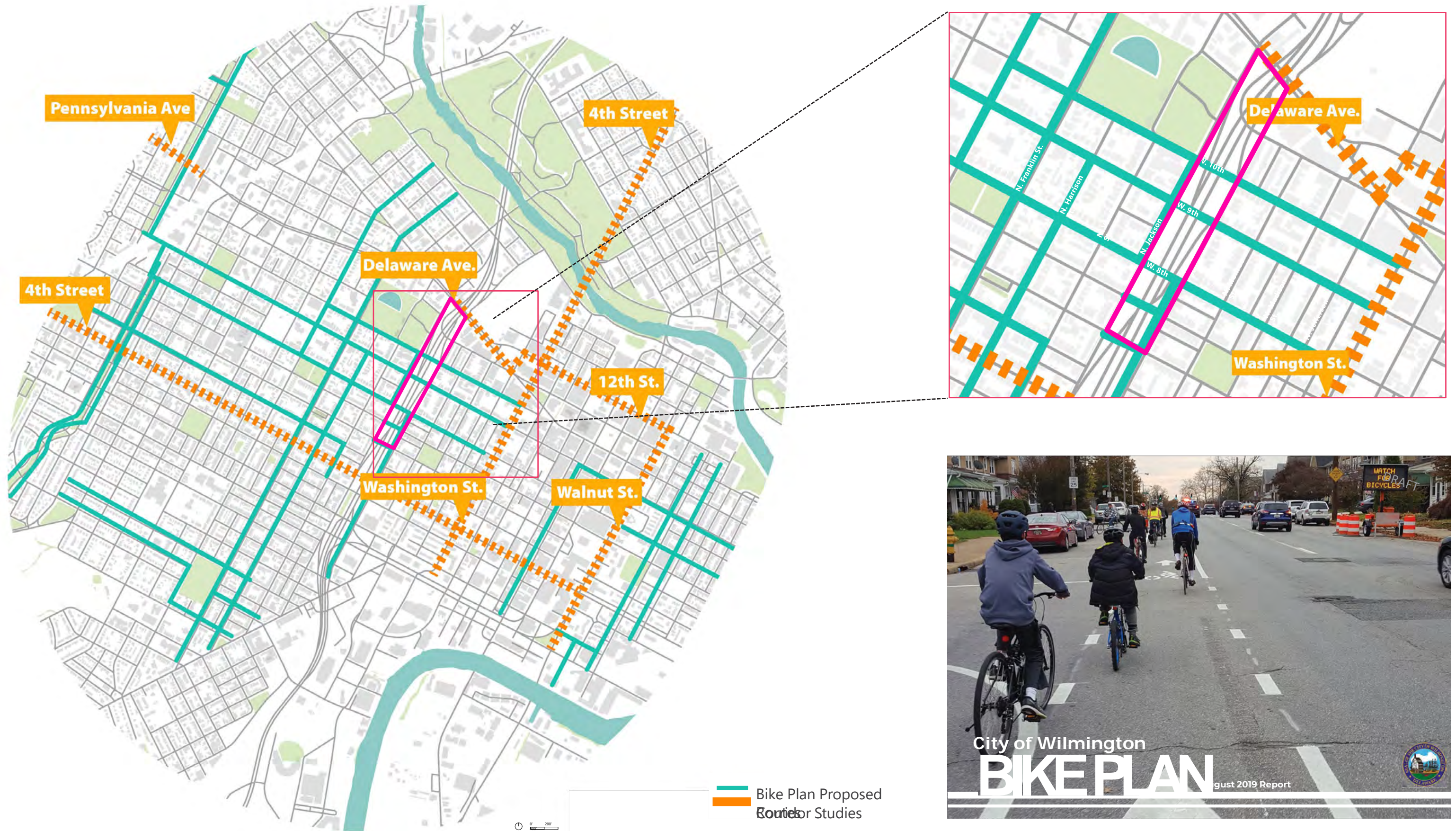
Project Site Dimensions



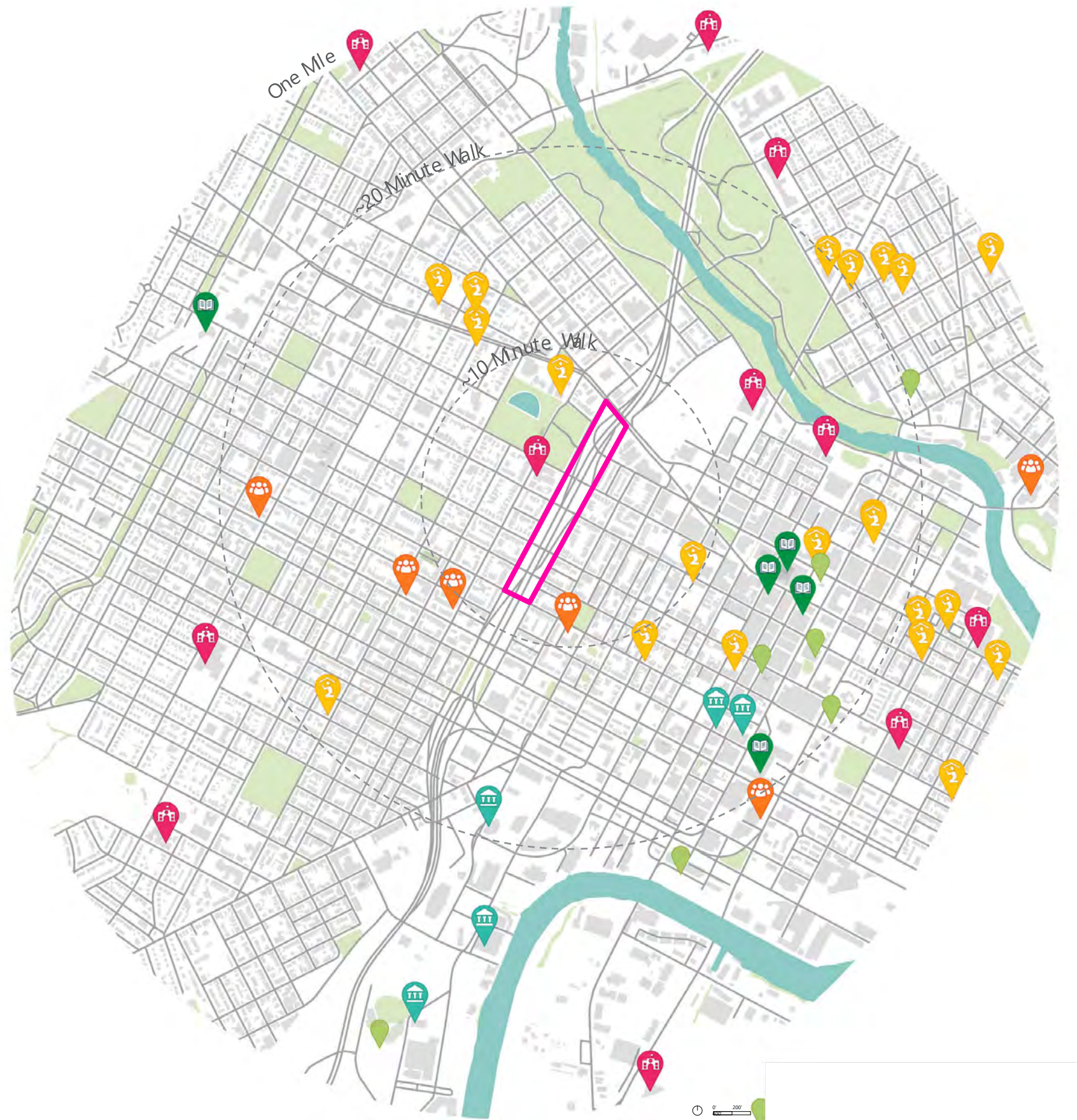
Bus Routes + Stops

● BUS STOP
 — BUS ROUTE





City Of Wilmington Bike Plan



Within One Mile Of The Project Site:



5 Museums



5 Libraries



11 Schools



20+ Places Of Worship



4+ Community Centers



7+ Landmarks



~10 Parks

Landmarks + Institutions

An aerial photograph of a city, likely Baltimore, Maryland. The image shows a dense urban area with a mix of residential and commercial buildings. A prominent feature is a large, rectangular baseball field with a green field and brown infield, located in the upper left quadrant. To the right of the field, a multi-lane highway (I-95) runs diagonally across the frame. The surrounding area is filled with trees and various types of buildings, including some taller structures. The overall scene is a high-angle, wide-area view of the city.

I-95 FEASIBILITY STUDY

Advisory Committee #1 Recap

What would make this project successful?

Write one word or phrase that describes your optimism

Trip generator

***Life and energy
quality***

Bring together different communities

A project appreciated by locals ***Connections of***

Include those experiencing ***people and places***
homelessness

Universally accessible

A place for teens

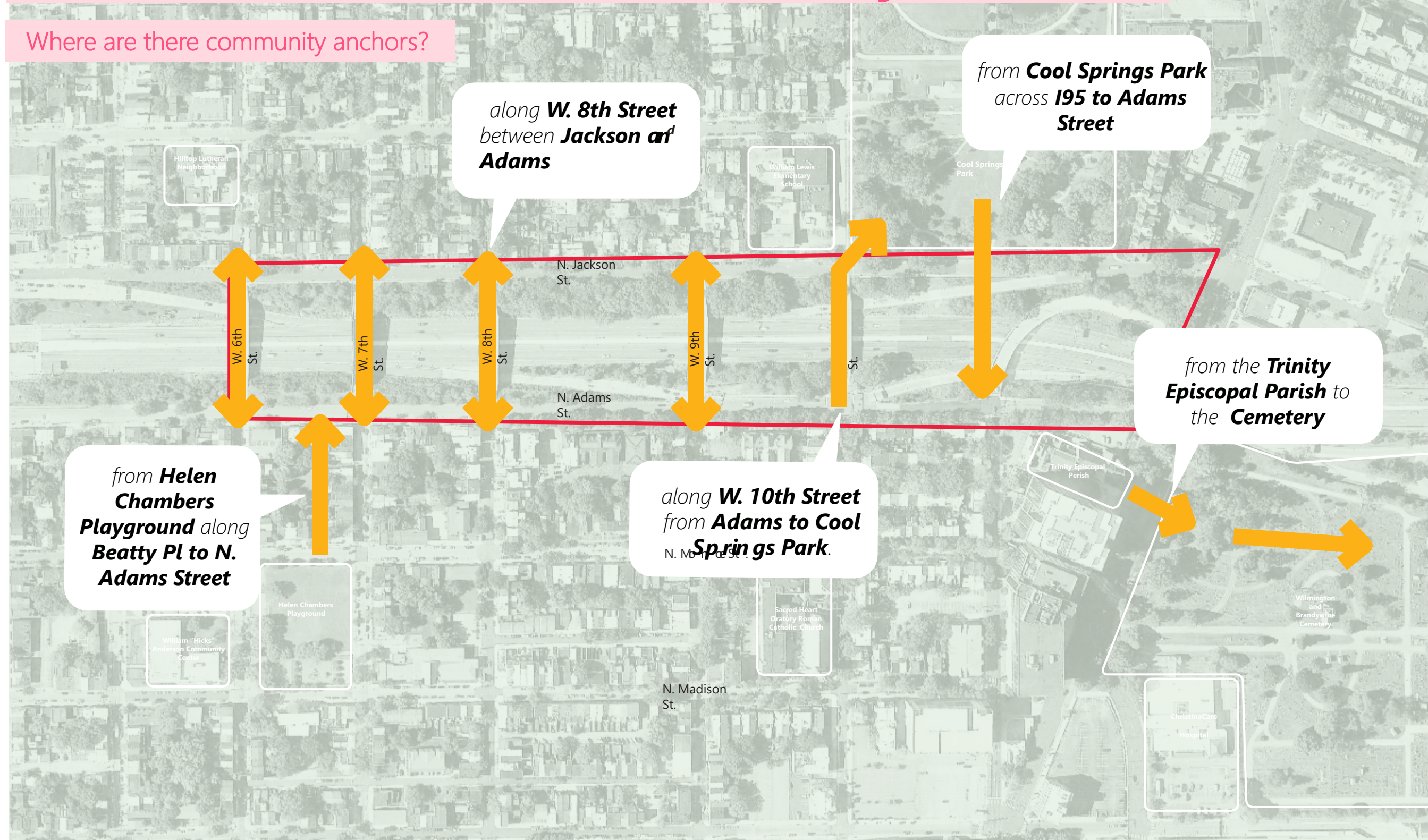
Community restorations

Amenities for the ***Improve air
neighborhoods***

Advisory Committee Meeting #1 Activity (September 30th & November 2nd)

What Connections Should this Project Make?

Where are there community anchors?





DISCUSSION + QUESTIONS

What should this project be called?

- *Bridging I-95: Connecting the Community*
- *Wilmington, DE I-95 Cap Feasibility Study*
- *Something Else?*

What are the *OPPORTUNITIES* here?
What are the *CHALLENGES*?

Questions?



Health + wellness: this community needs...?

Place GREEN stickers for those you agree with, and RED for those you do not

agree with Fitness class space loops



Place stickers here

Exercise stations



Place stickers here

Running



Place stickers here

Bike skills



Place stickers here

Complative

Place a **RED** sticker if you feel this idea is not suitable for this neighborhood

Place stickers here



Pla sur



Place stickers here

Place a **GREEN** sticker if you feel this idea is suitable for this neighborhood

boarding



Place stickers here

Flexible lawn



Place stickers here

Dog



Place stickers here

Sport courts



Place stickers here

Other

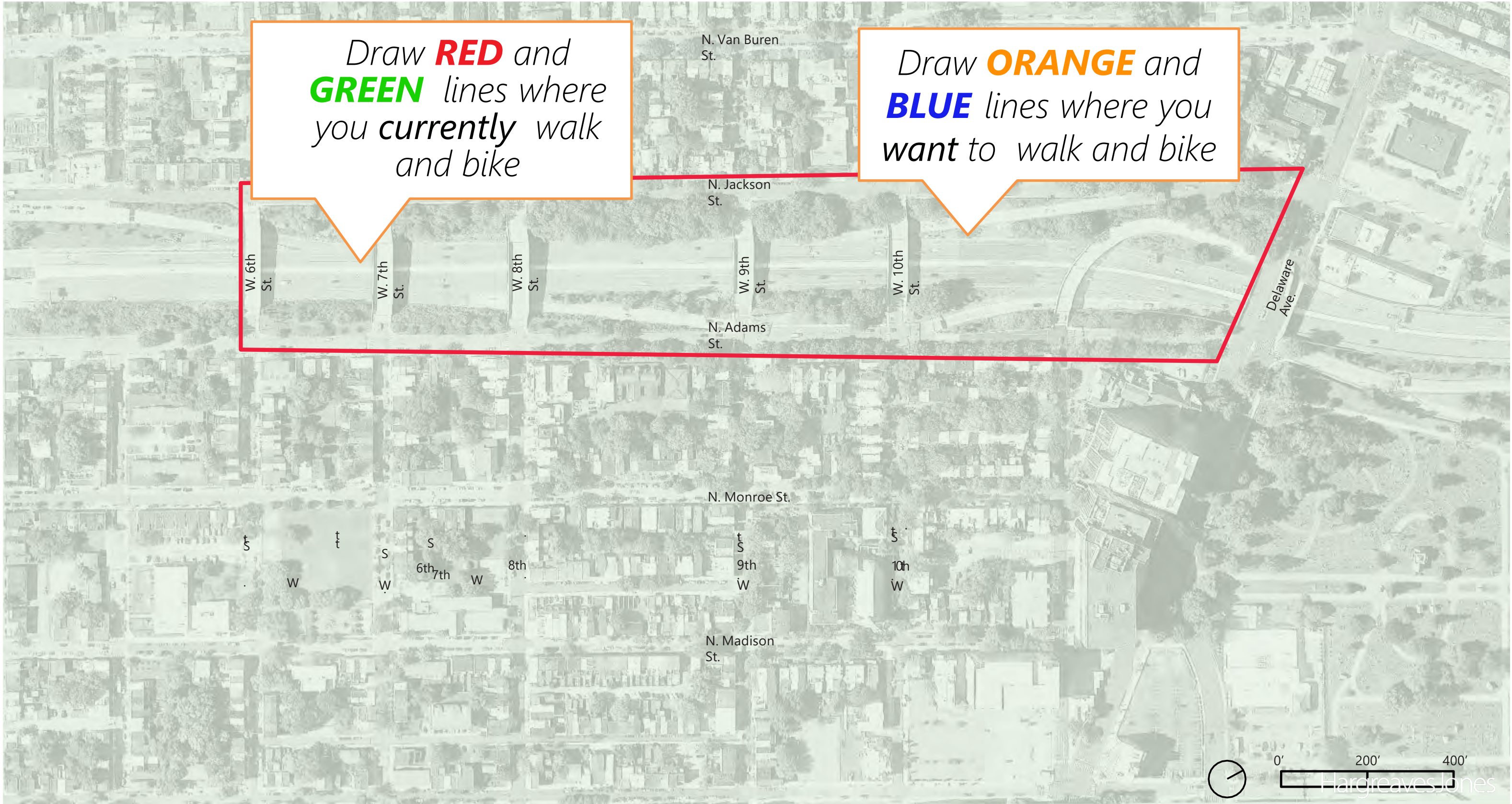
:

Have an idea that isn't shown? **WRITE** it in here!

Place stickers here

Where do you walk or bike? Where **would you walk or bike**, if you could?

I CURRENTLY WALK HERE I WANT TO WALK HERE I CURRENTLY BIKE HERE I WANT TO BIKE HERE



Let's make a vision for the future of I-95

When I picture the future of this place, I envision...

A colorful community park

Gardens for bees

A place for everyone

NEXT STEPS

- Compile community feedback from meetings, workshops and surveys
- Draft initial concepts
- Present initial concepts to the Advisory Committee
- Present concepts at Community Workshop #2 (Stay tuned for dates!)



TASK 1

COMMUNITY VISIONING

TASK 2

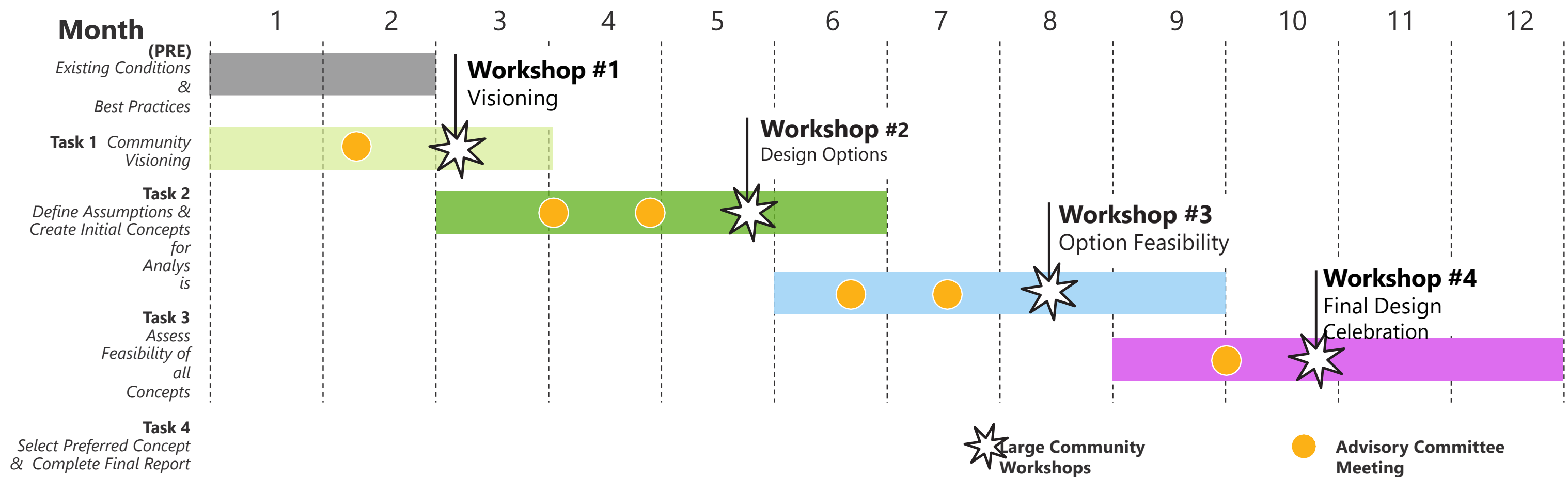
DEFINE ASSUMPTIONS AND
CREATE INITIAL CONCEPTS FOR
ANALYSIS

TASK 3

ASSESS FEASIBILITY OF ALL CONCEPTS

TASK 4

SELECT PREFERRED CONCEPT & COMPLETE FINAL
REPORT



Please take our quick survey on the project website:

<http://www.wilmapco.org/i95cap/>

Questions or Comments? Please contact Dave Gula dgula@wilmapco.org

