

An aerial photograph of a city, likely Wilmington, Delaware, showing a dense urban grid, a river (the Delaware River) winding through the lower portion, and a major highway (I-95) running vertically. A dark purple rectangular overlay is positioned on the right side of the image, containing white text.

BRIDGING I-95: CONNECTING THE COMMUNITY

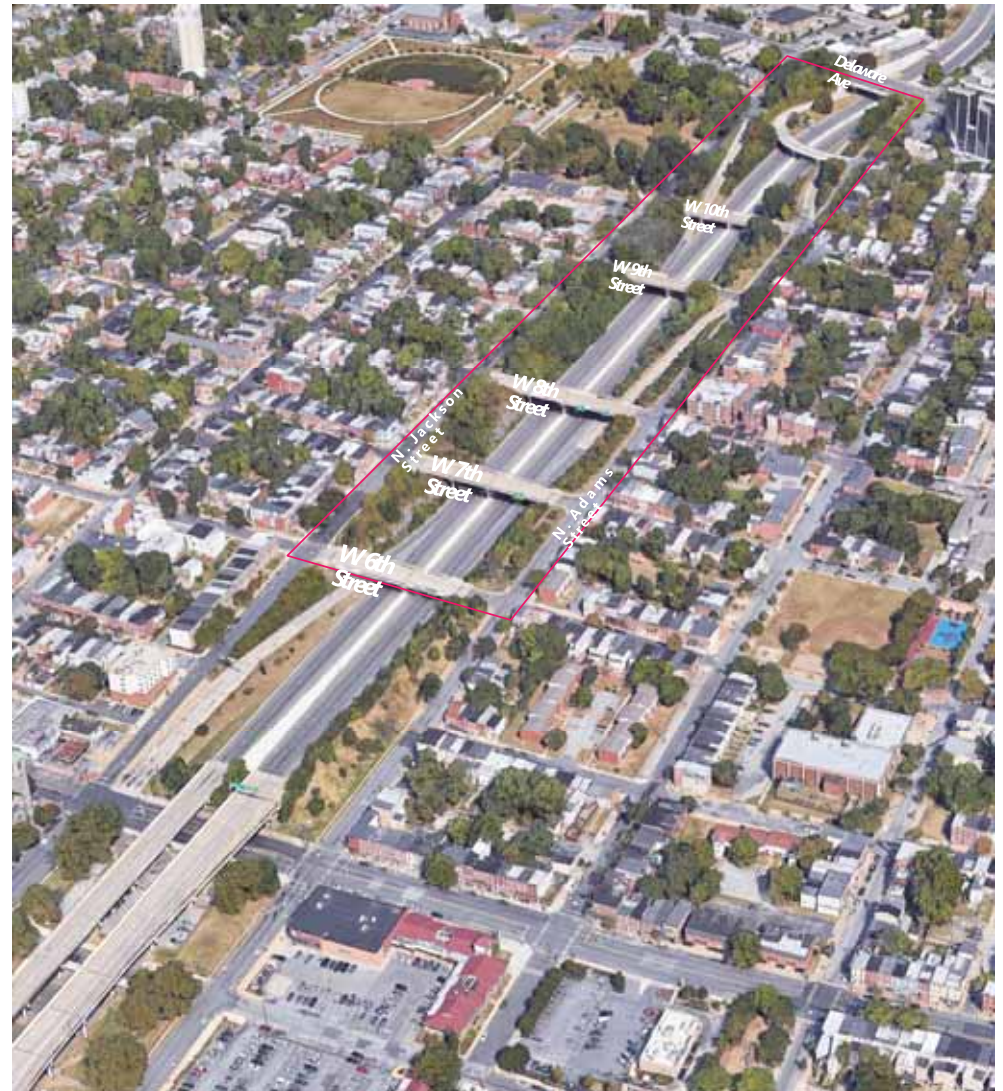
I-95 CAP FEASIBILITY STUDY
WILMAPCO PAC MEETING
June 13, 2022

ADVISORY COMMITTEE

- U.S. Senator Thomas Carper
- U.S. Senator Chris Coons
- U.S. Representative Lisa Blunt Rochester
- FHWA
- State Senators: Sarah McBride, Elizabeth Lockman, Darius Brown
- State Representatives: Gerald Brady, Nnamdi Chukwuocha, Sherry Dorsey Walker
- Delaware Transit Corporation (DTC)
- New Castle County
- City Council members: Michelle Harlee 4th, Bregetta Fields 5th, Nathan Field 8th
- Neighborhood Planning Council: 4th, 5th, 8th
- Downtown Visions
- United Neighbors
- Westside Grows Together
- Latin American Community Center
- BlindSight Delaware
- Bike Delaware
- West Center City Neighborhood Associations
- Westside Neighborhood Coalition
- Cool Spring/Tilton Park Neighborhood Coalition
- Trinity Vicinity Neighborhood Association
- Trinity Episcopal Church
- Hilltop Lutheran Church

PROJECT TEAM

WILMAPCO DeIDOT/DTC
City of Wilmington Administration



PROJECT TEAM ORGANIZATION

CONSULTANT TEAM

Hargreaves Jones

PRIME / LANDSCAPE
ARCHITECTURE



Mary Margaret Jones
Design Lead



Kirt Rieder
*Project Manager /
Principal-in-
Charge*



Aubrey Tyler
*Job Captain /
Designer*

MEETING FACILITATOR



Toyin Ogunfolaju
Jacobs
Engineering

JOHNSON, MIRMIRAN
& THOMPSON (JMT)

ENGINEERING & MOBILITY
WILMINGTON, DE



David DuPlessis
Principal-in-Charge



Angie Hernandez
Project Manager



Corey Hull
*Structures Engineering
Lead*



Greg Potens
Structures Engineer



Brandon Talmadge
Structures Tech



Joanna Arellano
Traffic Analysis



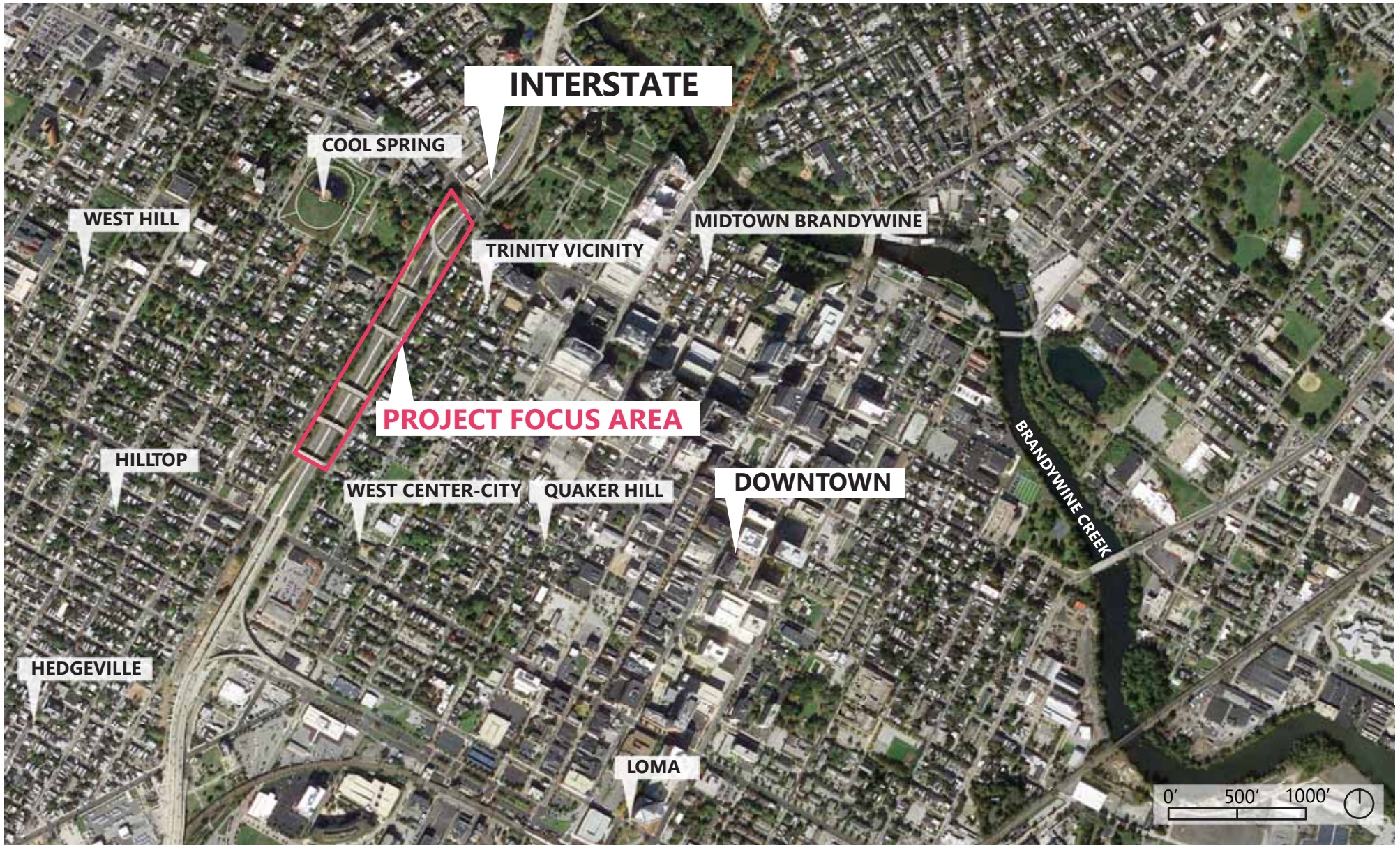
Sean Lain
GIS Specialist



An aerial photograph of a city, likely Los Angeles, with a green outline highlighting a specific area in the center. The image is overlaid with a semi-transparent purple filter. A black rectangular box is centered over the highlighted area, containing the title text.

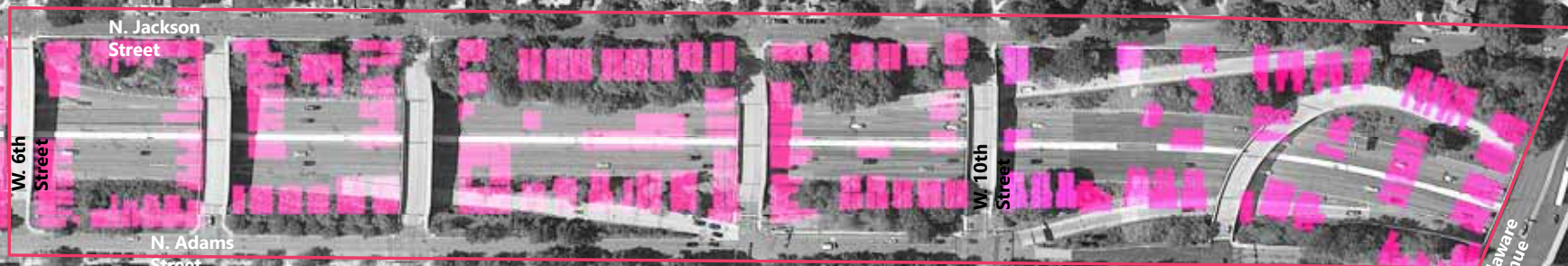
I-95 FEASIBILITY STUDY

Approach



"It really did devastate our community [...] It was people who you grew up with who you no longer saw. You had no idea where they moved to."

-Caren Turner West Center City Resident
(delawarepublic.org)



Companion Source: Delaware Historical Society: *Building I-95: A Community Divided*

0' 100' 200'



■ 1901 Building
— Footprints Project Boundary

1927: Dense Neighborhood Fabric



HAGLEY MUSEUM DIGITAL ARCHIVE

1957: Illustrative Plan



BUILDING I-95: A COMMUNITY DIVIDED / DELAWARE PUBLIC ARCHIVES

1959: Planning I-95



DELDOT DIGITAL ARCHIVES



Advisory Committee Meeting #1 Activity (September 30th & November 2nd 2021)

What would make this project successful?

Write one word or phrase that describes your optimism

Trip generator

Community restorations

*Life and energy
quality*

Amenities for the neighborhoods *Improve air*

Bring together different communities

A project appreciated by locals *Connections of*

Include those experiencing homelessness *people and places*

Universally accessible

A place for teens

Community Workshops #1 and #1B (November 17th 2021 & January 12th 2022)

Let's make a vision for the future of I-95

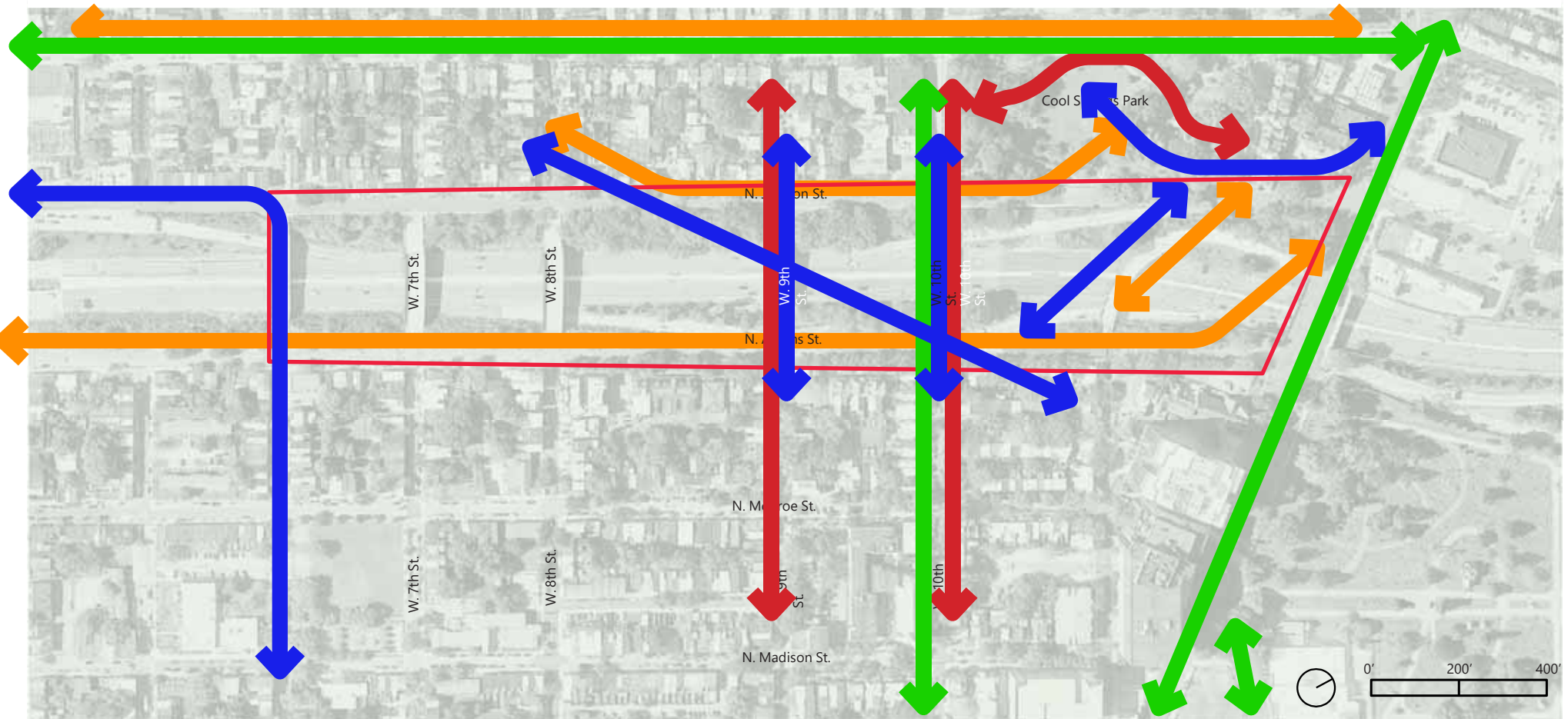
When I picture the future of this place, I envision...

*When picturing the future of this place, the community envisions **a place for everyone** that is **safe, walkable, and colorful**. This includes **well-lit, well-maintained programmed areas** that prioritize **sustainability, native plantings**, places for families and community members to **play** and **exercise** comfortably, and that **celebrates the history of the neighborhoods**.*



Where do you walk or bike? Where **would you walk or bike**, if you could?

 I WANT TO BIKE HERE



Health + wellness: this community needs...?

Place **GREEN** stickers for those you agree with, and **RED** for those you do not agree with

Fitness class space loops



Place stickers here

Exercise stations



Place stickers here

Running



Place stickers here

Bike skills



Place stickers here

Complative

Place a **RED** sticker if you feel this idea is not suitable for this neighborhood

Place stickers here



Play sur



Place stickers here

Place a **GREEN** sticker if you feel this idea is suitable for this neighborhood

Skateboarding



Place stickers here

Flexible lawn



Place stickers here

Dog



Place stickers here

Sport courts



Place stickers here

Other

:

Have an idea that isn't shown? **WRITE** it in here!

Place stickers here

Advisory Committee Meeting #1 & Community Workshops Program Preference Activity

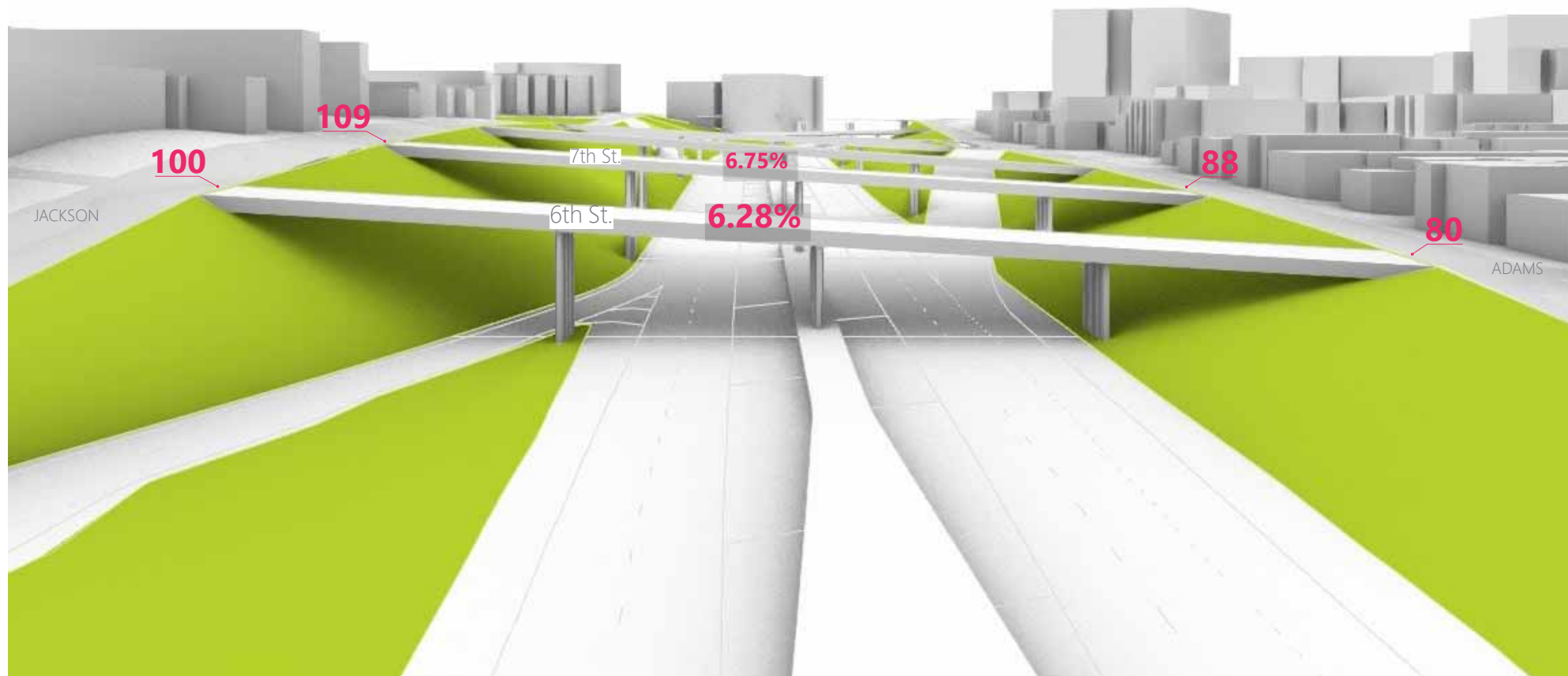


An aerial photograph of a city, likely Los Angeles, with a green outline highlighting a specific area in the center. The image is overlaid with a semi-transparent purple filter. The text is centered within a black rectangular box.

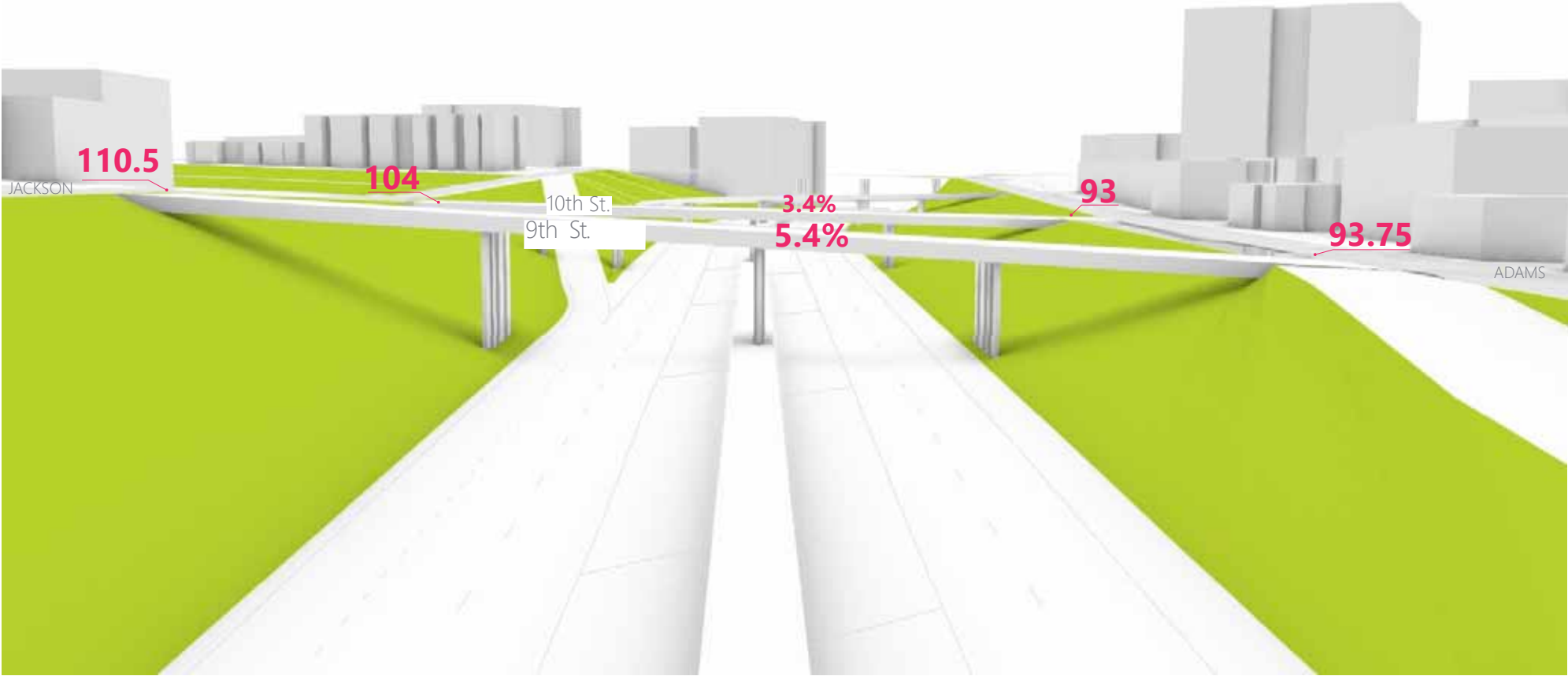
I-95 FEASIBILITY STUDY

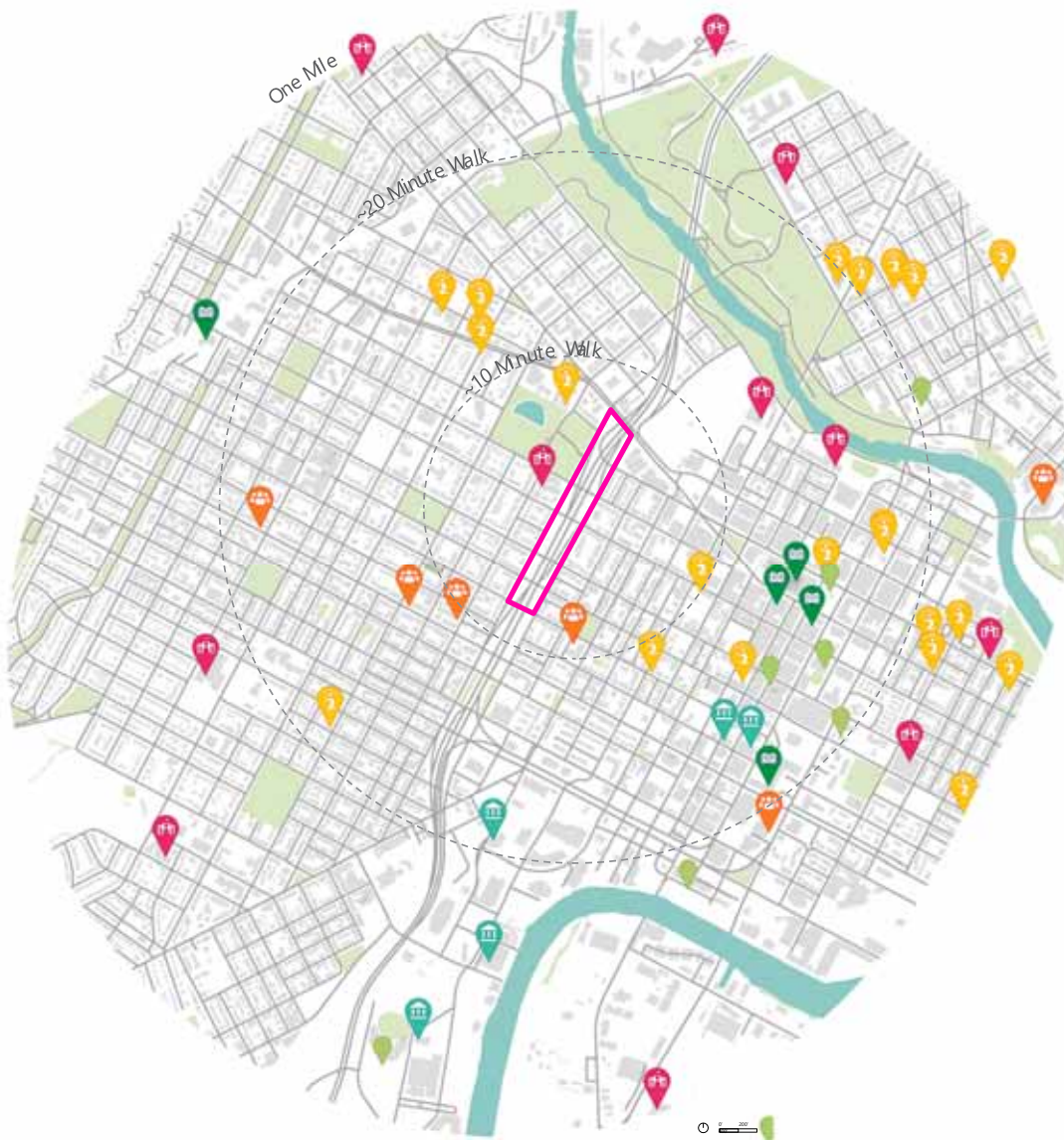
Design Considerations

SITE TOPOGRAPHY



SITE
TOPOGRAPHY





Within One Mile Of The Project Site:



5 Museums



5 Libraries



11 Schools



20+ Places Of Worship



4+ Community Centers

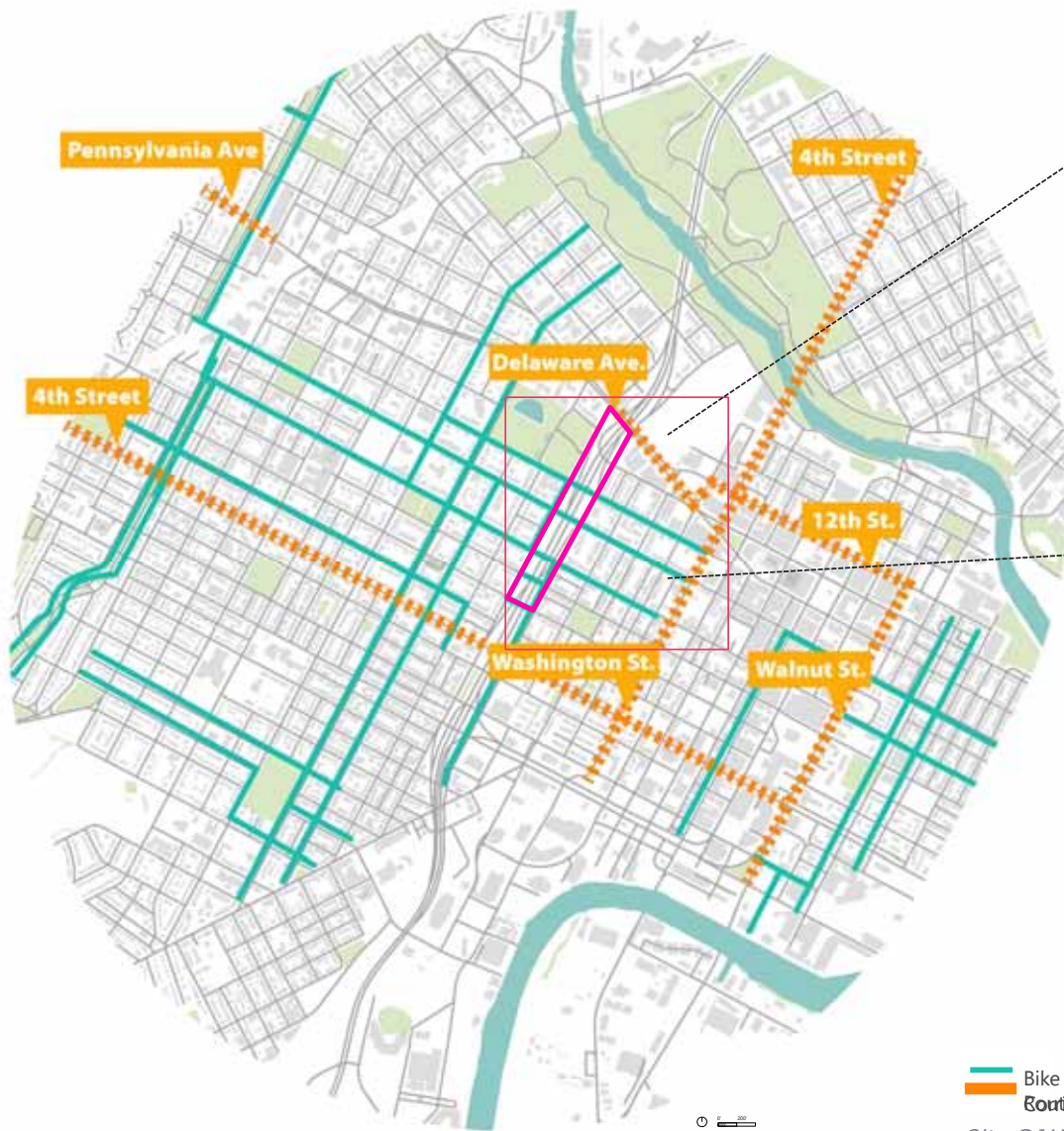


7+ Landmarks



~10 Parks

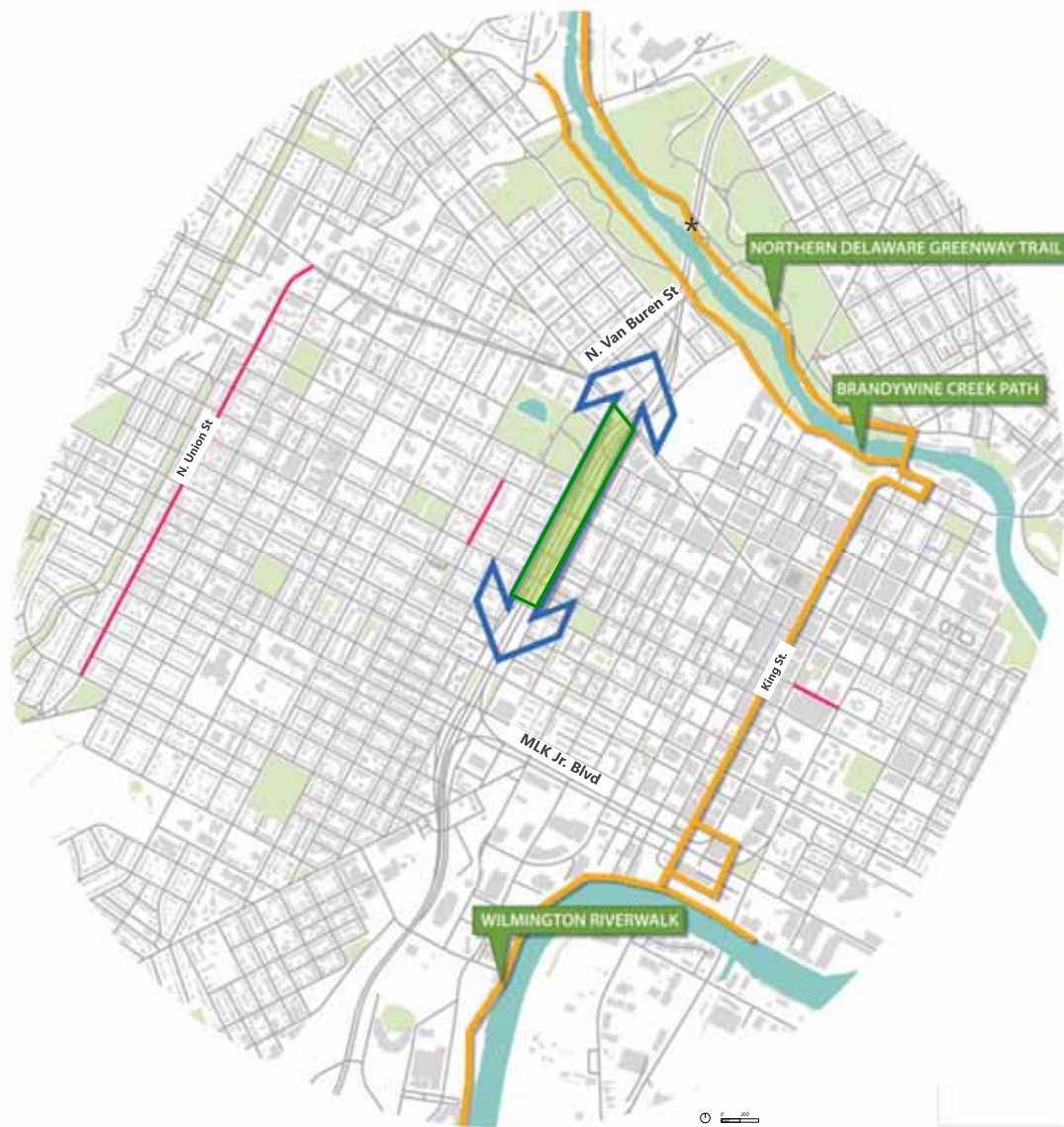
Landmarks + Institutions



 Bike Plan Proposed
 Corridor Studies

City Of Wilmington Bike Plan

City Of Wilmington Bike Plan



Brandywine to River Connections

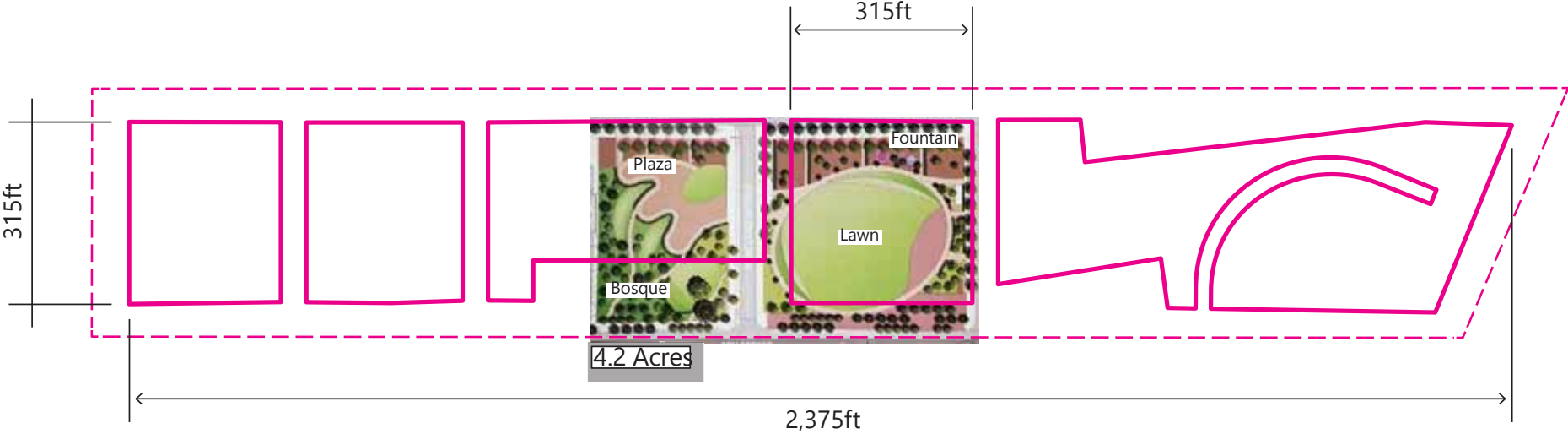


Brandywine Creek
Path

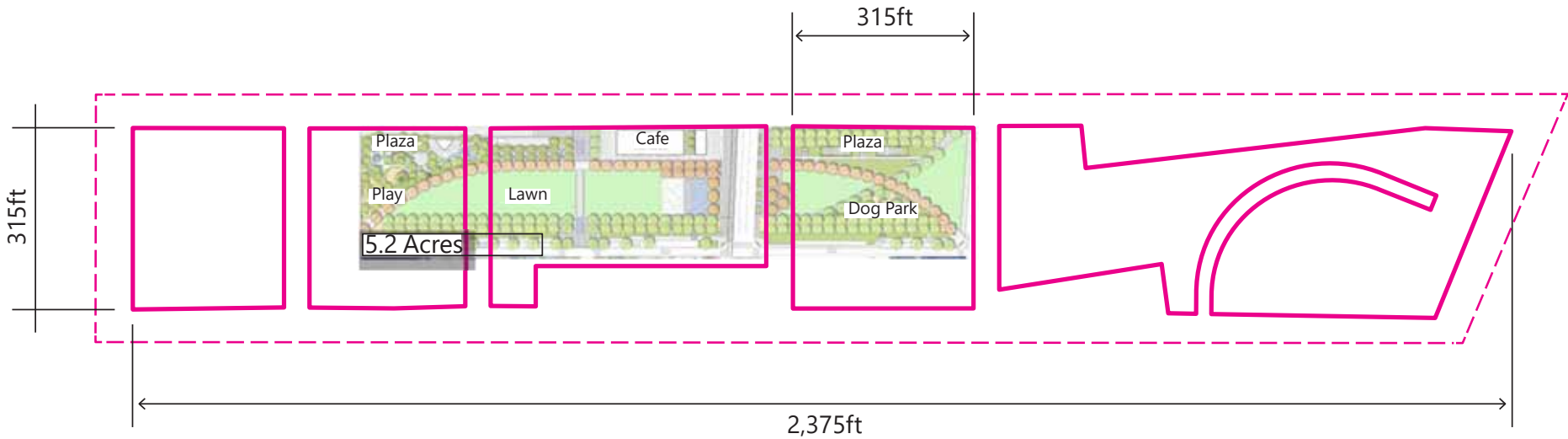
Image:
TrailLink

- Existing Bike Trail Existing
- Bike Lane
- Bike Plan Proposed Routes
- Possible Bike Route Extension

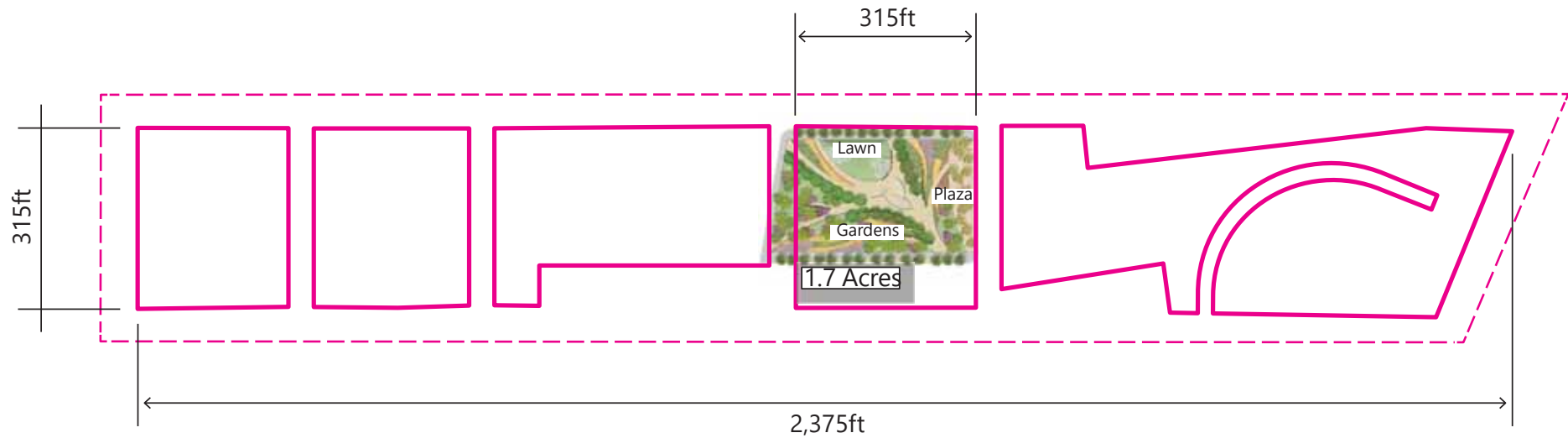
SCALE COMPARISONS | The Commons, Minneapolis, MN



SCALE COMPARISONS | Klyde Warren Park, Dallas, TX



SCALE COMPARISONS | Civic Park, Dallas, TX



SCALE COMPARISONS | Discovery Green, Houston, TX



An aerial photograph of a city, likely Los Angeles, with a purple semi-transparent overlay. A green rectangular outline is drawn on the map, highlighting a specific area in the center. The text "I-95 FEASIBILITY STUDY" is in bold white capital letters, and "Project Goals" is in a white italicized font, both centered within a black rectangular box.

I-95 FEASIBILITY STUDY

Project Goals

PROJECT GOALS

Reconnect the neighborhoods divided by the construction of I-95 within the Jackson-Adams Corridor between the Delaware Avenue Bridge and the 6th Street Bridge.

Support neighborhood character, cohesion, and pride.

Provide equitable, safe, and connected access for pedestrians and people riding bicycles and using all modes of transportation.

Create inclusive, welcoming, vibrant public urban outdoor experiences through public realm & landscape amenities for residents of the adjacent neighborhoods.

GIVENS

- No commercial or residential relocations.
- Maintain an acceptable level of traffic flow through the project area balanced with a safe pedestrian oriented environment.
- No significant reconfiguration of I-95.

PROJECT PURPOSE

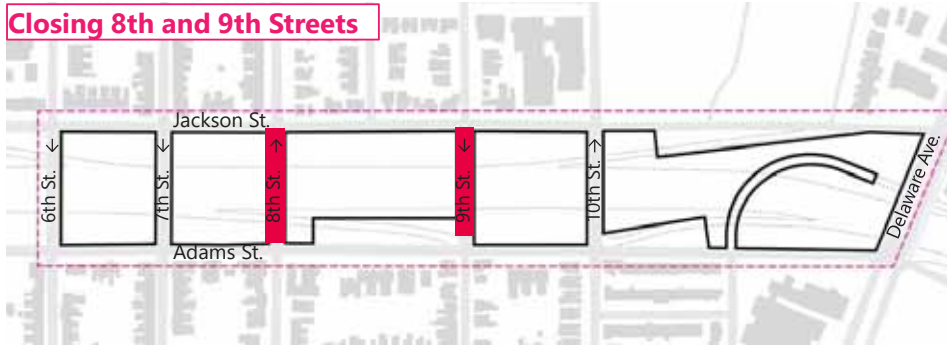
The purpose of this project is to mitigate the severed community connectivity between the neighborhoods adjacent to I-95 through **inclusive, vibrant public realm** and **landscape amenities** that celebrate neighborhood histories and to provide equitable and safe access to these new amenities through a **comfortable, safe, and connected multimodal network**.

PROJECT NEED

This project is needed to **offset the social and physical damage** caused by the initial construction of I-95 during the 1960's which **severed connectivity and cohesion** between communities adjacent to I-95 and created uncomfortable and **unsafe conditions** for people walking, biking, and traveling at night due to **inadequate multimodal access** between neighborhoods.

UNDERSTANDING TRAFFIC CONDITIONS

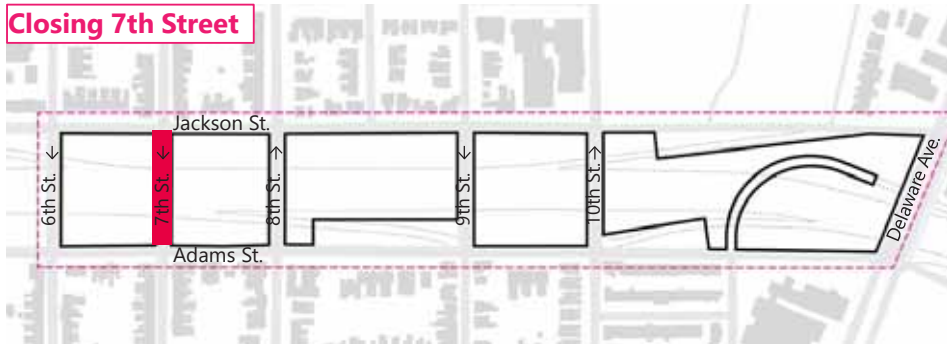
Closing 8th and 9th Streets



Closing 8th and 10th Streets



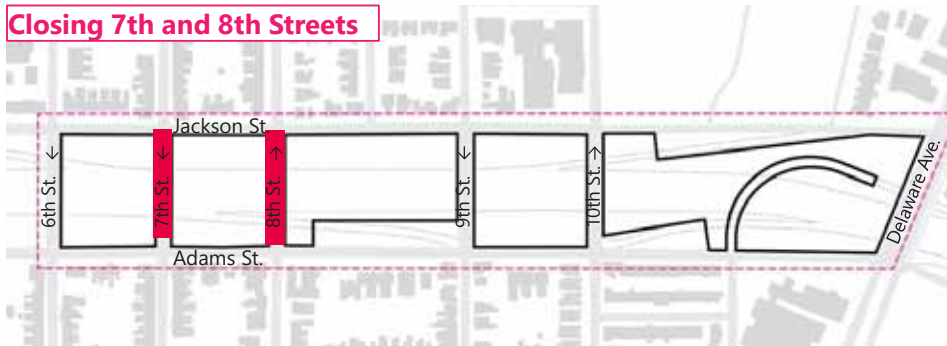
Closing 7th Street



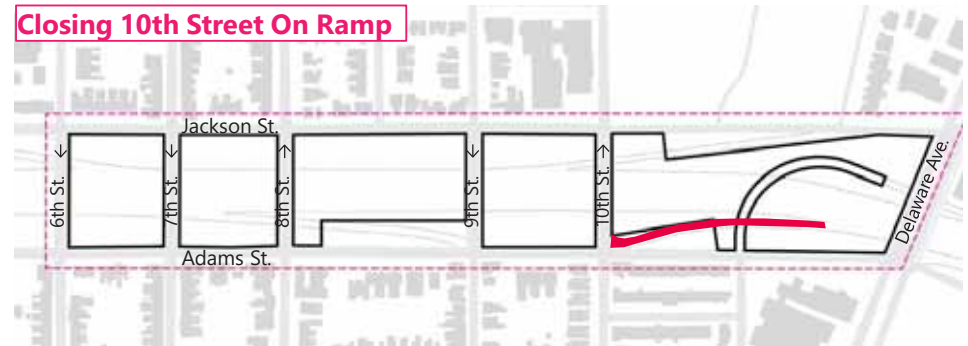
Closing 9th and 10th Streets



Closing 7th and 8th Streets



Closing 10th Street On Ramp

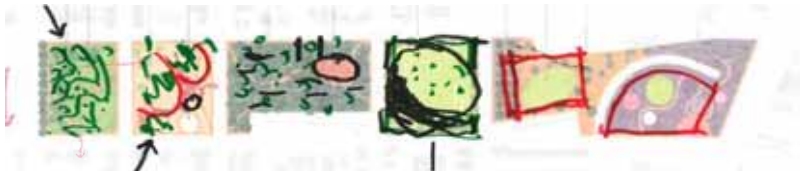


An aerial photograph of a city, likely Los Angeles, with a green outline highlighting a specific area in the center. The image is overlaid with a dark purple semi-transparent rectangle containing white text.

I-95 FEASIBILITY STUDY

Early Approaches

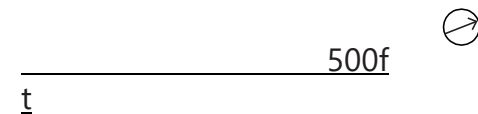
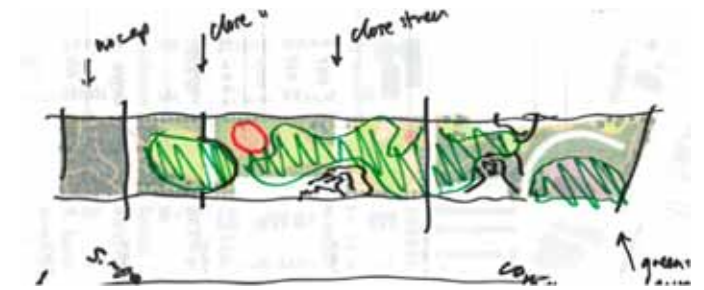
APPROACH 01 | OUTDOOR ROOMS



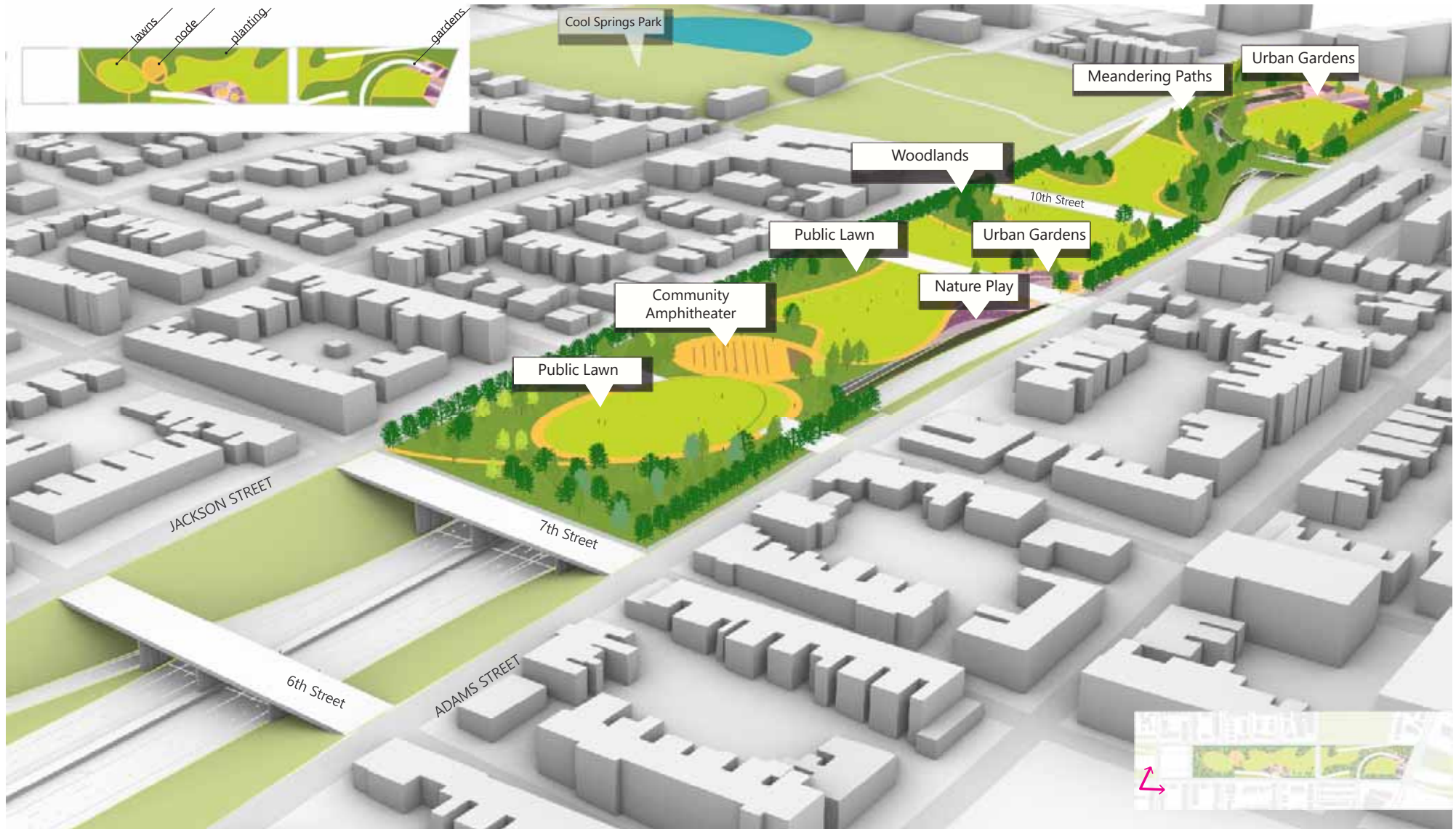
APPROACH 01 | OUTDOOR ROOMS



APPROACH 02 | GREENWAY



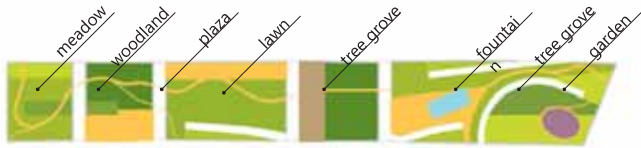
APPROACH 02 | GREENWAY



APPROACH 03 | THE COMMONS



APPROACH 03 | THE COMMONS



Early Approach 1: Outdoor Rooms

a series of distinct places

- All Streets Remain Open
- Includes Development Site
- Closes 10th St. Ramp



Early Approach 2: Greenway

a contiguous public green

- 8th and 9th Close to Cars
- Excludes 6th-7th Street Span



Early Approach 03: The Commons

a cohesive civic space

- All Streets Remain Open
- All Approaches are Phaseable



An aerial photograph of a city, likely San Francisco, with a green outline highlighting a specific area in the center. The image is overlaid with a semi-transparent purple filter. The text is centered within a black rectangular box.

I-95 FEASIBILITY STUDY

Next Steps & Schedule

NEXT STEPS

Community Workshop #2

Refine Early Approaches Targeted Community

Outreach

- How can we better engage with more neighborhoods?
- What model of engagement would be most effective in your neighborhood?
- Where would it be most effective (grocery store, parks, etc)?



TASK 1

COMMUNITY VISIONING

TASK 2

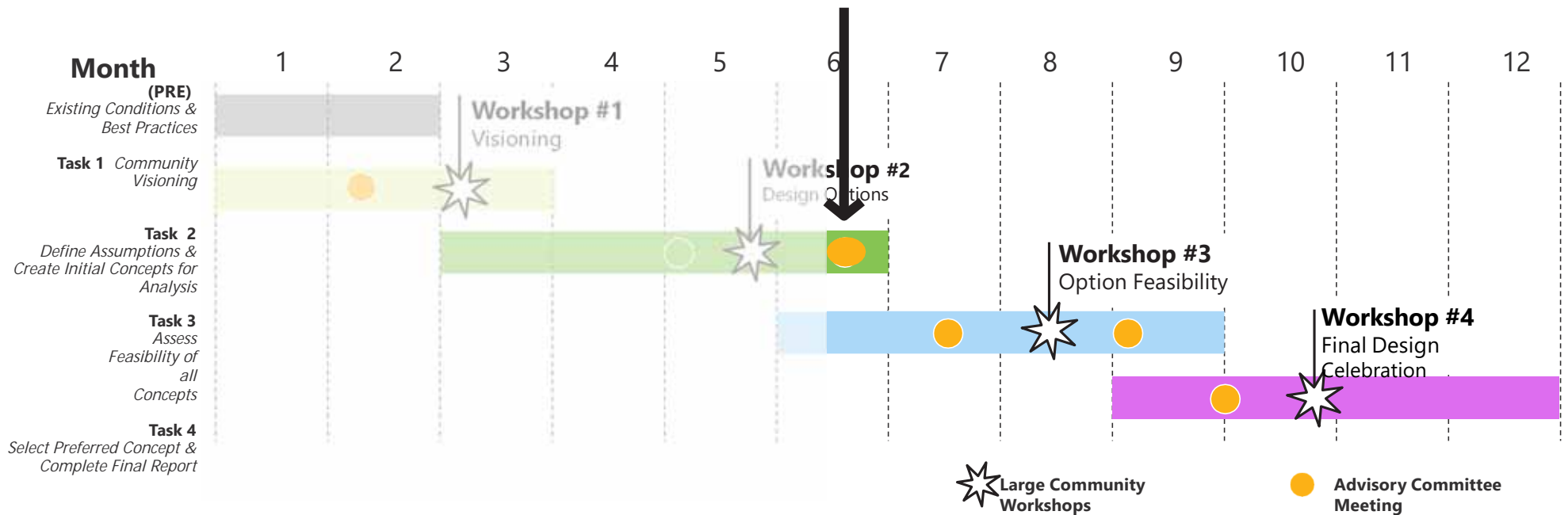
DEFINE ASSUMPTIONS AND
CREATE INITIAL CONCEPTS FOR
ANALYSIS

TASK 3

ASSESS FEASIBILITY OF ALL CONCEPTS

TASK 4

SELECT PREFERRED CONCEPT & COMPLETE FINAL
REPORT



Please take our quick survey on the project website:

<http://www.wilmapco.org/i95cap/>

Questions or Comments? Please contact Dave Gula dgula@wilmapco.org

