

# Churchman's Crossing Plan Update

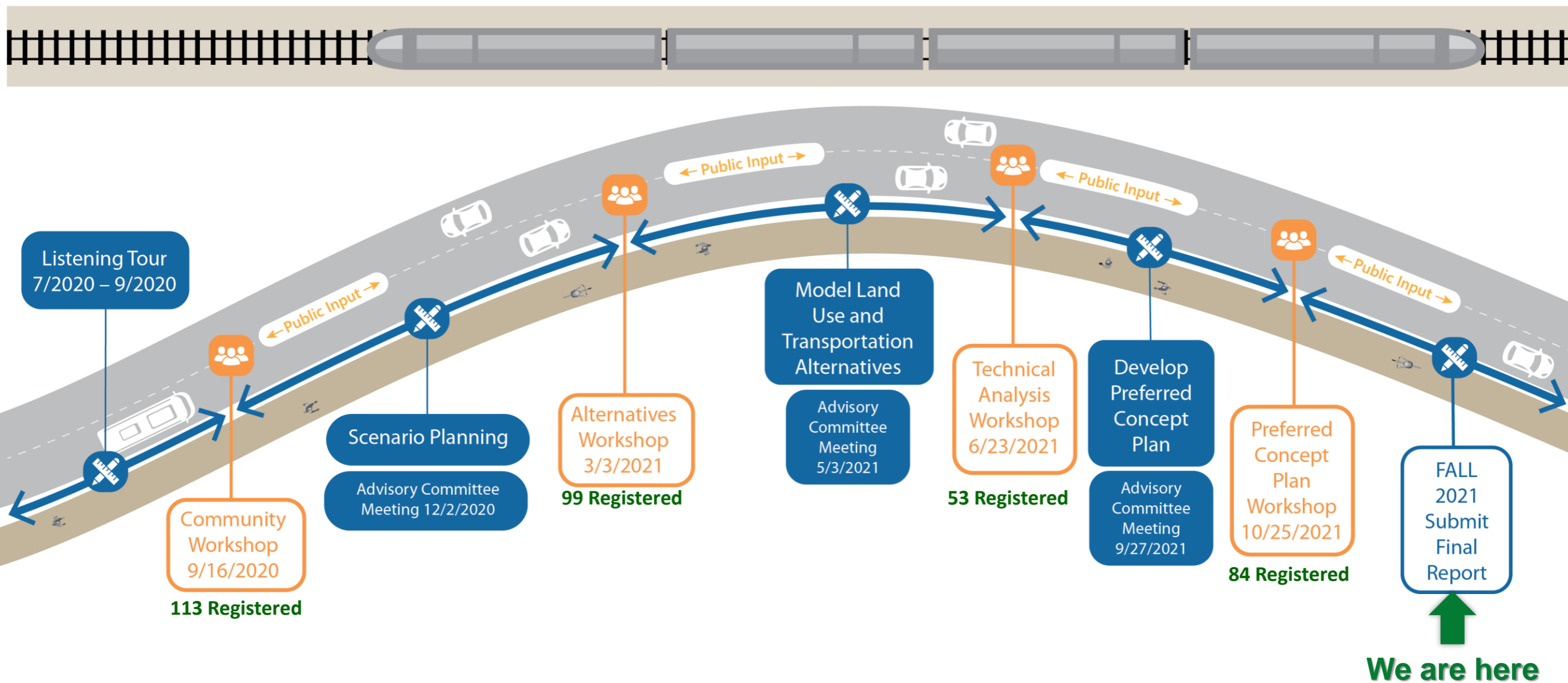


**WILMAPCO**



**WILMAPCO PAC Dec. 2021**

# Timeline



# Workshop #4 Highlights

- Provide an overview of the project and update on progress since the last Virtual Workshop held on June 23, 2021
- Present final analysis results/materials included in the Draft Report
- Share additional details on potential implementation strategies
- Details on new strategies such as TID and CCED (Appendix G)
- Seek feedback on the Draft Report for the Churchman's Crossing Plan Update

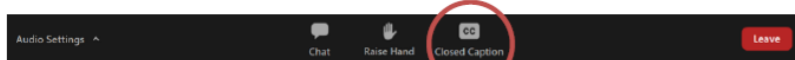


# Workshop #4 Highlights

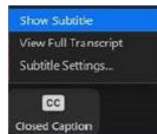
- Workshop featured Spanish-speaking translator on call:
  - Repeated intro in Spanish
  - Poll questions included Spanish Translation

## Closed Captions / Subtítulos

- Tenemos subtítulos en español para el taller público de esta noche



- Haga clic en el botón “Closed Caption” y seleccione “Show Subtitle” para activar los subtítulos o “View Full Transcript” para abrir la transcripción en un panel a la derecha



- También tenemos un intérprete disponible para ayudar con preguntas y respuestas después de la presentación



1. Which of the recommended transportation improvement projects do you think will have the most positive impact in the Churchman's Crossing area? Please check all that apply. ¿Cuál de los proyectos presentados cree que tendrá el impacto más positivo en el (Multiple Choice) \*

22/22 (100%) answered

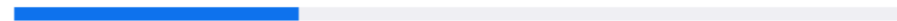
New multi-modal roadways (Churchman's Road Exte... (15/22) 68%



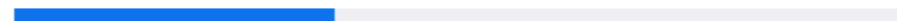
Capacity improvements on congested roads. / Mejor... (15/22) 68%



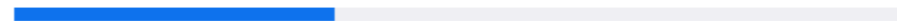
Improved access to I-95. / Acceso mejorado a la I-95. (7/22) 32%



Pedestrian and bicycle improvements. / Mejoradas pa... (8/22) 36%

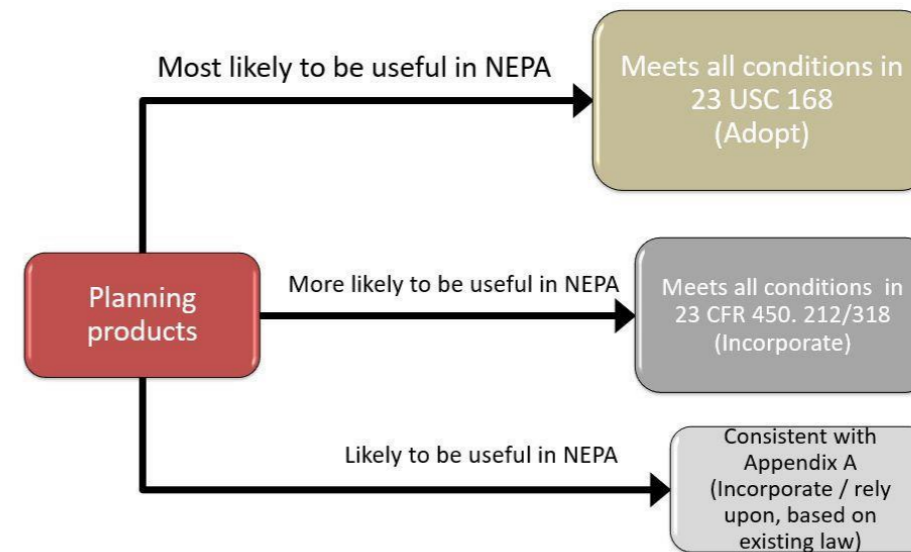
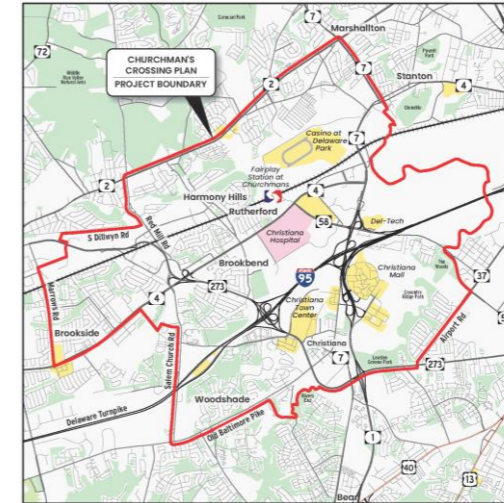


New transit services and improvements. / Nuevos serv... (8/22) 36%



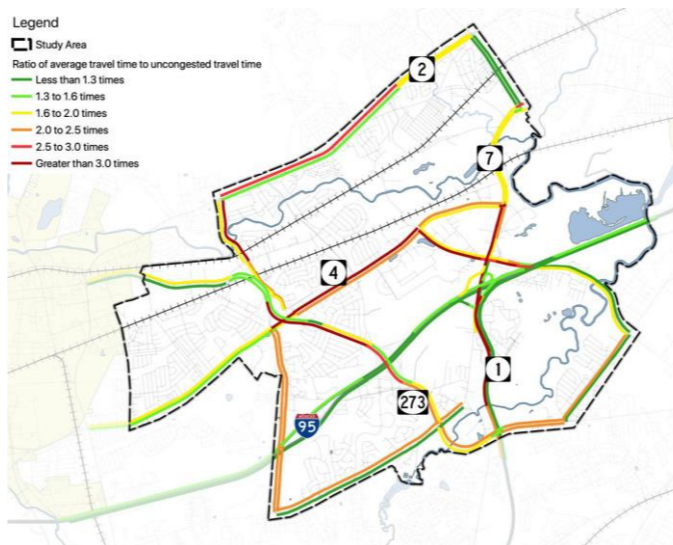
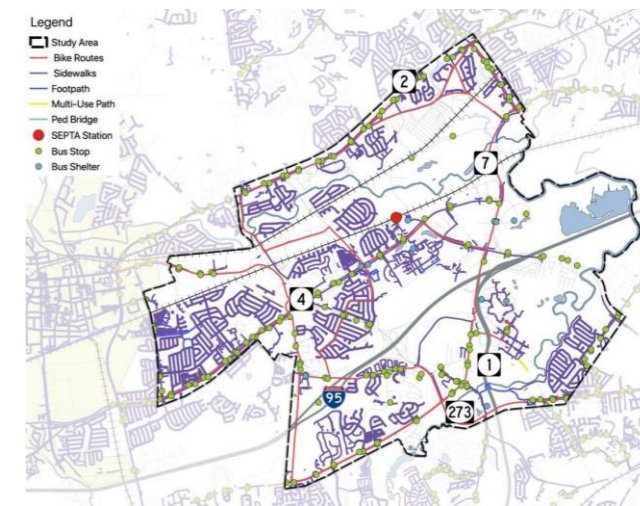
# Report Structure

- **Introduction & Planning Process**
- **Project Vision**
- Existing Conditions
- Alternatives Considered
- Transportation Alternatives Screening
- Preferred Concept Plan & Project Recommendations
- Next Steps



# Report Structure

- Introduction & Planning Process
- Project Vision
- **Existing Conditions\***
- Alternatives Considered
- Transportation Alternatives Screening
- Preferred Concept Plan & Project Recommendations
- Next Steps

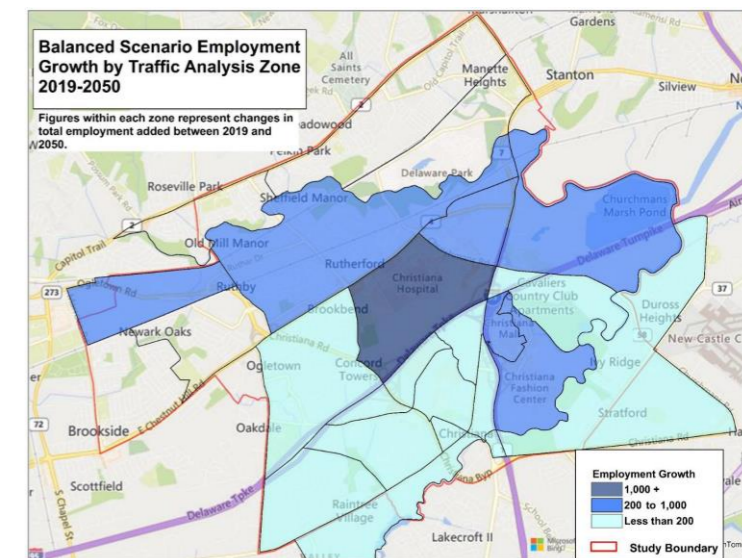
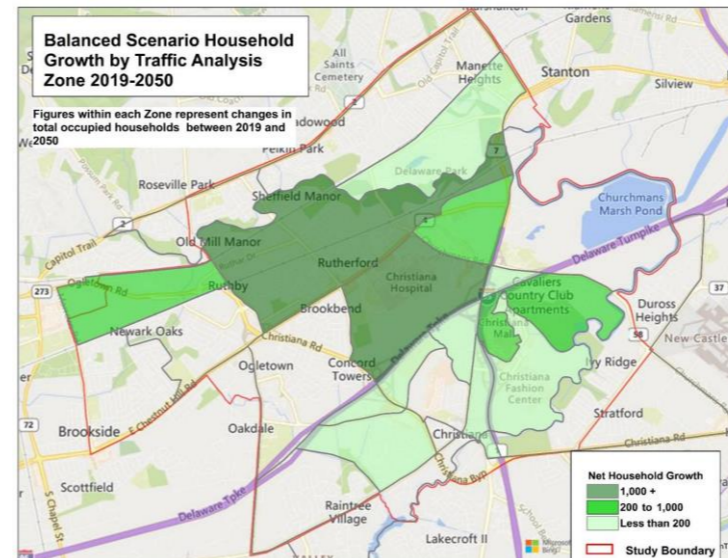


**\* Interactive map of all existing conditions (2019) available on website**

# Report Structure

- Introduction & Planning Process
- Project Vision
- Existing Conditions
- **Alternatives Considered**
- Transportation Alternatives Screening
- Preferred Concept Plan & Project Recommendations
- Next Steps

Transportation	
Land Use	Funded Expected
	Aspirational Expected
Land Use	Funded Balanced
	Aspirational Balanced



# Report Structure

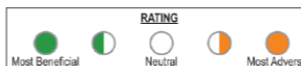
- Introduction & Planning Process
- Project Vision
- Existing Conditions
- Alternatives Considered
- **Transportation Alternatives Screening**
- Preferred Concept Plan & Project Recommendations
- Next Steps



## Churchman's Crossing Study PROJECT CRITERIA SUMMARY June 2021



		FUNDED	RTP ASPIRATIONS			ADDITIONAL PROJECTS																										
Transportation Improvement Alternative		RTP Financially Constrained Improvements	Churchmans Road Extended, SR 2 to SR 4	SR 273: 3rd lane NB & SB between SR 1 and I-95	Northbound I-95 Ramp to Chapman Road	SR 7 Intersections: SR 7/Telegraph Road, SR 7/Delaware Park Boulevard	Southbound I-95 Accesses from Continental Drive	Southbound SR 1 to Southbound I-95 Connection	Southbound SR 1 to Northbound I-95 Connection	Northbound I-95 Ramp from Churchmans Road	Southbound I-95 Ramp from Churchmans Road	Christiana Mail Access Road-Bus Only	Christiana Mail Road A Extension - East	Christiana Bypass	Eagle Run Rd. Connector to Samsoset Dr. (2nd I-95 Crossing)	Brownleaf Road Extension	Opening Samsoset Dr./Continental Dr.: SR 4 to Churchmans Road	Telegraph Road/SL James Road Railroad Underpass	Micro Transit (DTC)	Automated Transit Vehicles (DTC)	New bus transit routes Tetlow Mill and SR 7 - Pine Creek, SR 2 - Pines Corner, SR 14 & SR 273 - New Castle, US 13 - Lurganville, SR 273 - Milton, SR 2 & SR 4 - Newark			Transit Access Improvements: Bus pads, shelters, accessible pathways/routes, etc.			Pedestrian/Bicycle improvements along Existing Roads		Pedestrian/Bicycle Connections Serving Existing Communities		SR 273: 3rd lane NB & SB between I-95 and SR 4	SR 273 at I-95 interchange Reconfiguration
Map		A-R	S	U	V	W	X	Y	Z	AA	BB	CC	DD	GG	HH	II	JJ	KK	EE	FF	LL	MM	NN	OO	PP	QQ						
CRITERIA	Connectivity		●	○	◐	○	◐	◐	◐	◐	◐	◐	●	◐	○	◐	◐	○	◐	◐	◐	◐	◐	○	○	○						
	Extent of Effect – Person Miles Traveled		●	●	○	●	○	○	○	○	○	○	◐	○	○	○	○	○	○	○	○	○	○	○	○	○						
	Congestion		●	●	○	◐	●	●	●	●	◐	●	○	○	◐	◐	●	●	○	○	○	○	○	○	●	●						
	Transit Enhancement Opportunities		●	○	○	◐	●	●	●	●	◐	◐	●	○	○	○	◐	●	◐	●	●	○	●	●	○	○						
	Mode Share		○	◐	◐	◐	◐	◐	◐	◐	◐	◐	◐	○	○	○	○	○	◐	◐	○	○	○	○	○	○						
	Bicycle & Pedestrian Level of Traffic Stress		●	●	◐	◐	◐	○	○	○	◐	◐	◐	◐	○	○	○	◐	○	○	○	○	◐	◐	◐	●	●					
	Economic Development / Re-Development Opportunities		●	○	○	○	○	◐	○	○	○	○	○	◐	●	○	◐	○	○	●	●	○	●	●	○	○						
	Safety		○	○	◐	●	◐	◐	○	◐	●	●	●	○	○	○	○	○	●	●	◐	○	●	●	○	●						
	Constructability / Engineering / Legal		◐	◐	○	○	◐	◐	◐	○	●	●	●	◐	○	○	○	◐	●	○	◐	○	○	○	○	●	◐					
	Natural Environment Impacts		◐	○	○	○	○	○	○	○	●	●	○	●	●	○	○	○	○	◐	◐	○	○	○	○	○	○					
	Cultural / Historic Resource Impacts		○	○	○	○	○	○	○	○	◐	○	○	●	◐	○	○	○	○	○	○	○	○	○	○	○	○					
	Noise / Property Impacts		◐	○	○	◐	○	○	○	○	◐	◐	○	●	◐	○	●	●	○	◐	◐	○	◐	○	○	●	○					
Cost		\$377.3M	\$85.0M	\$33.0M	\$3.8M	\$3.7M	\$2.5M	\$11.1M	\$1.9M	\$7.1M	\$25.0M	\$0.9M	\$34.0M	\$19.3M	\$54.0M	\$5.0M	\$7.2M	\$1.9M	\$0.5M	\$1.2M	\$6.0M	\$5.0M	\$10.0M	\$10.0M	\$40.0M	\$37.0M						



# Report Structure

- Introduction & Planning Process
- Project Vision
- Existing Conditions
- Alternatives Considered
- Transportation Alternatives Screening
- **Preferred Concept Plan & Project Recommendations**
- Next Steps

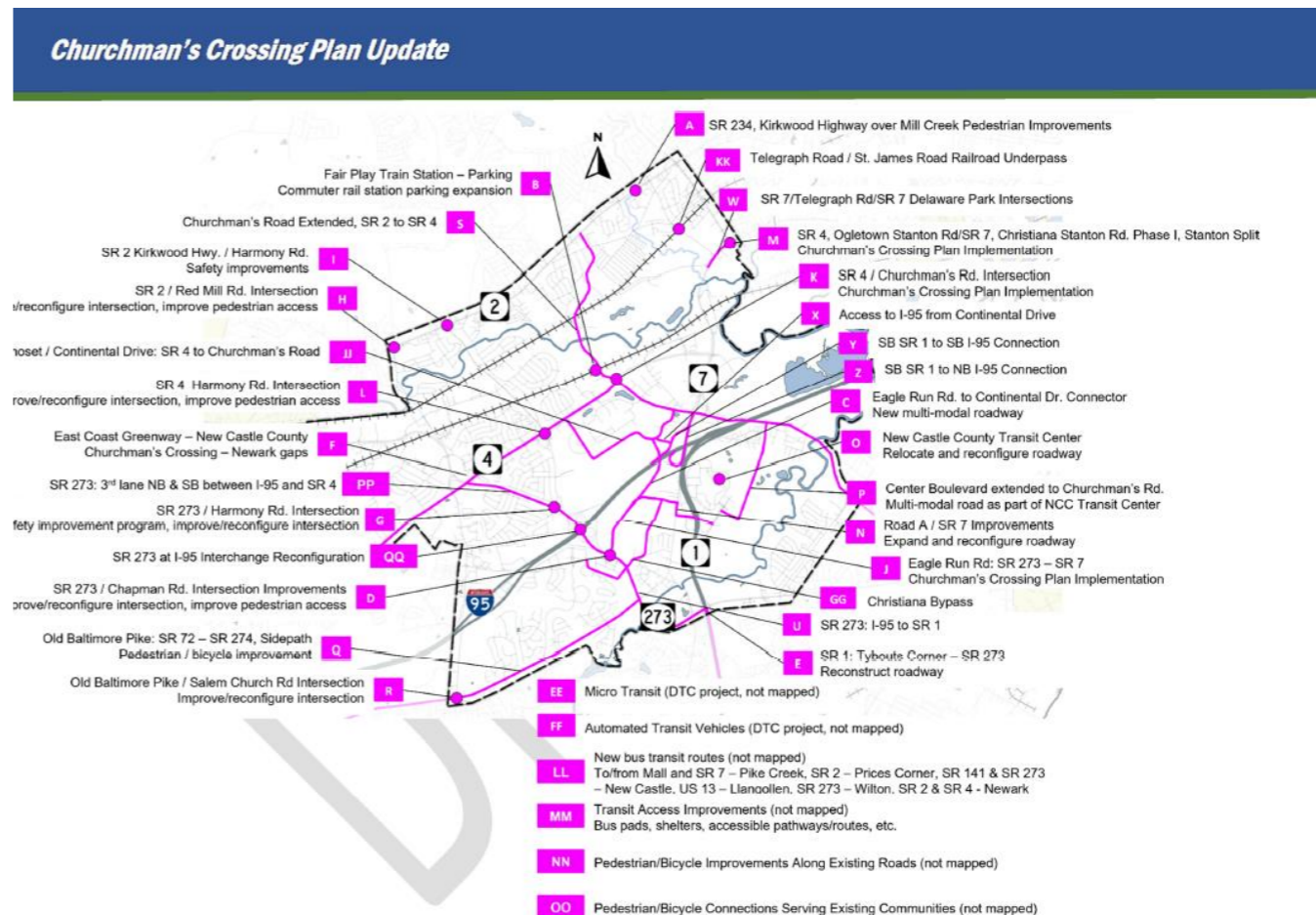
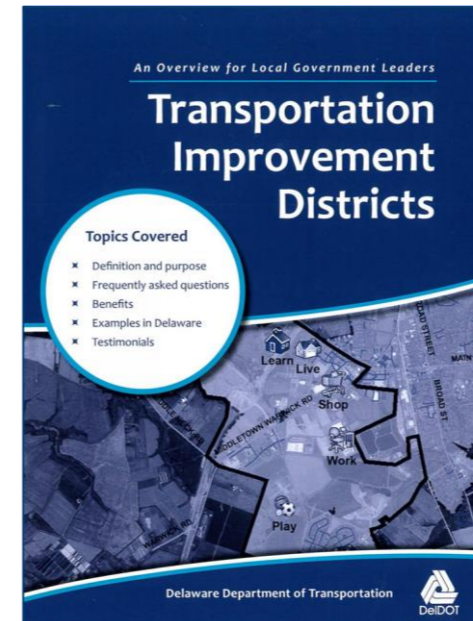


Figure 29: Recommended Transportation Improvements

# Report Structure

- Introduction & Planning Process
- Project Vision
- Existing Conditions
- Alternatives Considered
- Transportation Alternatives Screening
- Preferred Concept Plan & Project Recommendations
- **Next Steps**



# Report Structure

## Appendices

- A: FHWA PEL Checklist
- B: Turning Movement Forecasts
- C: CMS Analysis Worksheets
- D: Stakeholder and Public Engagement Materials
- E: Scenario Planning Methodology and Results
- F: Cost Estimates
- G: TID Strategic Plan
- H: Summary of Comments and Responses

### POLL QUESTION #3

- We want to see more of this in Churchman's Crossing in the next 20 years:

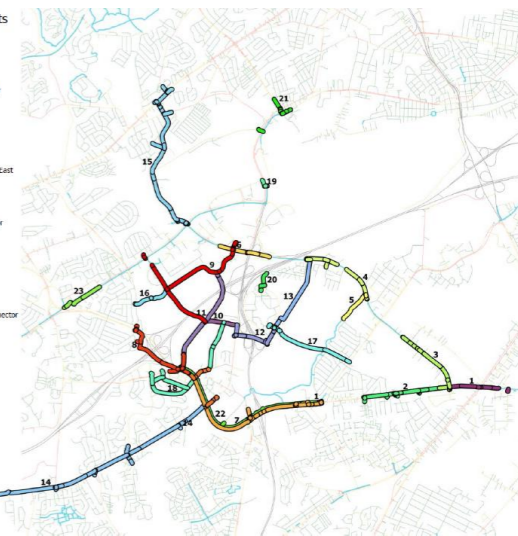
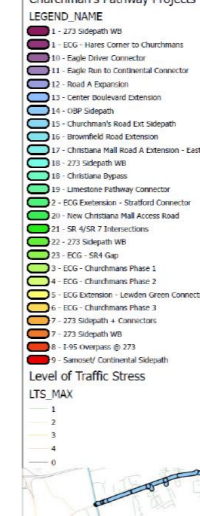


CHURCHMAN'S CROSSING PLAN UPDATE

CHURCHMAN'S CROSSING | MODEL LINKS BY SUBAREA



Churchman's Pathway Projects



# Materials Available on Website

- Draft Report – including Appendices
- Interactive recommendations map
- Recordings and materials from previous Virtual Public Workshops and Advisory Committee Meetings
- Topic-specific clips
- Other supporting technical documents
- Previous studies

## Churchman's Crossing Plan Update

### About the Study

WILMAPCO, DeIDOT, and New Castle County Department of Land Use are developing a comprehensive update to the 1997 Churchman's Crossing Plan. Details of the 1997 Plan and subsequent monitoring efforts can be found below. The current Churchman's Crossing Plan Update will include new recommendations on transportation improvements, land use strategies, and transportation demand management (TDM) strategies. The Churchman's Crossing Plan Update will take a little more than one year to complete, with anticipated completion in Fall 2021.

### Churchman's Crossing Study Draft Plan

- Churchman's Crossing Plan Update Final DRAFT Report
  - Interactive Map of Recommended Transportation Improvements
- DRAFT Appendix A: Planning & Environmental Linkages (PEL) Checklist
- DRAFT Appendix B: Intersection Turning Movement Forecasts
- DRAFT Appendix C: Intersection Critical Movement Summation (CMS) Analysis
- DRAFT Appendix D: Stakeholder and Public Engagement Materials
- DRAFT Appendix E: Scenario Planning Summary
- DRAFT Appendix F: Project Cost Estimates
- DRAFT Appendix G: TID Strategic Plan

### October 25, 2021 – Public Workshop #4

This meeting was the fourth and final meeting which included an overview of prior activities, final results of more detailed land use and transportation alternatives analysis, and an additional details on potential implementation tools.

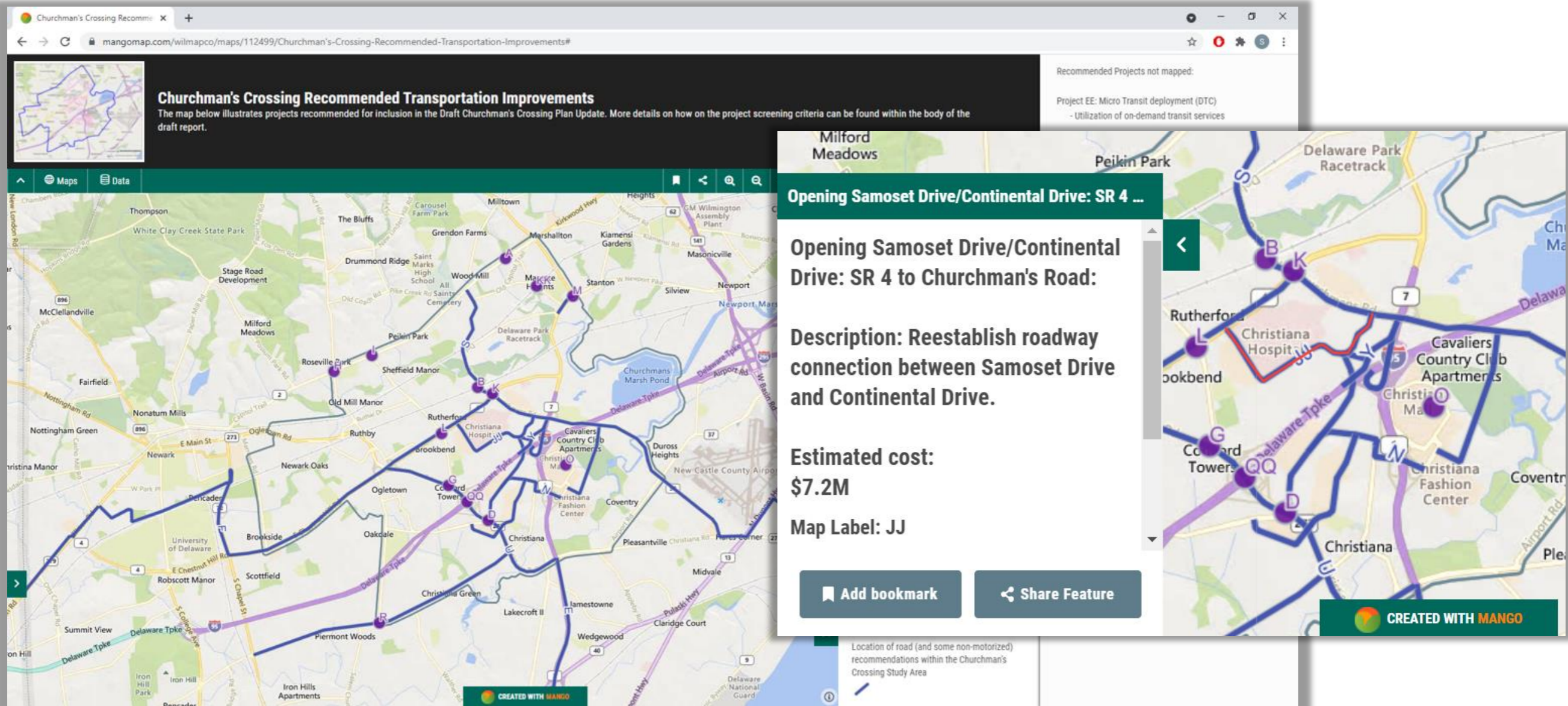
- Public Workshop #4 Presentation (PDF)
- Public Workshop Meeting Recording
- Workshop Poll Results
- Workshop Chat Log
- Transcripción en español del taller virtual 4 de Churchmans Crossing

### September 27, 2021 – Advisory Committee Meeting #3

This meeting was the third and final meeting which included an overview of prior activities, preliminary results of more detailed land use and transportation alternatives analysis, and an additional details on potential implementation tools.

<http://www.wilmapco.org/Churchmans/>

# Interactive Map of Recommended Transportation Improvements



# Next steps

- Finalize Churchman's Crossing Plan Update Report

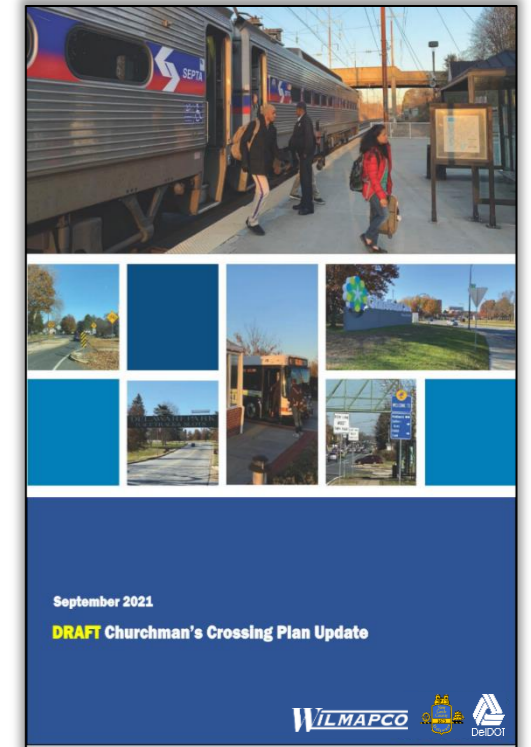
- Future Steps by Agency Partners

## ***WILMAPCO***

- Approve Churchman's Crossing Plan Update (Jan. 2022)
- Include recommended projects in RTP & TIP
- Develop monitoring program for Churchman's Crossing

## ***Implementing Agencies (DeIDOT & NCC)***

- Complete NCC@2050 planning process (by NCC)
- Adopt NCC@2050 (by NCC)
- Continue implementation discussions, including TID & CCED
- Include recommended projects in CTP (by DeIDOT)





**Questions?**

