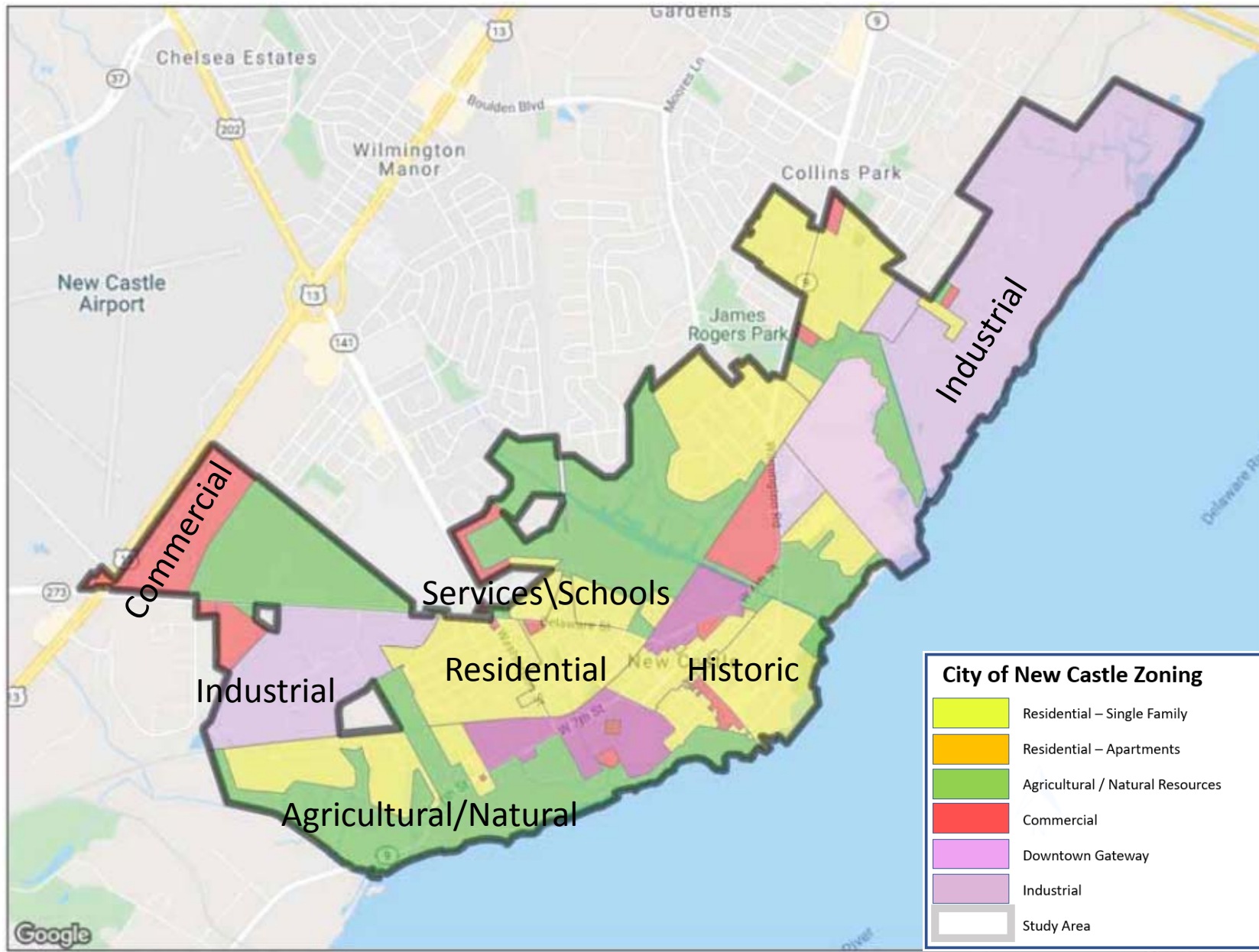


City of New Castle Transportation Plan Update Public Advisory Committee October 18, 2021





The purposes of this Plan are to:

1

Improve multimodal network, provide connectivity to communities / trails, enhance health and livability, reduce illegal truck traffic, and improve safety

2

Address flooding and sea-level rise impacts on land use and access to major transportation corridors

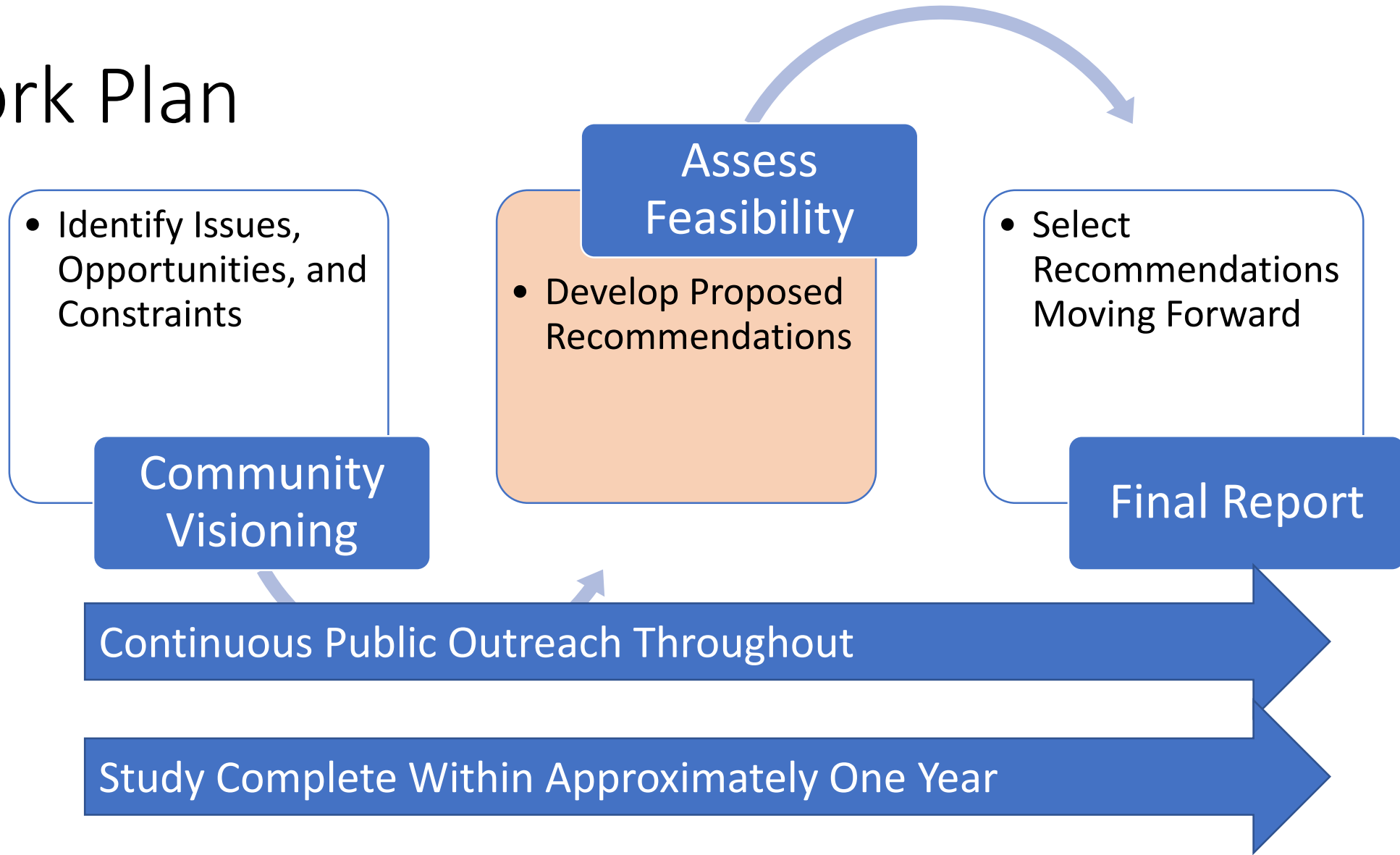
3

Improve gateways to the historic city

4

Develop a shared-parking analysis

Work Plan



Public Involvement

Planning Partners

- WILMAPCO
- City of New Castle
- DeIDOT / DART
- Assisted by Century Engineering

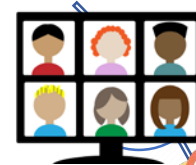
Advisory Committee

- Local organization reps
- Other state / county reps
- Gives ongoing input on outreach and recommendations

Public

- **Broad participation needed so plan reflects community priorities**

Public Workshops



2/10 Visioning Workshop



Online Wikimap



7/28 Pop-up Kiosk



9/13 Alternatives Presentation



11/9 City Council Workshop



Alternatives Moving Forward (TBD)

Agenda

- Welcome / Introductions
- Plan Purpose and Process
- Breakout Rooms:
 - Bike/Ped & Transit
 - Traffic, Freight & Parking
 - Environment, Flooding & Streetscape
- Wrap up / Q & A

City of New Castle Transportation Plan

Visioning Public Workshop

Share your vision at an interactive virtual meeting to help update the New Castle Transportation Plan.

February 10, 2021
7:00 PM to 9:00 PM
Location: ONLINE

We are seeking your feedback about transportation in the City of New Castle including your ideas about traffic, connectivity, bicycling and walking, transit, parking, freight, and flooding.

Register to attend at
www.wilmapco.org/cityofnewcastle

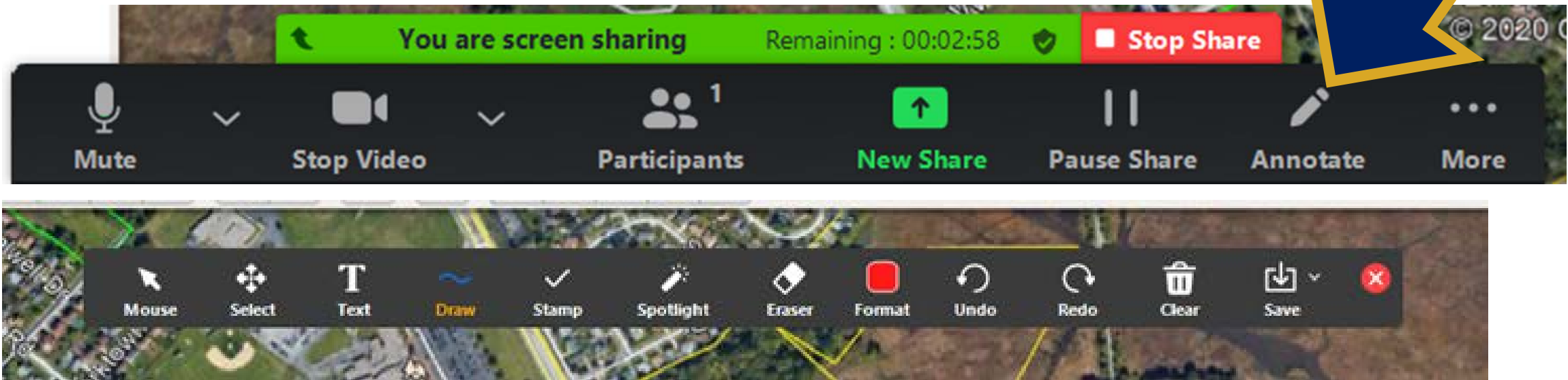
If, because of a disability, you require special assistance, please contact WILMAPCO at (302) 737-6205 no later than 3 business days before this event.

Breakout Session Instructions

- Automatically transported into the Breakout Session and back
- Moderator
- Sessions will be recorded
- Maps for reference
- Each Session will have a topic



- *9 – Raise Hand
- *6 – Unmute/Mute





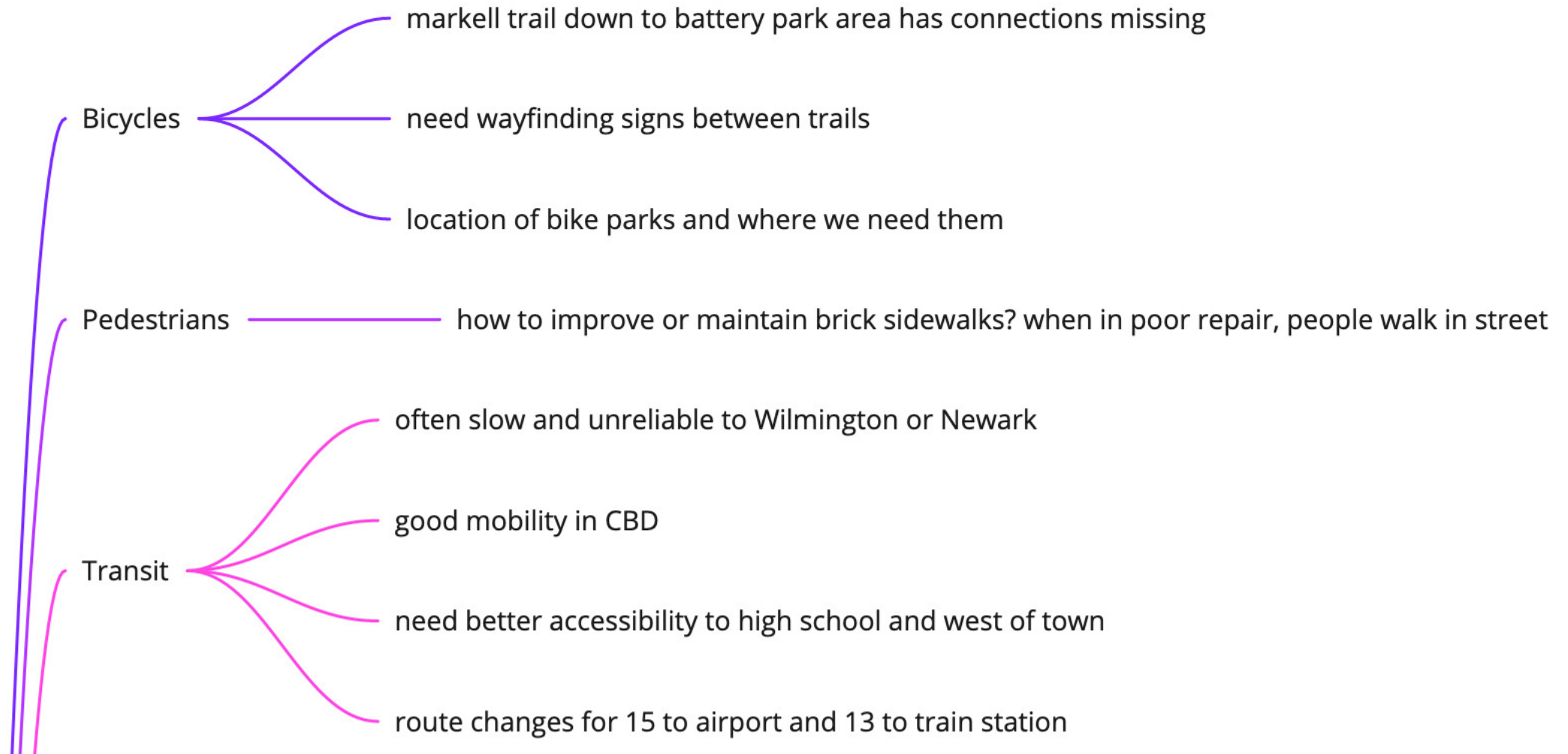
ZOOM BREAKOUT ROOMS

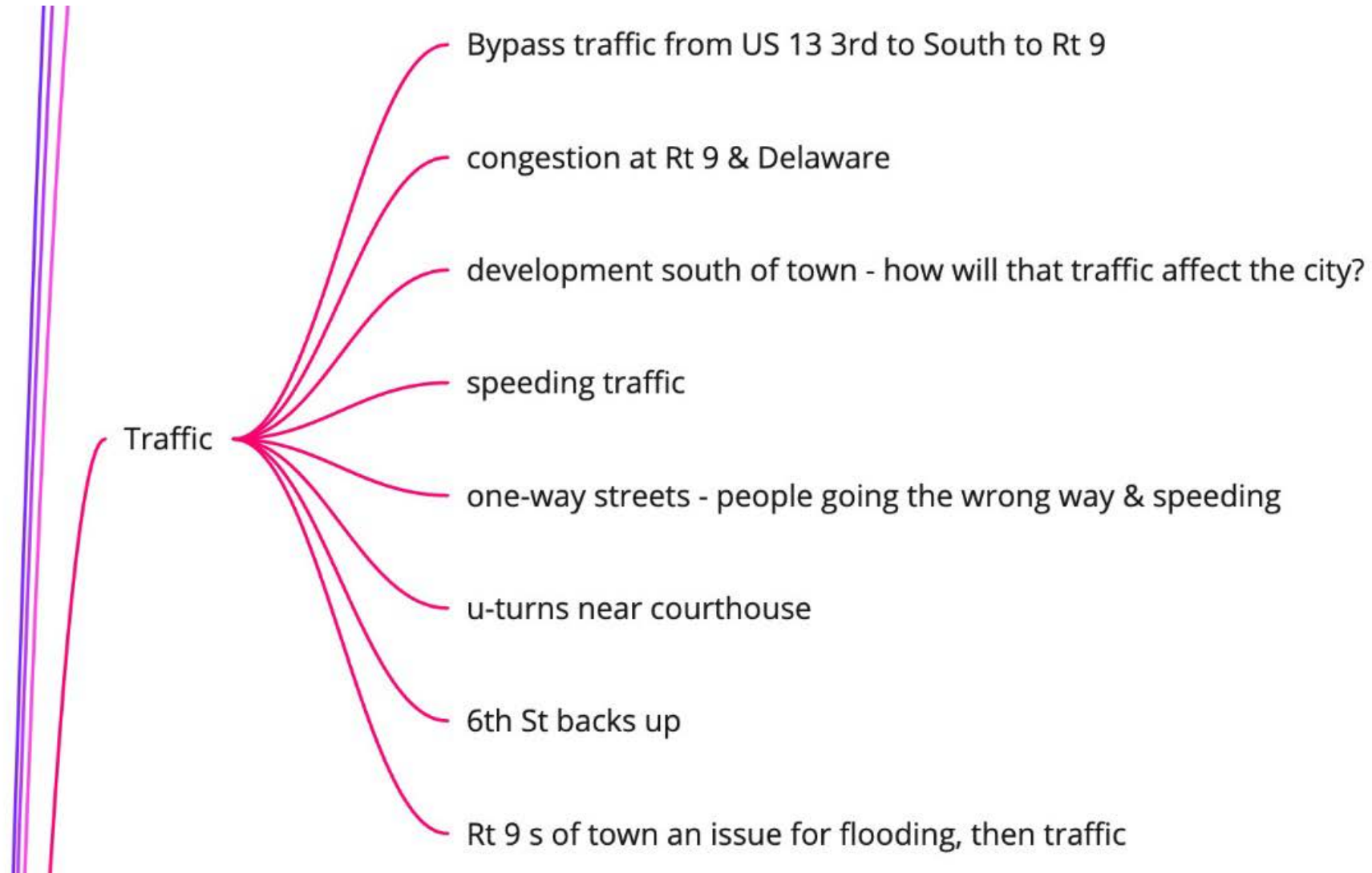
Small group conversations

Used Google Earth maps and Zoom annotation tools.

Each session introduced with short presentation

Moderators reported back after each







Other Issues

- some rivalry between commercial and residential interests
- additional traffic from attractions like Kalmar Nickel?
- don't just re-hash studies from years ago

Intersections

- 273 & 9 ————— needs better signage - some people stop when they don't have to
- near shopping center light ————— button for crosswalk not ada accessible
- rt 9 north of town very difficult
- ferry cutoff and turn to Delaware St
- 7th St over to Delaware St
- 273 & 7th St
- Harris corner
- 273-141

Tell us your transportation ideas for the City of New Castle

Wednesday, July 28
(rain date August 4)
Drop by from 6 - 8 p.m.
Battery Park near Delaware St



Agenda

- Presentation with Poll Questions
- Q & A



City of New Castle Transportation Plan

SHARE YOUR IDEAS

Public Workshop will seek your feedback about potential improvements for walking, bicycling, parking, driving, flooding, and freight.

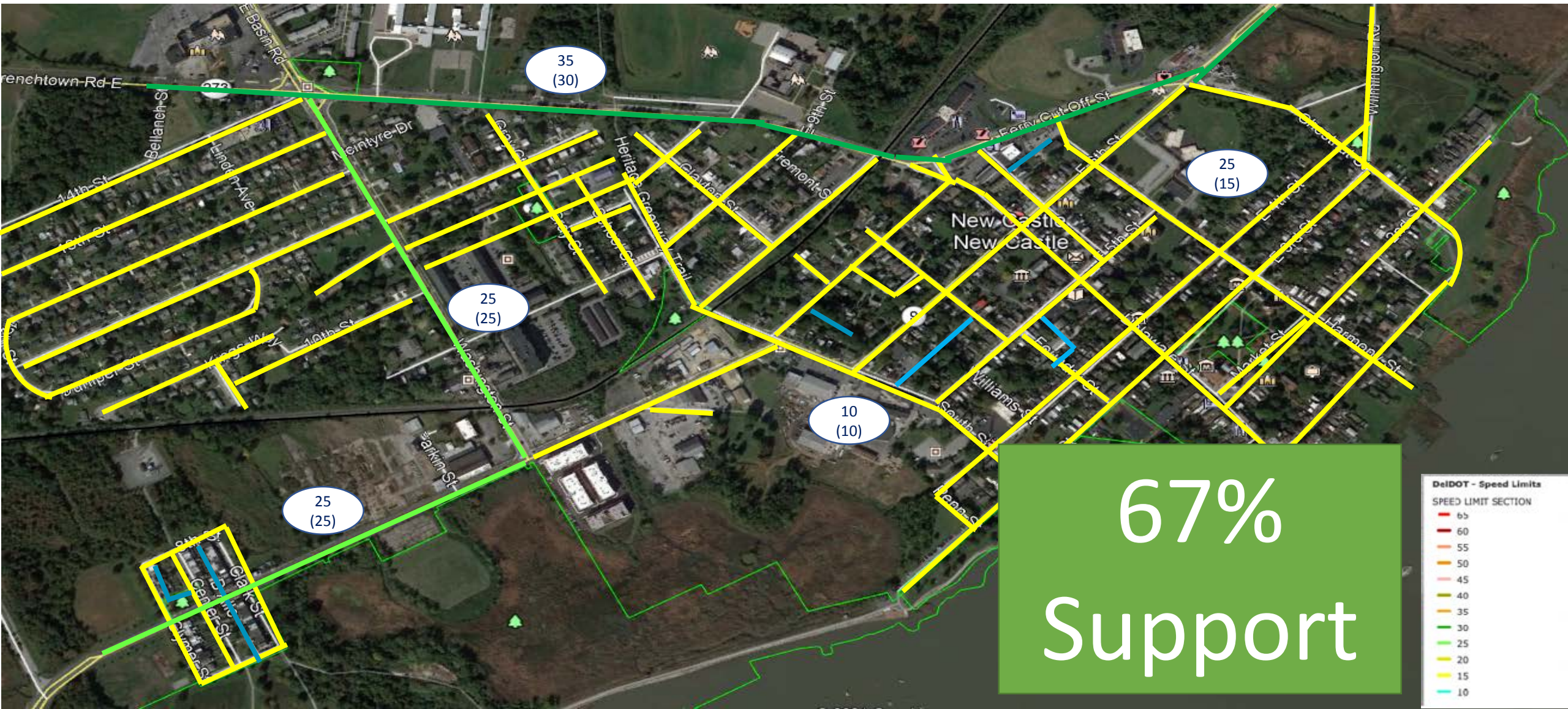
ONLINE: MONDAY, SEPTEMBER 13, 7 P.M.
IN-PERSON: OCTOBER (DETAILS TBD)

Presented by WILMAPCO, the City of New Castle, and DelDOT

Register for **FREE** at
www.wilmapco.org/cityofnewcastle
Contact us online or at 302-737-6205 ext 118
with any questions



Reduced Speed Limits



Strategic Projects

Areas of Concern: Traffic Congestion, Cut-Through Traffic, Truck Traffic



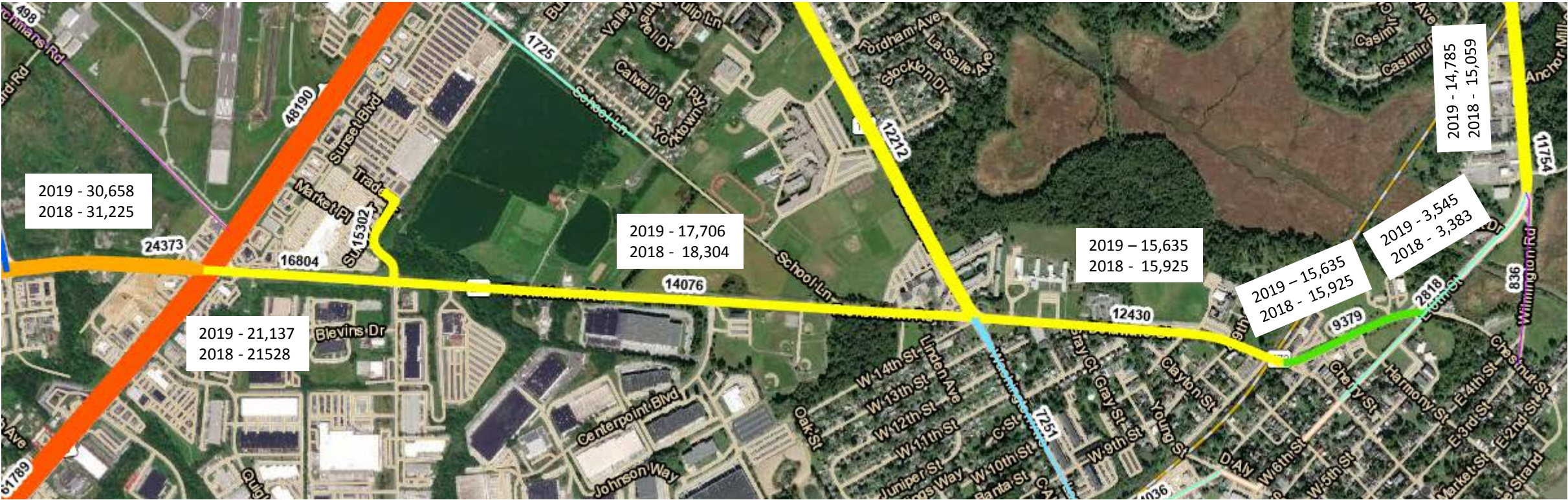
US 13/SR 273 Intersection

- Identified In DelDOT's Safety Program
- DelDOT Feasibility Study



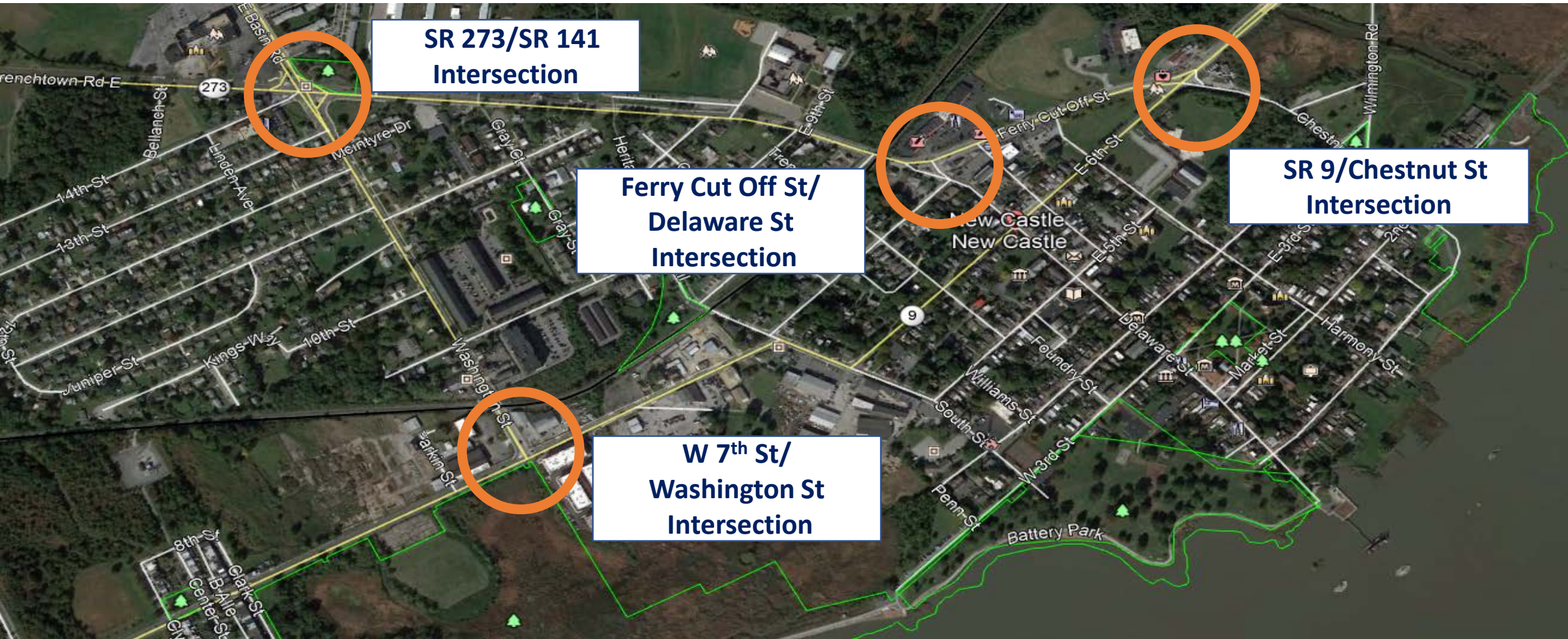
Roadway Capacities

- Frenchtown Road/Delaware Street/Ferry Cut Off Street

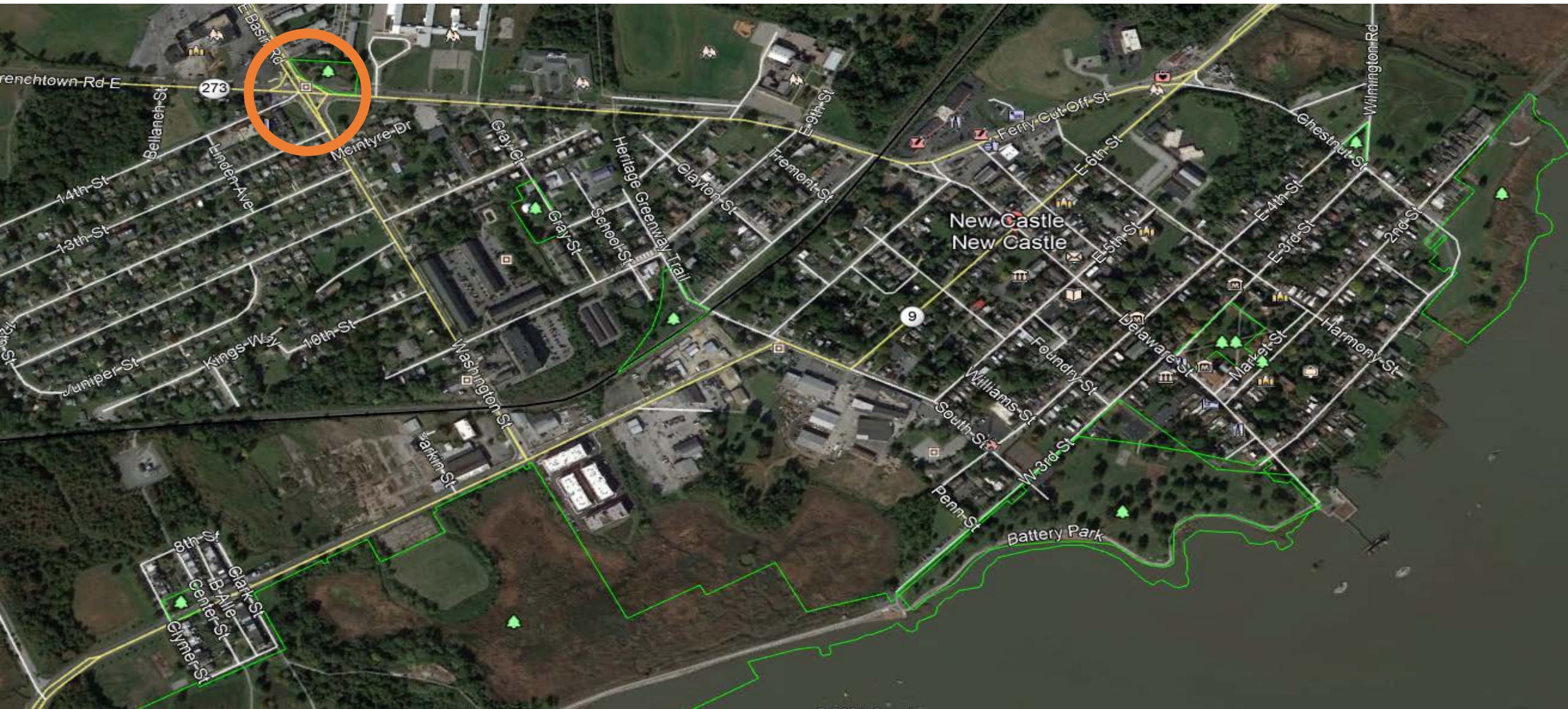


Strategic Projects -

Areas of Concern: Traffic Congestion, Cut-Through Traffic, Truck Traffic, Bicycle / Pedestrian Access



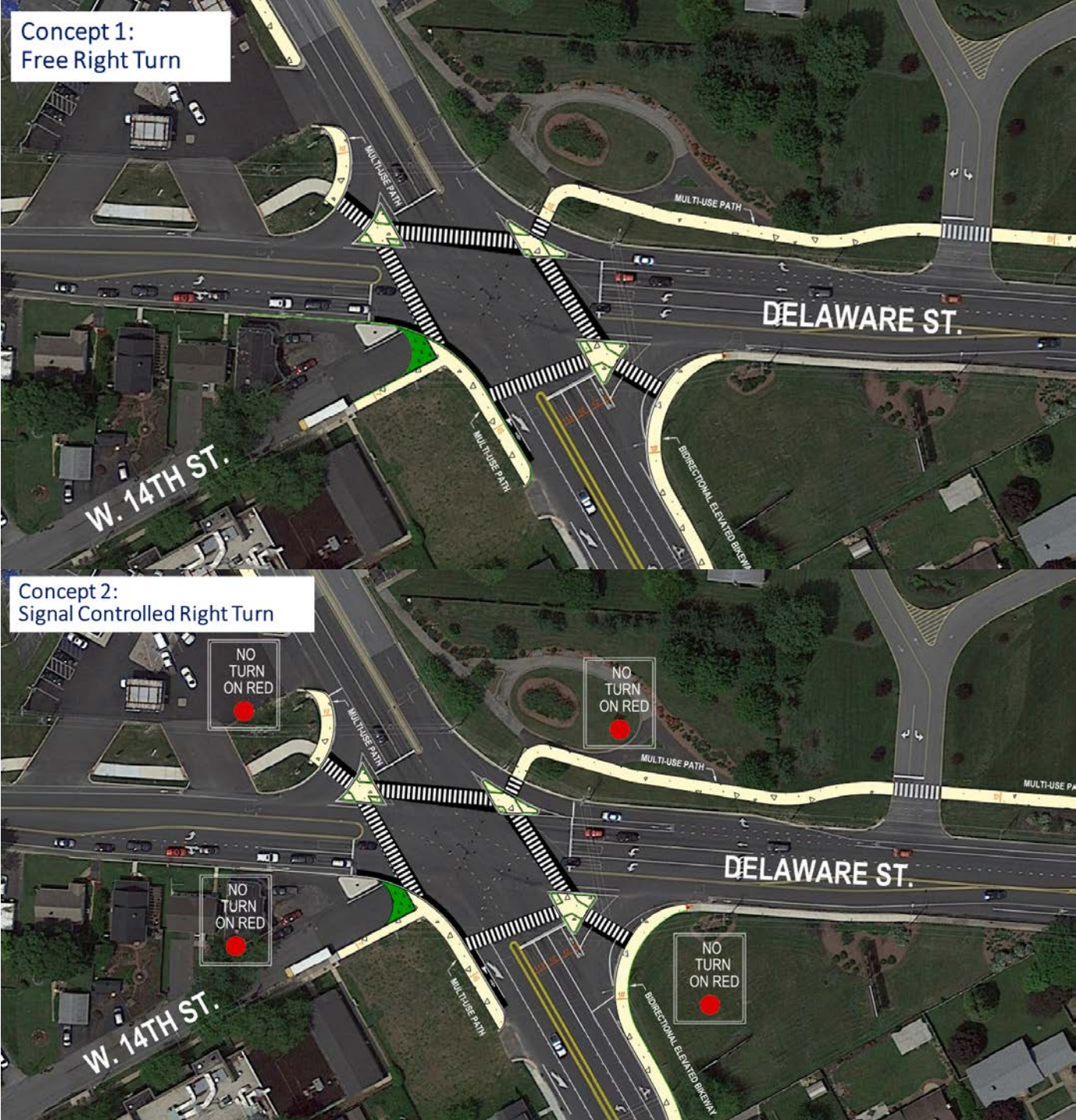
SR 273 / SR 141 Intersection



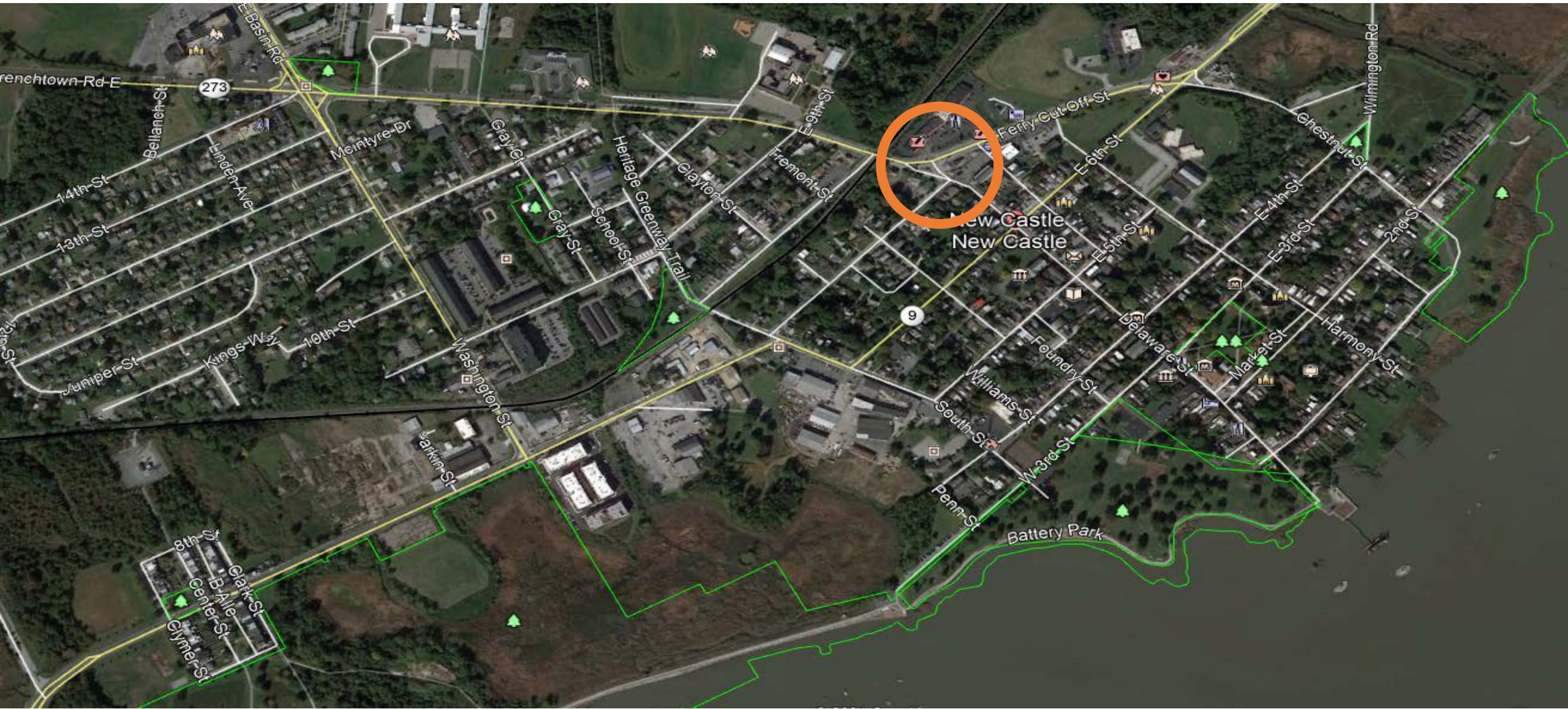
Existing SR 273 / SR 141 Intersection



Concept	Percent Support
Concept 1	33%
Concept 2	33%
Both	7%
Neither	22%
Unsure	4%



Ferry Cut Off Street / Delaware Street Intersection



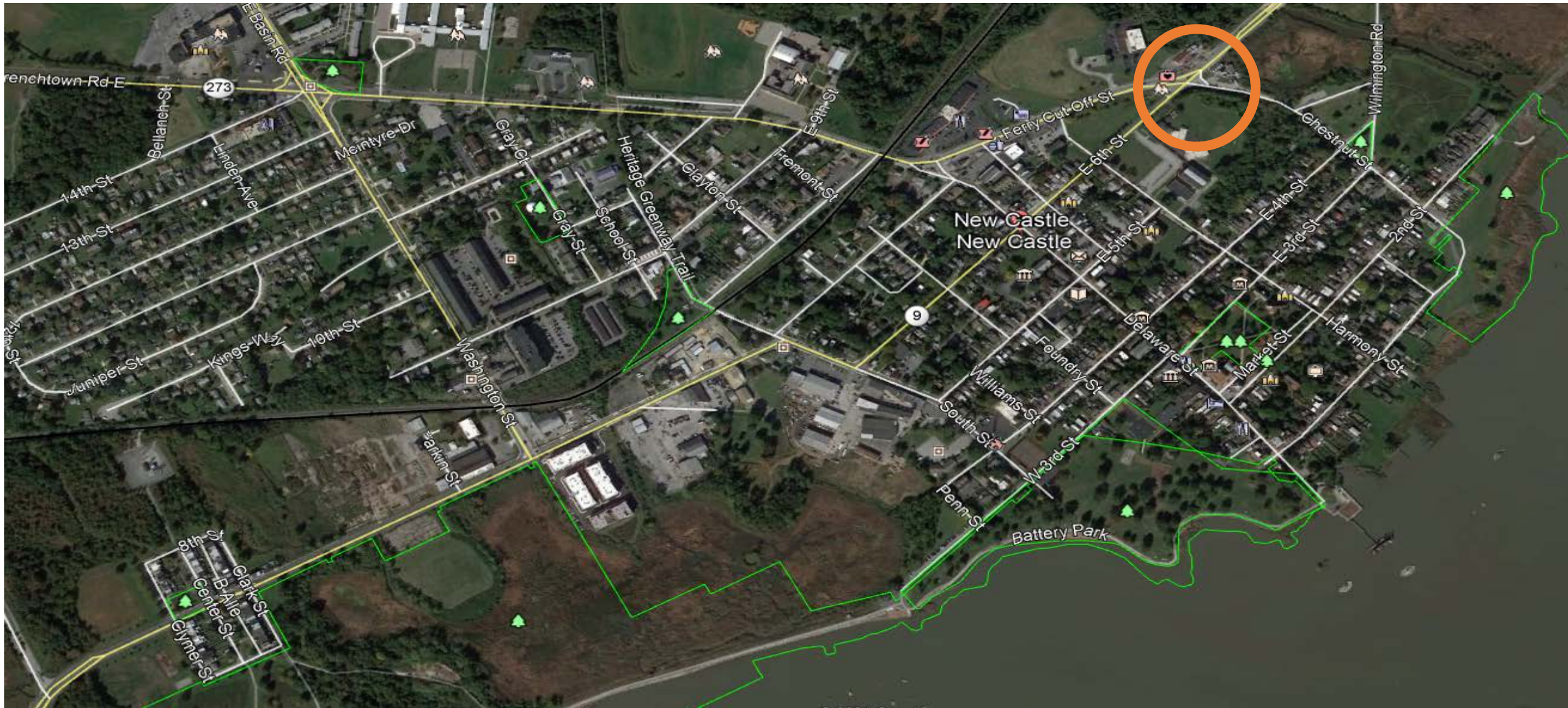
Existing Ferry Cut Off Street / Delaware Street Intersection



Concept	Percent Support
Concept 1	10%
Concept 2	55%
Both	24%
Neither	10%
Unsure	0%



Ferry Cut Off Street / E 6th Street / Chestnut Street Intersection



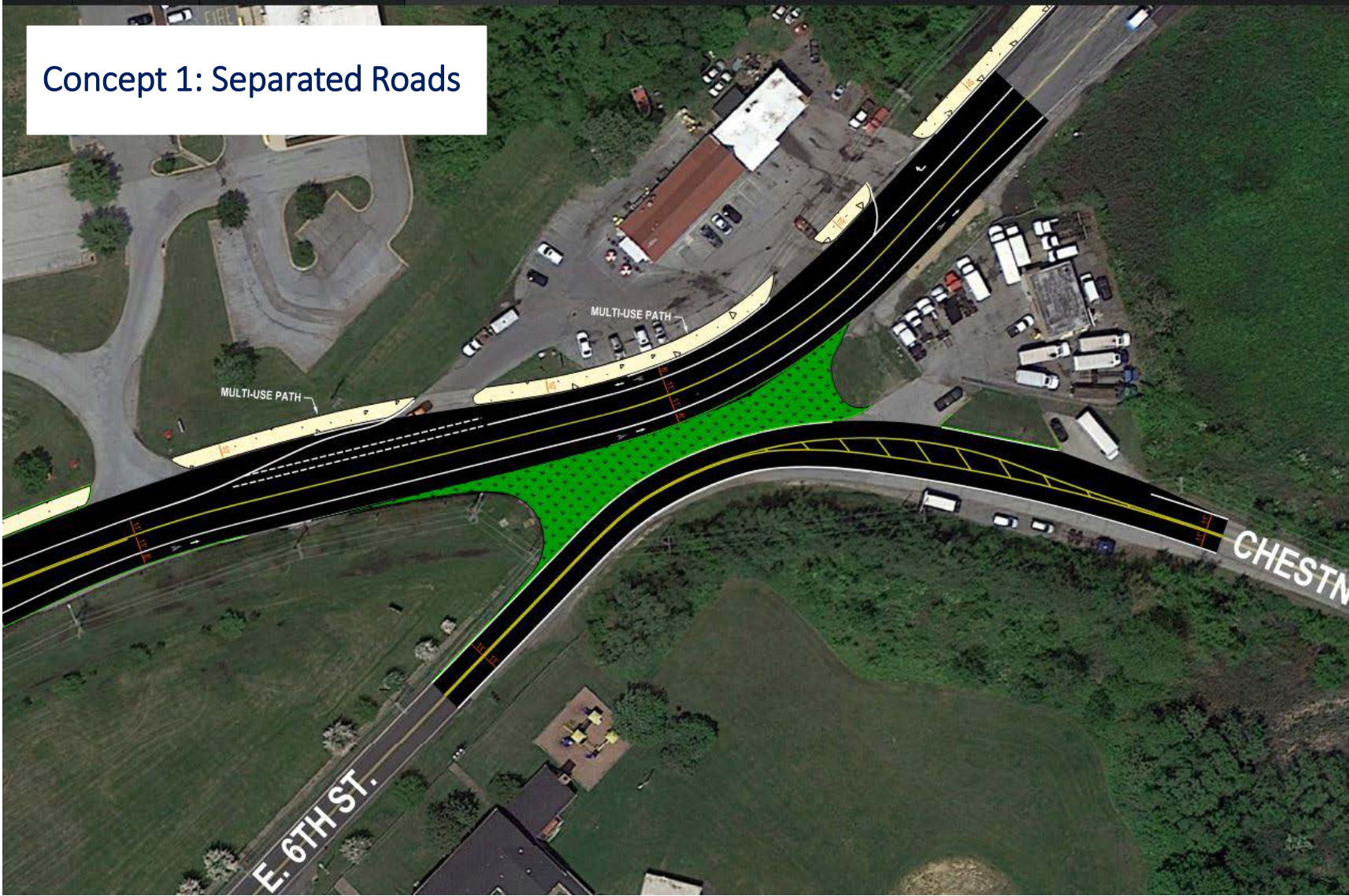
Design Conditions

- Existing Ferry Cut Off St/E 6th St/Chestnut St
- Old Road Structure Still Exists
- 6th St Functions as Through Route and Ferry Cut Off Street Functions Side Street
- Misleading Roadway Geometry
- High Speed
- Entering and Exiting is Difficult
- Crossing is Unsafe
- No Dedicated Bicycle Facilities
- Maintain Existing Access



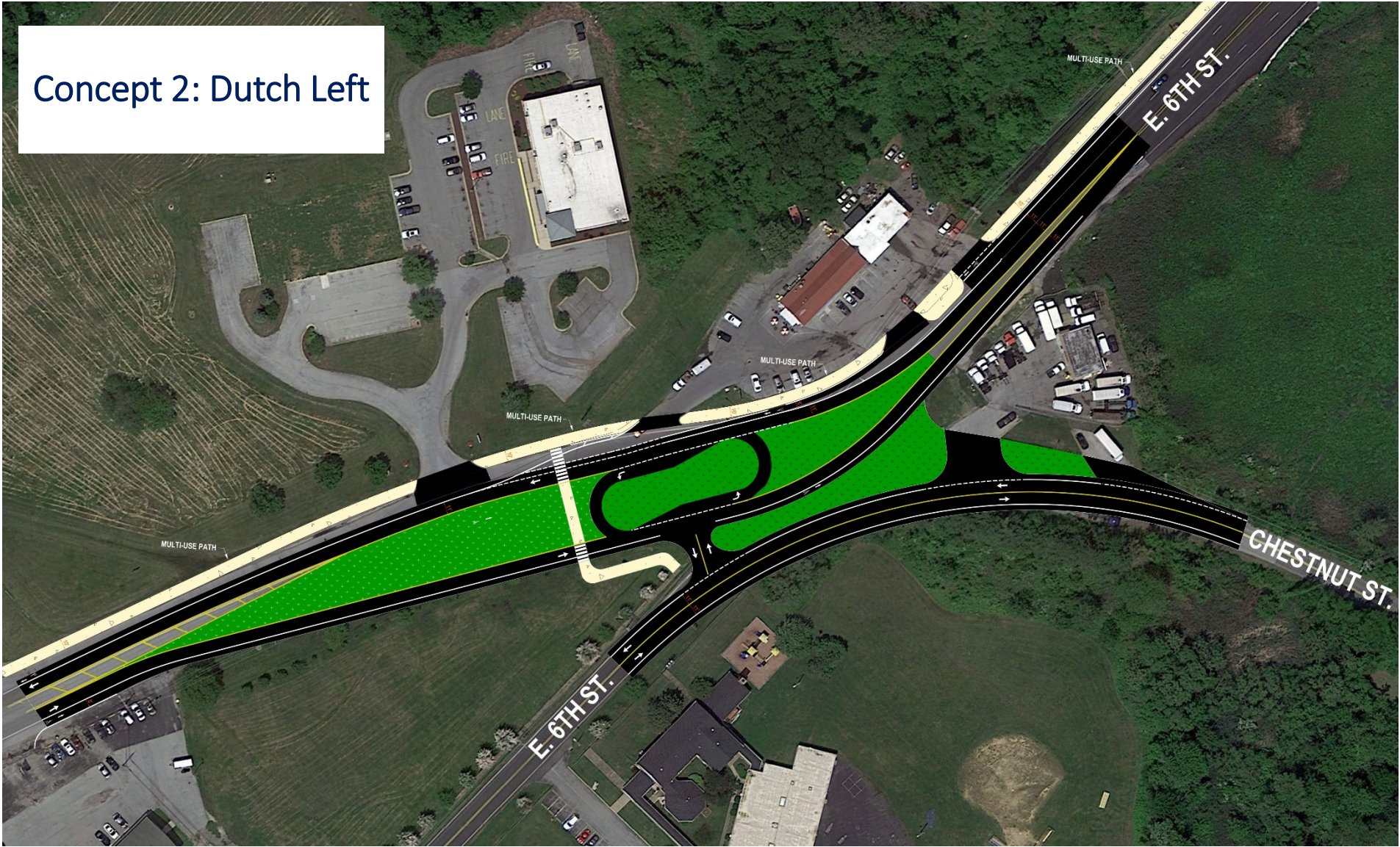
Ferry Cut Off Street / E 6th Street / Chestnut Street Intersection Concept

Concept 1: Separated Roads



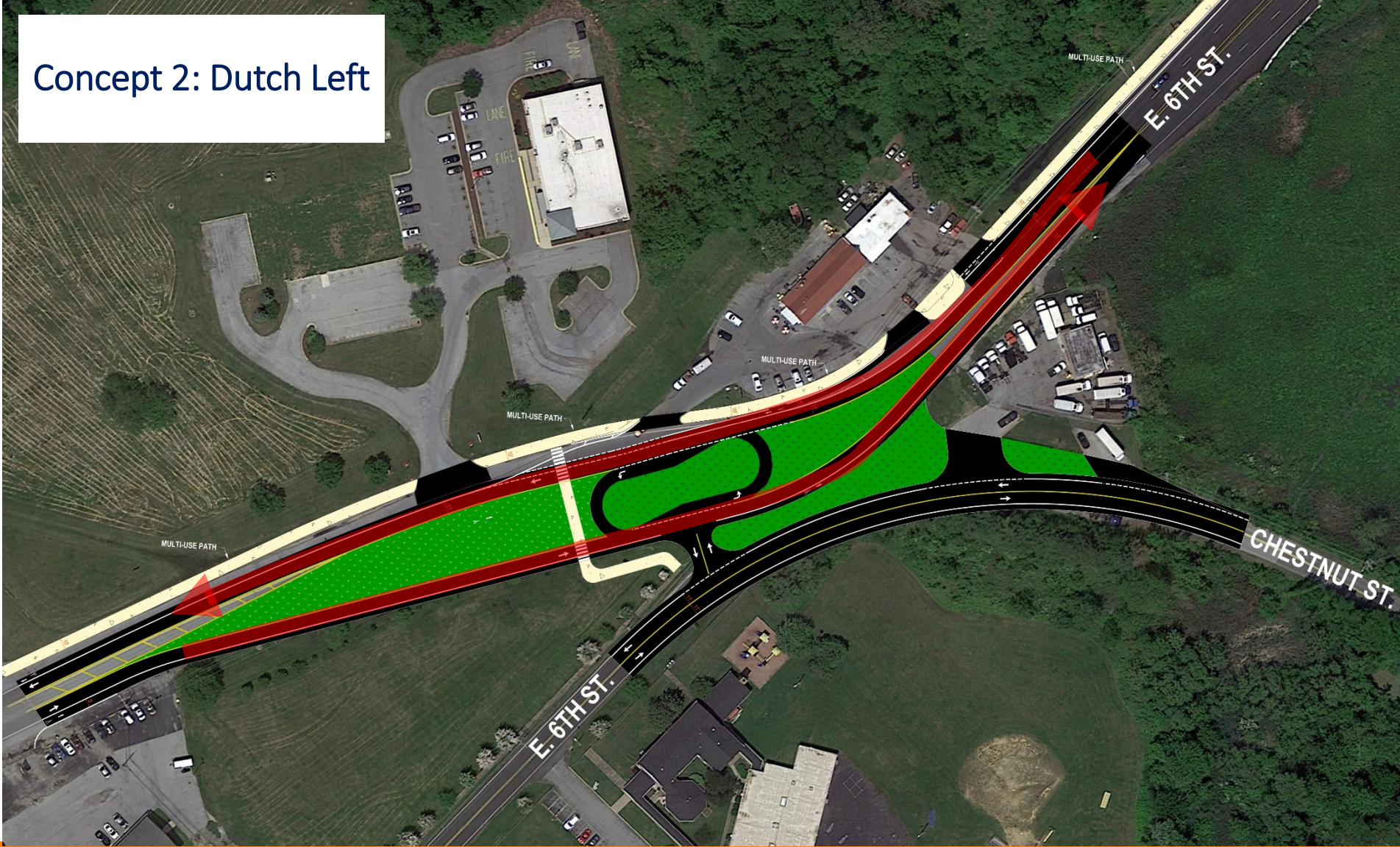
Ferry Cut Off Street / E 6th Street / Chestnut Street Intersection Concept

Concept 2: Dutch Left



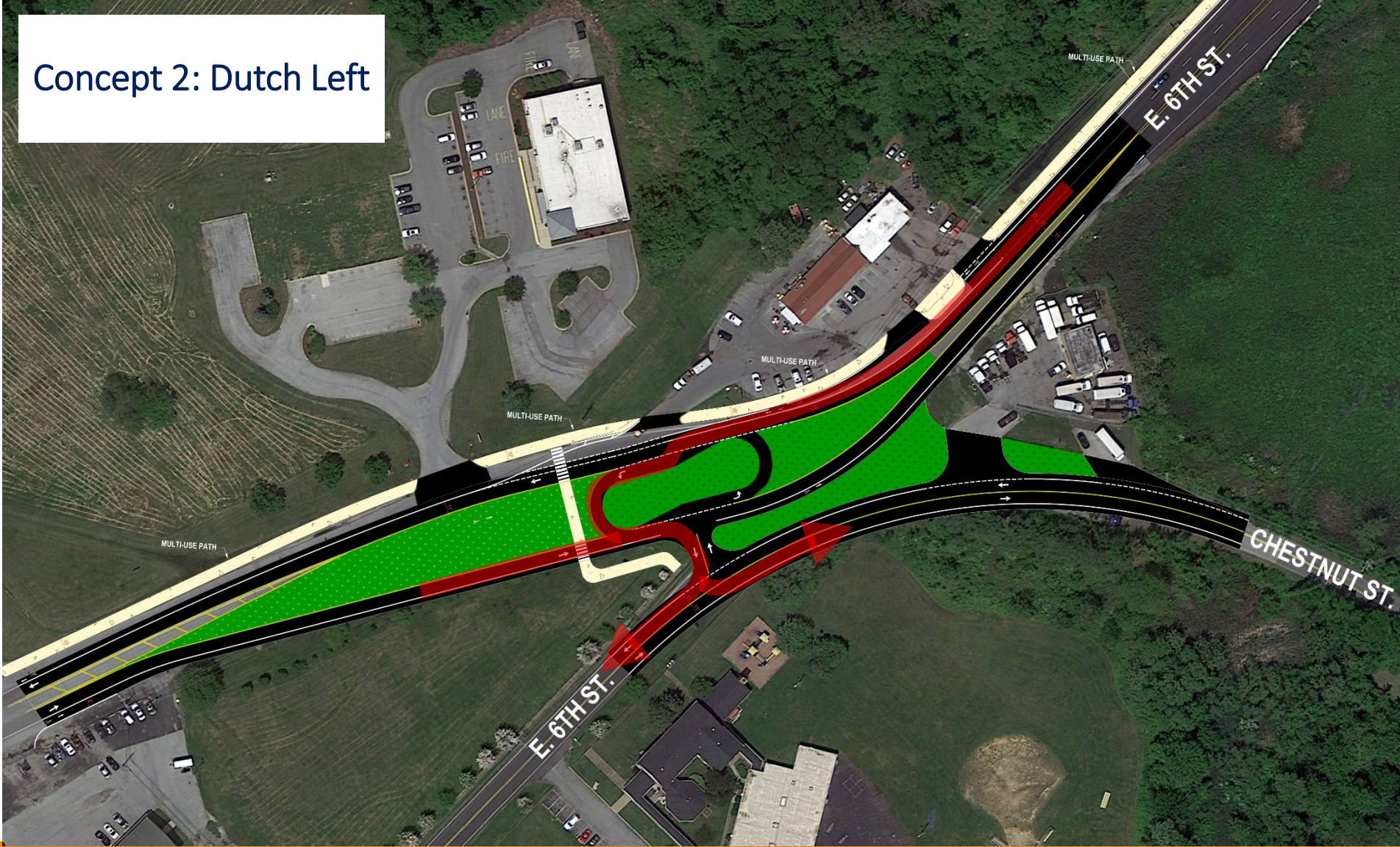
Ferry Cut Off Street / E 6th Street / Chestnut Street Intersection Concept

Concept 2: Dutch Left



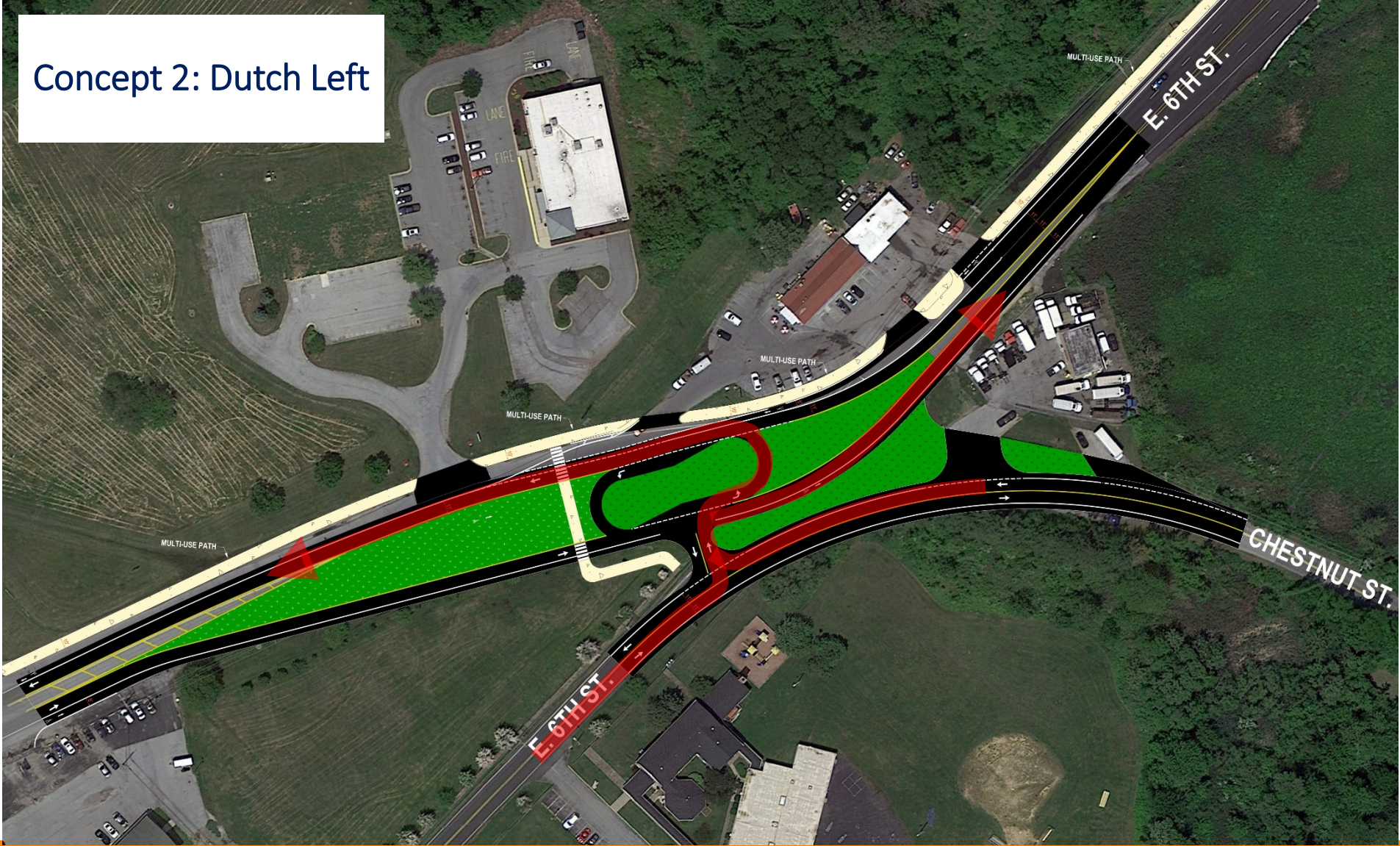
Ferry Cut Off Street / E 6th Street / Chestnut Street Intersection Concept

Concept 2: Dutch Left

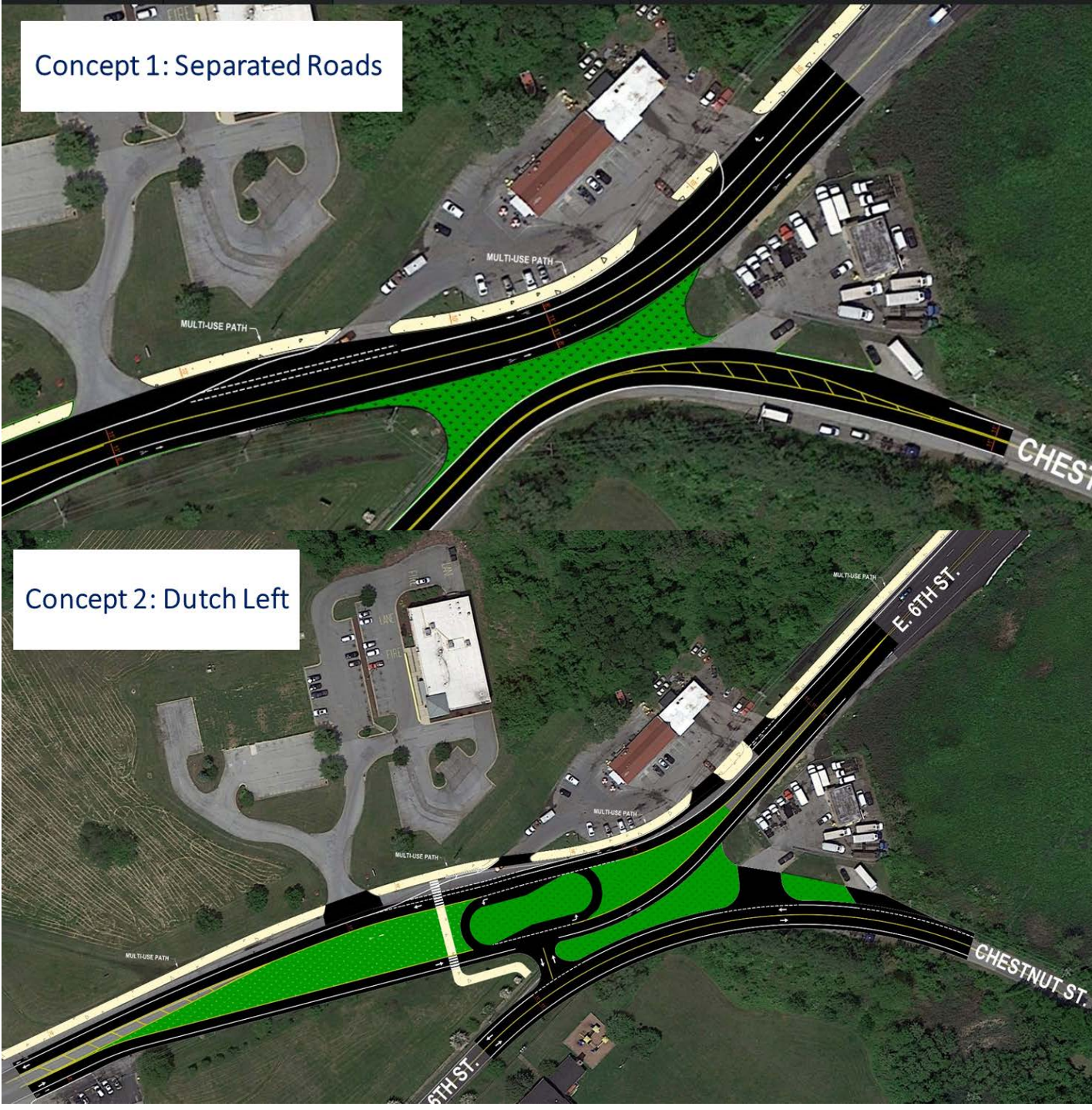


Ferry Cut Off Street / E 6th Street / Chestnut Street Intersection Concept

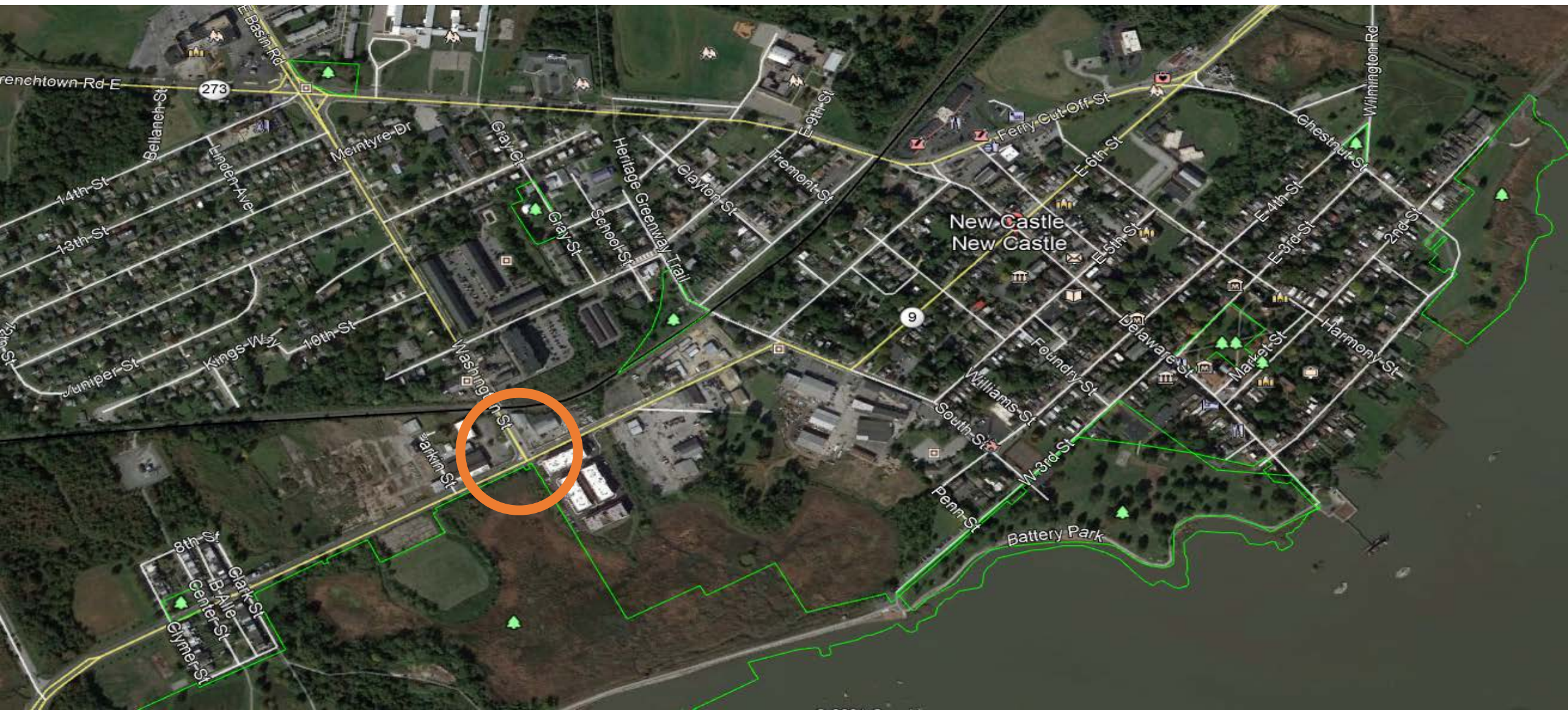
Concept 2: Dutch Left



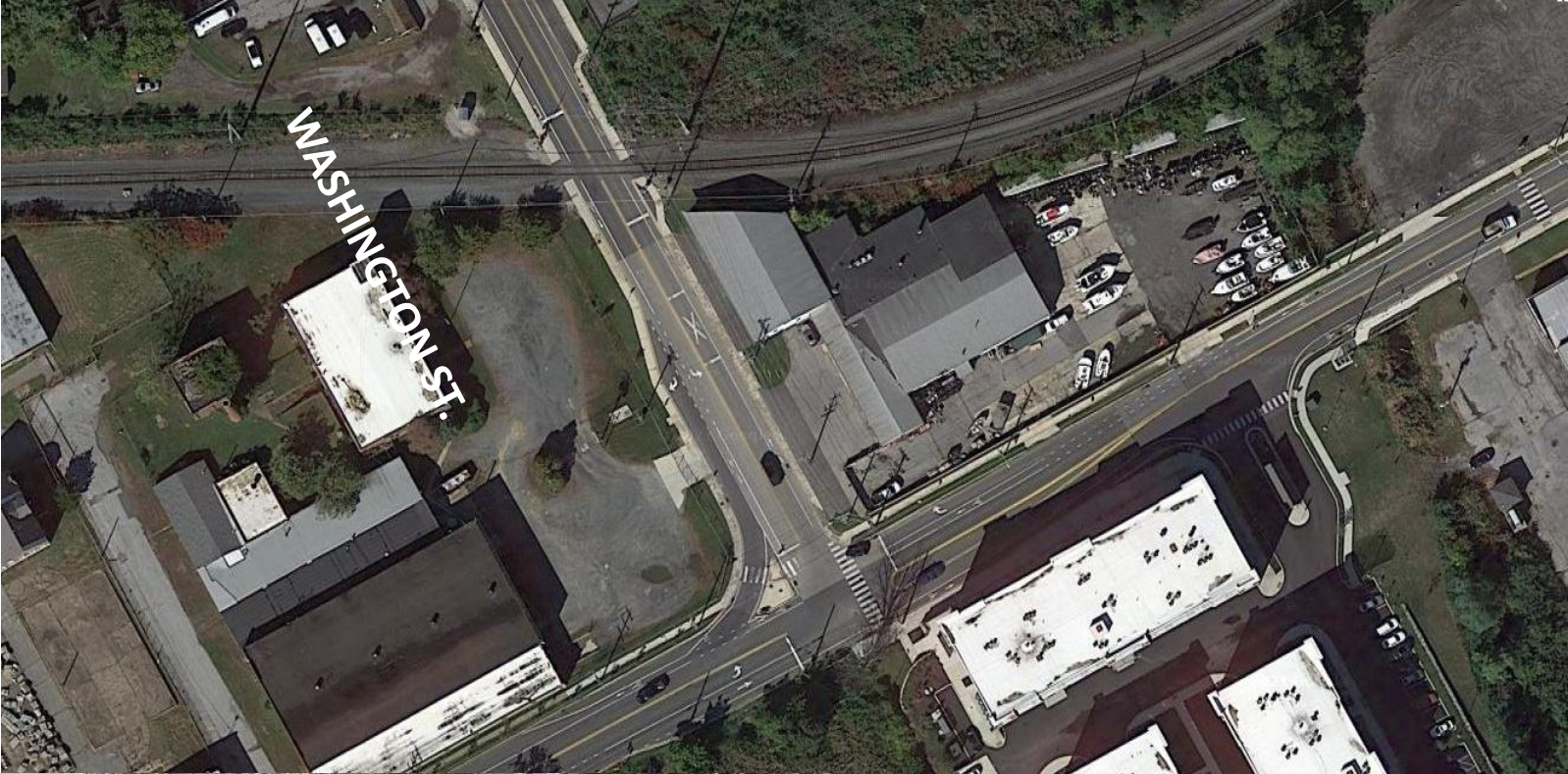
Concept	Percent Support
Concept 1	25%
Concept 2	54%
Both	14%
Neither	4%
Unsure	4%



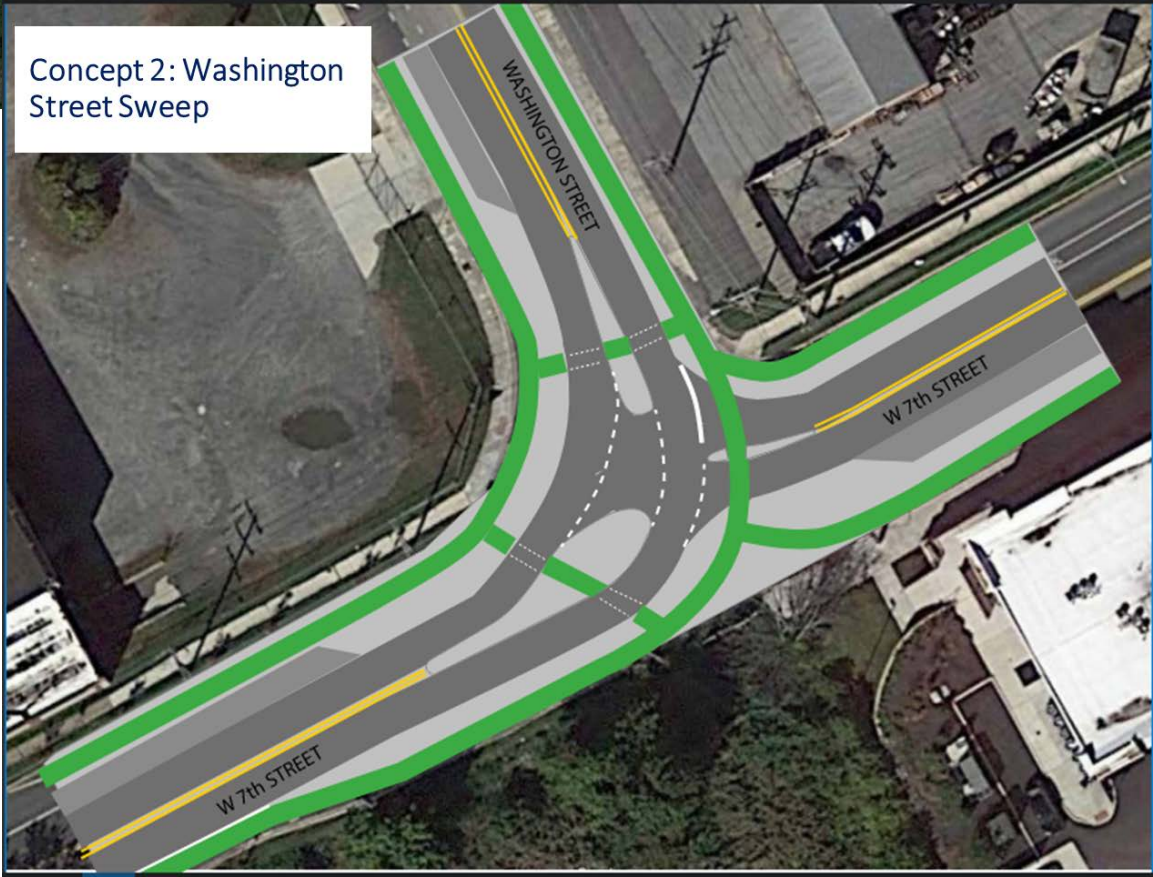
W 7th Street / Washington Street Intersection



Existing W 7th Street /
Washington Street
Intersection

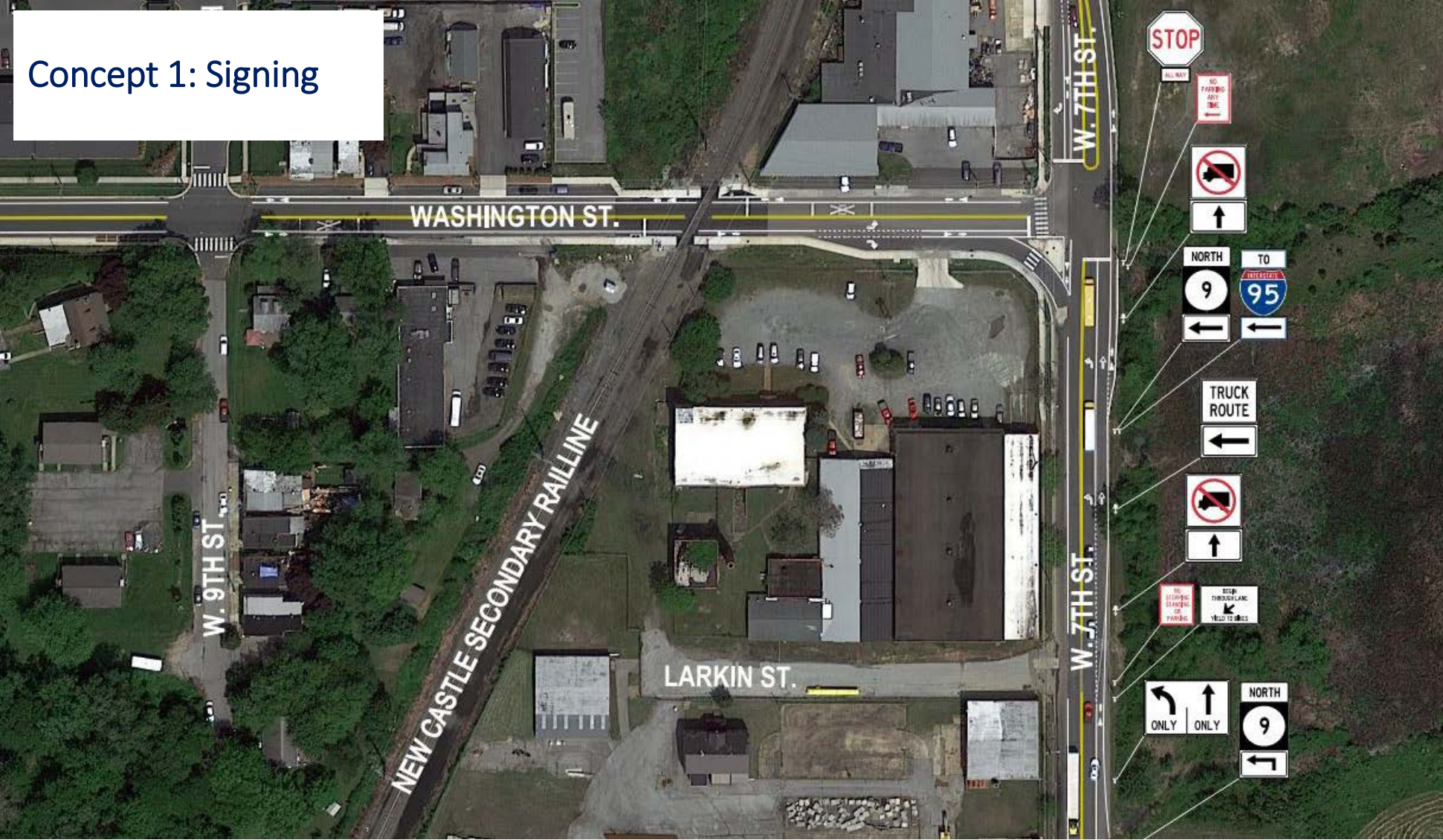


Concept	Percent Support
Concept 1	14%
Concept 2	46%
Both	29%
Neither	4%
Unsure	7%



W 7th St / Washington St Intersection

Concept 1: Signing

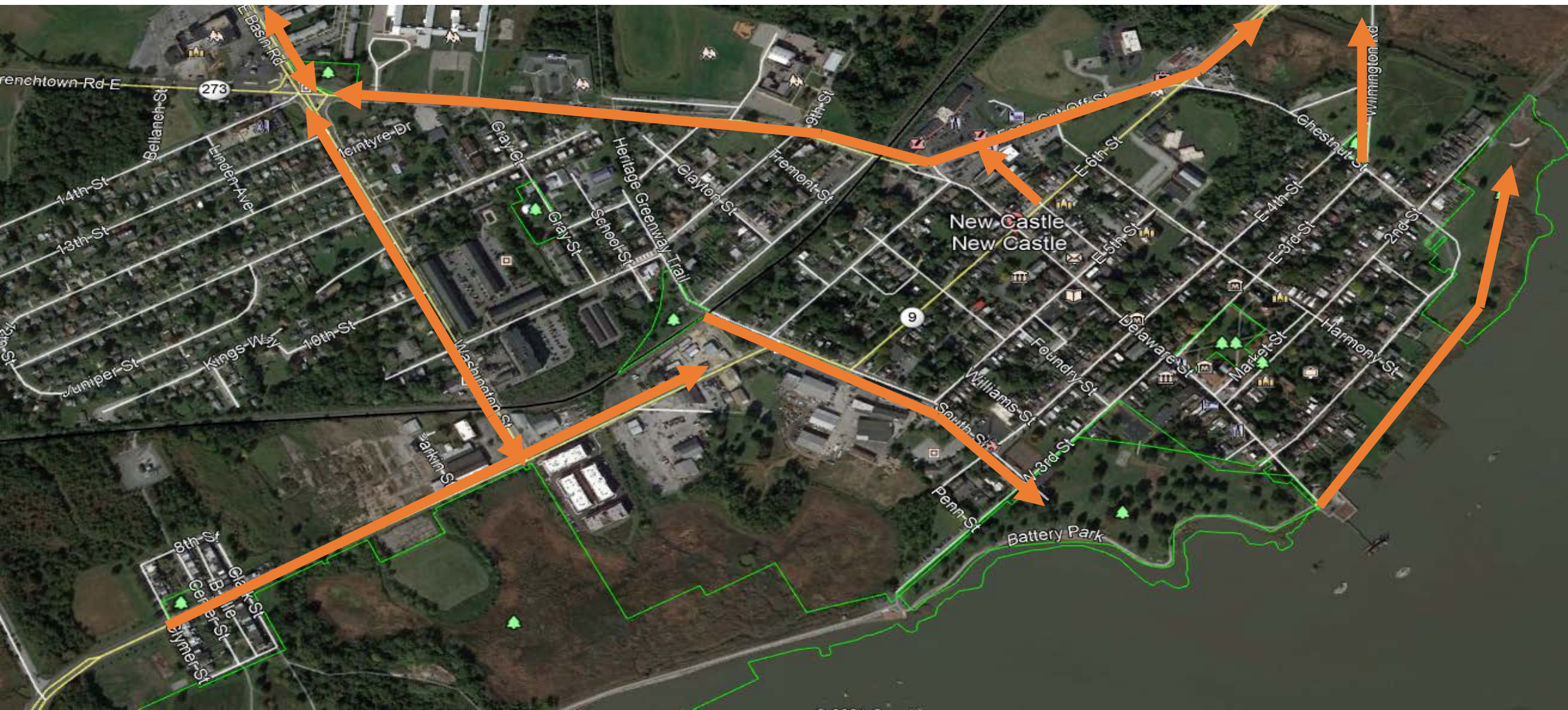


W 7th St / Washington St Intersection Concept 2

Concept 2: Washington
Street Sweep






Bicycle & Pedestrian Improvements

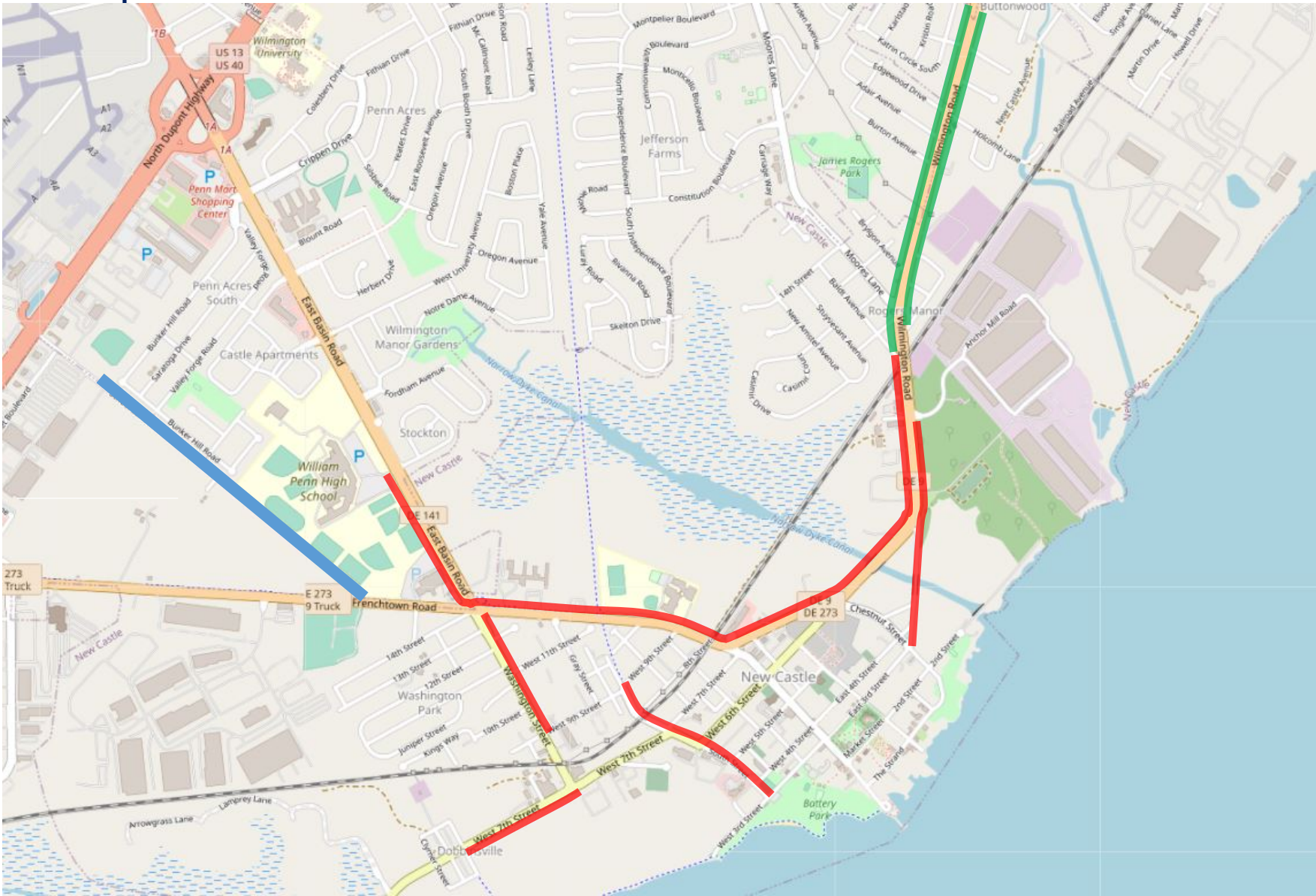


Multimodal Composite Concept

Legend

- Enhanced 10' Multi Use Path 
- Sidewalk Improvements (Filling in the Gaps) 
- School Lane Path Project 

93% support



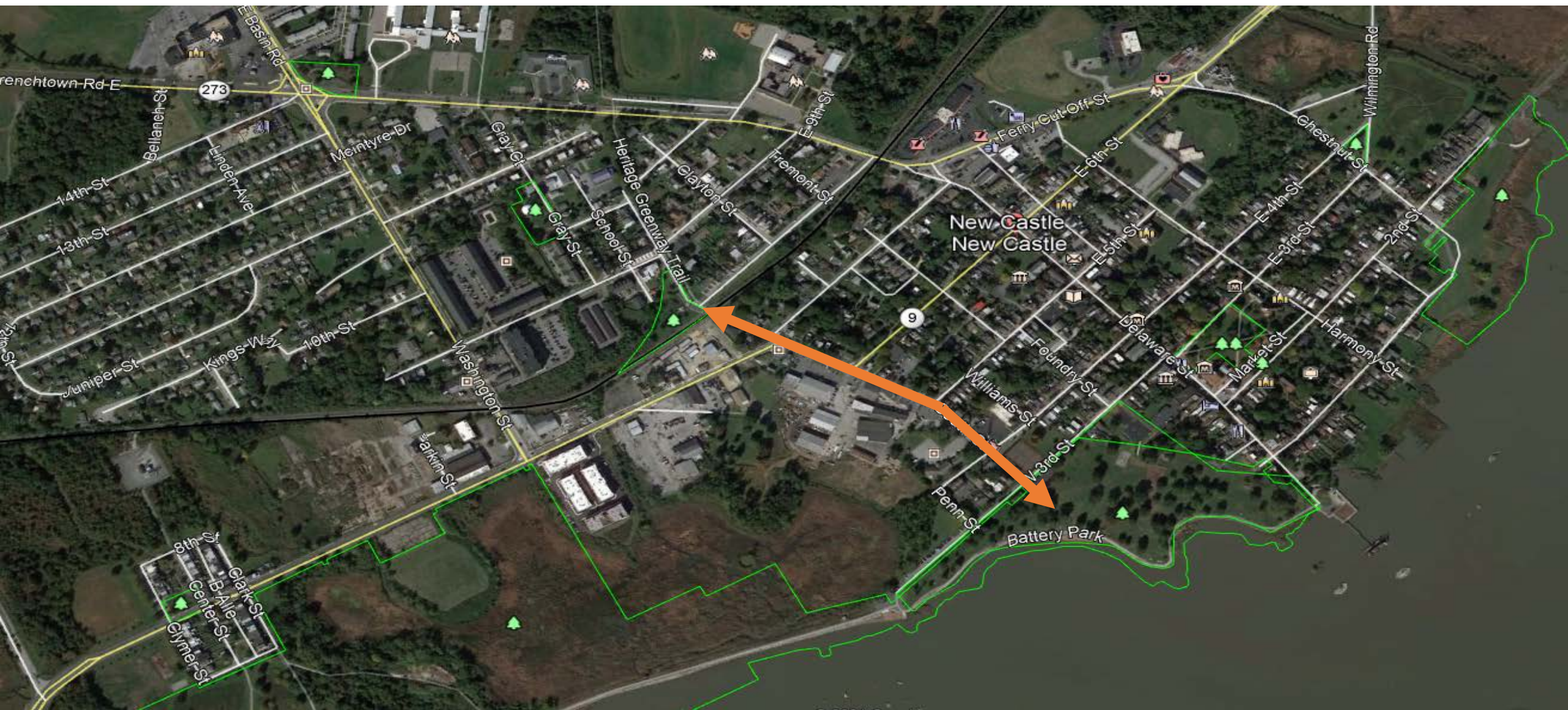
Washington Street Concept



Dobbinsville Multi Use Path Connector Concept



South Street



Existing South Street



Battery Park Concepts



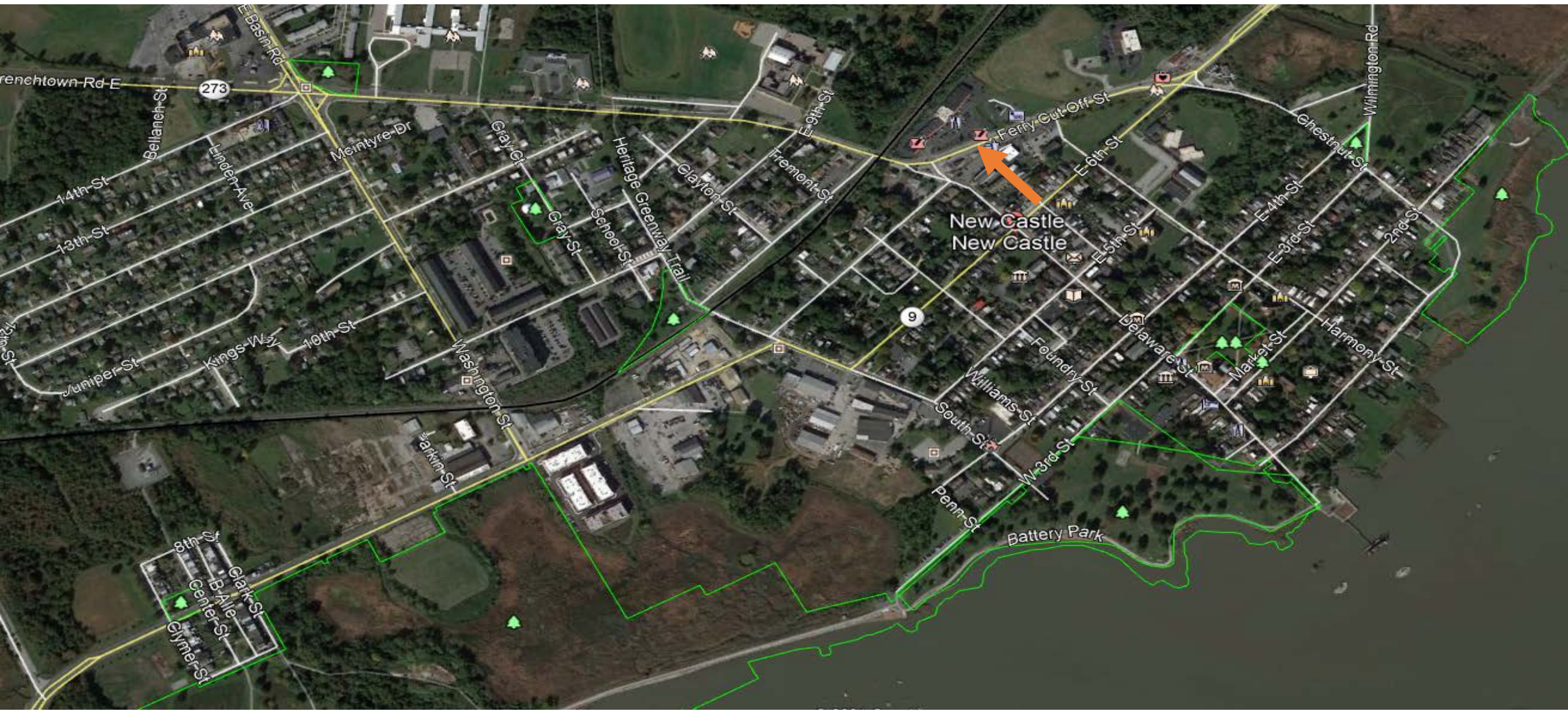
South Street Proposed Concept



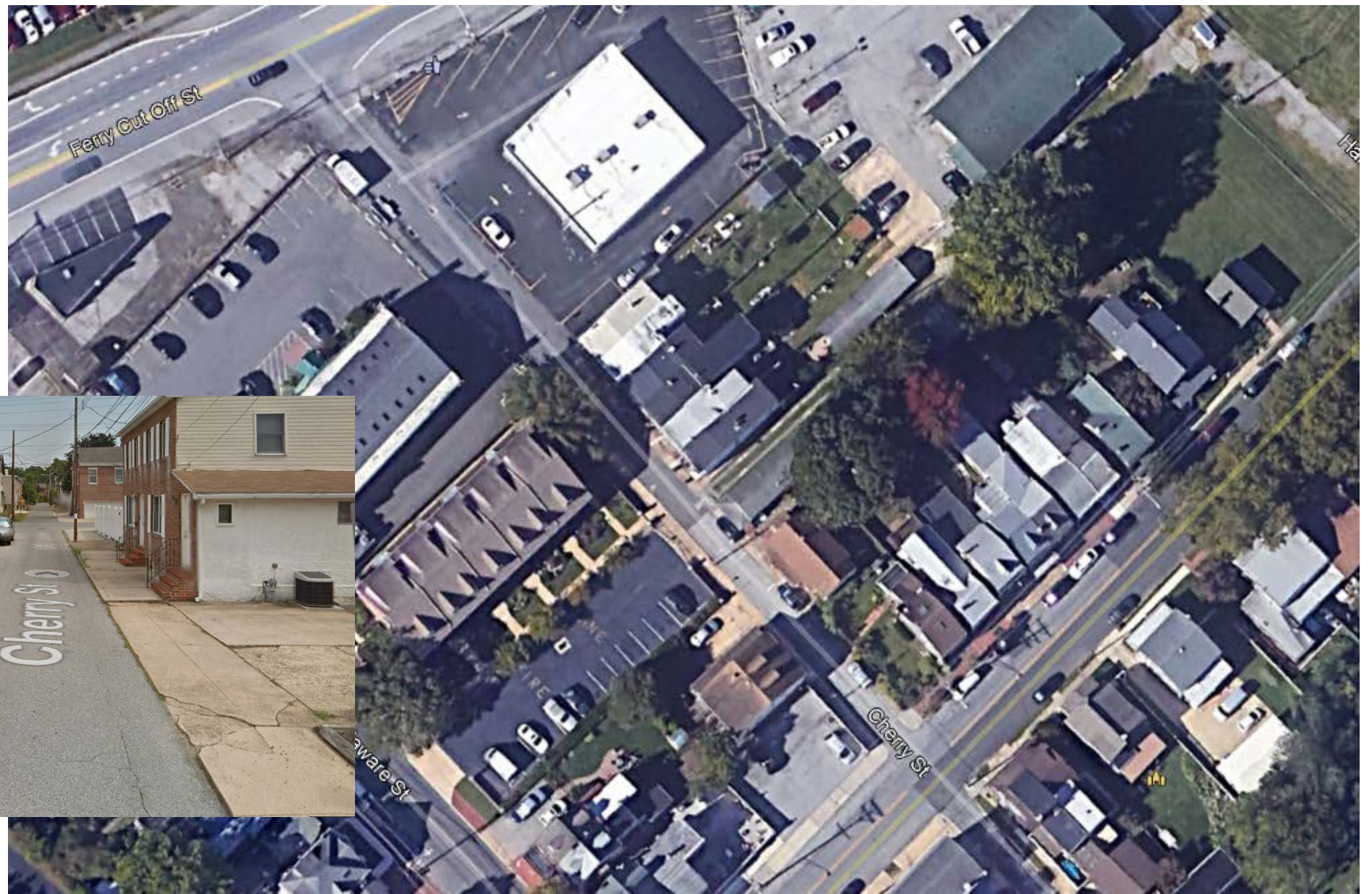
South Street Proposed Concept



Cherry Street



Existing Cherry Street



Cherry Street Concept



CHESNUT ST. PARKING LOT

GATEWAY
FEATURE

Concept	Percent Support
Yes	39%
No	39%
Unsure	22%

PEDS & EMERGENCY
VEHICLES ONLY

PROPOSED PARKING
68 SPACES

LEGEND

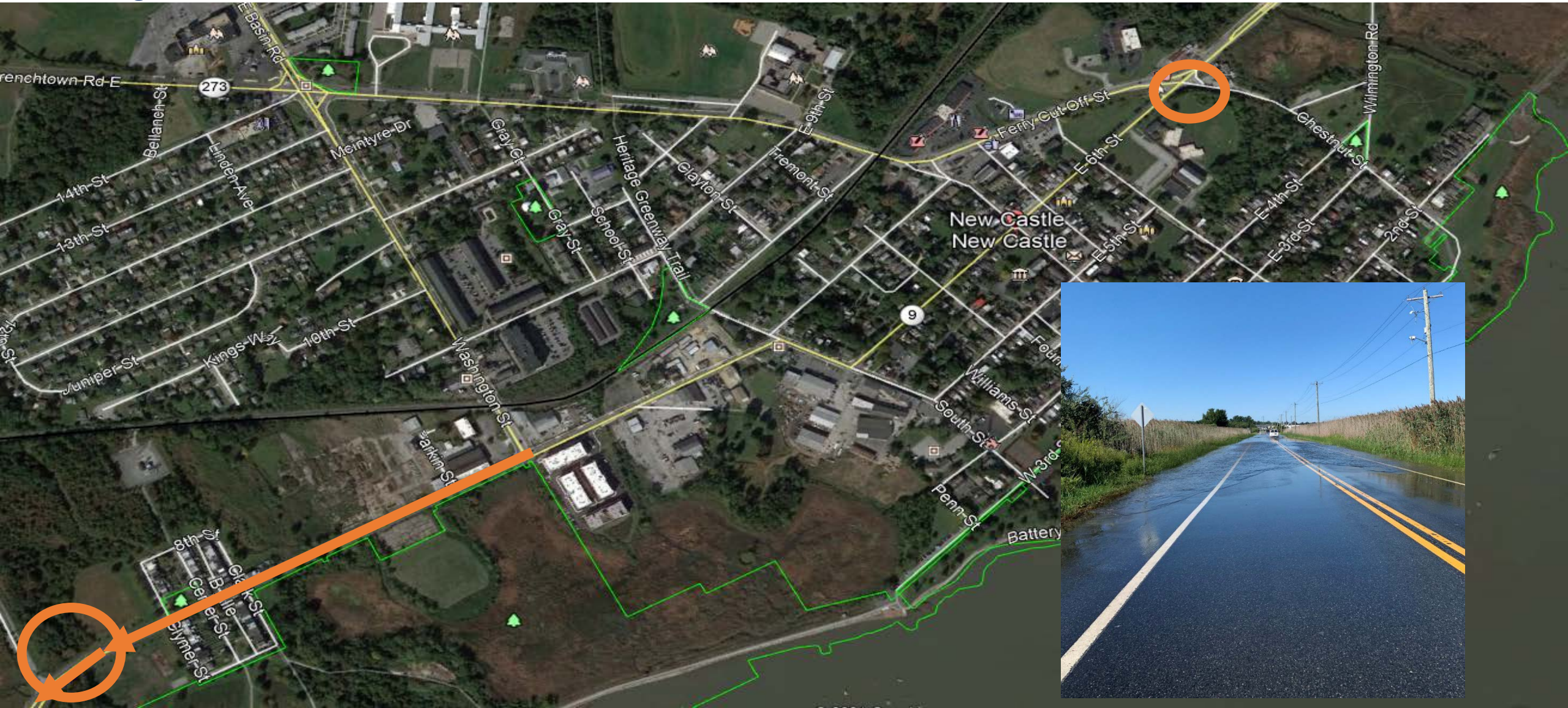
- NEW PAVEMENT
- NEW SIDEWALK
- GRASS
- DIRECTION OF TRAFFIC FLOW



Scale: 1" = 40'

September 2021

Flooding



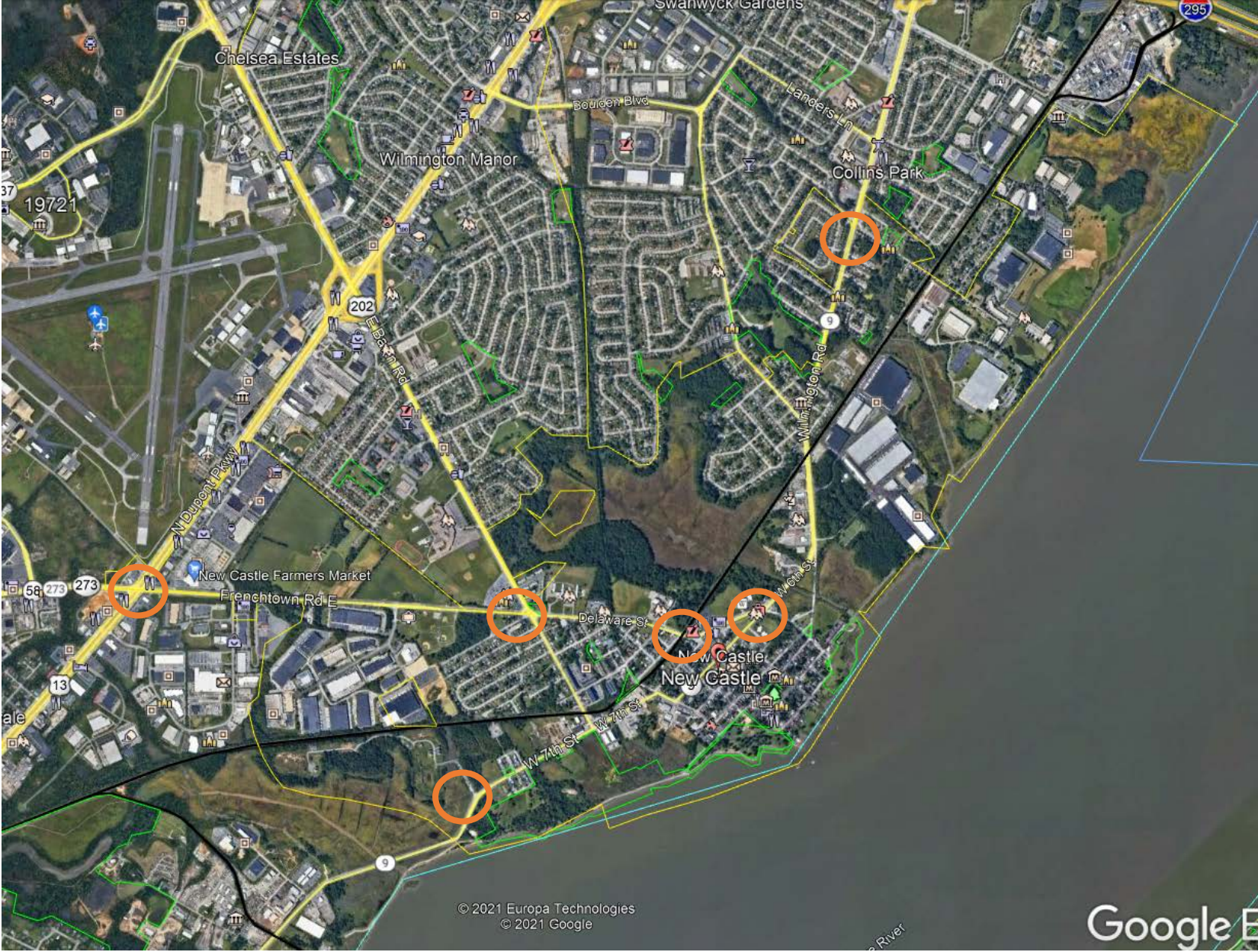
Flooding



SR 9, River Road Area Improvements, Flood Remediation

- Preliminary Engineering FY 2023/24
- Right of Way FY 2024/25
- Construction FY 2028

Gateway Locations



	Traffic Congestion	Cut-Through Traffic	Truck Traffic	Traffic Calming	Bike/Ped	Parking	Flooding	Gateway
Speed Reductions	○	○	○	●	○			
US 13/SR 273	●	○	○		○			○
SR 273/SR 141	●	○		○	○			○
Ferry Cut Off St/DE St	●	●	○	○	○	○		○
Ferry Cut Off St/Chestnut St	●	●	●	●	○		○	○
W 7 th St/Washington Ave	○	●	●	○			○	

- Primary Purpose
- Secondary Purpose

	Traffic Congestion	Cut-Through Traffic	Truck Traffic	Traffic Calming	Bike/Ped	Parking	Flooding	Gateway
Basin/Delaware/Ferry Cut Off/Wilmington Multimodal				○	●			○
Washington Street Multimodal					●			
South Street				○	●			
Cherry Street				○	●	●		
Chestnut Street Lot	○			○	○	●		○
Dobbinsville Multi Use Path				○	●			

● Primary Purpose

○ Secondary Purpose

Completed Existing Data Collection

Fall 2020

Visioning Workshop

February 10, 2021

Alternatives Development

Spring 2021

Public Workshop #2

Summer 2021

Refine Alternatives/Draft Report

Fall 2021

Public Workshop #3

Late Fall 2021

Final Report

Winter 2021

- October 26 Advisory Committee
- November 9 City Council Workshop



City of New Castle Transportation Plan **SHARE YOUR IDEAS**

CITY COUNCIL WORKSHOP will seek your feedback about potential improvements for walking, bicycling, parking, driving, flooding, and freight.

NOVEMBER 9, 2021, 6 P.M.
NEW CASTLE SENIOR CENTER
400 SOUTH STREET
NEW CASTLE, DE 19720

Presented by WILMAPCO, the City of New Castle, and DelDOT

Learn more at www.wilmapco.org/cityofnewcastle
Contact us online or at 302-737-6205 ext 118 with any questions

Completed Existing Data Collection

Fall 2020

Visioning Workshop

February 10, 2021

Alternatives Development

Spring 2021

Public Workshop #2

Summer 2021

Refine Alternatives/Draft Report

Fall 2021

Public Workshop #3

Late Fall 2021

Final Report

Winter 2021

Next Steps

- Comments through September 30
- October 26 Advisory Committee
- November 9 City Council Workshop