



CITY OF NEW CASTLE TRANSPORTATION PLAN

HEATHER DUNIGAN
WILMAPCO

PAC
FEBRUARY 22, 2021



THE PURPOSES OF THIS PLAN ARE TO:

1

Improve multimodal network, provide connectivity to communities / trails, enhance health and livability, reduce illegal truck traffic, and improve safety

2

Address flooding and sea-level rise impacts on land use and access to major transportation corridors

3

Improve gateways to the historic city.

4

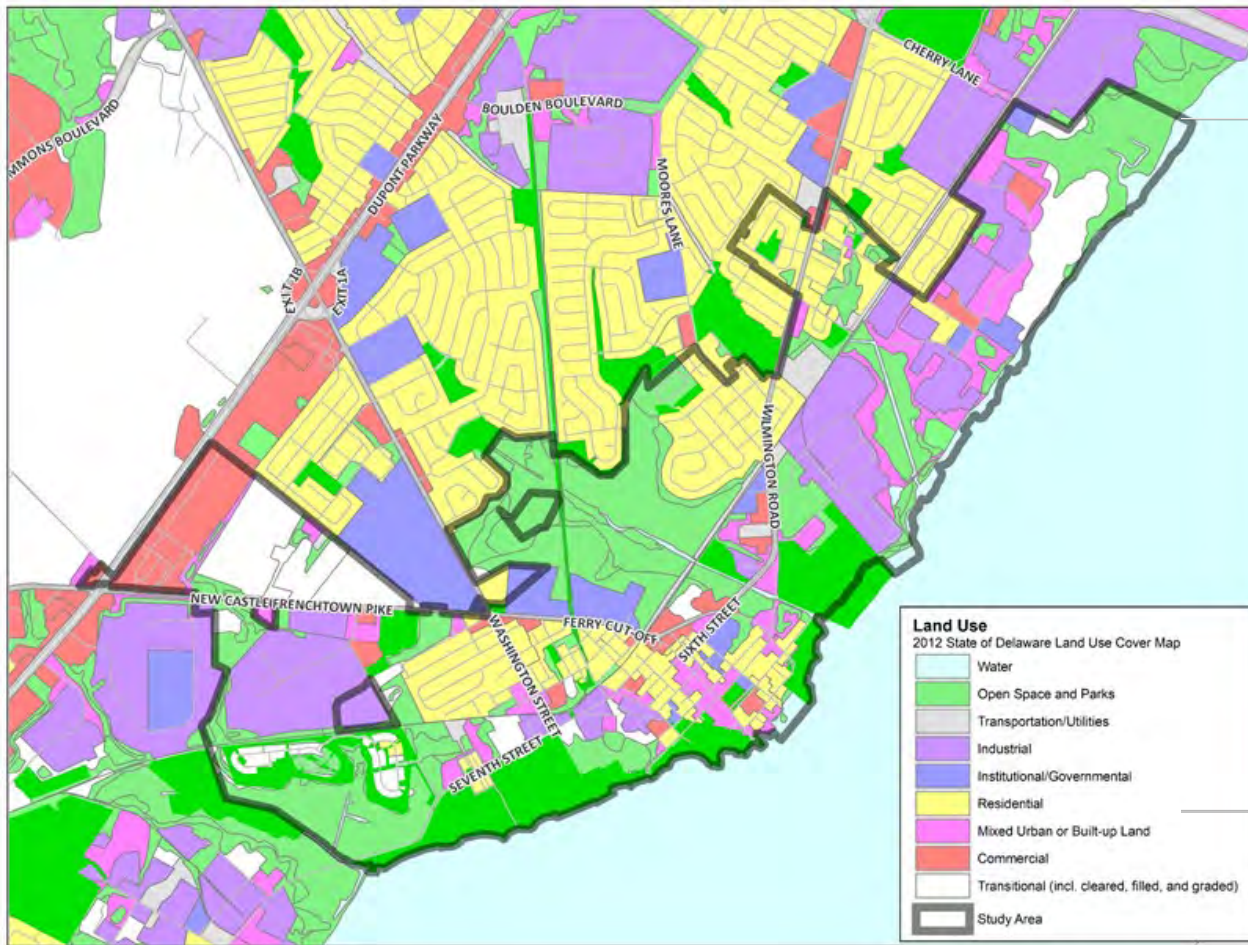
Develop a shared-parking analysis

TASK 1: EXISTING CONDITIONS ANALYSIS

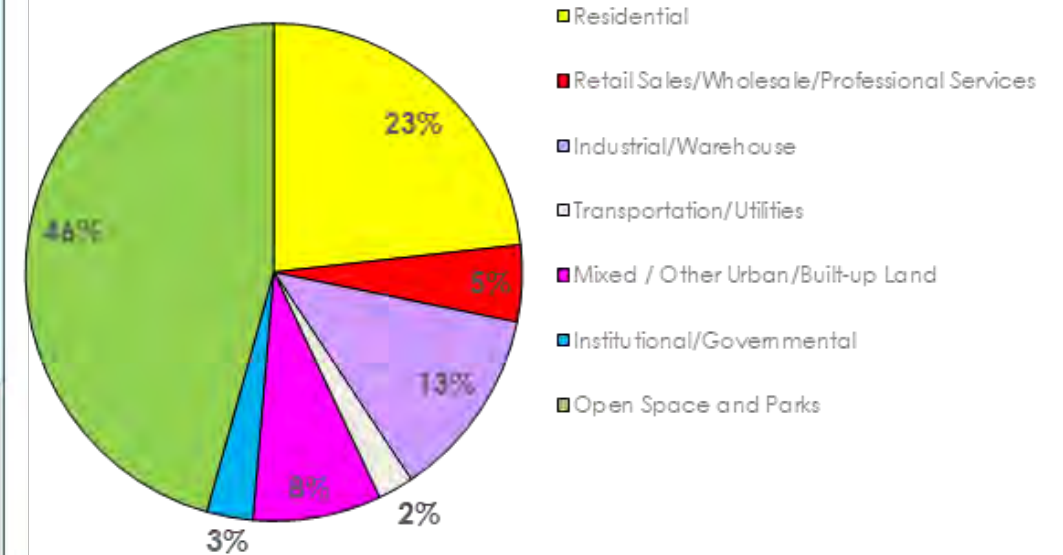
- Review of existing zoning and land use
- Potential land use and economic development
- Current and projected demographics
- Transportation
- Assets and constraints



EXISTING ZONING AND LAND USE

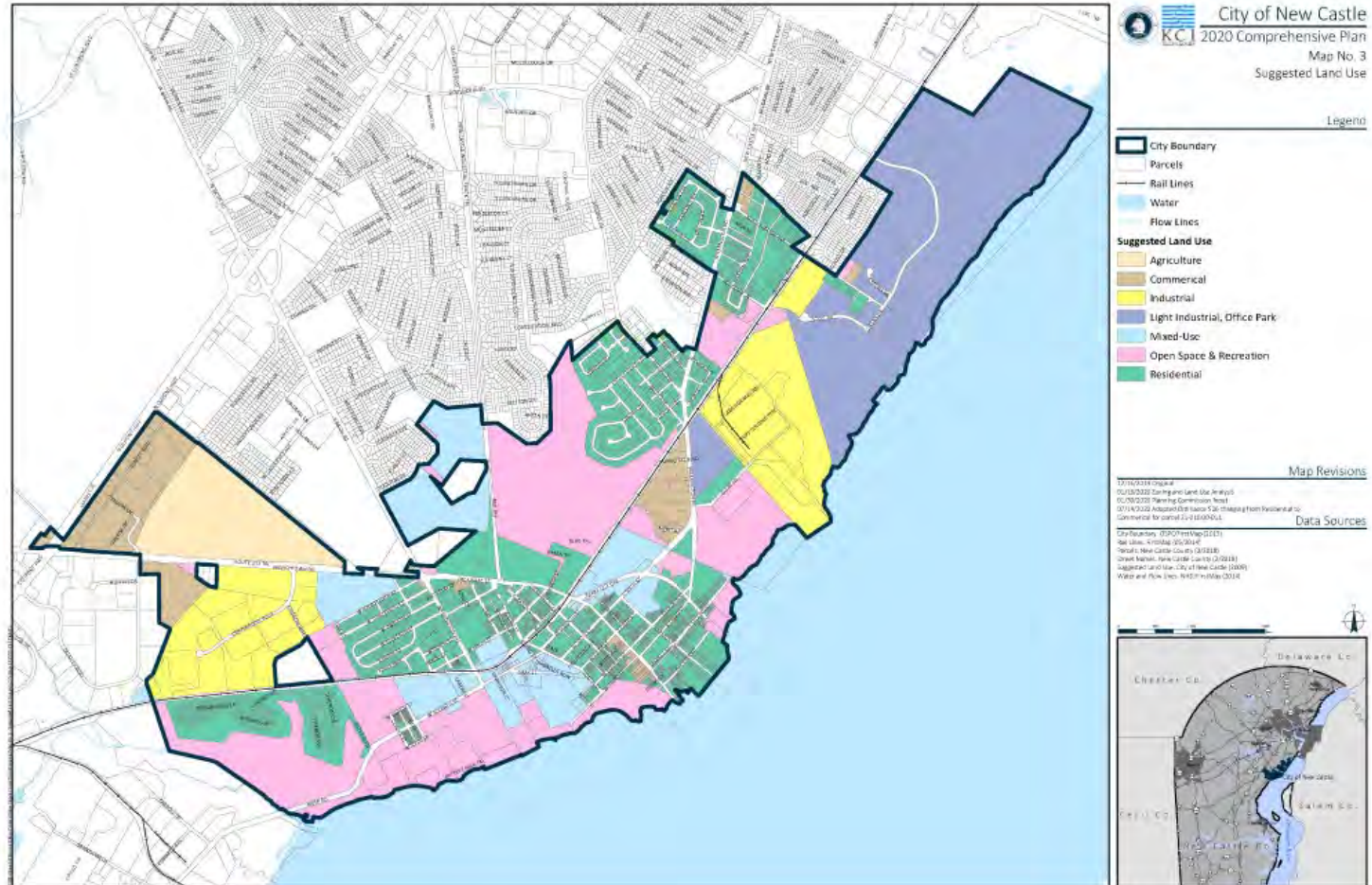


Existing Land Use, City of New Castle*

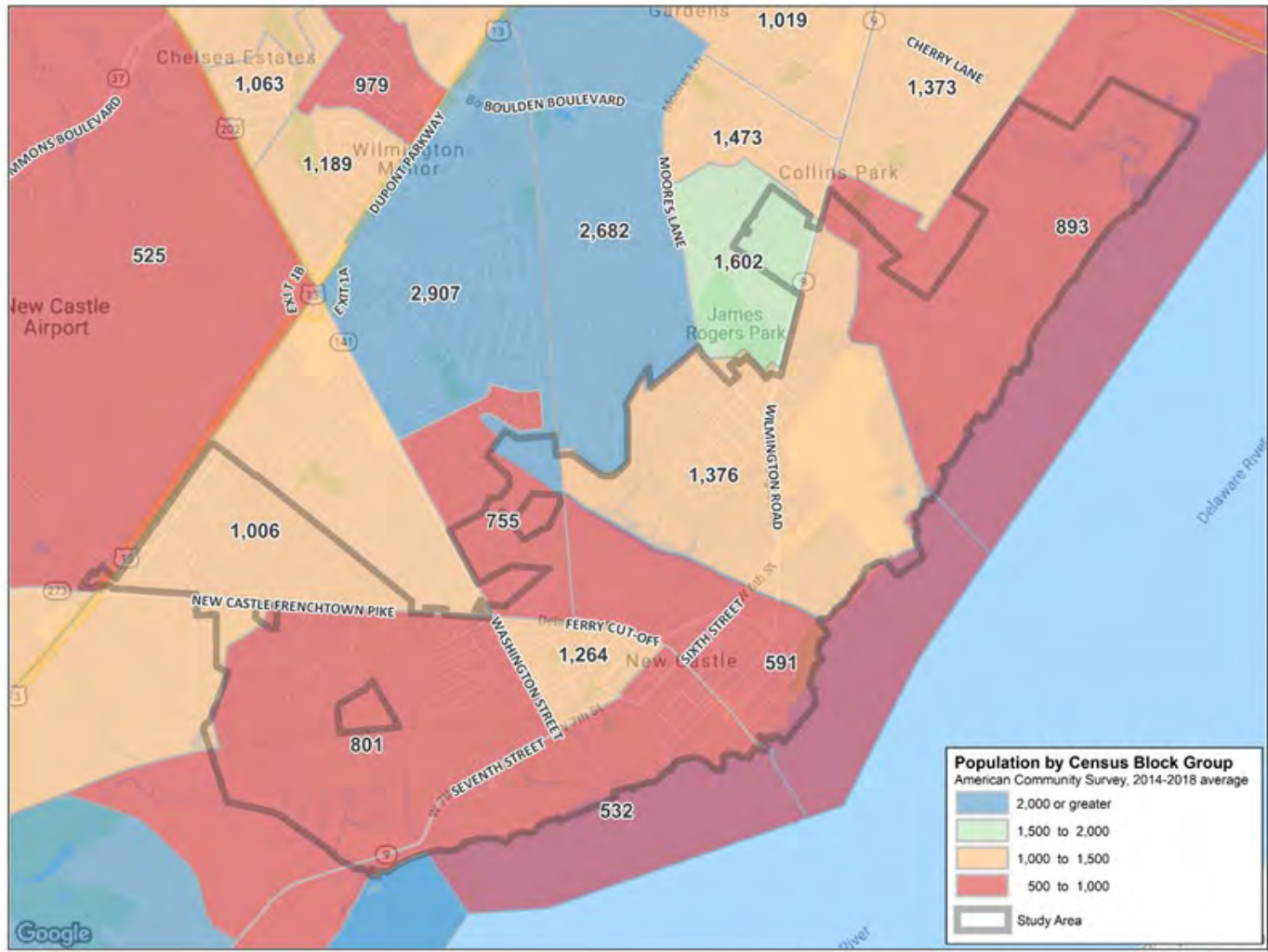


POTENTIAL LAND USE AND ECONOMIC DEVELOPMENT

2020 Comprehensive
Plan



DEMOGRAPHICS

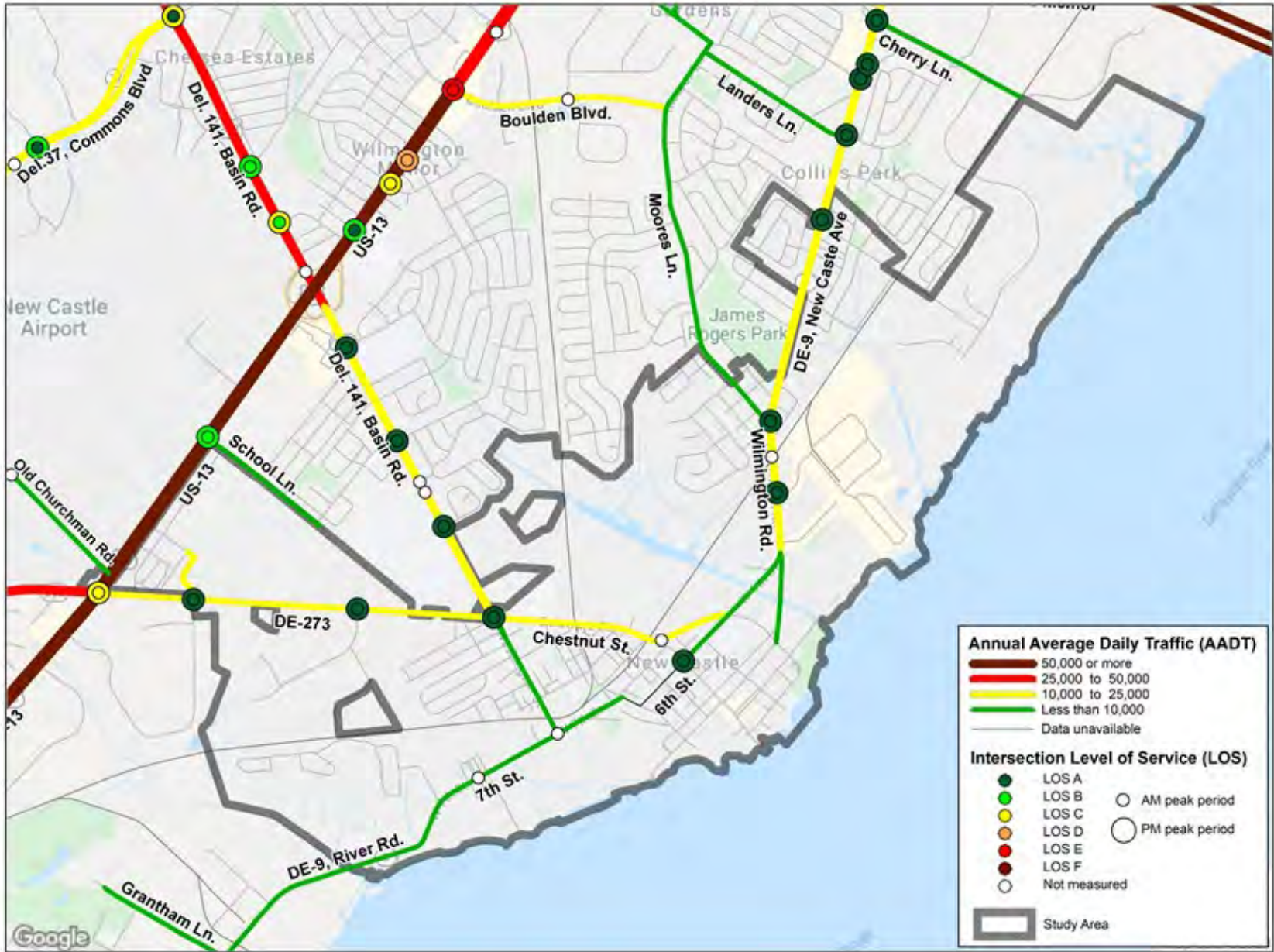


Demographic Makeup - ACS 2014-2018	
Population	
Total population	5,359
Total housing units	2,740
Race	
White alone	62.7%
Black or African American alone	24.8%
Hispanic or Latino (of any race)	8.5%
Asian alone	1.8%
American Indian and Alaska Native alone	0.4%
Two or more races	1.5%
Age	
19 years and younger	12.1%
20 to 59 years	60.7%
60 years and older	27.2%
Income	
Below 100 percent of the poverty level	4.1%
100 to 149 percent of the poverty level	5.7%
At or above 150 percent of the poverty level	90.2%

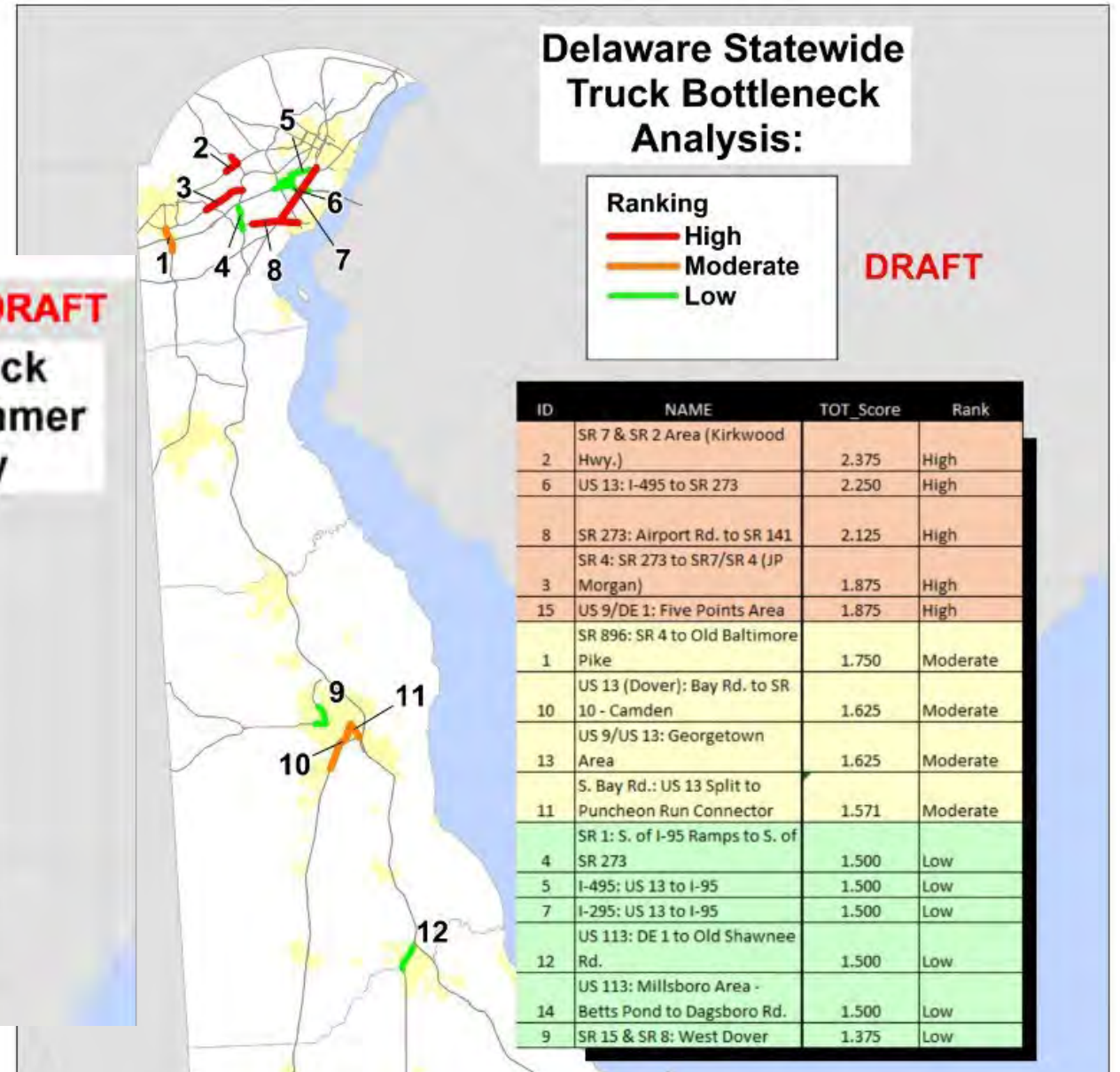
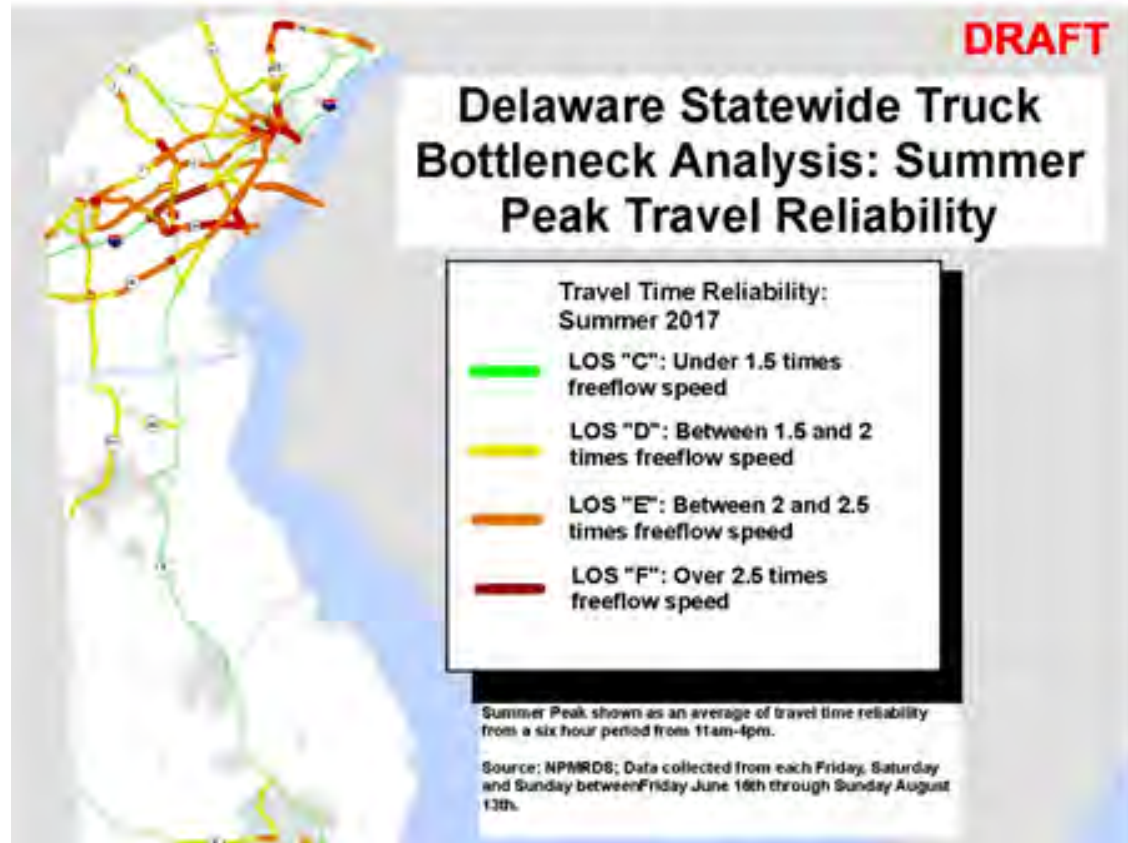
PUBLIC TRANSIT



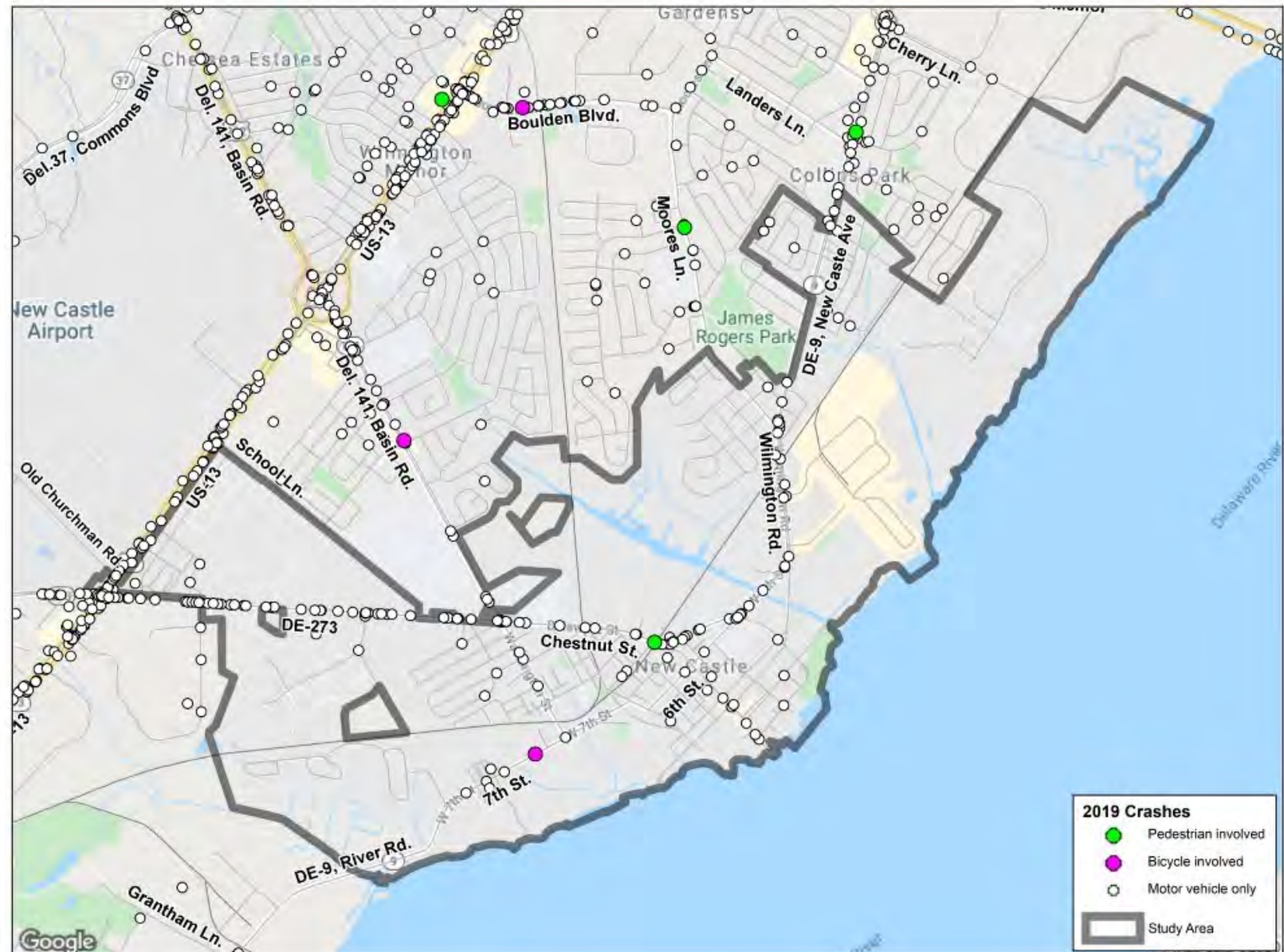
ROADS



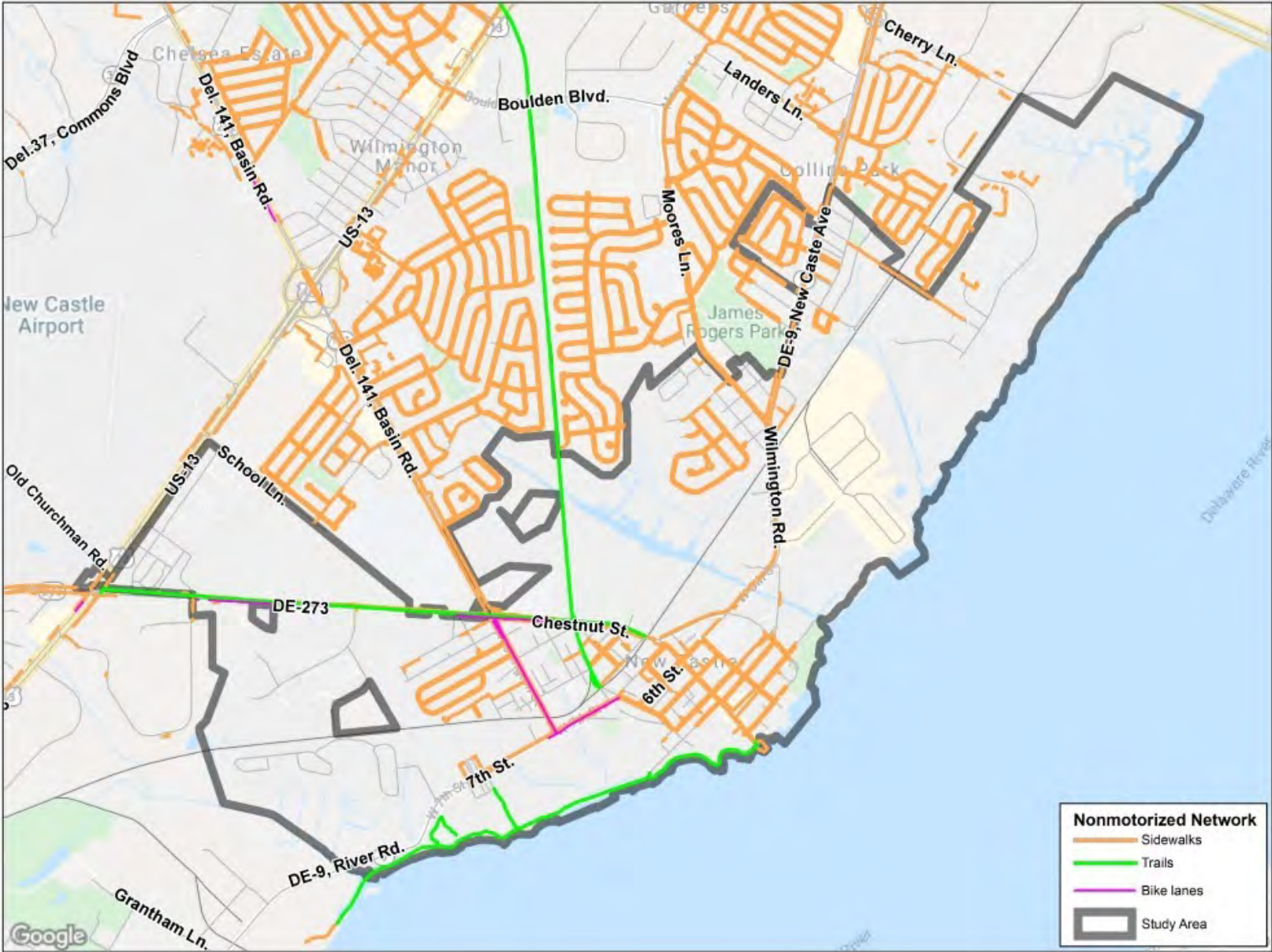
FREIGHT



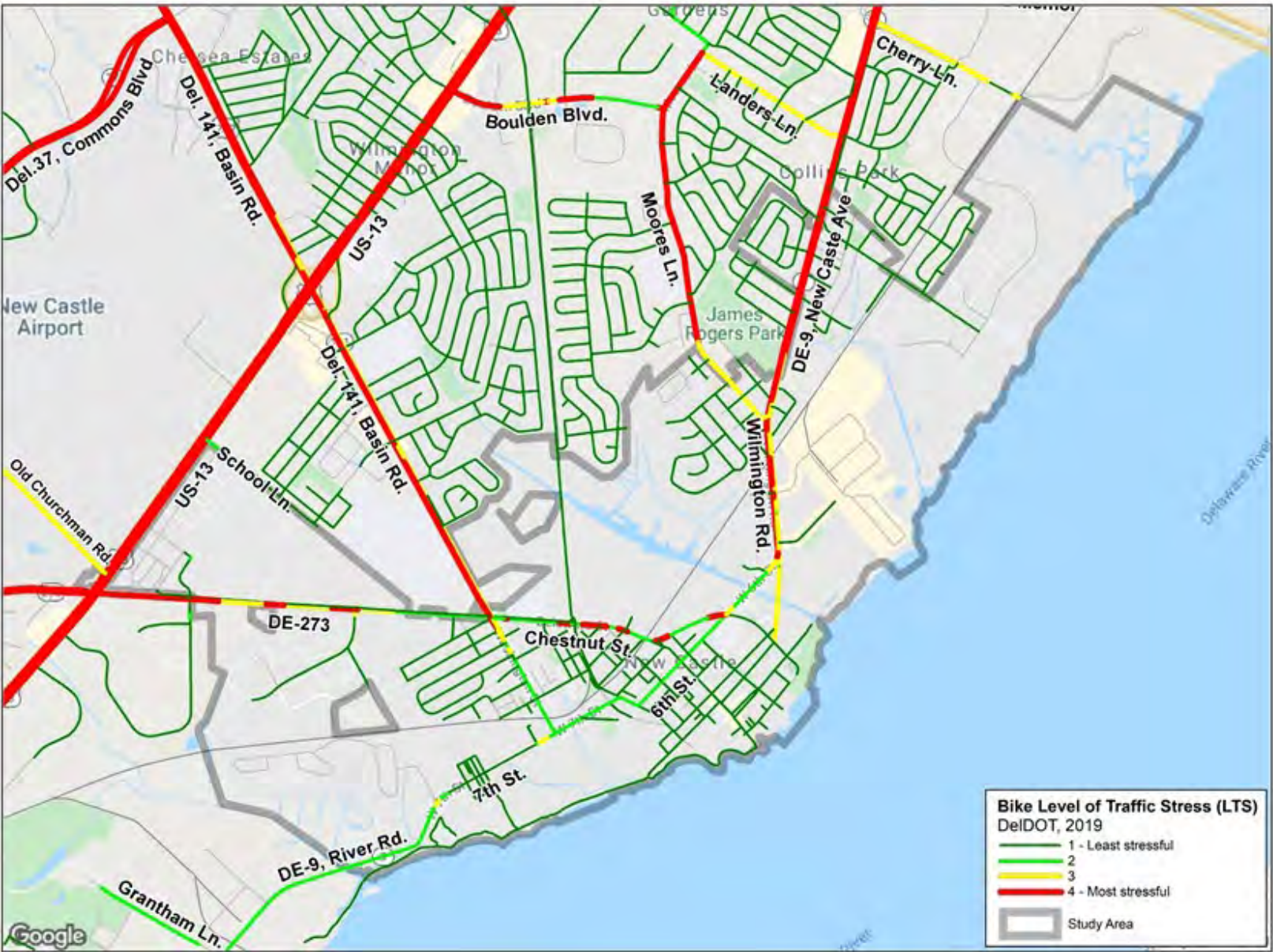
CRASHES



WALK / BICYCLE



WALK / BICYCLE

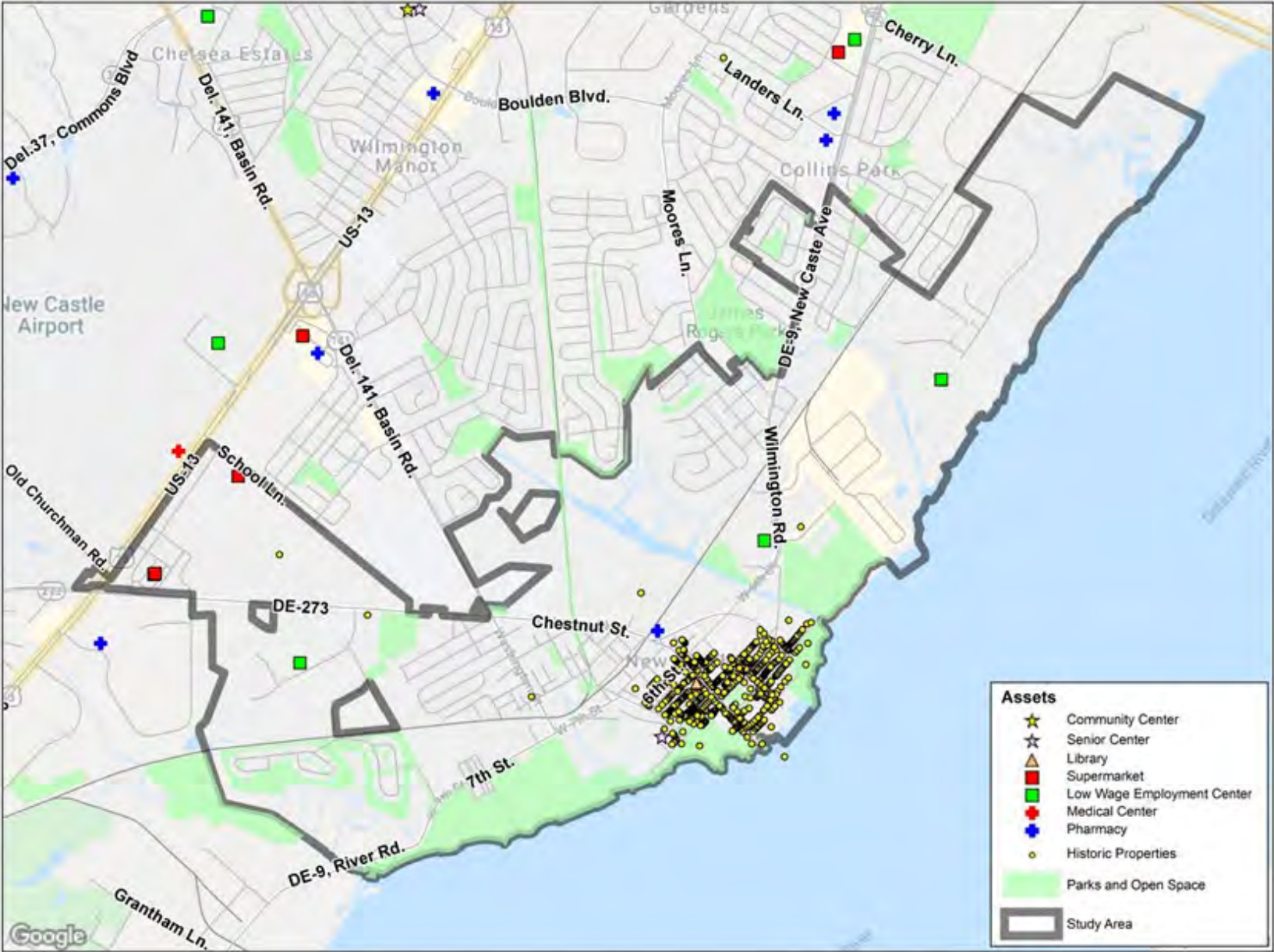


**Route 9 Corridor Master Plan
(Constrained and Aspiration Projects)**

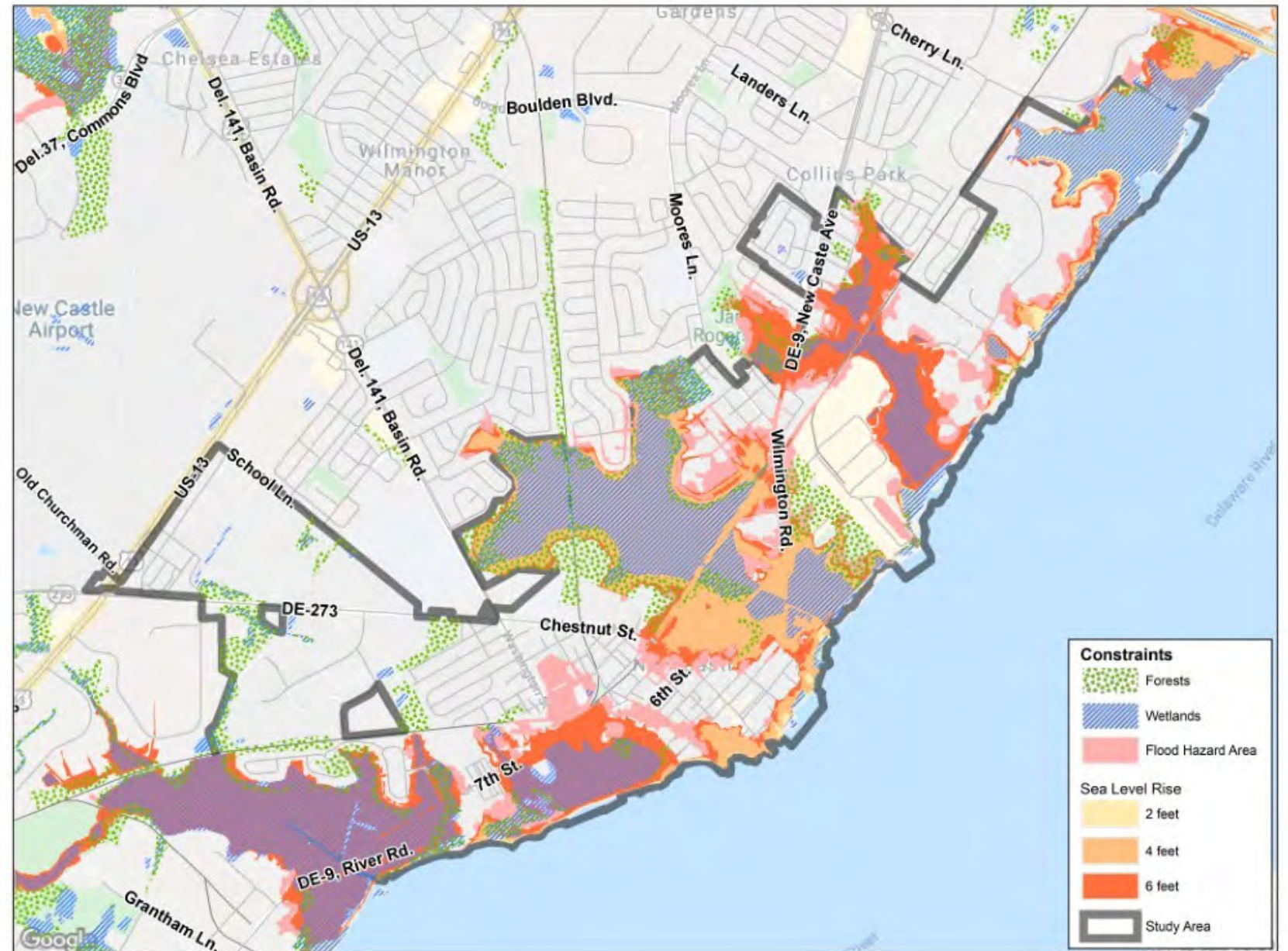
Planned Transportation
 RTP 2050 Projects
 — Constrained
 — Aspirations
 FY2020 TIP Projects
 ● Study Area

Map labels include: Commons Blvd Pathway, SR 141 & I-95: Commons Blvd, SR 141: I-95 - Jay Dr, Del. 141 - Basin Rd., US 13: US 40 - Memorial Dr Pedestrian Improvements, US 13, I-295 Improvements, Boulden Blvd, Landers Ln, SR9 Landers Ln to A St, SR9 Landers Ln to A St, Cherry Ln, SR9 Pavement Reconstruction, Wilmington Rd, SR9 River Rd. Area, 7th St, SR 9, River Road Flood Remediation, SR9 Reconstruction, City of New Castle Intersections, SR9 Railroad Crossing Safety Improvements, Chestnut St, DE-273, East Coast Greenway, School Ln, Del. 141 - Basin Rd., Old Churchman Rd, Grantham Ln.

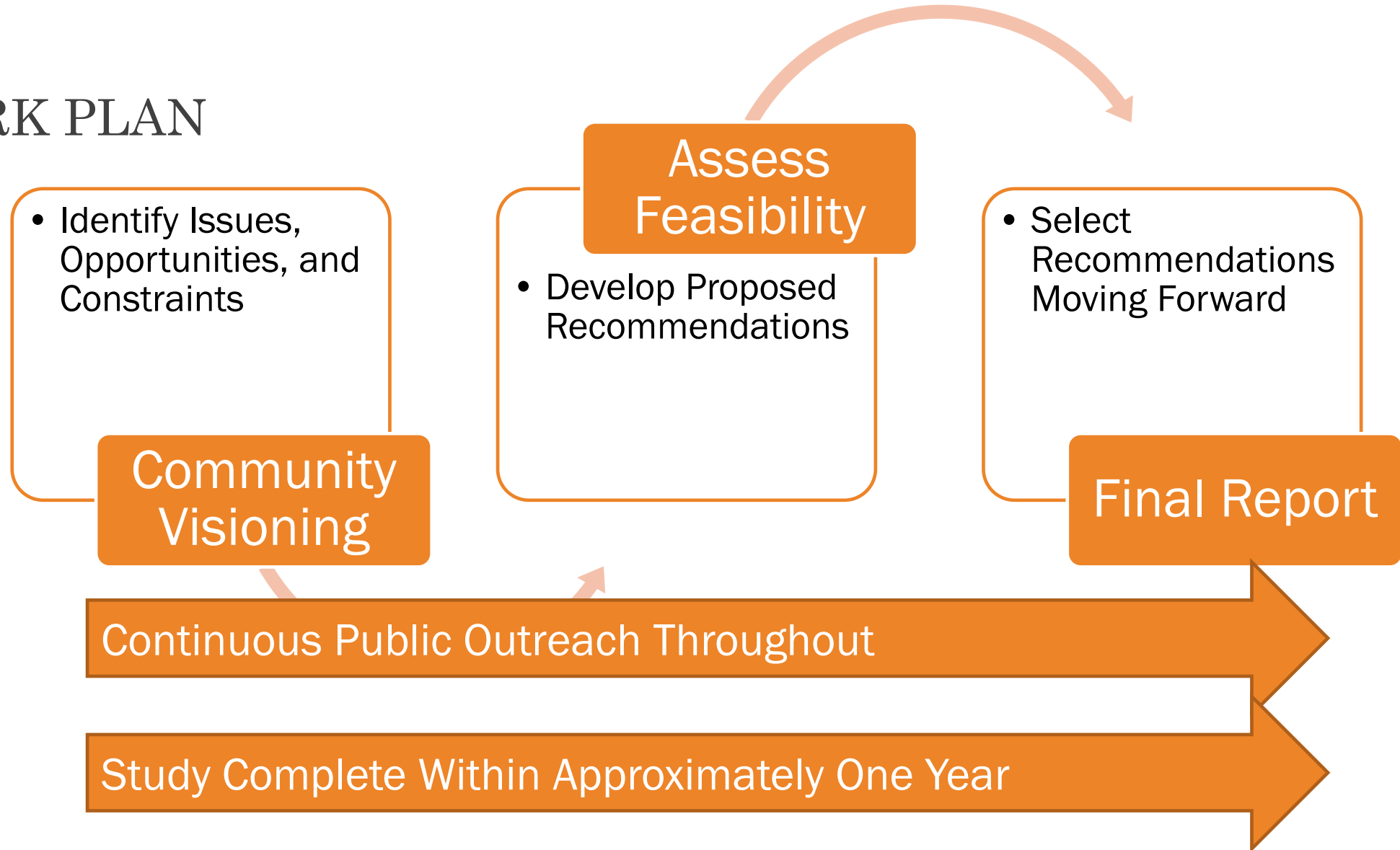
ASSETS



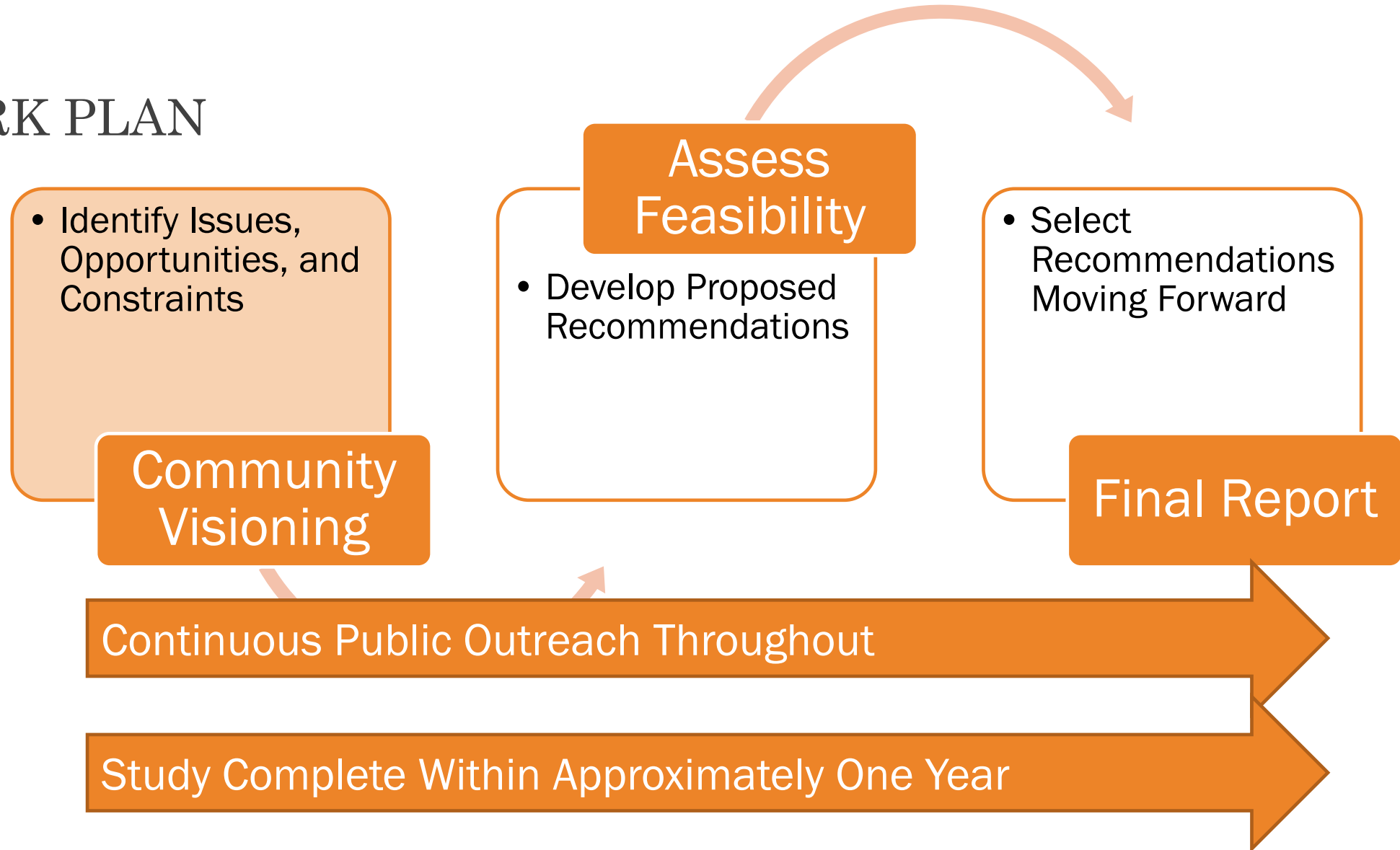
CONSTRAINTS



WORK PLAN



WORK PLAN



PUBLIC INVOLVEMENT

Planning Partners

- WILMAPCO
- City of New Castle
- DeIDOT / DART
- Assisted by Century Engineering

Advisory Committee

- Local organization reps
- Other state / county reps
- Gives ongoing input on outreach and recommendations

Public

- **Broad participation needed so plan reflects community priorities**

3 Public Workshops

1

Visioning Workshop



2

Alternatives Presentation



3

Alternatives Moving Forward

HOLISTIC APPROACH

- Destinations and Connectivity
- Walking and bicycling connections
- Truck Movements
- Traffic Movements
- Traffic Calming
- Transit
- Signing
- Parking
- Areas of flooding and environmental concern



Agenda

- Welcome / Introductions
- Plan Purpose and Process
- Breakout Rooms:
 - Bike/Ped & Transit
 - Traffic, Freight & Parking
 - Environment, Flooding & Streetscape
- Wrap up / Q & A

City of New Castle Transportation Plan

Visioning Public Workshop

Share your vision at an interactive virtual meeting to help update the New Castle Transportation Plan.

February 10, 2021
7:00 PM to 9:00 PM
Location: ONLINE

We are seeking your feedback about transportation in the City of New Castle including your ideas about traffic, connectivity, bicycling and walking, transit, parking, freight, and flooding.

Register to attend at
www.wilmapco.org/cityofnewcastle

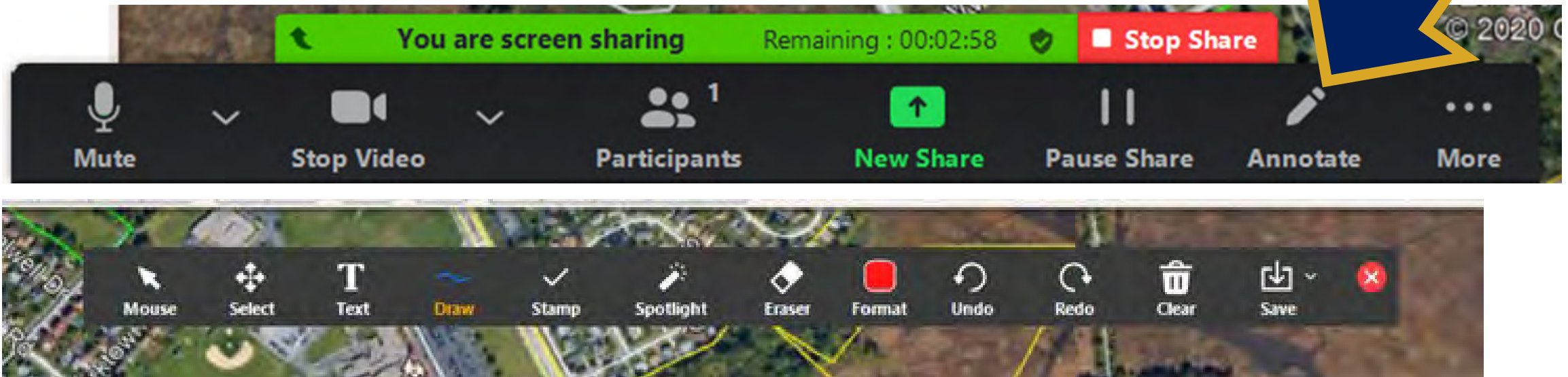
If, because of a disability, you require special assistance, please contact WILMAPCO at (302) 737-6205 no later than 3 business days before this event.

Breakout Session Instructions

- Automatically transported into the Breakout Session and back
- Moderator
- Sessions will be recorded
- Maps for reference
- Each Session will have a topic



- *9 – Raise Hand
- *6 – Unmute/Mute





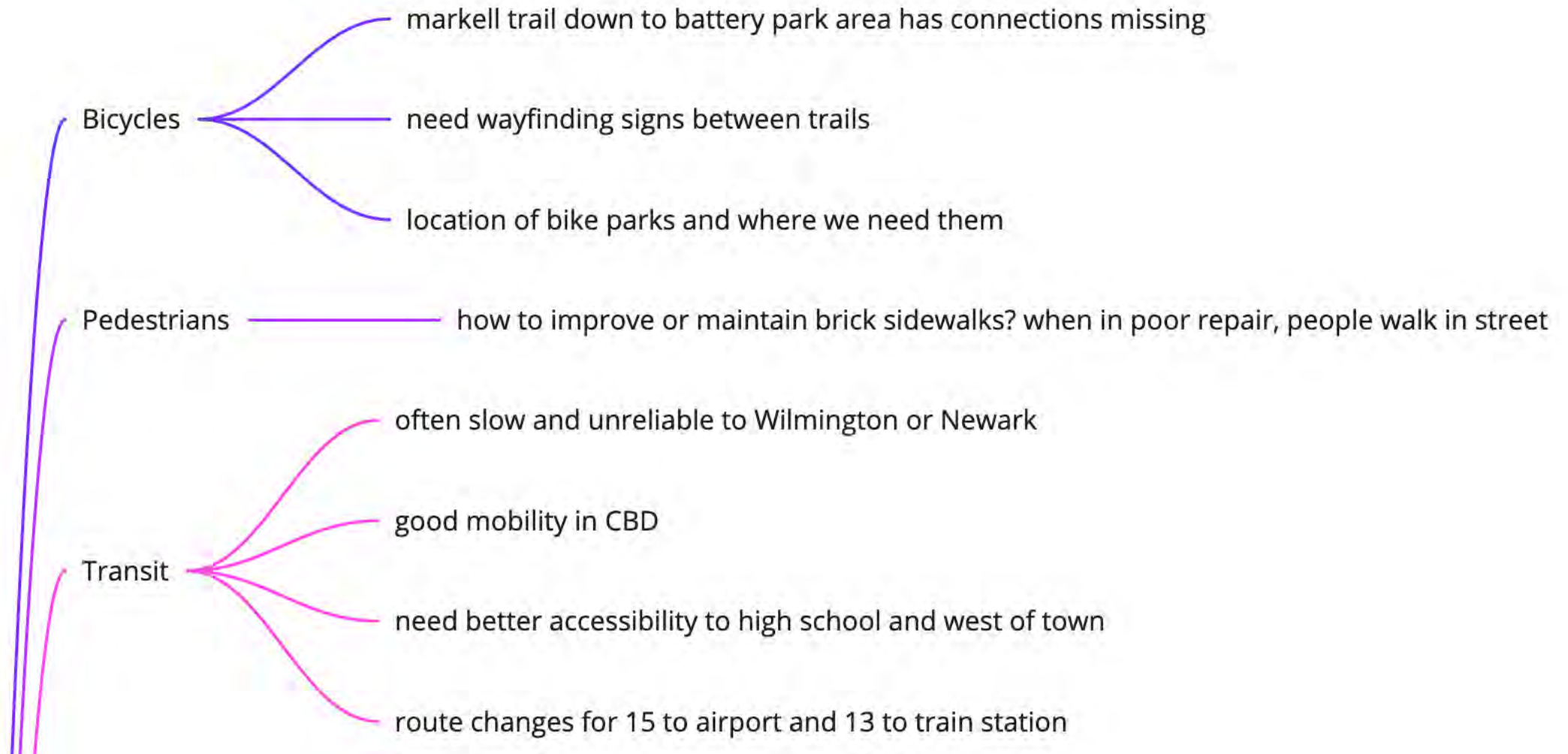
ZOOM BREAKOUT ROOMS

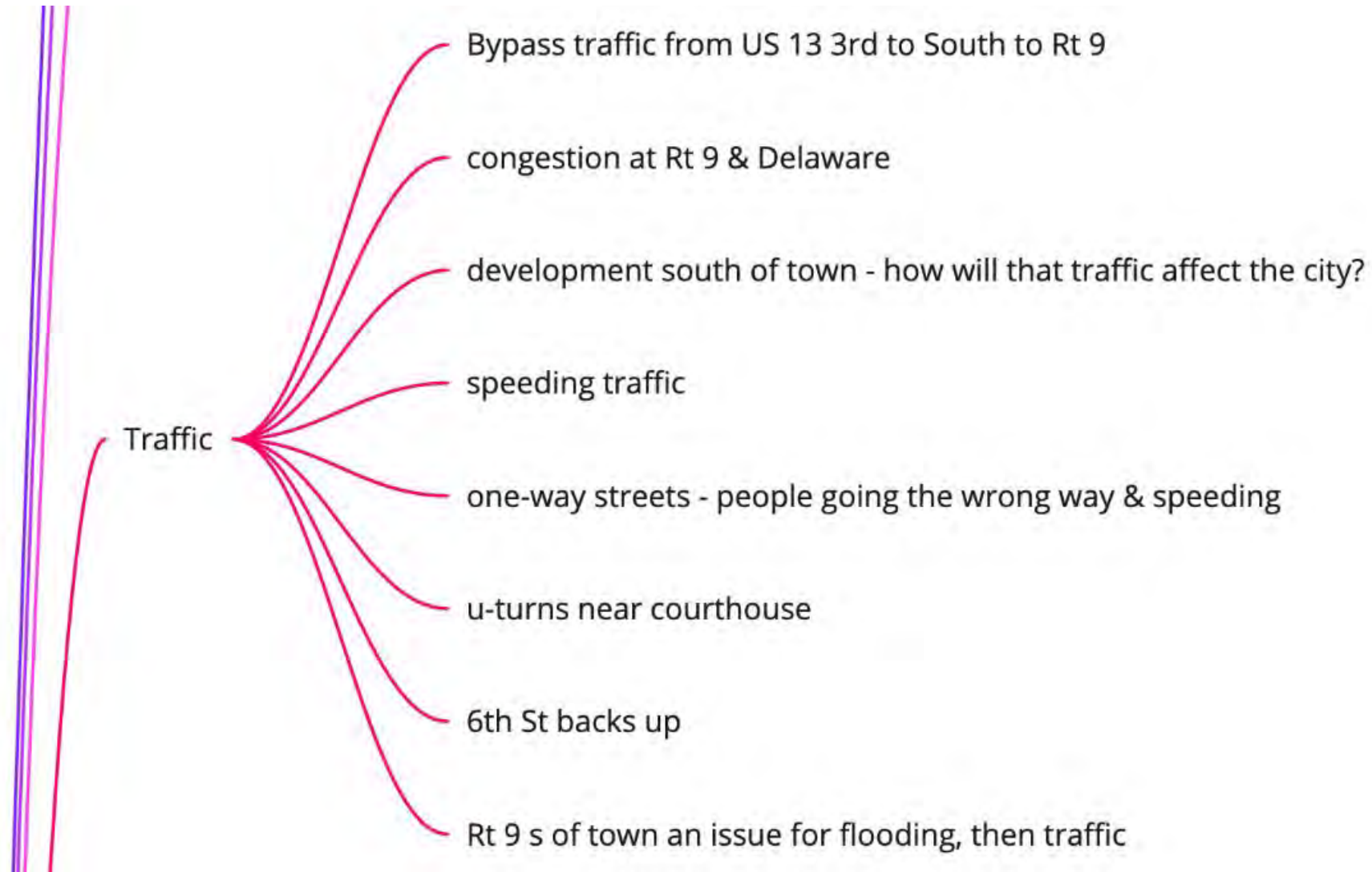
Small group conversations

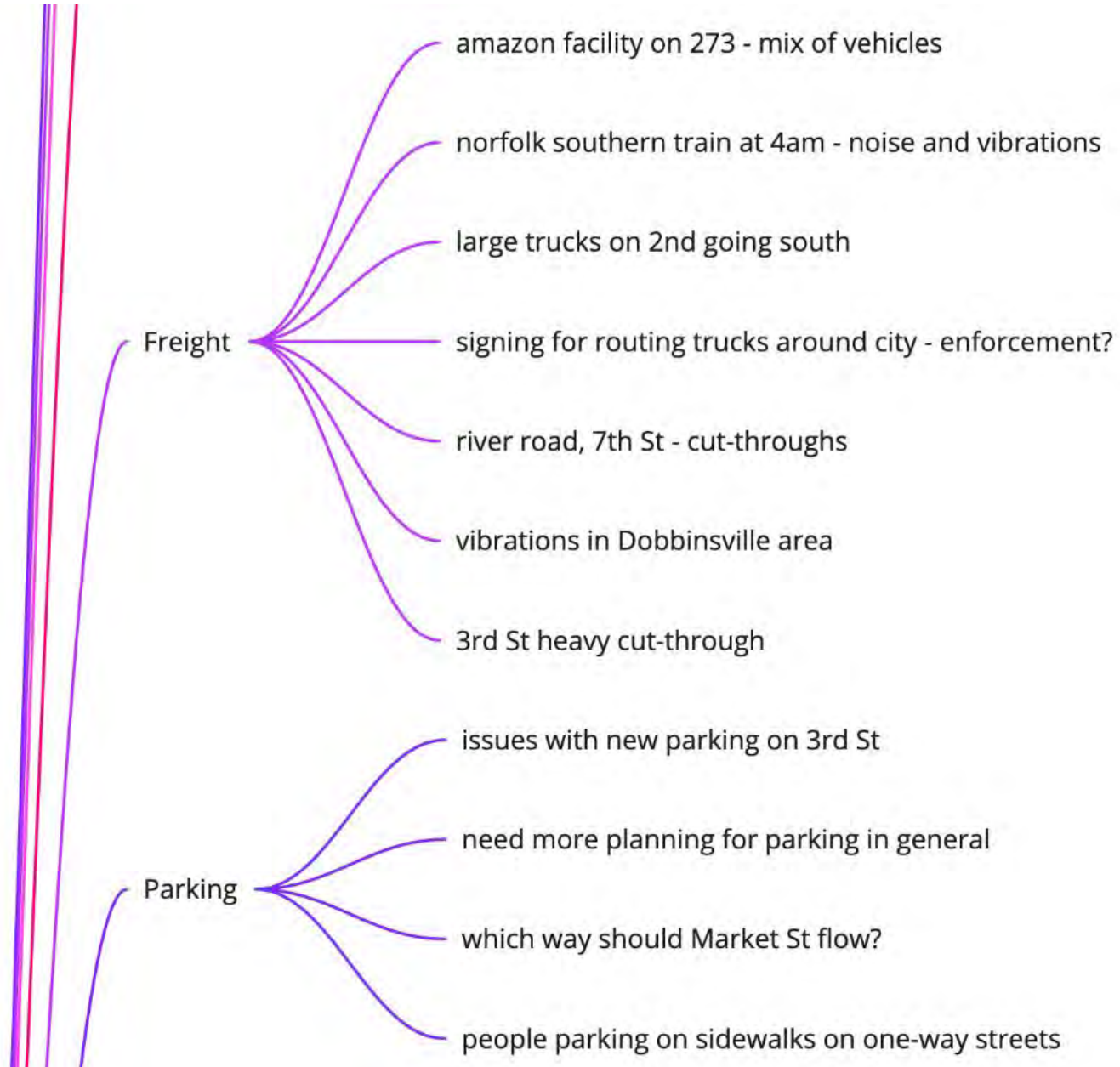
Used Google Earth maps and Zoom annotation tools.

Each session introduced with short presentation

Moderators reported back after each







Other Issues

- some rivalry between commercial and residential interests
- additional traffic from attractions like Kalmar Nickel?
- don't just re-hash studies from years ago

Intersections

- 273 & 9 ————— needs better signage - some people stop when they don't have to
- near shopping center light ————— button for crosswalk not ada accessible
- rt 9 north of town very difficult
- ferry cutoff and turn to Delaware St
- 7th St over to Delaware St
- 273 & 7th St
- Harris corner
- 273-141

Completed Existing Data Collection

Fall 2020

Visioning Workshop

February 10, 2021

Alternatives Development

Winter/Spring 2021

Public Workshop #2

Late Spring/Early Summer 2021

Refine Alternatives/Draft Report

Summer 2021

Public Workshop #3

Late Summer/Early Fall 2021

Final Report

Fall 2021

Next Steps



www.wilmapco.org/cityofnewcastle



Heather Dunigan
302-737-6205 ext 118
hdunigan@wilmapco.org