



# CONNECTING WITH THE ARDENS

A TRANSPORTATION PLAN



**WILMAPCO NMTWG**

*December 5, 2022*

**WILMAPCO**

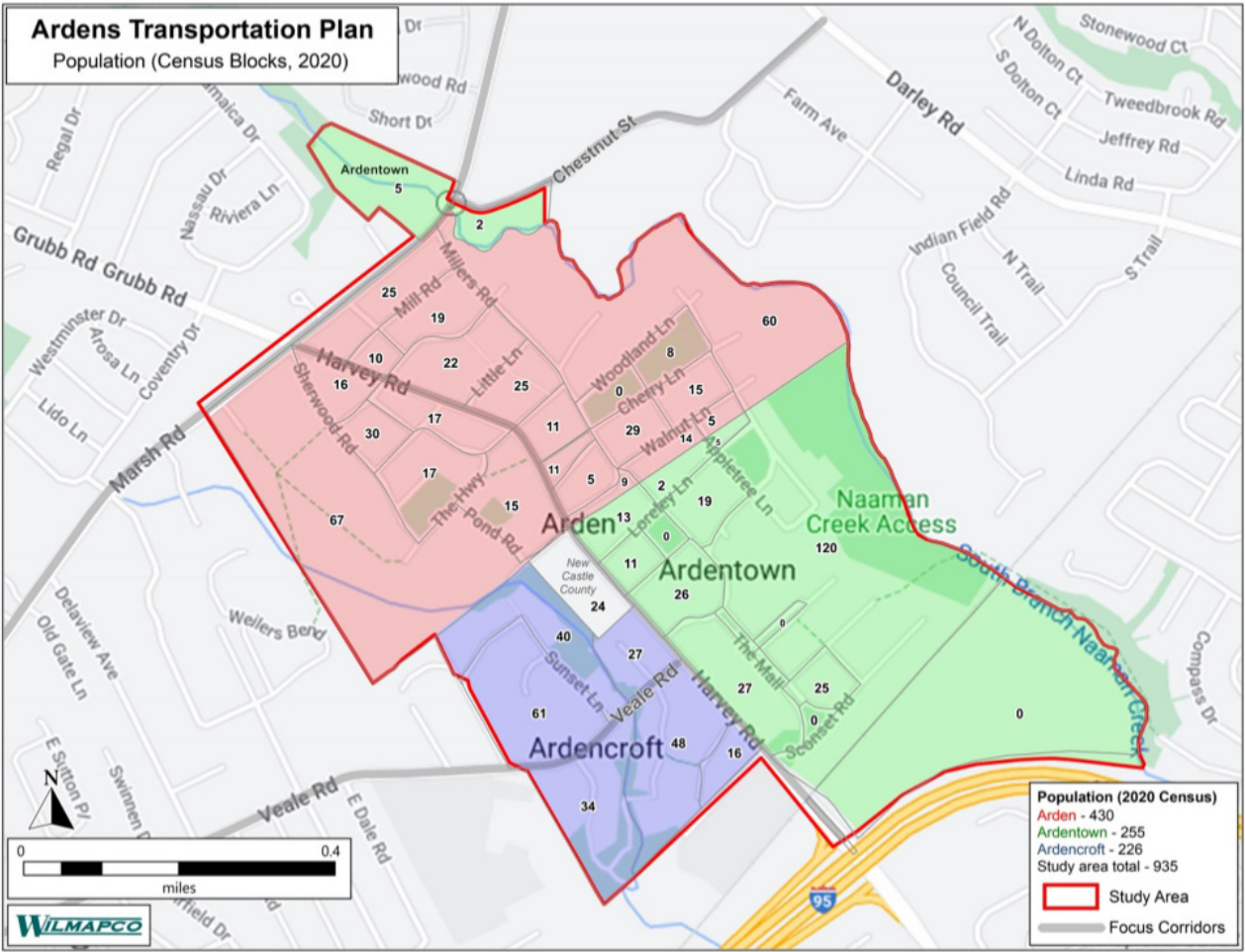
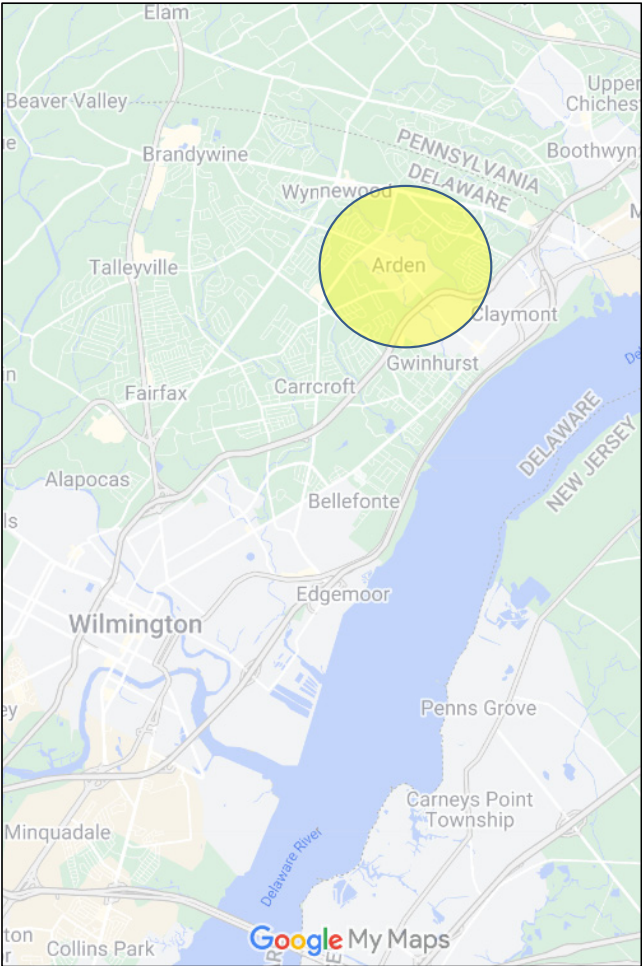


TRAFFIC PLANNING  
AND DESIGN, INC.

REMLINE

[wilmapco.org/ardens](http://wilmapco.org/ardens)

# Location

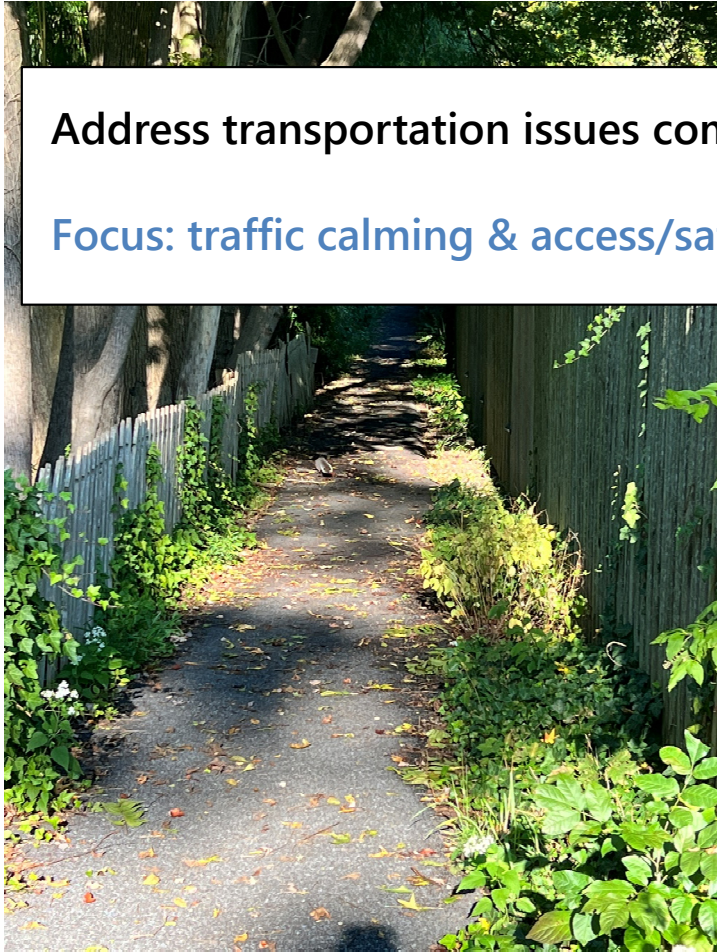


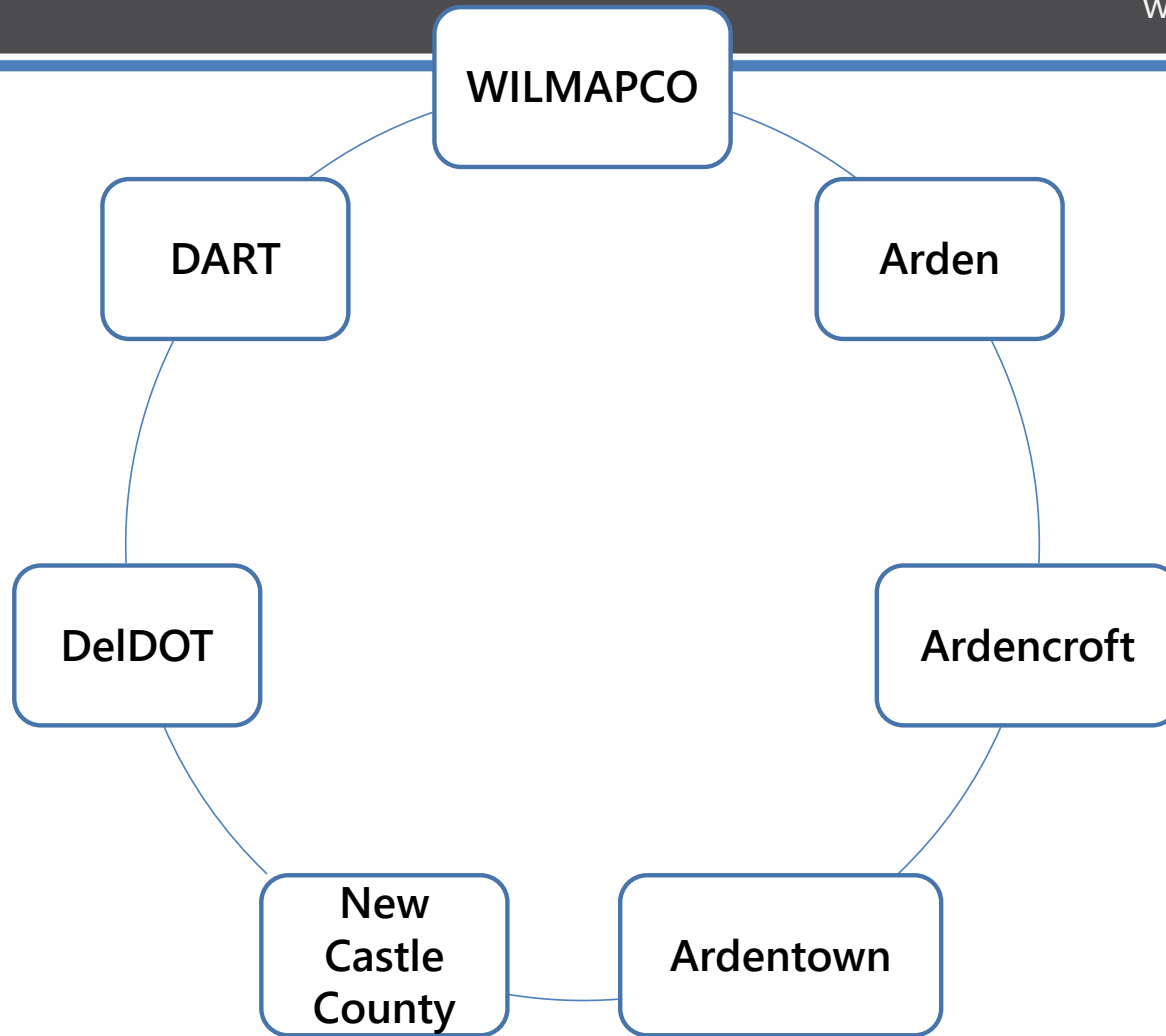


# Goal

Address transportation issues common to the Ardens

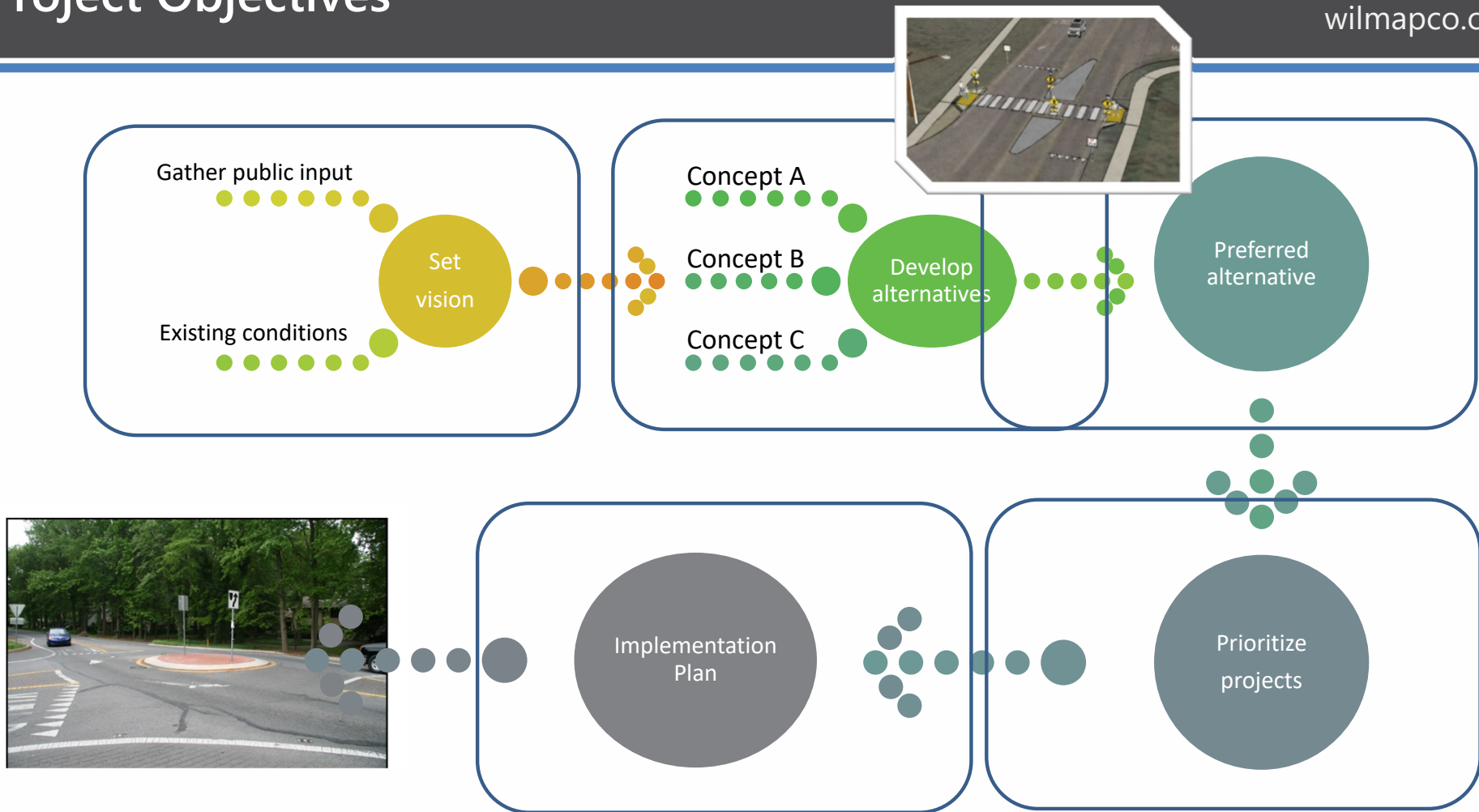
Focus: traffic calming & access/safety of active transportation





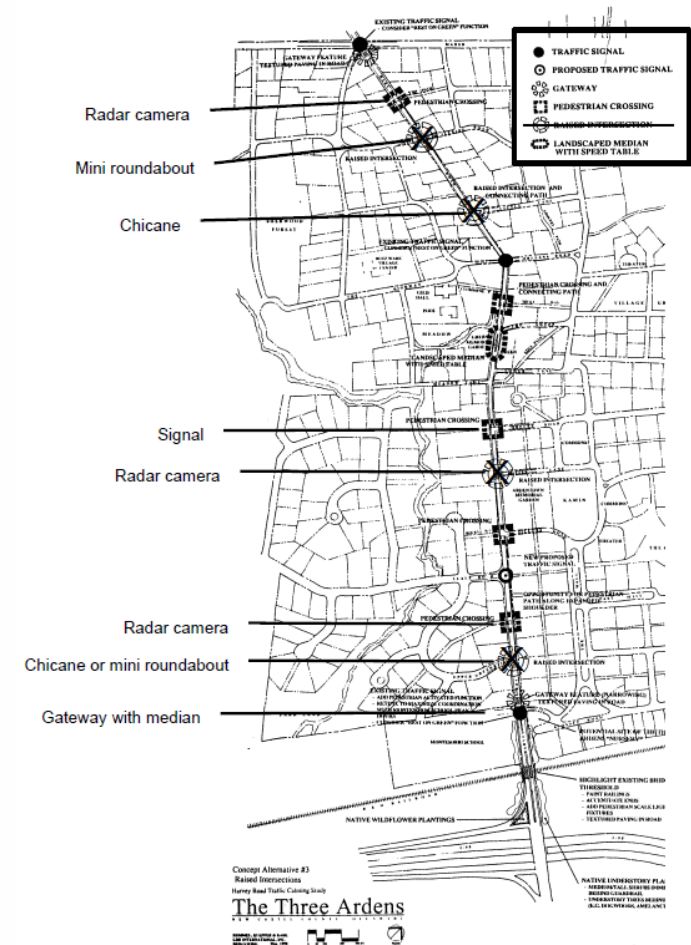


# Project Objectives



# Points of Consensus – Harvey Road (1999)

- » No vertical calming features
- » Use of horizontal calming features
- » Compliance with DeIDOT standards
- » Use of low-level landscaping
- » Features will be traversable for emergency vehicles, and buses





# Ardens Walkable Community Workshop

**WILMAPCO**  
[wilmapco.org/ardens](http://wilmapco.org/ardens)



# Ardens Walkable Community Workshop

**WILMAPCO**  
[wilmapco.org/ardens](http://wilmapco.org/ardens)

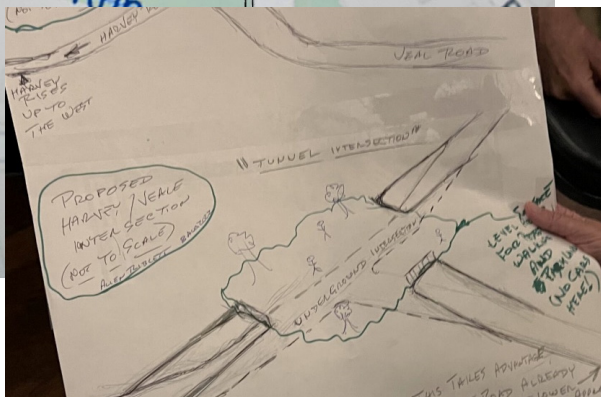
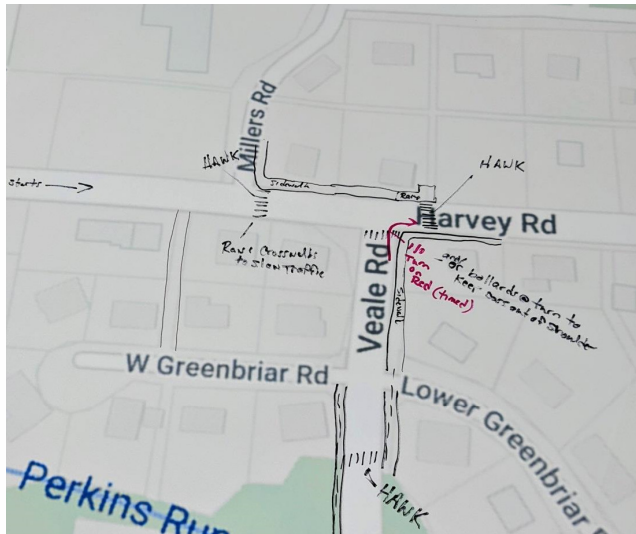




# Ardens Walkable Community Workshop

**WILMAPCO**

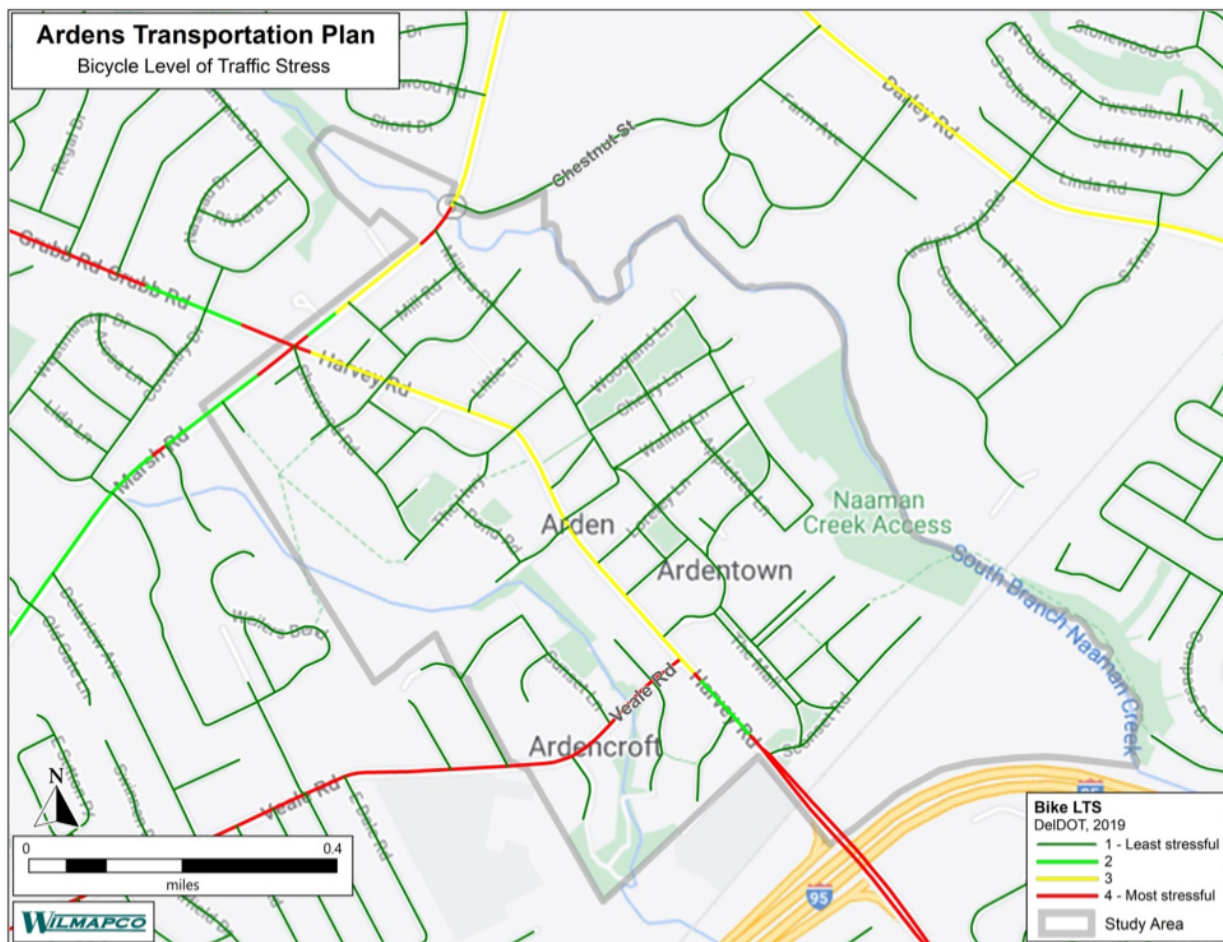
[wilmapco.org/ardens](http://wilmapco.org/ardens)



# Existing Conditions Report

**WILMAPCO**

[wilmapco.org/ardens](http://wilmapco.org/ardens)



Ardens Transportation Plan  
Task 1 Report  
*Identify Issues, Opportunities, and Constraints*

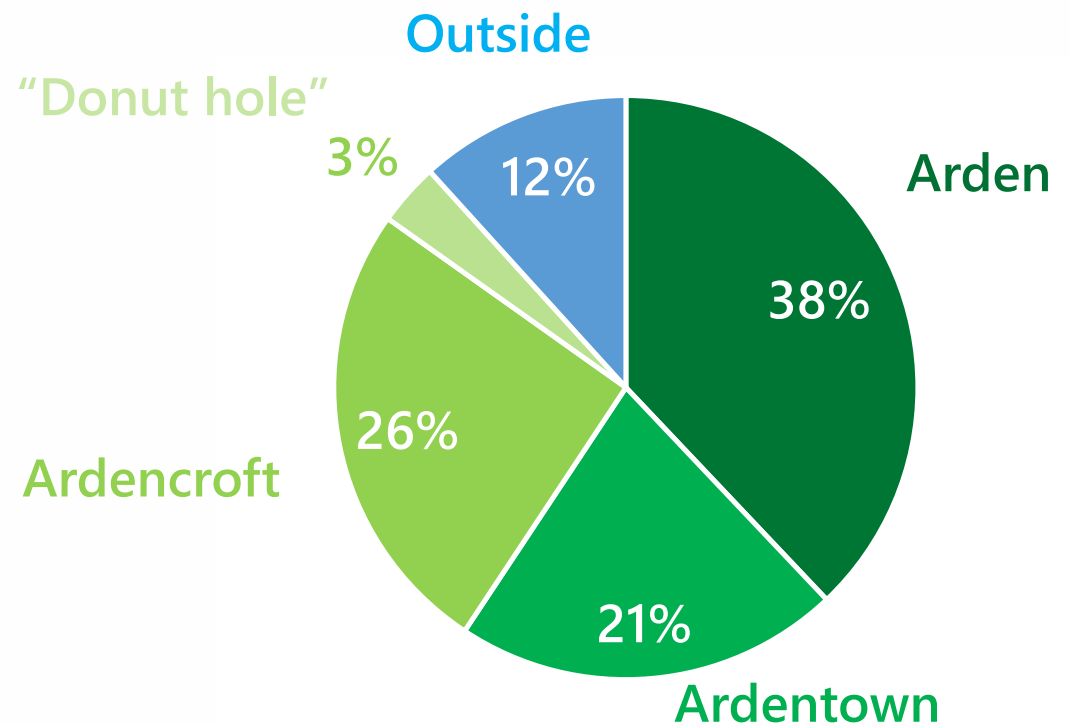
July 2022

**WILMAPCO**  
Wilmington Area Planning Council  
[www.wilmapco.org](http://www.wilmapco.org)



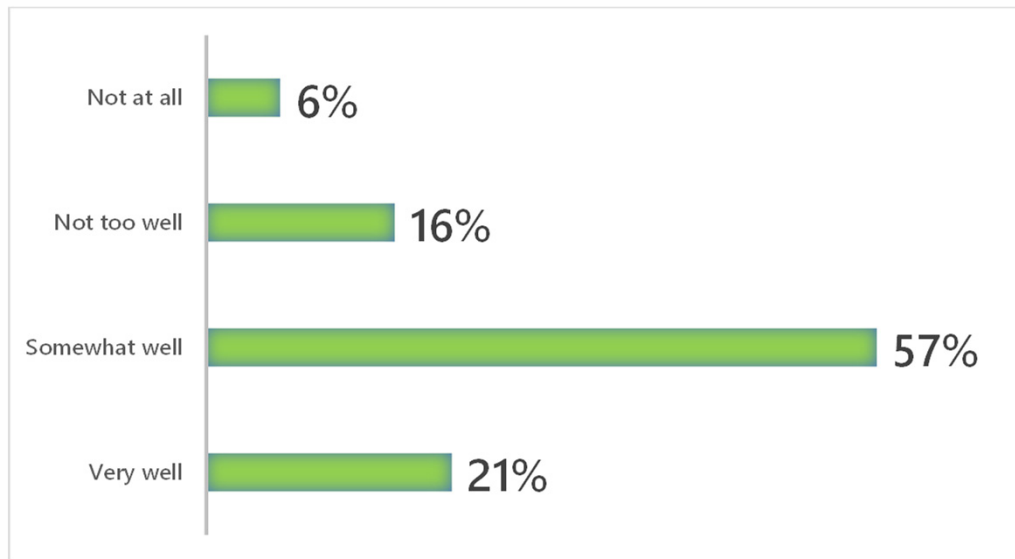
- » 20 questions
- » Online only
- » 145 responses
  - Final scrubbed results

## Respondent Locations

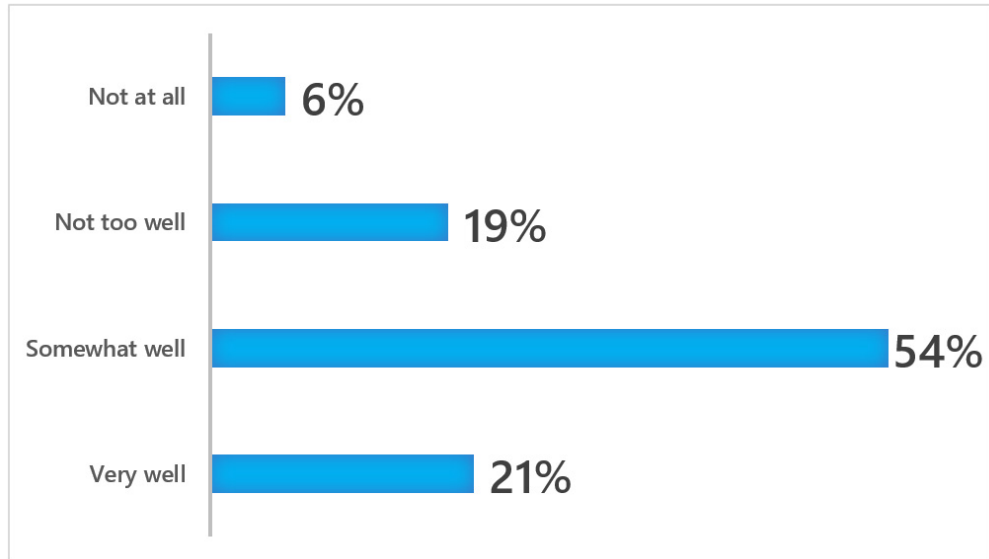


## How well does the transportation system meet your needs?

### Ardens (within the Ardens)



### NCC (within the region)\*

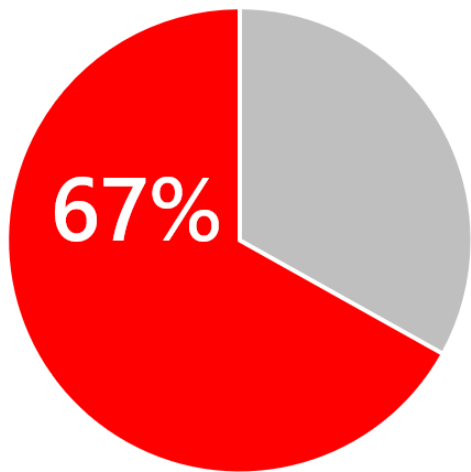


\*2022 WILMAPCO Public Opinion Survey

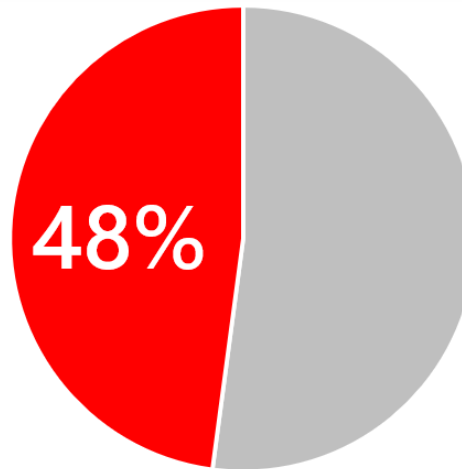


## Very or Extremely Concerned with Speeding and Safety

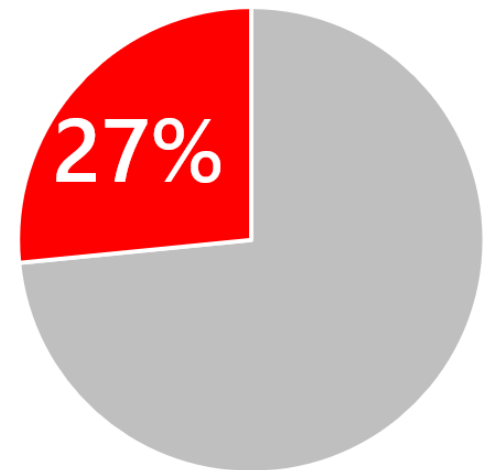
Harvey Road



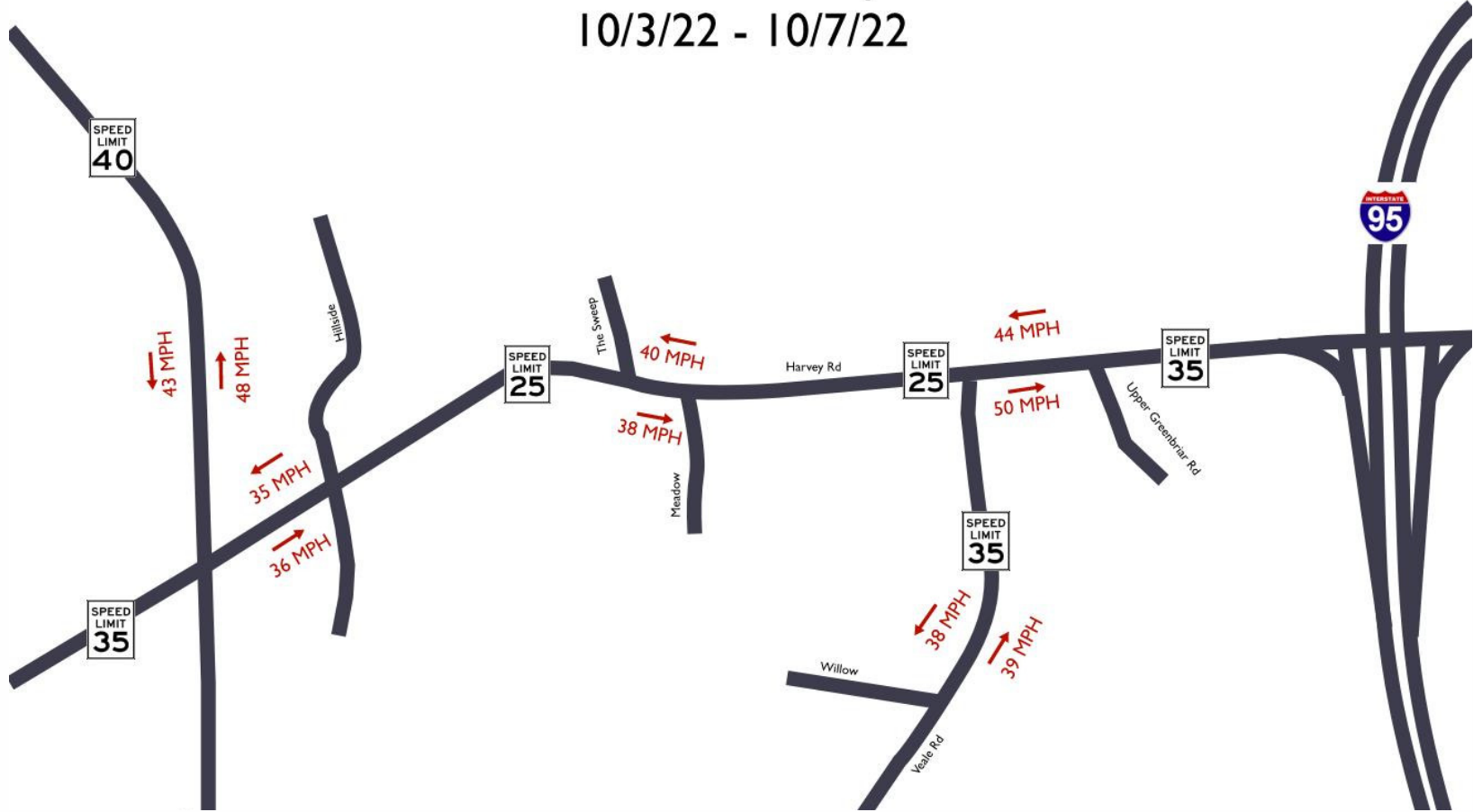
Veale Road



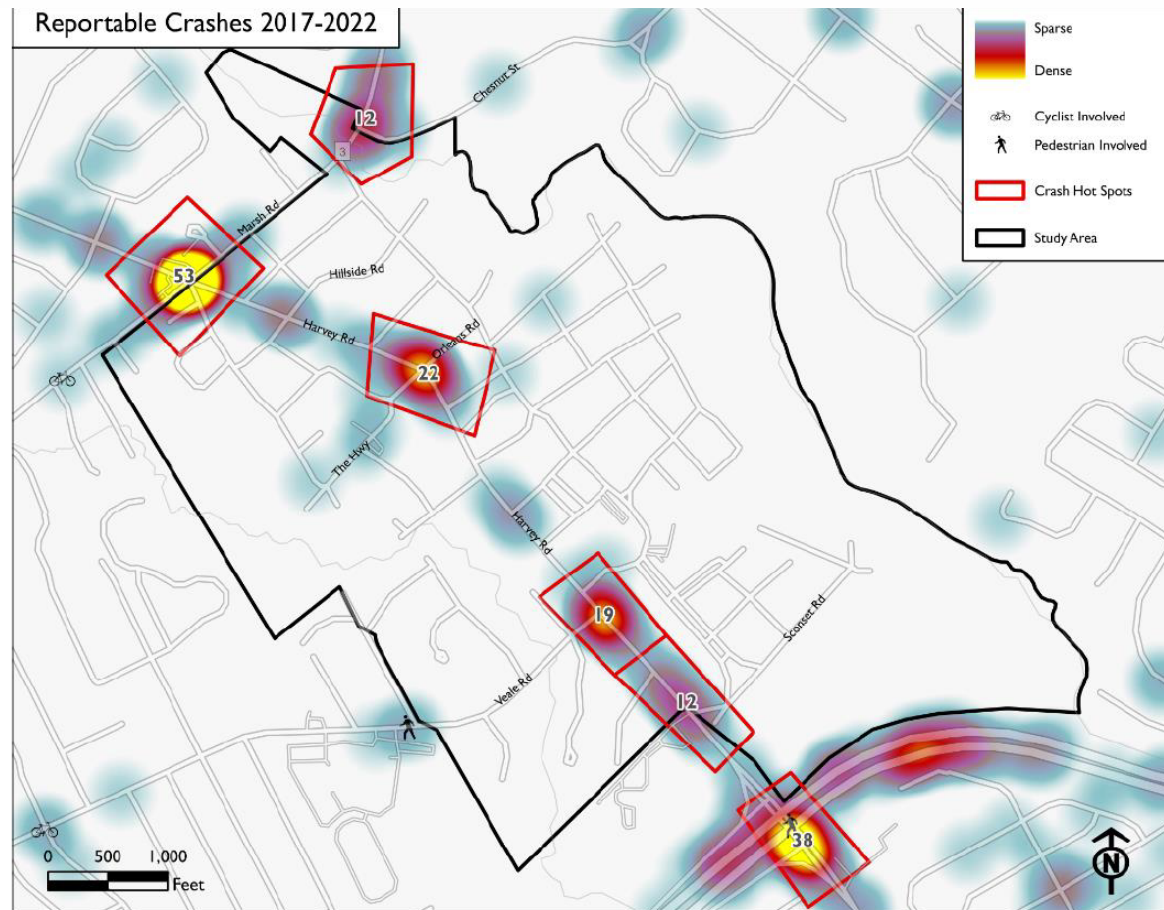
Marsh Road



85th - Percentile Speeds  
10/3/22 - 10/7/22



# Background Data



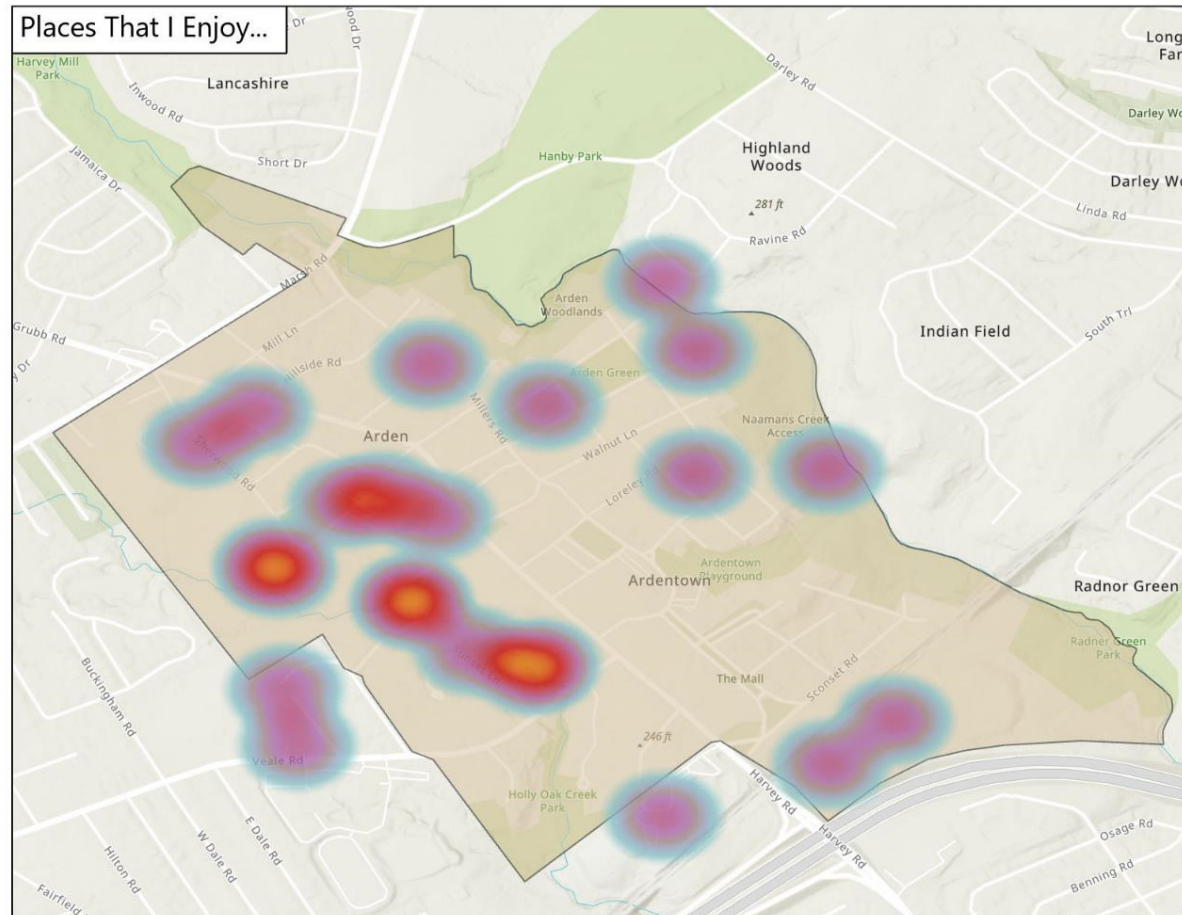




# WikiMap Results

**WILMAPCO**

[wilmapco.org/ardens](http://wilmapco.org/ardens)



# WikiMap Results

**WILMAPCO**

[wilmapco.org/ardens](http://wilmapco.org/ardens)





# WikiMap Results

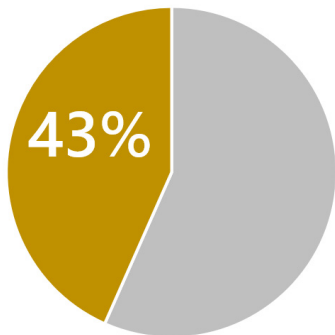
**WILMAPCO**

[wilmapco.org/ardens](http://wilmapco.org/ardens)

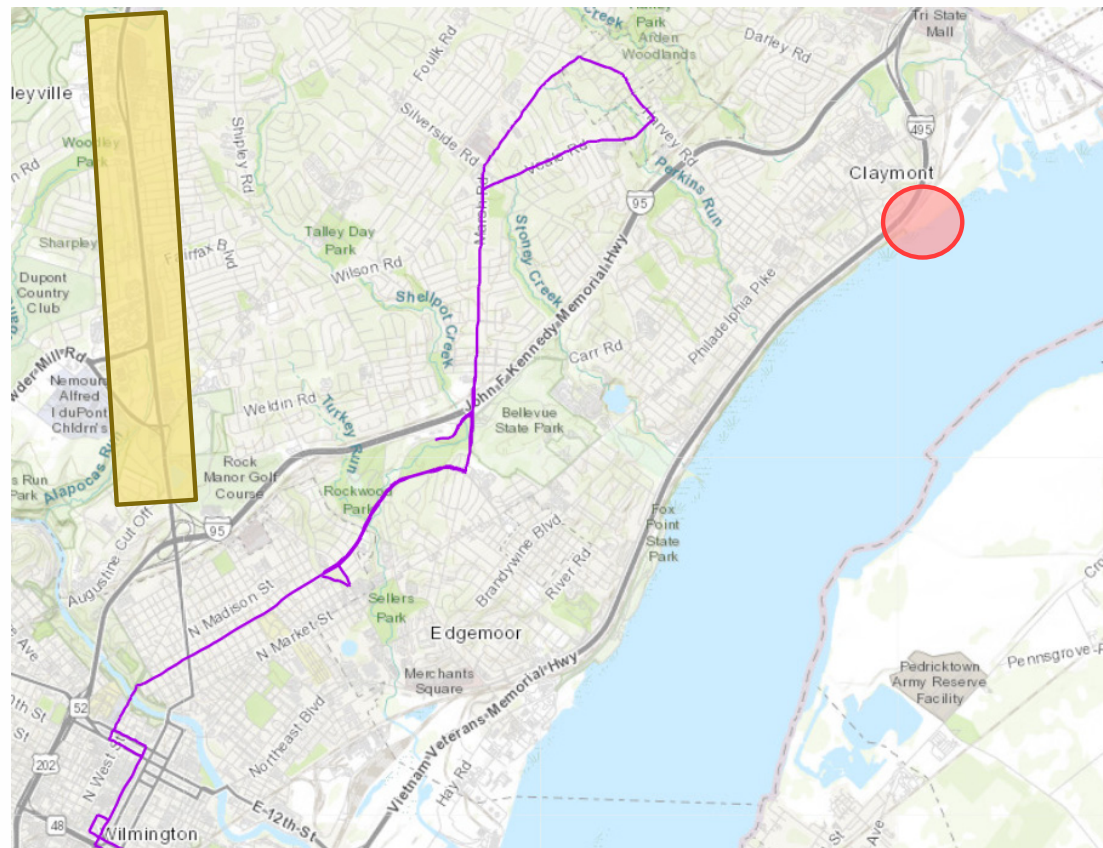


# Desired Bus Connections

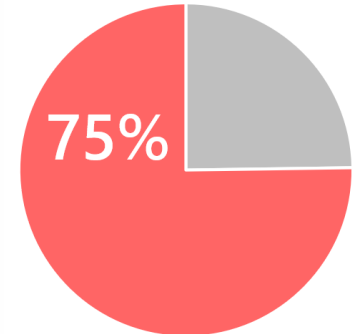
## Concord Pike



## Route 11



## Claymont Train Station

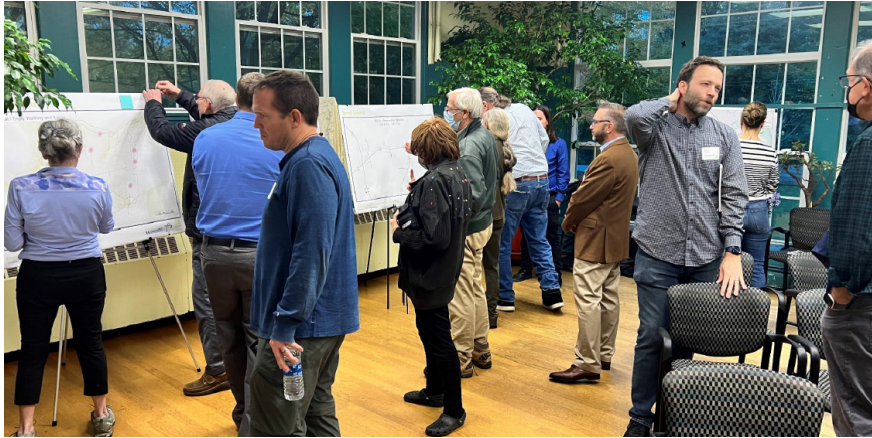




# Public Workshop 1

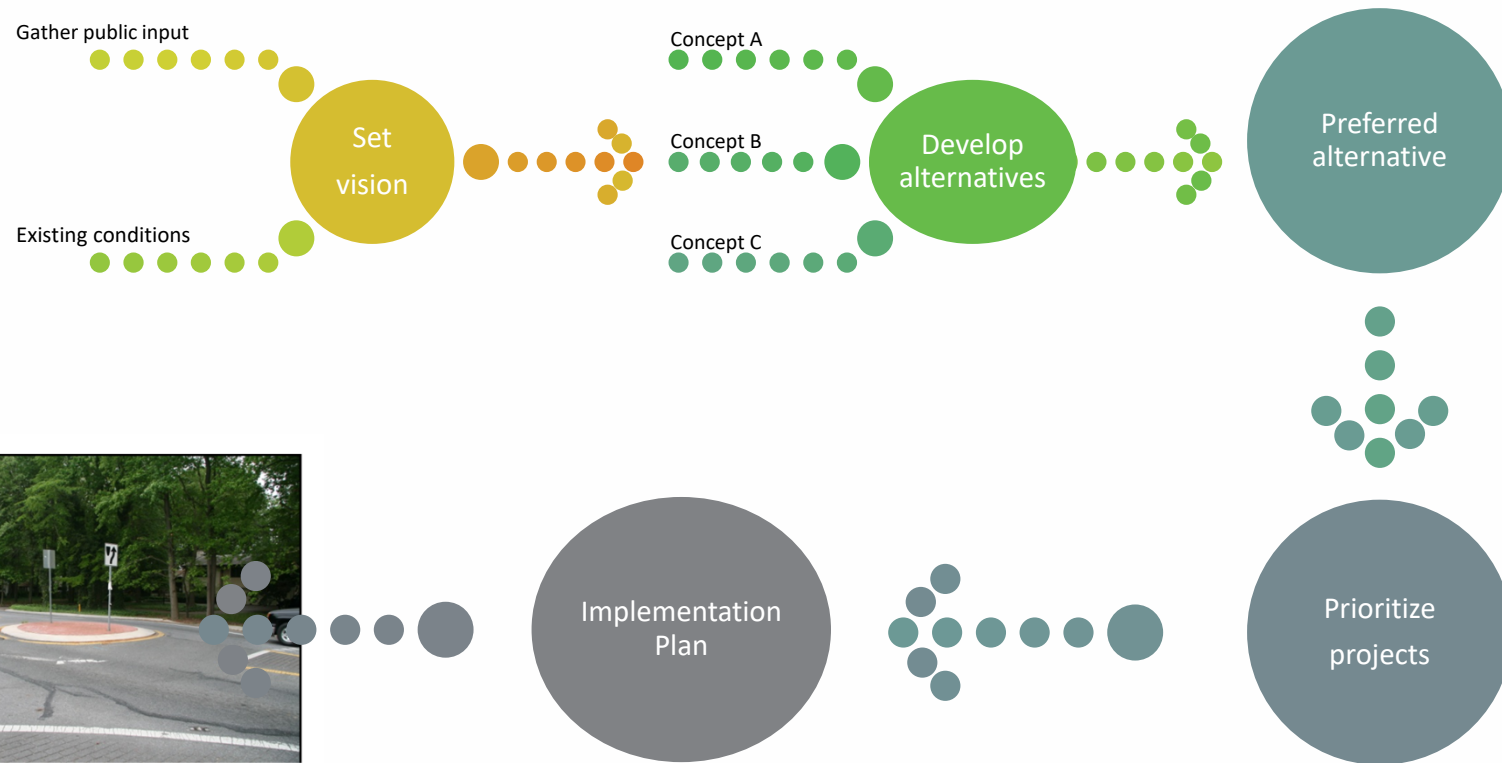
WILMAPCO

wilmapco.org/ardens





# Next Steps





**CONNECTING WITH**  
**THE ARDENS**  

---

**A TRANSPORTATION PLAN**



[wilmapco.org/ardens](http://wilmapco.org/ardens)