

PlanMaryland

Maryland's
First Comprehensive Plan for
Development, Preservation and
Sustainability

Our Town Meeting
November 17, 2010



What is PlanMaryland

Provides direction to
New Development

1,000,000 new residents
400,000 new homes
600,000 new jobs



What is PlanMaryland

Will Address Land, Economy and
Energy needs through

Compact development

Economic development

Housing affordability

Resource protection

Energy conservation

Greenhouse gas emissions reduction



What is PlanMaryland

Will Improve coordination

Among State agencies

Between State and Locals

Leverage Federal Resources



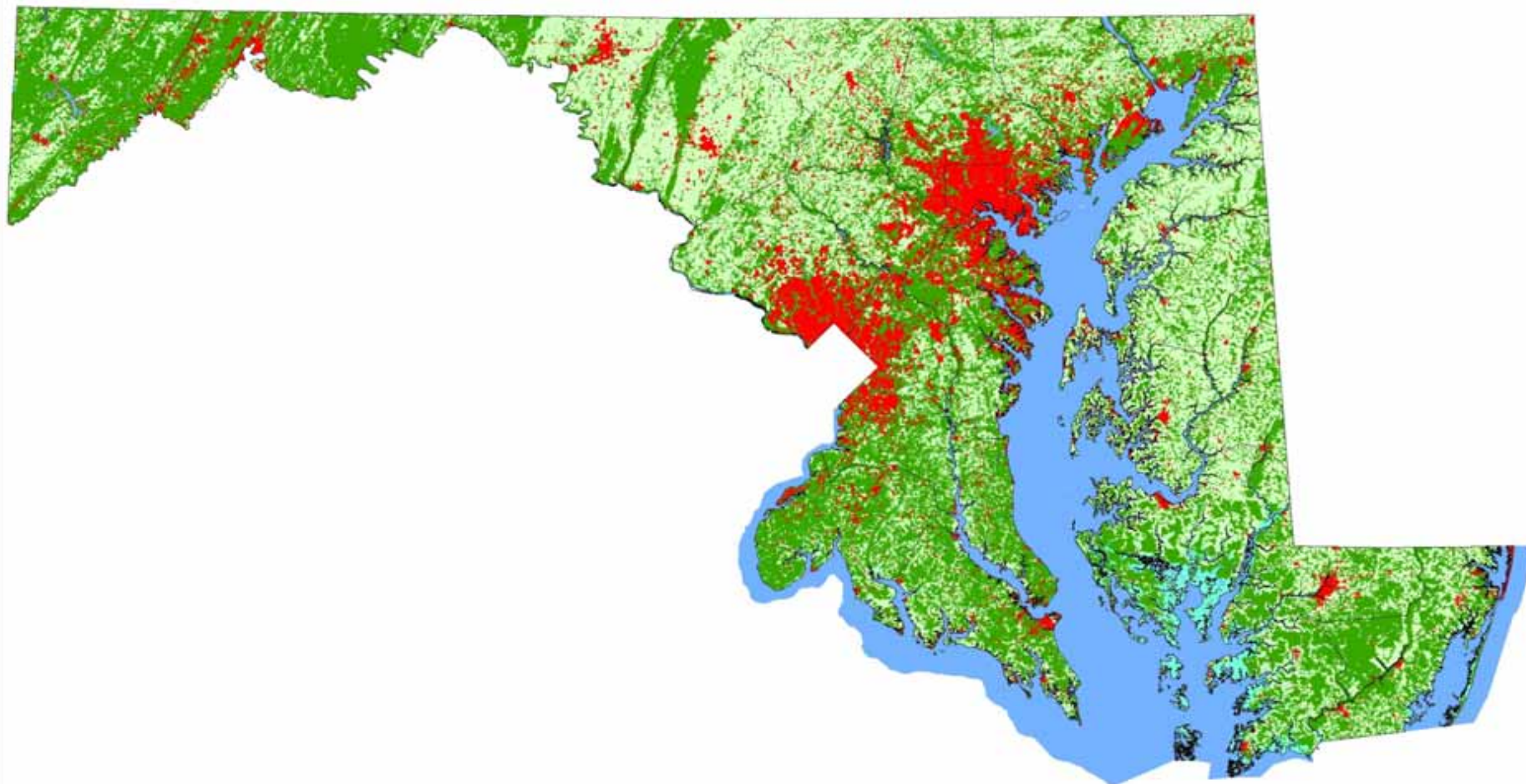
Authority: Annotated Code of Maryland

Provides that the
Secretary of Planning
prepare a State Development
Plan containing recommendations for land
use, major public works, circulation, and
areas of critical state concern



Why is PlanMaryland Needed?





Developed



Wetlands



Agriculture



Water



Forest



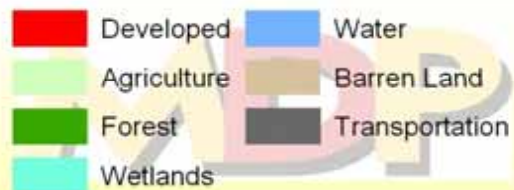
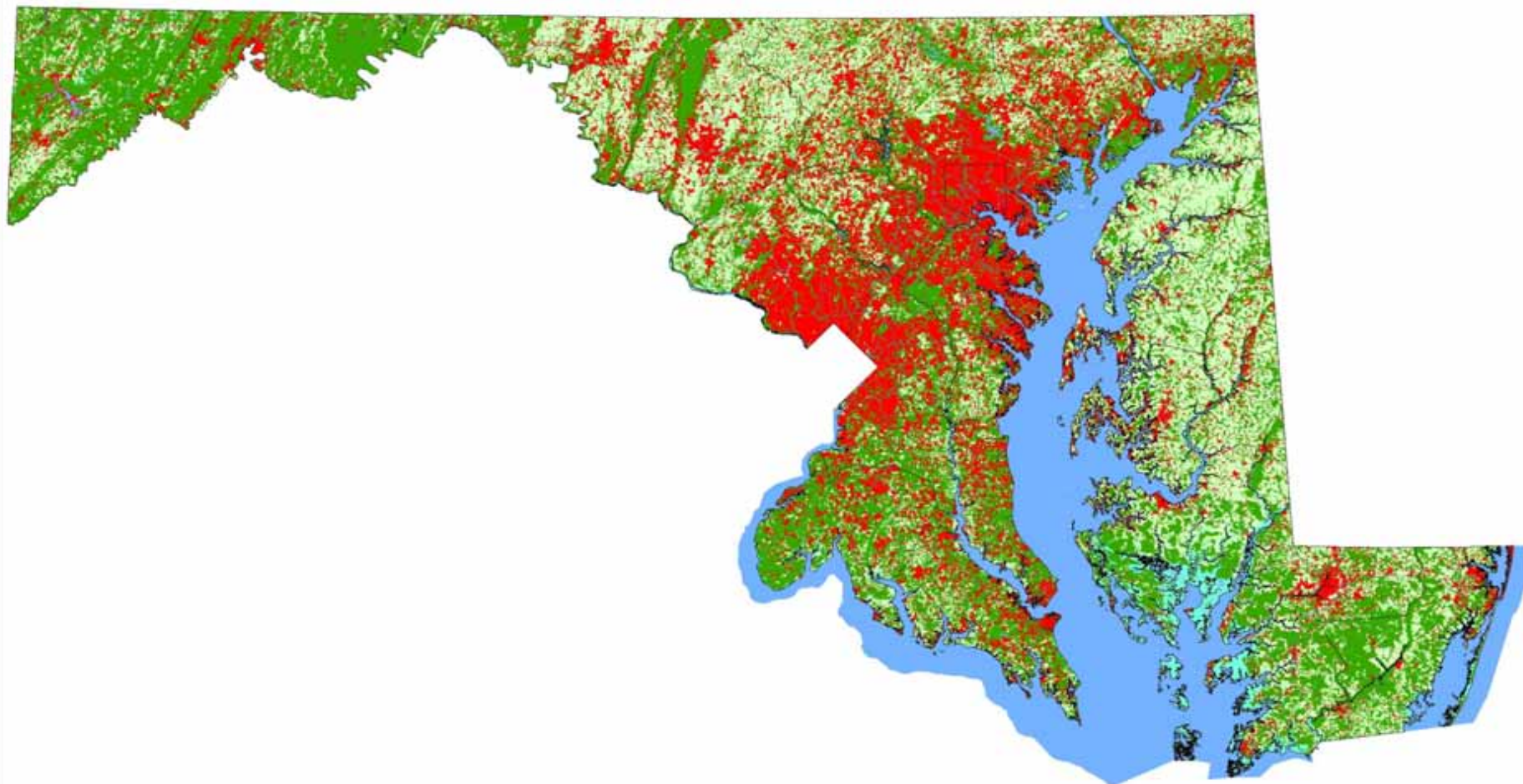
Barren Land

State of Maryland Development, 1973

Maryland Department of Planning
Land Use Planning and Analysis Division
Map Created September 2010

0 10 20 40 Miles



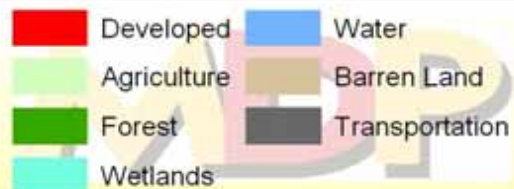
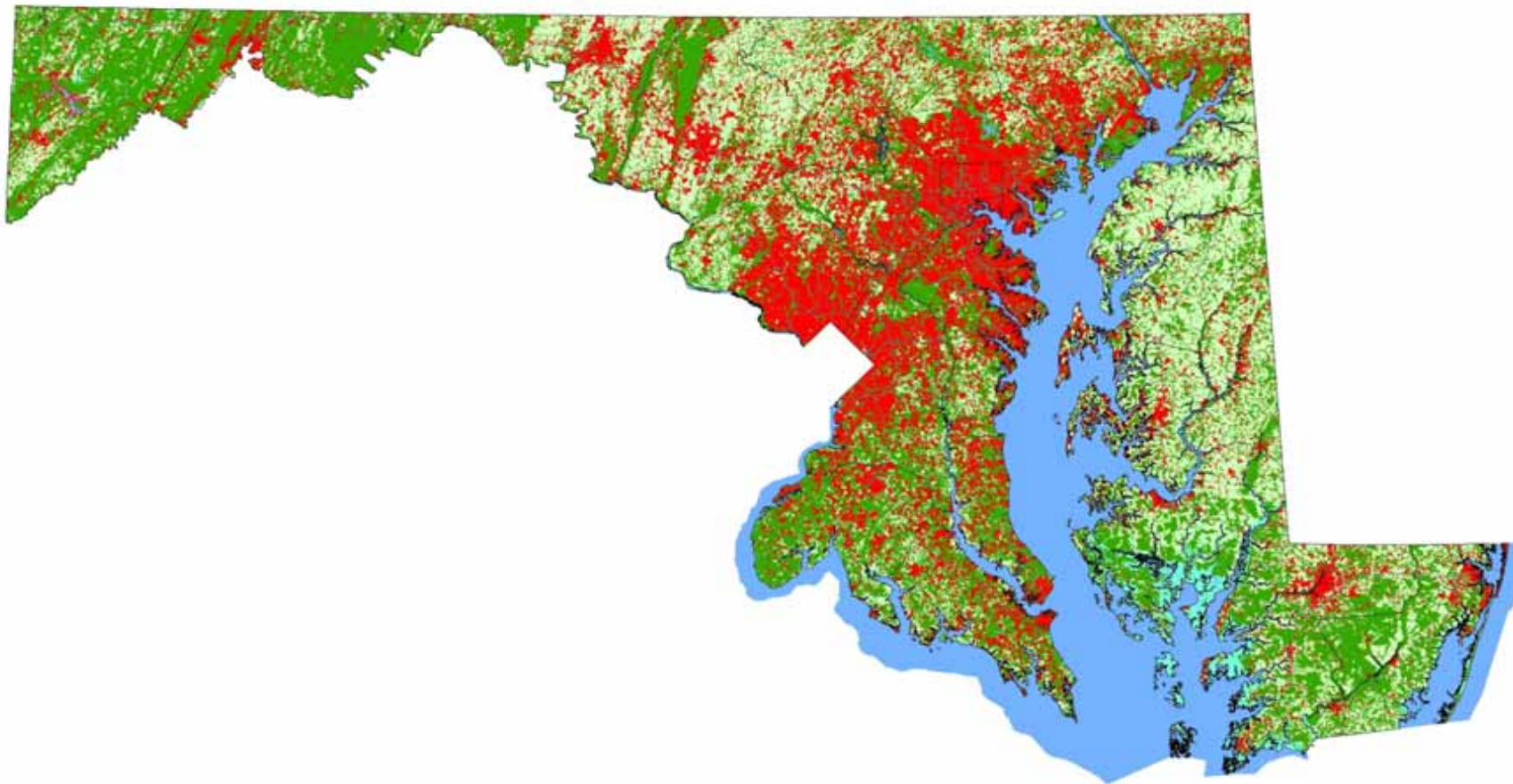


State of Maryland Development, 2002

Maryland Department of Planning
Land Use Planning and Analysis Division
Map Created September 2010

0 10 20 40 Miles

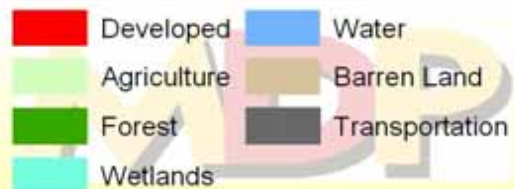
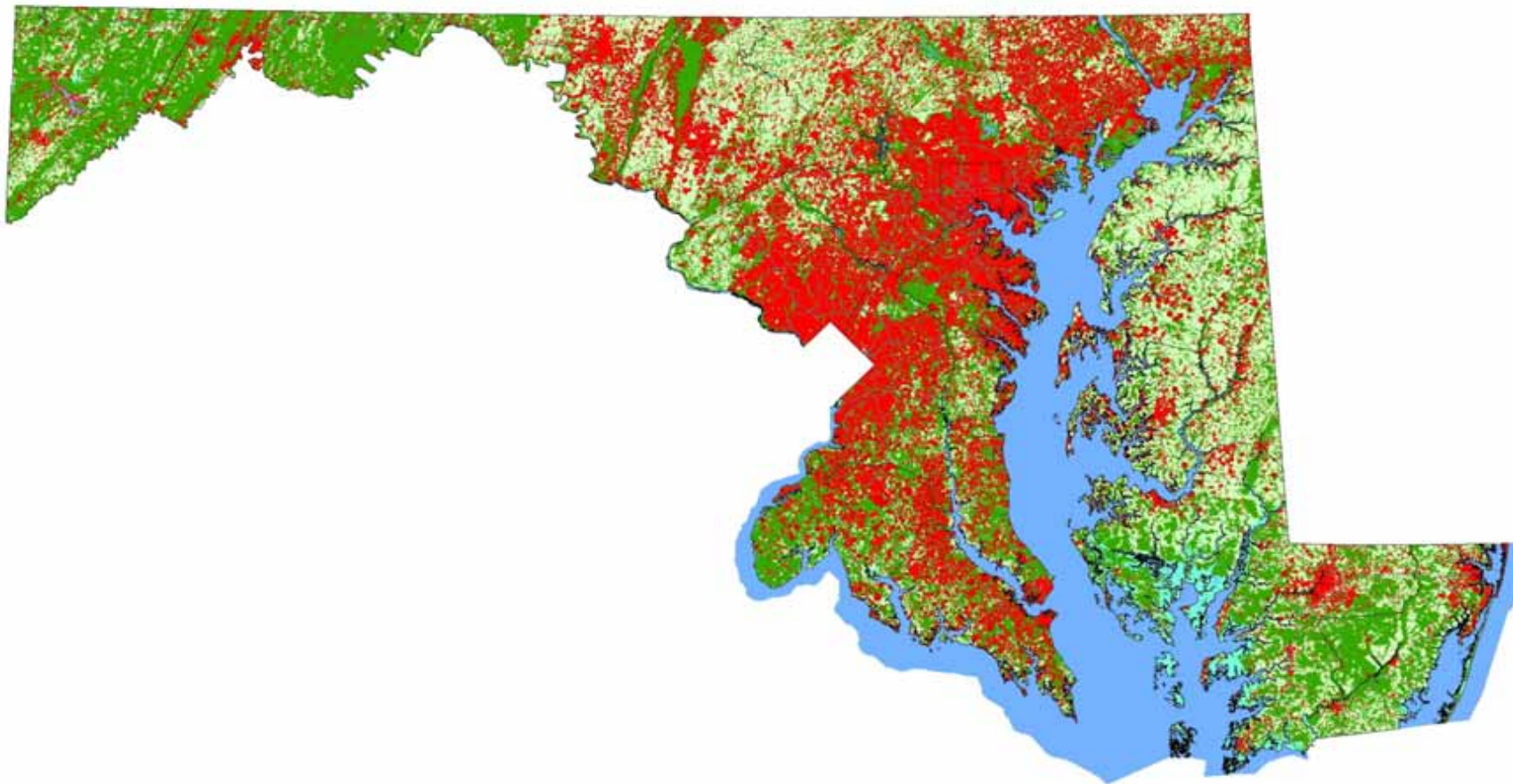




State of Maryland 2010 Land Use/Land Cover

Maryland Department of Planning
Land Use Planning and Analysis Division
Map Created September 2010

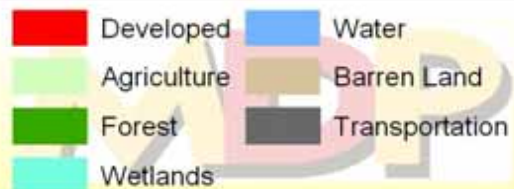
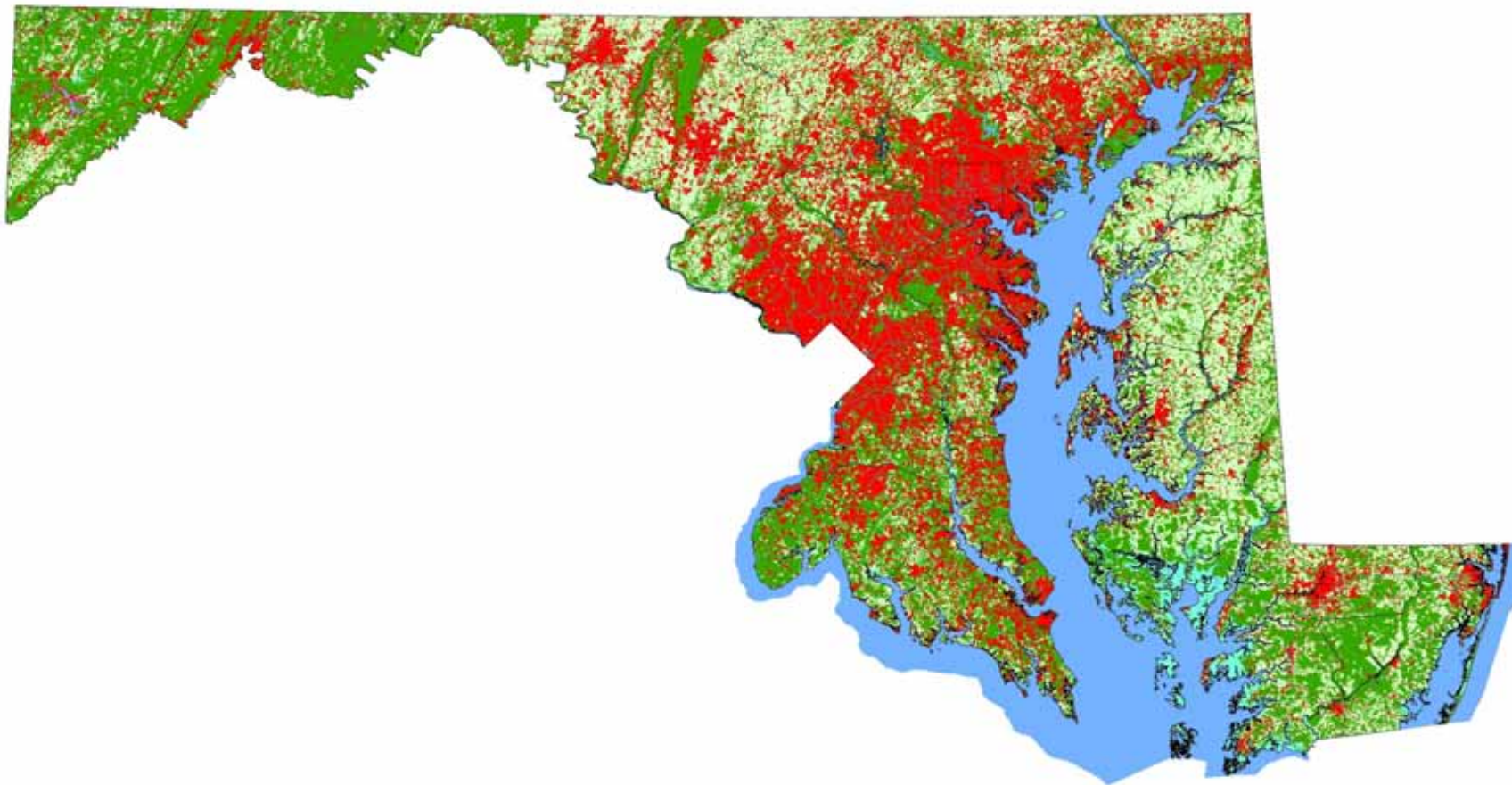




State of Maryland
Development, 2030
Current Trends Scenario

Maryland Department of Planning
Land Use Planning and Analysis Division
Map Created September 2010





State of Maryland
Development, 2030
Smart Growth Scenario

Maryland Department of Planning
Land Use Planning and Analysis Division
Map Created September 2010



PlanMaryland Goals:

- **Concentrate Development in Suitable Areas**
- **Preserve and Protect Environmentally Sensitive Areas and Rural Areas**
- **Ensure a High Quality Life for Maryland Residents that is Sustainable Over Time**
- **Promote Economic Development**



PlanMaryland will:

Encourage sustainable development and protect quality of life

Develop land at a pace consistent with growth in population and housing

Strengthen existing cities and communities and reduce tax burdens

Protect farmland

Preserve our natural, historic, and cultural resources



PlanMaryland will:

Reduce automobile dependency

Increase access to transit, walking and biking

**Concentrate jobs in existing cities and communities,
strengthening economic development**

Increase housing affordability

**Minimize residential land consumption outside of
existing communities**



PlanMaryland *Development Outcomes:*

- Provide an adequate supply of housing affordable to all income levels
- Support the integration of mixed land uses into functional communities
- Revive underutilized commercial and industrial sites
- Minimize reliance on automobiles, fossil fuel consumption and greenhouse gas emissions



PlanMaryland *Preservation* Outcomes:

- Growth in rural areas is focused in existing centers
- Outside rural centers, development is limited
- Transportation infrastructure in rural areas does not encourage incompatible development



Environmental Issues Addressed by PlanMaryland

- Sprawl consumes 8 times more land per household than Smart Growth
- Produces almost 5 times more nitrogen pollution into bay



Economic Development Issues Addressed by PlanMaryland

- Putting workers closer to employment, with better mix of transportation, affordable housing options
- Better use of existing infrastructure in roads, schools reduces financial burden



Transportation Issues Addressed by PlanMaryland

- Shorter commuting (more balanced Job/Housing) and shorter distances to other destinations = less driving /lower VMT and less demand on transportation infrastructure
- Smart Growth = 12% less roadway lane miles (TCRP Cost of Sprawl Study)



PlanMaryland Focus Areas:

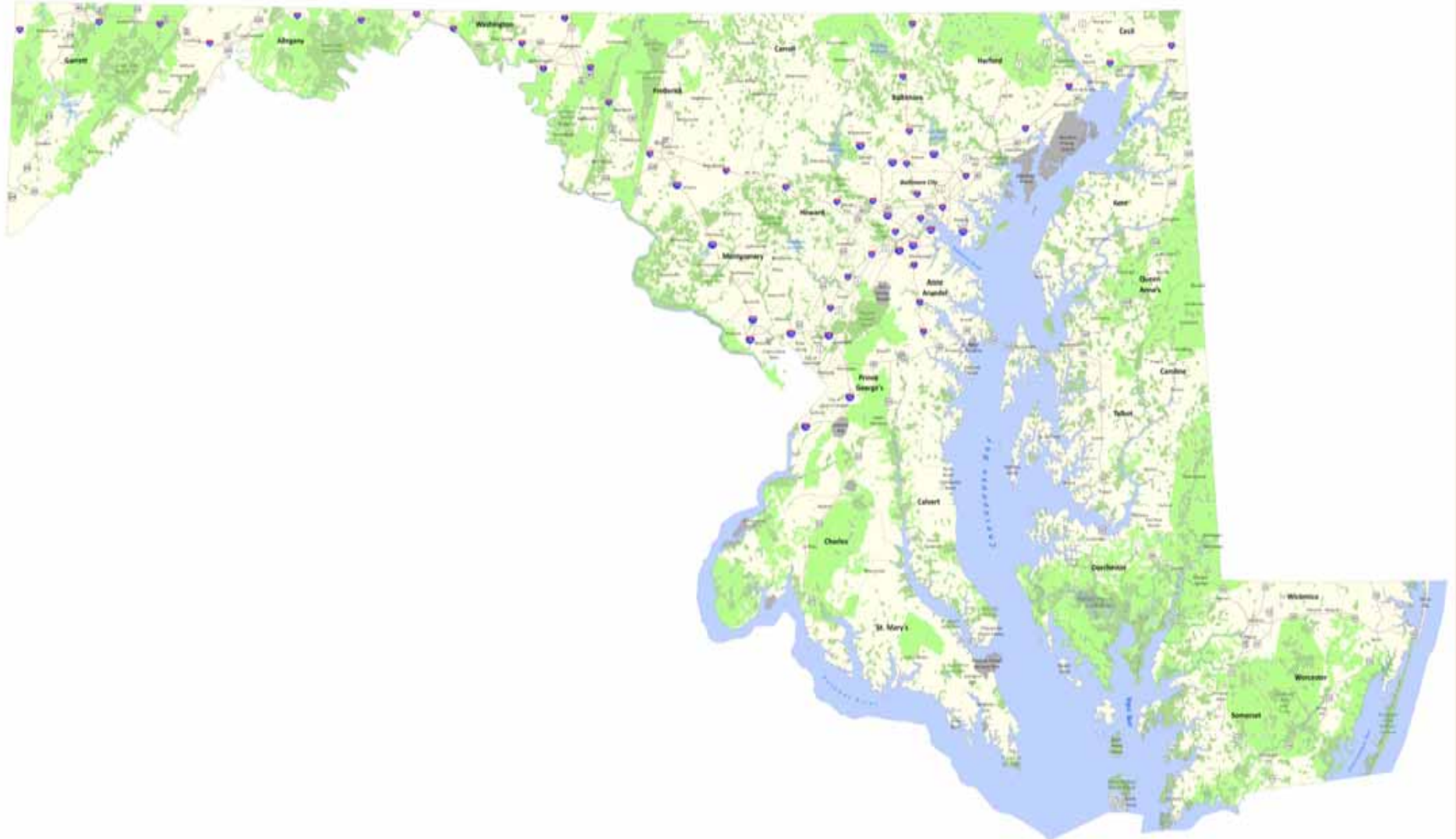
GreenPrint

AgPrint

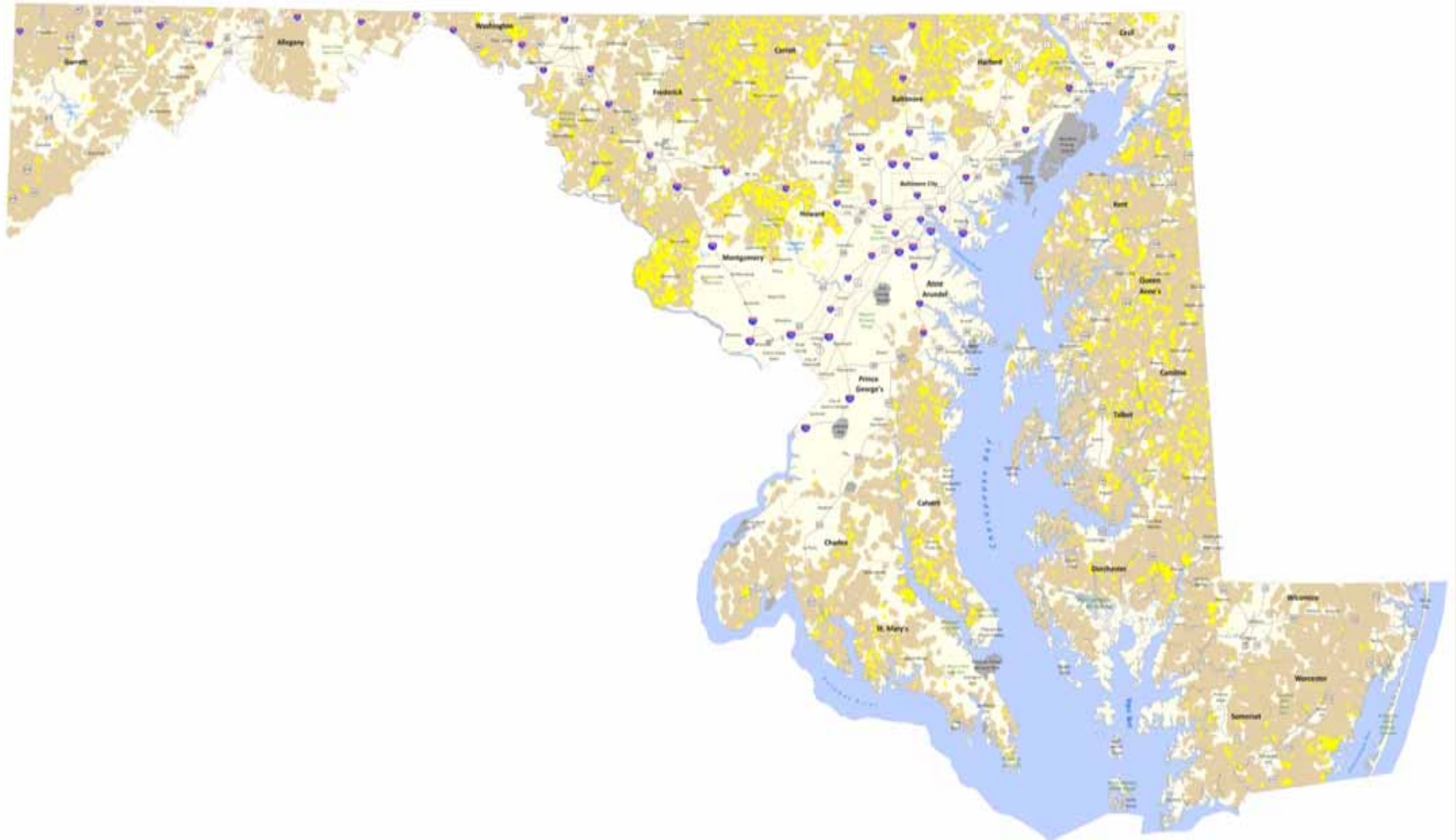
GrowthPrint



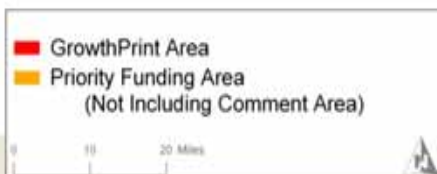
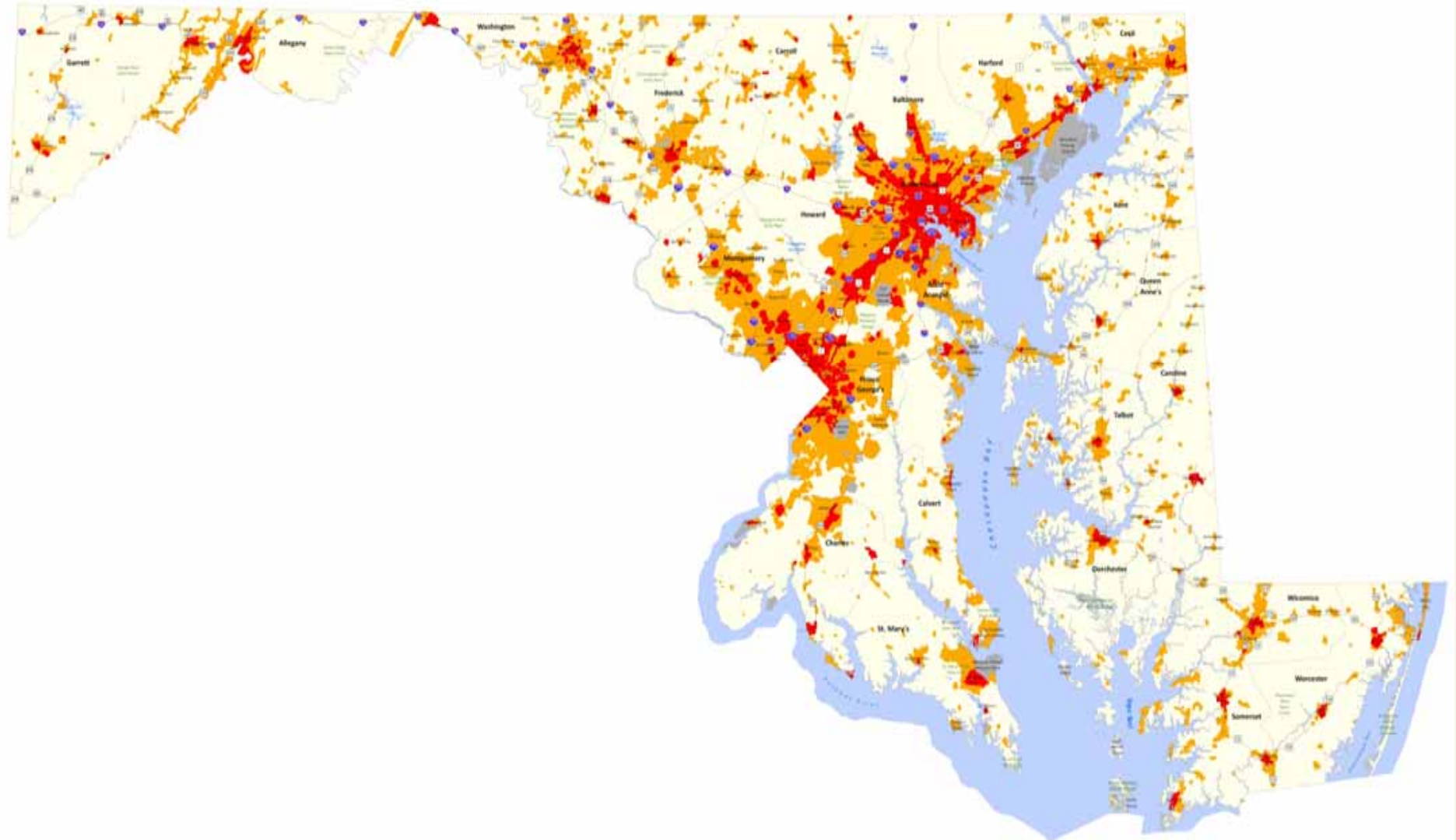
GreenPrint



AgPrint



GrowthPrint



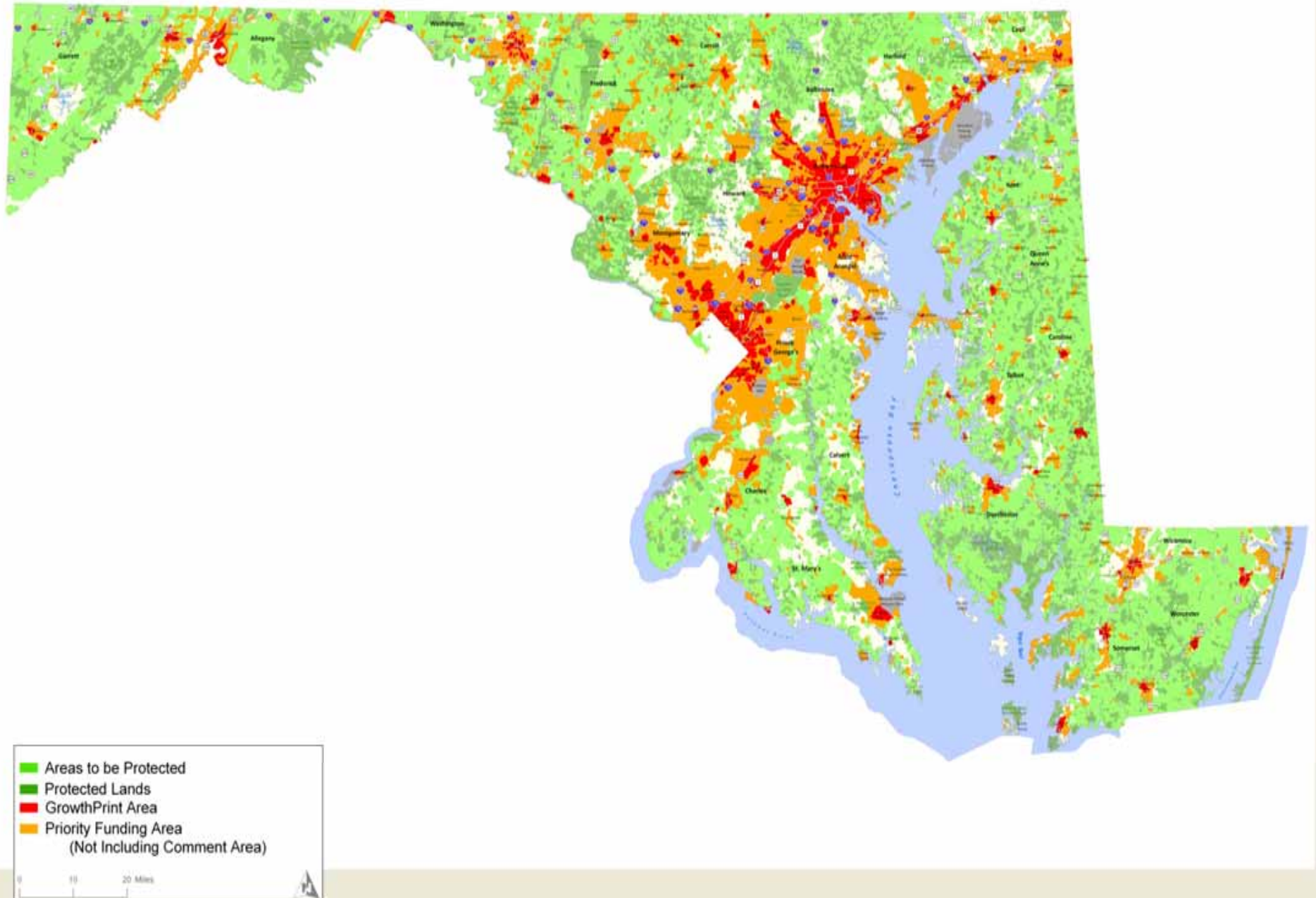
GREENPRINT

AGPRINT

GROWTHPRINT

STATE DEVELOPMENT PLAN

The Prints



Outreach - Public Participation

Stakeholder interviews

Stakeholder meetings

Public Forums

Internet surveys

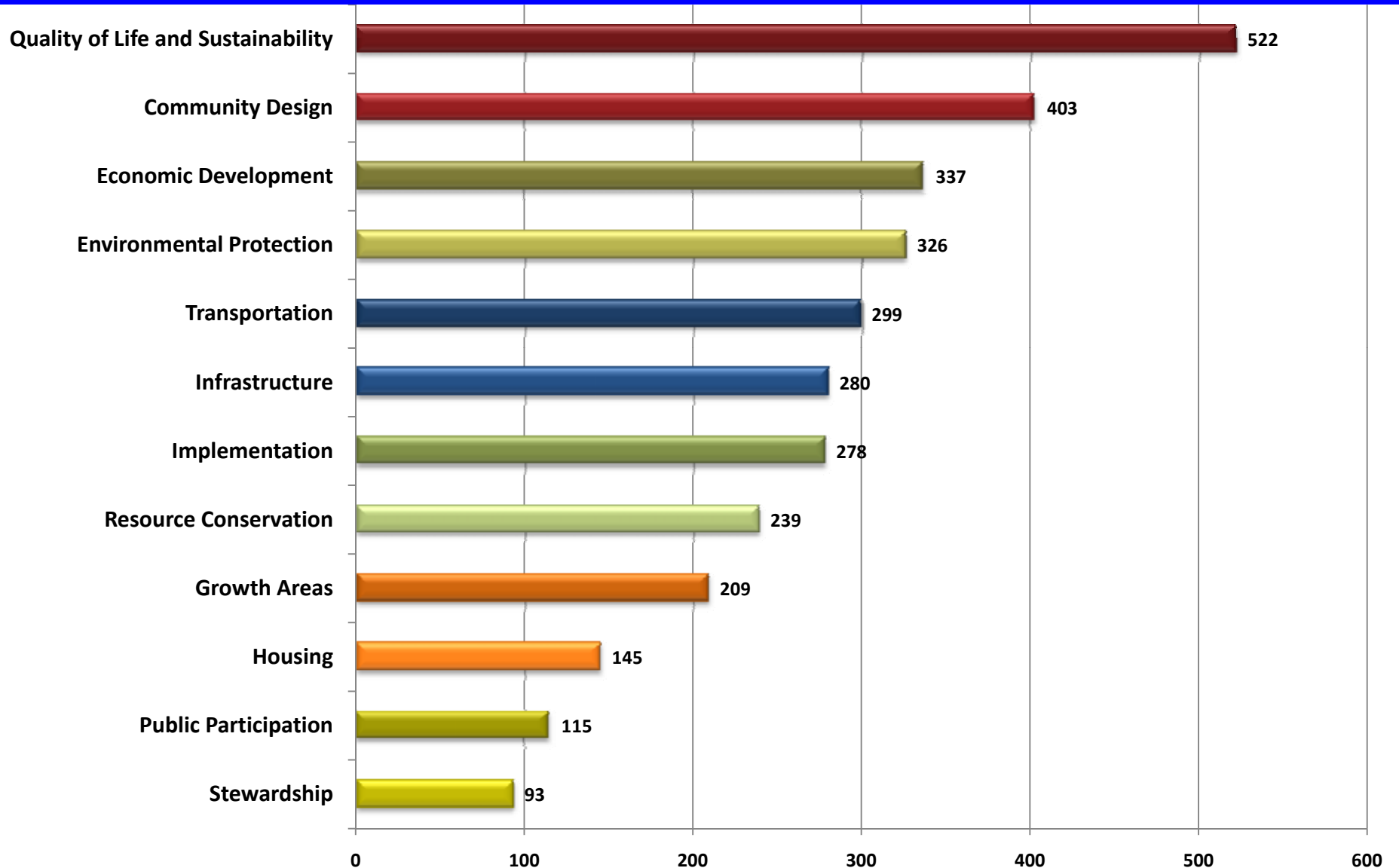


PlanMaryland – Progress to-date

- **Publications**
 - What is PlanMaryland?
 - Why is PlanMaryland Needed?
 - PlanMaryland: What We're Hearing
- **Outreach – 1,600+ reached face to face so far at:**
 - Listening Sessions, 2008
 - Stakeholder interviews, 2009-2010
 - 13 PlanMaryland Public Forums, 2010
 - Meetings with chambers of commerce, ethnic commissions, and student groups



Vision Rankings at Spring 2010 Forums



Process for Completing PlanMaryland

Next Steps:

- Interagency collaboration
- State, local, NGO collaboration
- Draft recommendations
- Public outreach
- Final plan document



Visit Plan.Maryland.gov



More than 500
followers on Facebook
at [www.facebook.com/
plan.maryland](http://www.facebook.com/plan.maryland)

More than 500
followers on Twitter at
[www.twitter.com/
SmartGrowthMD](http://www.twitter.com/SmartGrowthMD)

