



New Castle County, Delaware

# *Comprehensive Plan Update*



# 2012 COMPREHENSIVE DEVELOPMENT PLAN UPDATE



## THE TEN PRINCIPLES OF SMART GROWTH



- Encourage a variety of transportation choices.
- Encourage and create mixed land use. Historically, communities are comprised of a variety of residential types, shopping, civic and employment uses.
- Create a range of housing choices and opportunities.
- Create walkable neighborhoods.
- Encourage community and stakeholder collaboration.
- Foster distinctive, attractive communities with a strong sense of place.
- Make development decisions predictable, fair and cost effective.
- Preserve open space, farmland, natural beauty and critical environment areas by focusing compact development in targeted areas.
- Strengthen and direct development towards existing communities and where infrastructure exists or is planned.
- Take advantage of compact building design and efficient transportation design.

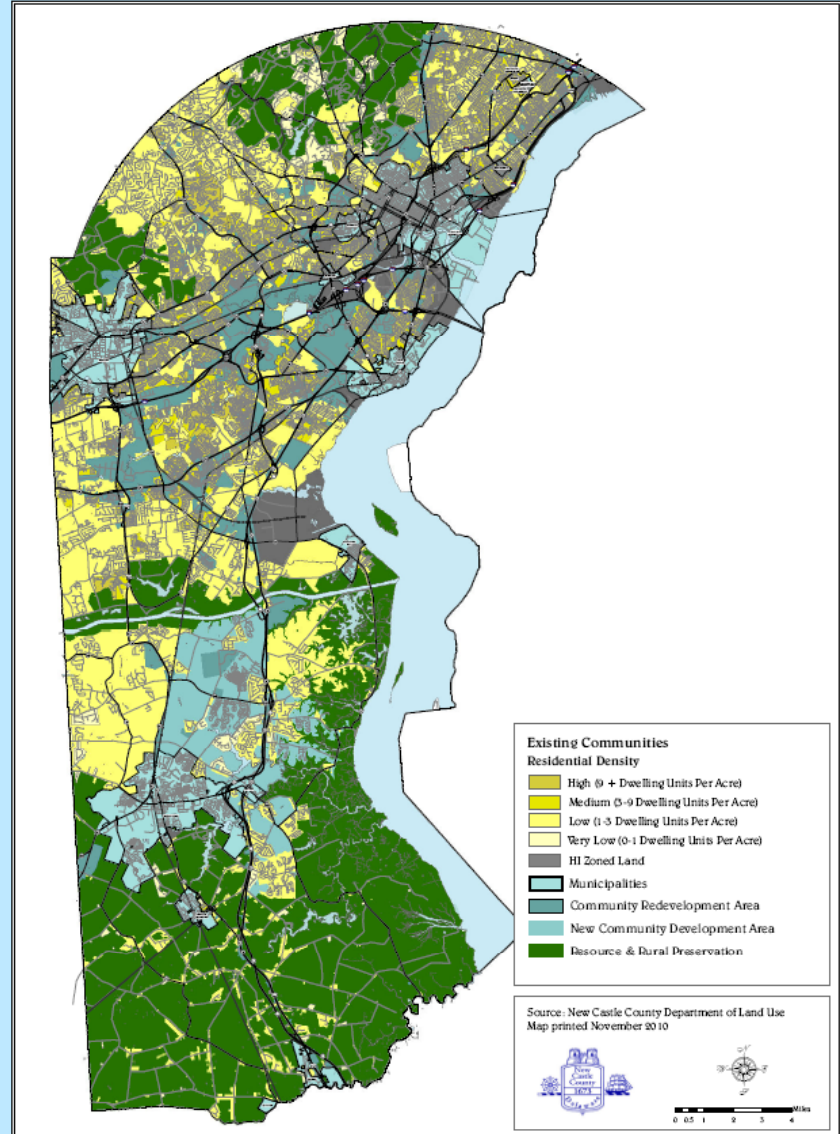


New Castle County, Delaware

# Comprehensive Plan Update



## NEW CASTLE COUNTY, DELAWARE - FUTURE LAND USE PLAN



New Castle County, Delaware

# Comprehensive Plan Update



IT'S TIME TO TAKE ANOTHER  
LOOK AT HOW NEW CASTLE COUNTY  
IS CHANGING AND WHAT GOALS  
WE SHOULD PURSUE FOR THE FUTURE!

## 2012 COMPREHENSIVE DEVELOPMENT PLAN UPDATE

**JOIN US FOR THE  
KICK-OFF MEETING!**

**Date: Thursday, December 2, 2010**

**Time: 7 – 9 p.m.**

**Location: Community Meeting Room**



**Gilliam Building**

**77 Reads Way**

**New Castle Corporate Commons**