

2040 Regional Transportation Plan

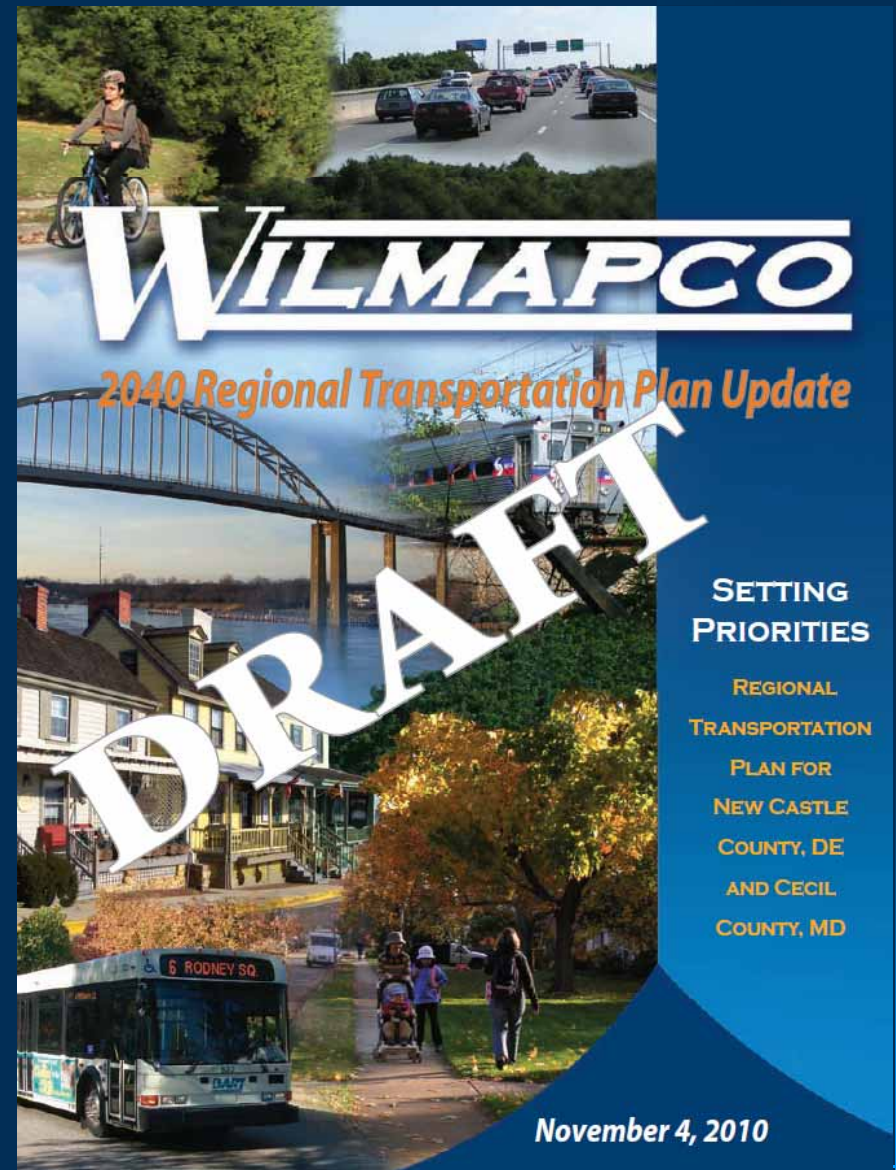
Improve
Quality
Of Life

Efficiently
Transport
People

Support Economic
Growth, Activity,
and Goods
Movement

Our Town

November 17, 2010



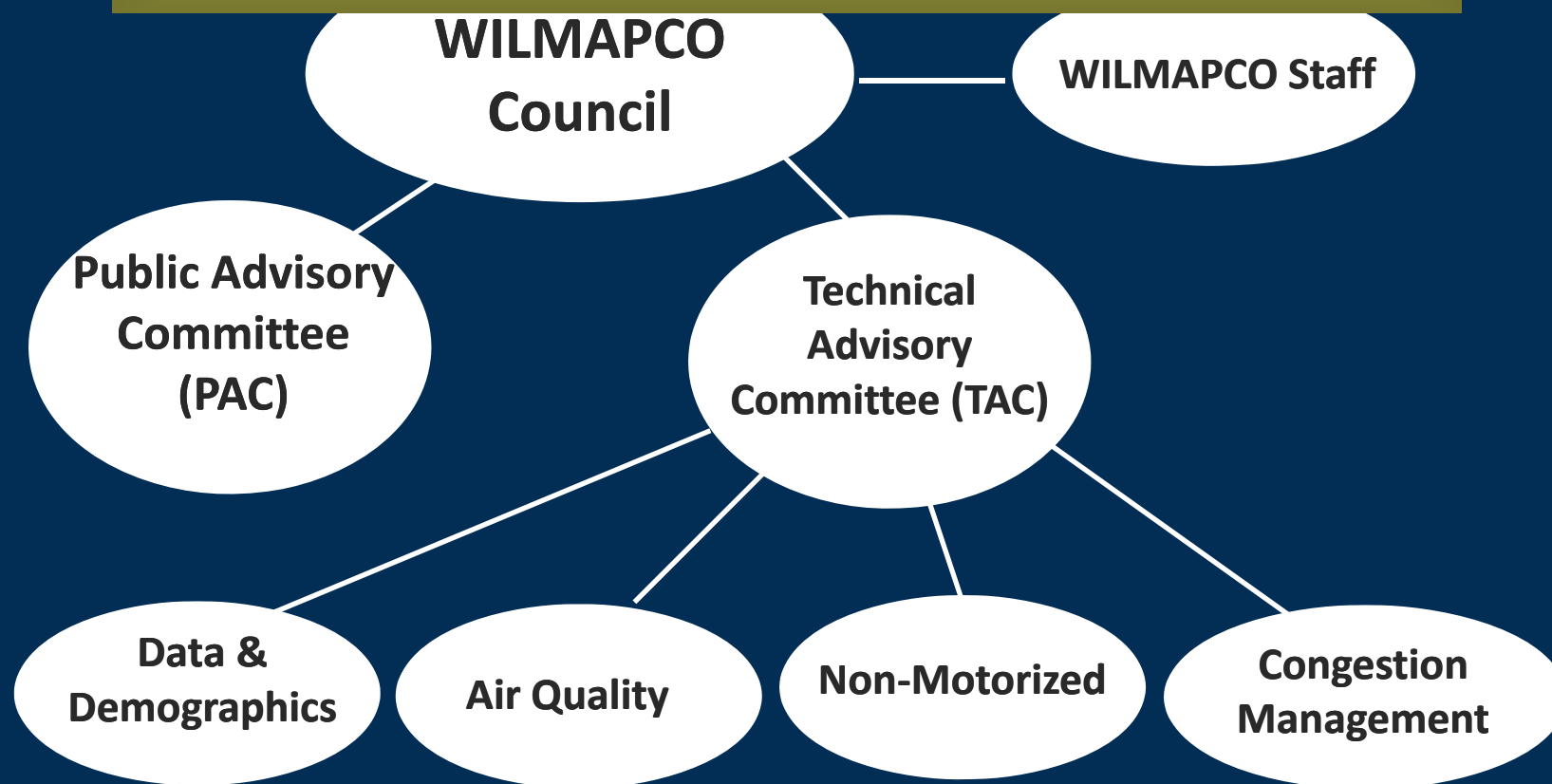
Who is WILMAPCO?

- Metropolitan Planning Organization (MPO):
 - New Castle County, Delaware
 - Cecil County, Maryland
- Federally designated for regional transportation planning



Who is WILMAPCO?

PUBLIC



Community Outreach
ongoing

**Unified
Planning
Work
Program**

*1 year plan
updated annually*

**Regional
Transportation
Plan**

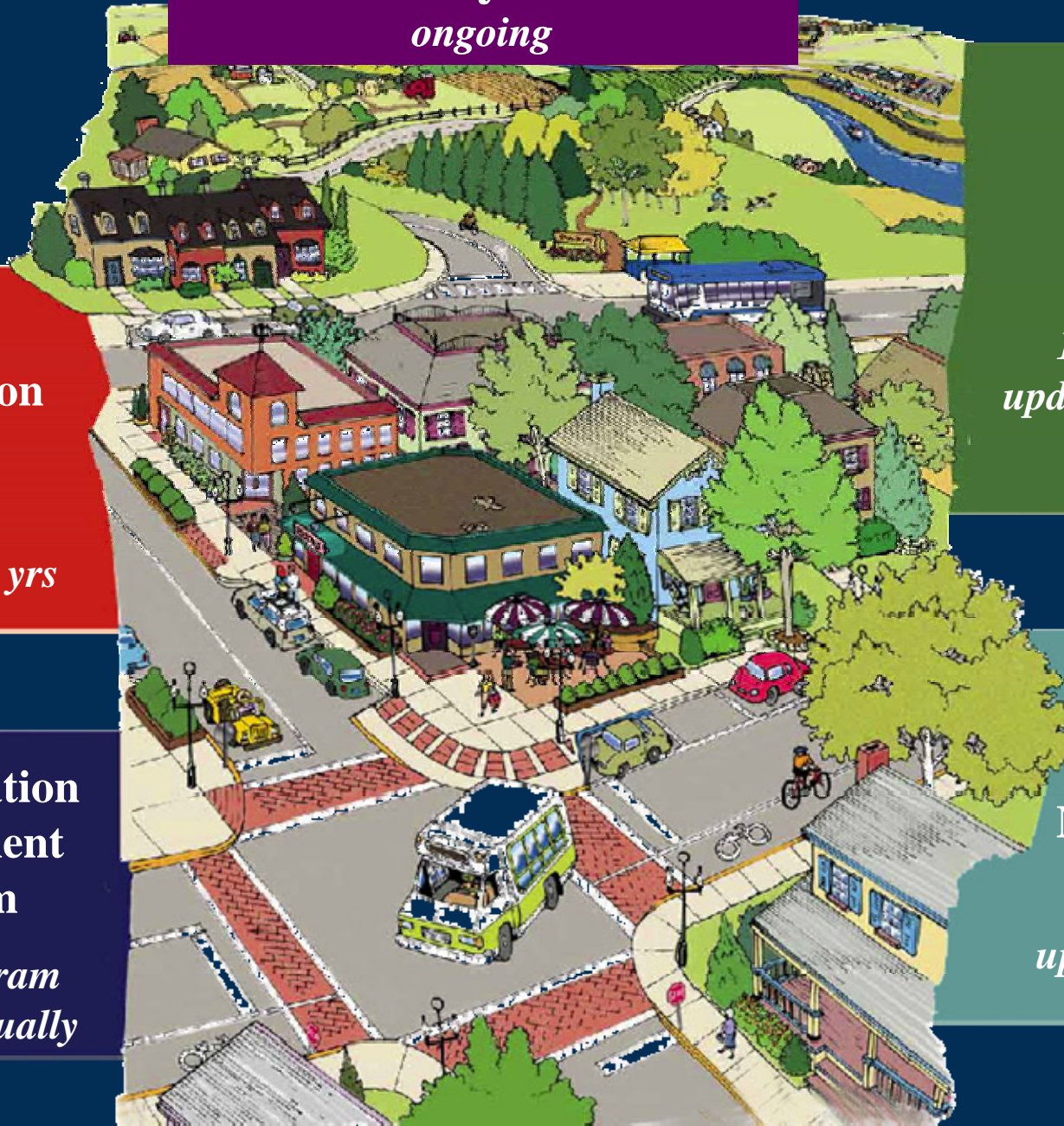
*20 year plan
updated every 4 yrs*

**Transportation
Improvement
Program**

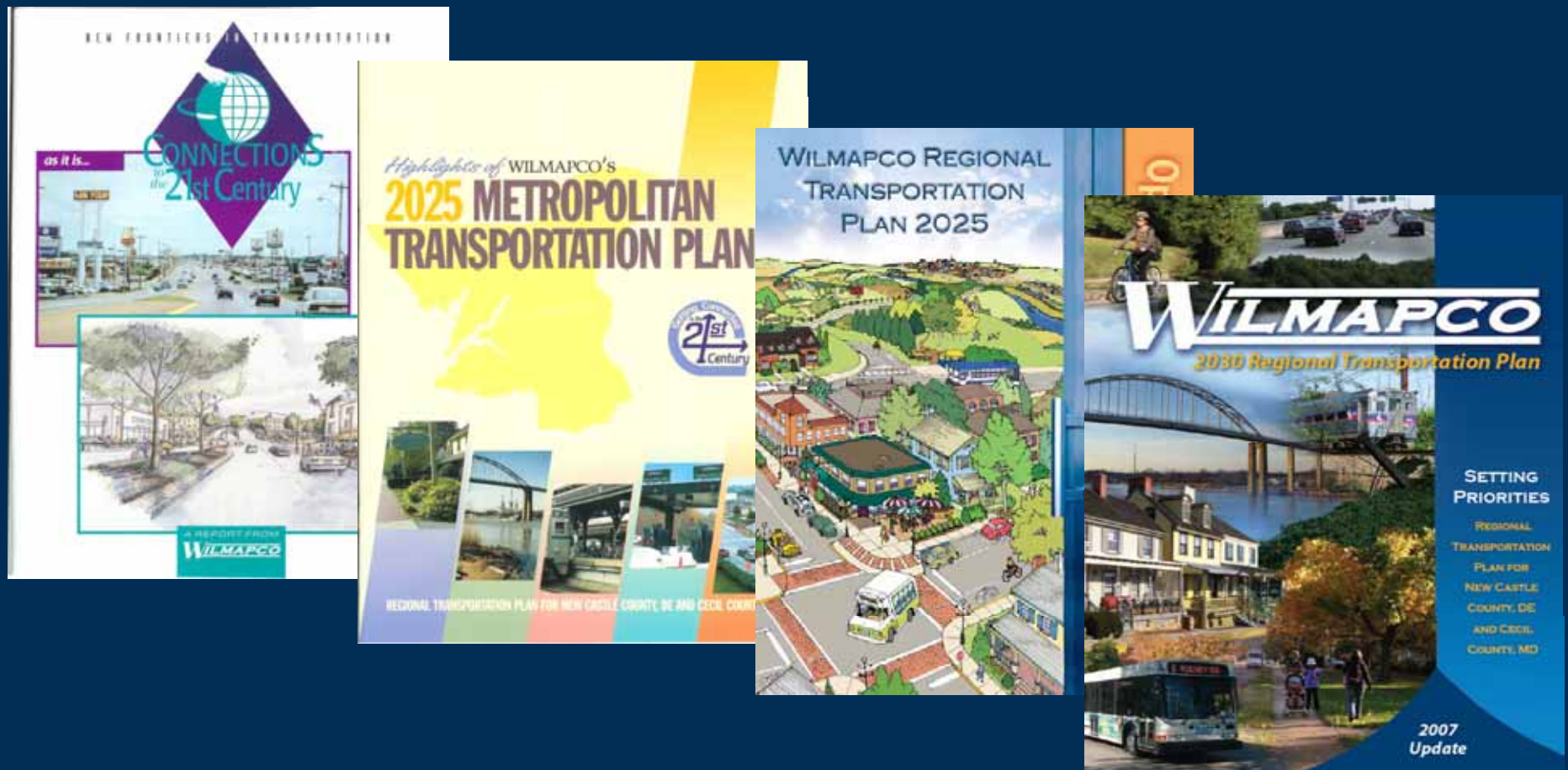
*4 year program
updated annually*

**Congestion
Management
System**

updated annually



Building on 15 Years of Progress



Why are we Updating the Plan?

- Current Plan expires March 2011
- Adopt new Plan every 4 years
 - 20-year planning horizon (SAFTEA-LU)

Therefore, WILMAPCO must:

- Adopt new Plan that goes beyond 2030
- Complete prior to March 2011

Current Federal Guidance

- Still working under SAFETEA-LU continuing resolutions (expires Dec. 2010)
- Unclear on MPO requirements in new legislation
 - Changes in MPO roles and responsibilities



Our Path Forward

- Hold off on major plan modifications
- “Summary-style” update

Update to include:

- Review of core 2030 Plan goals/strategies
- Regional challenges
- Tracking progress toward RTP goals
- Updated financial plan and project list
- AQ conformity
- New initiatives



2040 RTP Goals & Objectives

Goal – Improve Quality of Life

Objectives

1. Protect the Public Health, Safety, and Welfare
2. Preserve our Natural, Historic, and Cultural Resources
3. Support Existing Municipalities and Communities
4. Provide Transportation Opportunity and Choice

Goal – Efficiently Transport People

Objectives

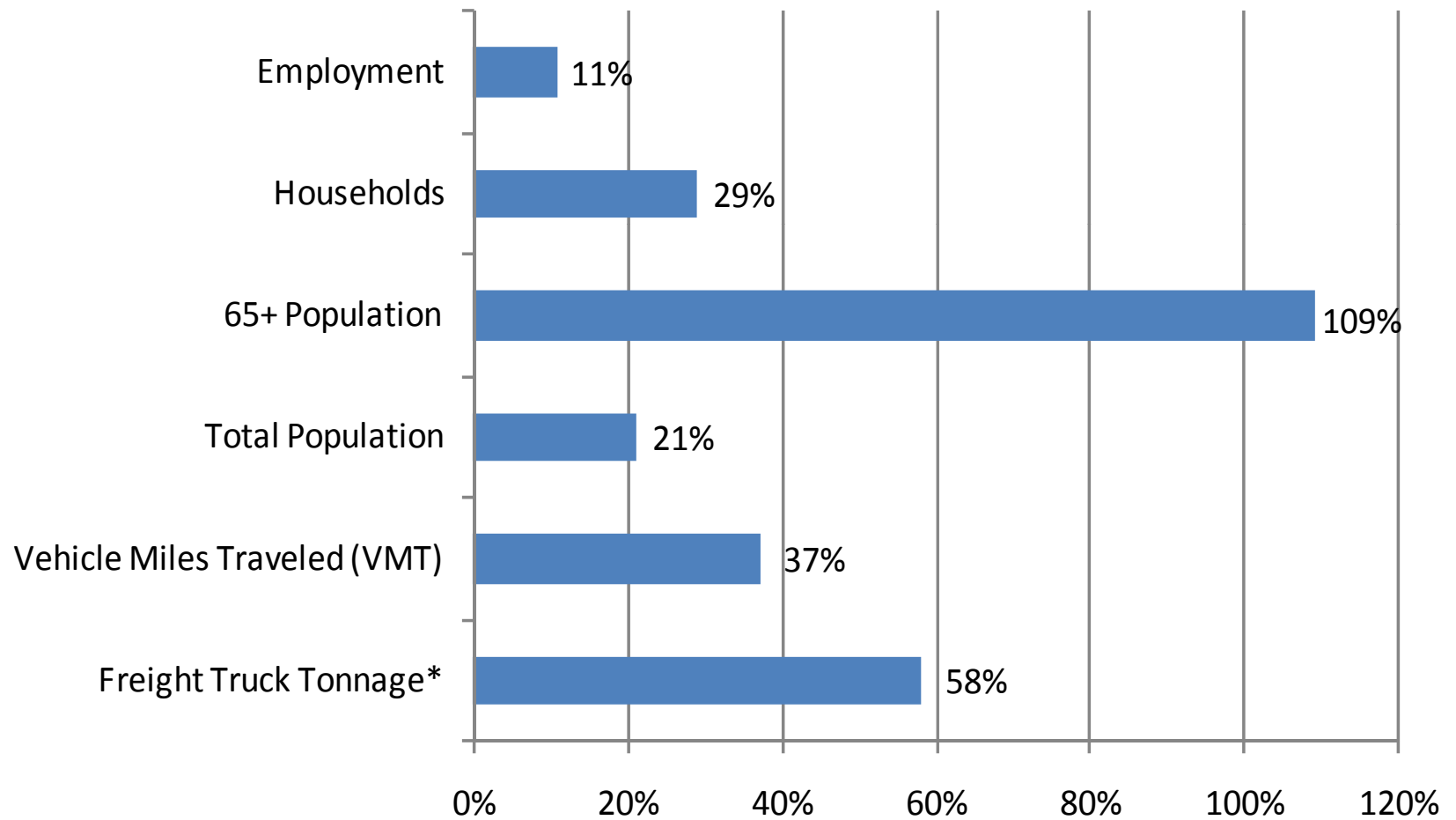
1. Improve Transportation System Performance
2. Promote Accessibility, Mobility, and Transportation Alternatives

Goal – Support Economic Growth, Activity and Goods Movement

Objectives

1. Ensure a Predictable and Adequate Public Investment Program
2. Plan and Invest to Promote the Attractiveness of the Region

Regional Challenges



*Projections out to 2030

Regional Challenges

- Financing the transportation system
- Increased demand for goods movement
- Addressing increased inter-regional strains
- Creating alternatives to the automobile
- Meeting the needs of our aging population



Regional Challenges

- Supporting traditional communities
- Improving our air quality
- Demographic changes
- Preserving our Infrastructure
- Changing economic landscape



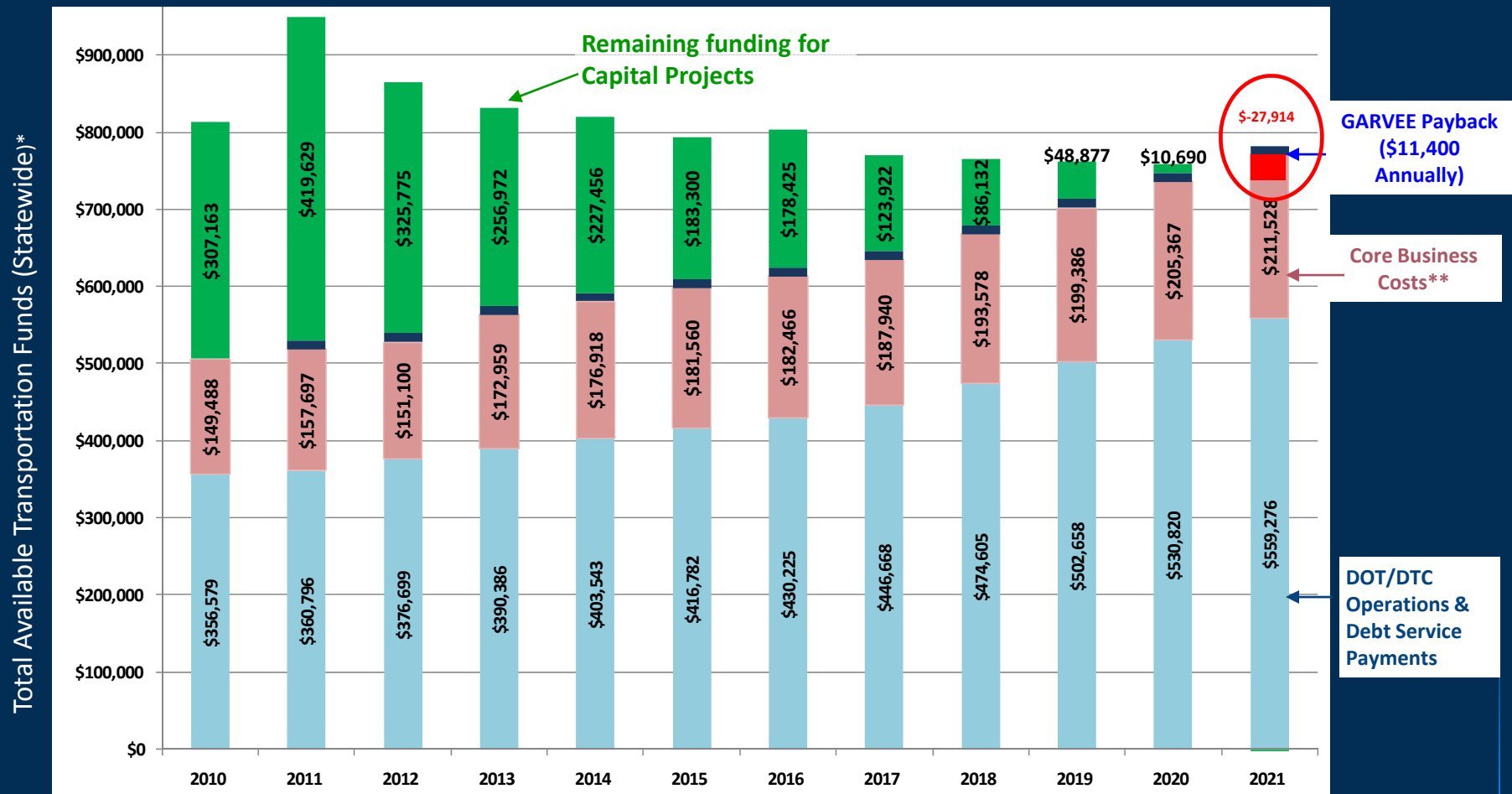
Tracking Progress

- 2009 Regional Progress Report
- Relates trends to Plan's objectives
- Performance-based planning in upcoming legislation



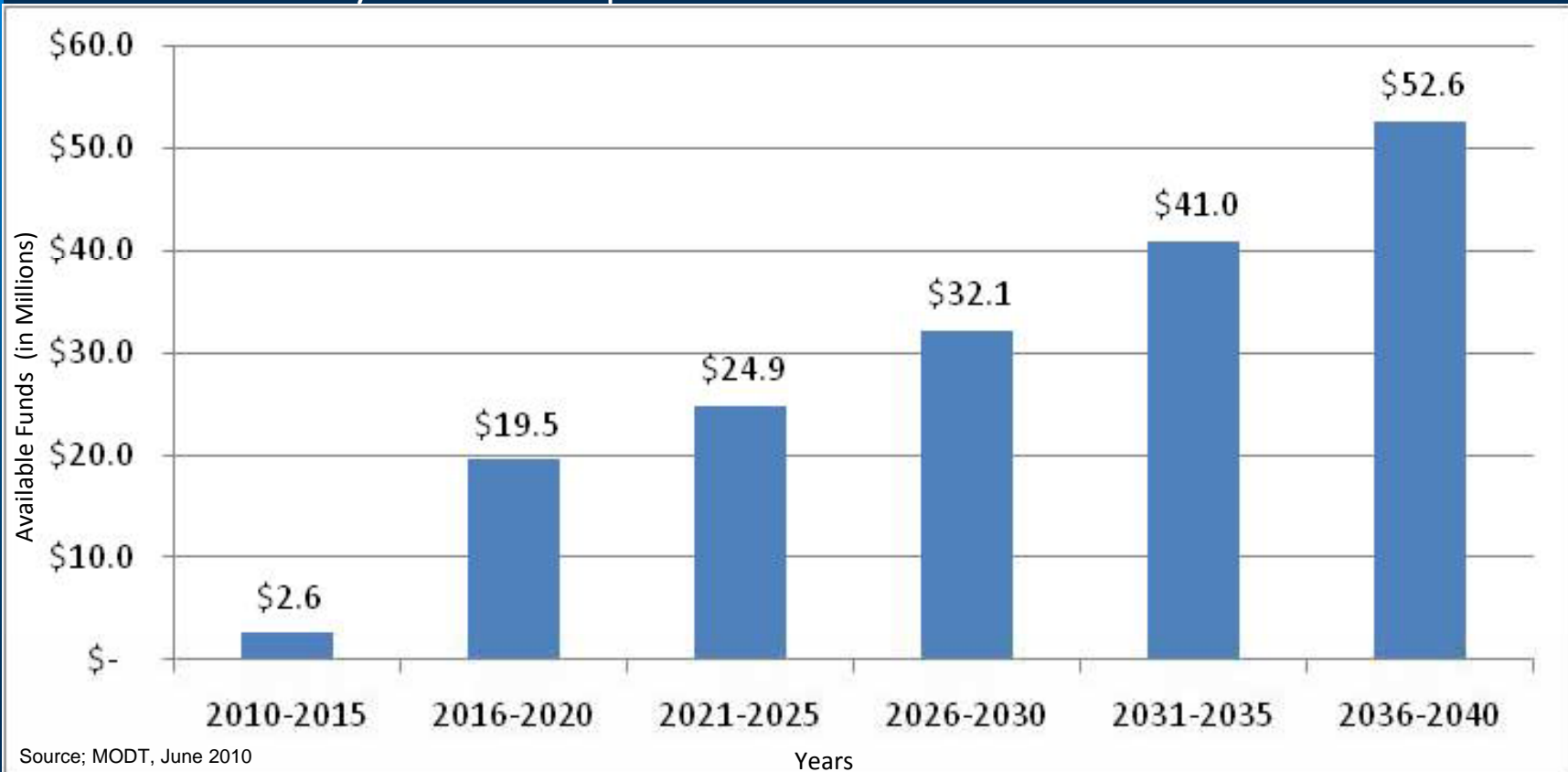
RTP Projects/Financial Outlook

Delaware Capital Transportation Funding Outlook FY 2010-2021

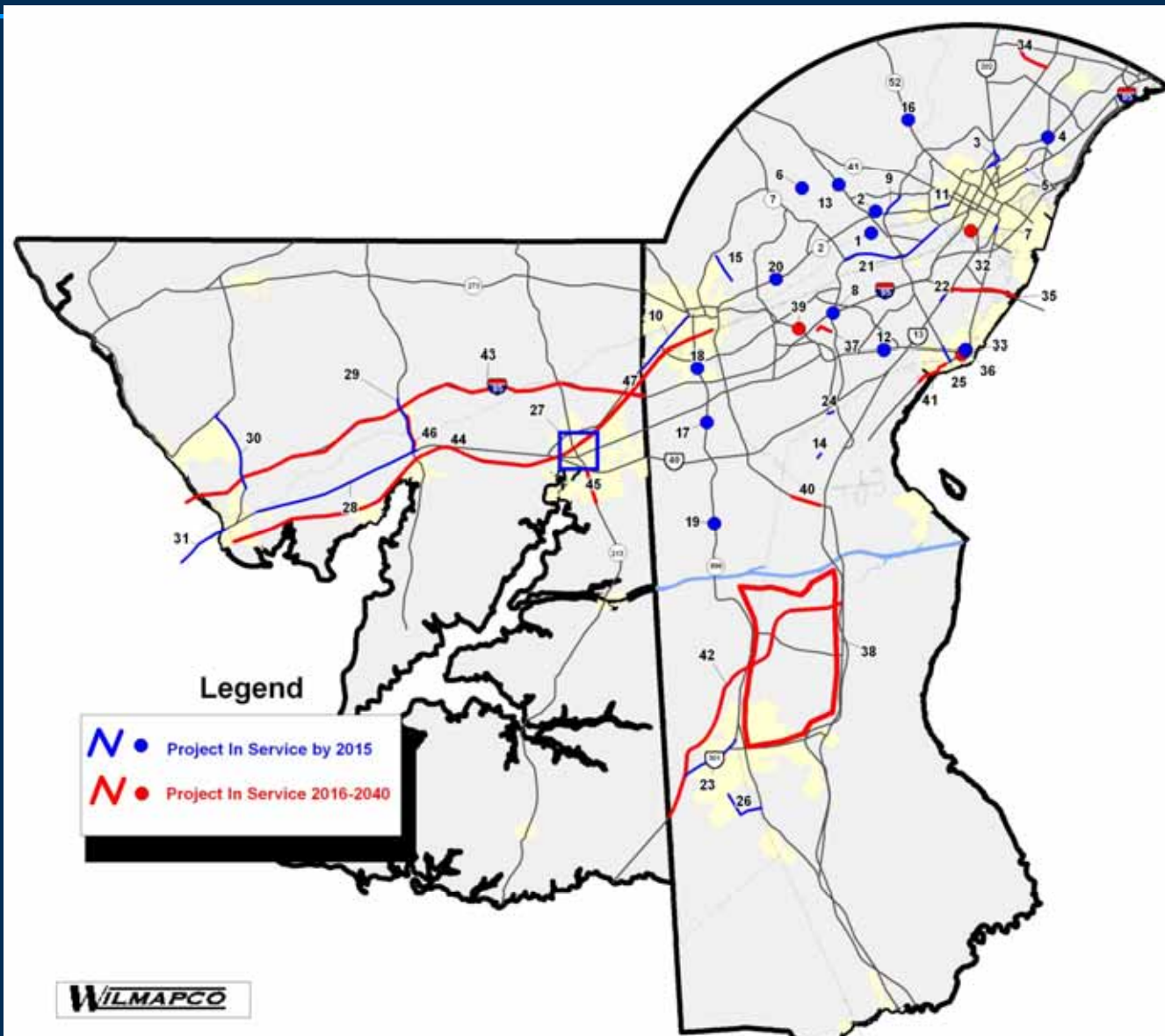


RTP Projects/Financial Outlook

Cecil County: Available Expansion Funds Outlook FY 2010-2040



RTP Projects/Financial Outlook



NOTE: Will include updated aspirations list in Appendix

AQ Conformity

- Must show current list of projects meets PM2.5 and Ozone standards
- NCC is considered in non-attainment for PM2.5 Cecil and NCC in moderate non-attainment for ozone
- Conformity has been demonstrated



Livability

- Federal Livability Principals
 - Provide more transportation choices
 - Promote equitable, affordable housing
 - Increase economic competitiveness
 - Support existing communities
 - Leverage federal investment
 - Value communities and neighborhoods
- The RTP *is already* a Plan for livability

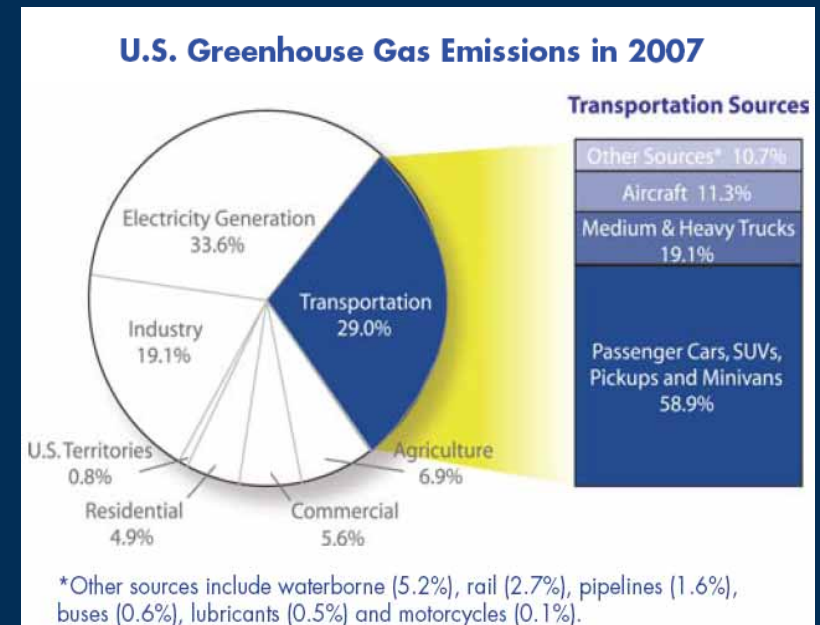
Livability

- Championing new investment
 - Newark Train Station Redevelopment (\$2.25 million)
- Rail Planning
 - Claymont (station)
 - Newport (TOD and station)
 - Newark (TOD and station)
 - Elkton (TOD)
 - Perryville (TOD)
- Safe Routes to School Planning
 - Claymont Elementary, Elbert-Palmer Elementary, Edison Charter



Energy Use/Climate Change Mitigation

- Existing RTP Objectives
 - Smarter land use
 - Greater transit investment
 - Boosting ride-sharing
 - Easing highway congestion
- Future RTP Objectives
 - VMT reduction goal
 - Support cleaner fuels and technologies
 - See Section 6 for complete list



Source: FHWA

Climate Change Adaptation

- Sea-level Rise Transportation Vulnerability Assessment
 - Inform and influence adaptation planning
 - Identify at-risk existing/planned infrastructure
 - Address climate change ahead of federal regulations
 - Continue work of Delaware and Maryland
 - Release expected by Summer 2011



Photo: Peggy Schultz

Intermodal Systems

- National Rail Plan
 - Increase passenger/freight reliability
 - Create complementary transportation system
 - Identify nationally-significant projects
 - Develop high-speed passenger rail service
 - Increase economic competitiveness
- Coordination with Airports
- National Freight Corridors
- Marine Highway Program



[illegible]

Responses from the **WILMAPCO Council**