

Envision a transit-ready North East...

North East Transit Oriented Development Plan

Please join us

NORTH EAST TRANSPORTATION PLANNING WORKSHOP

December 11, North East Town Hall

5 – 6:30 p.m. Open House Workshop

7 p.m. Presentation at Town Board meeting

We invite you to the third Public Workshop to shape the future of downtown North East. During this interactive event, we will present revised draft concepts and release the draft document for community comment.

The concerns and ideas you expressed at prior meetings were the basis for the draft recommendations for future bus transit, commuter rail service and surrounding land uses. Since the second Workshop last February, the project team has worked with the Town and Advisory Committee to narrow the original three sites to a preferred potential location, refined recommendations and drafted the report.

Visit between 5 p.m. and 6:30 p.m. at your convenience, to discuss ideas for the Plan and make comments to the project team. A presentation will be made at 7 p.m. during the meeting of the Mayor and Commissioners, followed by question & answer and discussion.

Suggested future train station/transit hub

As it is



As it could be



For information:

Call 302.737.6205 or toll free from Cecil Co. 888.808.7088

Or visit www.wilmapco.org/NorthEast

GET INVOLVED

- ❖ Attend the Public Workshop on December 11th, 2013. Come at your convenience between 5 p.m. – 6:30 p.m., or stay for the presentation at 7 p.m. Meeting will be in the North East Town Hall, 106 South Main Street, North East, MD.
- ❖ Call to schedule an individual interview or a presentation to your group.
- ❖ Visit project website at www.wilmapco.org/northeast to learn more or submit your comments.

PROJECT TEAM

This plan is being developed by the WILMAPCO, in partnership with the Town of North East, Cecil County and the Maryland Department of Transportation. WILMAPCO is the regional transportation planning agency for Cecil County, Maryland and New Castle County, Delaware. Throughout the planning process, we will be coordinating with local leadership, land owners, major employers, residents and other interested stakeholders. Outreach and technical support is being provided by KSK Architects Planners Historians, Inc., Pennoni Associates, and Real Estate Strategies.

WHY NORTH EAST?

North East has great TOD potential. Currently along the 460 miles of commuter rail between Richmond, Virginia and New London, Connecticut, there is one major gap: the 20 miles from Perryville to Newark. Filling this gap has been a top local and regional priority. Maryland is promoting transit-oriented development to increase the number of riders and get a better return on transit and rail investment.

WHAT IS TOD?

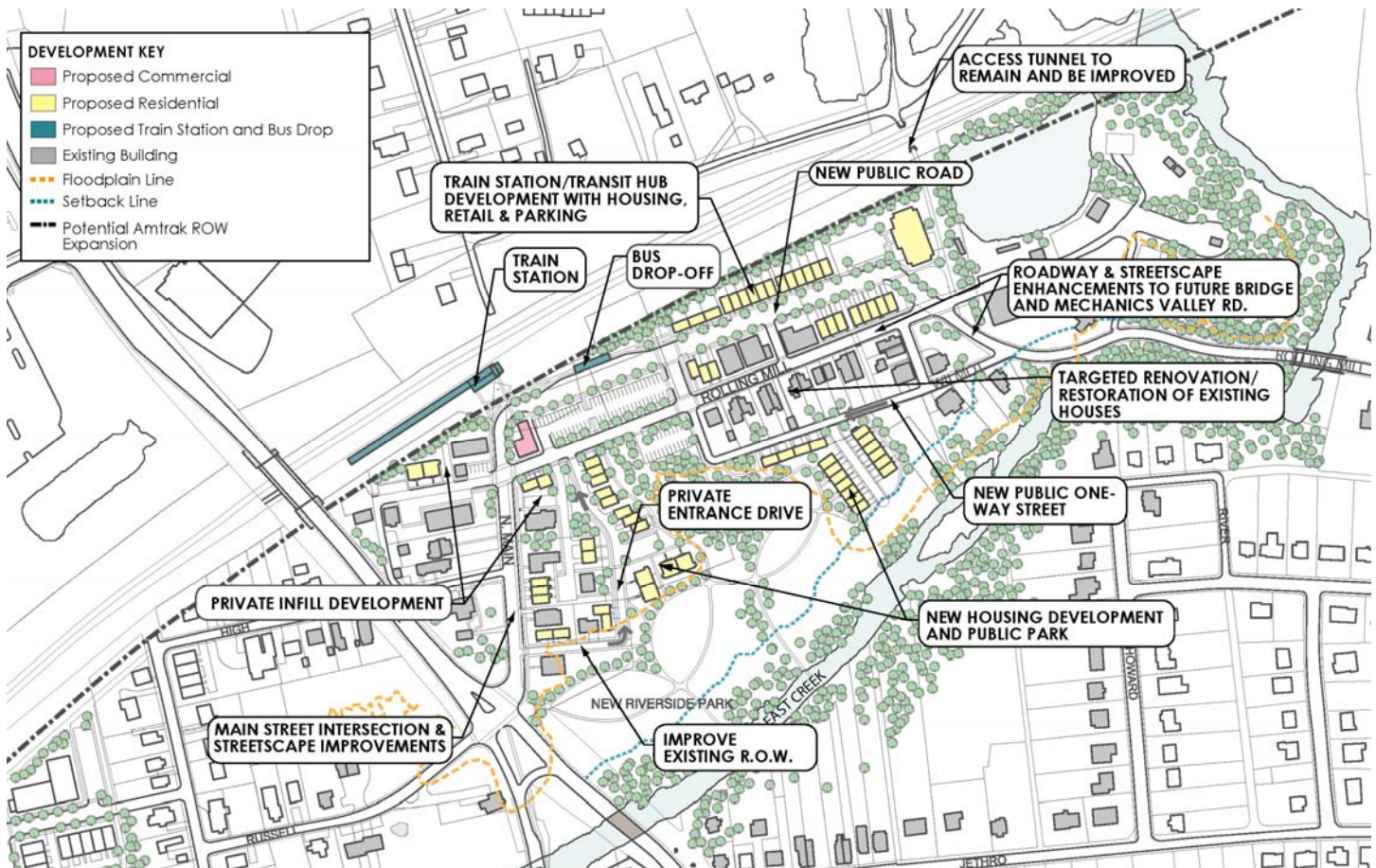
Transit-oriented development (TOD) creates compact, walkable neighborhoods around existing and planned transit. It helps make transit successful by creating many destinations within a short walk, offering convenient access to jobs, shopping, services and recreation.

While TODs come in many sizes and types, successful TODs share a few characteristics:

- ❖ Pedestrian-friendly environment with wide sidewalks, well-marked crosswalks, good lighting and narrow streets to slow traffic.
- ❖ Landscaping, inviting public spaces and interesting architecture to enhance walkability.
- ❖ Greatest density of land use is closest to transit that tapers off as you get farther out.
- ❖ Limited surface parking to efficiently use prime locations closest to transit
- ❖ Shared or structured parking to reduce impact of parking areas.
- ❖ Provides a mix of housing, jobs, shopping and recreation choices.
- ❖ Increases community value for public and private sectors, residents and visitors.
- ❖ There is no one-size-fits-all TOD; design and scale must complement desired community character.

What are we planning?

Through community input, we have identified a location near Rolling Mill Road east of the MD 272 bridge over Amtrak as the preferred TOD site. The draft concept shown below features new private development, improved pedestrian, bicycle and driver access, and new parks and landscaping to support a future train station/transit hub.



Learn more at www.wilmapco.org/NorthEast