

Newport Transportation Study – Public Workshop 1



 **CENTURY
ENGINEERING**

January 27, 2020

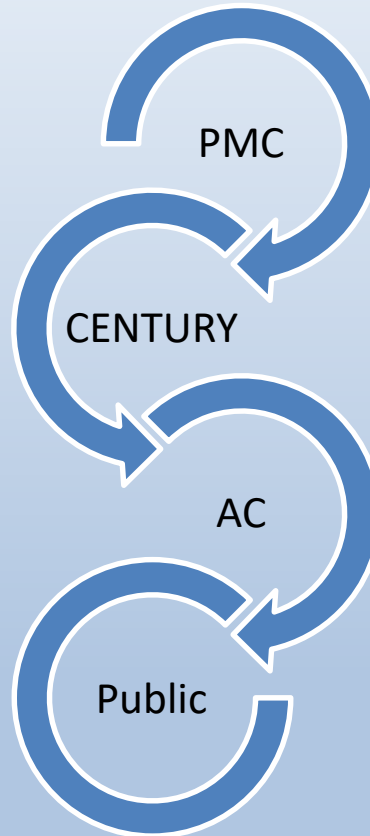
Project Team

PMC

WILMAPCO
DeIDOT
DTC
Town of Newport

AC

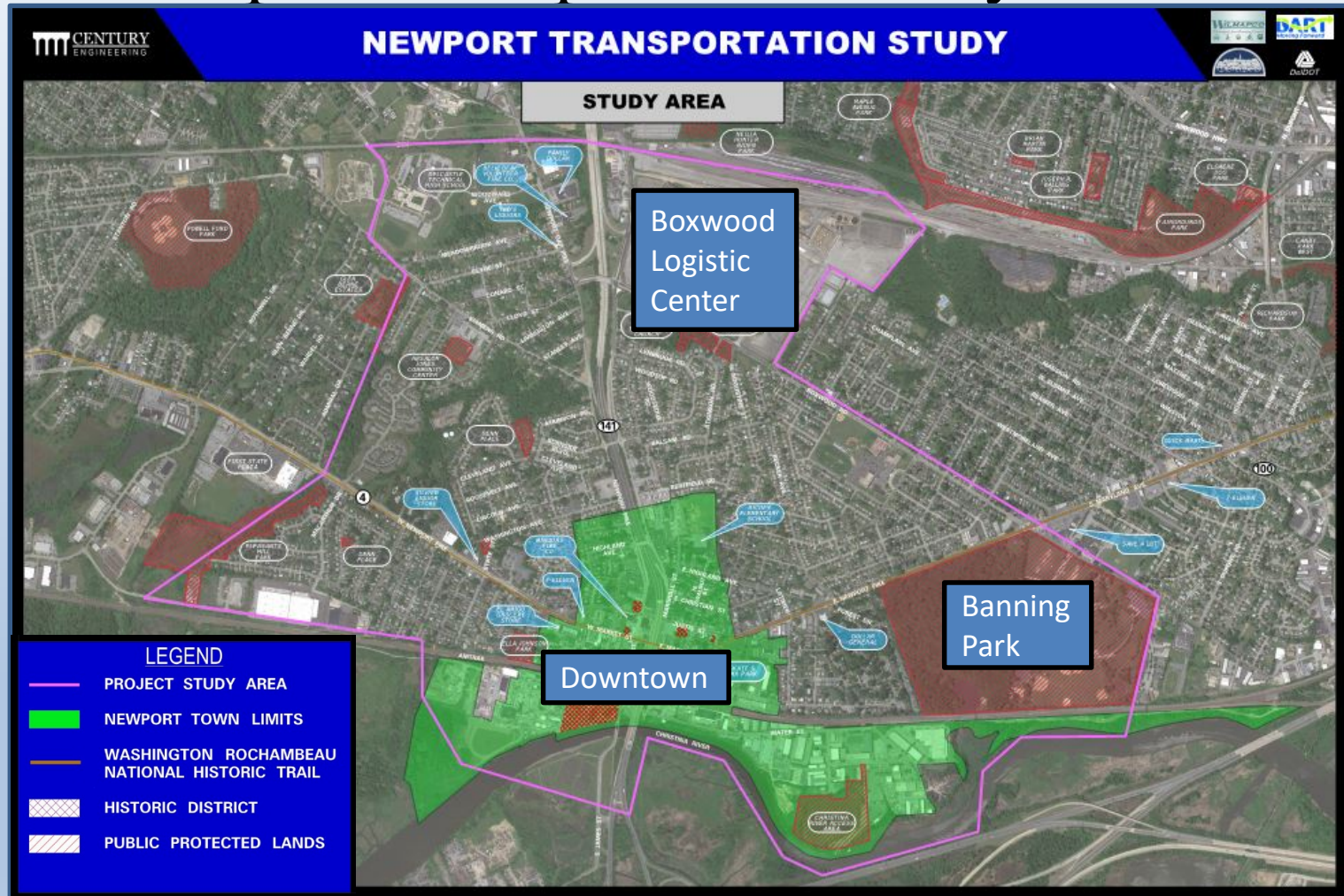
Elected Officials
DNREC
Delaware Office of State
Planning Coordination
New Castle County Land Use
New Castle County Chamber
of Commerce
Harvey, Hanna & Associates
Businesses
Land Owners
Civic Entities
Bike Delaware



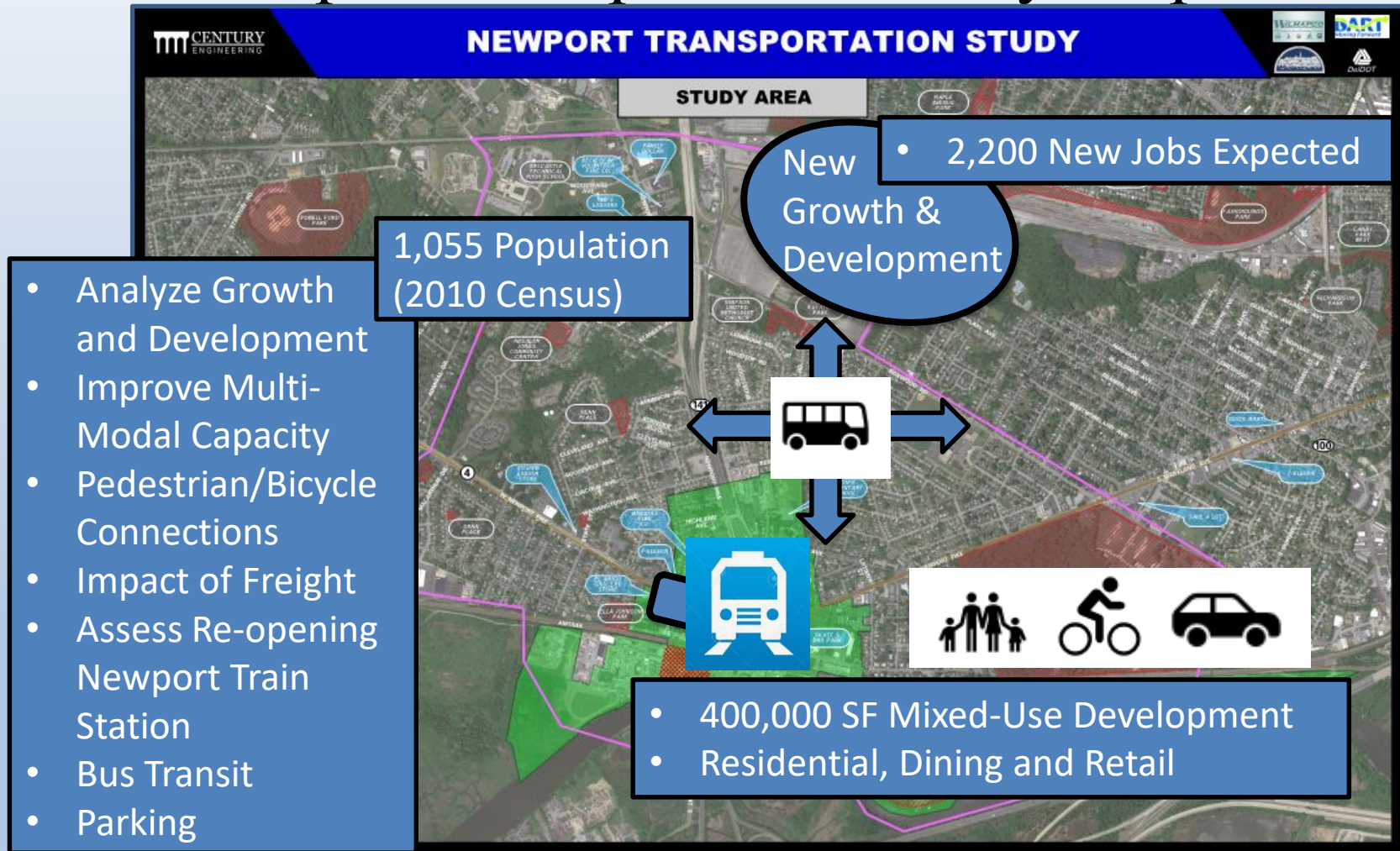
Century

- Local Engineering Consulting Firm
- 30+ Years of Delaware Experience
- Industry Leader in Transportation Planning
- Newark Office – 4 Miles from Project

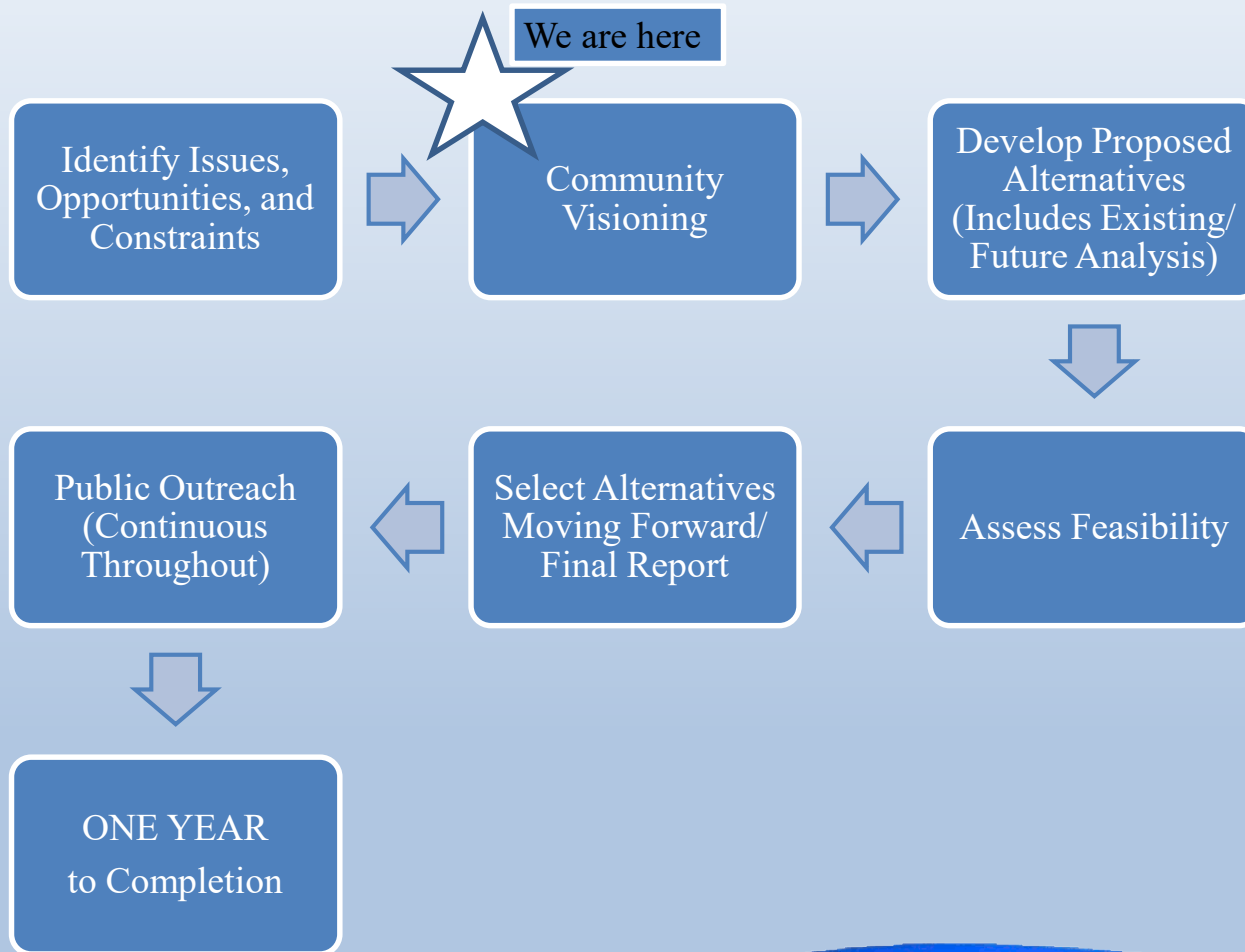
Newport Transportation Study Area



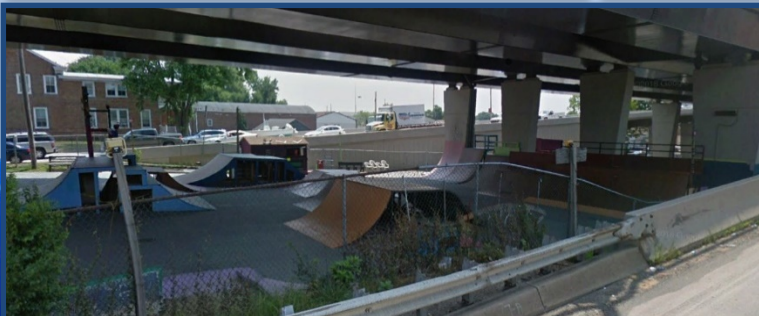
Newport Transportation Study Purpose



Project Work Plan



Newport: A Unique Town

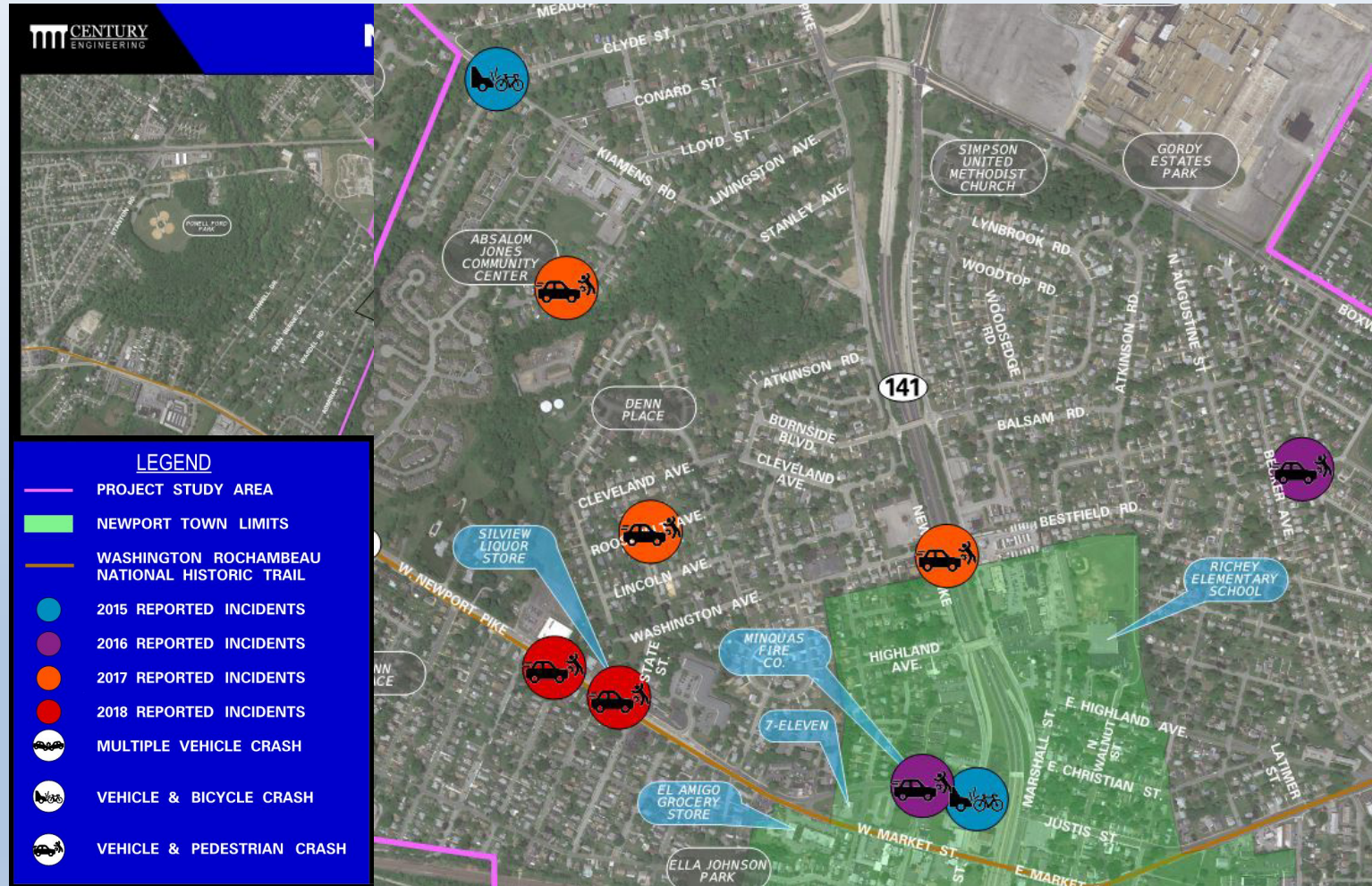


Data Gathering



- Development/Smart Growth
- Walking/Biking Infrastructure
- Multimodal Connections Between Newport and Surrounding New Castle County Areas
- Freight/Development Impacts
- SEPTA Train Station
- Parking

Data Gathering – Reported Incidents

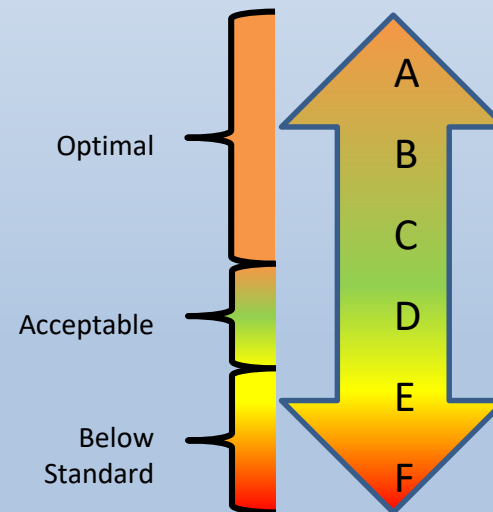


Data Gathering – Level of Service (LOS)

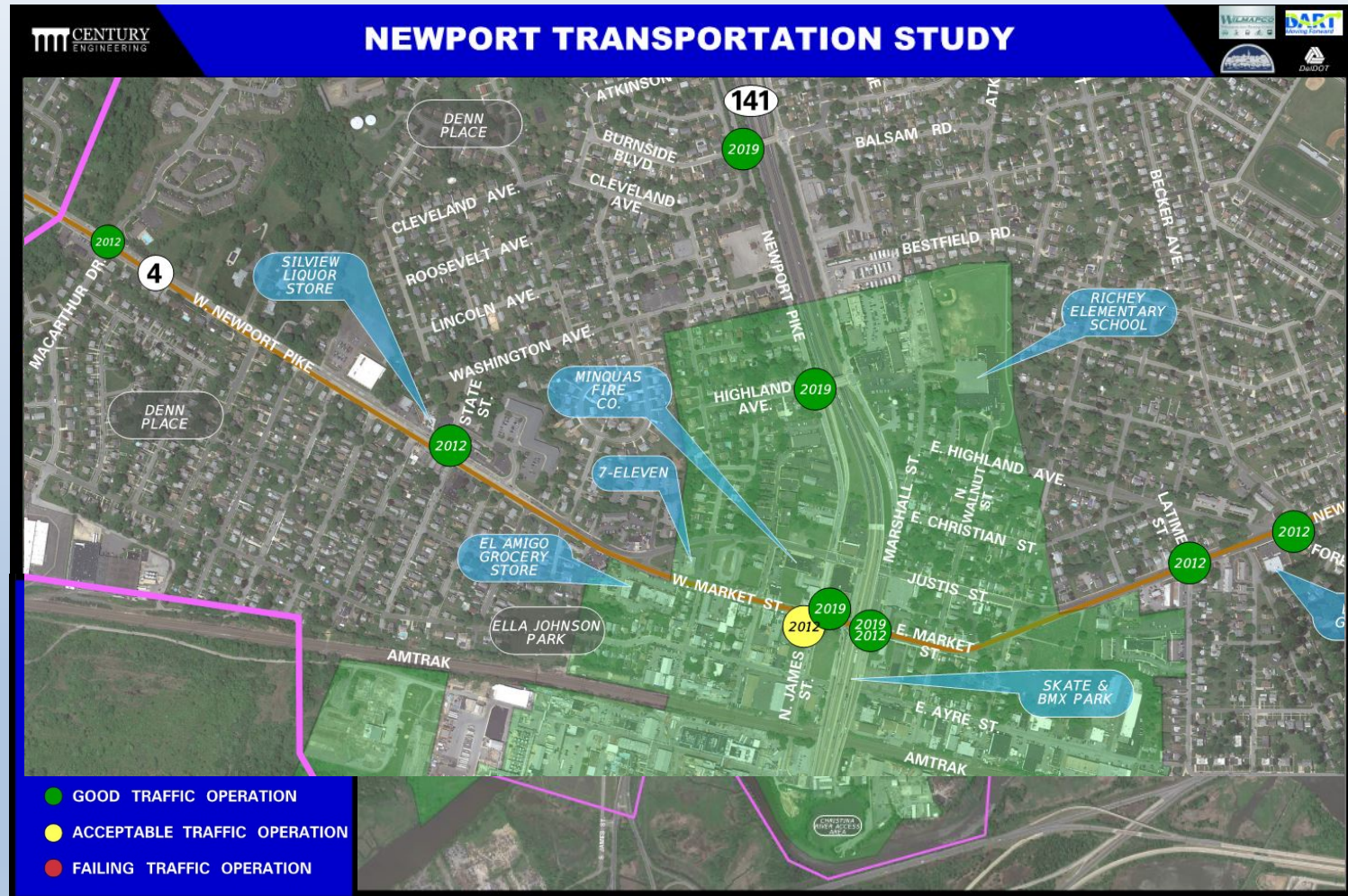
What is Level of Service (LOS)?

LOS measures how well traffic moves along a roadway or through a signalized intersection for all movements. LOS is based on vehicle delay and speed, which reflects the relative ease of traffic flow on a scale from A to F. Level D is the design standard minimum acceptable LOS for peak hour traffic volumes in the Design Year.

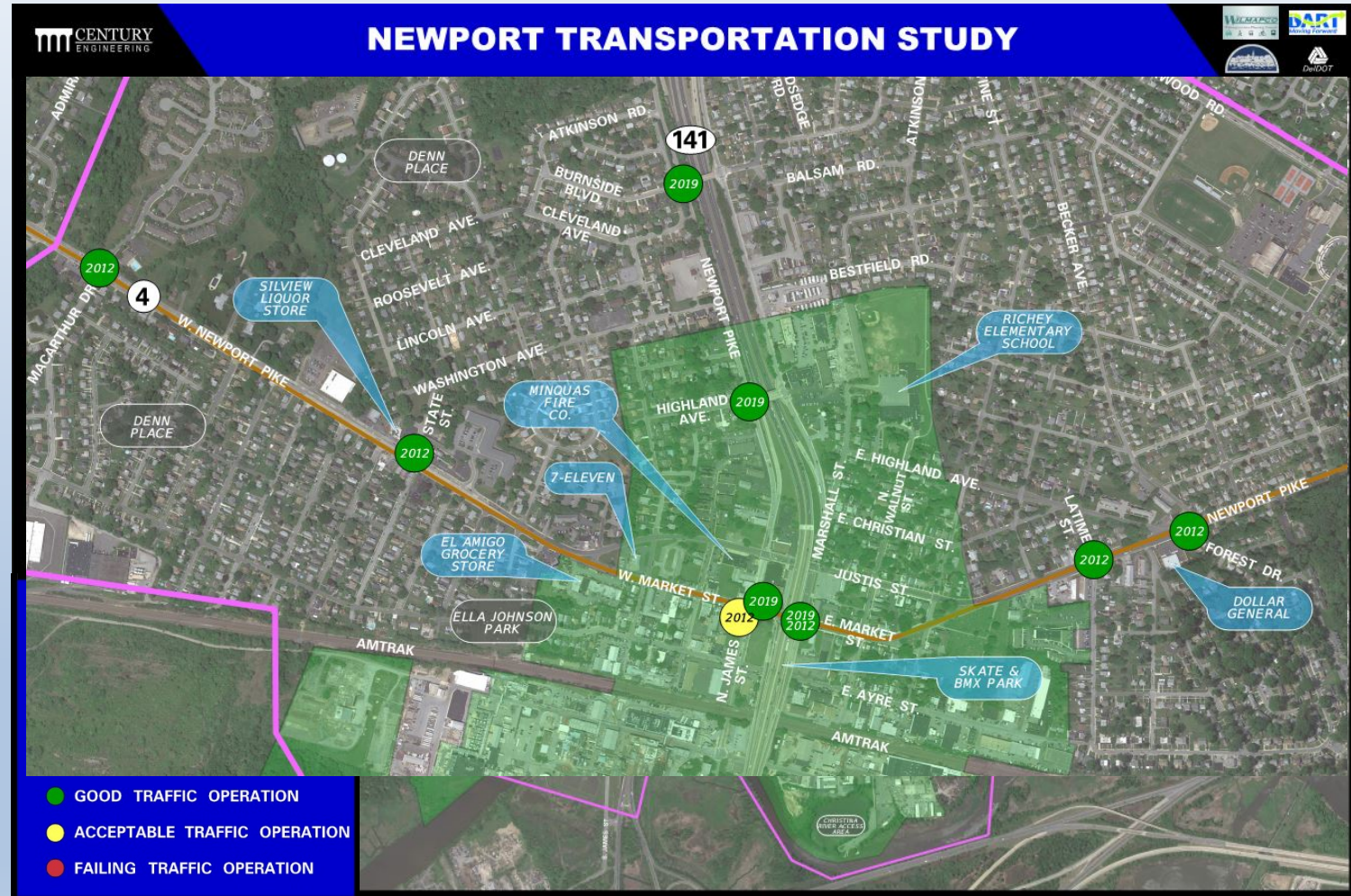
Level	Traffic Condition
A	Free Flow Condition
B	Reasonably Free Flow
C	Stable Flow
D	Approaching Unstable Flow
E	Restricted Flow
F	Highly Congested



Data Gathering – LOS AM



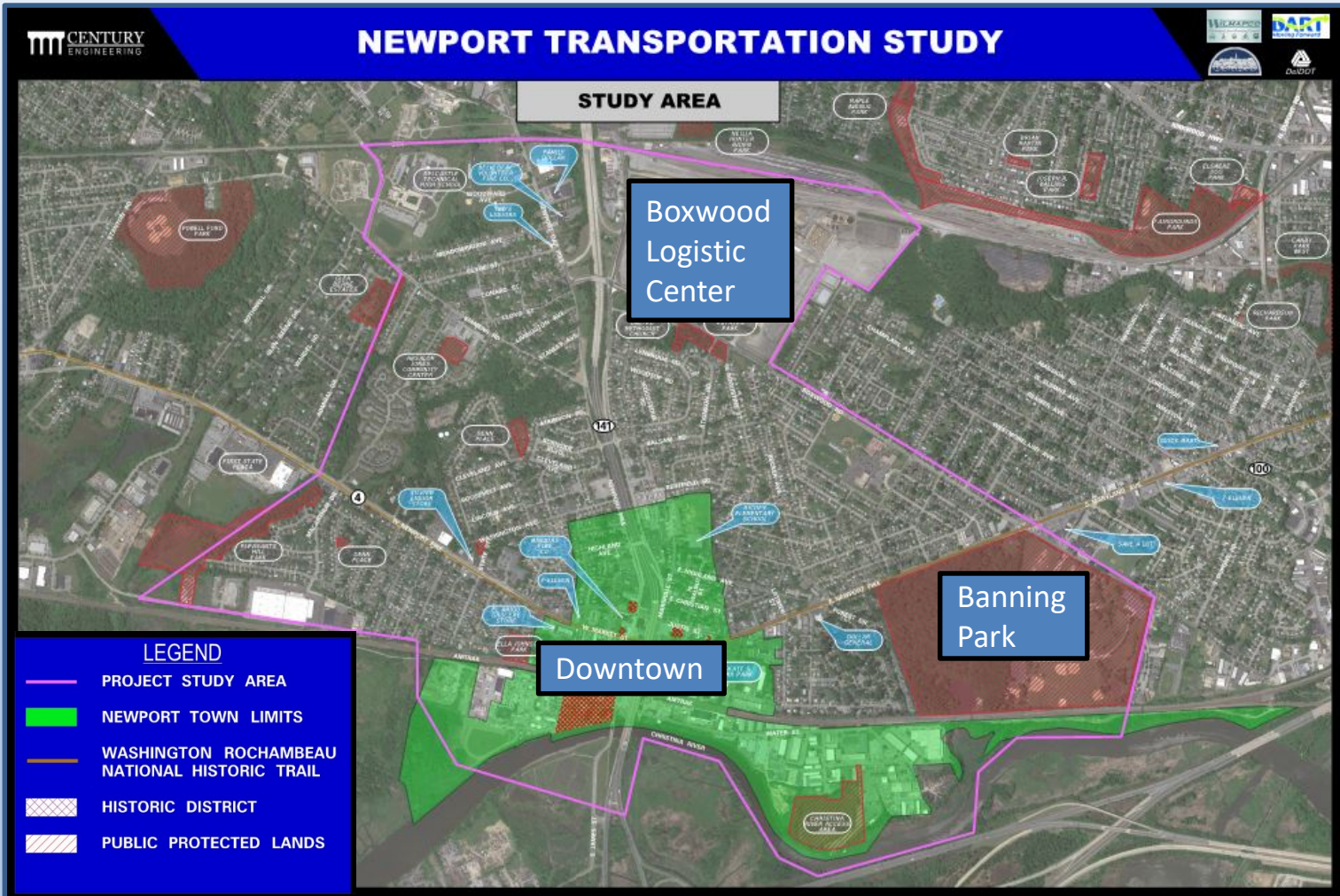
Data Gathering – LOS PM



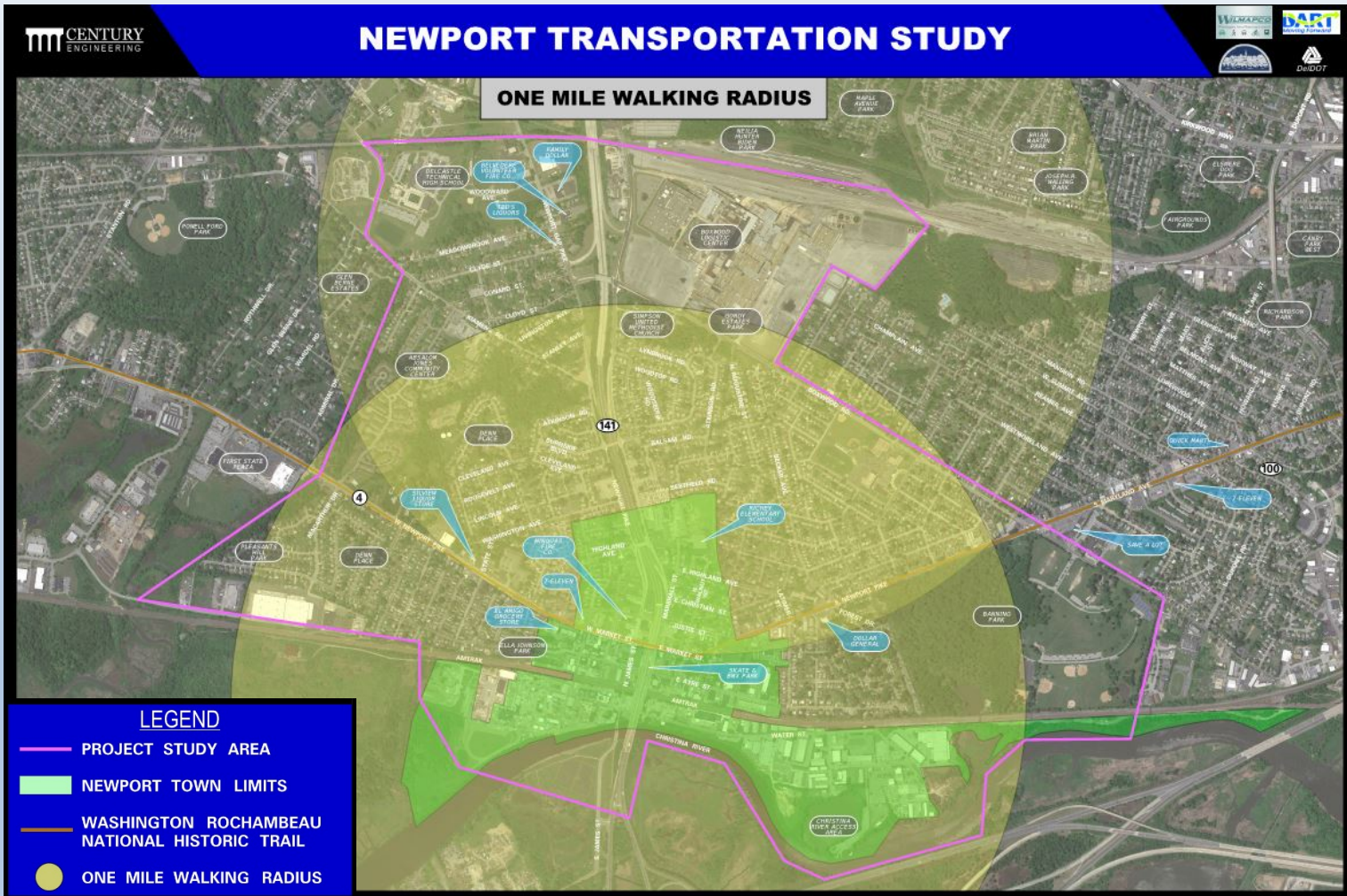
Stakeholder Discussions

We Want to Hear From You

Newport Transportation Study Area

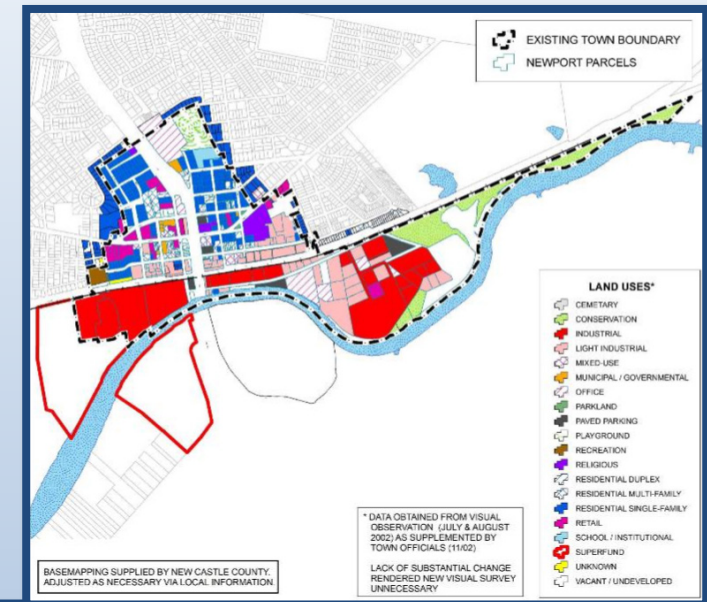


Newport Transportation Study Area



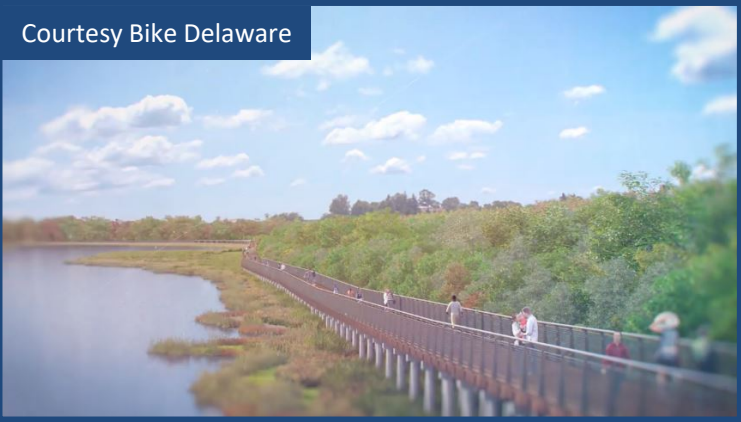
Development & Smart Growth

- Connection to Future Planned Development
 - Regional Logistics Center - Boxwood
 - 400,000 SF Downtown Development
 - SR141 Park & Ride & Parking Lot
- Connections to Underdeveloped/Underserved Areas
 - North Portion of Study Area
 - Banning Park
- Support for Ancillary Ecotourism Opportunities
 - Kayak rentals
 - Birdwatching tours
 - Cycle rentals
- Support Downtown Redevelopment



Multi-Modal Infrastructure

Courtesy Bike Delaware



Courtesy Harvey Hanna

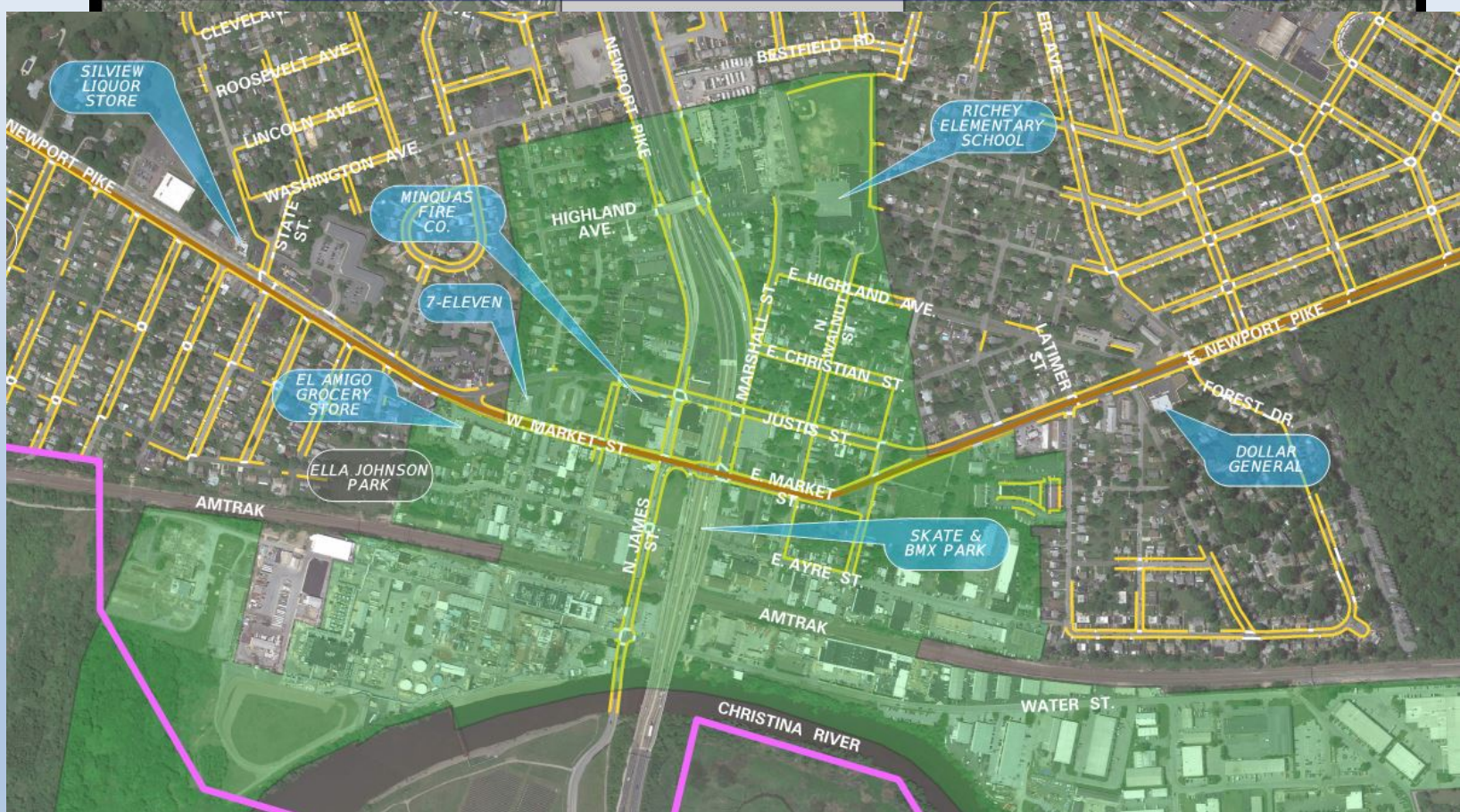


- Bicycle Infrastructure – Bike Lanes, Cycle Tracks, Proper Signage
- Pedestrian Infrastructure – Intersections, Sidewalks, Trails/Walking Paths
- Define Critical Intersections and Mid-block Crossings
- Connections: NCC Trail Network, Train Station, Employment Centers, Retail, Restaurants, Residential
- Newport is 10 Minute Bike Ride to Wilmington Riverfront
- Grade Separated Pedestrian Connections at Train Station

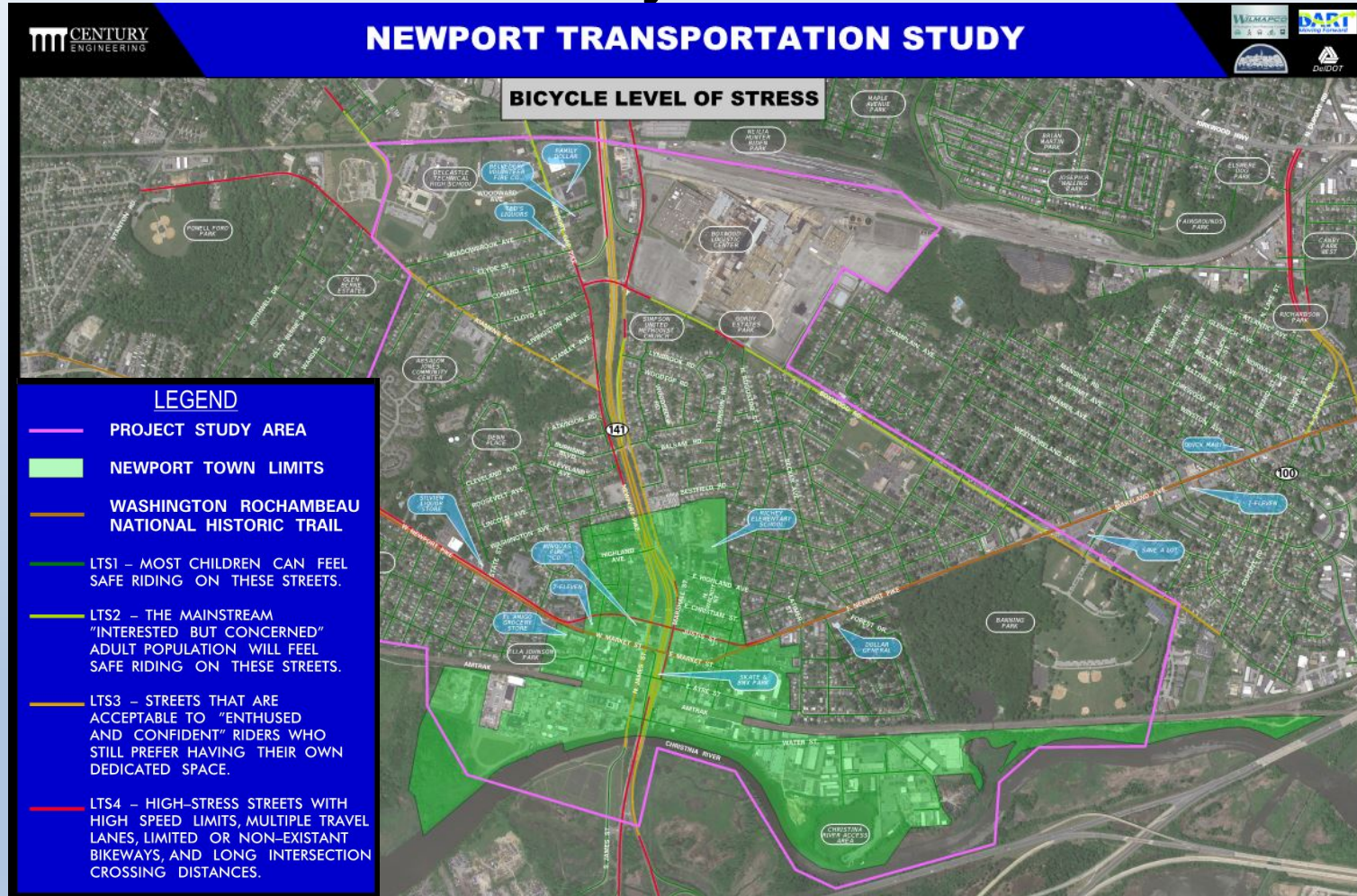
Pedestrian & Bicycle Infrastructure

 **CENTURY**
ENGINEERING

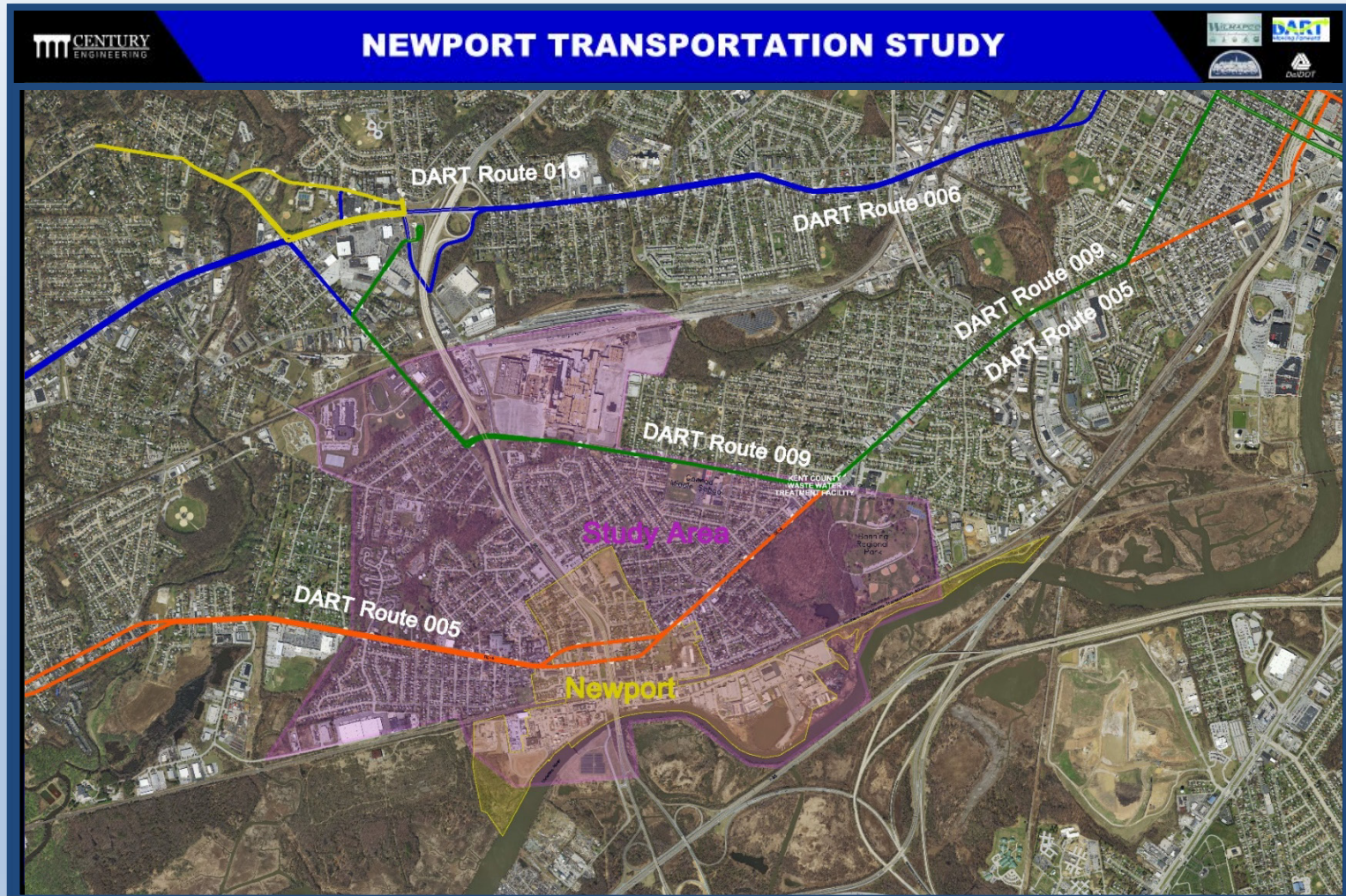
NEWPORT TRANSPORTATION STUDY



Pedestrian & Bicycle Infrastructure

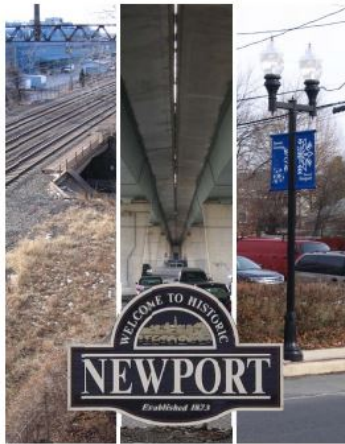


Multi-Modal Connections

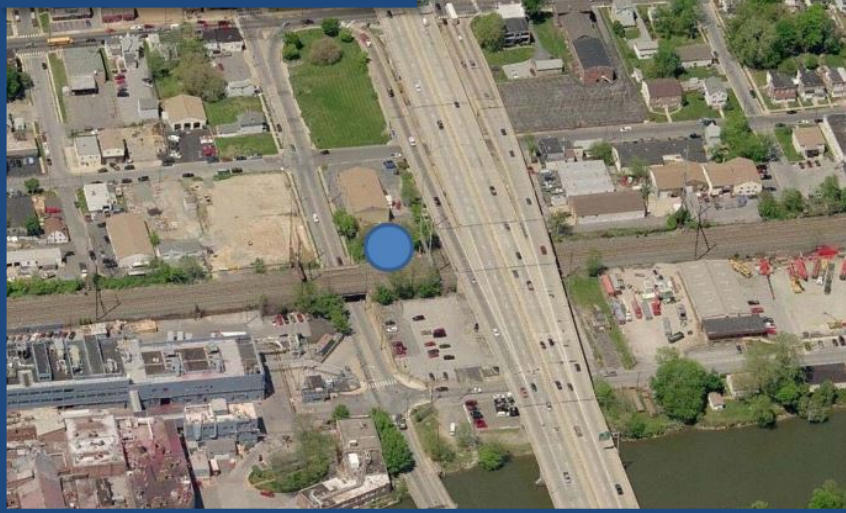


SEPTA Train Station

- Update 2013 Station Feasibility Study
- Develop Required Improvements
- Identify Service Needs for Boxwood Logistics Center
- Update Ridership Volumes
- Prepare Alternatives in Coordination with DTC



NEWPORT TRAIN STATION FEASIBILITY STUDY
FINAL DRAFT REPORT JUNE 20, 2013



Courtesy Harvey Hanna

Freight

- Evaluate Existing Truck Prohibitions
- Evaluate Established Truck Routes
- Determine Local Service Truck Traffic Generators
- Determine Future Truck Capacity and Geometric Needs
- Holistic Approach Serving Entire Study Area



Parking

- Train Station Parking (250 Riders 2013)
- Public Parking for Town Growth/Development
- Park and Ride Lot



THANK YOU