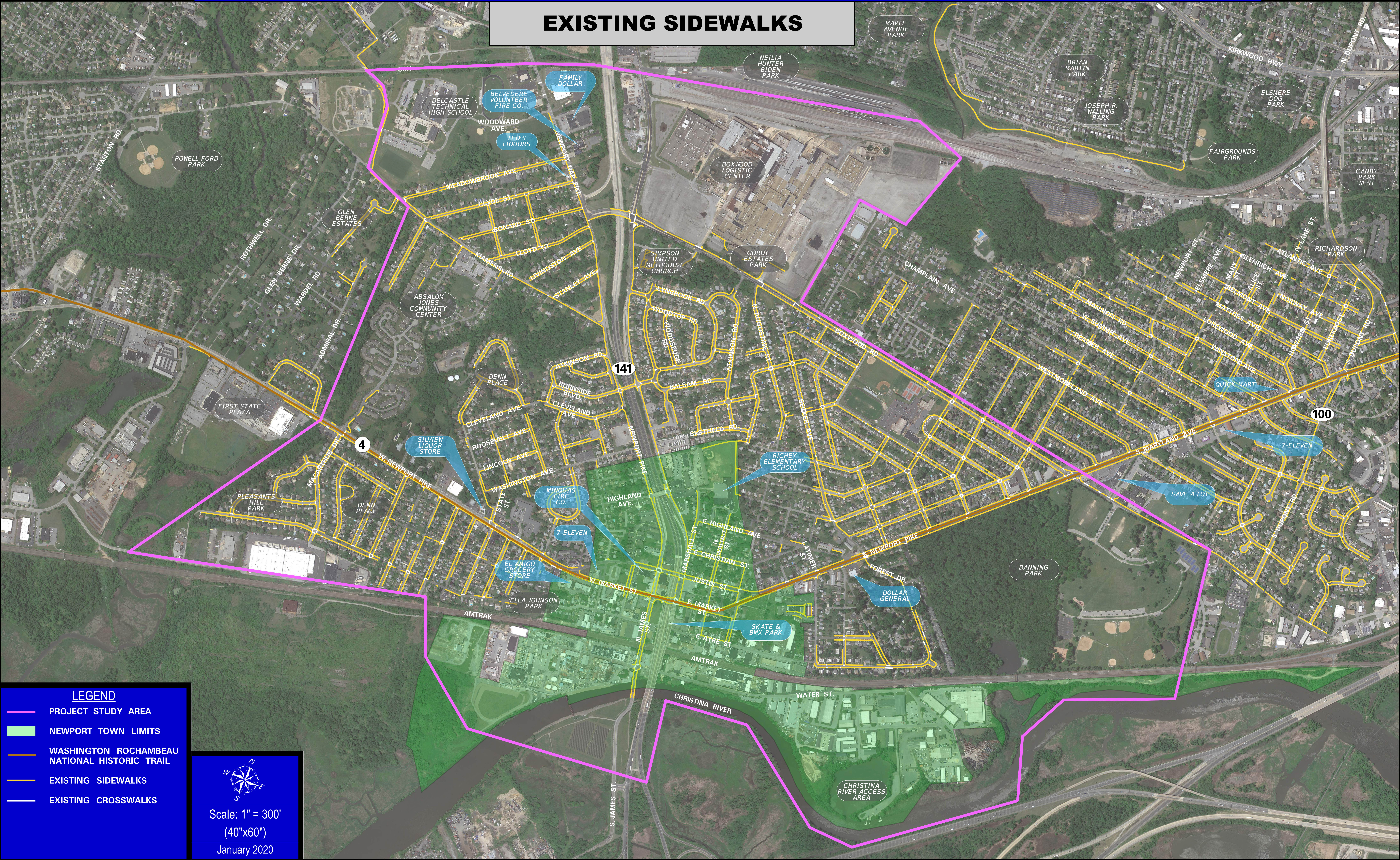


## EXISTING SIDEWALKS



**LEGEND**

- PROJECT STUDY AREA
- NEWPORT TOWN LIMITS
- WASHINGTON ROCHAMBEAU NATIONAL HISTORIC TRAIL
- EXISTING SIDEWALKS
- EXISTING CROSSWALKS

Scale: 1" = 300'  
(40"x60")  
January 2020