

Newark – Area Transit Needs Data Collection and Analysis

PMC #1 and Project Kick-Off
May 31, 2018



Agenda

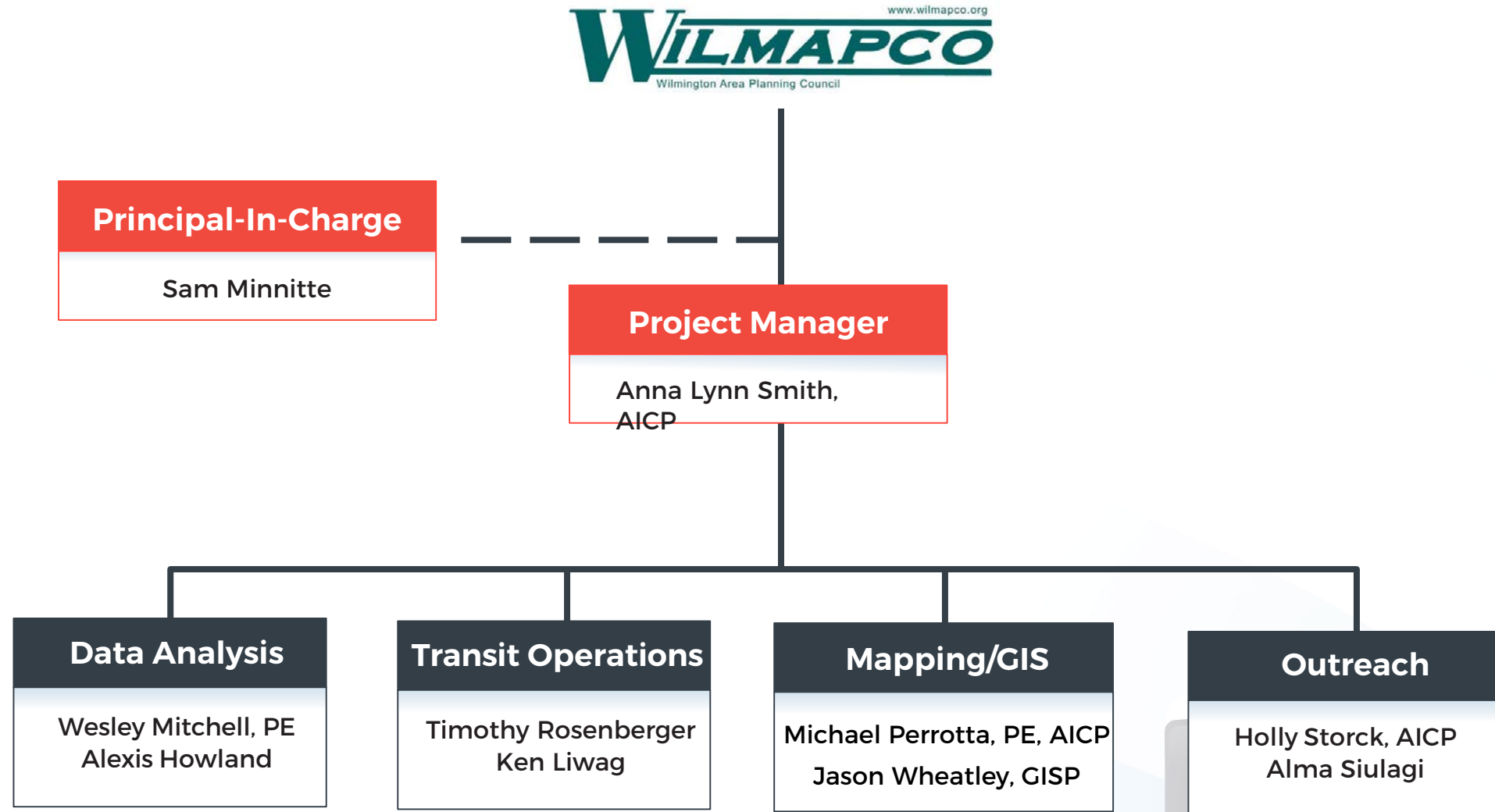
- Introductions
- Lines of Communication
- Project Goals and Objectives
- Scope, Schedule and Budget
- Standing Dates for PMC Meetings
- Outreach Efforts
- Data Collection Efforts
- Other Discussion
- Next Steps



Introductions



Team Org Chart



Lines of Communication

Anna Lynn Smith, AICP

annalynn.smith@wsp.com

O: 215-209-1204

M: 215-301-8408

Heather Dunigan

hdunigan@wilmapco.org

O: 302-737-6205 ext. 118

www.wilmapco.org/newarktransit



Project Goals and Objectives



Newark Transit Improvement Partnership Goals

1. Improve mobility options to meet demands and needs of Newark residents, employees, students and visitors
2. Provide quality passenger amenities to enhance bus service and attract discretionary riders
3. Make transit services easier to understand and use
4. Promote transit system efficiency for all providers



Newark Transit Improvement Partnership Goals

1. Improve mobility options to meet demands and needs of Newark residents, employees, students and visitors
2. Provide quality passenger amenities to enhance bus service and attract discretionary riders
3. Make transit services easier to understand and use
4. Promote transit system efficiency for all providers



Project Goals and Objectives

- *Strengthen the foundation optimizing the Newark-area transit system to achieve a more cohesive transportation network*
 - Obtain customer and stakeholder-driven information to inform better planning for additional modal choices and transit system integration and improvements
 - Identify gaps in existing system based on prior study and data collection efforts
 - Develop recommendations on how technology-enabled mobility services can augment public transit to improve passenger information and experience
 - Recommend improvements to route design, timing/scheduling changes and other recommendations for coordinated transit planning
 - Perform “snapshot” analysis of key paratransit destinations in Newark to better inform paratransit services



Project Name



Potential Renaming

Existing name:

Newark-Area Transit Needs Data Collection and Analysis

Proposed name:

Newark-Area Transit Study



Scope, Schedule and Budget



Project Schedule

		MAY	JUNE	JULY	AUGUST	SEPTEMBER	OCTOBER	NOVEMBER	DECEMBER	JANUARY
TASK 1:	Data Collection	★	★							
TASK 2:	Support the Project Management Committee (PMC)	★	★	★	★	★	★	★	★	★
TASK 3:	Snapshot Analysis of Paratransit Data for the Newark Area		★							
TASK 4:	Data Analysis					★				
TASK 5:	Prepare Final Report									★
TASK 6:	Public Outreach		★			▲	★		▲	

LEGEND	
	Technical Work
★	Deliverable Time Frames
▲	Public Workshop



Standing PMC Meetings

- Propose one Thursday each month, 1 PM – 3 PM
- Phone call or in-person, as needed
- Next meeting (call): June 21



Outreach Efforts



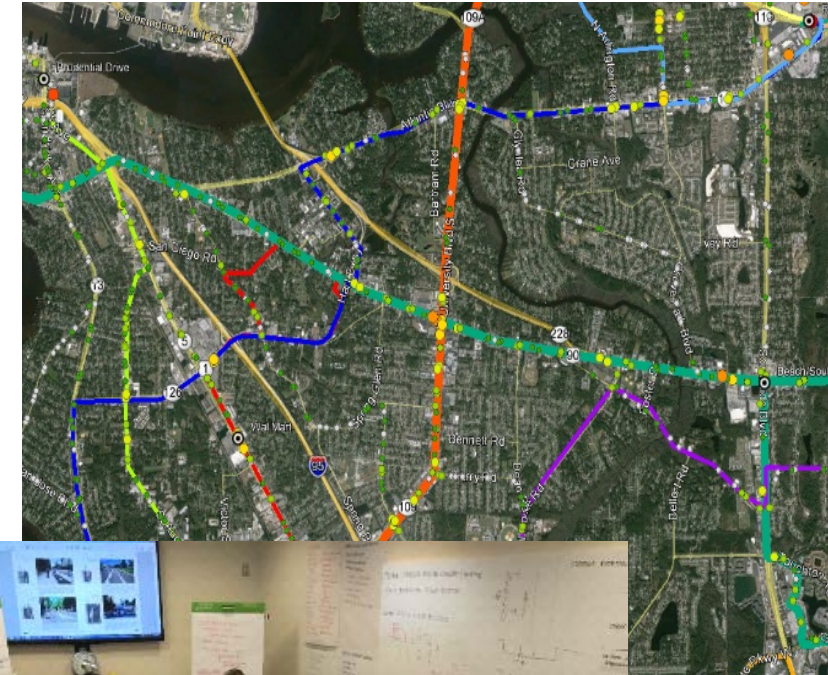
Draft Outreach for Review

- Resident survey
 - Start in June; complete early August
 - SurveyMonkey
- Business community interviews
 - SurveyMonkey
 - In-person for select employers (two days)
- Passenger intercept surveys (one day)
 - One-day: WSP + PMC representative
 - iPads + paper to capture inputs
- Bus driver interviews (one day)
 - iPads + paper to capture inputs
 - Plotted maps to mark up



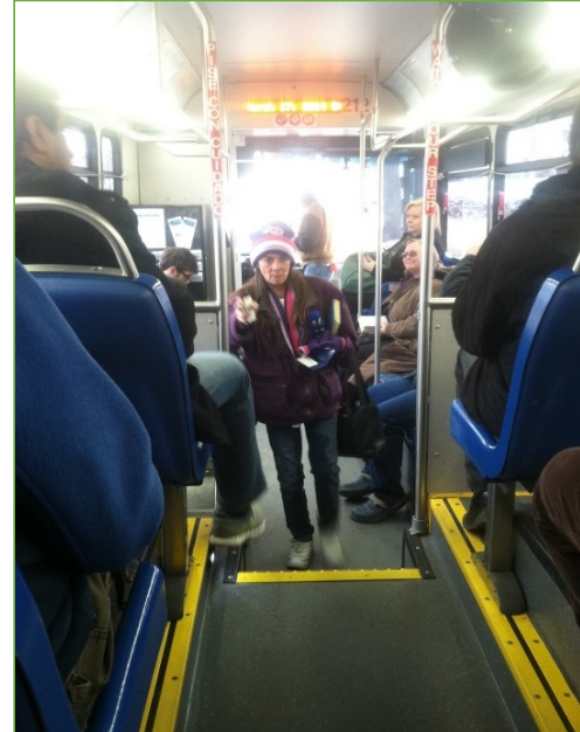
PMC Coordination Throughout Study

- Interactive Workshop(s)
 - WILMAPCO, Transit Agency staff (PMC)
 - Present initial recommendations, rationales, resource estimates
 - Participants analyze recommendations on route-by-route, line-by-line basis
 - Test resource impacts of proposed changes in real time using system models, GIS mapping
- At end of each workshop, participants have consensus on recommendations to be presented for public review and agency approvals



Public Workshop Areas of Focus

- Early fall
 - Project scope, goals, and objectives
 - Results of surveys and interviews
 - Initial analysis of existing conditions
 - Initial gap analysis findings
 - Attendee questions and feedback
- Late fall
 - Draft recommendations
 - Attendee questions and feedback
 - Newark Transit Hub Open House



To help improve bus service, we'd like you to fill out this survey form and tell us your thoughts or suggestions you may have about our city's bus service. (Use the back of this form if you'd like!)

Thank you for your time to fill out this form! Please return it to the surveyor before you leave.

Route #:

Are you (circle one): Male Female

Age (circle one): Under 16 17-35 36-64 65 or older

1) What days of the week do you usually ride the bus?

2) At what stop do you normally get on the bus? (This can be an address, intersection, or location, such as "Target.")

3) Did you transfer from a different bus route when you boarded the bus- or will you transfer from this bus to another bus route to complete your trip? If so, please tell us which bus route

3) Where do you usually ride the bus to

4) Where would you like the bus system to go that it does not already?

5) Is there anything you would like to change about the bus routes or schedules?

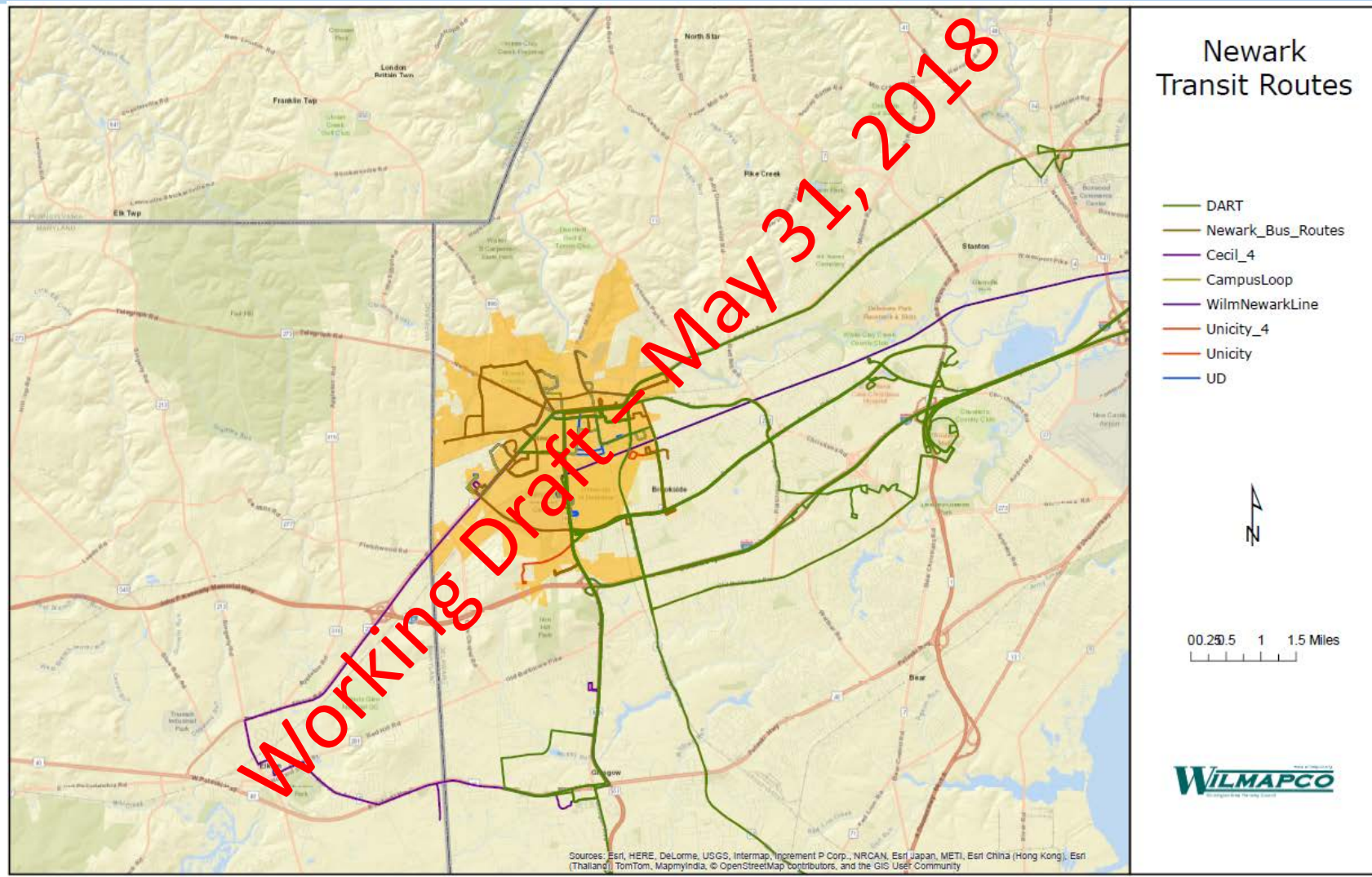
6) Do you have any other suggestions for COLUMBUS Transit System?

Transferred from Route _____ or will transfer to Route _____

Data Collection Efforts



Mapping



Other Discussion



Next Steps

