



Marshallton Circulation Study | Public Workshop

November 7, 2011

AGENDA

- Overview
- How you can participate
- Questions



- Transportation has been a key element of past planning efforts in Marshallton
- This study will address transportation issues that are important to Marshallton residents and business people
- The Walkable Community Workshop held in July was the first step in the process



A. Meetings

- Study committee
- First workshop tonight!
- Second workshop in early spring

B. Data collection and analysis

- In progress
- Counts delayed by construction

C. Traffic modeling

D. Development of improvement alternatives

E. Report



WHAT HAPPENS NEXT?

- The study will have a series of recommendations for transportation improvements.
- Very small projects (maintenance, for example) could be addressed quickly.
- Any significant projects will require funding and take time for design and construction.
- This study is necessary for that process to move forward.



How you can participate

STRONG TECHNICAL ANALYSIS
+ MEANINGFUL PUBLIC ENGAGEMENT

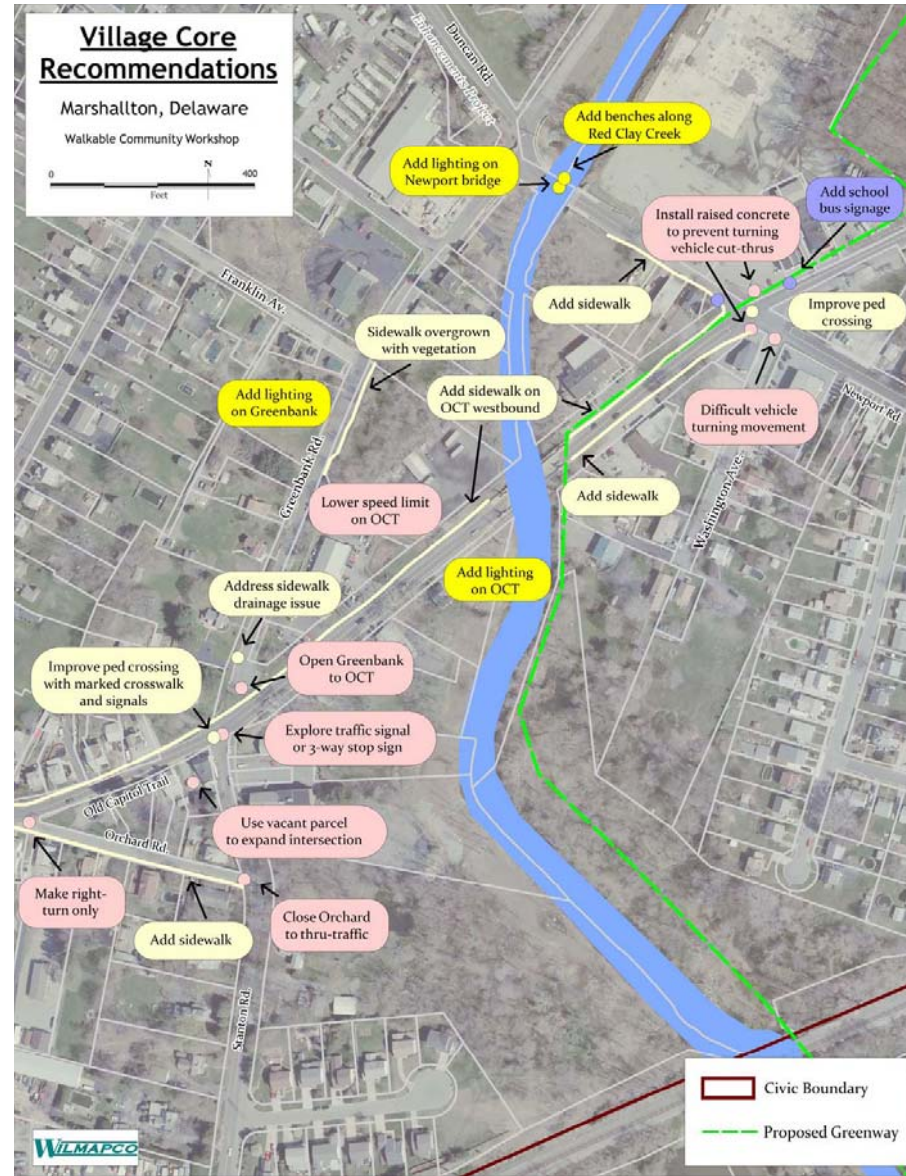
= A SUCCESSFUL STUDY



How you can participate

COMMON THEMES WE'VE HEARD

1. Controlling traffic speeds and volumes on Old Capitol Trail would improve the village character of Marshallton.
2. Making Marshallton more walkable would improve residents' quality of life.



How you can participate

CONTROLLING TRAFFIC

- Preserve the character of the community
- There have been many crashes on eastbound Old Capitol Trail (OCT) at the curve
- Residents have trouble getting out of their driveways
- The new bridge on Newport Road (under construction) may increase traffic in Marshallton
- Speeding, inconsistent speed limits, no place for police to park for enforcement
- Westbound OCT traffic sneaks by left turns onto Stanton Road
- Someone may develop land on the east side of Greenbank Road between Duncan Road and OCT
- Some parking lots require cars to back onto roads, causing conflicts
- Too many trucks on New Street
- Traffic on OCT is bypassing delays on Kirkwood Highway
- Drainage problems at the OCT/Newport Road intersection
- Cars turning at the OCT/Newport Road intersection sometimes go through parking lots
- There are no bicycle facilities in Marshallton

How you can participate

IMPROVING WALKING

- There are no crosswalks anywhere in Marshallton
- It's hard to walk across the intersection of Old Capitol Trail (OCT) and Newport Road
- There's an opportunity to extend the recent streetscape project to/through the Ametek site
- Walking is difficult along Stanton Road to Powell Ford Park
- Walking is difficult along Newport Road
- Walking is difficult along Greenbank Road north of Duncan Road
- Walking is difficult along New Street
- Walking is difficult along Gilbert Avenue
- There are gaps in the sidewalk network
- School bus stop at OCT and Newport Road is unsafe
- Tie in potential greenway along Red Clay Creek
- It's difficult to walk to DART Route 6 along OCT and School Lane
- There are no shelters or benches at bus stops on Kirkwood Highway
- Lighting and benches are needed for pedestrians

How you can participate

MARK THE ISSUES YOU CONSIDER MOST IMPORTANT

Which Projects Are Most Important To You?

Help us prioritize projects!

Transit Projects

Develop short-term bus route changes to reduce bus congestion at Rodney Square



Develop a downtown transit center at the current site of the Midtown Parking Center at 9th and Shipley Streets



Pedestrian/Bicycle/Streetscape Projects

Examine adjustments to the curve from 12th Street onto Delaware Avenue as part of improving streetscape, pedestrian and bicycle accommodations along 11th Street/12th Street/Delaware Avenue corridor



Improve streetscape, pedestrian and bicycle accommodations along King and Walnut Streets



Enhance the pedestrian experience under the Amtrak bridges



Designate Market Street as an on-street bike route with signs, pavement markings, and bike parking



WILMINGTON DOWNTOWN CIRCULATION STUDY

How you can participate

MARK UP A MAP TO SHOW US WHERE OTHER ISSUES ARE



NEXT STEPS AFTER THE WORKSHOP

- Complete data collection
- Analyze existing conditions
- Determine technical deficiencies
- Summarize issues
 - Committee
 - Public
 - Technical analysis
- Start developing improvement alternatives



Questions?