



State Report on Transportation Overview to WILMAPCO

Heather R. Murphy, Director
Office of Planning & Capital Programming
Maryland Department of Transportation
February, 2019





MDOT Mission



MISSION STATEMENT

“The Maryland Department of Transportation is a customer-driven leader that delivers safe, sustainable, intelligent, and exceptional transportation solutions in order to connect our customers to life’s opportunities.”





MDOT AT-A-GLANCE



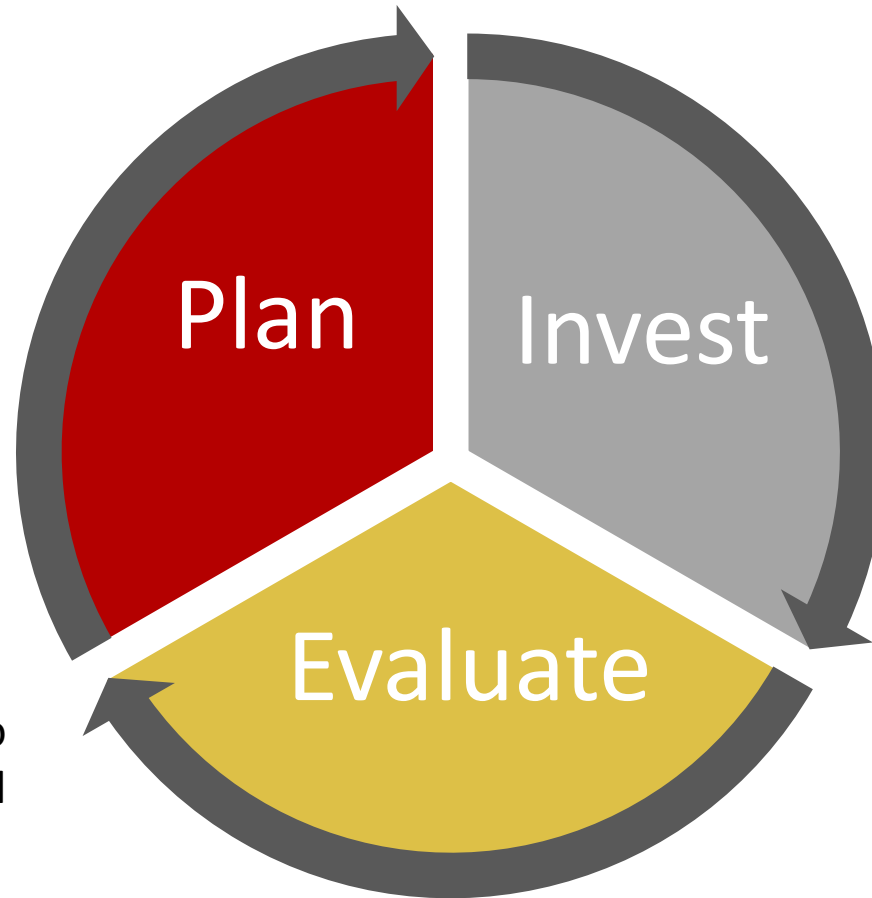
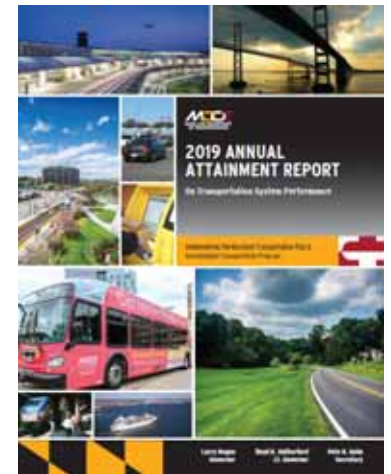


The Maryland Transportation Plan (MTP)

- The Maryland Transportation Plan (MTP) is revised every 5 years through a public participation process to address current and future challenges;
- The MTP establishes a *20-year vision for multi-modal transportation in Maryland* that *outlines the State's transportation policies and priorities* and *helps guide Statewide investment decisions* for all methods of transportation.
- The MTP is submitted annually to the Maryland General Assembly as part of **the State Report on Transportation**, along with the Consolidated Transportation Program (CTP) and Attainment Report on Transportation Performance.
- January 16, 2019 – We submitted the Final Plan with State Report on Transportation.



The State Report on Transportation



The State Report on Transportation is submitted annually to the Maryland General Assembly.





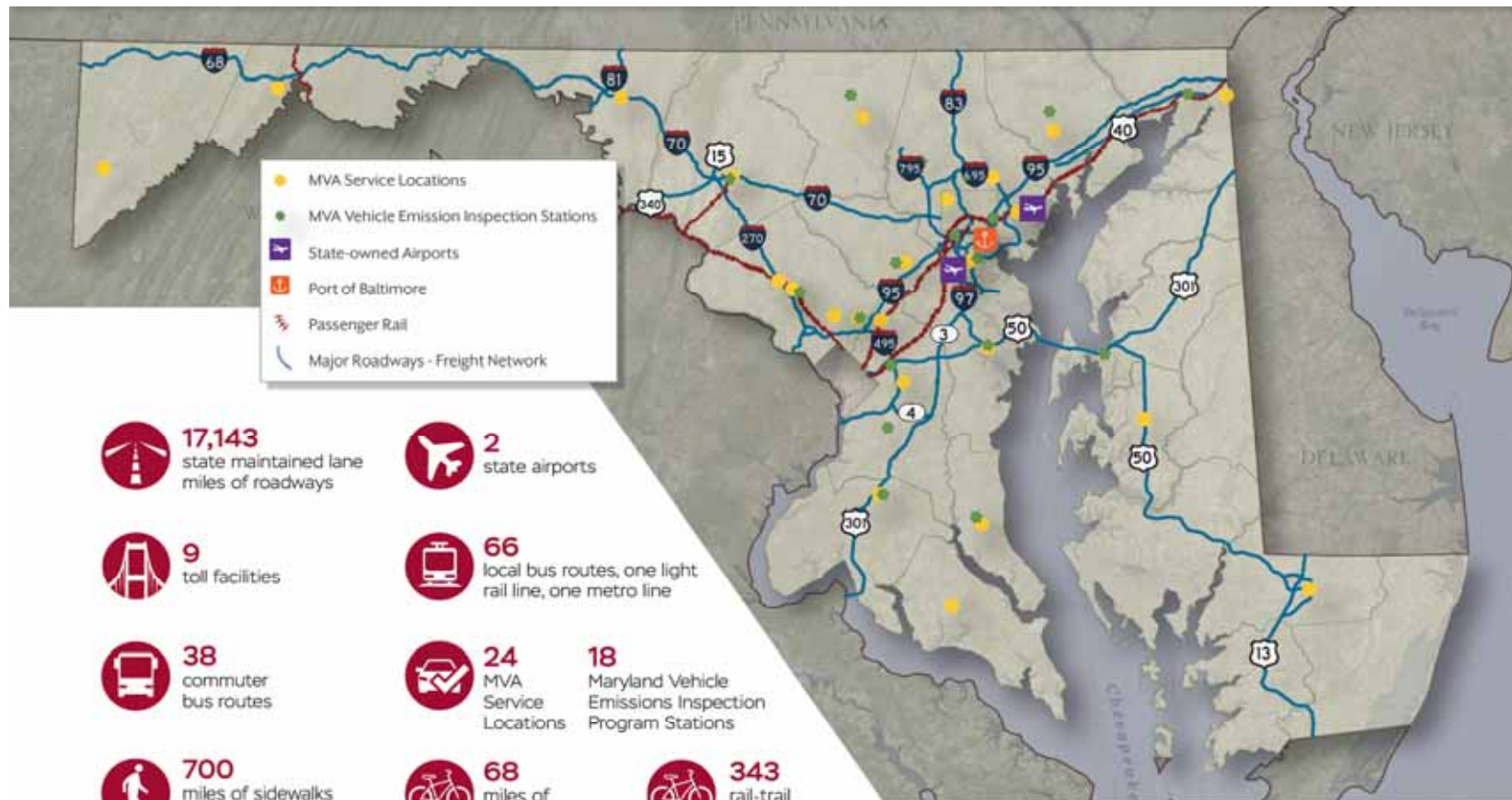
Maryland Bicycle and Pedestrian Master Plan

The Bicycle and Pedestrian Master Plan establishes a *20-year vision to support cycling and walking* as modes of transportation in Maryland. The Plan *provides guidance and investment strategies to support cycling and walking*, both on-road and off-road, as part of Maryland's multimodal transportation network. Last updated in 2014.

- Updated every 5 years, in close coordination with the MTP.
- Establishes a 20-year vision to support cycling and walking as modes of transportation in Maryland.
- Provides guidance and investment strategies to support cycling and walking, both on-road and off-road, as part of Maryland's multimodal transportation network.
- Also was completed in January 2019.



Maryland's Major Statewide Transportation System



-  **17,143** state maintained lane miles of roadways
-  **9** toll facilities
-  **38** commuter bus routes
-  **700** miles of sidewalks along state roadways
-  **171** miles of short line freight rail and Maryland Area Regional Commuter (MARC) commuter rail service
-  **2** state airports
-  **66** local bus routes, one light rail line, one metro line
-  **24** MVA Service Locations
-  **68** miles of shared-use paths
-  **7** State-owned public cargo terminals
-  **18** Maryland Vehicle Emissions Inspection Program Stations
-  **343** rail-trail miles
-  **1** international cruise terminal at the Port of Baltimore

MDOT also supports 33 public use airports in the State through federal grant programs, provides technical assistance for transit systems in 23 counties, and is a funding partner of the regional Washington Metropolitan Area Transit Authority (WMATA).

Maryland's Transportation Trends

Demand for travel is directly tied to population, employment, density, and demographics. Population and employment growth adds daily trips that the transportation system needs to accommodate. Where people live, how they travel to work, and their stage of life, all influence travel demand in Maryland.

**PORT OF BALTIMORE
FOREIGN CARGO TONNAGE**
31.8M ▼ **3.0%**
2016 CY (2010-2016)

POPULATION
6.0M ▲ **4.4%**
2016 CY (2010-2016)

EMPLOYMENT
3.6M ▲ **6.2%**
2015 CY (2010-2016)

REGISTERED VEHICLES
5.1M ▲ **4.9%**
2016 FY (2010-2016)

LICENSED DRIVERS
4.3M ▲ **4.8%**
2016 FY (2010-2016)

MVA TRANSACTIONS
11.1M ▲ **0.8%**
2016 FY (2010-2016)

**ELECTRIC VEHICLE
REGISTRATIONS**
6,788 ▲ **1014.6%**
2016 CY (2012-2016)

**ANNUAL VEHICLE MILES
TRAVELED (VMT)**
58.9B ▲ **4.9%**
2016 CY (2010-2016)

ANNUAL VMT PER CAPITA
9,802 ▲ **0.9%**
2016 FY (2010-2016)

ANNUAL TRANSIT RIDERSHIP
260.8M ▼ **8.6%**
2016 FY (2010-2016)

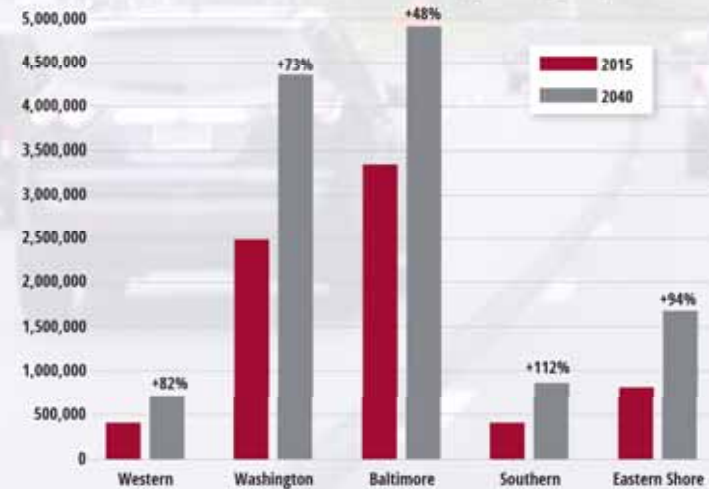
AIR CARRIER EMPLANEMENTS
25.1M ▲ **14.6%**
2016 CY (2010-2016)

How Marylanders Get to Work (by percentage in 2013)



Source: State Transportation Statistics, 2015, prepared by the US Department of Transportation Bureau of Transportation Statistics

Vehicle Hours of Travel (by Region)



Source: Maryland Department of Transportation State Highway Administration, MSTM V1.1

Maryland's Five Regions



Maryland is the 9th smallest state and contains a remarkable degree of geographic diversity. Each region has its own character, distinct needs, and associated transportation system.



Goals, Objectives, and Performance Measures

What helped shape the development of 2040 MTP goals & objectives?

- MDOT conducted external surveys for Maryland residents to provide input on transportation needs and priorities.
- Coordinated with MDOT staff on key transportation priorities.
- MDOT’s missions statement, existing plans, and programs all contributed to the 2040 MTP.



MTP Goals



MTP Goals

Ensure a Safe, Secure and Resilient Transportation System



Facilitate Economic Opportunity and Reduce Congestion in Maryland through Strategic System Expansion

Maintain a High Standard and Modernize Maryland's Multimodal Transportation System



Improve the Quality and Efficiency of the Transportation System to Enhance the Customer Experience

Ensure Environmental Protection and Sensitivity



Promote Fiscal Responsibility

Provide Better Transportation Choices and Connections



- We now have seven goals.
- Each goal has objectives.
- Each goal/objective has performance measures outlined for the annual Attainment Report (AR).
- The Governor's AR Advisory Committee advised MDOT on the selection of the performance measures and how well these measures and supporting data align with the goals of the MTP.





2040 MTP Implementation & Strategies

- MDOT identified a set of strategies for implementing goals and objectives established in the 2040 MTP.
- Strategy development was informed by MDOT strategic plans and business plans as well as input from the public outreach.
- Putting these strategies in action will help assure progress toward performance targets identifies in the annual Attainment Report (AR).
- Some strategies are statewide; however MDOT recognizes that the State's regions are diverse and places high importance on customizing strategies to fit each region's unique needs and special context as shown in the region maps.
- *For the State and each region, a list of **illustrative** projects are identified. These illustrative projects outline a list of projects we hope to pursue over the 20-year timeframe of the Plan and not a financial commitment.*





2040 MTP Implementation & Illustrative Statewide Strategies

Statewide Illustrative Projects:

- Replace electronic toll collection and operation system.
- Upgrade truck weigh facilities.
- Install solar canopies in parking lots.
- Continue to deploy smart signals.
- Customer Connect will modernize MDOT MVA's entire infrastructure.
- Deploy Positive Train Control (PTC).
- Partner to promote State wide Transit Innovation Grant Program

(Refer to page 27 of Draft 2040 MTP for more details)

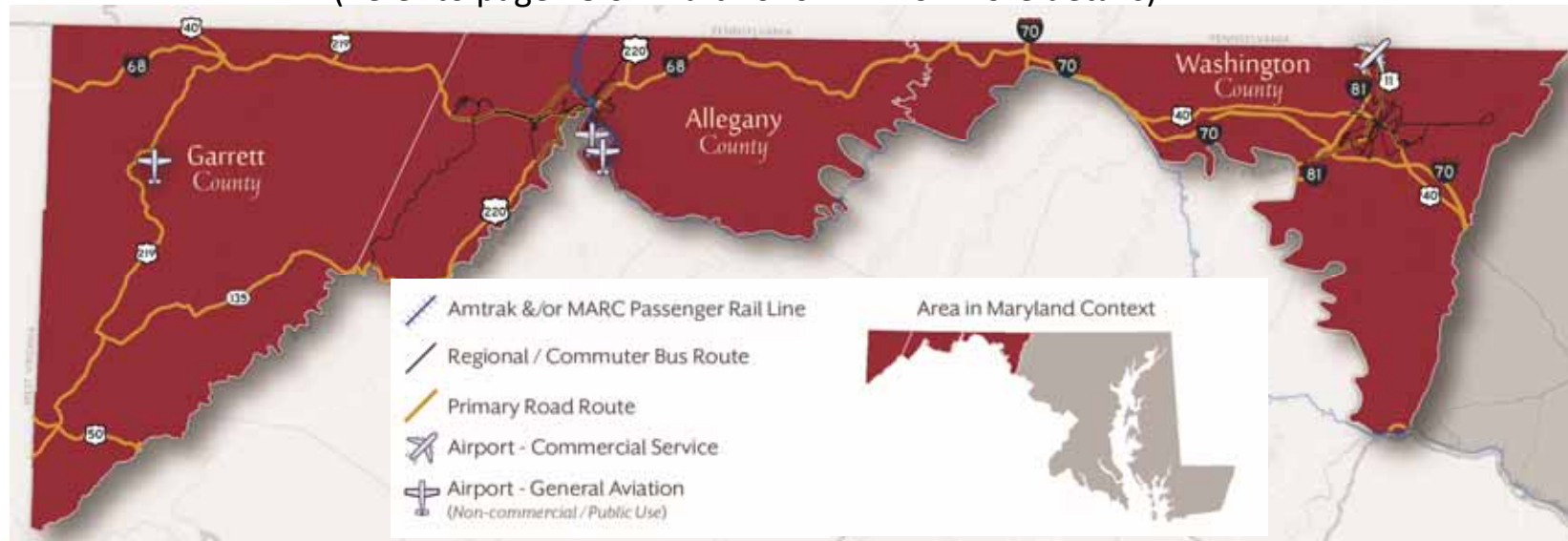


2040 MTP Implementation – Western Maryland

Illustrative Projects:

- Complete I-81 corridor improvements from West Virginia State Line to the Pennsylvania State Line.
- Address truck parking shortages statewide including at I-68 and the Youghiogheny Overlook.
- Complete US 219 corridor improvements from I-68 / US 40 to the Pennsylvania State Line.
- Conduct a US 220 joint planning study with West Virginia.
- Improve the connection between the Cumberland Amtrak station and the Allegheny Highlands Trail.

(Refer to page 28 of Draft 2040 MTP for more details)



2040 MTP Implementation – Eastern Shore

Illustrative Projects:

- Complete a National Environmental Policy Act Study for the I-95 Belvidere road Interchange to determine the environmental effects of a new interchange access at I-95 and Belvidere Road.
- Complete a National Environmental Policy Act Study to determine the environmental effects of a new Bay bridge crossing.
- Construct a shared use path on US50 from MD 611 to the US 50 Bridge.
- Widen US 50 from US 301 to MD 404 and replace of at-grade intersections with interchanges.
- Support the construction of an Ocean city Transit Center.

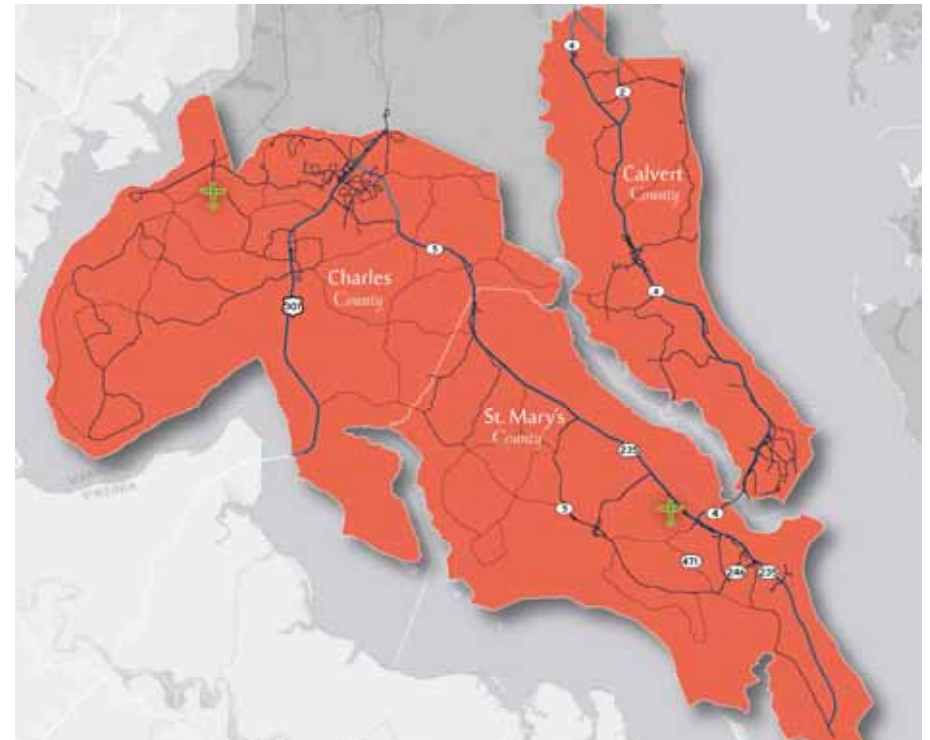
(Refer to page 29 of Draft 2040 MTP for more details)



2040 MTP Implementation – Southern Maryland

Illustrative Projects:

- Complete construction of the Nice Bridge, a new Potomac River crossing from Charles County, Maryland, to King George County, Virginia.
- Continue to progress on updates to MD 4 from MD 2 to MD 235 including the replacement of the Thomas Johnson bridge.
- Widen MD 2/4 to six lanes from north of Stoakley Road/Hospital road to south of MD 765A in Prince Frederick.
- Upgrade MD 5 from MD 471 to MD 246 including the bridge over Saint Mary's River.



- Regional / Commuter Bus Route
- Primary Road Route
- + Airport - General Aviation
(Non-commercial / Public Use)

Area in Maryland Context



(Refer to page 30 of Draft 2040 MTP for more details)



2040 MTP Implementation – Baltimore Metro Region

Illustrative Projects:

- Replace the Air Traffic Control towers at BWI Marshall and Martin State Airports.
- Complete the concourse connector program at BWI Marshall Airport.
- Construct in coordination with the Maryland Stadium authority and the Orioles a new Camden station to replace the temporary facility built in the 1990s to serve the Camden, MARC, and Light Rail LINK trains.
- Complete a National Environmental Policy Act Study for the I-95 Port Covington Access.

(Refer to page 31 of Draft 2040 MTP for a complete list and more details)

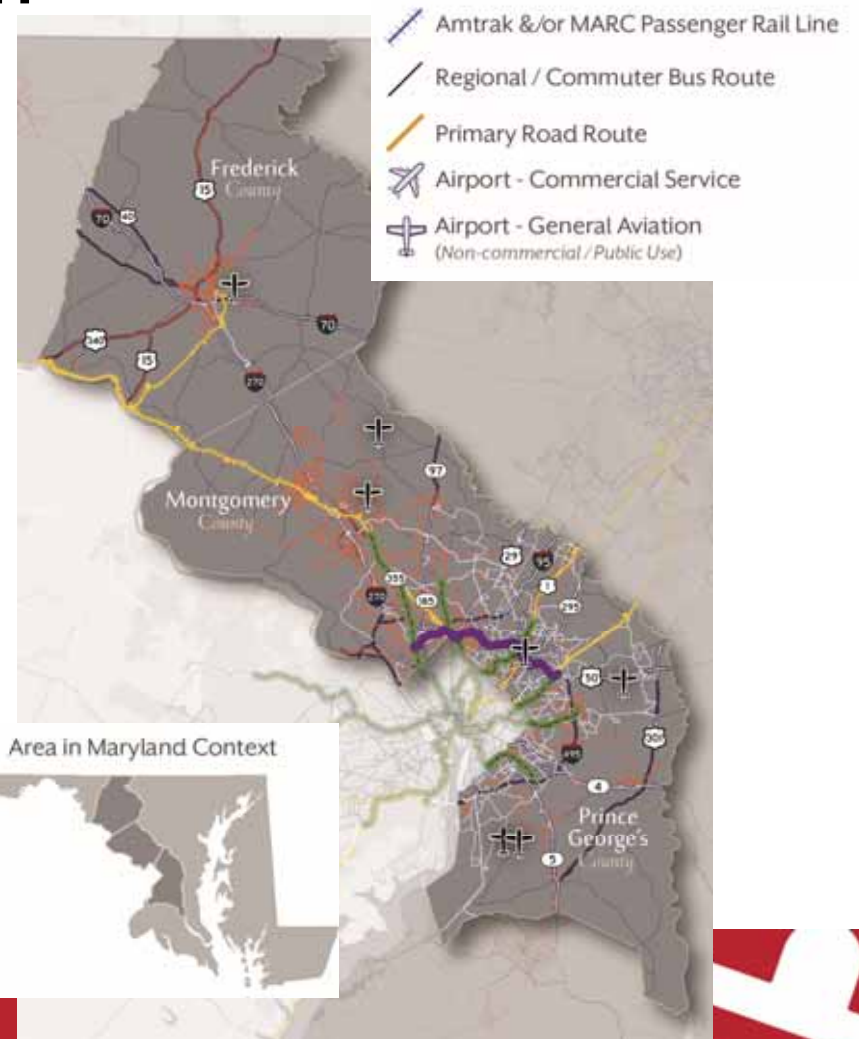


2040 MTP Implementation – Washington Metro Region

Illustrative Projects:

- Complete the Purple Line transitway.
- Complete the I-270 innovative congestion management project.
- Complete the I-495 & I-270 Public-private Partnership (P3) Project.
- Continue the pedestrian, safety, and operational upgrades to US1 from College Avenue to I-495/ I-95.
- Address truck parking shortages statewide, including at the I-70 eastbound and westbound Welcome areas.

(Refer to page 32 of Draft 2040 MTP for a complete list and more details)





Thank you - For More Information

Heather R. Murphy

Director

410-865-1275

hmurphy@mdot.state.md.us

2040 MTP update:

Michelle D. Martin

Assistant Director

410-865-1285

mmartin@mdot.state.md.us

OR 2019MTP@mdot.state.md.us

2019 Bicycle and Pedestrian Plan Update

Contact us here: BikePedPlanUpdate@mdot.state.md.us



MARYLAND BICYCLE & PEDESTRIAN MASTER PLAN
2019 Update

