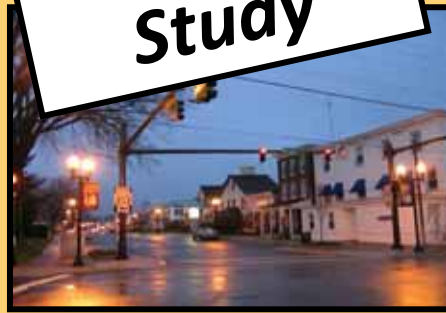


Elkton Signage Study





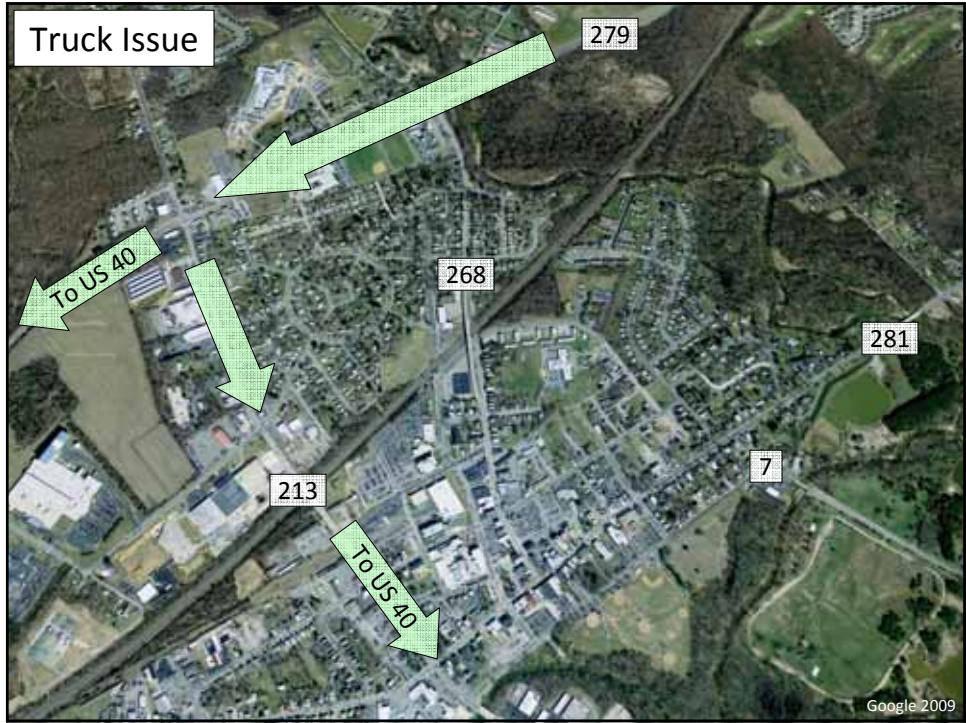
Mayor and Commissioners: December '09



Background

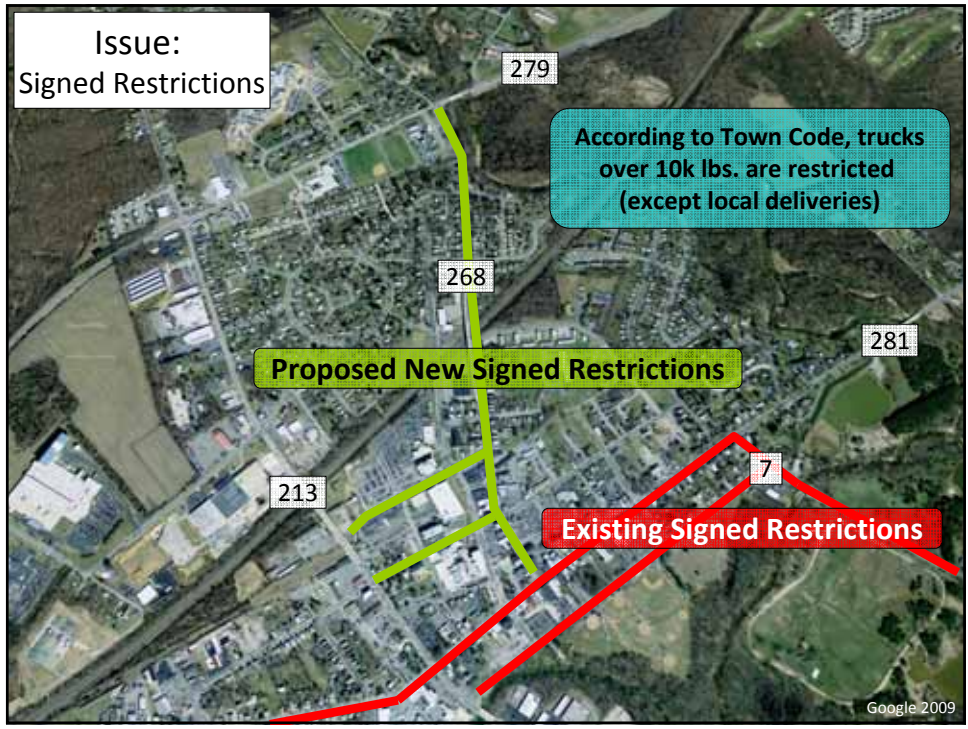
Elkton Signage Study

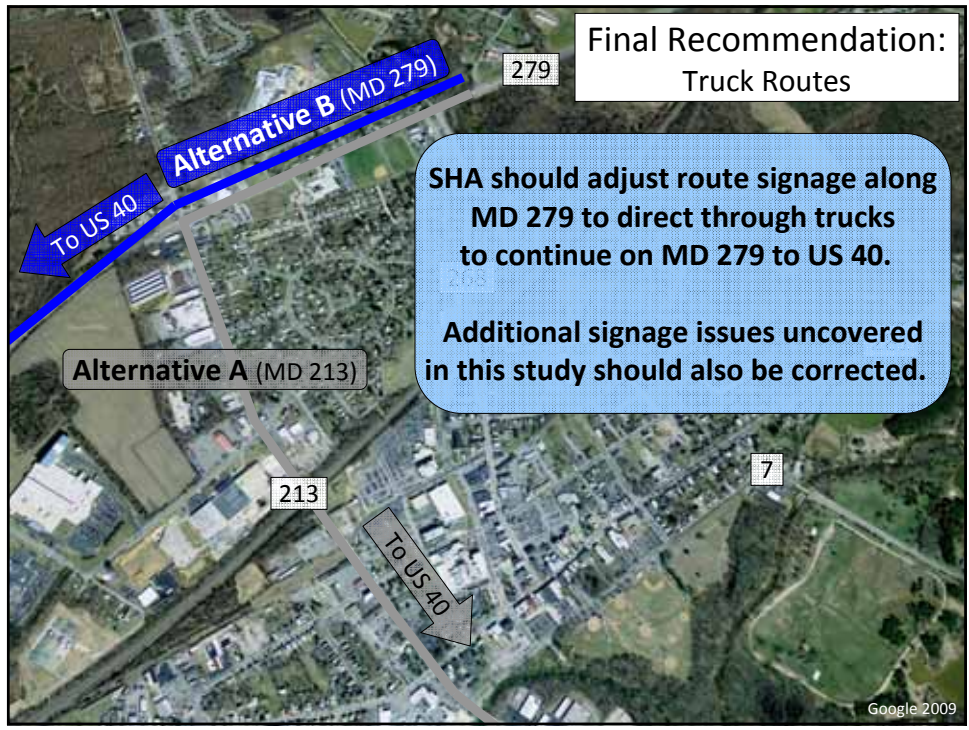
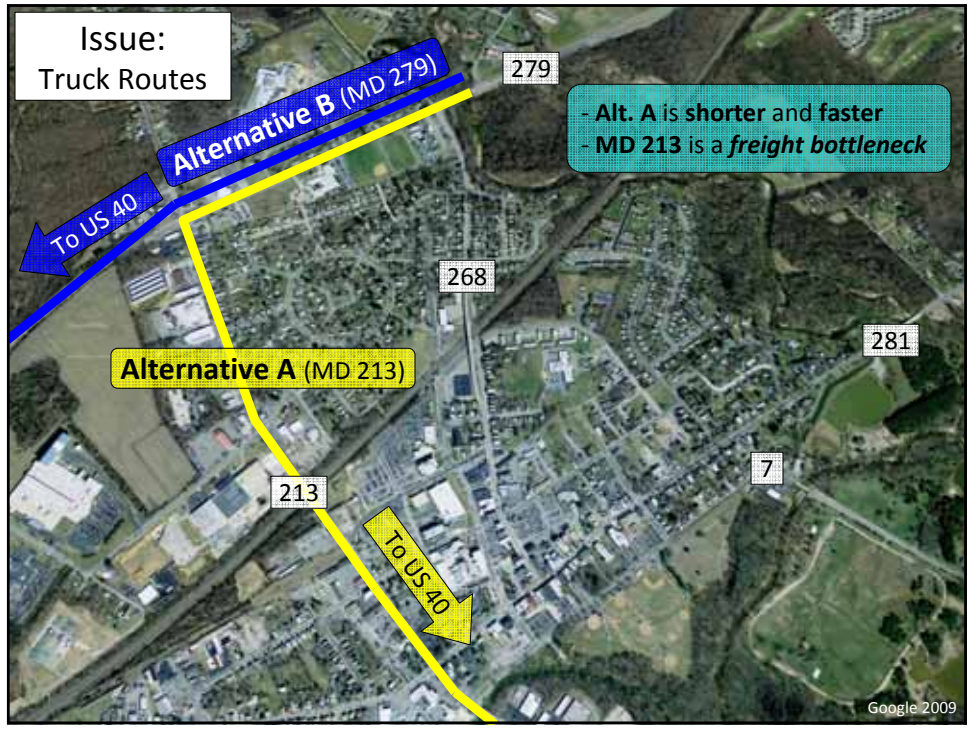
-  Study began in Summer 2009
-  Steering Committee formed
 - Town, County, State, WILMAPCO
 - First meeting: June 9th
 - Second meeting: August 25th
 - Third meeting: November 19th

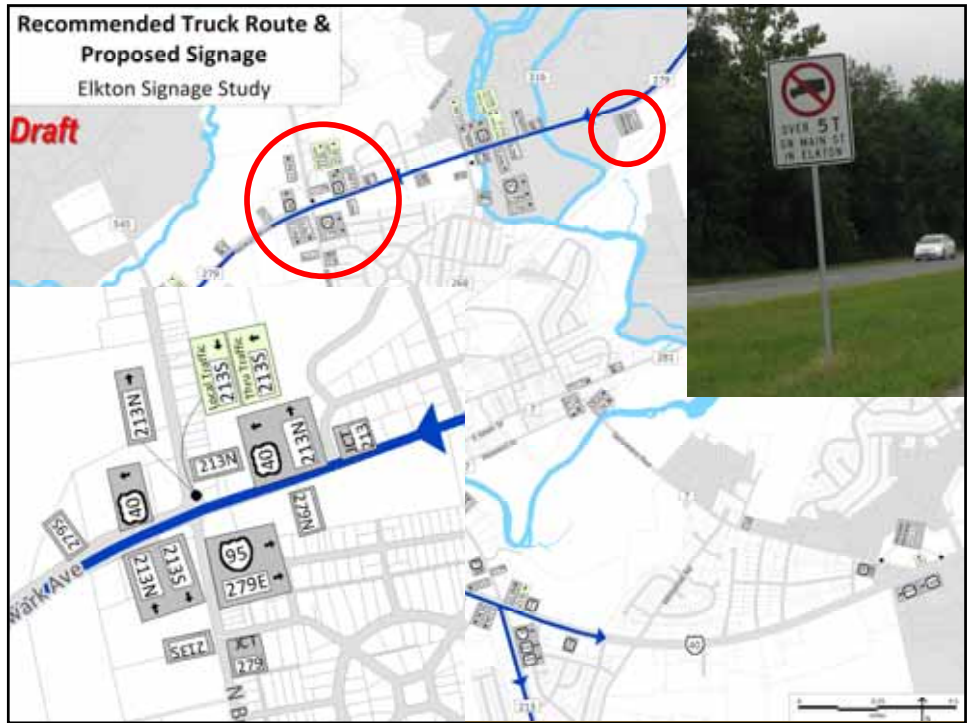






	Goals and Planning Process	<i>Elkton Signage Study</i>
	<p>Goal: Limit through trips along MD 268</p> <ul style="list-style-type: none"> • Signing and enforcing truck restrictions • Route signage improvements • On-board navigation system (GPS) alteration <p>Planning Process</p> <ul style="list-style-type: none"> • Signage inventory • Identify restrictions / alternatives to MD 268 • Supplement existing truck data • Consider freight bottleneck • Consider public input • Restriction / signage recommendations • Request alterations to truck GPS data 	








	<p style="text-align: right;"><i>Elkton Signage Study</i></p> <h3>GPS Alterations</h3> <ul style="list-style-type: none"> Alterations to truck GPS data <ul style="list-style-type: none"> • Trucks can be restricted at Town's request Final Recommendation <ul style="list-style-type: none"> • The Town, with a letter of support from SHA, should request from GPS providers that their truck GPS units route through trucks on MD 279. MD 268 (and MD 213) should be avoided.
--	--

	<div style="display: flex; justify-content: space-between;"> <div data-bbox="495 268 771 325" style="border: 1px solid black; padding: 2px;">Public Outreach</div> <div data-bbox="1006 277 1242 310"><i>Elkton Signage Study</i></div> </div>
	<div data-bbox="527 388 779 441" style="display: flex; align-items: center;">  <h3>Public Input</h3> </div> <ul style="list-style-type: none"> • Mayor and Commissioners Meeting (Sept. 2nd) • Elkton Fall Festival (Sept. 19th) • Elkton TOD Workshop (October 29th) • Positive feedback so far • But concerns about economic development <ul style="list-style-type: none"> • Local deliveries are exempted from any restrictions

	<div style="display: flex; justify-content: space-between;"> <div data-bbox="495 1138 763 1194" style="border: 1px solid black; padding: 2px;">Key Next Steps</div> <div data-bbox="1006 1146 1242 1180"><i>Elkton Signage Study</i></div> </div>
	<div data-bbox="560 1249 1258 1302" style="display: flex; align-items: center;">  <h3>Town endorsement of recommendations</h3> </div> <ul style="list-style-type: none"> • December <div data-bbox="560 1386 1006 1438" style="display: flex; align-items: center;">  <h3>Produce draft document</h3> </div> <ul style="list-style-type: none"> • December/January <div data-bbox="560 1522 1023 1575" style="display: flex; align-items: center;">  <h3>WILMAPCO endorsement</h3> </div> <ul style="list-style-type: none"> • Technical Advisory Committee: February • Public Advisory Committee: February • Council: March



Questions?
wilmapco.org/elktonsignage

Extra Slides



Final Recommendations

Elkton Signage Study



The Town should consider signing (and enforcing) truck restrictions on additional municipal streets, where appropriate.



SHA should adjust route signage along MD 279 to direct through trucks to continue on MD 279 to US 40. Additional signage issues uncovered in this study should also be corrected.



The Town, with a letter of support from SHA, should request from GPS providers that their truck GPS units route through trucks on MD 279. MD 268 (and MD 213) should be avoided.

