



# EAST ELKTON

## Traffic Circulation and Safety Plan

WILMAPCO PAC/TAC  
December 2023



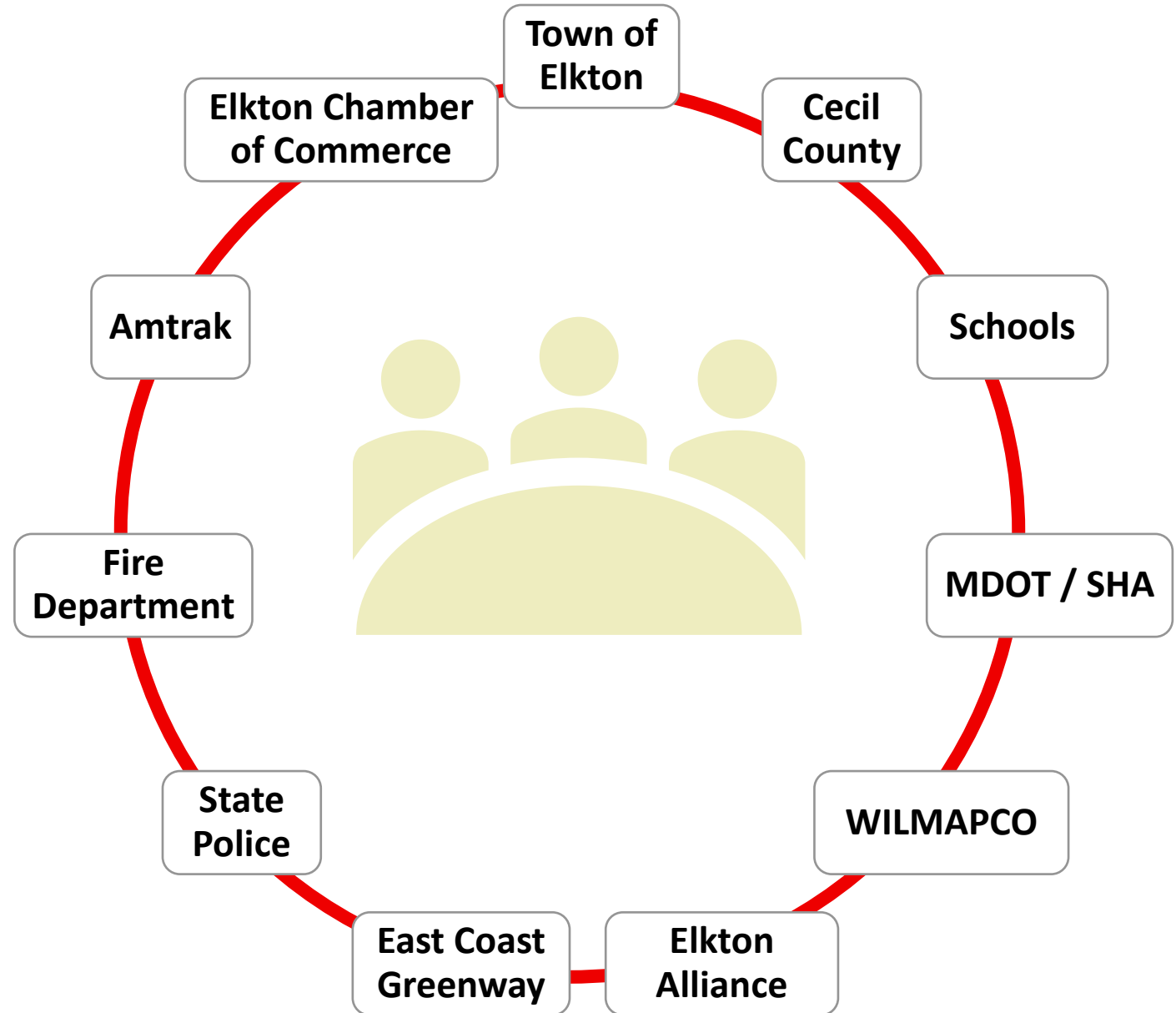
# UPWP Planning Requests



## Lead Consultant



# Steering Committee



# Plan Goals

- Understand and document **existing traffic movements**.
- Evaluate **roadway realignments** of Delancy Road and Muddy Lane.
- Examine and recommend **resolutions to land use conflicts** near the MD 279/I-95 Interchange.
- Examine and recommend **improvements to road safety** along all roads, especially Belle Hill Road.
- Improve **walking and cycling connectivity** to key destinations.

# Planning Process

## Existing Conditions

- Traffic
- Land Use



## Visioning

- Survey 1
- Workshop 1

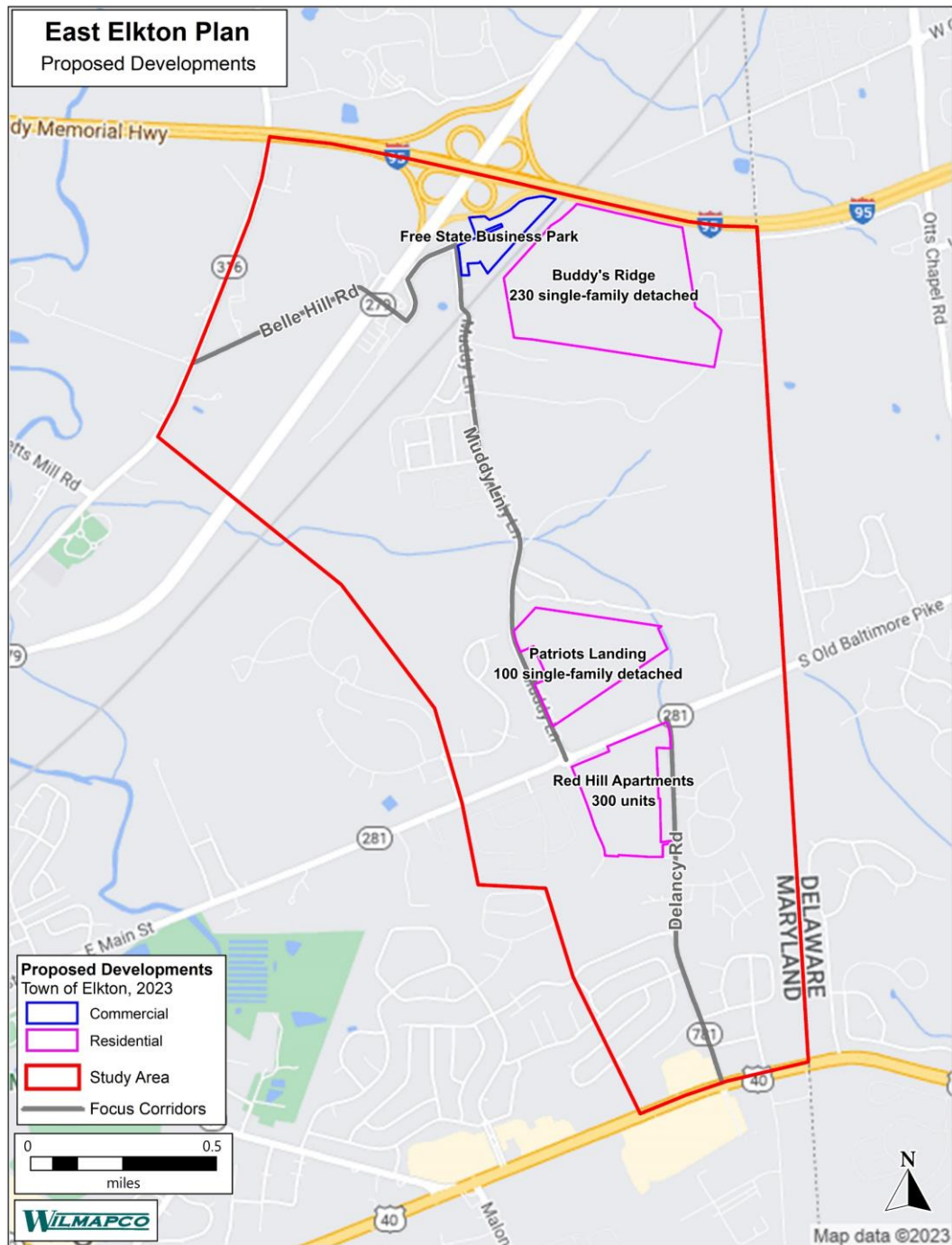


## Draft Recommendations

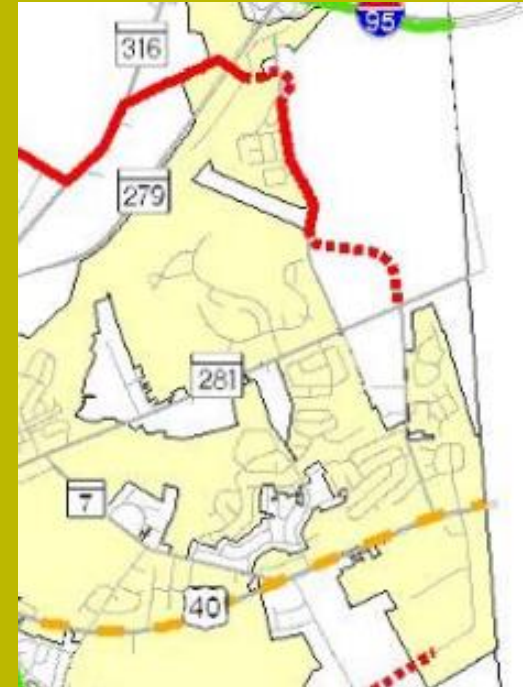
- Workshop 2
- Survey 2

## Select Recommendations

- Workshop 3



## Cecil County Comprehensive Plan, 2010

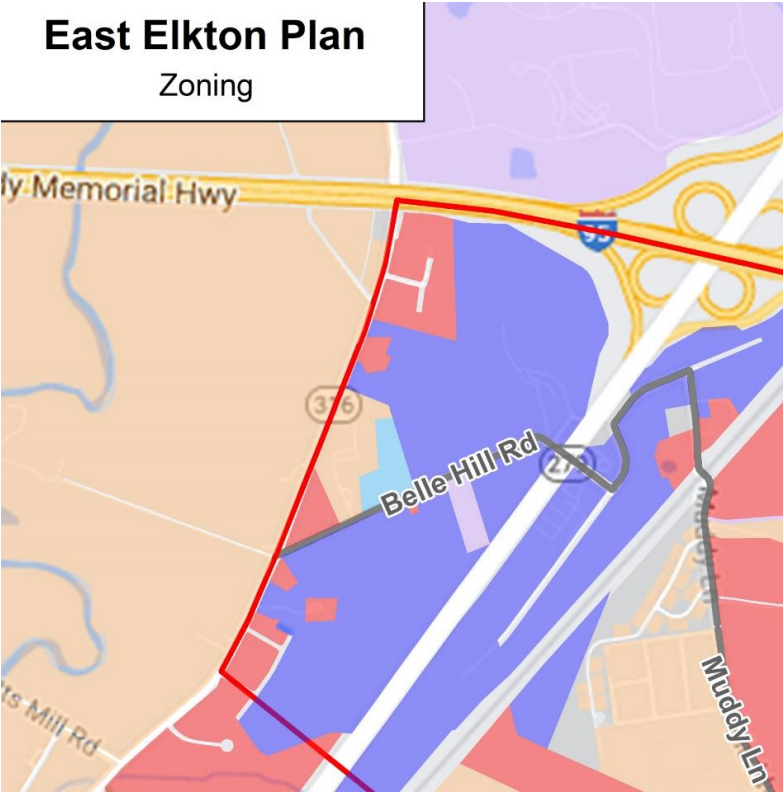


### Legend

- Major Roads
- Lanes Added
- Upgraded Roads
- New Road Segments
- US 40 Upgrades
- Intersection Upgrades

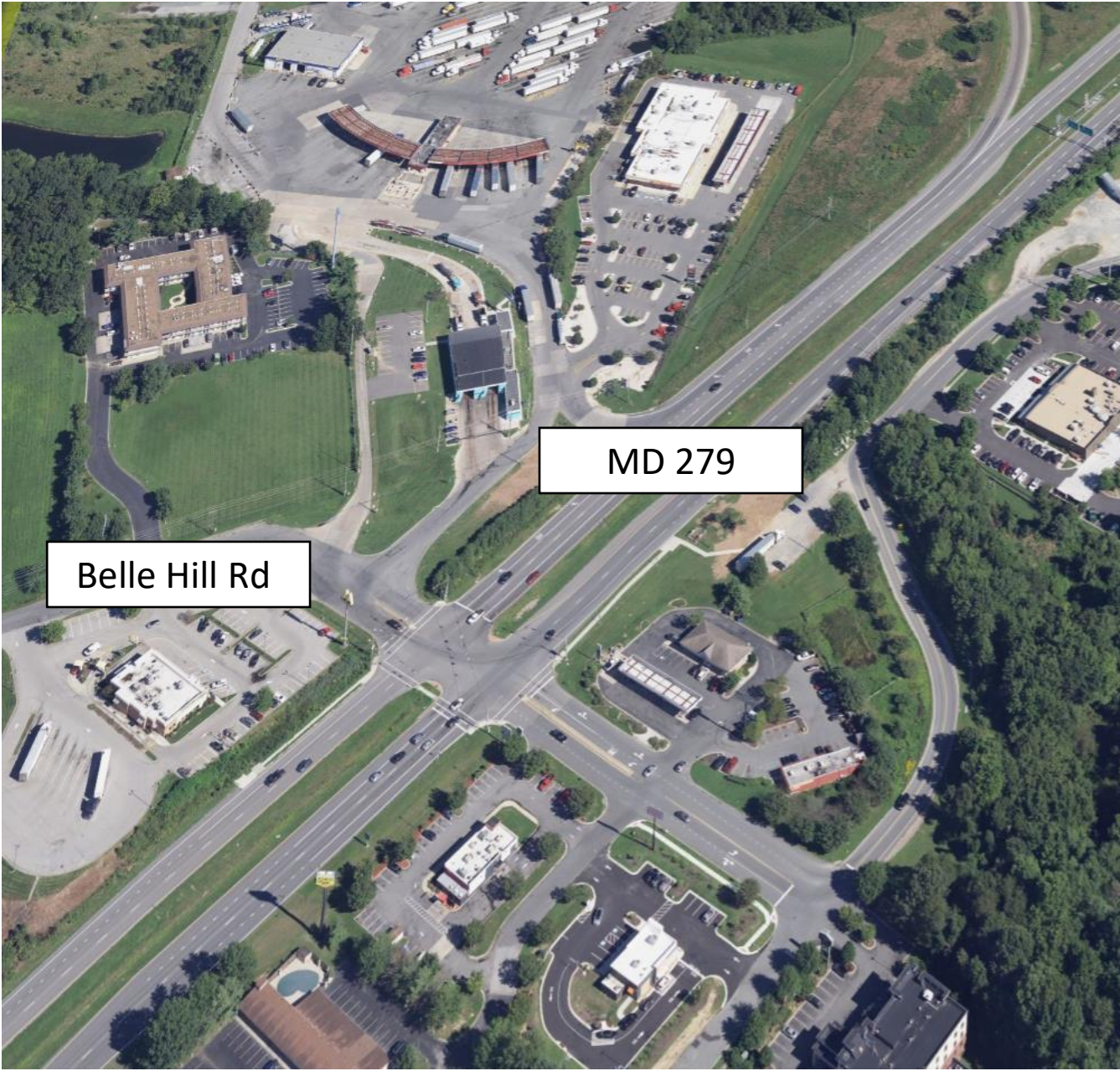
# East Elkton Plan

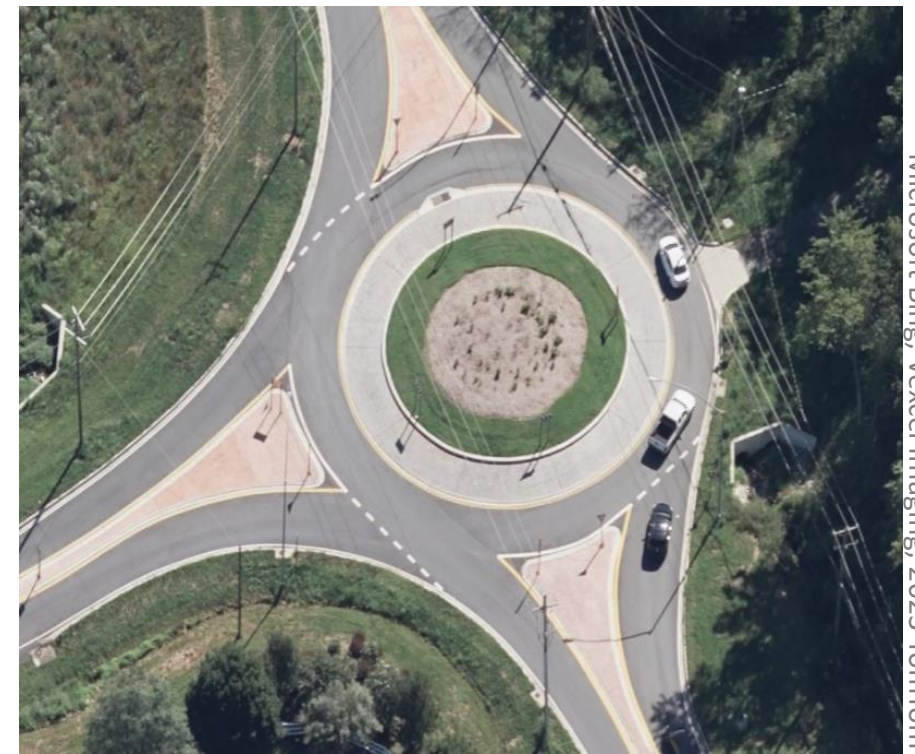
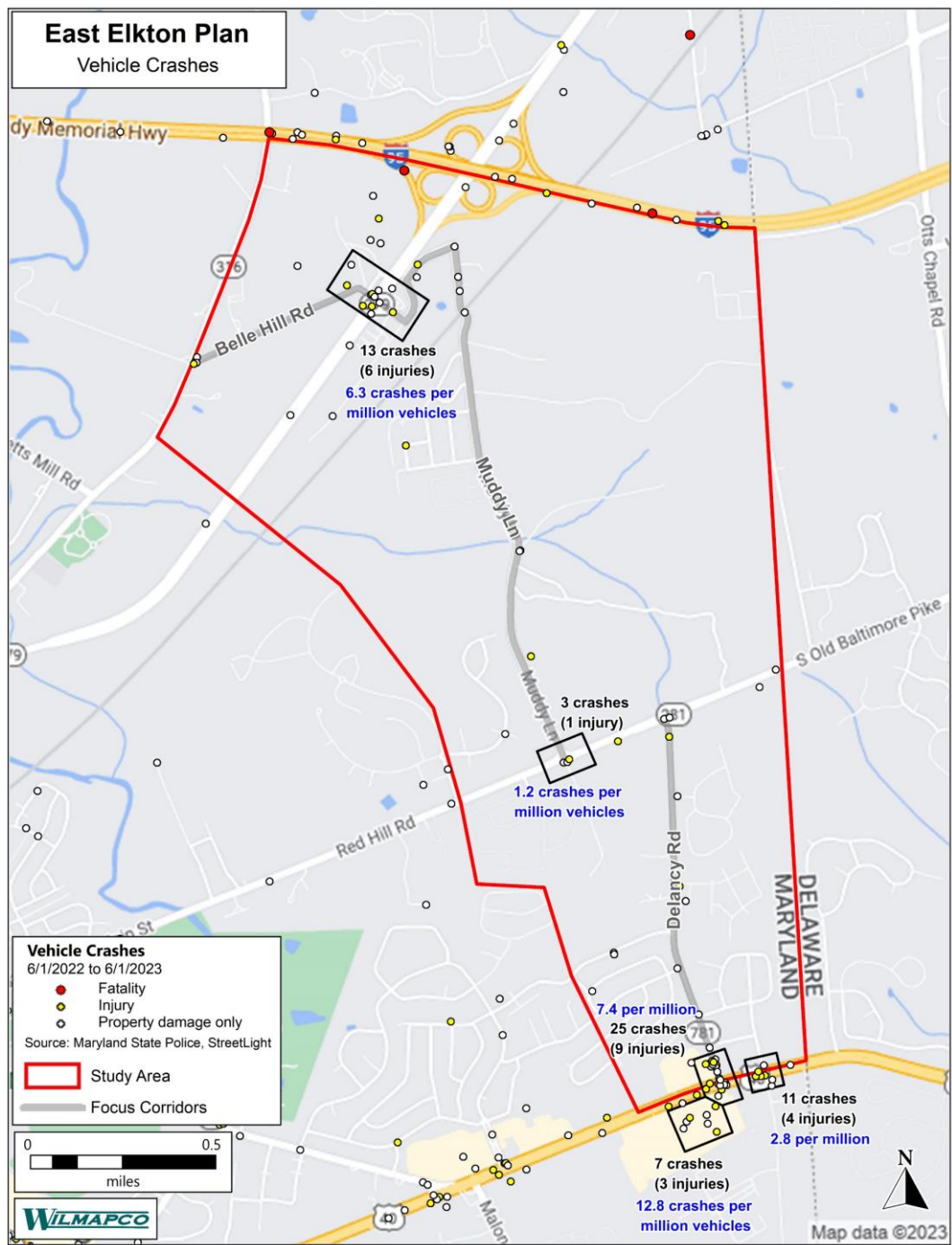
Zoning



**Zoning**  
Cecil County and Town of Elkton, December 2022

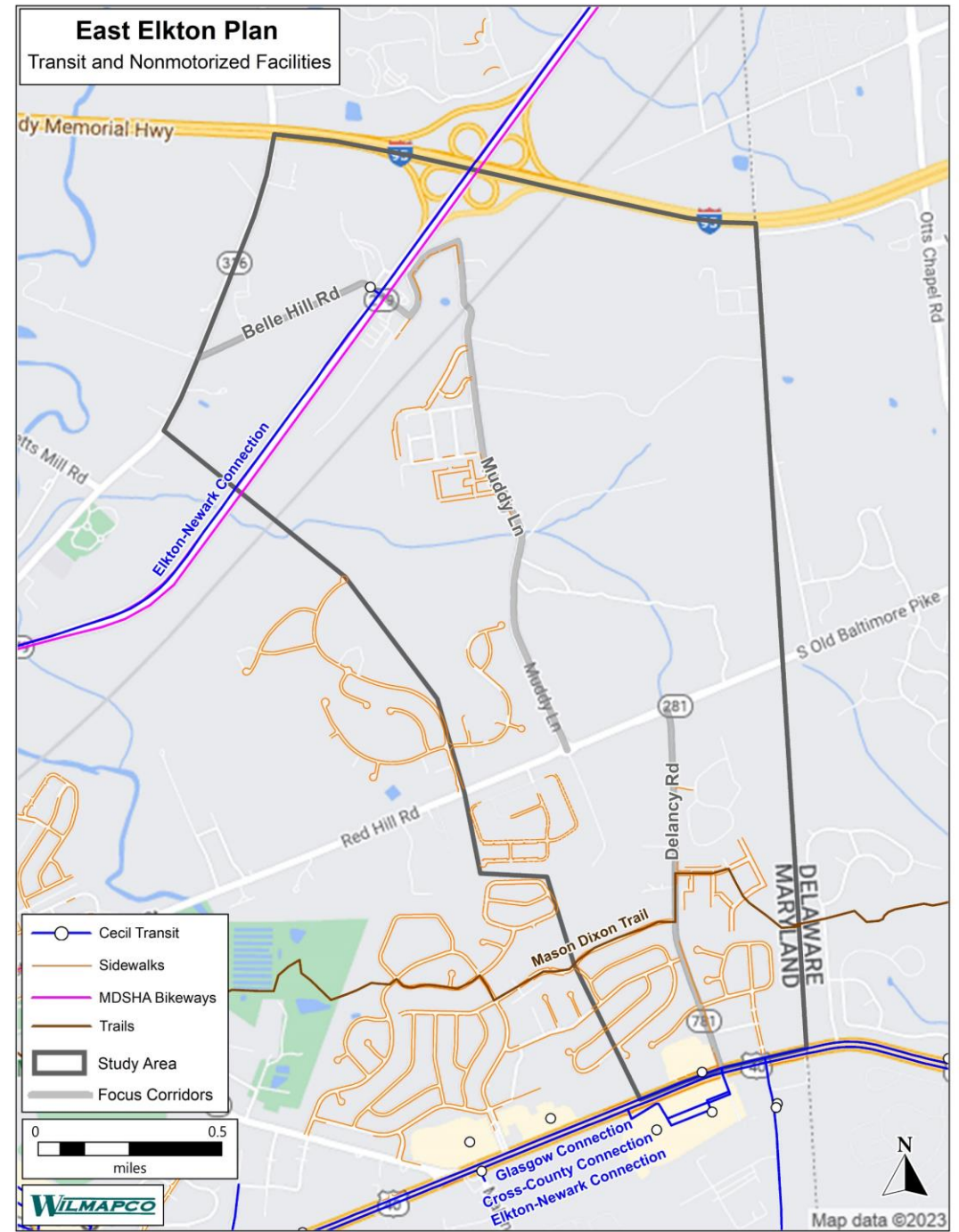
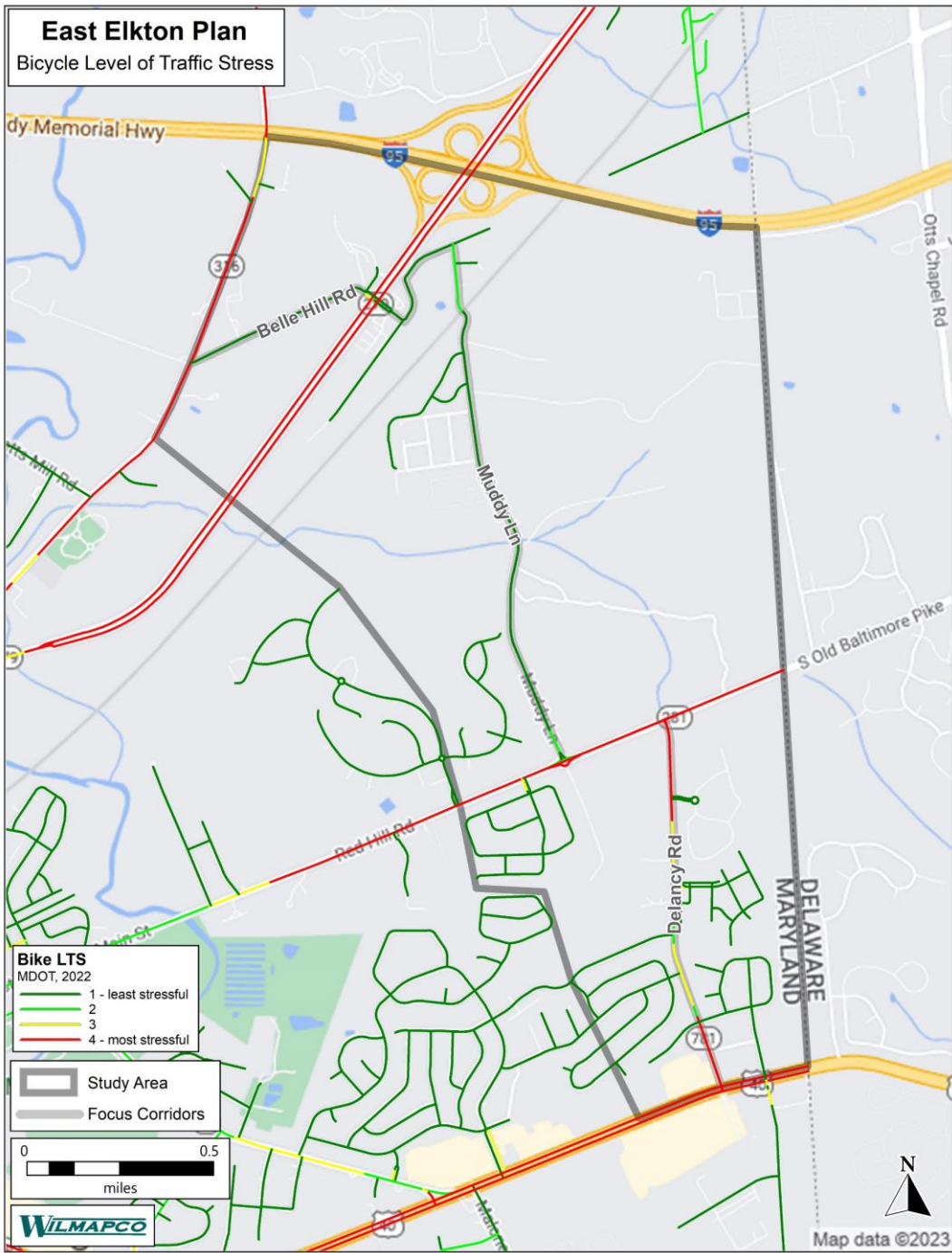
Light Blue	Business
Purple	Commercial
Light Purple	Light Industrial
Medium Purple	Heavy Industrial
Orange	Low or Medium Density Residential
Red	High Density Residential
Green	Open Space
Grey	Data unavailable





Microsoft Bing, Vexcel Imaging, 2023 TomTom





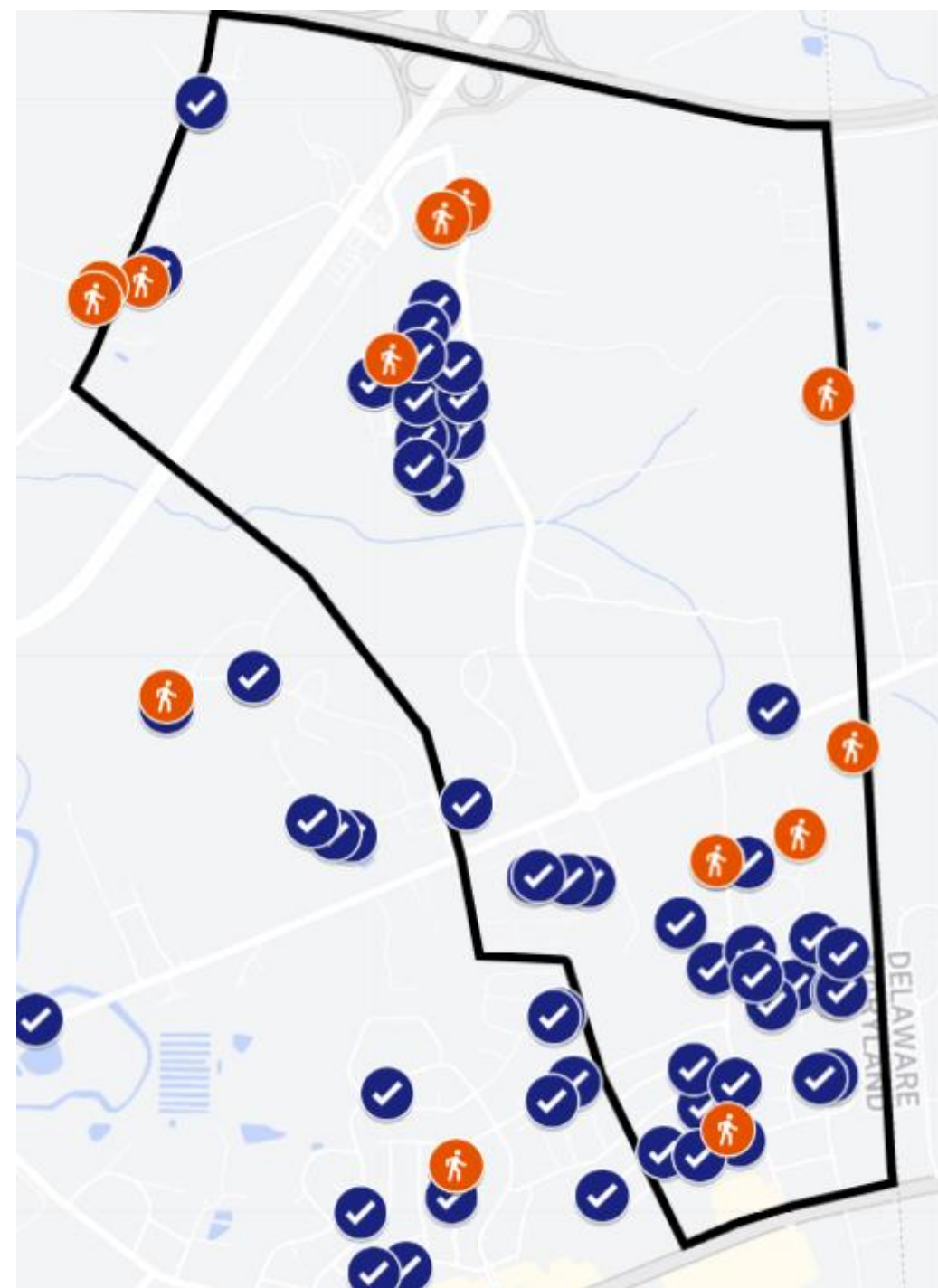
# Community Engagement Highlights

- Two surveys
- Youth engagement
- Direct mailing of survey & workshop notice to TJ areas
- Public workshops w/full presentation online
- Key stakeholder engagement





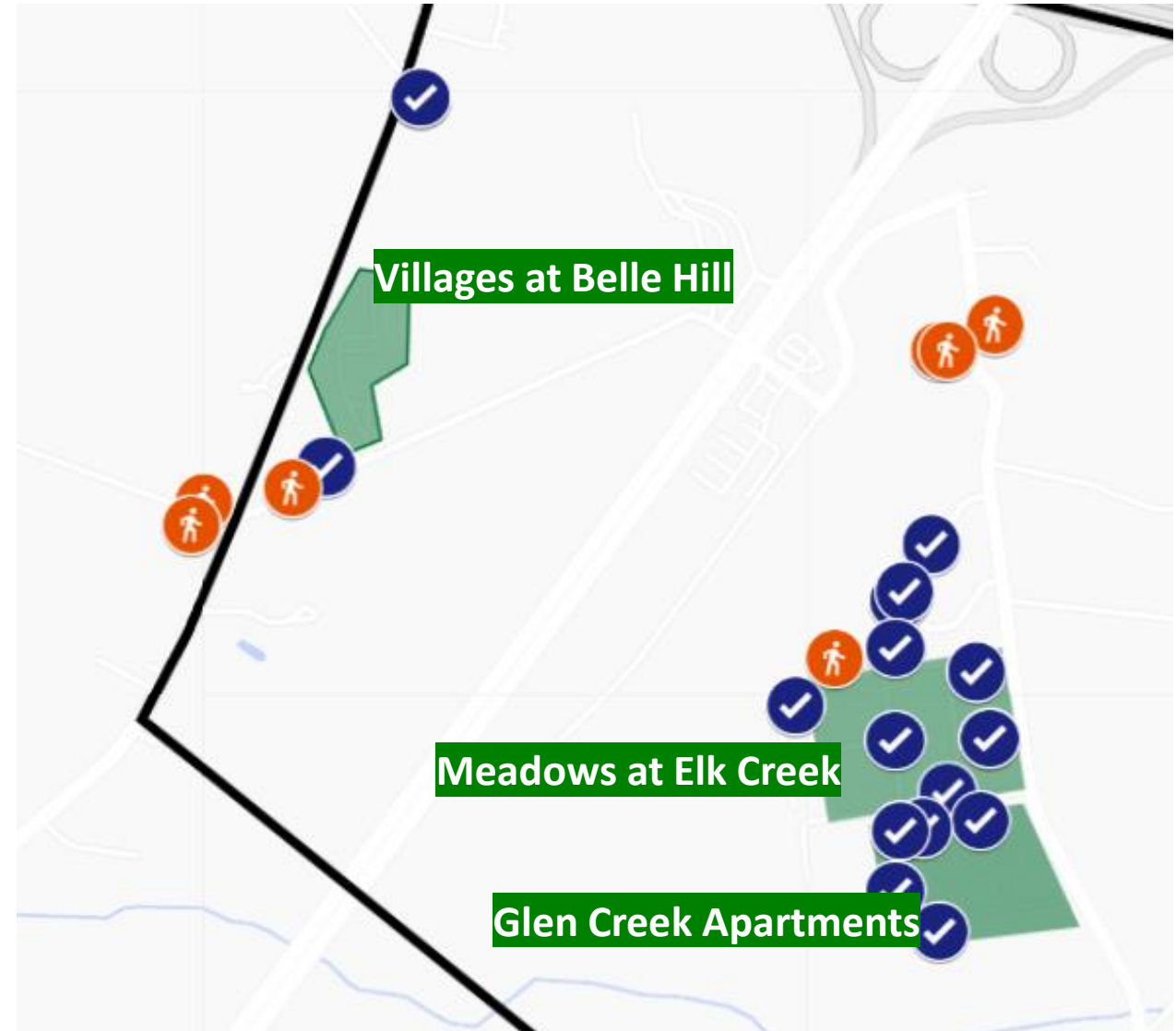
# Outreach Participants

- ✓ **Survey 1** – 121 responses
- 🚶 **Workshop 1** – 22 attendees



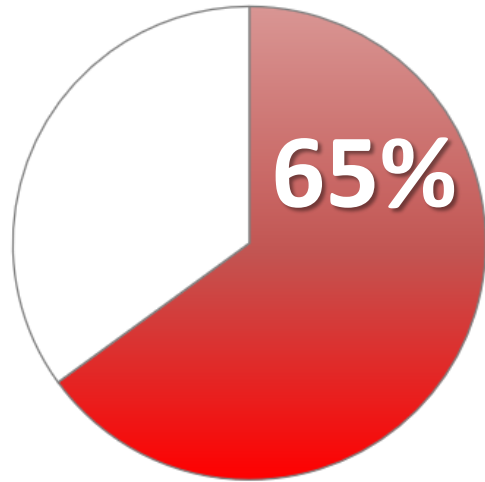
# TJ Area Outreach Participants

-  Survey 1
-  Workshop 1

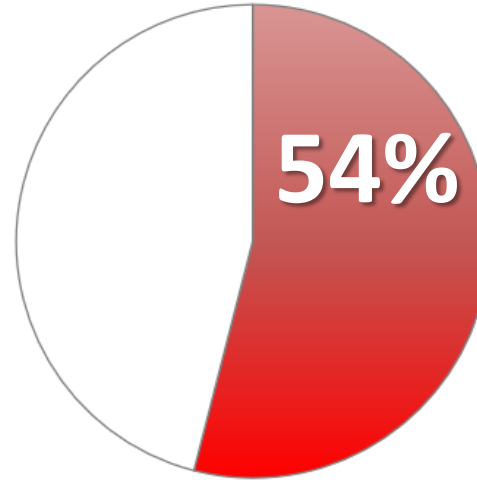


# “Very Concerned” about Traffic Safety

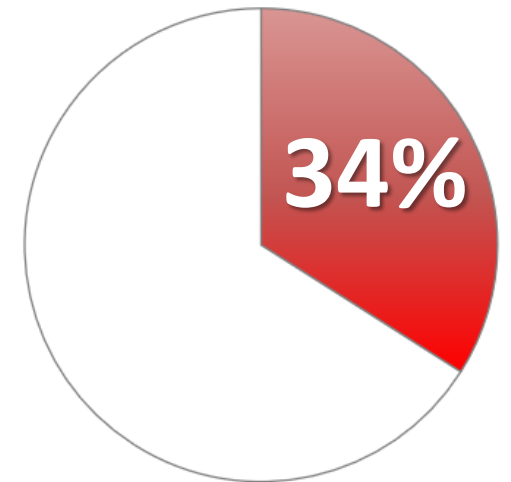
Delancy Road



Muddy Lane

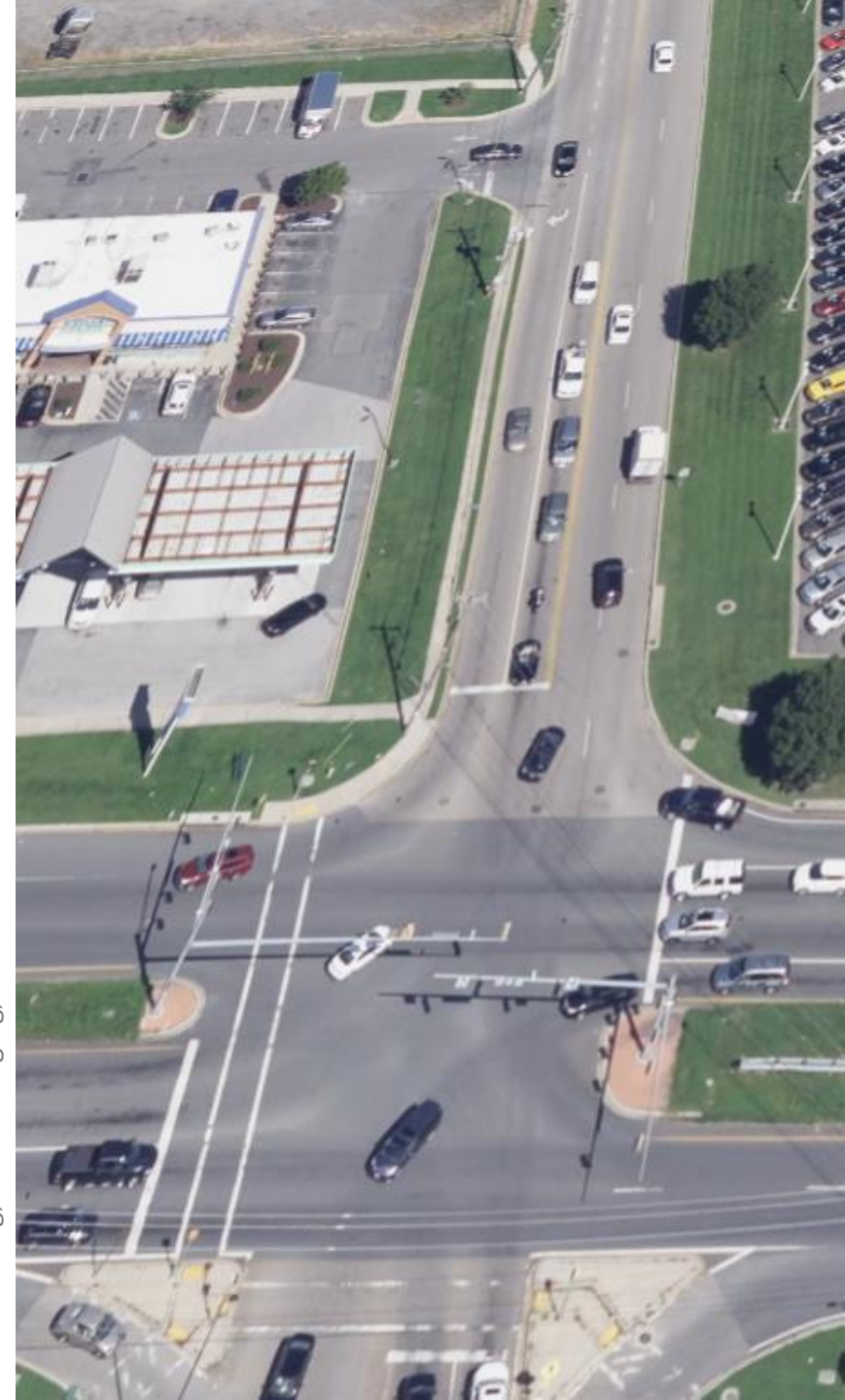


Belle Hill Road



# Delancy Road - Concerns

- Traffic volume and speeding
- Lack of walking and cycling paths
- Traffic management @ Royal Farms
- Blind spots
- Lighting



# Muddy Lane - Concerns

- Traffic volume and speeding
- Narrow lanes
- Lack of walking and cycling paths
- Traffic management @ Amtrak Underpass
  - Narrowness/visibility
  - Trucks getting stuck
- Lighting



# Belle Hill Road – Concerns

- Heavy trucks
  - Creating delays / getting stuck
- Blind spots and tight corners
- Commuter traffic
- Lack of walking and cycling paths
- Crime
- Lighting



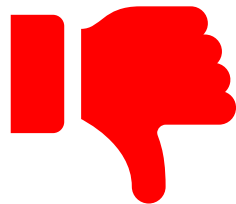
# I'd like to walk / bike to . . .

- Downtown
- Shopping (Royal Farms, Walmart, Aldi, etc.)
- Meadow Park, Iron Hill, and Glasgow Park
- Residential neighborhoods

# Land Uses Nearby your Home



Retail, restaurants, healthcare,  
community facilities



Truck stops, warehouse and storage  
facilities, office buildings

# Planning Process

## Existing Conditions

- Traffic
- Land Use



## Visioning

- Survey 1
- Workshop 1



## Draft Recommendations

- Workshop 2
- Survey 2

## Select Recommendations

- Workshop 3



[wilmapco.org/east-elkton](http://wilmapco.org/east-elkton)