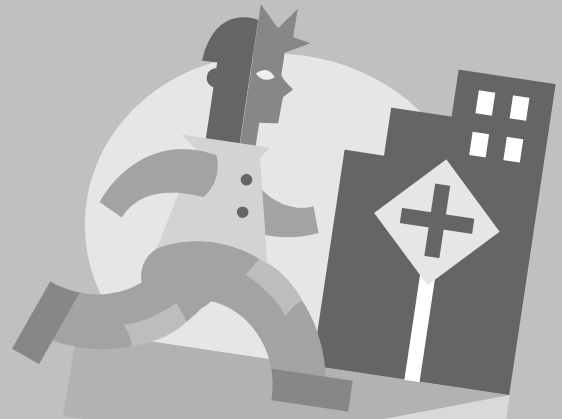


Join us for an important event to enhance your community!

Southbridge Walkable Community Workshop



WHEN:

Tuesday, September 19
5:30 pm—Light dinner available
6 pm—Presentation & workshop

WHERE:

Neighborhood House
1218 B St.
Wilmington, DE 19801

Please join us!

*(workshop is FREE, but space is limited —
please RSVP to sign up)*

To RSVP contact WILMAPCO:
Phone 737-6205 ext. 10
Email hdunigan@wilmapco.org

Childcare is available upon prior request

You are invited to this workshop because you are a key resource needed to make our walkability campaign succeed. This event brings together elected officials, citizens, and professionals in the fields of planning, engineering, law enforcement, public health and education and will provide information on how to turn your community into the kind of pedestrian-friendly place we all like to experience. The program combines a practical presentation on the latest urban designs with nitty-gritty fieldwork where participants apply what they've learned.

This workshop will complement efforts by the South Wilmington Special Area Management Plan to make Southbridge a safe and attractive community. Please wear comfortable shoes and clothing suitable for the weather that day. To learn more about the program call WILMAPCO or visit www.wilmapco.org/walk.

Sponsored by the Southbridge Civic Association, DNREC Delaware Coastal Programs and WILMAPCO