

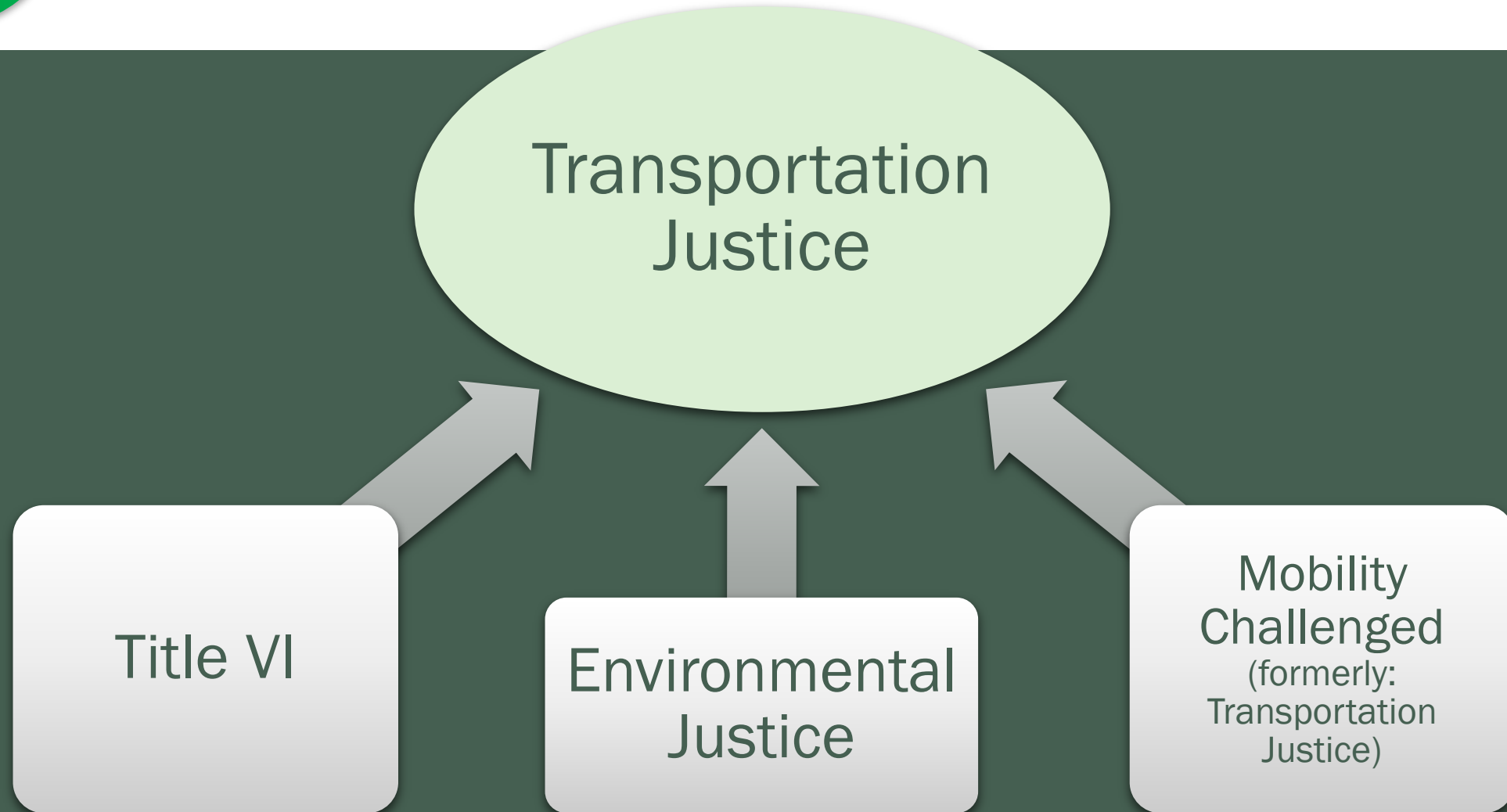


**WILMAPCO**

# 2019 Transportation Justice & Title VI Report



# Putting it all together





# Transportation Justice & Title VI Report

## Title VI and Environmental Justice Analysis

- *Low-income and racial/ethnic minorities*
- Introduction
- Basic reporting requirements
- Demographic profile
- Public opinion survey
- Spatial analysis
- Public outreach
- Key recommendations



# Transportation Justice & Title VI Report

## Mobility Challenged Analysis

- *Seniors, disabled, and zero-car households*
- Introduction
- Demographic profile
- Spatial analysis
- Public outreach
- ADA implementation
- Key recommendations



# Transportation Justice & Title VI Report

## Language Assistance Plan

- *Limited English Proficiency/Low Literacy*
- Introduction
- Demographic Profile
- Spatial analysis
- Public outreach
- Key recommendations



# Language Assistance Plan



# LEP and LL Communities

- Limited English Proficient (LEP)
  - Population >5 years who speak English “less than very well”
    - 20,600 (3.8% of population) in 2000
    - 26,800 (4.4% of population) today





# LEP and LL Communities

- Low Literacy (LL)
  - Population >25 years with less than a 9<sup>th</sup> grade education
    - 13,800 in 2000
    - 12,400 today

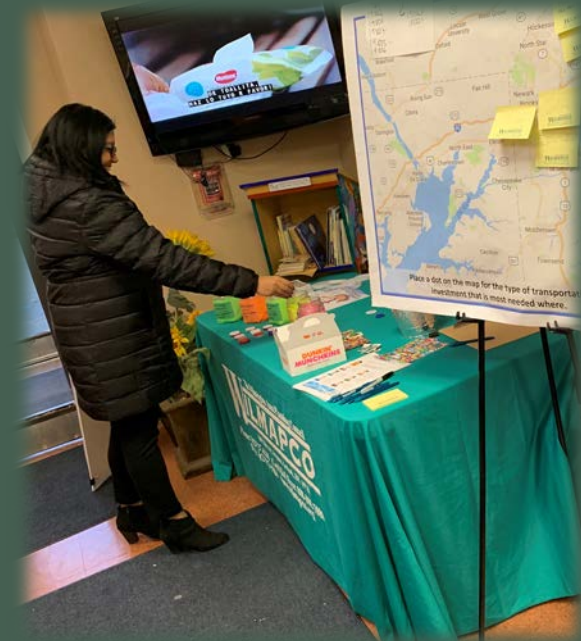






# Safe Harbor Provision

- Provide reasonable interpretation, translation, and outreach to LEP communities that
  - Exceed 5% of region's population, or
  - >1,000 people





# Safe Harbor Provision

## *Speak English "Less Than Very Well"*

	New Castle County	Cecil County	WILMAPCO Region
Spanish	14,500	827	15,327
Chinese (incl. Mandarin, Cantonese)	3,324	77	3,401
Other Indo-European	2,813	168	2,981
Other Asian and Pacific Island	1,224	132	1,356
French, Haitian, or Cajun	707	19	726
Korean	612	100	712
Russian, Polish, or other Slavic	439	143	582
Other and Unspecific	550	0	550
Vietnamese	433	0	433
Arabic	333	6	339
Tagalog (incl. Filipino)	179	40	219
German, or other West German	175	4	179



# LEP Clusters Definitions

- Use available data: 2012-2016 American Community Survey
- Census block group level analysis





# LEP Area Definitions

## LEP CLUSTER

1. Percentage of the population over 5 who speak English less than “Very Well” exceeds 3x the regional average
  - PLUS - adjoining block groups with a percentage of the population over 5 who speak English less than “Very Well” exceeding 2x the regional average

## LANGUAGE SCREEN

- Spanish (high % of Hispanics)
- Asian (high % of Asian)
- Spanish/Asian mixture (high % of both Hispanic and Asian)

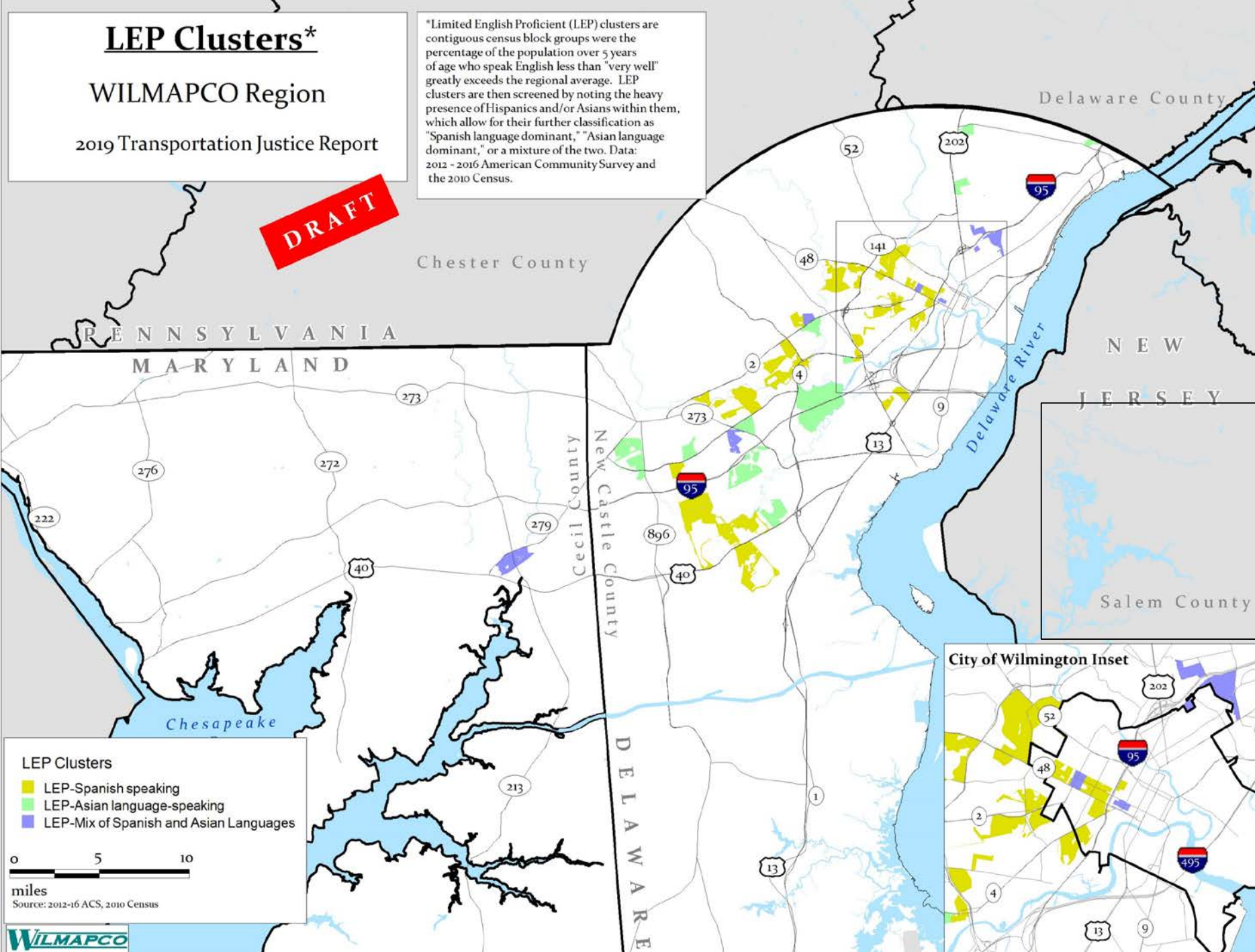
# LEP Clusters\*

## WILMAPCO Region

2019 Transportation Justice Report

\*Limited English Proficient (LEP) clusters are contiguous census block groups where the percentage of the population over 5 years of age who speak English less than "very well" greatly exceeds the regional average. LEP clusters are then screened by noting the heavy presence of Hispanics and/or Asians within them, which allow for their further classification as "Spanish language dominant," "Asian language dominant," or a mixture of the two. Data: 2012 - 2016 American Community Survey and the 2010 Census.

**DRAFT**



- LEP Clusters
- LEP-Spanish speaking
  - LEP-Asian language-speaking
  - LEP-Mix of Spanish and Asian Languages



Source: 2012-16 ACS, 2010 Census





# LL Area Definitions

## LL CLUSTER

1. Percentage of the population over 25 with less than a 9th grade education exceeds 3x the regional average
  - PLUS - adjoining block groups with a percentage of the population over 25 with less than a 9th grade education exceeding 2x the regional average

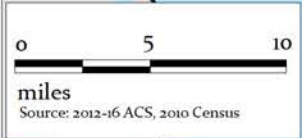
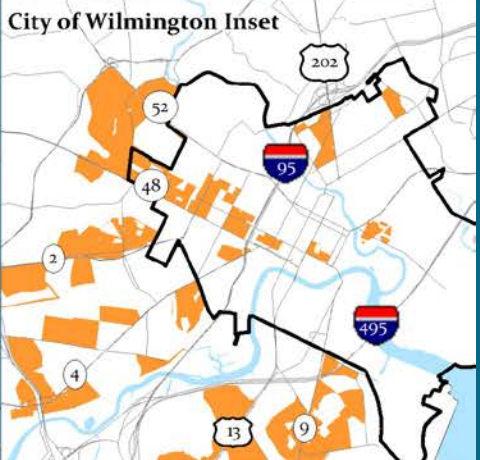
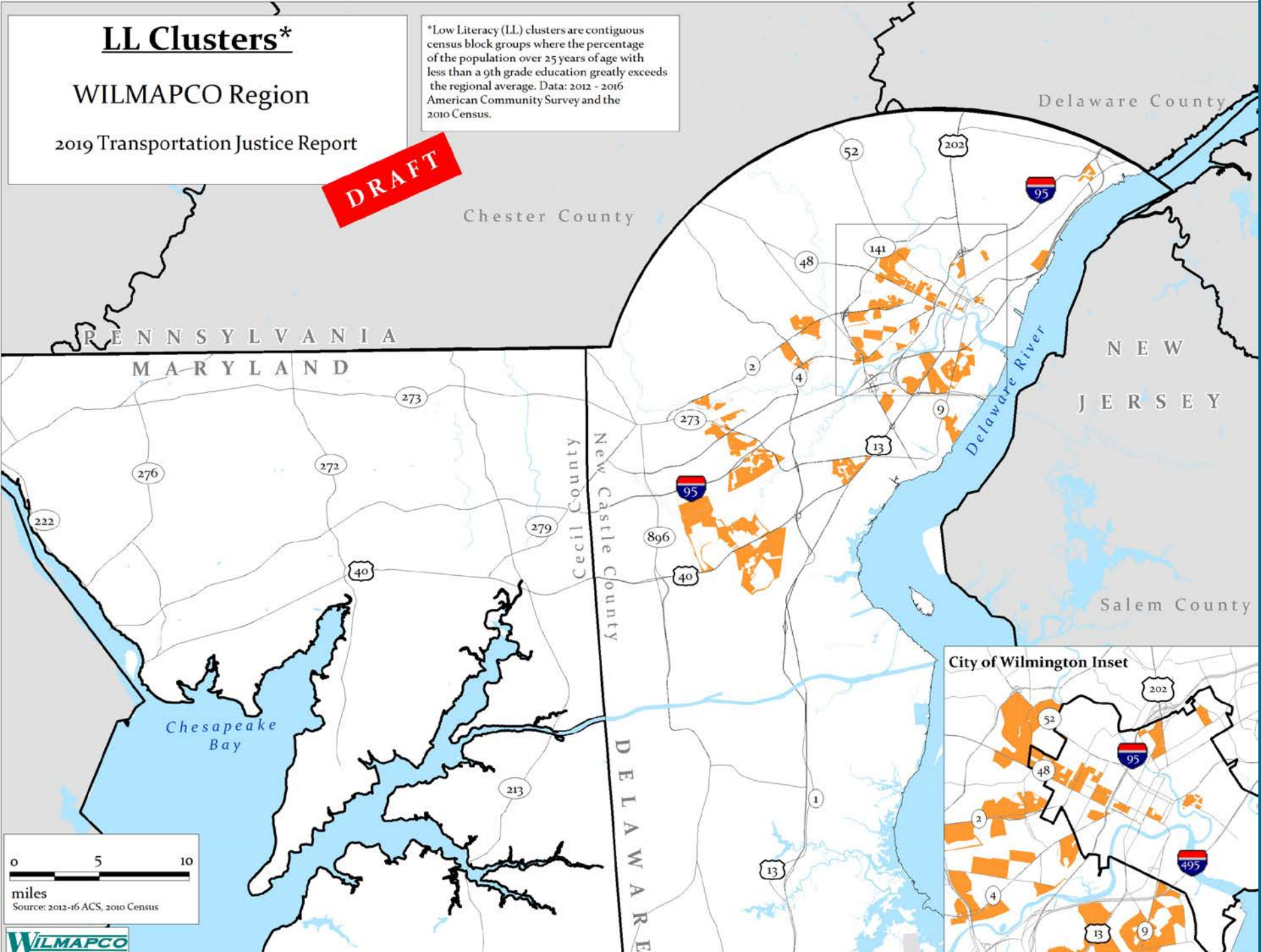
# LL Clusters\*

## WILMAPCO Region

2019 Transportation Justice Report

**DRAFT**

\*Low Literacy (LL) clusters are contiguous census block groups where the percentage of the population over 25 years of age with less than a 9th grade education greatly exceeds the regional average. Data: 2012 - 2016 American Community Survey and the 2010 Census.





# 4-Factor Analysis

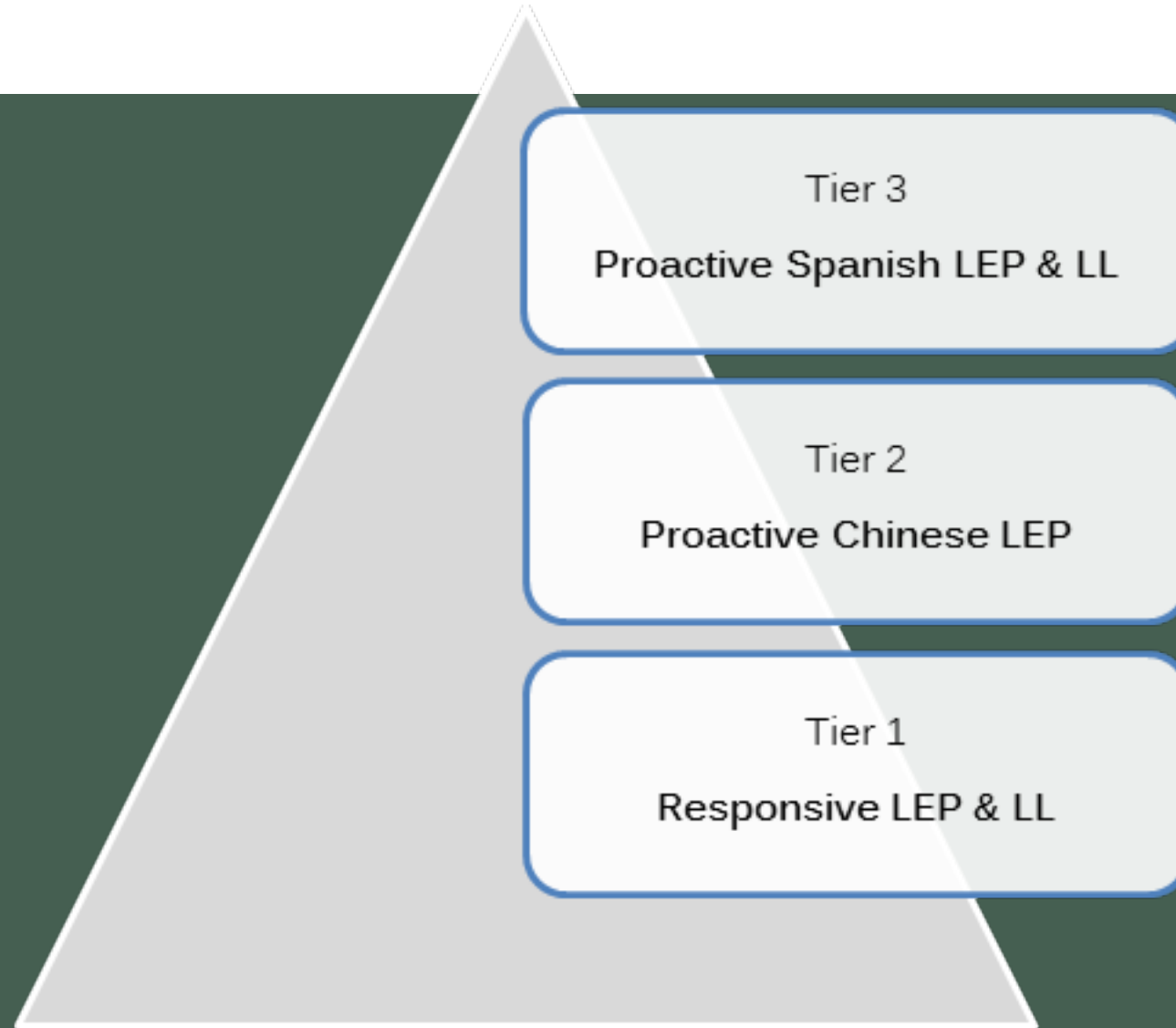
- 1: How many are encountered/eligible
- 2: Frequency of contact
- 3: Importance of services
- 4: Resources and the cost of providing access







# Language Assistance Plan





## Tier 1 Service

- Ensure website is translatable
- Interpretation of *any document*, in *any language*, if requested
- Arrange to follow up with LEP individuals at public meetings
- Collect feedback orally for LL individuals at public meetings



## Tier 2 Service

- Non-discrimination assurances and complaint form/procedures available in Chinese
- Chinese “about WILMAPCO” webpage
- Plans translated into Chinese, upon request
- Continue to pursue partnerships with Chinese American institutions and media



## Tier 2 Service (continued)

- If a study is within an LEP Asian cluster w/Chinese as a dominant secondary language
  - Top-level study materials translated into Chinese
  - Partner with institutions to encourage Chinese LEP participation
  - Have a Chinese interpreter (preferably community member) at workshops



## Tier 3 Service

- Non-discrimination assurances and complaint form/procedures available in Spanish
- Spanish “about WILMAPCO” webpage
- Plans translated into Spanish, upon request
- Continue to build partnership with Latin American Community Center, the Delaware Hispanic Commission, and Spanish media



## Tier 3 Service (continued)

- Continue to provide notices to Spanish media
- Consider Hispanic outreach consultant for outreach strategies

**Comparta sus ideas para  
mejorar el transporte**



**2050**  
REGIONAL  
TRANSPORTATION PLAN



## Tier 3 Service (continued)

- If a study is within an LEP Spanish cluster, or if it is regional in scope
  - Top-level study materials translated into Spanish
  - Partner with institutions to encourage Spanish LEP participation
  - Have a Spanish interpreter (preferably community member) at workshops



## Tier 3 Service (continued)

- If a study is within an LL cluster, or if it is regional in scope
  - Must have visual and/or oral –based outreach and feedback opportunities
- If a study is not within an LL cluster
  - Should have visual and/or oral –based outreach and feedback opportunities





# Timeline

- Analysis to proceed through Spring 2019 with draft by Summer 2019
- Will follow on the heels of the 2050 RTP
- Projected Council endorsement in November 2019



