



2019 Transportation Justice & Title VI Report

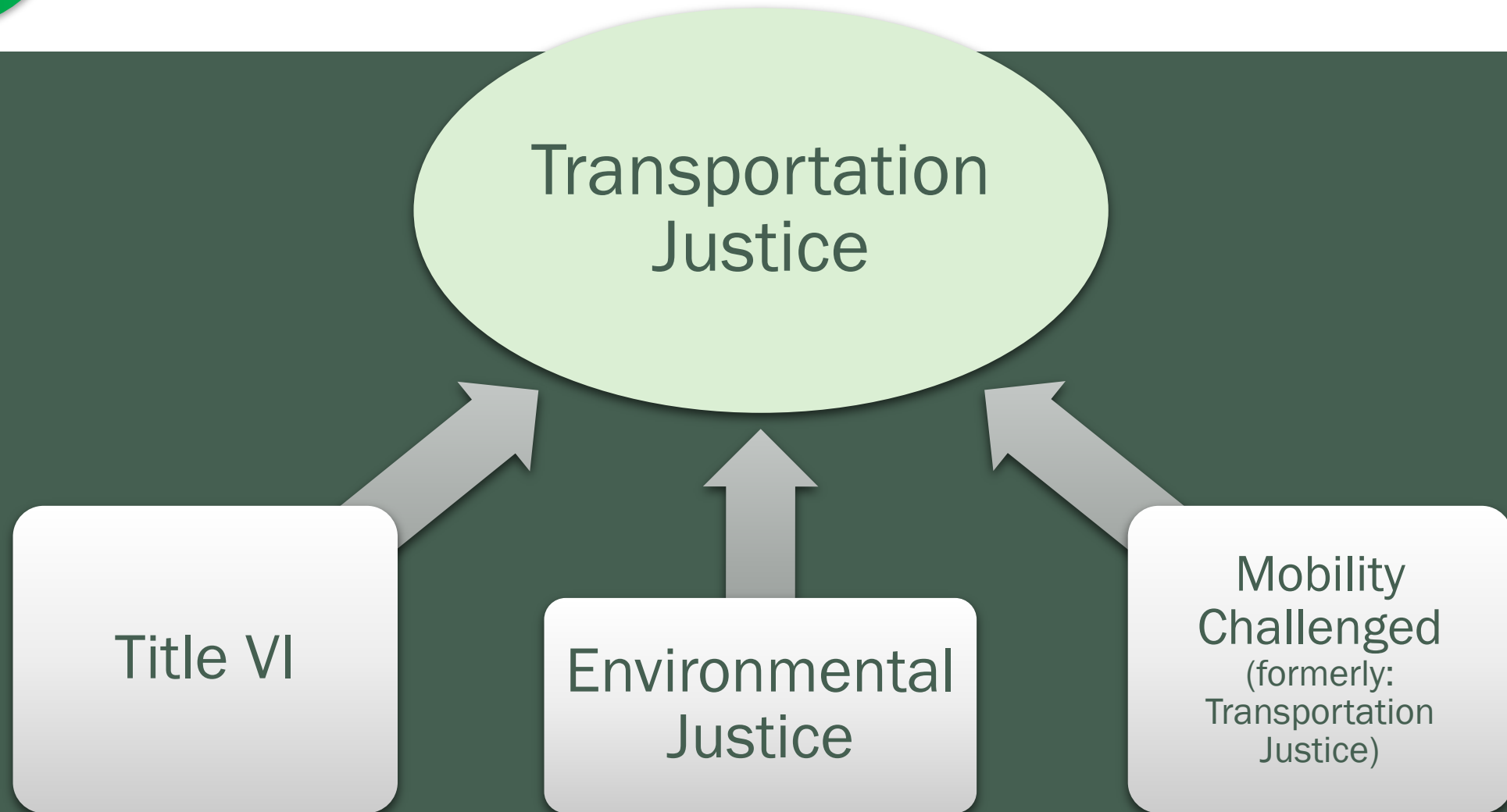


Title VI, EJ, and TJ . . . “Oh my!”





Putting it all together





Transportation Justice & Title VI Report

- Update to 2013 EJ/Title VI Report and 2015 TJ Report
- Satisfy all requirements (and hopefully requests, too!)
- New analyses -- particularly around multimodal connectivity
- More streamlined
 - Less project justification
 - Fewer background statistics
- Guided by working group



Transportation Justice & Title VI Report

- Executive Summary
- Background
- **Part 1: Environmental Justice**
 - Introduction, spatial analysis, public participation
 - **Title VI Plan Summary** – full plan in Appendix
- **Part 2: Mobility Challenged**
 - Introduction, spatial analysis, public participation
- Summary of Recommendations





Public Opinion Survey



Public Opinion Survey

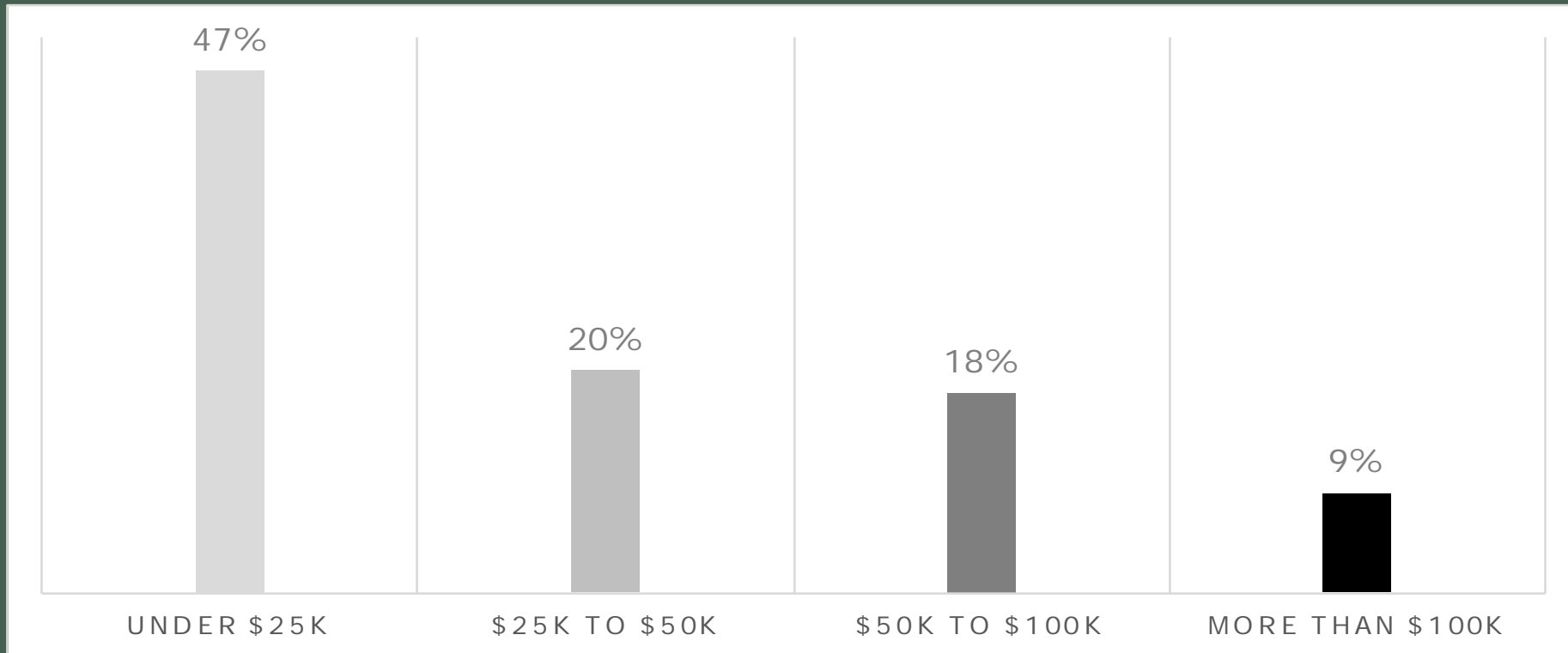
- Telephone survey sample of 600 residents
 - Reflective of population
 - Stronger demographic quotas now in place
- Opinions of transportation system and policy
- Revamped in 2017 for the *2050 Regional Transportation Plan*





Public Opinion Survey

Transportation sometimes keeps me from activities





Public Opinion Survey

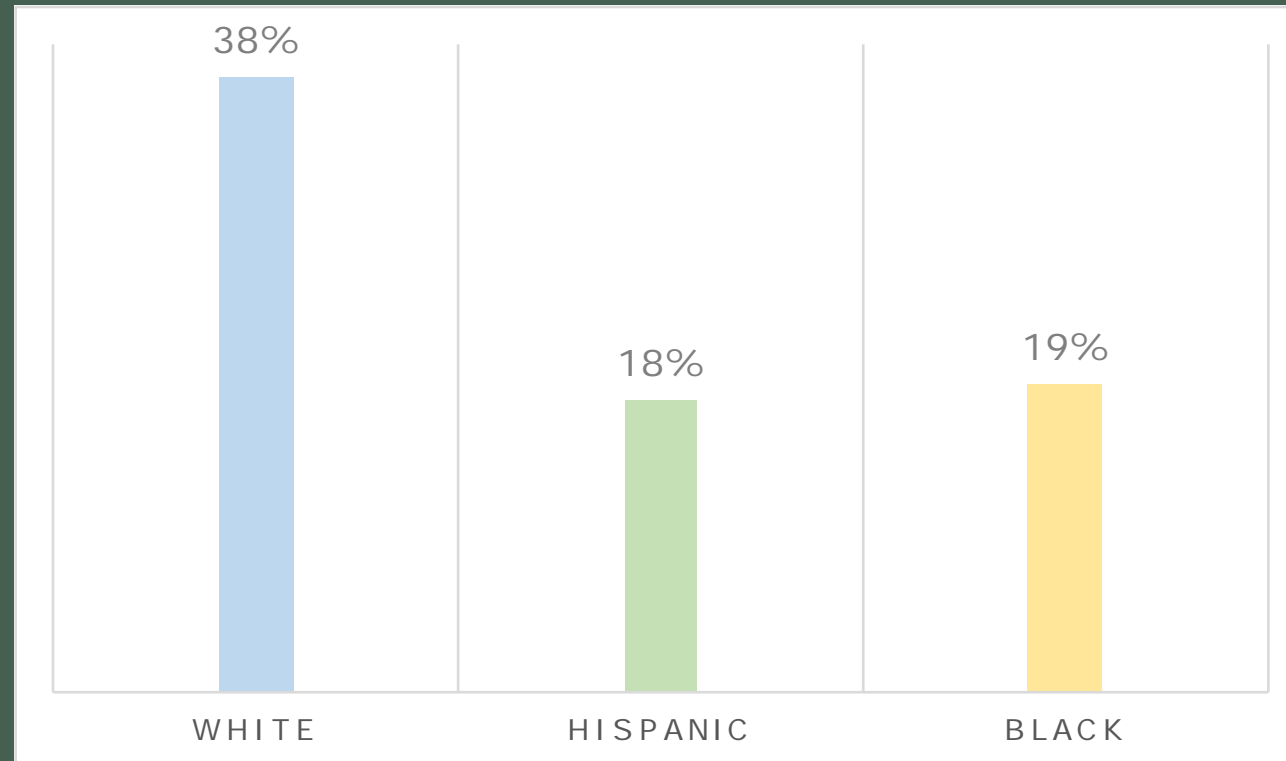
I have heard of WILMAPCO





Public Opinion Survey

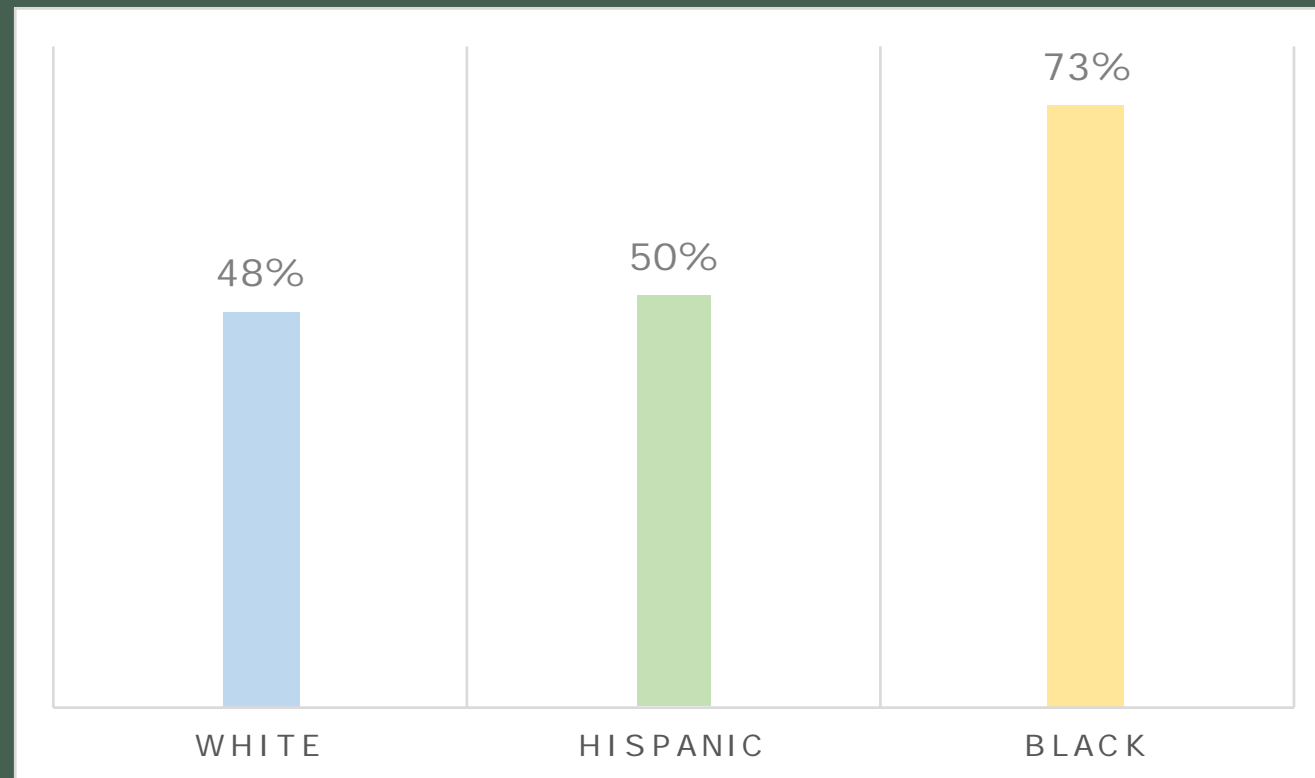
I have heard of WILMAPCO





Public Opinion Survey

Improving bus service “very important”





Spatial Analysis



New EJ Area Definitions

- Use latest available data: 2012-2016 American Community Survey (ACS)
- Census block group level analysis. Locate **heaviest concentrations** of EJ groups. Work to ID other areas not captured by ACS.
- Tweak methodology
 - More inclusive for places home to high percentages of low income or minority groups only (not in combination)



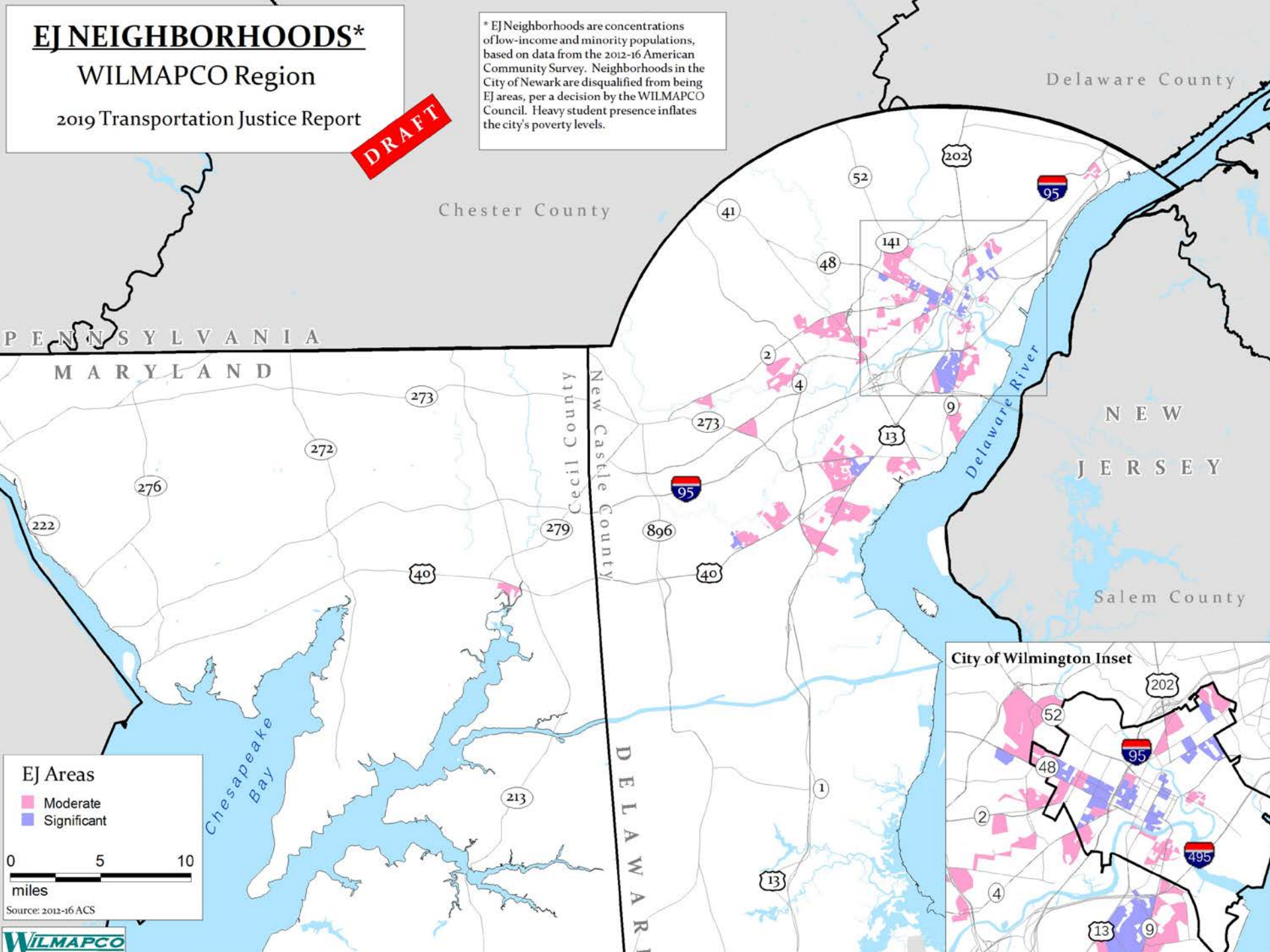
EJ NEIGHBORHOODS*

WILMAPCO Region

2019 Transportation Justice Report

DRAFT

* EJ Neighborhoods are concentrations of low-income and minority populations, based on data from the 2012-16 American Community Survey. Neighborhoods in the City of Newark are disqualified from being EJ areas, per a decision by the WILMAPCO Council. Heavy student presence inflates the city's poverty levels.



EJ Areas

- Moderate
- Significant

0 5 10 miles

Source: 2012-16 ACS

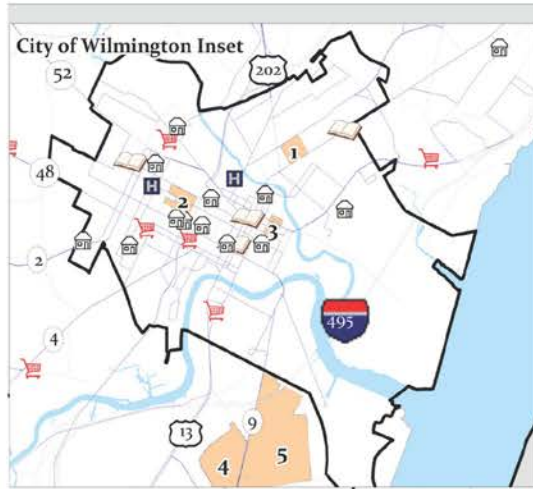




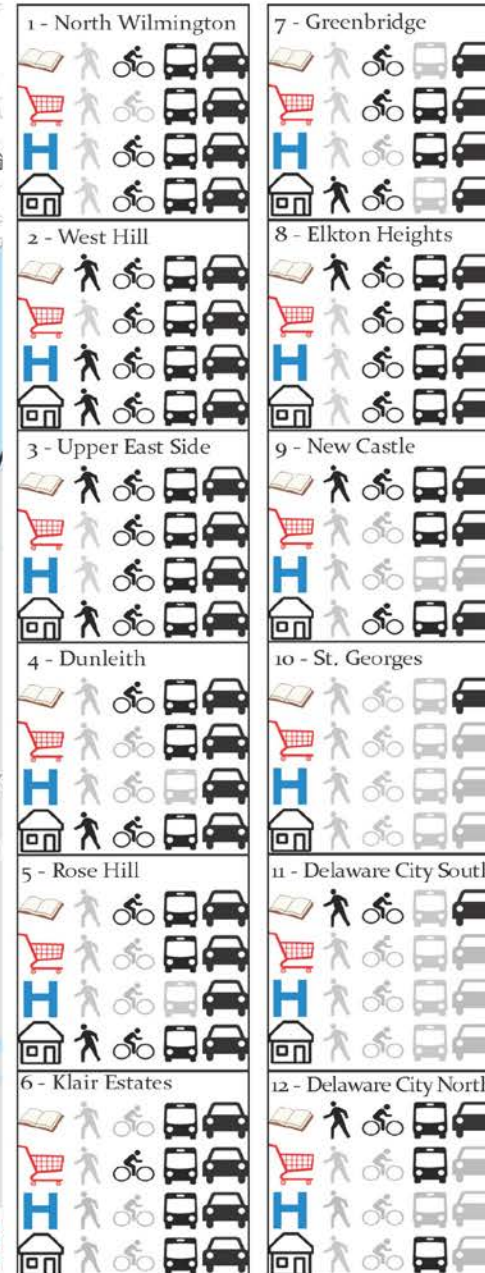
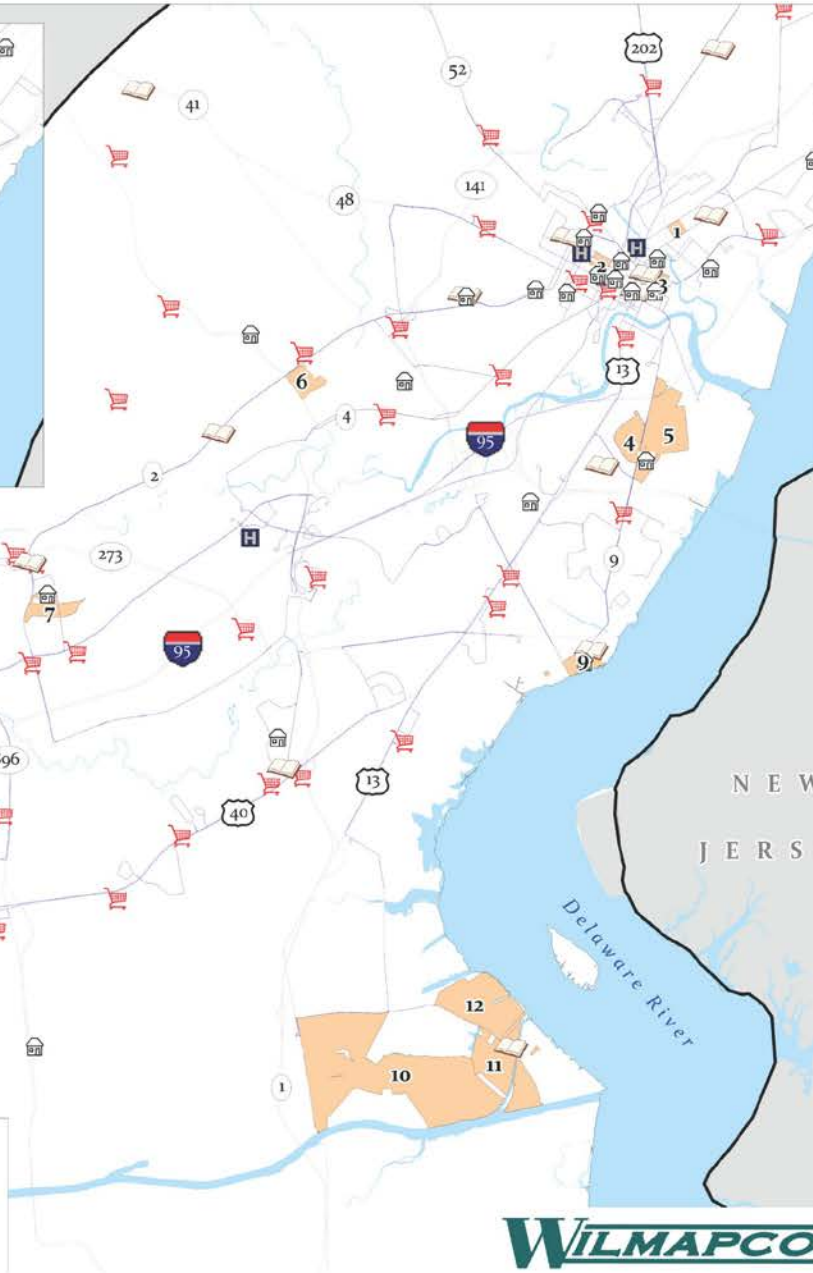
Planned EJ Analysis

- Multi-modal connectivity analysis – low-wage employment, grocery stores, libraries, hospitals, senior centers vs. EJ areas (UD analysis)
- Food desert bus connectivity to supermarkets
- Location efficiency (CNT); travel time
- Health impacts (via Policy Map and SDOH)
- TIP project equity
- Public bus affordability
- Crash rates
- SLR exposure





CONNECTIVITY ANALYSES
WILMAPCO Region
2015 Transportation Justice Report



WILMAPCO



TJ Analysis: Connectivity

- Extended analysis: all regional block groups to destinations (calculated at housing unit level) by mode
- Block groups with TJ and MC and other variables flagged for equity analysis
- Rich regional AND equity based analyses





TJ Analysis: Connectivity



Libraries



Community
centers



Urgent care



Low-wage
job centers



Senior centers



Medical
centers



Grocery stores



State Service
Centers



Pharmacies



TJ Analysis: Connectivity





TJ Analysis: Connectivity



10 minute accessible walking trip



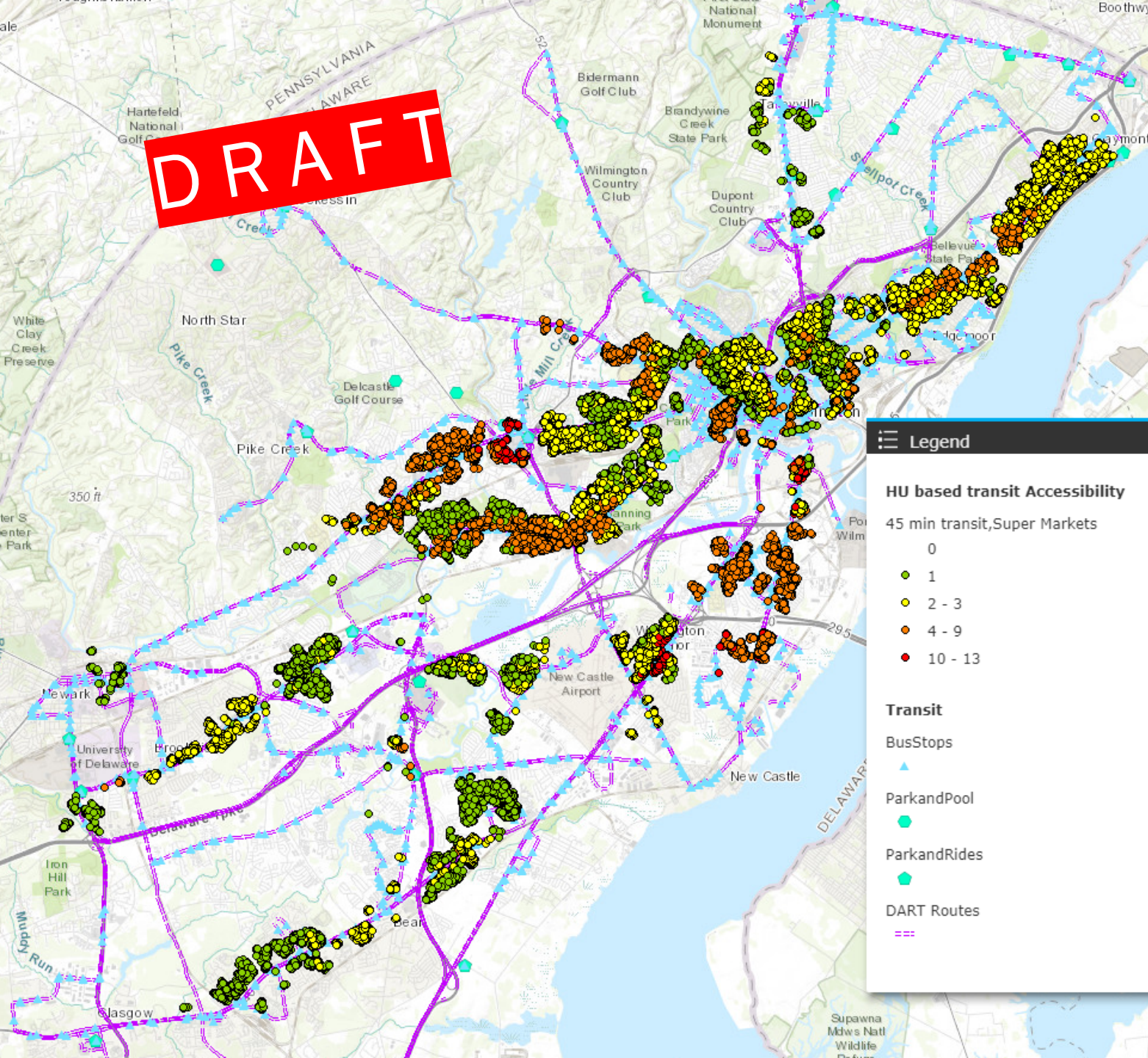
10 minute accessible biking trip



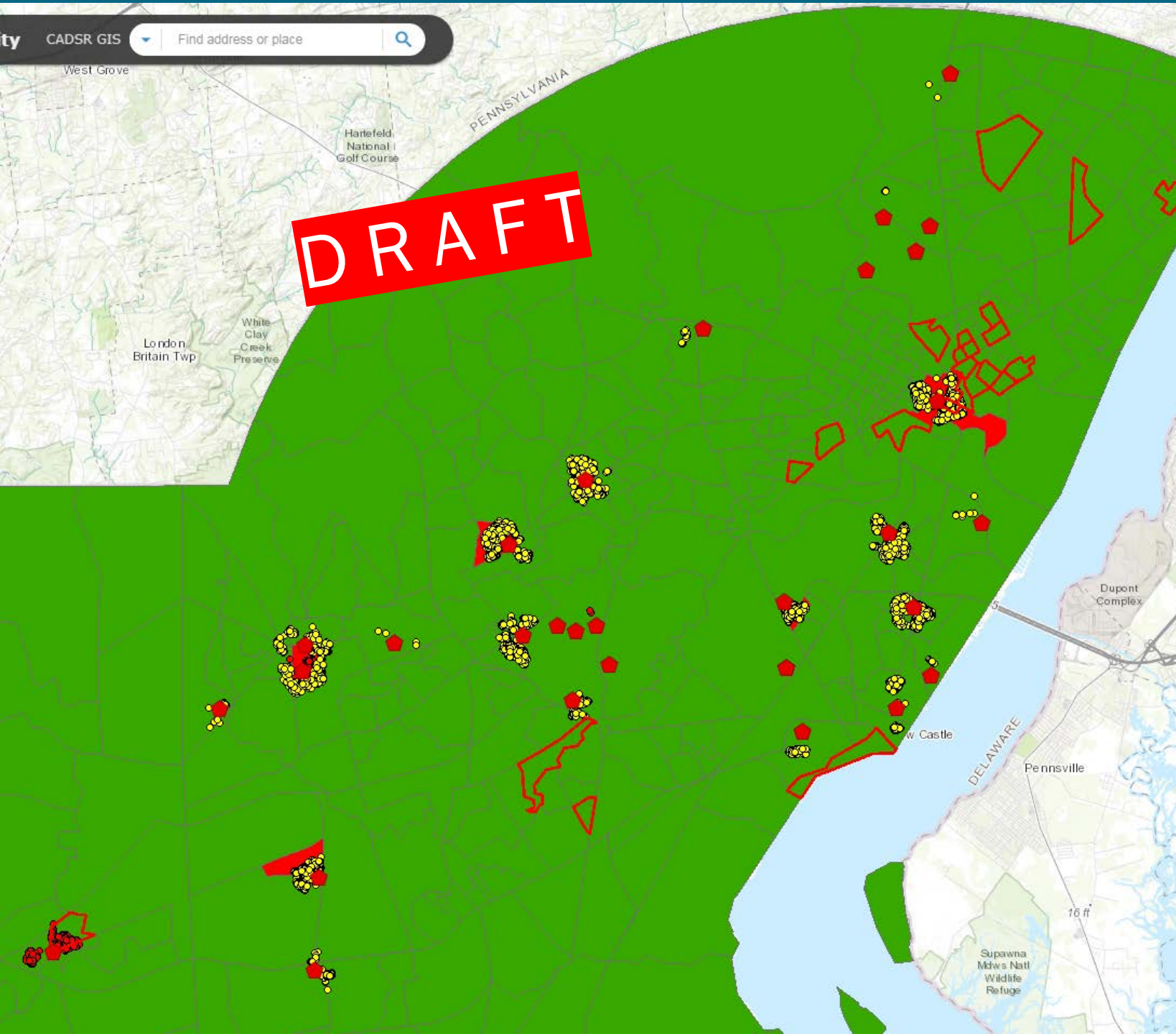
15 minute accessible car trip



45 minute accessible, one-way bus trip
(including no more than 15 mins walking, total)



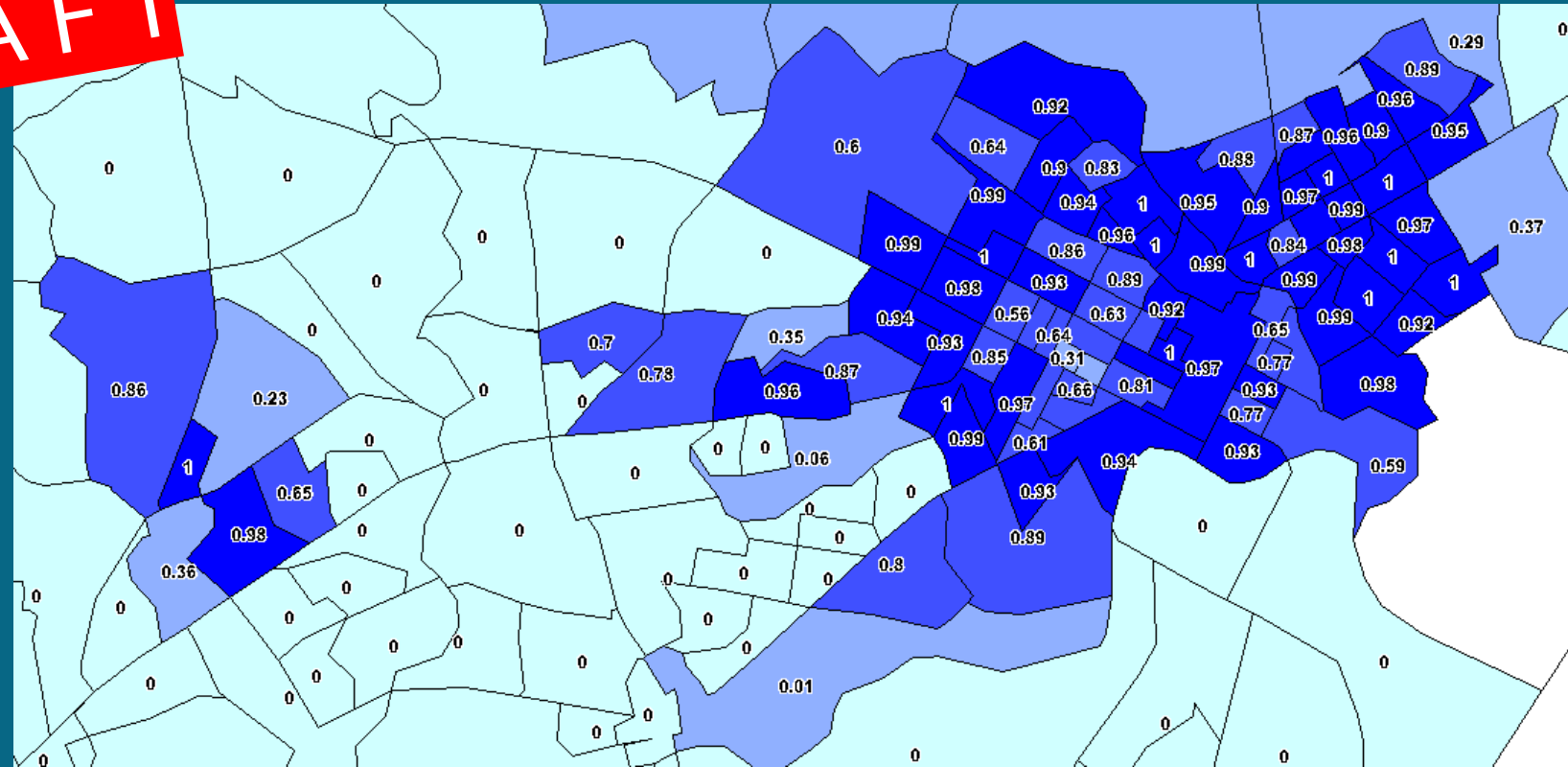
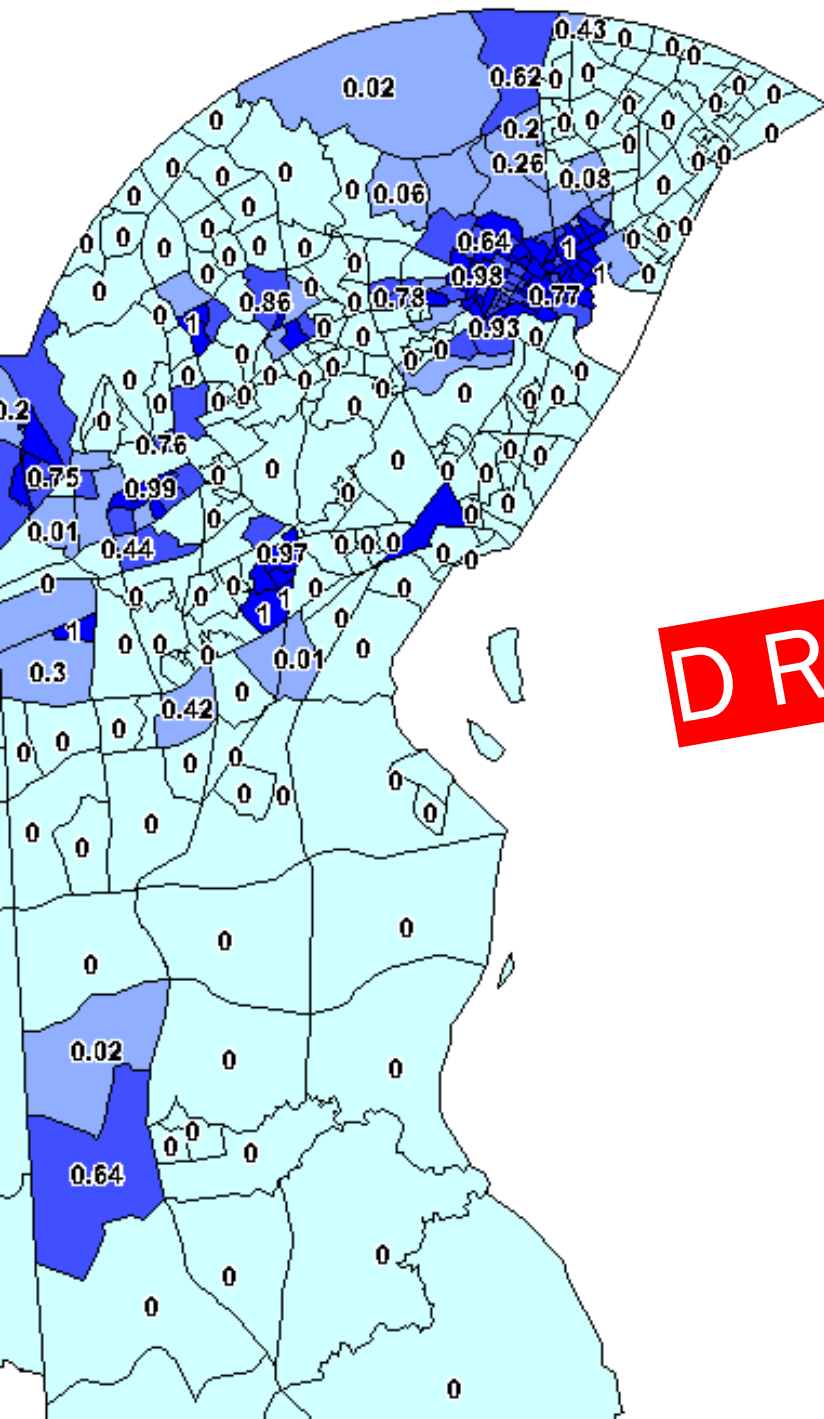
45-minute transit
trip to supermarket



10-minute walk
access to a
low-wage center

10-minute bike access to a pharmacy

DRAFT





Planned MC Analysis

- Multi-modal connectivity analysis – low-wage employment, grocery stores, libraries, hospitals, senior centers vs. MC areas (UD analysis)
- Location efficiency (CNT)
- Health impacts (via Policy Map and SDOH)
- Crash rates
- ARCCA public transit analysis
- ARCCA pedestrian analysis





Public Participation



LEP Clusters Definitions

- Use latest available data: 2012-2016 American Community Survey
- Census block group level analysis
- Tweak methodology
 - More stringent
 - Screen for dominant non-English language



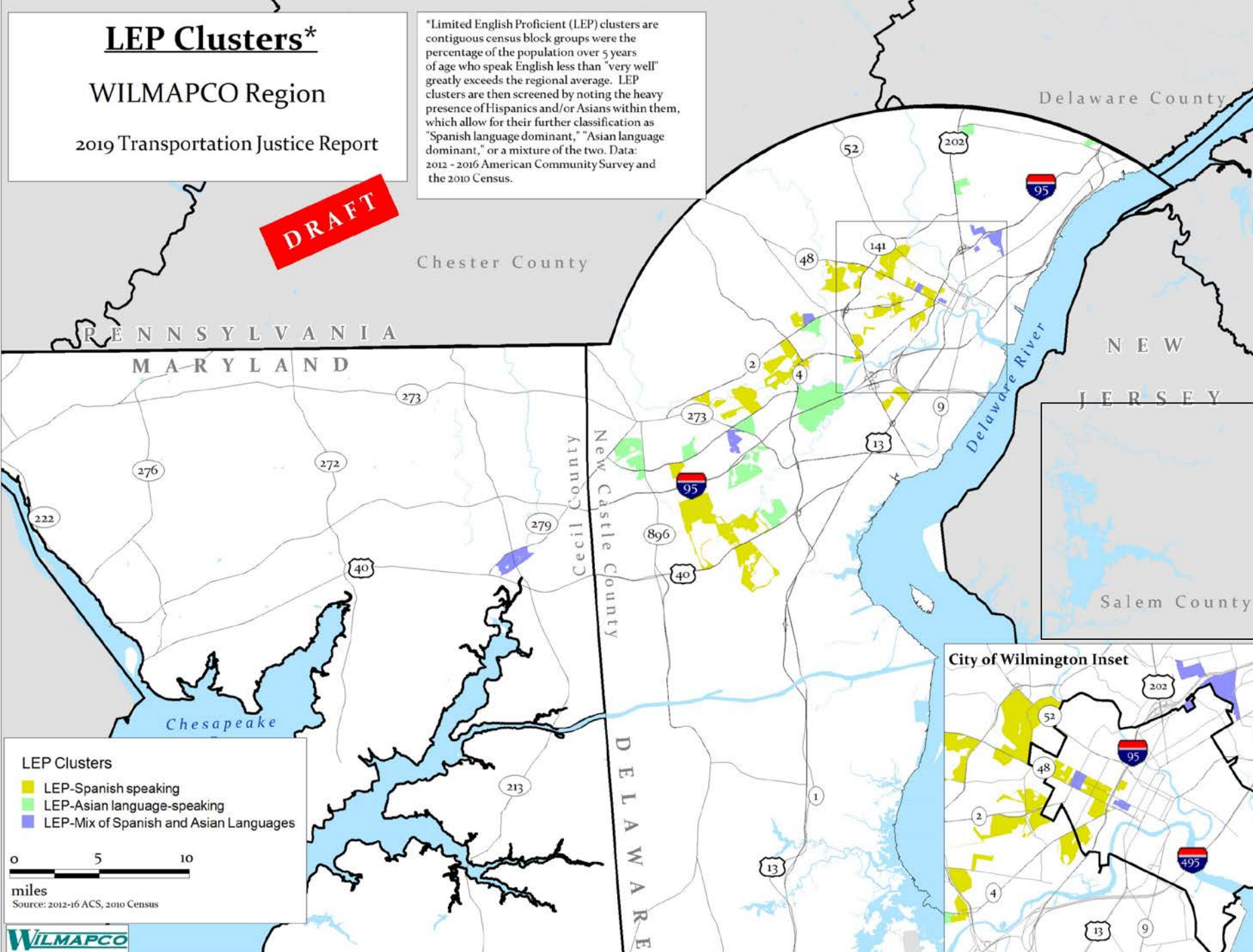
LEP Clusters*

WILMAPCO Region

2019 Transportation Justice Report

DRAFT

*Limited English Proficient (LEP) clusters are contiguous census block groups where the percentage of the population over 5 years of age who speak English less than "very well" greatly exceeds the regional average. LEP clusters are then screened by noting the heavy presence of Hispanics and/or Asians within them, which allow for their further classification as "Spanish language dominant," "Asian language dominant," or a mixture of the two. Data: 2012 - 2016 American Community Survey and the 2010 Census.



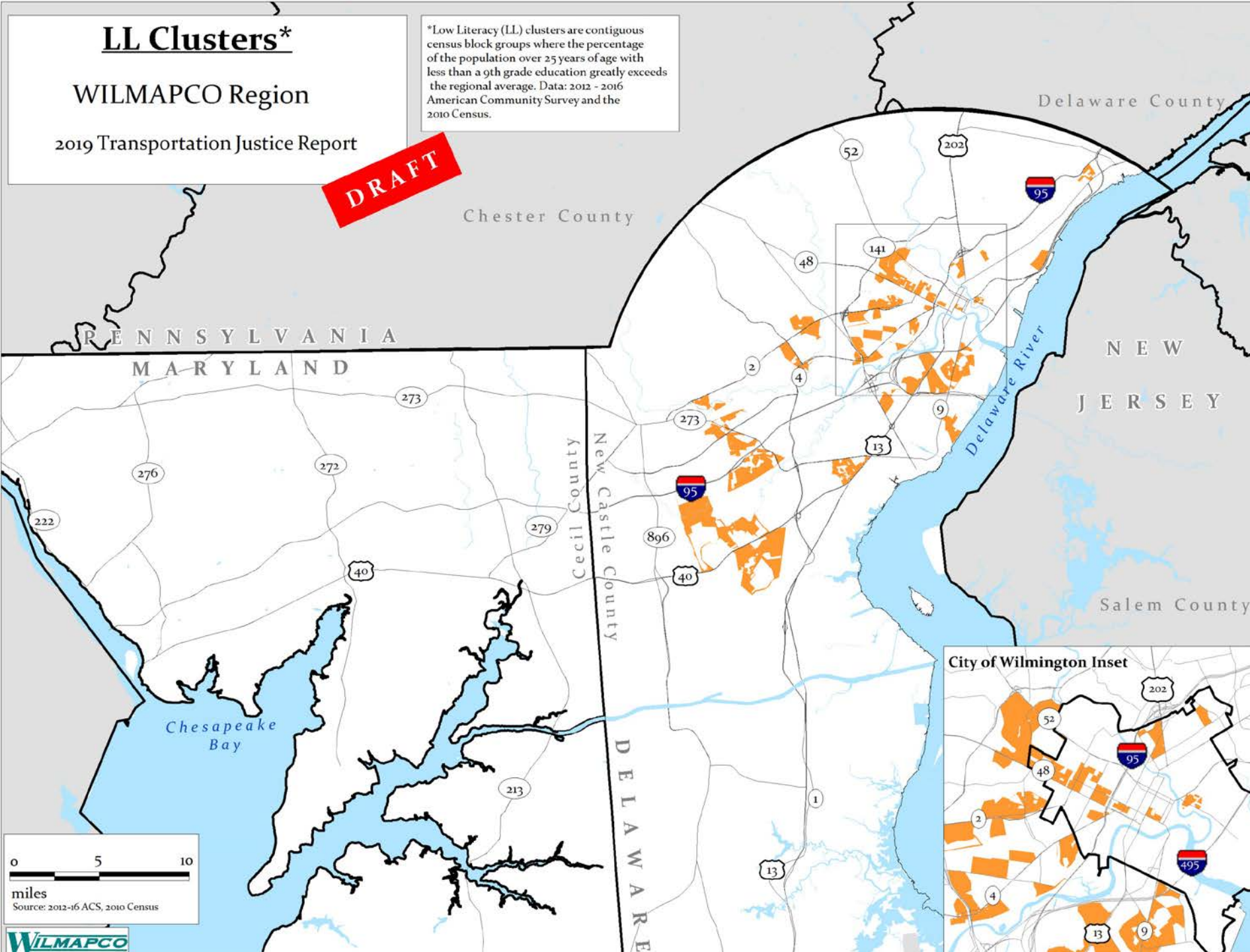
LL Clusters*

WILMAPCO Region

2019 Transportation Justice Report

*Low Literacy (LL) clusters are contiguous census block groups where the percentage of the population over 25 years of age with less than a 9th grade education greatly exceeds the regional average. Data: 2012 - 2016 American Community Survey and the 2010 Census.

DRAFT





Timeline

- Analysis to proceed through Spring 2019 with draft by Summer 2019
- Will follow on the heels of the 2050 RTP
- Projected Council endorsement in November 2019





EXTRA SLIDES



What is Title VI?

■ Civil Rights Act

- Discriminatory Statute (*race, color, national origin*)
- Regulatory requirements
- Enforceable in court

■ Differing FTA/FHWA Interpretations

- *Race, color, national origin, sex, age, disability, low-income, and limited English proficiency*

■ General MPO Requirements

- Title VI Policies/Program
- Demographic and mobility analyses





What is Environmental Justice?

■ Executive and DOT Orders

- Disparate impacts to **low income** and **minority persons**
- Not enforceable in court

■ Requirement 1: Fair Treatment

- No group should bear a disproportionate share of transportation's **benefits** or **burdens**

■ Requirement 2: Meaningful Involvement

- Facilitate involvement of those affected by proposed actions/policies





What is Transportation Justice?

- WILMAPCO–extension of EJ
 - Mobility needs of **seniors, people with disabilities** and **households without vehicles**
- Our analysis: connectivity and accessibility analyses; public engagement needs
- Re-classify as “Mobility Challenged”





New EJ Area Definitions

MODERATE – 3 paths

1. Poverty greater than the regional average, and
 - NH Blacks 3x the regional average, or
 - Hispanics 3x the regional average, or
 - NH Asians 3x the regional average
2. Racial/ethnic minorities 2x the regional average
3. Poverty 2x the regional average

SIGNIFICANT - 3 paths

1. Poverty 2x greater than the regional average, and
 - NH Blacks 3x the regional average, or
 - Hispanics 3x the regional average, or
 - NH Asians 3x the regional average
2. Racial/ethnic minorities 90% or more the block group's population
3. Poverty 3x the regional average



LL Area Definitions

LL CLUSTER

1. Percentage of the population over 25 with less than a 9th grade education exceeds 3x the regional average
 - PLUS - adjoining block groups with a percentage of the population over 25 with less than a 9th grade education exceeding 2x the regional average



New LEP Area Definitions

LEP CLUSTER

1. Percentage of the population over 5 who speak English less than “Very Well” exceeds 3x the regional average
 - PLUS - adjoining block groups with a percentage of the population over 5 who speak English less than “Very Well” exceeding 2x the regional average

LANGUAGE SCREEN

- Spanish (high % of Hispanics)
- Asian (high % of Asian)
- Spanish/Asian mixture (high % of both Hispanic and Asian)



New MC Area Definitions

MODERATE – 4 paths

1. Households without vehicles greater than 2x the regional average, and
 - Disabled greater than the regional average, or
 - Seniors greater the regional average, or
2. Households without vehicles greater than 3x the regional average
3. Disabled greater than 3x the regional average
4. Seniors greater than 3x the regional average

SIGNIFICANT

1. Households without vehicles greater than 3x the regional average, and
 - Disabled greater than the regional average, or
 - Seniors greater than the regional average, or

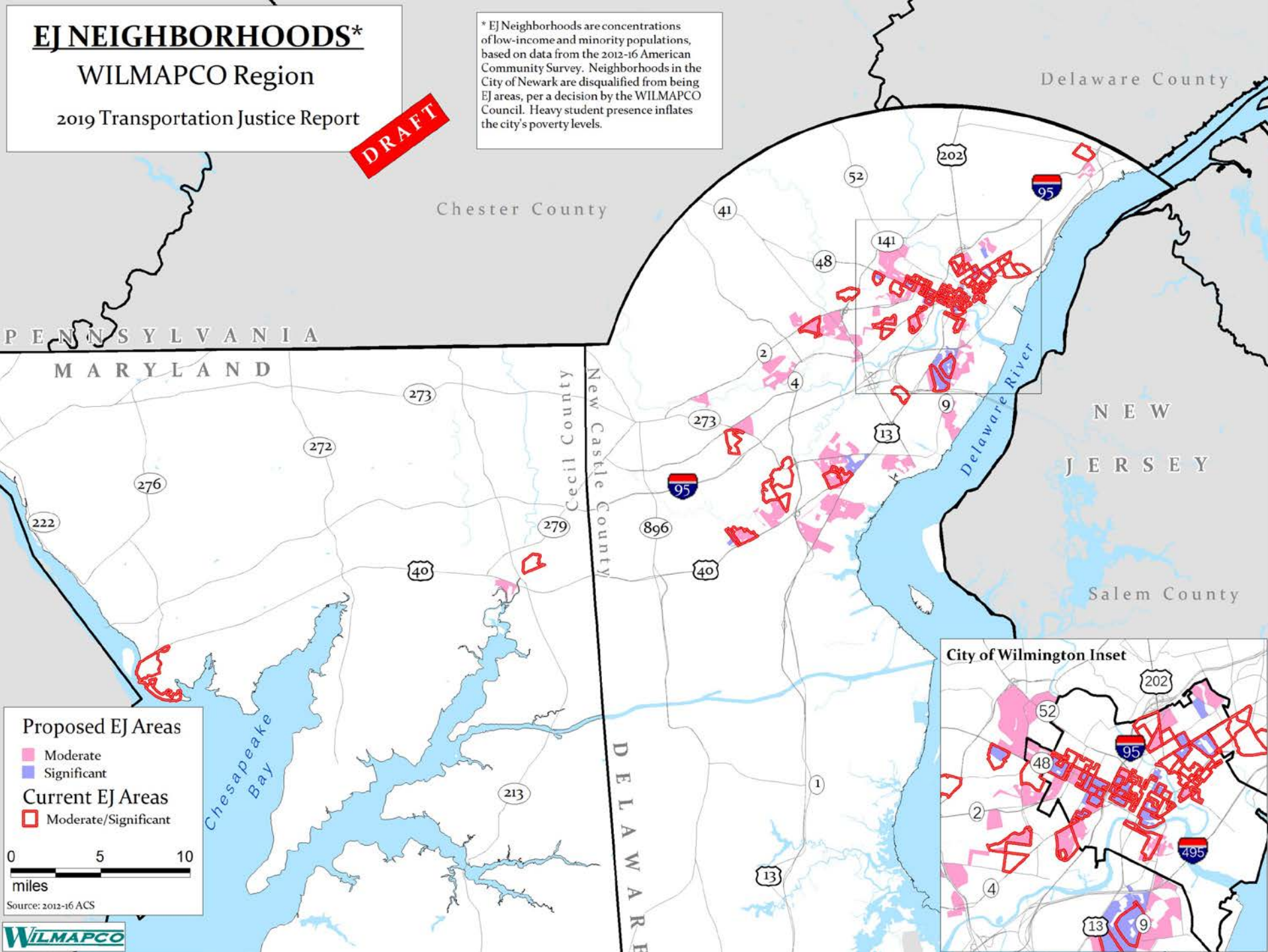
EJ NEIGHBORHOODS*

WILMAPCO Region

2019 Transportation Justice Report

DRAFT

* EJ Neighborhoods are concentrations of low-income and minority populations, based on data from the 2012-16 American Community Survey. Neighborhoods in the City of Newark are disqualified from being EJ areas, per a decision by the WILMAPCO Council. Heavy student presence inflates the city's poverty levels.



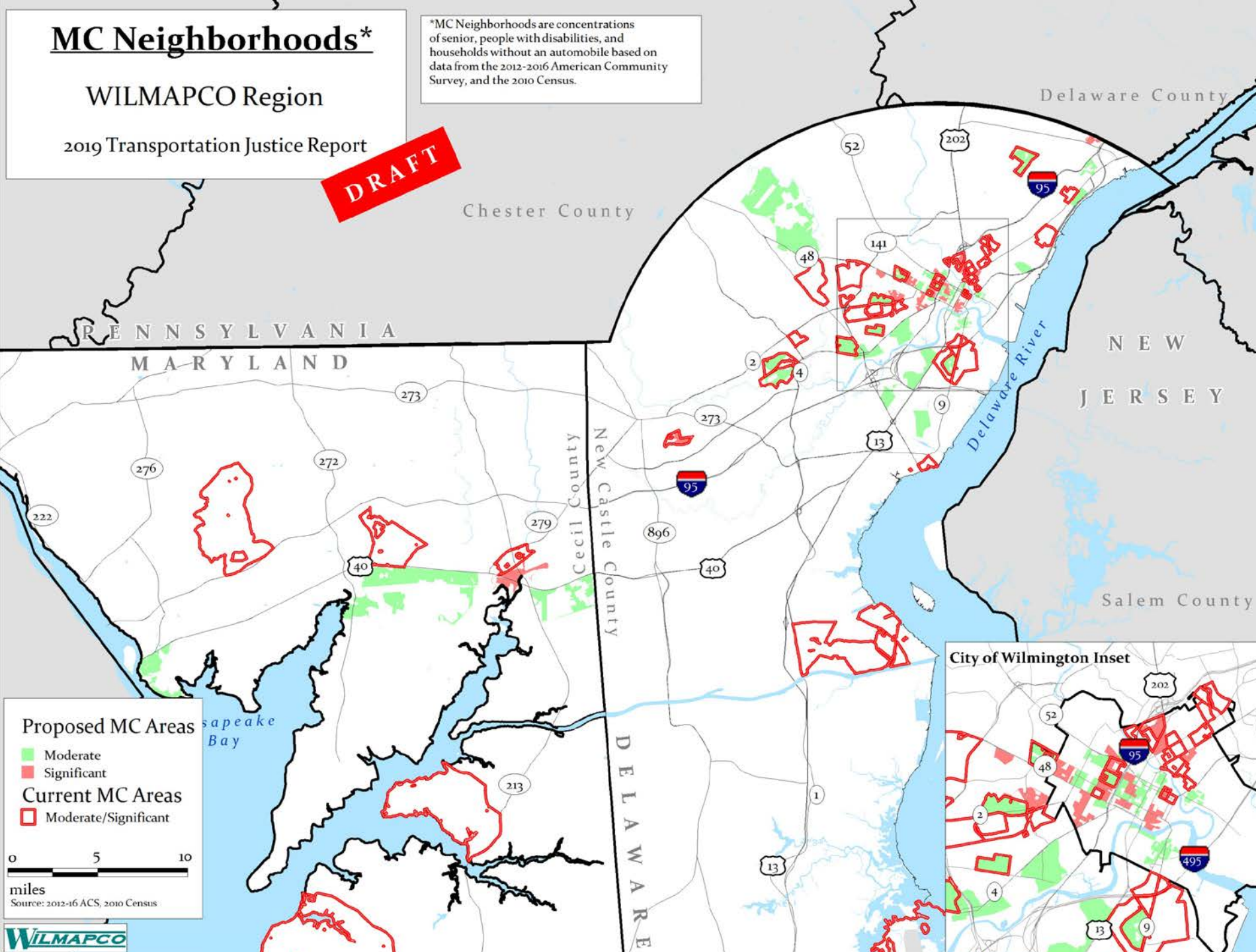
MC Neighborhoods*

WILMAPCO Region

2019 Transportation Justice Report

*MC Neighborhoods are concentrations of senior, people with disabilities, and households without an automobile based on data from the 2012-2016 American Community Survey, and the 2010 Census.

DRAFT



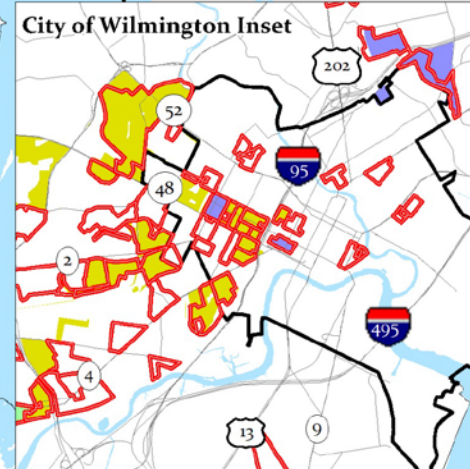
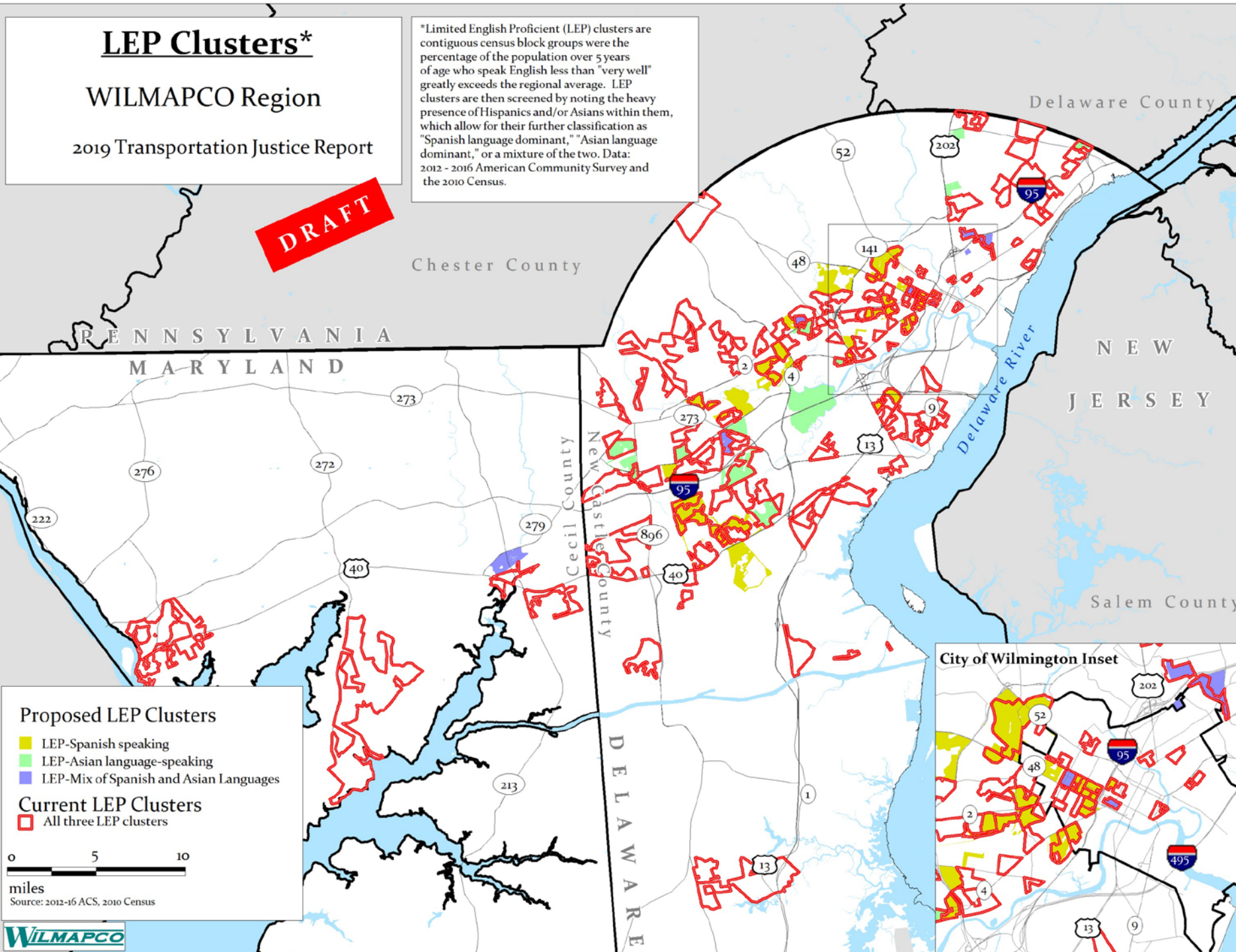
LEP Clusters*

WILMAPCO Region

2019 Transportation Justice Report

DRAFT

*Limited English Proficient (LEP) clusters are contiguous census block groups where the percentage of the population over 5 years of age who speak English less than "very well" greatly exceeds the regional average. LEP clusters are then screened by noting the heavy presence of Hispanics and/or Asians within them, which allow for their further classification as "Spanish language dominant," "Asian language dominant," or a mixture of the two. Data: 2012 - 2016 American Community Survey and the 2010 Census.



Proposed LEP Clusters

- LEP-Spanish speaking
- LEP-Asian language-speaking
- LEP-Mix of Spanish and Asian Languages

Current LEP Clusters

- All three LEP clusters

0 5 10 miles

Source: 2012-16 ACS, 2010 Census