



8TH ST. ( ← ONE WAY )

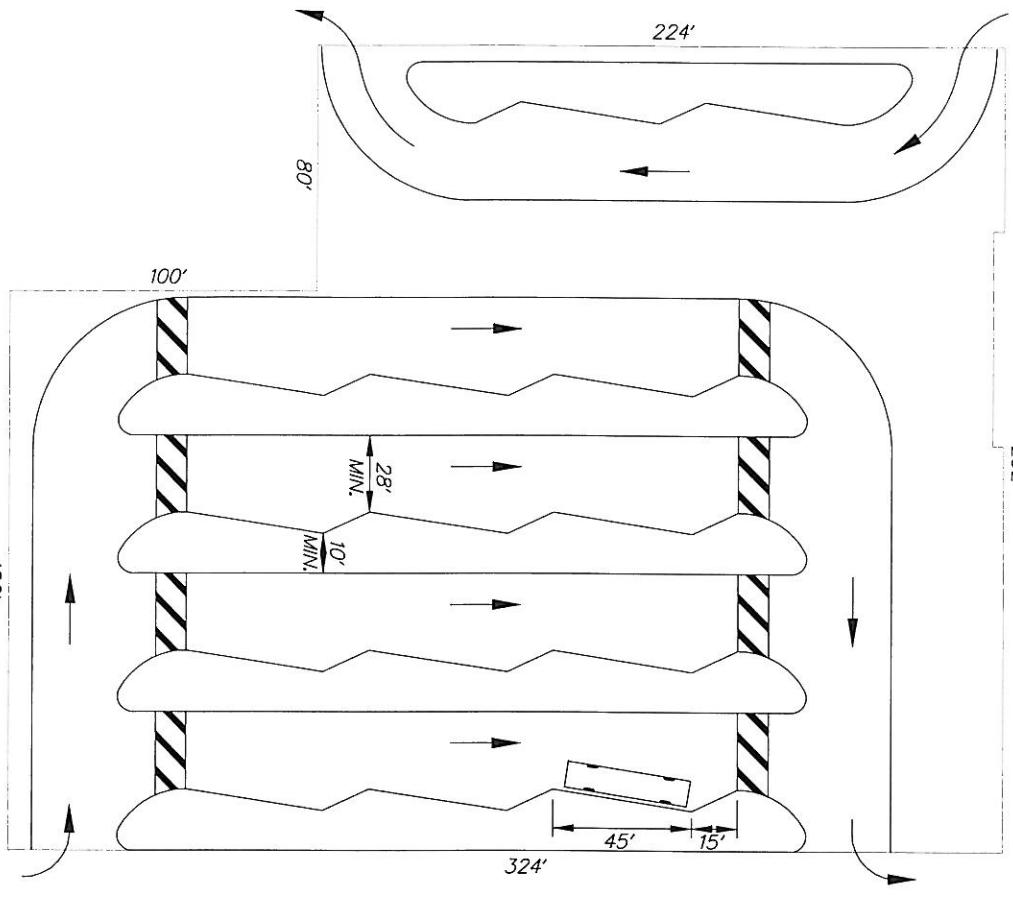
TATNALL ST. ( ← ONE WAY )

8TH AND ORANGE (1.76 AC.)  
CAPACITY: 14 BUSES

12

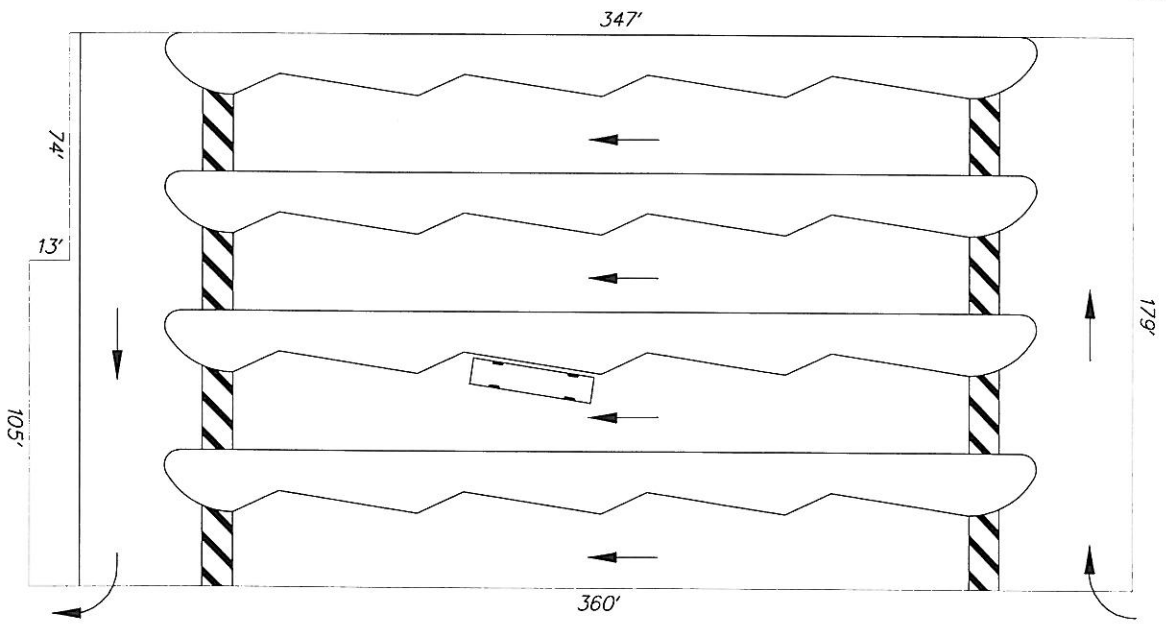
GIRARD ST.

9TH ST. (ONE WAY →)



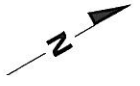
ORANGE ST. (ONE WAY →)

9TH AND SHIPLEY (1.46 AC.)  
CAPACITY: 16 BUSES



SHIPLEY ST. ( ← ONE WAY )

**ALTERNATIVE 1**  
SAWTOOTH  
(ASSIGNED POSITIONS)



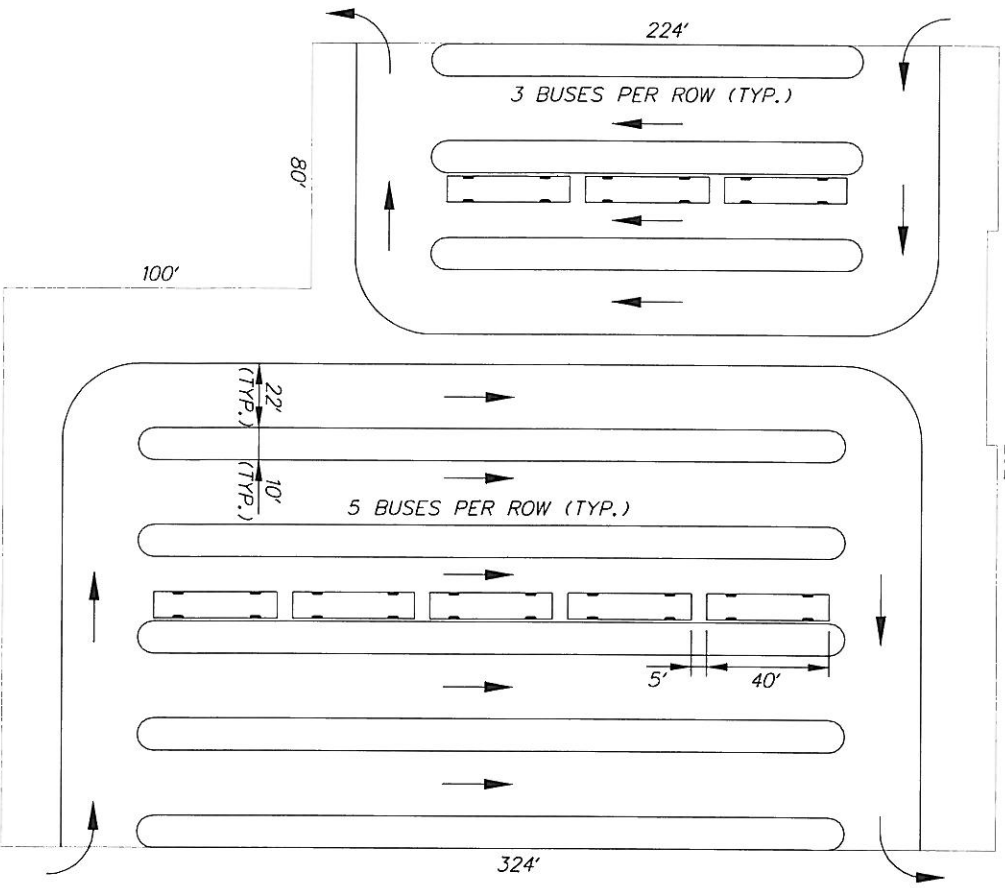
8TH ST. ( ← ONE WAY )

TATNALL ST. ( ← ONE WAY )

8TH AND ORANGE (1.76 AC.)  
CAPACITY: 34 BUSES

GIRARD ST.

9TH ST. (ONE WAY →)



324'

ORANGE ST. (ONE WAY →)

182'

22' (TYP.)  
10' (TYP.)

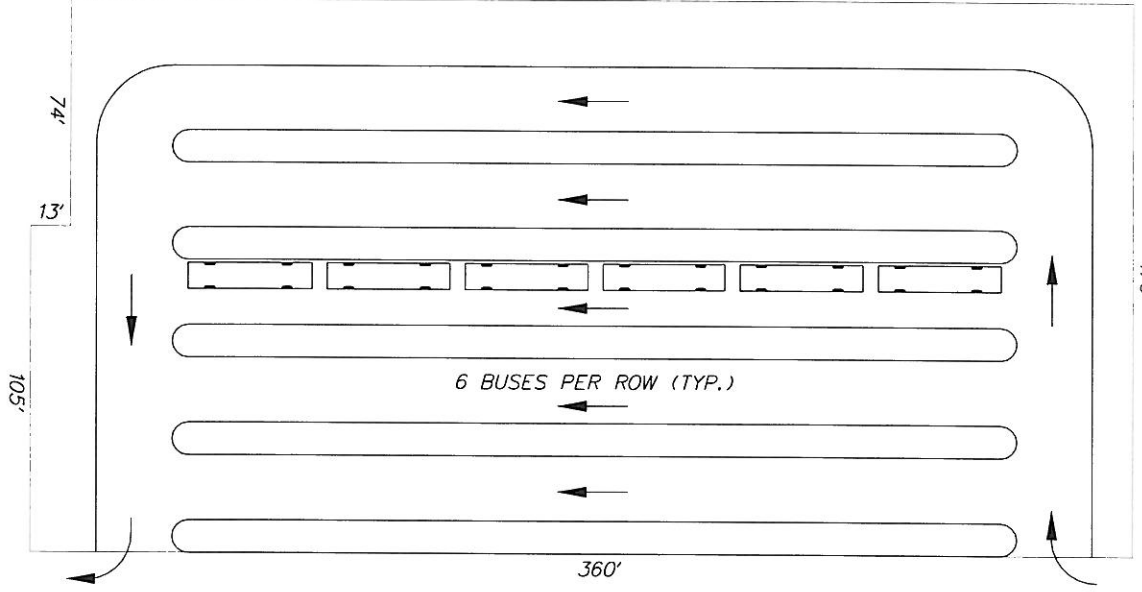
5 BUSES PER ROW (TYP.)

5' 40'

262'

347'

9TH AND SHIPLEY (1.46 AC.)  
CAPACITY: 30 BUSES



6 BUSES PER ROW (TYP.)

74'  
13'  
105'

360'

SHIPLEY ST. ( ← ONE WAY )

179'

**ALTERNATIVE 2**  
IN-LINE, ONE-WAY  
(RANDOM POSITIONS)



TATNALL ST. ( ← ONE WAY )

8TH ST. ( ← ONE WAY )

8TH AND ORANGE (1.76 AC.)  
CAPACITY: 34 BUSES

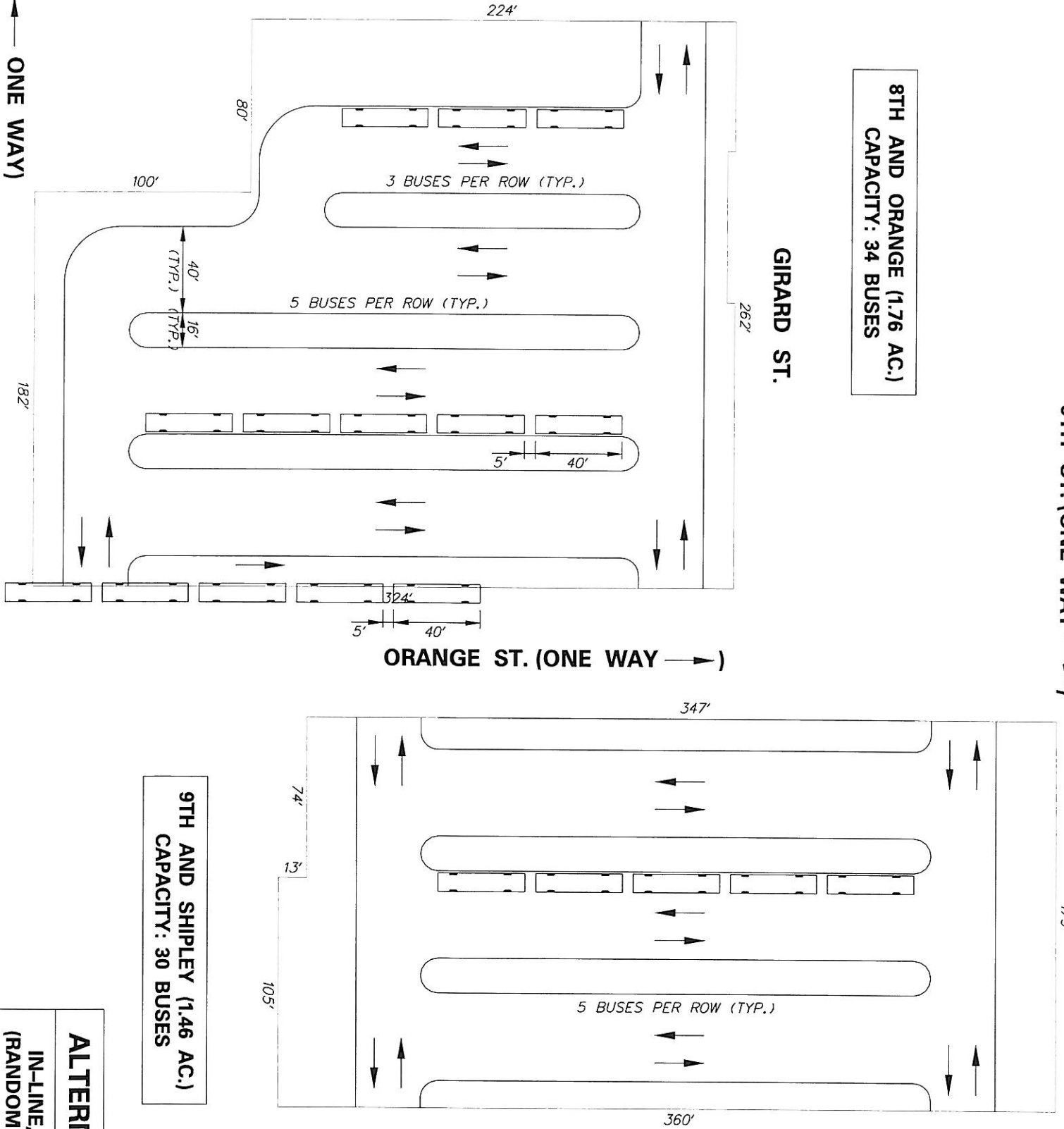
GIRARD ST.

9TH ST. (ONE WAY →)

ORANGE ST. (ONE WAY →)

9TH AND SHIPLEY (1.46 AC.)  
CAPACITY: 30 BUSES

SHIPLEY ST. ( ← ONE WAY )



**ALTERNATIVE 3**

IN-LINE, TWO-WAY  
(RANDOM POSITIONS)



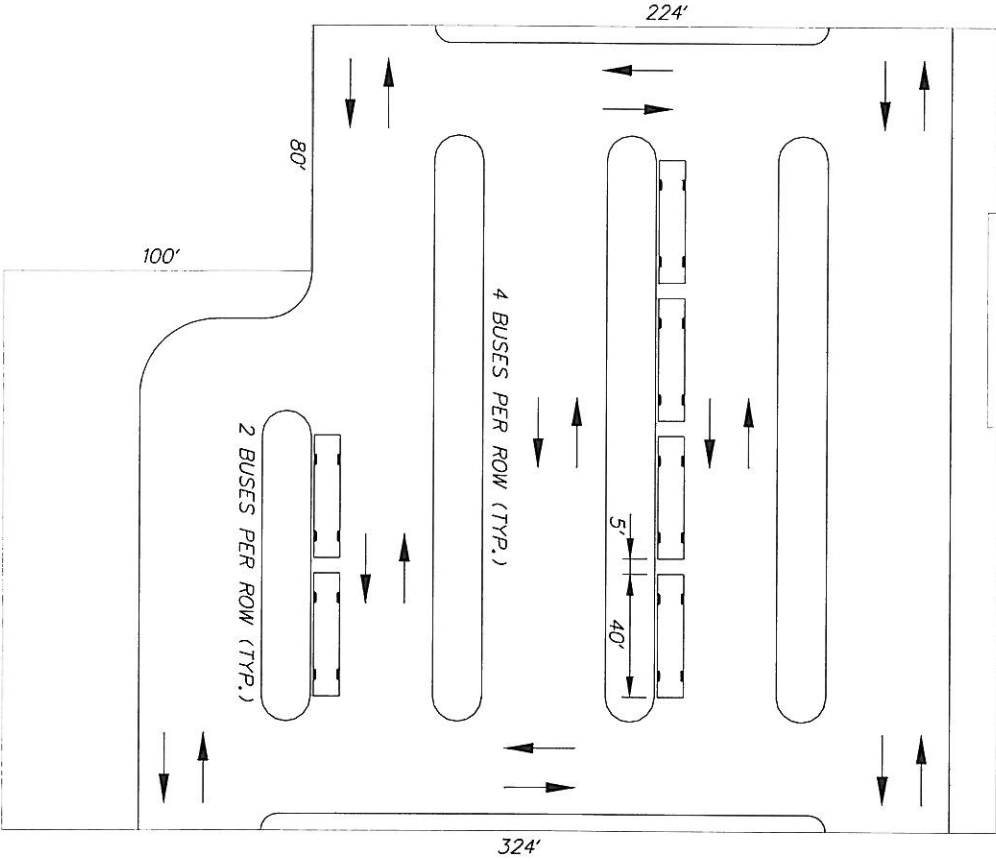
9TH ST. (ONE WAY →)

8TH AND ORANGE (1.76 AC.)  
CAPACITY: 34 BUSES

GIRARD ST.

TATNALL ST. (← ONE WAY)

8TH ST. (← ONE WAY)



ORANGE ST. (ONE WAY →)

9TH AND SHIPLEY (1.46 AC.)  
CAPACITY: 24 BUSES

SHIPLEY ST. (← ONE WAY)

**ALTERNATIVE 4**  
IN-LINE, TWO-WAY  
(RANDOM POSITIONS)

