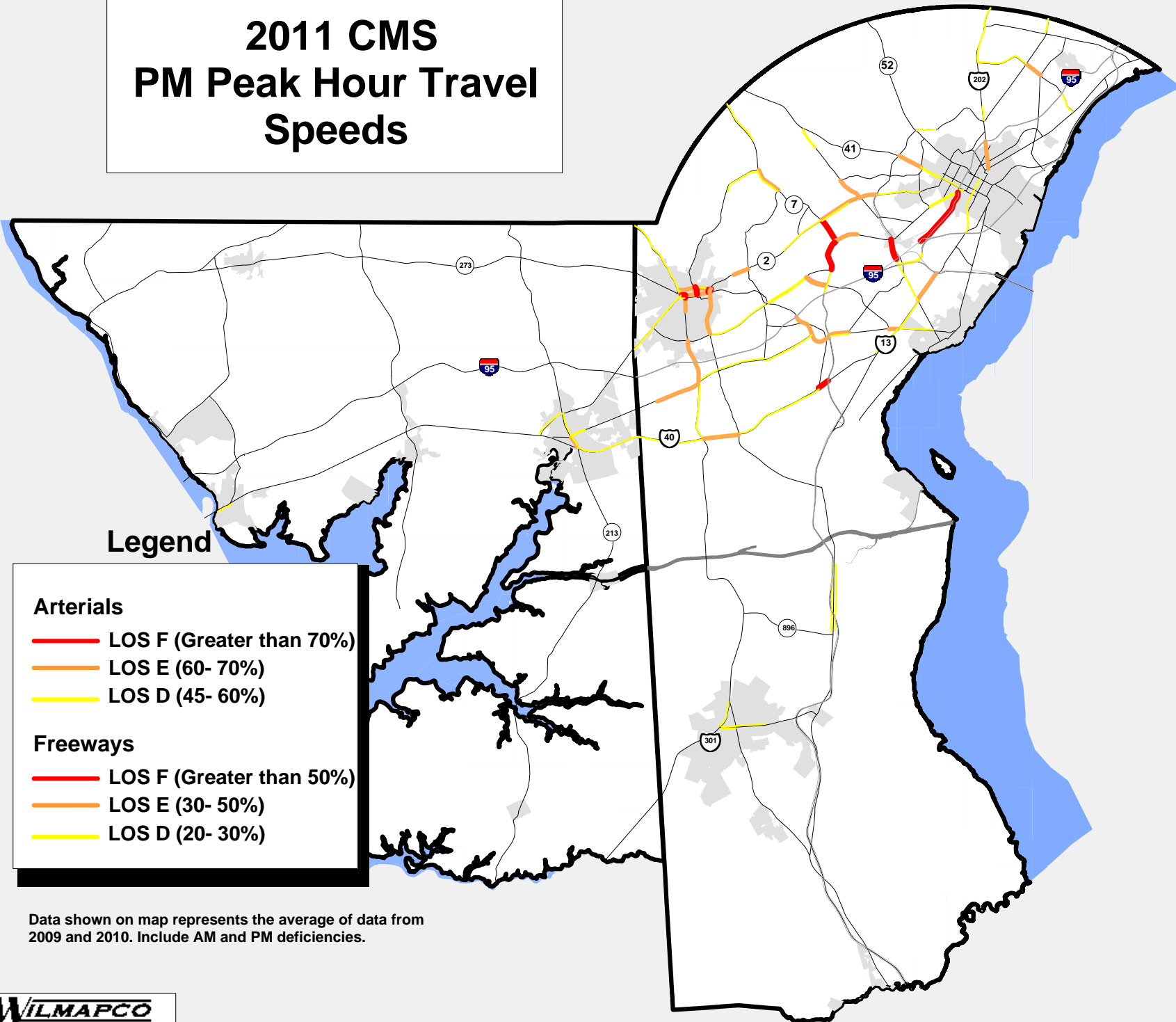


2011 CMS PM Peak Hour Travel Speeds



Legend

- Arterials**
 - Red line: LOS F (Greater than 70%)
 - Orange line: LOS E (60- 70%)
 - Yellow line: LOS D (45- 60%)
- Freeways**
 - Red line: LOS F (Greater than 50%)
 - Orange line: LOS E (30- 50%)
 - Yellow line: LOS D (20- 30%)

Data shown on map represents the average of data from 2009 and 2010. Include AM and PM deficiencies.