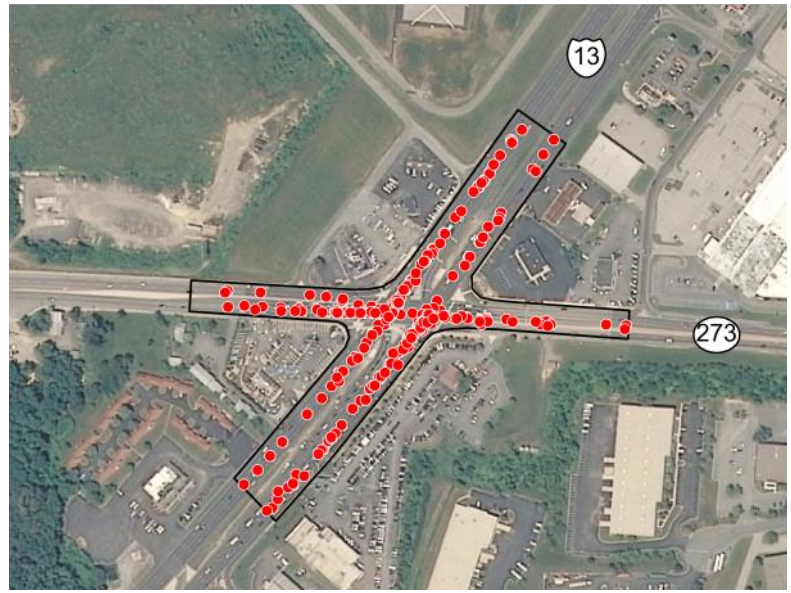


Crash Analysis Methodology:

The methodology for this analysis was taken from the results and recommendations found in the master's thesis titled "*Development and Analysis of an Intersection Safety Prioritization Method for the State of Delaware*" by Anna Duryea produced in the summer of 2015¹. The results found in the analysis are based on using an intersection's "sphere of influence" which varies at each location based on factors such as intersection width and acceleration lanes. According to the conclusions from the thesis, the intersection buffers created by WILMAPCO and DeIDOT Planning provide a more accurate definition of an intersection than procedures that simply include all crashes within a specific distance from the intersection.

Sample Intersection Buffers



The analysis combines the use of three crash criteria: frequency, severity, and manner of impact at each intersection. Analysis includes a 3-year average of crashes (2019-2021) at signalized and non-signalized intersections that average 10 or more crashes per year throughout the State. It also compares intersections to each other by grouping them by the functional classification of the intersection roadways.

1. Crash Frequency: Total reported crashes within intersection "sphere of influence" between 2019 and 2021
2. Crash Severity Index: The severity weights for each crash by type (Property Damage Only, Injury or Fatal) Intersections then ranked by the total scoring.

$$\text{Crash Severity Index} = (\text{Number of Fatal Crashes} * 40) + (\text{Number of Injury Crashes} * 4.5) + (\text{Number of Property Damage Only Crashes} * 1)$$
3. Crashes by Manner of Impact: Total crash cost applied to each accident for each intersection based on the following values per impact types:

- Not a collision between two vehicles \$59,248	- Sideswipe, same direction \$8,817
- Front to rear \$12,163	- Sideswipe, opposite direction \$17,141
- Front to Front \$81,100	- Rear to side & Rear to Rear \$3,151
- Angle \$34,477	- Other & Unknown \$38,868

¹Duryea, Anna (2015). *Development and Analysis of an Intersection Safety Prioritization Method for the State of Delaware* (Master's Thesis). University of Delaware.

Statewide Intersection Crash Rankings (New Castle County Locations) 2019-21

ID	Intersection Location	Intersection Road Classifications	Total Crashes 2019-21	Avg. Annual 2019 -21	Frequency Rank 2019-21	Severity Rank 2019-21	Total Cost of Crashes by Manner of Impact	Manner of Impact Rank	Final Statewide Ranking (Out of 288)
N183	US 13 @ DE 273	Principal Arterial vs. Principal Arterial	186	62	1	2	\$ 3,727,963.00	2	2
N217	US 13 @ BOULDEN BLVD	Principal Arterial vs. Local/Collector	173	57.7	4	4	\$ 3,511,920.00	4	3
N165	DE 2 @ DE 7	Principal Arterial vs. Principal Arterial	175	58.3	3	7	\$ 3,685,901.00	3	4
N153	DE 4 @ DE 2	Principal Arterial vs. Principal Arterial	156	52	6	3	\$ 3,234,312.00	5	5
N423T	DE 273 @ LIBRARY AVE	Principal Arterial vs. Principal Arterial	146	48.7	7	5	\$ 2,877,645.00	11	7
N185	US 40 @ DE 7	Principal Arterial vs. Minor Arterial	143	47.7	8	19	\$ 2,910,145.00	10	10
N317	DE 2 @ RED MILL RD	Principal Arterial vs. Minor Arterial	129	43	12	23	\$ 2,944,283.00	7	11
N483	US 40 @ DE 896	Principal Arterial vs. Principal Arterial	122	40.7	14	12	\$ 2,358,959.00	20	13
N346	DE 4 @ DE 72	Principal Arterial vs. Minor Arterial	130	43.3	11	17	\$ 2,297,013.00	23	14
N436T	DE 4 @ DE 896	Principal Arterial vs. Principal Arterial	122	40.7	15	13	\$ 2,268,434.00	26	15
N192	DEL. RT. 7 & DEL. RT. 273	Principal Arterial vs. Principal Arterial	121	40.3	16	30	\$ 2,873,766.00	12	16
N351	DEL. RT. 273 & OLD BALT. PIKE	Principal Arterial vs. Minor Arterial	109	36.3	20	22	\$ 2,306,162.00	22	17
N242	DEL. RT. 4 & SALEM CHURCH RD	Principal Arterial vs. Minor Arterial	117	39	17	32	\$ 2,239,151.00	27	22
N595	DE 7 @ AAA BLVD	Principal Arterial vs. Local/Collector	98	32.7	28	29	\$ 2,222,791.00	28	24
N239	US 40 @ DE 72	Principal Arterial vs. Minor Arterial	89	29.7	40	43	\$ 2,377,171.00	19	27
N173	US 9 @ MEMORIAL DR. / WEST AVE	Minor Arterial vs. Minor Arterial	77	25.7	63	25	\$ 2,455,979.00	17	29
N339	DEL. RT. 273 & AIRPORT RD	Principal Arterial vs. Minor Arterial	82	27.3	48	21	\$ 2,058,100.00	37	30
N538	DE 1 NB RMP @ RD A	Principal Arterial vs. Local/Collector	79	26.3	58	42	\$ 2,663,539.00	14	32
N381	OLD BALT. PIKE & SALEM CHURCH RD (SALEM WOODS)	Minor Arterial vs. Minor Arterial	81	27	51	38	\$ 2,201,660.00	29	33
N393	US 40 @ PORTER RD	Principal Arterial vs. Local/Collector	92	30.7	37	48	\$ 2,118,411.00	35	34
N191	SR 7 @ NEW CHURCHMANS RD	Principal Arterial vs. Minor Arterial	96	32	31	46	\$ 1,747,867.00	53	38
N181	DE 2 @ OTTS CHAPEL RD	Principal Arterial vs. Local/Collector	97	32.3	30	28	\$ 1,604,977.00	73	40
N179	US 13 @ MEMORIAL DR	Principal Arterial vs. Minor Arterial	81	27	53	33	\$ 1,876,985.00	45	41
N289	DE 7 @ TELEGRAPH RD	Principal Arterial vs. Local/Collector	105	35	22	50	\$ 1,662,134.00	62	43
N188	DEL. RT. 896 & OLD BALT. PIKE	Principal Arterial vs. Minor Arterial	116	38.7	18	99	\$ 2,313,889.00	21	44
N312	DEL. RT. 4 & HARMONY RD	Principal Arterial vs. Local/Collector	92	30.7	36	54	\$ 1,828,433.00	48	45
N337	DE 273 @ HARMONY RD	Principal Arterial vs. Local/Collector	84	28	45	34	\$ 1,637,747.00	66	46
N109	US 202 @ MURPHY RD	Principal Arterial vs. Principal Arterial	87	29	43	26	\$ 1,526,643.00	81	48
N182	OLD BALT. PIKE & S. CHAPEL ST. EXT.(DEL. RT. 72)	Minor Arterial vs. Minor Arterial	93	31	34	59	\$ 1,662,447.00	61	49
N435T	DE 896 @ OLD CHESTNUT	Principal Arterial vs. Local/Collector	70	23.3	74	35	\$ 1,769,322.00	50	51
N460	DEL. RT. 273 & APPLEBY RD	Principal Arterial vs. Local/Collector	77	25.7	62	57	\$ 1,903,067.00	43	53
N511T	SR 2 & Hawthorne Avenue	Principal Arterial vs. Local/Collector	99	33	27	55	\$ 1,407,422.00	97	54
N238	OLD BALT. PIKE & OTTS CHAPEL/ PLEASANT VALLEY RD	Minor and Local/Collectors	70	23.3	76	67	\$ 2,015,569.00	39	56
N552	US 40 @ CHURCH RD	Principal Arterial vs. Local/Collector	81	27	54	44	\$ 1,522,302.00	84	57
N101	US 202 @ DE 92	Principal Arterial vs. Principal Arterial	91	30.3	38	95	\$ 1,764,854.00	51	58
N225	DE 7 @ DE 4 STANTON	Principal Arterial vs. Principal Arterial	81	27	50	85	\$ 1,802,477.00	49	59
N252	DE 2 @ DUNCAN RD	Principal Arterial vs. Local/Collector	76	25.3	65	40	\$ 1,479,190.00	88	63
N366	DE 7 @ DE 4 MORGAN	Principal Arterial vs. Principal Arterial	80	26.7	55	64	\$ 1,578,365.00	76	64
N303	DEL. RT. 141 & COMMONS BLVD.	Principal Arterial vs. Local/Collector	78	26	59	92	\$ 1,843,274.00	47	65

Statewide Intersection Crash Rankings (New Castle County Locations) 2019-21

ID	Intersection Location	Intersection Road Classifications	Total Crashes 2019-21	Avg. Annual 2019 -21	Frequency Rank 2019-21	Severity Rank 2019-21	Total Cost of Crashes by Manner of Impact	Manner of Impact Rank	Final Statewide Ranking (Out of 288)
N422T	DE 2 @ E CLEVELAND AVE	Principal Arterial vs. Minor Arterial	69	23	77	65	\$ 1,712,403.00	56	66
N301	DE 2 @ HARMONY RD	Principal Arterial vs. Local/Collector	81	27	52	79	\$ 1,611,907.00	69	67
N715	US 301 @ MERRIMAC AVE	Principal Arterial vs. Local/Collector	78	26	60	56	\$ 1,440,121.00	91	68
N434T	DE 896 @ WELSH TRACT RD	Principal Arterial vs. Local/Collector	65	21.7	83	66	\$ 1,606,971.00	72	70
N272	DEL. RT. 2 & DUPONT RD / RT100	Principal Arterial vs. Minor Arterial	55	18.3	114	70	\$ 1,956,337.00	40	72
N521	DEL. RT. 273 & DEL. RT. 1 N.B. OFF RAMP	Principal Arterial vs. Principal Arterial	69	23	78	51	\$ 1,393,491.00	102	73
N120	BUS 13 @ HARVEY RD	Principal Arterial vs. Local/Collector	61	20.3	89	103	\$ 1,906,084.00	42	74
N162	DE 2 @ DE 41	Principal Arterial vs. Principal Arterial	66	22	81	68	\$ 1,509,106.00	85	75
N008P	US 13 @ SCHOOL LN	Principal Arterial vs. Local/Collector	70	23.3	75	96	\$ 1,600,978.00	74	79
N425T	LIBRARY AVE @ WYOMING RD	Minor and Local/Collectors	53	17.7	121	31	\$ 1,431,946.00	94	80
N285	DE 2 @ FARRAND DR	Principal Arterial vs. Local/Collector	72	24	71	120	\$ 1,648,422.00	64	82
N147	FOULK RD @ SILVERSIDE RD	Minor Arterial vs. Minor Arterial	55	18.3	111	107	\$ 1,901,056.00	44	84
N156	DE 141 @ DE 48	Principal Arterial vs. Principal Arterial	75	25	66	111	\$ 1,420,104.00	95	87
N233	DE 7 @ MILLTOWN RD	Principal Arterial vs. Minor Arterial	61	20.3	90	97	\$ 1,483,187.00	87	88
N187	US 40 @ Glasgow Avenue	Principal Arterial vs. Local/Collector	80	26.7	56	205	\$ 2,428,626.00	18	89
N326	DE 92 @ PEACHTREE DR	Principal Arterial vs. Local/Collector	61	20.3	88	143	\$ 1,609,818.00	70	92
N150	DE 141 @ DE 100	Principal Arterial vs. Minor Arterial	66	22	80	140	\$ 1,524,407.00	82	93
N424T	DELAWARE @ LIBRARY AVE	Principal Arterial vs. Minor Arterial	61	20.3	92	89	\$ 1,242,379.00	123	94
N170	DEL. RT. 141 & FRENCHTOWN RD(RT 273)	Principal Arterial vs. Principal Arterial	53	17.7	123	104	\$ 1,543,411.00	79	95
N035P	US 40 @ GOVERNORS SQ	Principal Arterial vs. Local/Collector	67	22.3	79	86	\$ 1,160,428.00	142	96
N627T	FRONT ST. & WALNUT ST. (WILMINGTON)	Principal Arterial vs. Principal Arterial	45	15	155	76	\$ 1,545,430.00	78	97
N409	US 13 @ RD 381	Principal Arterial vs. Local/Collector	61	20.3	93	131	\$ 1,494,739.00	86	98
N219	US 13 @ HARRISON AVE	Principal Arterial vs. Local/Collector	60	20	96	112	\$ 1,277,414.00	114	101
N432T	E CLEVELAND AVE @ N CHAPEL ST	Minor Arterial vs. Minor Arterial	57	19	106	93	\$ 1,228,047.00	126	102
N243	DEL. RT. 71 & RD 25 (GINN'S CORNER)	Minor and Local/Collectors	53	17.7	119	139	\$ 1,607,769.00	71	104
N184	US 13 @ US 40	Principal Arterial vs. Principal Arterial	60	20	95	94	\$ 1,165,308.00	140	105
N465	DEL. RT. 4 & ROLLING RD / SAMOSET DR	Principal Arterial vs. Local/Collector	61	20.3	94	154	\$ 1,404,493.00	99	110
N220	US 13 @ LINCOLN AVE	Principal Arterial vs. Local/Collector	52	17.3	129	106	\$ 1,293,032.00	113	112
N367	DEL. RT. 273 & CHAPMAN RD / EAGLE RUN	Principal Arterial vs. Minor Arterial	65	21.7	82	148	\$ 1,252,594.00	119	113
N271	4 TH ST @ JACKSON ST	Principal Arterial vs. Minor Arterial	44	14.7	159	123	\$ 1,613,514.00	68	115
N163	DE 141 @ DE 34	Principal Arterial vs. Minor Arterial	57	19	107	144	\$ 1,385,787.00	103	116
N369	DEL. RT. 4 & NEW CHURCHMANS RD (DEL PARK ENT.)	Principal Arterial vs. Minor Arterial	54	18	115	136	\$ 1,315,726.00	109	117
N282	CENTERVILLE RD & OLD CAPITOL TRAIL	Minor and Local/Collectors	45	15	148	146	\$ 1,634,165.00	67	118
N625	US 13 @ HESSLER/DMV	Principal Arterial vs. Local/Collector	55	18.3	112	108	\$ 1,160,578.00	141	119
N556	US 301 @ BUNKER HILL RD	Principal Arterial vs. Minor Arterial	56	18.7	109	117	\$ 1,092,493.00	156	124
N486	US 40 @ PLEASANT VALLEY RD	Principal Arterial vs. Local/Collector	51	17	131	109	\$ 1,145,247.00	145	127
N546	RD A @ DE 1 SB RMP	Principal Arterial vs. Local/Collector	52	17.3	130	163	\$ 1,407,160.00	98	128
N266	DE 71 @ DE 72	Minor and Local/Collectors	52	17.3	128	172	\$ 1,434,910.00	92	129
N454	DE 896 @ PORTER RD	Principal Arterial vs. Local/Collector	58	19.3	103	122	\$ 1,036,053.00	172	130

Statewide Intersection Crash Rankings (New Castle County Locations) 2019-21

ID	Intersection Location	Intersection Road Classifications	Total Crashes 2019-21	Avg. Annual 2019 -21	Frequency Rank 2019- 21	Severity Rank 2019- 21	Total Cost of Crashes by Manner of Impact	Manner of Impact Rank	Final Statewide Ranking (Out of 288)
N590	DE 273 @ RED MILL CONN	Principal Arterial vs. Minor Arterial	53	17.7	126	145	\$ 1,221,296.00	129	131
N019P	DE 7 @ DE PARK ENT	Principal Arterial vs. Local/Collector	50	16.7	133	156	\$ 1,258,292.00	117	133
UN22	Dupont Parkway (US 13) & Franklin Avenue	Principal Arterial vs. Local/Collector	41	13.7	180	130	\$ 1,415,552.00	96	134
N490	US 13 @ SIENNI BLVD	Principal Arterial vs. Local/Collector	49	16.3	137	161	\$ 1,225,116.00	128	137
N347	DEL. RT. 7 & DEL. RT. 72	Principal Arterial vs. Minor Arterial	50	16.7	132	157	\$ 1,165,946.00	139	139
N330	US 13 @ BOYDS CORNER	Principal Arterial vs. Minor Arterial	53	17.7	120	181	\$ 1,204,862.00	130	140
N712	US 13 @ DE 71	Principal Arterial vs. Local/Collector	49	16.3	139	61	\$ 765,741.00	242	141
N741	US 40 @ GLASGOW DR	Principal Arterial vs. Local/Collector	45	15	156	128	\$ 1,077,543.00	159	142
N705	US 301 @ DIAMOND ST BLVD	Principal Arterial vs. Local/Collector	50	16.7	135	126	\$ 997,205.00	183	143
N332	US 40 @ GLASGOW PINES	Principal Arterial vs. Local/Collector	52	17.3	127	174	\$ 1,108,614.00	154	144
N255	DE 4 @ MARROWS RD	Principal Arterial vs. Local/Collector	48	16	141	153	\$ 1,059,833.00	162	145
N626	US 40 @ PERCH CREEK DR	Principal Arterial vs. Local/Collector	36	12	209	60	\$ 955,611.00	196	147
N506	DE 72 @ PORTER RD	Minor and Local/Collectors	45	15	154	198	\$ 1,275,906.00	115	148
N142	MARSH RD & SILVERSIDE RD	MInor Arterial vs. Minor Arterial	48	16	140	251	\$ 1,559,375.00	77	149
N215	DE 896 @ US 301	Principal Arterial vs. Local/Collector	46	15.3	146	160	\$ 1,056,079.00	163	150
N028P	US 202 @ CONCORD MALL N	Principal Arterial vs. Local/Collector	43	14.3	164	132	\$ 1,024,339.00	175	151
N230	US 202 @ WOODROW AVE	Principal Arterial vs. Local/Collector	41	13.7	176	101	\$ 941,601.00	201	153
N456T	DEL. RT. 71 & DEL. RT. 299 (BROAD ST. & MAIN ST.)	MInor Arterial vs. Minor Arterial	53	17.7	122	151	\$ 906,097.00	210	154
N180	U.S. 13 & HAZELDELL AVE. (FIRE SIGNAL)	Principal Arterial vs. Local/Collector	43	14.3	165	193	\$ 1,225,437.00	127	155
N495	US 40 @ BROOKMONT DR	Principal Arterial vs. Local/Collector	44	14.7	161	113	\$ 905,192.00	211	157
N697T	WALNUT ST. & "A" ST.	Principal Arterial vs. Local/Collector	35	11.7	217	105	\$ 1,055,516.00	164	158
N407	DEL. RT. 7 & VALLEY RD	Principal Arterial vs. Local/Collector	39	13	184	182	\$ 1,244,224.00	122	160
N108	US 202 @ FAIRFAX BLVD	Principal Arterial vs. Local/Collector	40	13.3	182	110	\$ 949,597.00	198	161
N634	US 202 @ I95 NB RMP	Principal Arterial vs. Minor Arterial	39	13	190	183	\$ 1,245,282.00	121	162
N501	DE 273 @ QUIGLEY BLVD.	Principal Arterial vs. Local/Collector	43	14.3	166	158	\$ 1,039,615.00	171	163
N146	DE 92 @ FOULK RD	Principal Arterial vs. Minor Arterial	45	15	152	199	\$ 1,134,217.00	150	164
N164	DE 41 @ OLD CAPITOL TRL	Principal Arterial vs. Local/Collector	38	12.7	192	209	\$ 1,297,774.00	112	168
N144	DE 92 @ MARSH RD	Principal Arterial vs. Minor Arterial	41	13.7	177	142	\$ 941,252.00	202	170
N365	DE 72 & POLLY DRUMMOND HILL RD	MInor Arterial vs. Minor Arterial	38	12.7	191	220	\$ 1,249,232.00	120	174
N484	GOV PRINTZ BLVD @ EDGEMORE RD	MInor Arterial vs. Minor Arterial	44	14.7	158	178	\$ 958,480.00	195	175
N548	DE 896 @ BETHEL CHURCH	Principal Arterial vs. Local/Collector	39	13	189	230	\$ 1,255,292.00	118	176
N261	DE 7 @ SKYLINE DR	Principal Arterial vs. Local/Collector	37	12.3	198	134	\$ 911,592.00	208	177
N288	DEL. RT. 52 & JACKSON ST. (DEL. AVE & JACKSON)	Principal Arterial vs. Local/Collector	37	12.3	203	190	\$ 1,135,896.00	149	178
N264	NEW CASTLE AVE @ TERMINAL AVE	Minor and Local/Collectors	33	11	232	125	\$ 993,830.00	185	179
N702	US 301 @ MARL PIT RD	Principal Arterial vs. Local/Collector	45	15	157	219	\$ 1,039,632.00	170	181
N313	US 9 @ CHERRY LANE	Minor and Local/Collectors	45	15	149	208	\$ 978,992.00	189	182
N315	DE 273 @ BROWNLEAF RD	Principal Arterial vs. Local/Collector	32	10.7	246	115	\$ 990,461.00	187	183
N358	DE 2 @ ALBERTSON DR	Principal Arterial vs. Local/Collector	47	15.7	143	212	\$ 941,803.00	200	185
N596	CHURCHMANS RD @ GEOFFRY DR	Minor and Local/Collectors	49	16.3	138	197	\$ 872,293.00	220	187

Statewide Intersection Crash Rankings (New Castle County Locations) 2019-21

ID	Intersection Location	Intersection Road Classifications	Total Crashes 2019-21	Avg. Annual 2019 -21	Frequency Rank 2019- 21	Severity Rank 2019- 21	Total Cost of Crashes by Manner of Impact	Manner of Impact Rank	Final Statewide Ranking (Out of 288)
N168	CENTERVILLE RD & BOXWOOD RD	Minor and Local/Collectors	39	13	185	184	\$ 975,798.00	190	190
N561	US 13 @ DUCK CREEK RD	Principal Arterial vs. Minor Arterial	38	12.7	193	129	\$ 760,120.00	244	194
N117	BUS 13 @ DARLEY RD	Principal Arterial vs. Local/Collector	34	11.3	221	177	\$ 1,019,474.00	178	196
N472	DEL. RT. 7 & RIVERSEND DR.(CROFTON)	Principal Arterial vs. Local/Collector	32	10.7	237	196	\$ 1,146,206.00	144	197
N356	DE 7 @ LINDEN HILL RD	Principal Arterial vs. Minor Arterial	45	15	150	200	\$ 781,650.00	237	198
N791	US 13 @ SR 1 RAMP (NORTH)	Principal Arterial vs. Minor Arterial	30	10	266	119	\$ 924,025.00	205	199
N228	DEL. RT. 4/ MARYLAND AVE. & BROOM ST.	Principal Arterial vs. Minor Arterial	37	12.3	207	210	\$ 1,030,422.00	174	201
N390	RED MILL RD & RUTHAR DR.	Minor and Local/Collectors	35	11.7	213	187	\$ 971,774.00	191	202
N522	DEL. RT. 273 & DEL. RT. 1 S.B. OFF RAMP	Principal Arterial vs. Principal Arterial	48	16	142	223	\$ 840,264.00	227	203
N136	DEL. RT. 896 & FOUR SEASONS PKWY	Principal Arterial vs. Local/Collector	42	14	169	162	\$ 700,655.00	262	204
N659	DE 299 @ BRICKMILL RD	Minor and Local/Collectors	34	11.3	224	188	\$ 990,564.00	186	206
N639	ELKTON RD @ CASHO MILL RD	Principal Arterial vs. Local/Collector	34	11.3	223	165	\$ 884,478.00	214	207
N247	DE 273 @ MARROWS RD	Principal Arterial vs. Local/Collector	37	12.3	204	225	\$ 1,023,207.00	176	209
N038P	DE 2 @ ELSMERE SHP CNTR	Principal Arterial vs. Local/Collector	35	11.7	218	218	\$ 1,046,107.00	169	210
N036P	SR 7 @ SONGSMITH DR	Principal Arterial vs. Local/Collector	37	12.3	199	234	\$ 1,002,016.00	179	211
N127	BUS 13 @ EDGEMOOR RD	Principal Arterial vs. Local/Collector	30	10	259	211	\$ 1,151,207.00	143	212
N417T	DE 2 @ ACADEMY ST	Principal Arterial vs. Local/Collector	33	11	230	155	\$ 781,557.00	238	213
N479	US 202 @ WIDENER U	Principal Arterial vs. Local/Collector	40	13.3	181	213	\$ 818,384.00	232	215
N129	DE 2 @ ST JAMES CHRCH RD	Principal Arterial vs. Local/Collector	37	12.3	200	191	\$ 752,226.00	245	216
N685T	4TH ST. & KING ST.	Principal Arterial vs. Minor Arterial	31	10.3	250	233	\$ 1,121,641.00	153	217
N726	US 301 @ LEVELS RD	Principal Arterial vs. Local/Collector	38	12.7	194	175	\$ 670,742.00	268	219
N166	DE 2 @ DE 72	Principal Arterial vs. Local/Collector	39	13	186	239	\$ 873,597.00	219	220
N212	43RD ST @ MARKET ST	Minor and Local/Collectors	30	10	253	203	\$ 981,891.00	188	221
N175	US 9 @ ROGERS RD / SUTTON LANE	Minor and Local/Collectors	37	12.3	201	202	\$ 747,835.00	246	222
N406	CHURCHMANS @ CENTER POINT	Minor and Local/Collectors	37	12.3	205	235	\$ 879,016.00	217	224
N703T	DE 299 @ INDUSTRIAL DR	Minor and Local/Collectors	36	12	210	194	\$ 717,923.00	258	225
N686T	4TH ST. & WALNUT ST.	Principal Arterial vs. Minor Arterial	30	10	265	180	\$ 853,040.00	223	226
N176	SALEM CHURCH RD @ CHAPMAN RD	Minor Arterial vs. Minor Arterial	35	11.7	215	242	\$ 885,277.00	213	227
N160	DEL. RT. 41 & HERCULES RD / MILLCREEK RD	Principal Arterial vs. Local/Collector	32	10.7	241	215	\$ 880,013.00	215	228
N577	DE 72 @ DE 1 S.B. OFF RMP	Principal Arterial vs. Minor Arterial	39	13	188	261	\$ 851,094.00	224	229
N489	DEL. RT. 896 & PENCADER CORP.	Principal Arterial vs. Local/Collector	29	9.7	274	166	\$ 797,963.00	234	230
N237	US 13 @ LLANGOLLEN BLVD	Principal Arterial vs. Local/Collector	29	9.7	273	195	\$ 909,986.00	209	231
N396	JAMES ST. & MARKET ST.	Principal Arterial vs. Local/Collector	34	11.3	219	252	\$ 913,131.00	207	232
N207	DEL. RT. 41 & MILLTOWN RD / JACKSON AVE	Principal Arterial vs. Local/Collector	37	12.3	197	256	\$ 845,135.00	226	234
N583	DE 2 @ KIRKWOOD PLAZA	Principal Arterial vs. Local/Collector	32	10.7	244	216	\$ 846,860.00	225	236
N017P	DE 2 @ HASKELL RD	Principal Arterial vs. Local/Collector	32	10.7	240	185	\$ 696,685.00	263	238
N236	FOULK RD @ MURPHY RD	Minor and Local/Collectors	29	9.7	272	167	\$ 727,872.00	252	239
N474	OLD BALT. PIKE & FIXES CORNER S. SALEM CHURCH RD	Minor and Local/Collectors	32	10.7	238	217	\$ 777,455.00	240	241

Statewide Intersection Crash Rankings (New Castle County Locations) 2019-21

ID	Intersection Location	Intersection Road Classifications	Total Crashes 2019-21	Avg. Annual 2019 -21	Frequency Rank 2019- 21	Severity Rank 2019- 21	Total Cost of Crashes by Manner of Impact	Manner of Impact Rank	Final Statewide Ranking (Out of 288)
N152	DE 2 @ MILLTOWN RD	Principal Arterial vs. Minor Arterial	35	11.7	216	249	\$ 794,909.00	235	242
N646	US 40 @ LAGRANGE AVE	Principal Arterial vs. Local/Collector	34	11.3	225	254	\$ 861,990.00	221	243
N216	DE 896 @ DE 71	Principal Arterial vs. Local/Collector	30	10	254	264	\$ 998,007.00	182	244
N588	DE 273 @ RUTHAR	Principal Arterial vs. Local/Collector	34	11.3	222	263	\$ 858,159.00	222	245
N333	DE 2 @ CLIFTON AVE	Principal Arterial vs. Local/Collector	33	11	229	245	\$ 811,101.00	233	246
N167	DE 7 @ JANEWAY	Principal Arterial vs. Local/Collector	37	12.3	202	236	\$ 633,628.00	273	247
N438T	DE 896 @ W. PARK PL.	Principal Arterial vs. Local/Collector	30	10	257	226	\$ 828,330.00	229	248
N477	DEL. RT. 4/ MARYLAND AVE. & ROBINSON LANE / CLAYTON	Principal Arterial vs. Local/Collector	29	9.7	269	255	\$ 961,363.00	193	249
N102	US 202 @ SILVERSIDE RD	Principal Arterial vs. Minor Arterial	39	10.3	247	272	\$ 938,048.00	203	250
N159	DEL. RT. 41 & YORKLYN RD	Principal Arterial vs. Local/Collector	31	10.3	248	221	\$ 712,279.00	259	251
N193	US 13 @ DE 72	Minor Arterial vs. Minor Arterial	32	10.7	242	241	\$ 741,728.00	249	252
N331	DE 92 @ SHIPLEY RD	Principal Arterial vs. Local/Collector	34	11.3	227	269	\$ 778,993.00	239	253
N514	U.S. 40 & WILTON BLVD.	Principal Arterial vs. Local/Collector	31	10.3	249	222	\$ 686,935.00	265	254
N463	U.S. 13 & DEL. RT. 299 (SOUTHBOUND)	Minor Arterial vs. Minor Arterial	30	10	256	257	\$ 822,115.00	231	255
N325	DE 141 @ AIRPORT RD	Principal Arterial vs. Local/Collector	32	10.7	236	246	\$ 691,463.00	264	256
N679	M. L. KING BLVD & S. MADISON ST	Principal Arterial vs. Minor Arterial	30	10	267	227	\$ 706,128.00	261	261
N418T	DE 2 @ CHAPEL ST	Principal Arterial vs. Minor Arterial	30	10	258	265	\$ 788,947.00	236	263
N530	US 13 @ WILDEL AVE	Principal Arterial vs. Local/Collector	33	11	233	259	\$ 661,461.00	270	265
N405	MILLTOWN RD & MCKENNANS CHURCH RD	Minor Arterial vs. Minor Arterial	29	9.7	275	260	\$ 836,541.00	228	266
N089P	DE 273 & CENTER POINT IND. PARK (AMAZON)	Principal Arterial vs. Local/Collector	32	10.7	239	275	\$ 741,034.00	250	267
N248	DE 2 @ MEADOWOOD DR	Principal Arterial vs. Local/Collector	30	10	260	274	\$ 822,362.00	230	268
N040P	U.S. 40 & EDEN SQUARE	Principal Arterial vs. Local/Collector	34	11.3	220	273	\$ 604,983.00	275	269
N408	CHURCHMANS RD @ CONTINENTAL DR	Minor and Local/Collectors	33	11	231	267	\$ 632,052.00	274	270
N517	US 40 @ WALTHER RD	Principal Arterial vs. Local/Collector	30	10	263	258	\$ 739,527.00	251	271
N297	DEL. RT. 48 & CENTERVILLE RD	Principal Arterial vs. Local/Collector	30	10	255	270	\$ 741,990.00	248	272
N299	BUS 13 @ ALCOTT AVE	Minor and Local/Collectors	33	11	228	271	\$ 471,132.00	277	273
N525	US 13 @ 2ND AVE	Principal Arterial vs. Local/Collector	30	10	264	244	\$ 670,538.00	269	274
N349	US 202 @ MT LEBANON RD	Principal Arterial vs. Local/Collector	29	9.7	268	276	\$ 743,599.00	247	275
N177	HEALD ST. @ ROGERS RD (DE 13A & ROGERS RD)	Minor and Local/Collectors	29	9.7	271	268	\$ 682,510.00	267	276