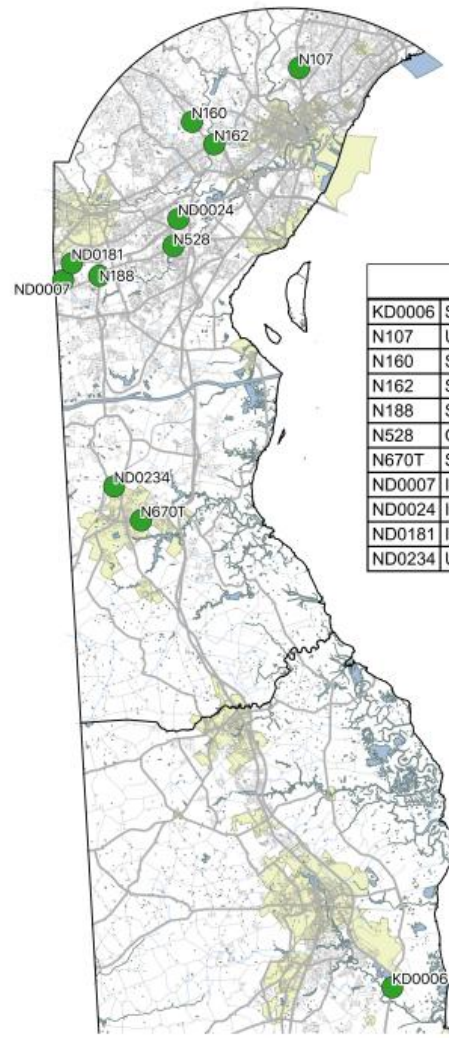


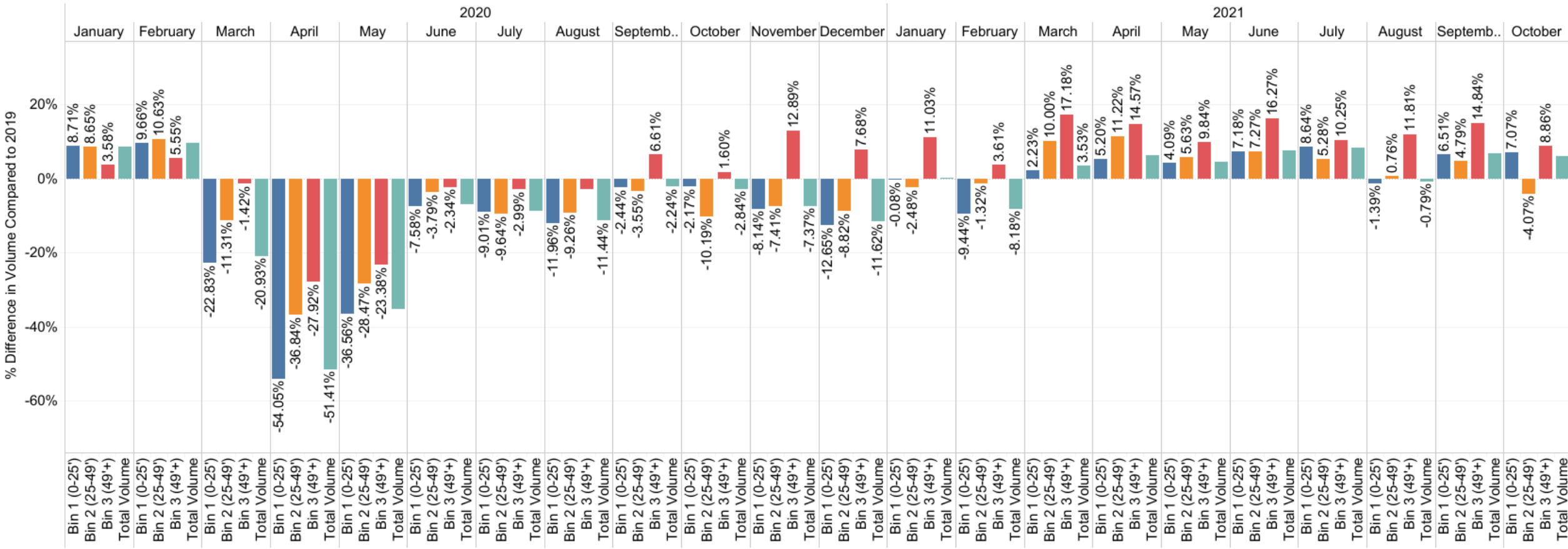
Quarterly COVID Truck Trends-
Summary for WILMAPCO Feb
2022



Data Sites	
KD0006	SR 1 @ Barkers Landing Bridge
N107	US 202 @ Sharpley Rd
N160	SR 141 @ Hercules Rd
N162	SR 2 @ SR 41
N188	SR 896 @ Old Baltimore Pike
N528	Old Baltimore Pike @ Trevett Blvd
N670T	SR 299 & Cleaver Farm Rd
ND0007	I-95 NB @ Otts Chapel Rd
ND0024	I-95 @ SR 1
ND0181	I-95 SB @ Otts Chapel Rd
ND0234	US 301 North of Spur

KD0006 SR 1 @ Barkers Landing Bridge
Percent Difference in Hourly Volume by Vehicle Classification
Data analyzed from January 2019-October 2021

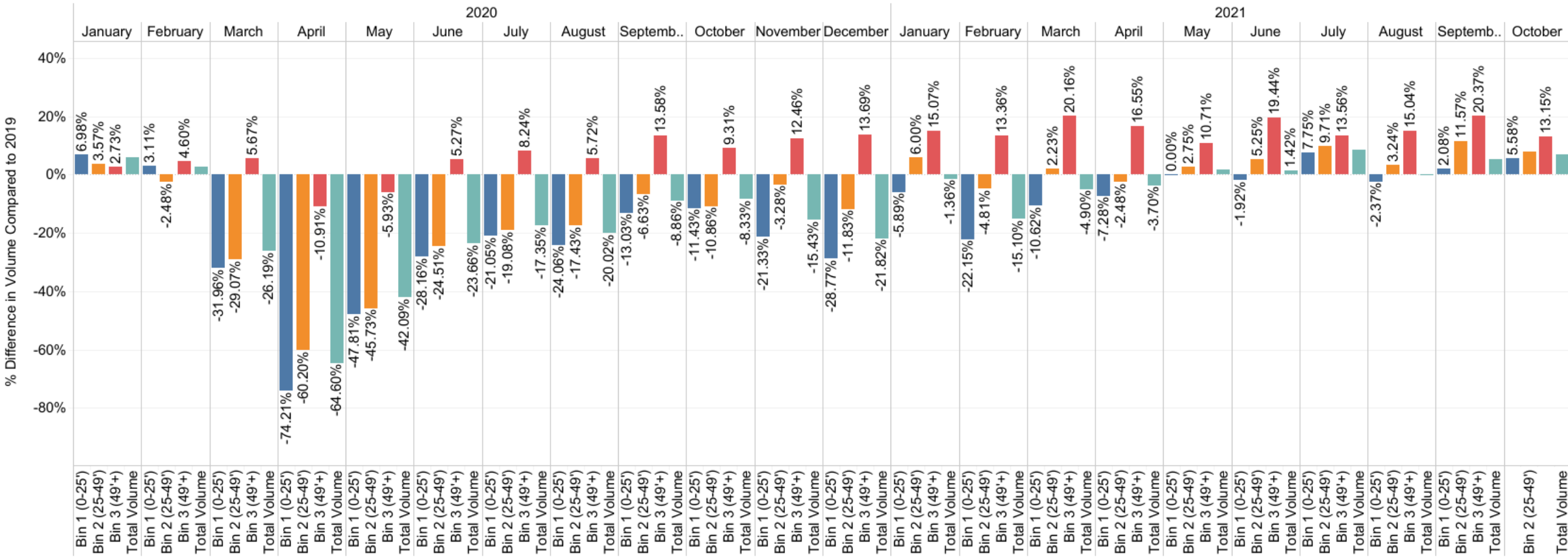
Bin 1 (0-25') Total Volume
 Bin 2 (25-49')
 Bin 3 (49'+)



Data Source: DeIDOT Permit Number KD0006 SR 1 @ Barkers Landing Bridge

ND0007 I-95 NB @ Otts Chapel Rd
Percent Difference in Hourly Volume by Vehicle Classification
 Data analyzed from January 2019-October 2021

Bin 1 (0-25') Bin 3 (49'+)
 Bin 2 (25-49') Total Volume



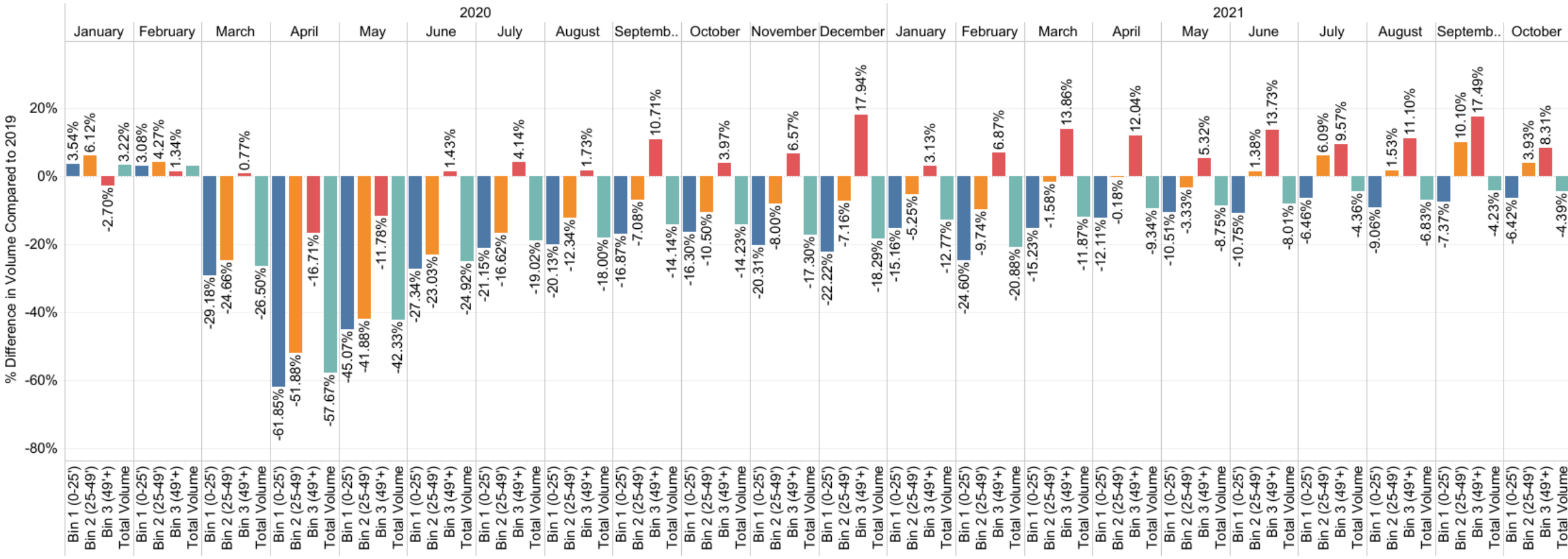
Data Source: DelDOT Permit Number ND0007 I-95 NB @ Otts Chapel Rd

ND0024 I-95 @ SR 1

Percent Difference in Hourly Volume by Vehicle Classification

Data analyzed from January 2019-October 2021

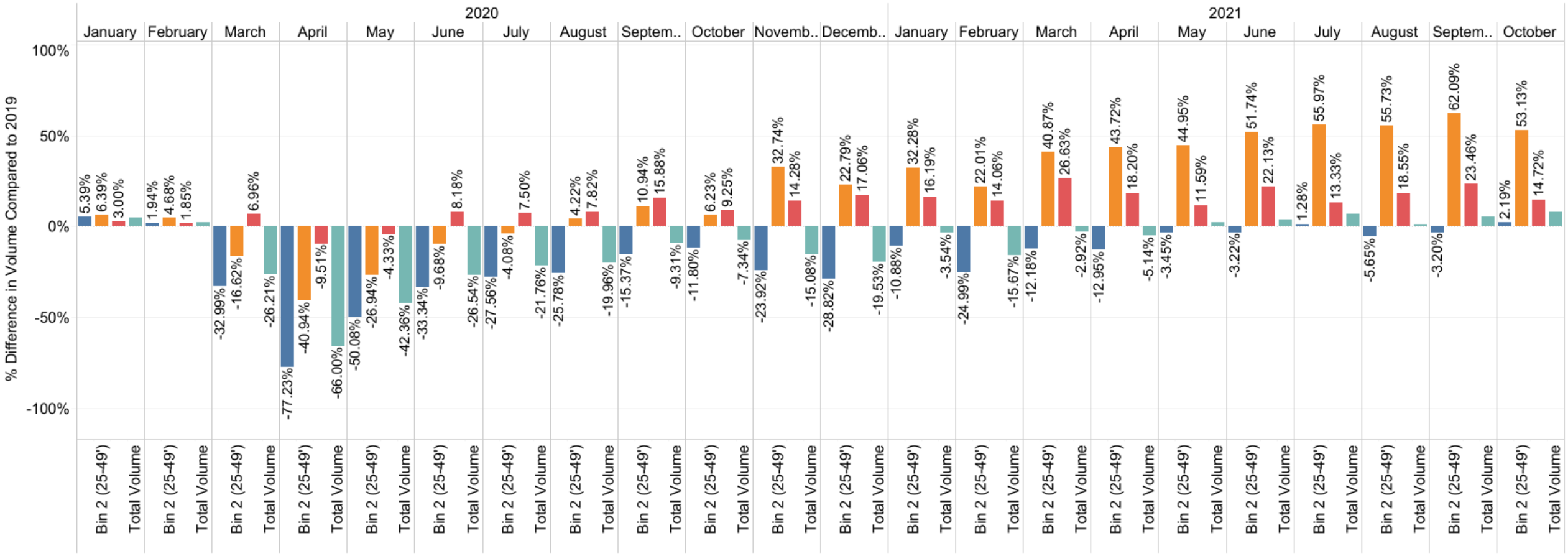
Bin 1 (0-25') Bin 3 (49'+)
Bin 2 (25-49') Total Volume



Data Source: DelDOT Permit Number ND0024 I-95 @ SR 1

ND0181 I-95 SB @ Otts Chapel Rd
Percent Difference in Hourly Volume by Vehicle Classification
Data analyzed from January 2019-October 2021

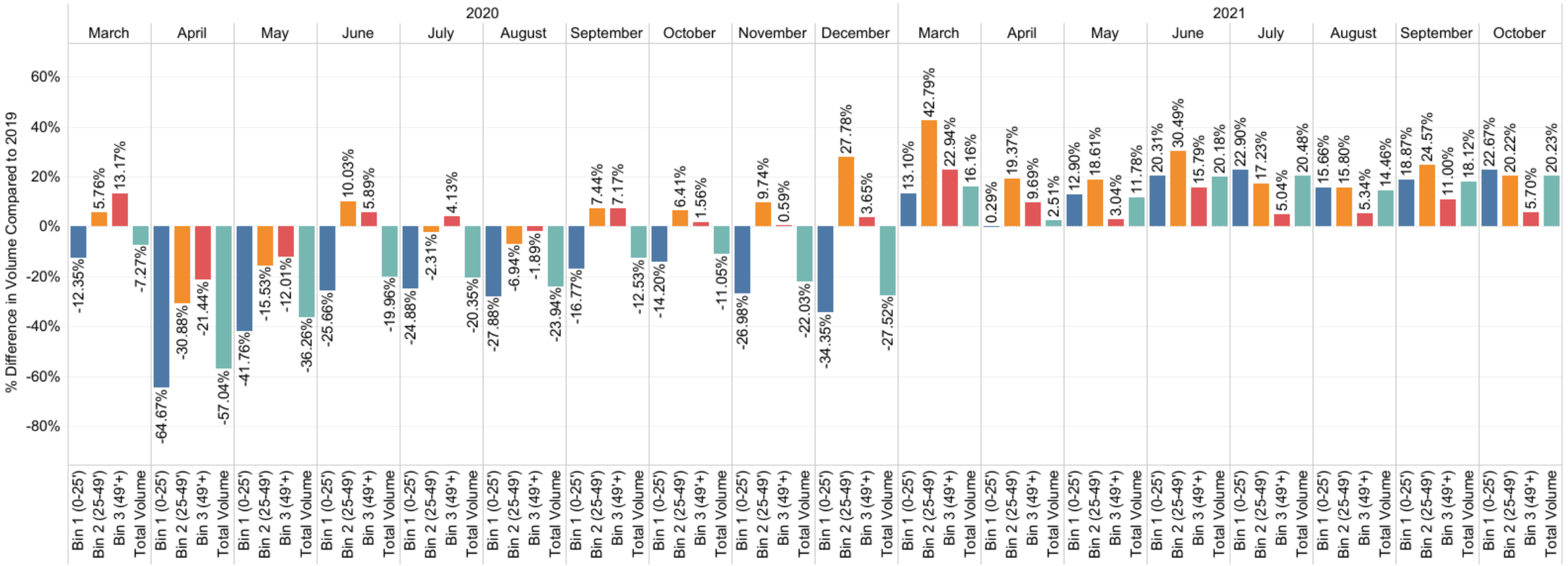
Bin 1 (0-25') Bin 3 (49'+)
 Bin 2 (25-49') Total Volume



Data Source: DelDOT Permit Number ND0181 I-95 SB @ Otts Chapel Rd

ND0234 US 301 North of Spur
Percent Difference in Hourly Volume by Vehicle Classification
 Data analyzed from January 2019-October 2021

Bin 1 (0-25') Bin 2 (25-49') Bin 3 (49'+) Total Volume

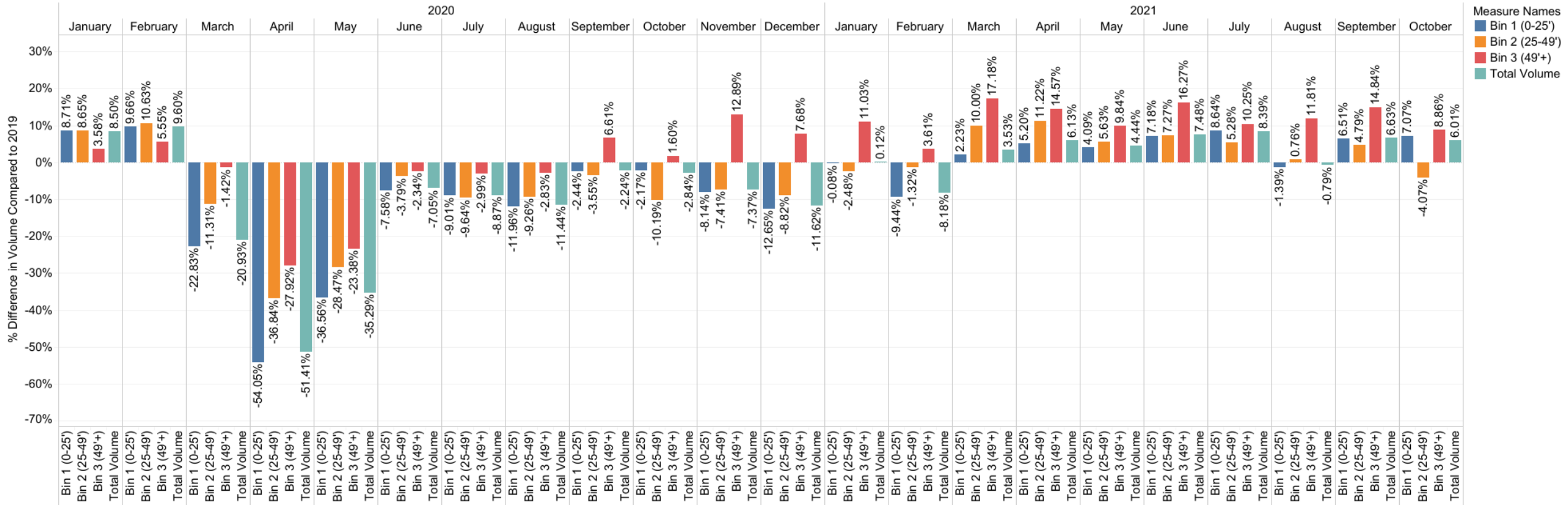


Data Source: DeIDOT Device Permit Number ND0234 US 301 North of Spur
 *US 301 opened to traffic on January 10, 2019. Due to this January and February comparisons are omitted.

KD0006 SR 1 @ Barkers Landing Bridge

Percent Difference in Hourly Volume by Vehicle Classification

Data analyzed from January 2019-October 2021



Measure Names
■ Bin 1 (0-25')
■ Bin 2 (25-49')
■ Bin 3 (49'+)
■ Total Volume