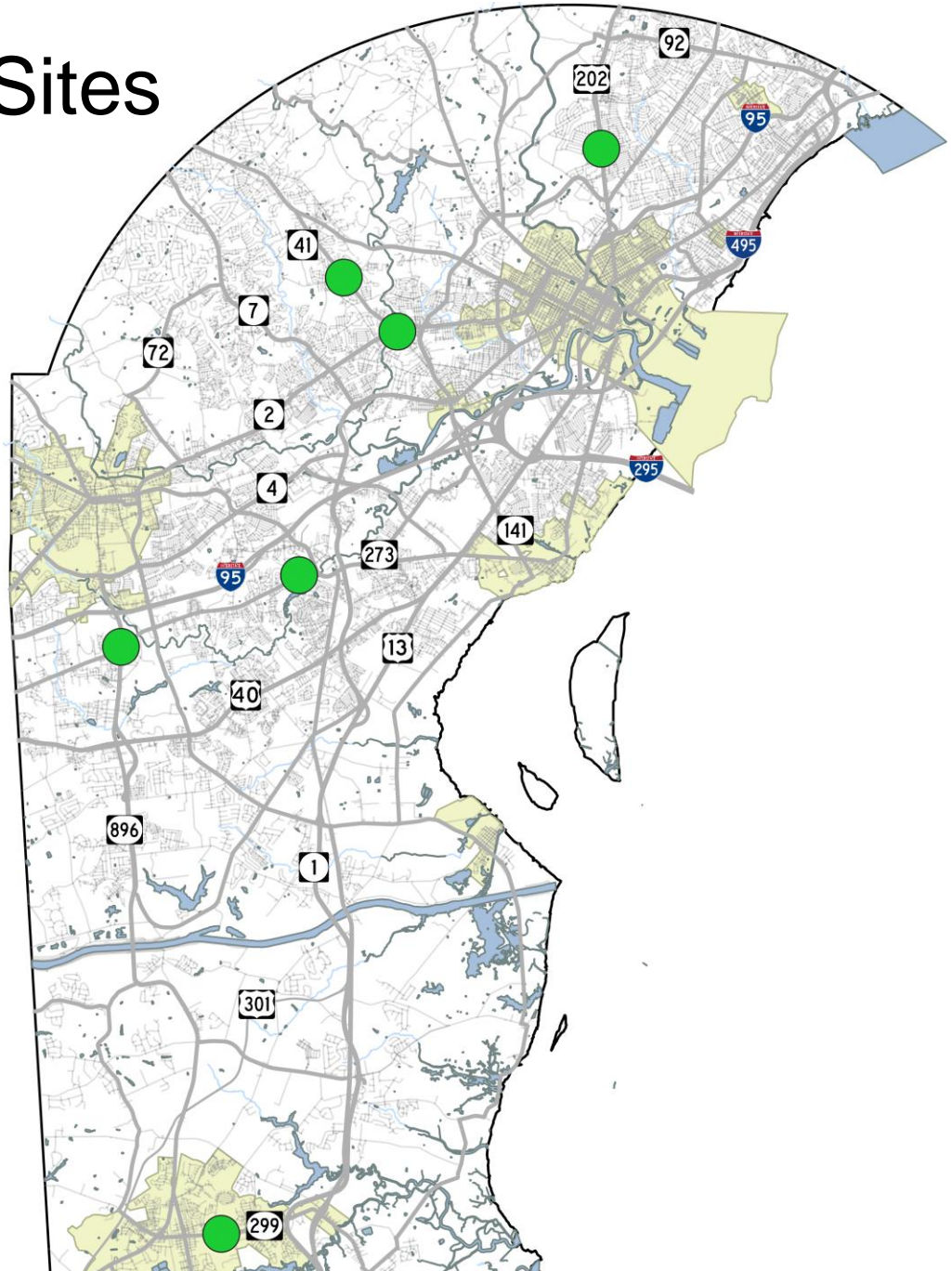


Impacts of COVID-19 on Traffic Volumes at Signalized Intersections in New Castle County, DE

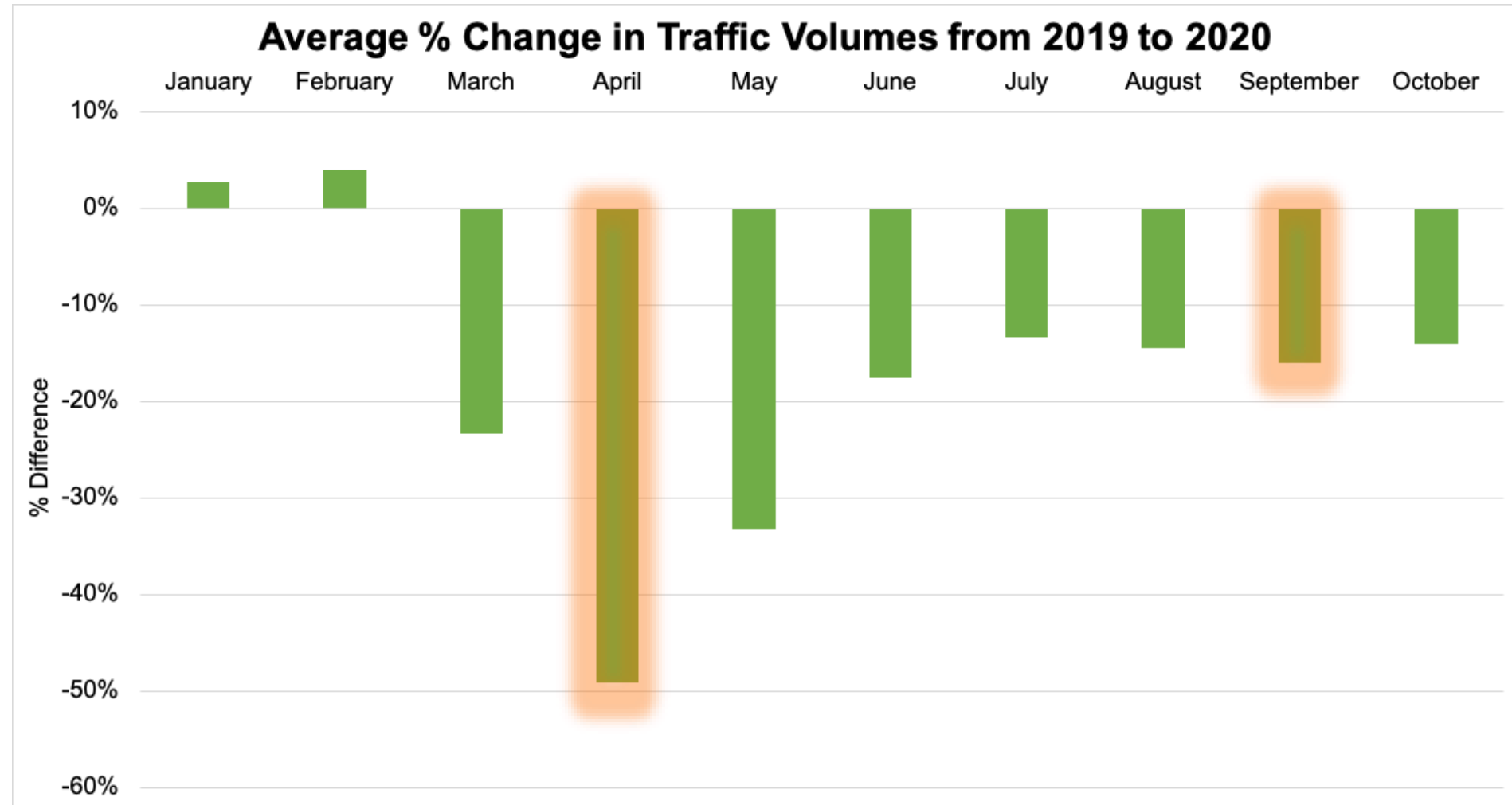
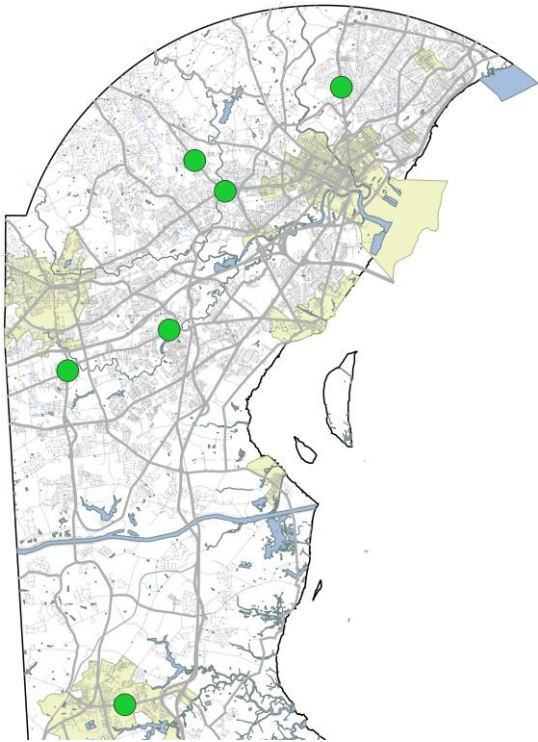
October 30, 2020

COVID-19 Volume Impact Sites

| Site Locations |
|-----------------------------------|
| US 202 & Sharpley Rd |
| SR 41 & Hercules Rd |
| SR 41 & SR 2 |
| Old Baltimore Pike & Trevett Blvd |
| SR 896 & Old Baltimore Pike |
| SR 299 & Cleaver Farm Rd |

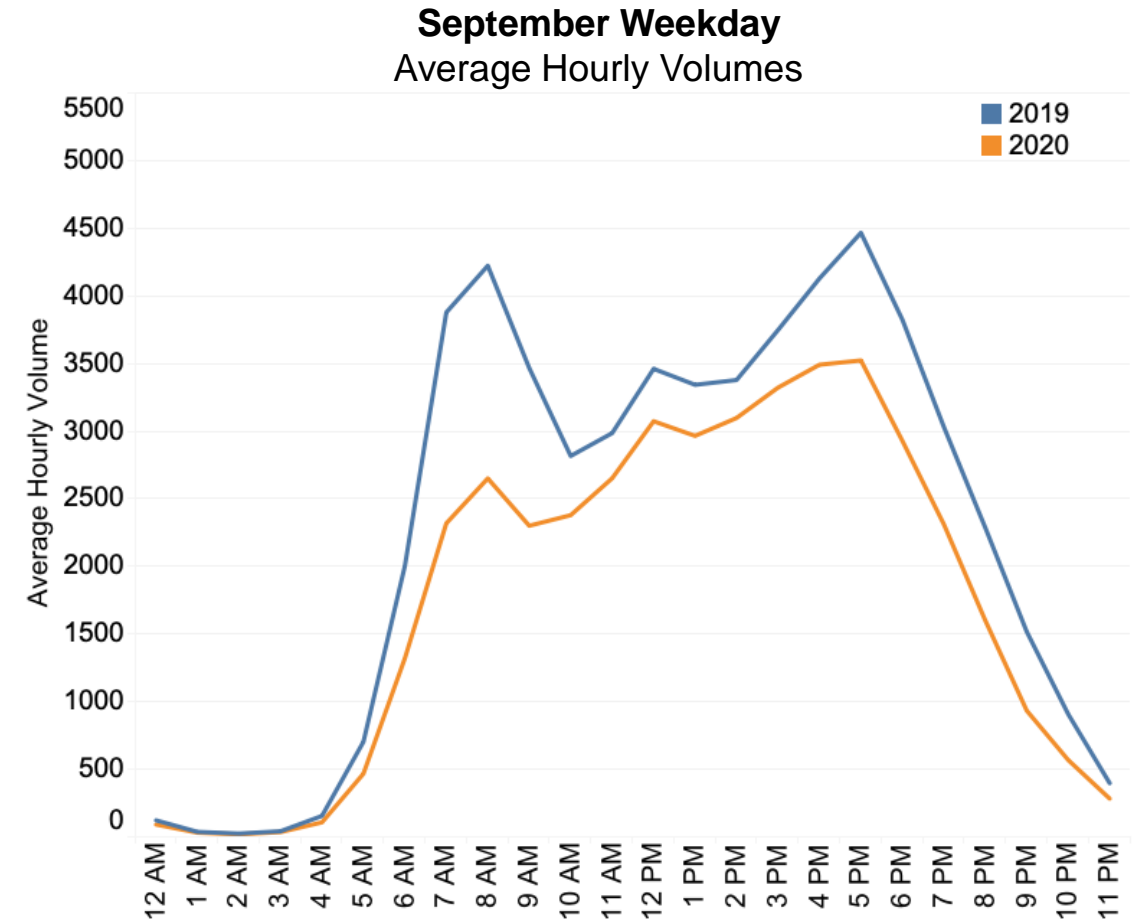
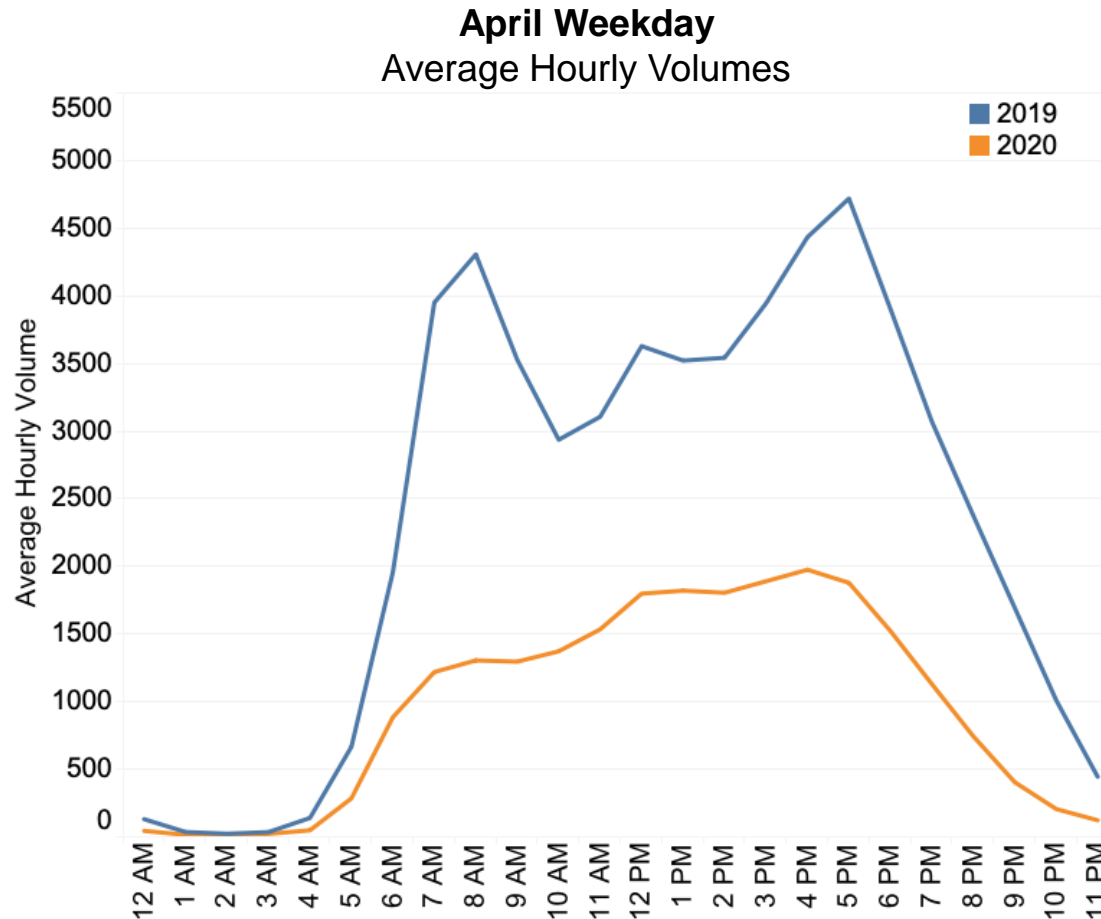


COVID-19 Monthly Volume Impacts



Weekday Volume Trends (US 202 @ Sharpley Rd)

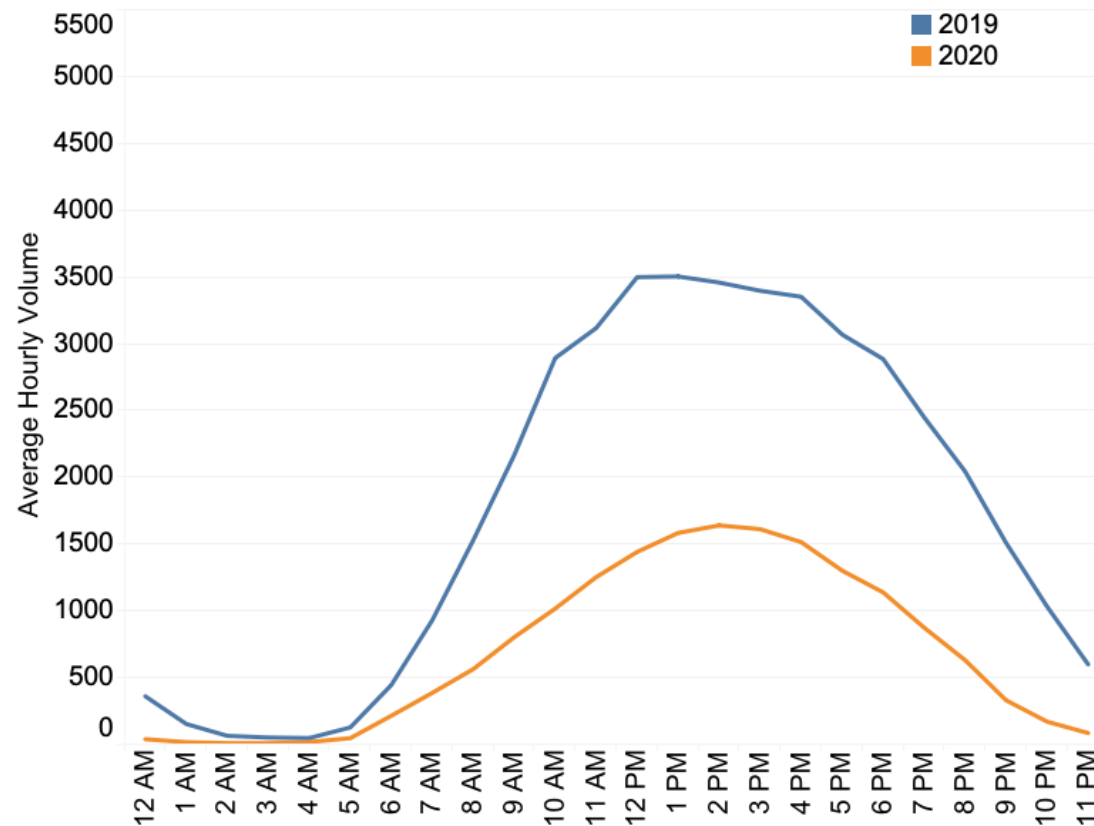
- Hourly volumes decreased drastically in April 2020
- 2020 volumes slowly increased closer to 2019 levels by September
- 2020 AM and PM peaks are less pronounced than in 2019, with mid-day peak hour volumes higher than AM peak hour volumes at most locations in 2020



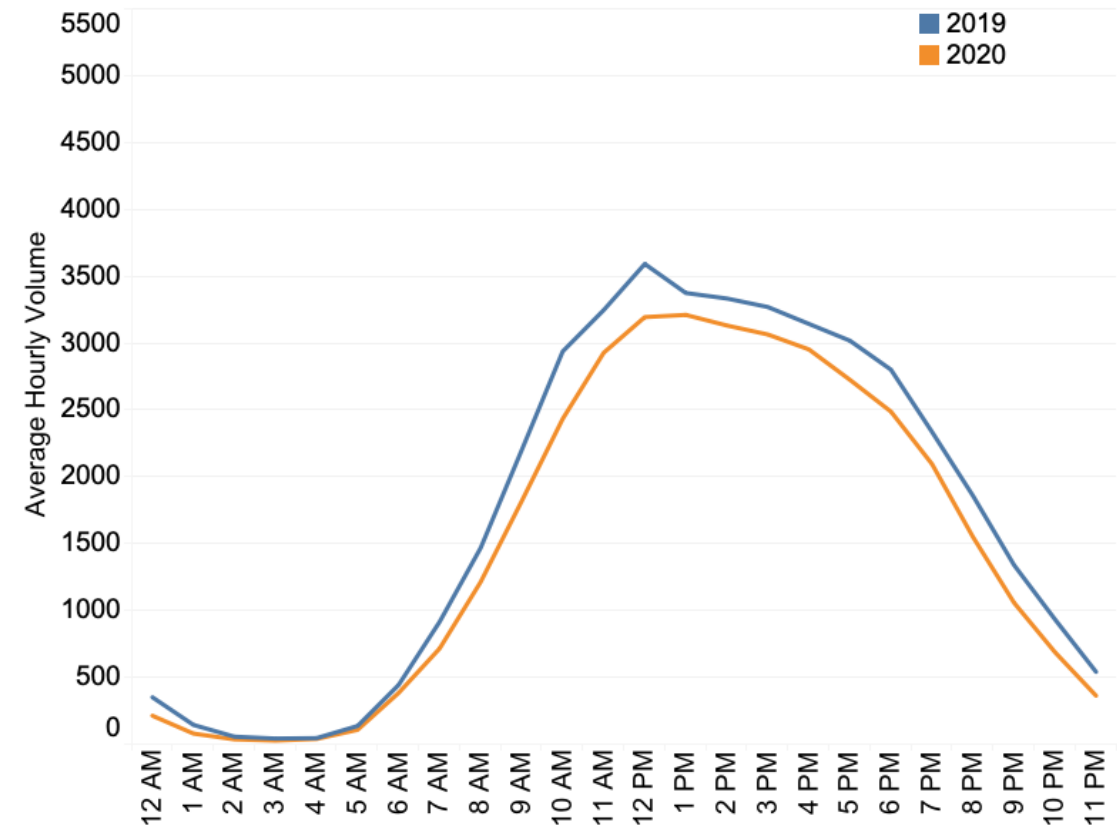
Weekend Volume Trends (US 202 @ Sharpley Rd)

- Volumes also dropped significantly on the weekends, though the general pattern of traffic did not change
- Weekend volumes have bounced back more than weekday volumes, with September 2020 volumes only slightly lower than in 2019
- Some locations have even seen a slight increase in 2020 weekend volumes as compared to 2019

April Weekend
Average Hourly Volumes

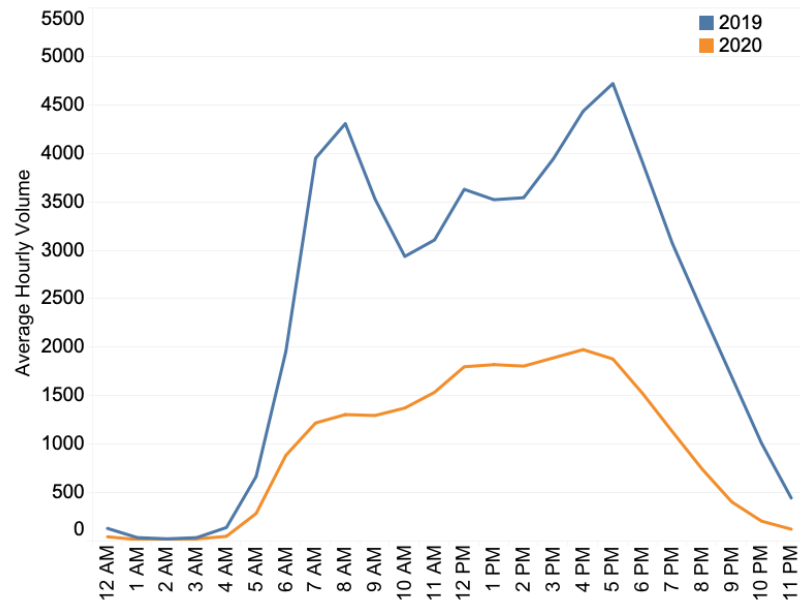


September Weekend
Average Hourly Volumes

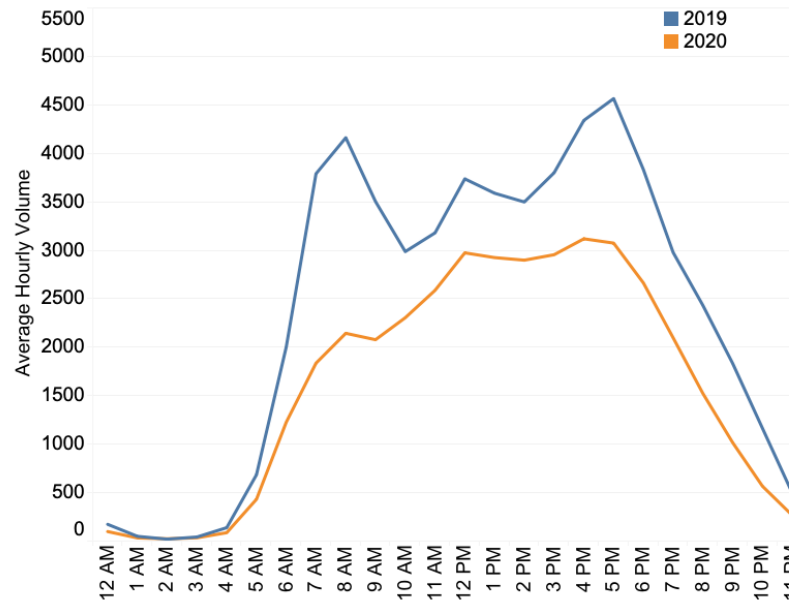


N107 US 202 & Sharpley Rd-Weekday Volumes (T/W/Th)

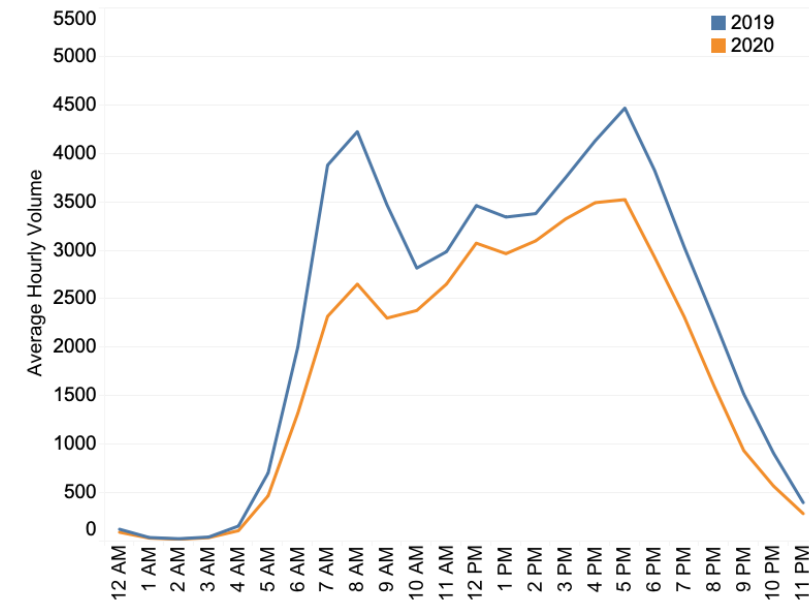
April



June

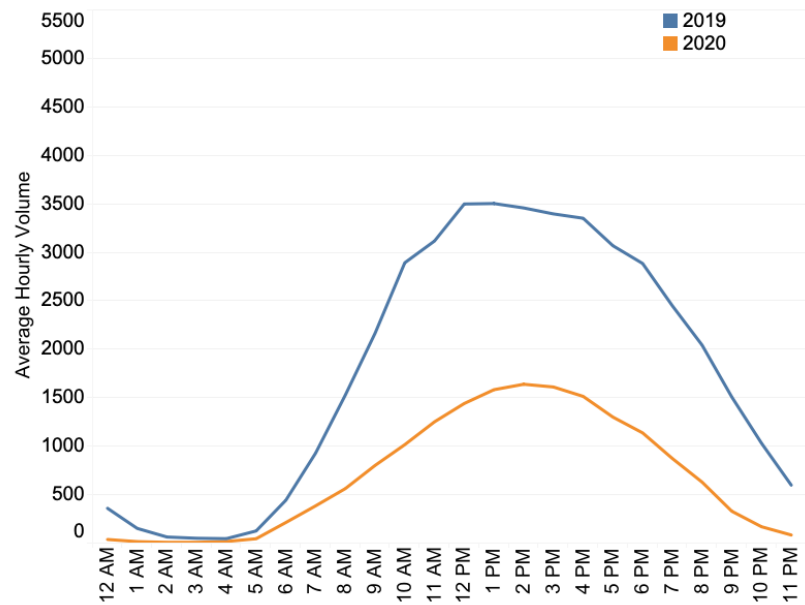


September

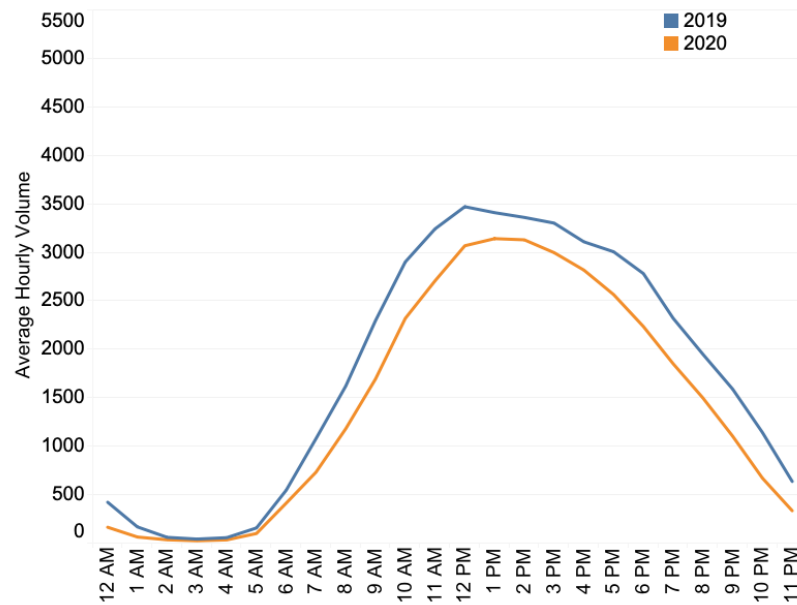


N107 US 202 & Sharpley Rd-Weekend Volumes (Sat/Sun)

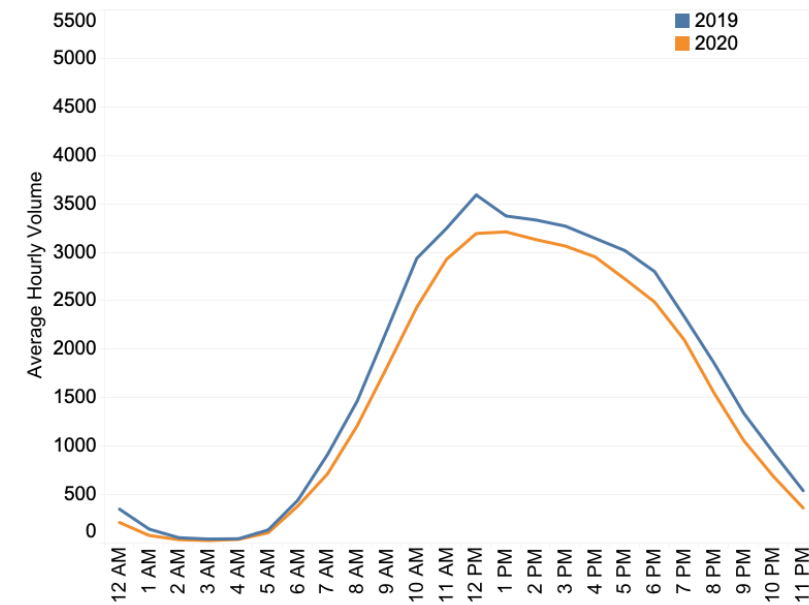
April



June

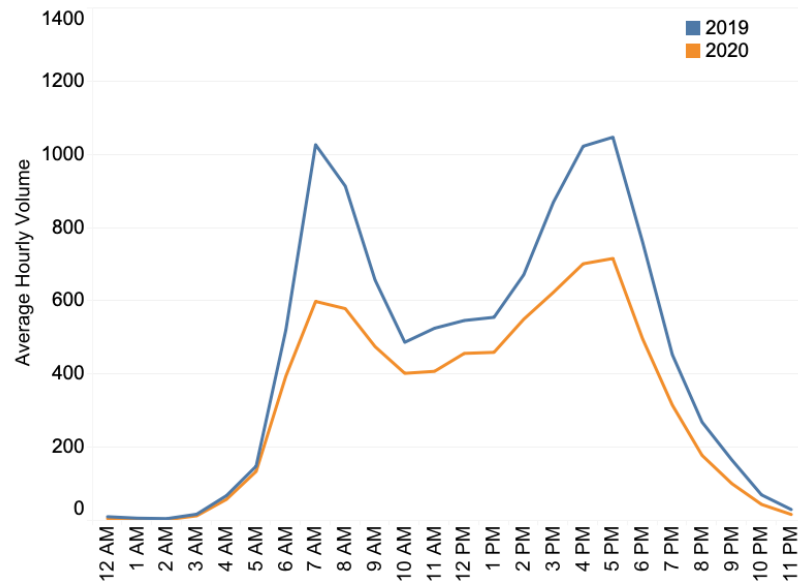


September

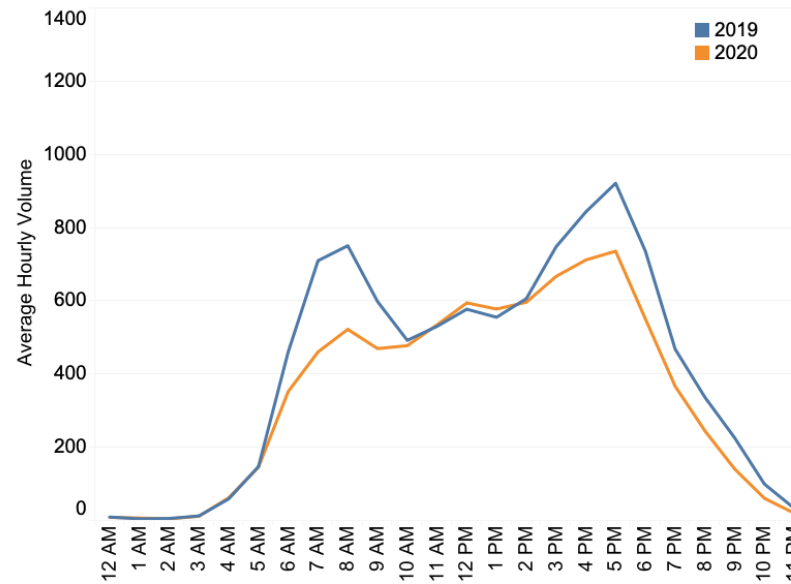


N160 SR 41 & Hercules Rd-Weekday Volumes (T/W/Th)

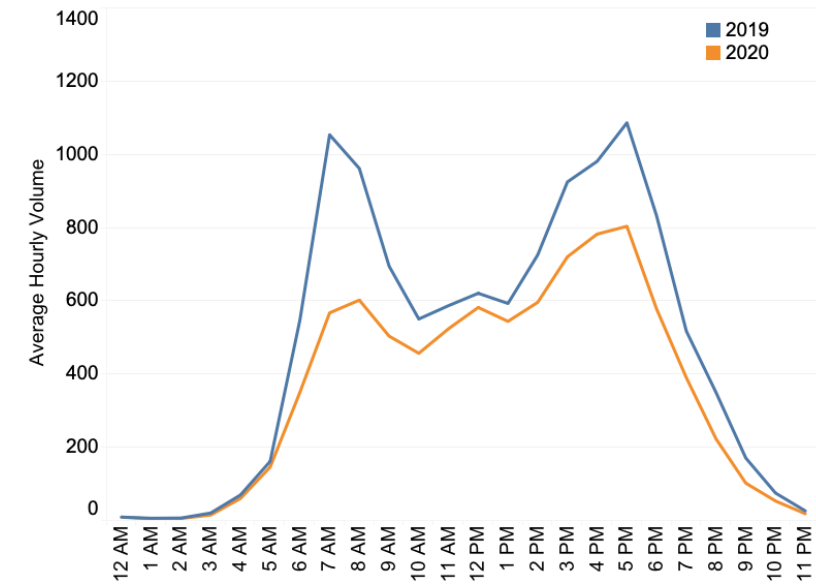
March



June

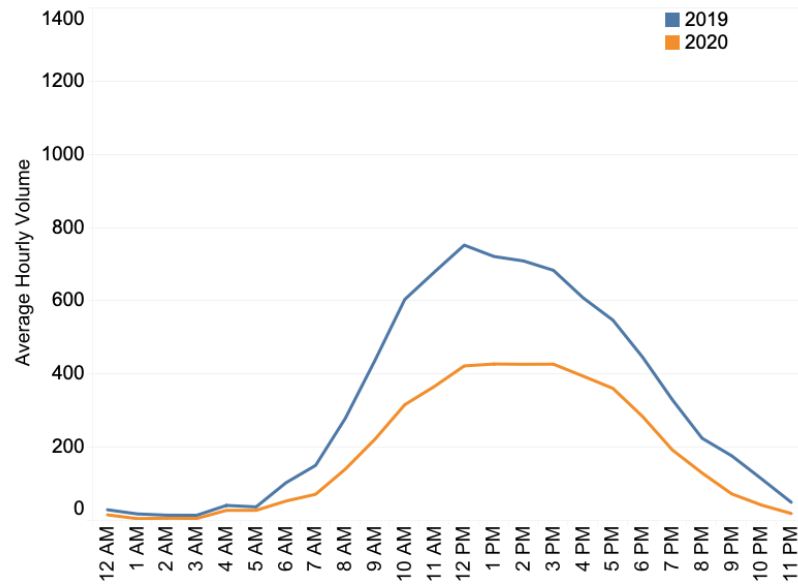


September

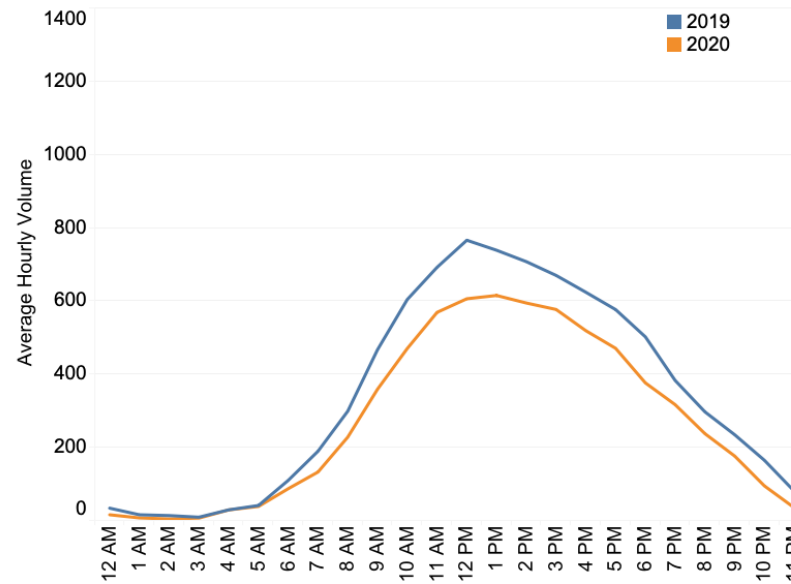


N160 SR 41 & Hercules Rd-Weekend Volumes (Sat/Sun)

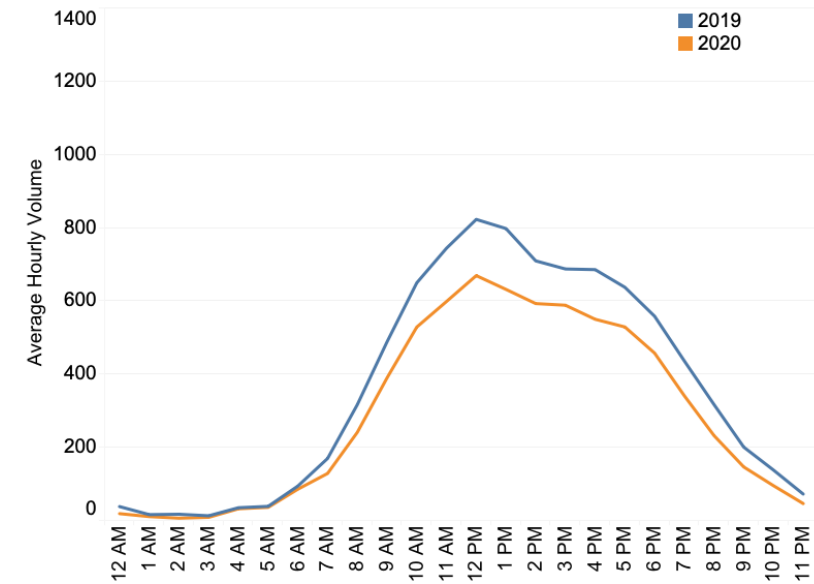
March



June

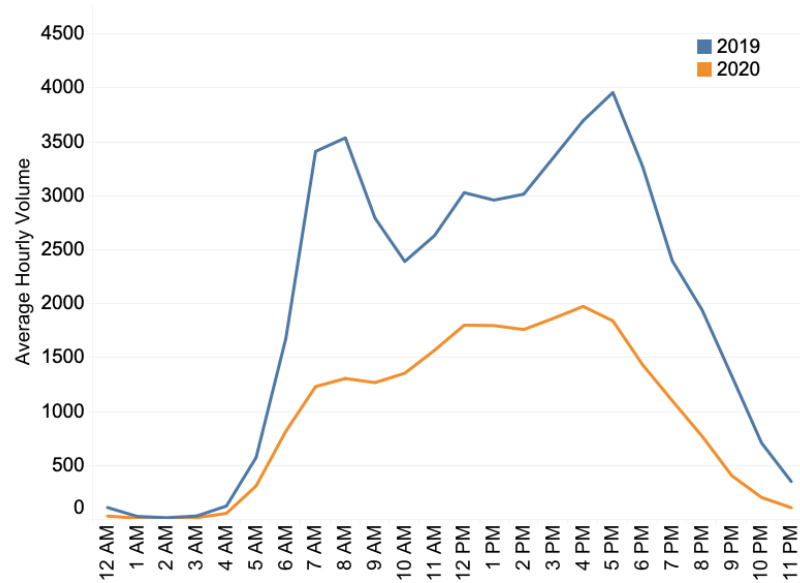


September

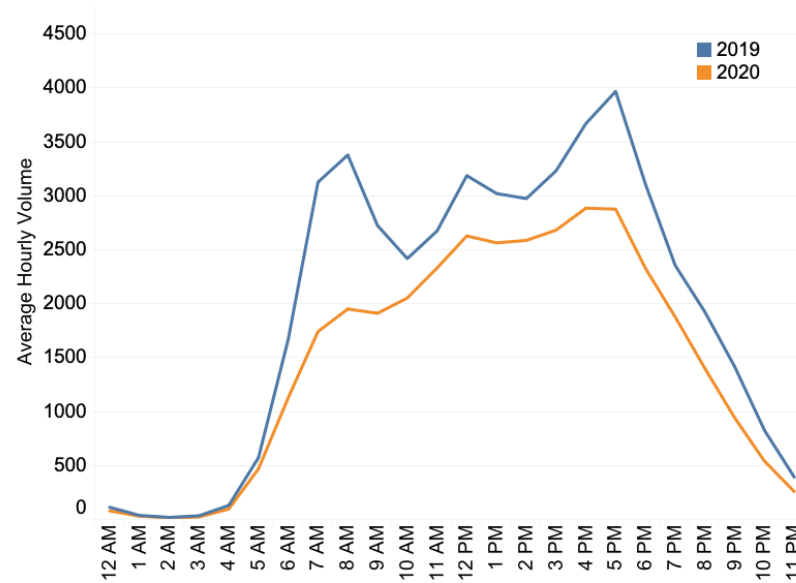


N162 SR 2 & SR 41-Weekday Volumes (T/W/Th)

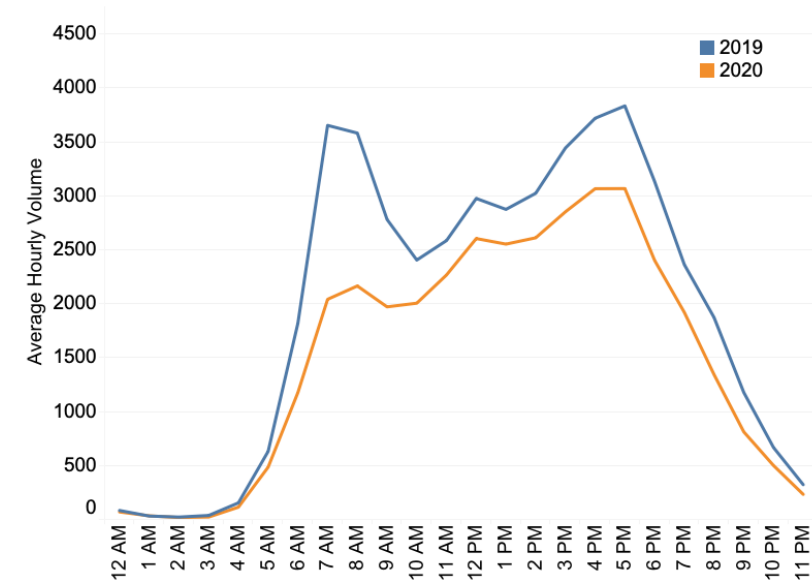
April



June

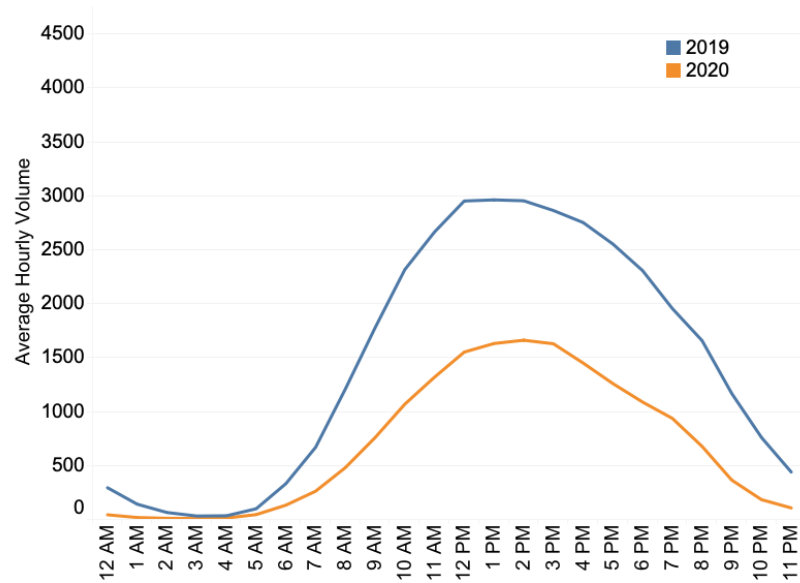


September

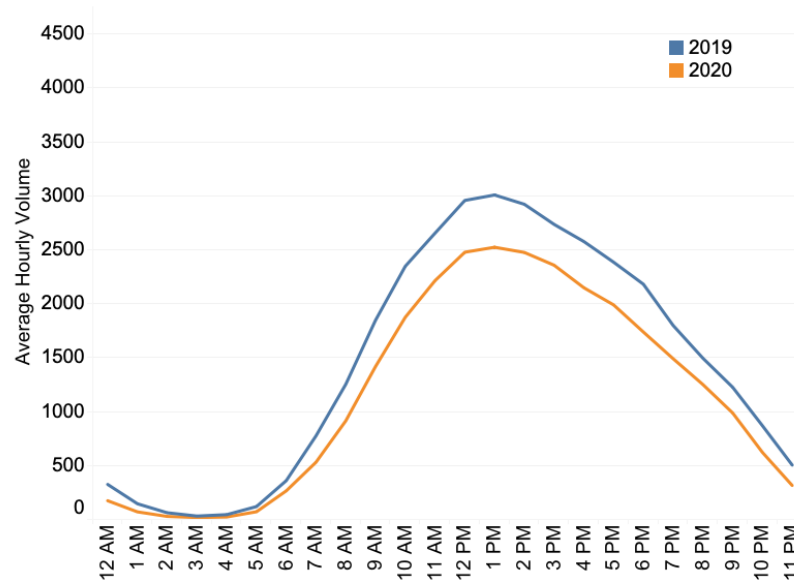


N162 SR 2 & SR 41-Weekend Volumes (Sat/Sun)

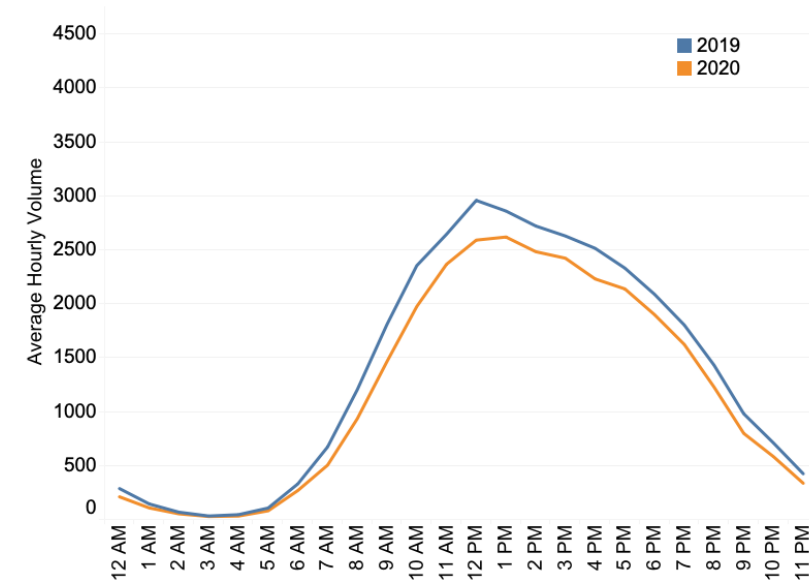
April



June

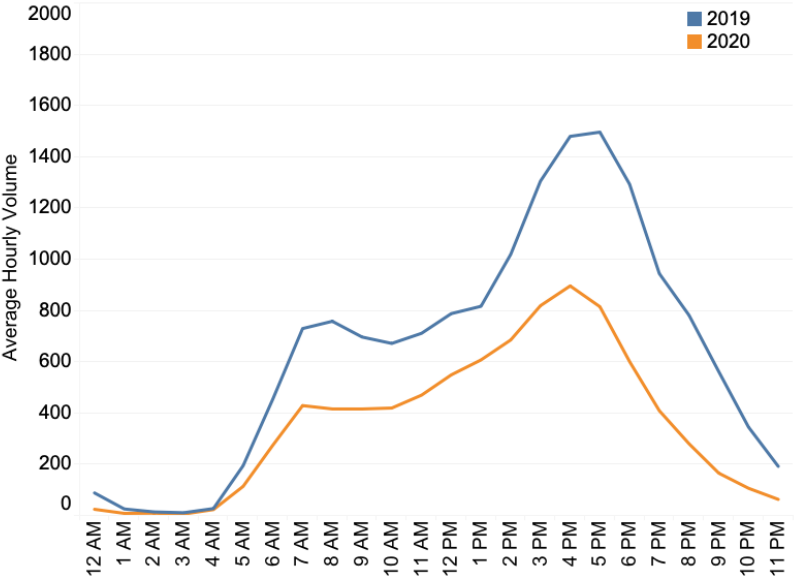


September

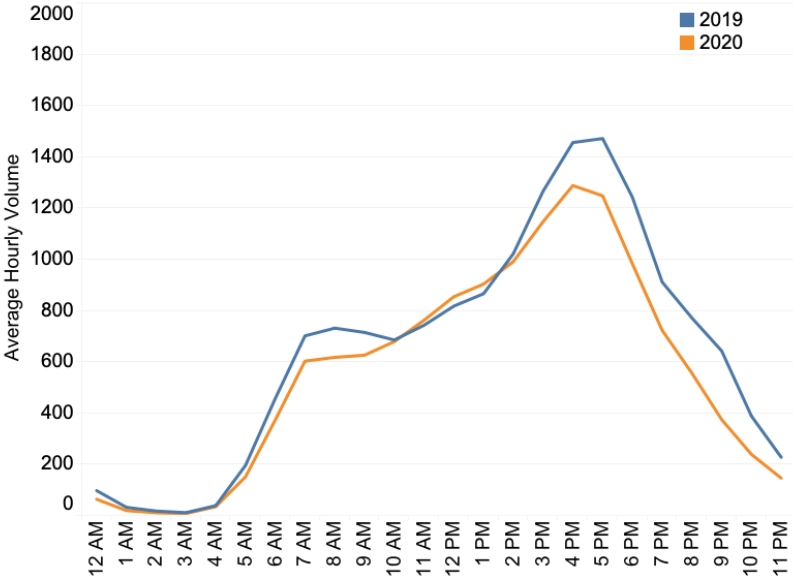


N188 SR 896 & Old Baltimore Pike (EB/WB)-Weekday Volumes (T/W/Th)

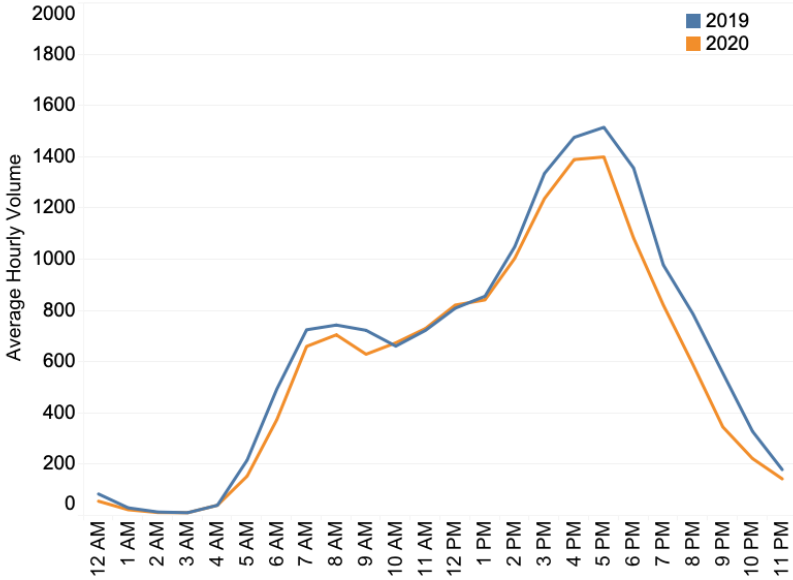
April



June

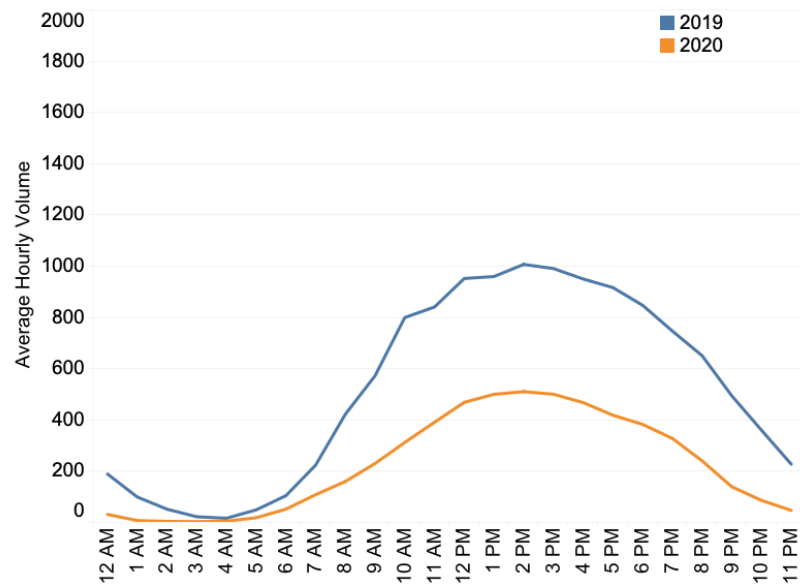


September

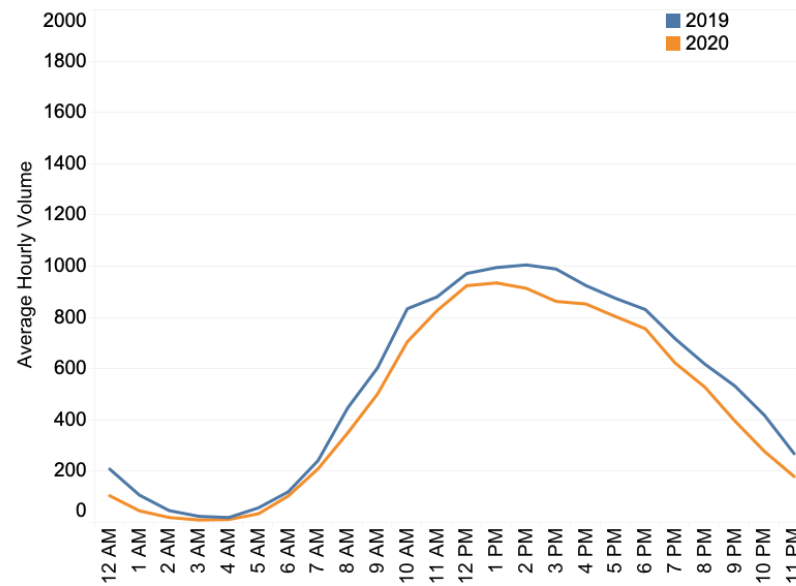


N188 SR 896 & Old Baltimore Pike (EB/WB)-Weekend Volumes (Sat/Sun)

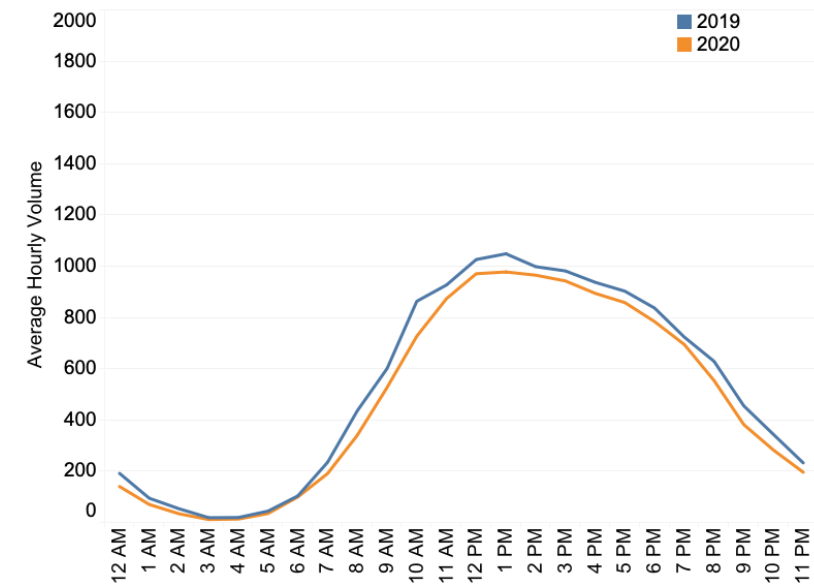
April



June

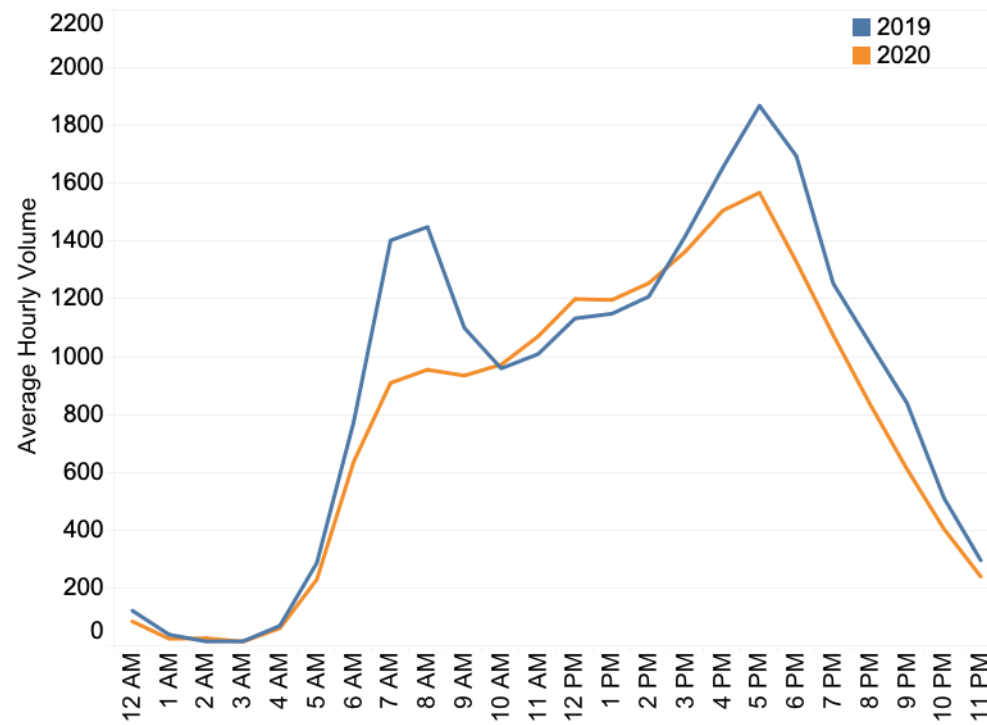


September

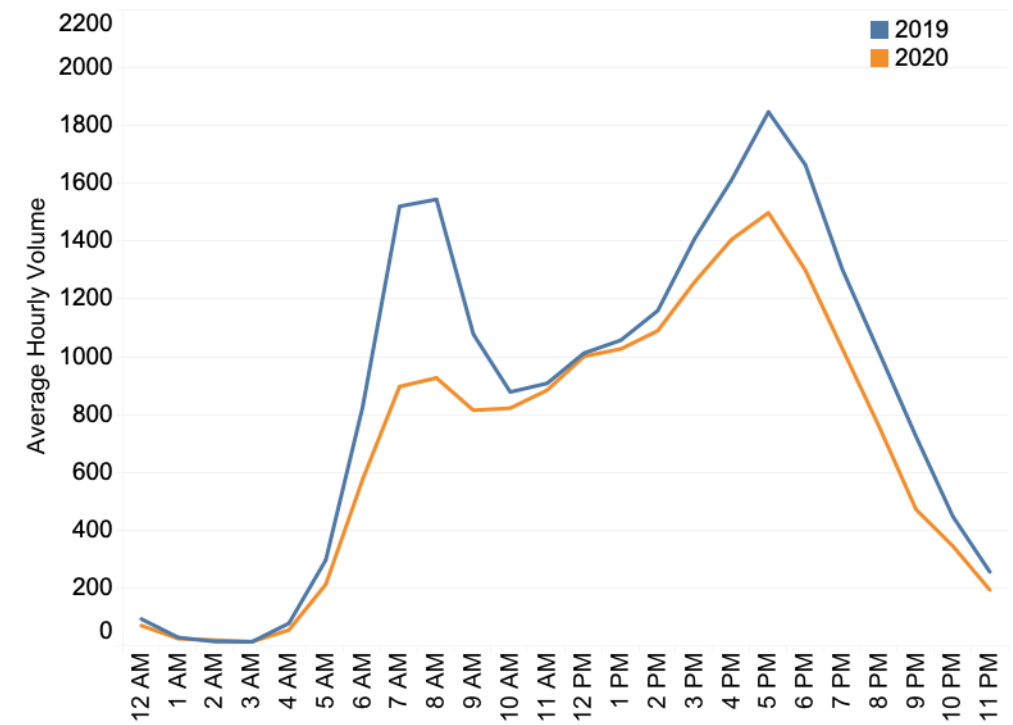


N528 Old Baltimore Pike & Trevett Blvd-Weekday Volumes (T/W/Th)

June

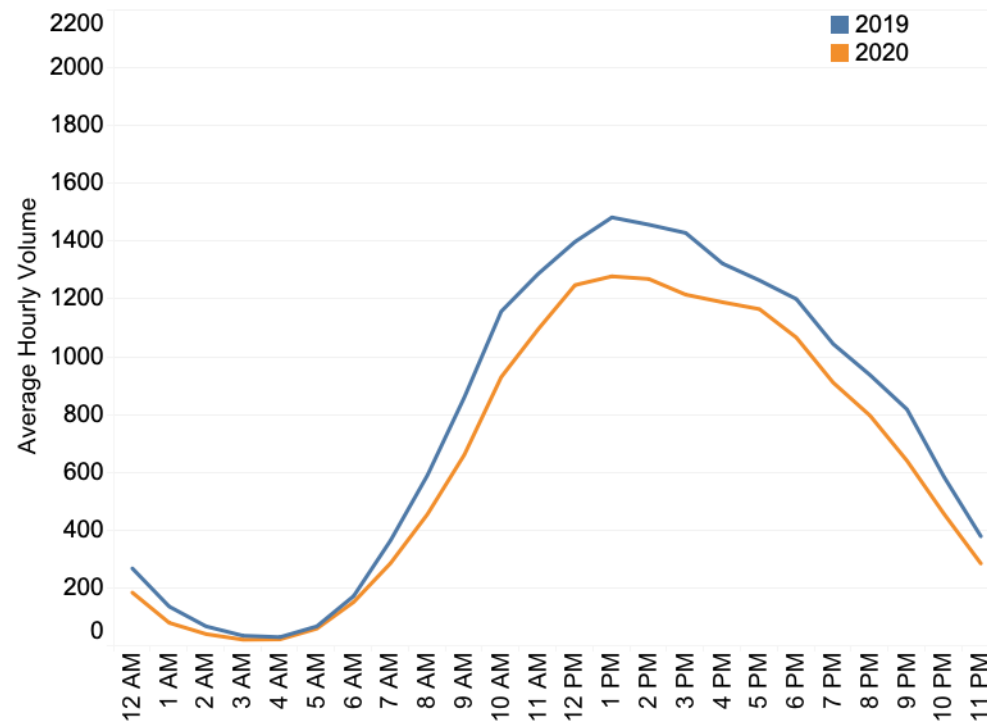


September

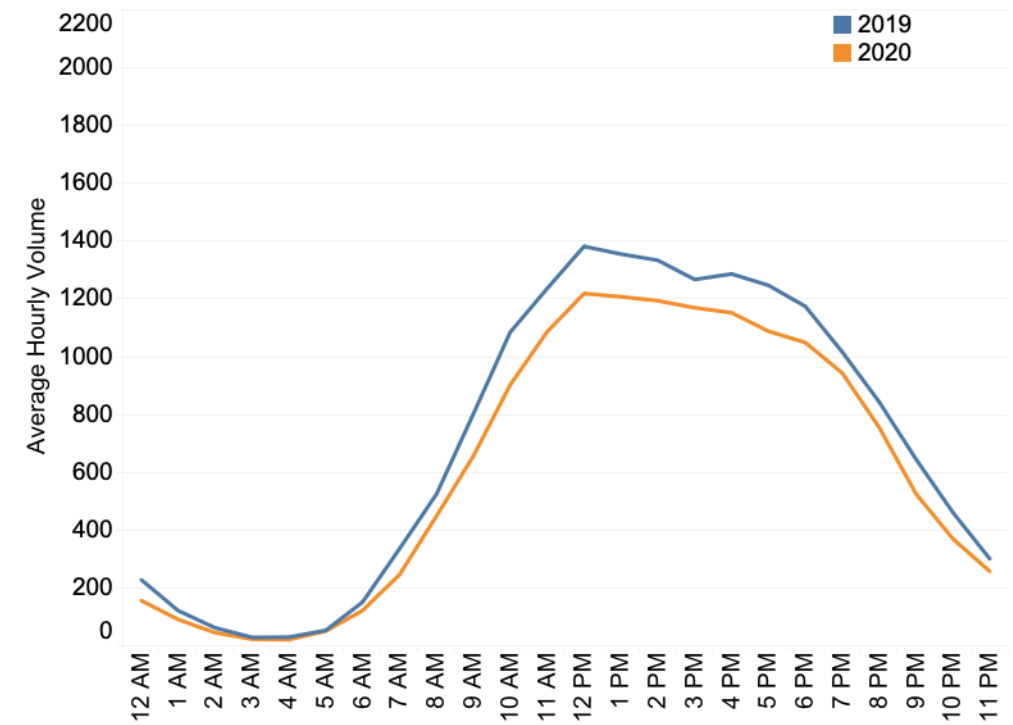


N528 Old Baltimore Pike & Trevett Blvd-Weekend Volumes (Sat/Sun)

June

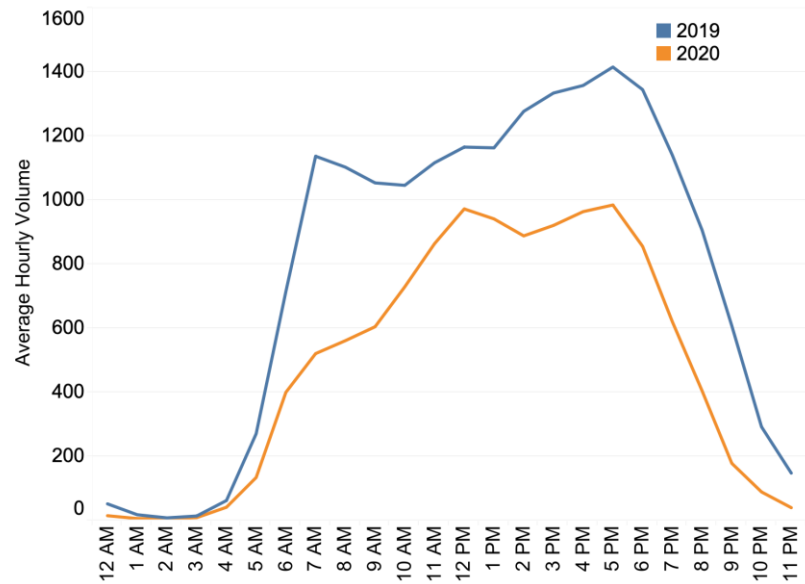


September

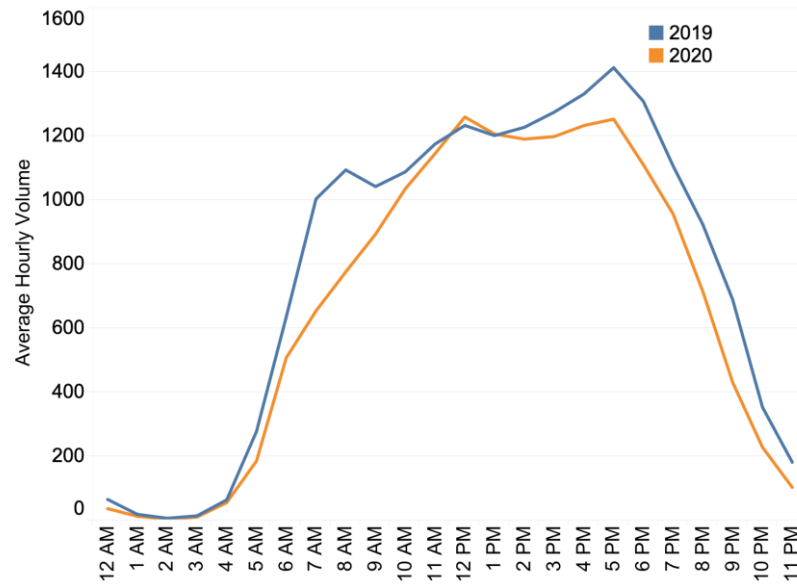


N670T SR 299 & Cleaver Farm Rd (EB/WB)-Weekday Volumes (T/W/Th)

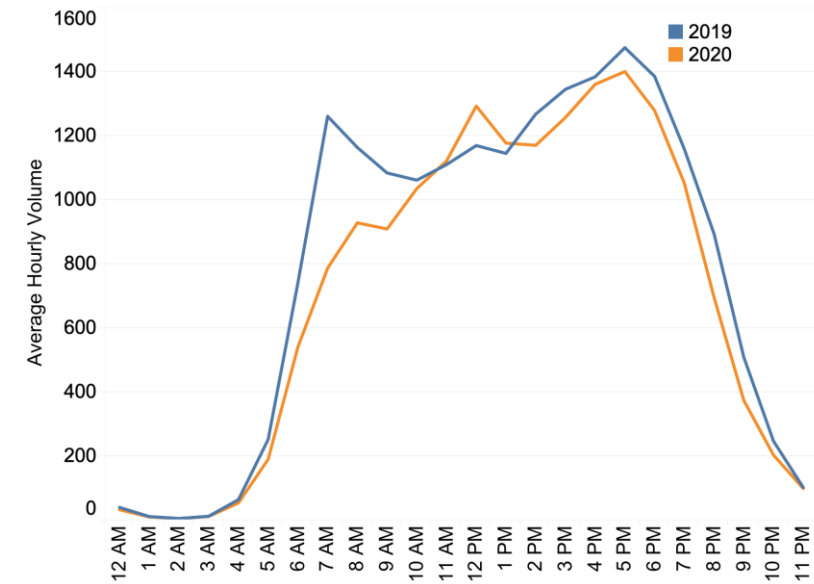
April



June

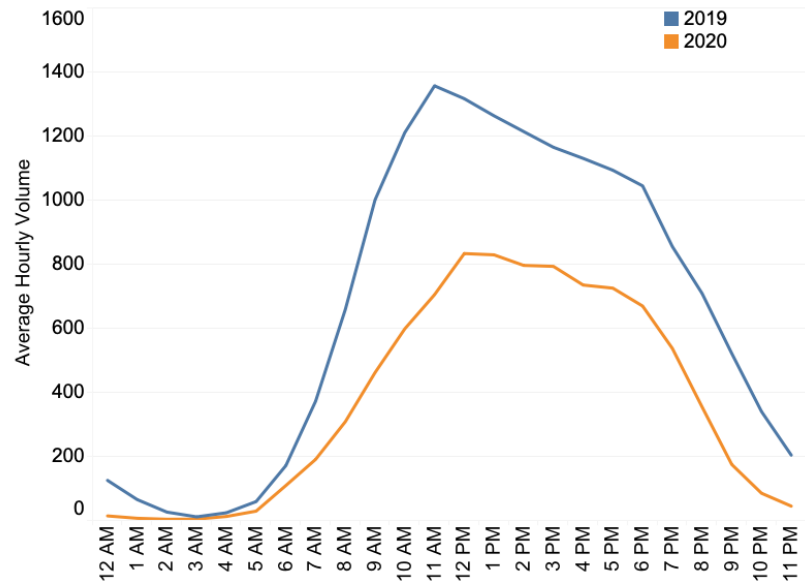


September

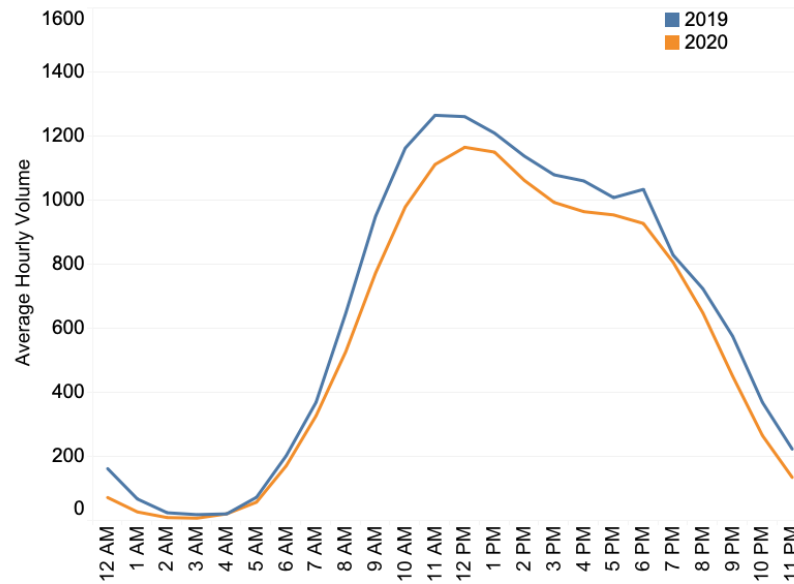


N670T SR 299 & Cleaver Farm Rd (EB/WB)-Weekend Volumes (Sat/Sun)

April



June



September

