

City of New Castle
Transportation Plan
Update
City Council Workshop
November 9, 2021



Response Sheet



City of New Castle Transportation Plan Survey

PURPOSE: We are seeking your thoughts on transportation in your area. The City of New Castle and the Wilmington Area Planning Council would like your feedback on draft concepts for transportation in New Castle.

1. On a scale from 1 to 5, how would you rate the draft concepts with 1 being most disliked and 5 being most favored?

DRAFT CONCEPT	Strongly oppose	1	2	3	4	Strongly support
A. Reduce speed limits	1	2	3	4	5	
B. US 13 / SR 273 DelDOT Feasibility Study	1	2	3	4	5	
C. SR 141/SR 273 - Concept 1 - Free Right Turn	1	2	3	4	5	
D. SR 141/SR 273 - Concept 2 - Signal Controlled Right Turns	1	2	3	4	5	
E. SR 141/SR 273 - Concept 3 - Protected Intersection	1	2	3	4	5	
F. Ferry Cutoff/Delaware - Concept 1 - Existing Condition w/ Path	1	2	3	4	5	
G. Ferry Cutoff/Delaware - Concept 2- Gateway	1	2	3	4	5	
H. Ferry Cutoff/ E. 6th - Concept 2 - Separated Roads	1	2	3	4	5	
I. Ferry Cutoff/ E. 6th - Concept 2 - Dutch Left	1	2	3	4	5	
J. W. 7th/Washington - Concept 1 - Signing	1	2	3	4	5	
K. W. 7th/Washington - Concept 2 - Sweep	1	2	3	4	5	
L. Expand Nonmotorized Network	1	2	3	4	5	
M. Parking Expansion near 2nd and Chestnut	1	2	3	4	5	
N. Parking Expansion near 3rd and Chestnut	1	2	3	4	5	
O. Flood Mitigation	1	2	3	4	5	
P. Gateway Improvements	1	2	3	4	5	

2. Which of the draft concepts do you like the best and why?

3. Which of the draft concepts do you like the least and why?

4. What is the City of New Castle's single greatest transportation need?

5. Please provide us with any comments that will assist us in developing the City of New Castle Transportation Plan.

6. Which of the following bests describes you? (check all that apply):

- ☐ I LIVE in the City of New Castle
- ☐ I WORK in the City of New Castle
- ☐ I SHOP in the City of New Castle
- ☐ I SPEND LEISURE TIME in the City of New Castle (visit parks, events, places of worship, etc.)

Contact Information

Keep me involved:

- ☐ Add me to the WILMAPCO Newsletter email list
- ☐ Keep me informed about public meetings for the Transportation Plan

Name: _____ E-mail: _____

Thank you for your participation!

Please email to hdunigan@wilmapco.org, fax to (302) 286-7131
or mail to WILMAPCO, 100 Discovery Blvd, Suite 800, Newark, DE 19713.
Call 302-737-6205 ext. 118 or email hdunigan@wilmapco.org if you have any questions.
Visit www.wilmapco.org/cityofnewcastle to learn more.

SURVEY CONTINUES ON OTHER SIDE

The purposes of this Plan are to:

Improve multimodal network/ connectivity to communities & trails

Enhance health and livability

Reduce illegal truck traffic

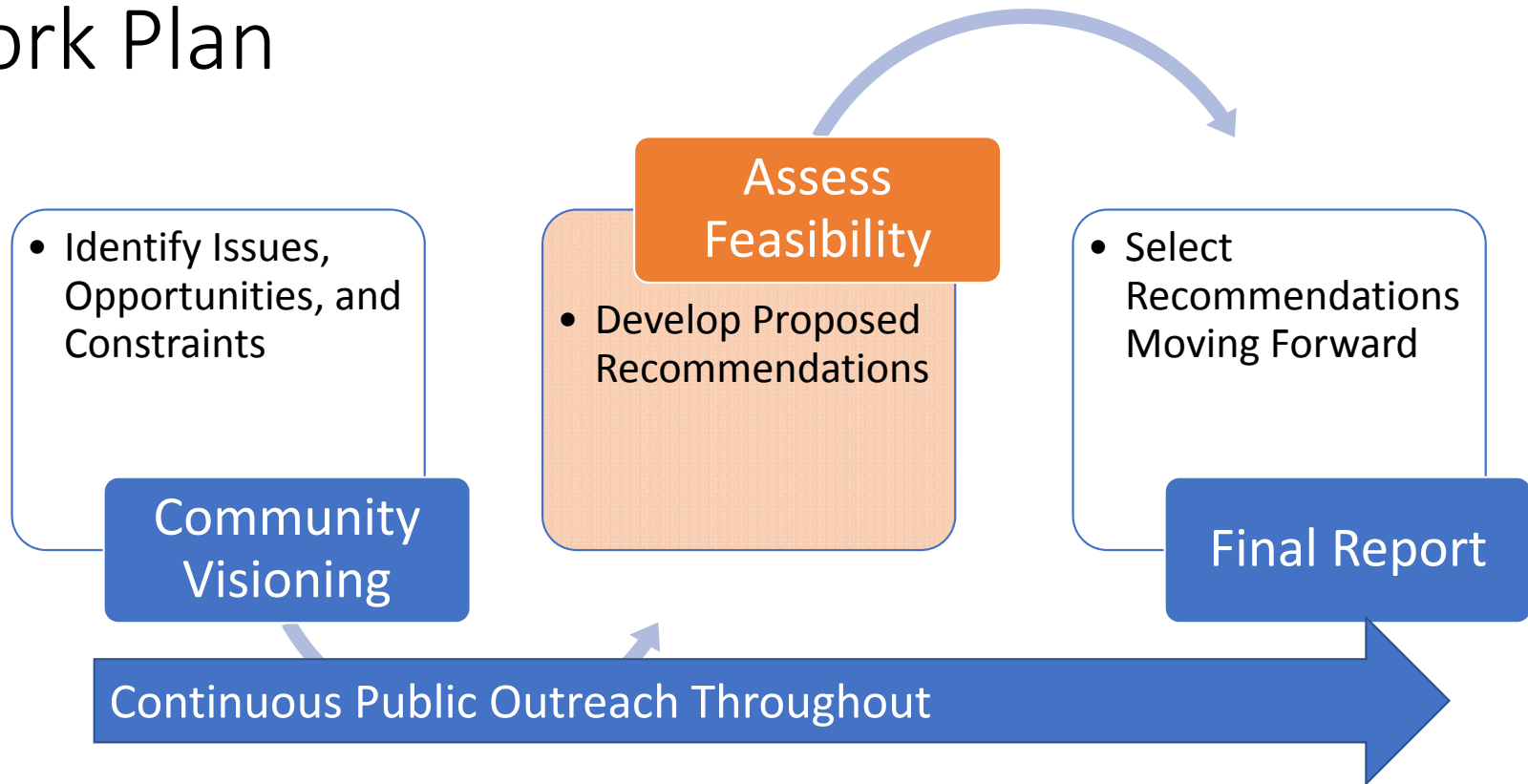
Improve safety

Address flooding and sea-level rise impacts

Improve gateways to the historic city

Develop a shared-parking analysis

Work Plan



Public Involvement

Planning Partners

- WILMAPCO
- City of New Castle
- DelDOT / DART
- Assisted by Century Engineering

Advisory Committee

- Local organization reps
- Other state / county reps
- Gives ongoing input on outreach and recommendations

Public

- **Broad participation needed so plan reflects community priorities**

Public Workshops



2/10 Visioning Workshop



Online Wikimap



7/28 Pop-up Kiosk



9/13 Alternatives Presentation



11/9 City Council Workshop



Alternatives Moving Forward (TBD)

Public Comments

Public Workshop February 10, 2021

Bicycle/Pedestrian

- Ferry Cut Off Street / Chestnut Street
- Ferry Cut Off Street / Delaware Street
- 7th Street to Delaware Street (SR 9)
- Delaware Street Between Carrie Downy Elementary and New Castle Jr HS
- Better Connection to William Penn HS
- SR 273 Road Diet
- Extend Battery Park Trail North
- 7th Street to 6th St Crossing at South Street
- SR 9 / W 6th Street
- JAM Crossing SR 273 and South Street
- JAM to Battery Park Trail

Transit

- Extend #15 Bus to Serve US 13 & NC Airport
- Extend #13 Bus to Wilmington Train Station
- More Limited Stop Buses Between New Castle and Wilmington

Public Comments

Public Workshop February 10, 2021

Traffic

- Keep Through Traffic on Ferry Cut Off Street
- Cut Through Traffic at 6th St / Ferry Cut Off Street
- Market St Traffic Flow Direction
- Jog at 3rd Street and Delaware St is Dangerous
- 3rd Street Major Cut Through Especially when US 13 Backed Up
- Enforcement of One-Way Condition on Harmony St Between 3rd – 5th Streets
- Enforcement of One-Way Condition on Cherry St near 6th Street

Freight

- Large Trucks on 2nd Street
- Trucks from Carroll Drive/Printpack Industrial Cut Through Dobbinsville to Washington Street
- Re-Route Trucks Using SR 9 to Washington Street
- Truck Bypass in Basin Road Area
- Speeding on Residential Streets, Especially Small Trucks
- Norfolk Southern Trains Cause Noise/Vibration Problems

Public Comments

Public Workshop February 10, 2021

Environment & Flooding

- Preserve Historic Layout of City
- Flooding on SR 9 South of Dobbinsville and Near Refinery
- Army Corps Bridge Flooding
- Flooding on 7th St Going South
- SR 273/SR 9 Floods out on South Side of Intersection
- Vehicles go Around Barriers on SR 9 South of Dobbinsville and get Stuck on Flooded Rd
- More Tree Lined Streets
- Continue/Extend City Tree Program Started on Delaware St

Streetscape

- Better Signage for Parking for Historic District/Local Parking
- Existing Ferry Cut Off Street Gateway Needs to be Improved
- New Gateway Ferry Cut Off Street/6th Street
- New Gateway End of Delaware Street
- New Gateway at Frenchtown Rd (SR 273)
- Identify Funding Sources for City Wayfinding and Gateway Study

Parking

- New Parking Lot Behind Delaware Street Close to Battery Park
- Competition for Parking Between Places of Interest and Residences
- Cherry Street Between 6th Street and Ferry Cut Off Street Needs Parking
- Parking Lots on 3rd and 5th Streets Trimmed from 100 to 32 Spaces – Need More
- Electric Vehicle Charging Stations - Former ASPCA Parking Lot on South Street
- Improvements Should Focus on Electric Vehicles

Tell us your transportation ideas for the City of New Castle

Wednesday, July 28
(rain date August 4)
Drop by from 6 - 8 p.m.
Battery Park near Delaware St



Public Comments

Pop-Workshop Battery Park July 28, 2021

- Too Much Traffic / Truck Traffic on 6th Street – GPS Directs You This Way
- Trucks Should Use Washington Street
- Beach Traffic on 6th Street - Fridays SB, Sundays NB
- No One Stops at 6th & Harmony Streets
- Do Not Do RR Crossing Work Until I 95 Work is Finished
- SR 273 should be Four Lanes Whole Way
- In Front of Farmer's Market at SR 273 Light Make Turn Lane Longer – There is Room
- Speeding on 6th Street
- Uneven Sidewalks
- Battery Park Trail Just Ends
- JAM Trail Ends at Road
- More Parking by Delaware Street Section of SW Crossing at 3rd & Harmony Streets
- Add Street Lighting
- Truck Speeding on Washington Street
- Not Enough Signage
- Cars & Truck Speeding
- Rental Bikes & Bike Racks
- Need Parking on 4th Street

September 13 Public Workshop

Agenda

- Presentation with Poll Questions
- Q & A



City of New Castle Transportation Plan

SHARE YOUR IDEAS

Public Workshop will seek your feedback about potential improvements for walking, bicycling, parking, driving, flooding, and freight.

ONLINE: MONDAY, SEPTEMBER 13, 7 P.M.
IN-PERSON: OCTOBER (DETAILS TBD)

Presented by WILMAPCO, the City of New Castle, and DelDOT

Register for FREE at
www.wilmapco.org/cityofnewcastle
Contact us online or at 302-737-6205 ext 118
with any questions



Reduced Speed Limits



67% Support

Strategic Projects

Areas of Concern: Traffic Congestion, Cut-Through Traffic, Truck Traffic



US 13/SR 273 Intersection

- Identified In DelDOT's Safety Program
- DelDOT Feasibility Study

B



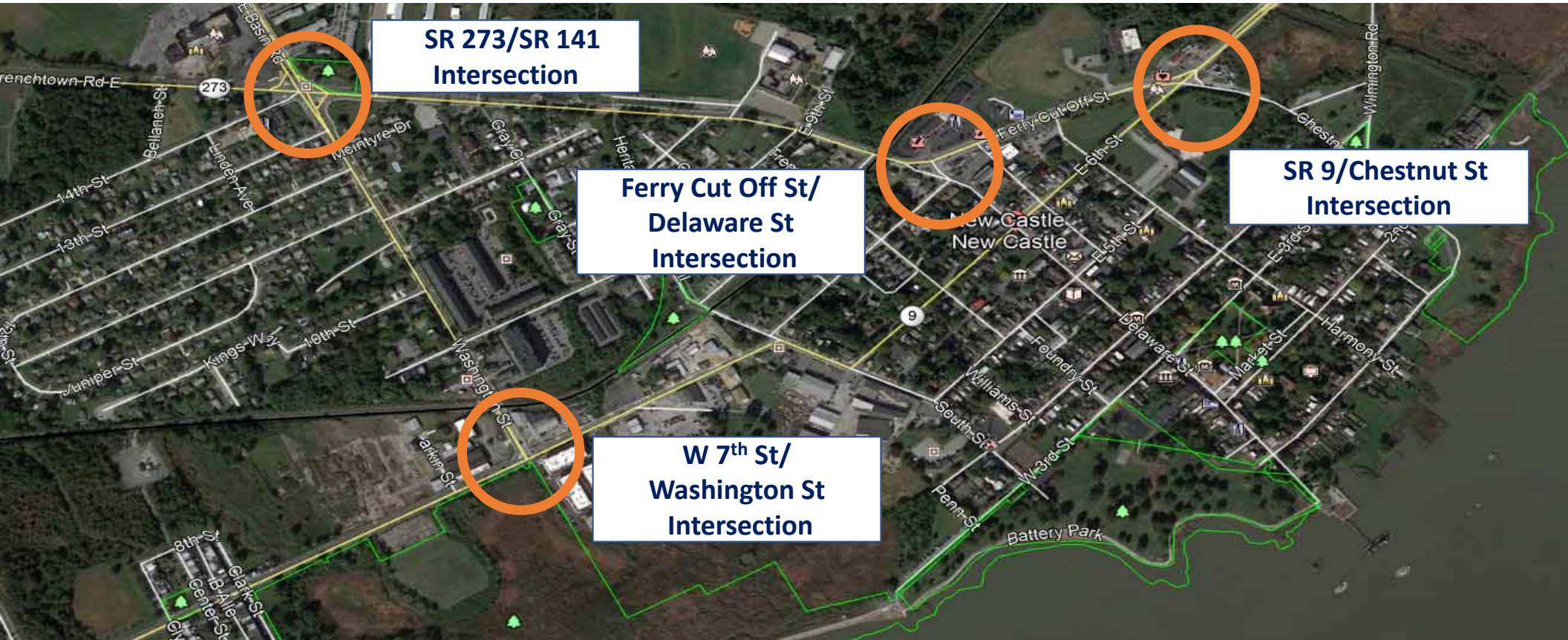
Roadway Capacities

- Frenchtown Road/Delaware Street/Ferry Cut Off Street



Strategic Projects -

Areas of Concern: Traffic Congestion, Cut-Through Traffic, Truck Traffic, Bicycle / Pedestrian Access



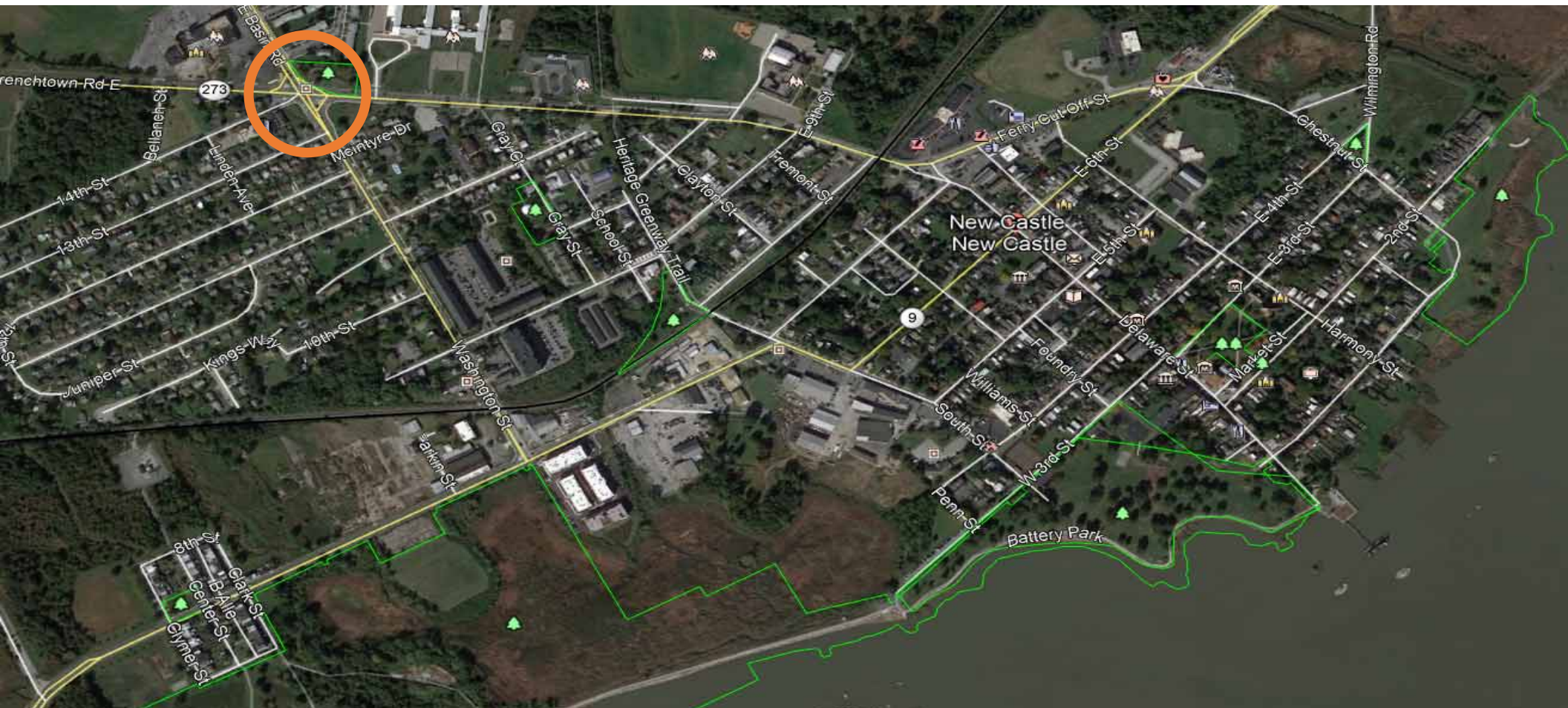
**SR 273/SR 141
Intersection**

**Ferry Cut Off St/
Delaware St
Intersection**

**SR 9/Chestnut St
Intersection**

**W 7th St/
Washington St
Intersection**

SR 273 / SR 141 Intersection



Existing SR 273 / SR 141 Intersection





Concept 2:
Signal Controlled Right Turn



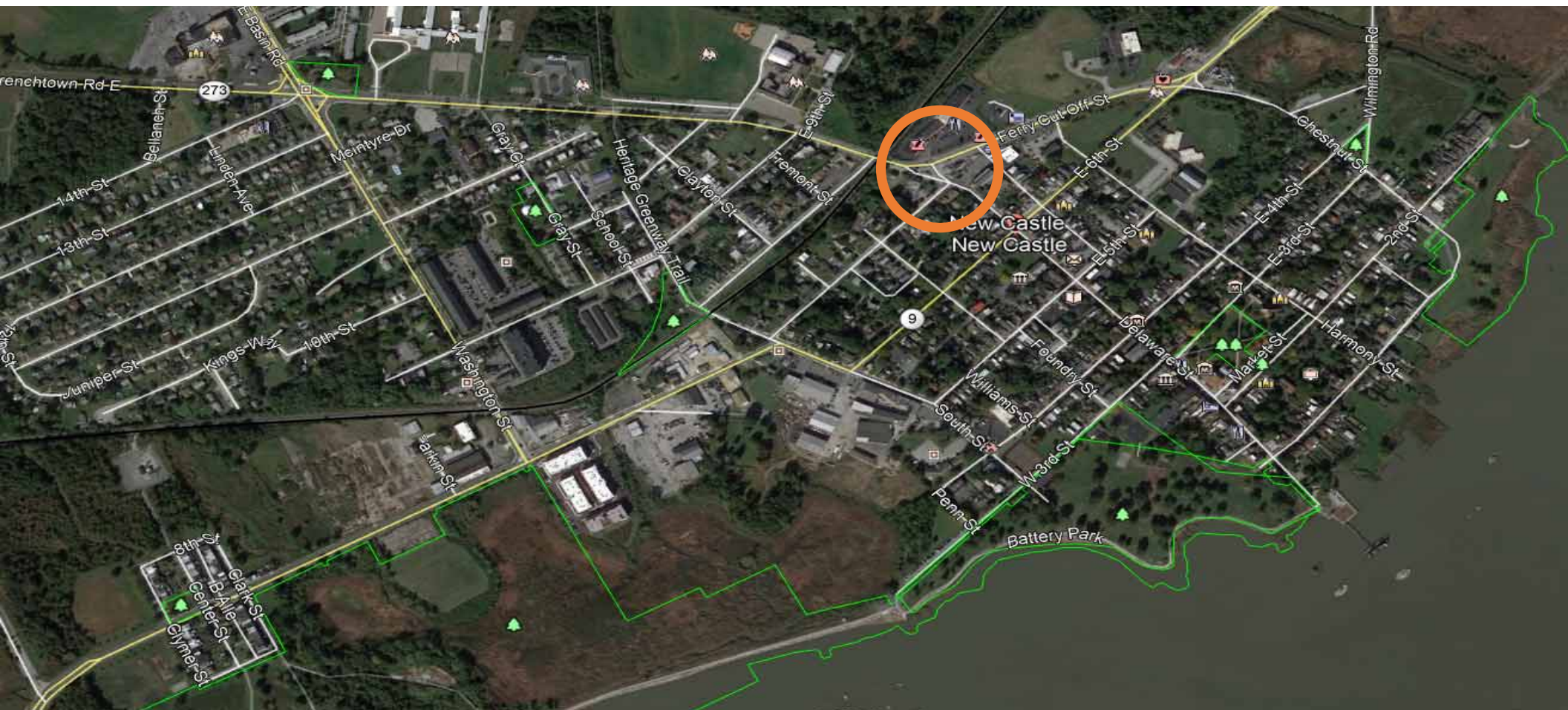
Concept	Percent Support
Concept 1	33%
Concept 2	33%
Both	7%
Neither	22%
Unsure	4%

Concept 3:
Protected Intersection



E

Ferry Cut Off Street / Delaware Street Intersection



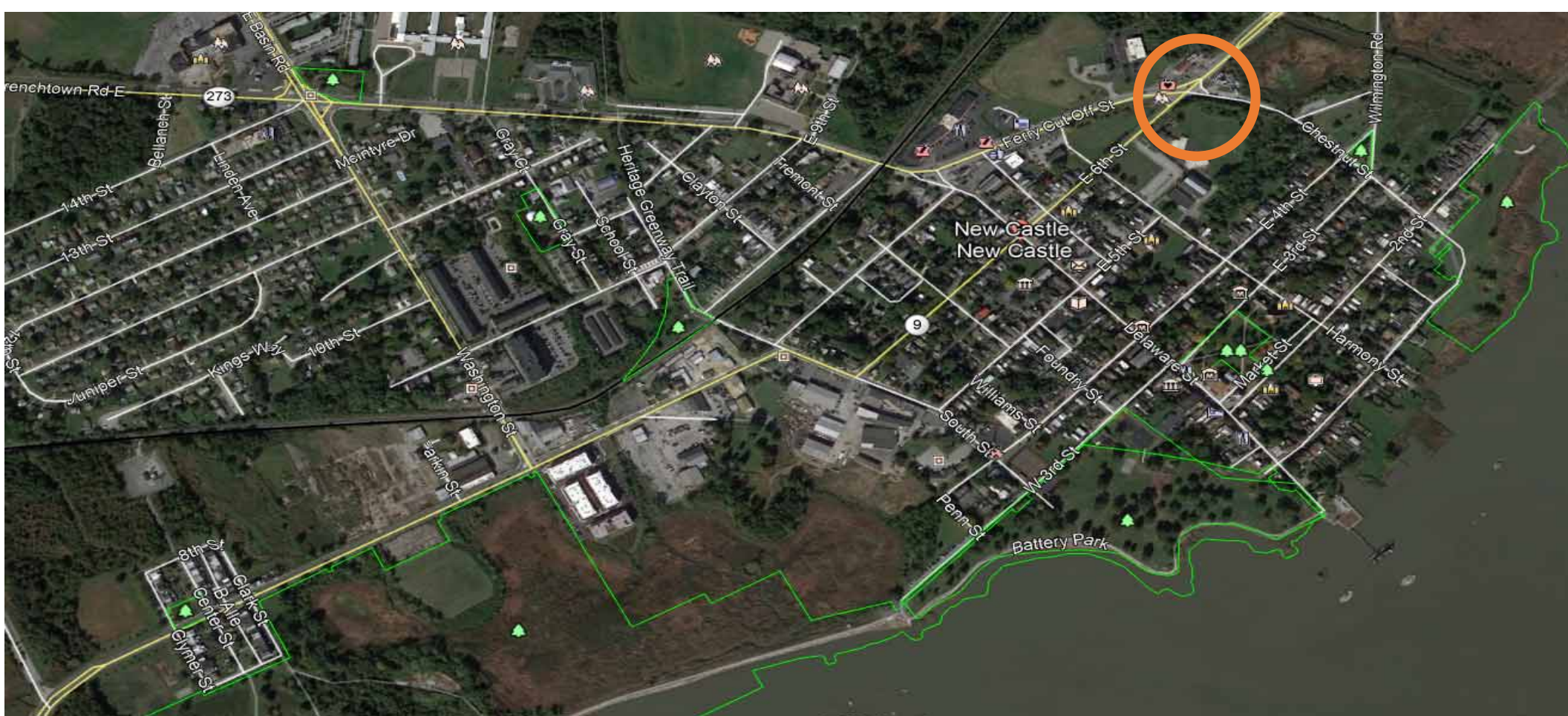
Existing Ferry Cut Off Street / Delaware Street Intersection





Concept	Percent Support
Concept 1	10%
Concept 2	55%
Both	24%
Neither	10%
Unsure	0%

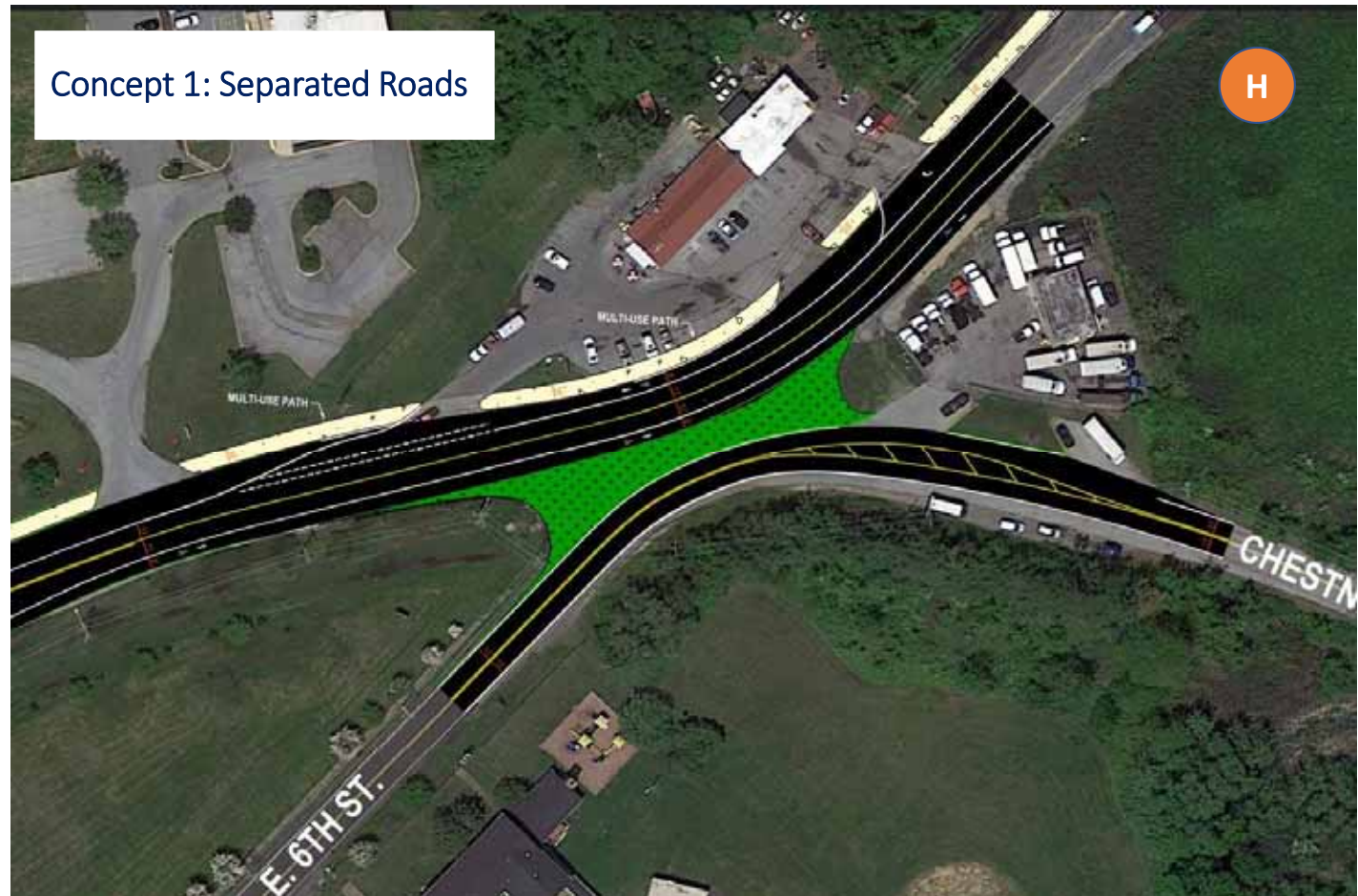
Ferry Cut Off Street / E 6th Street / Chestnut Street Intersection



Existing Ferry Cut Off St/E 6th St/Chestnut St

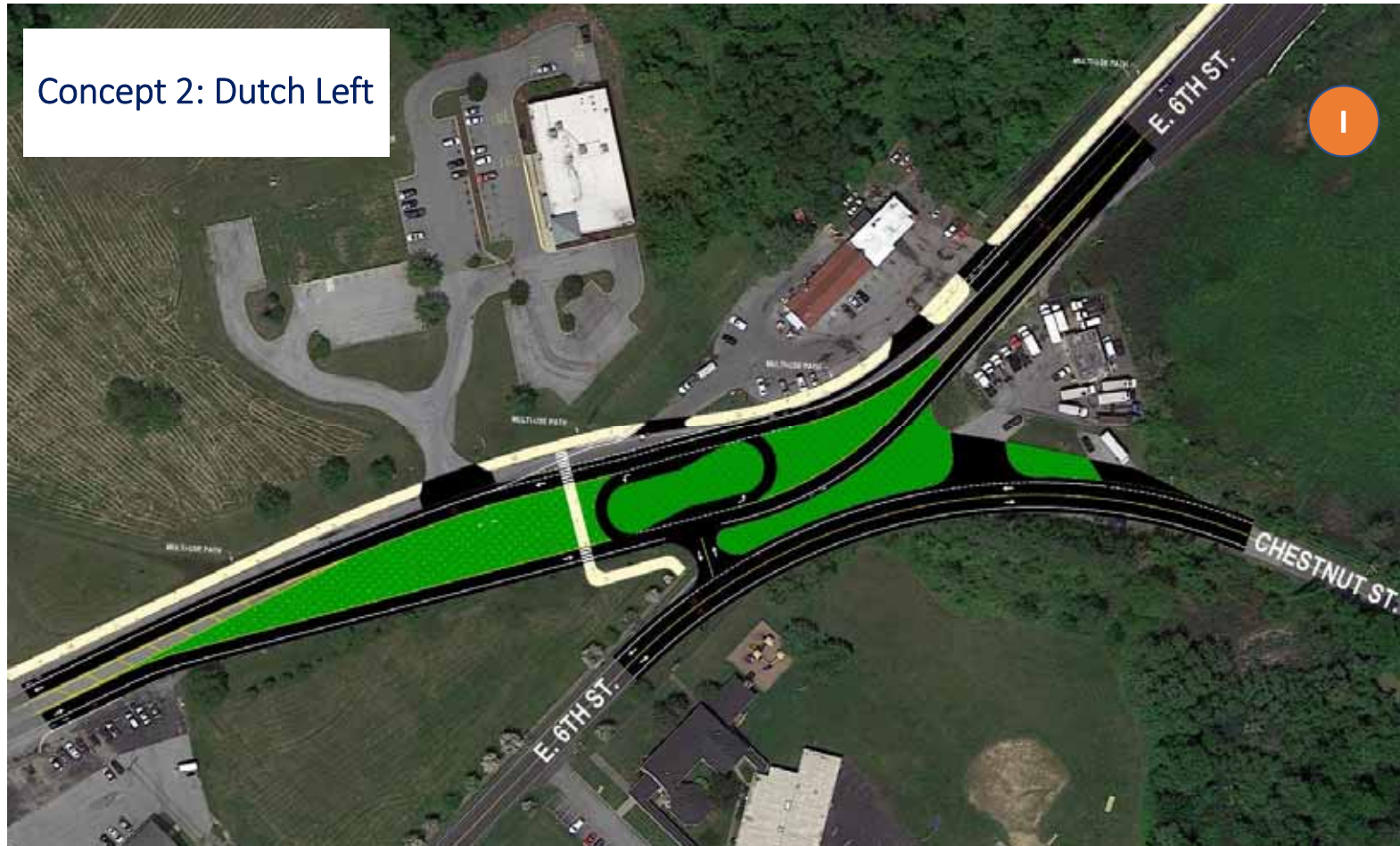


Ferry Cut Off Street / E 6th Street / Chestnut Street Intersection Concept

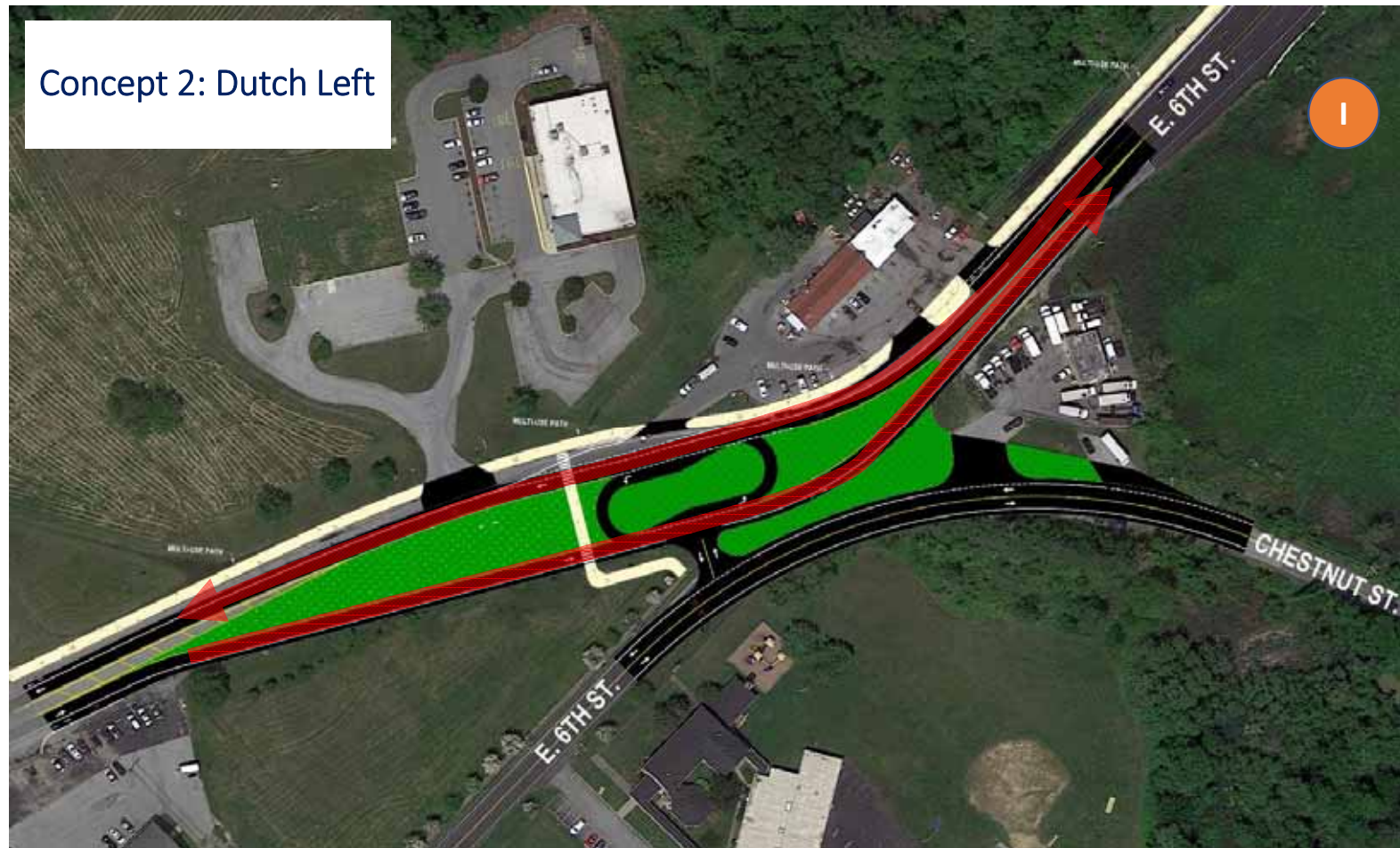


Ferry Cut Off Street / E 6th Street / Chestnut Street Intersection Concept

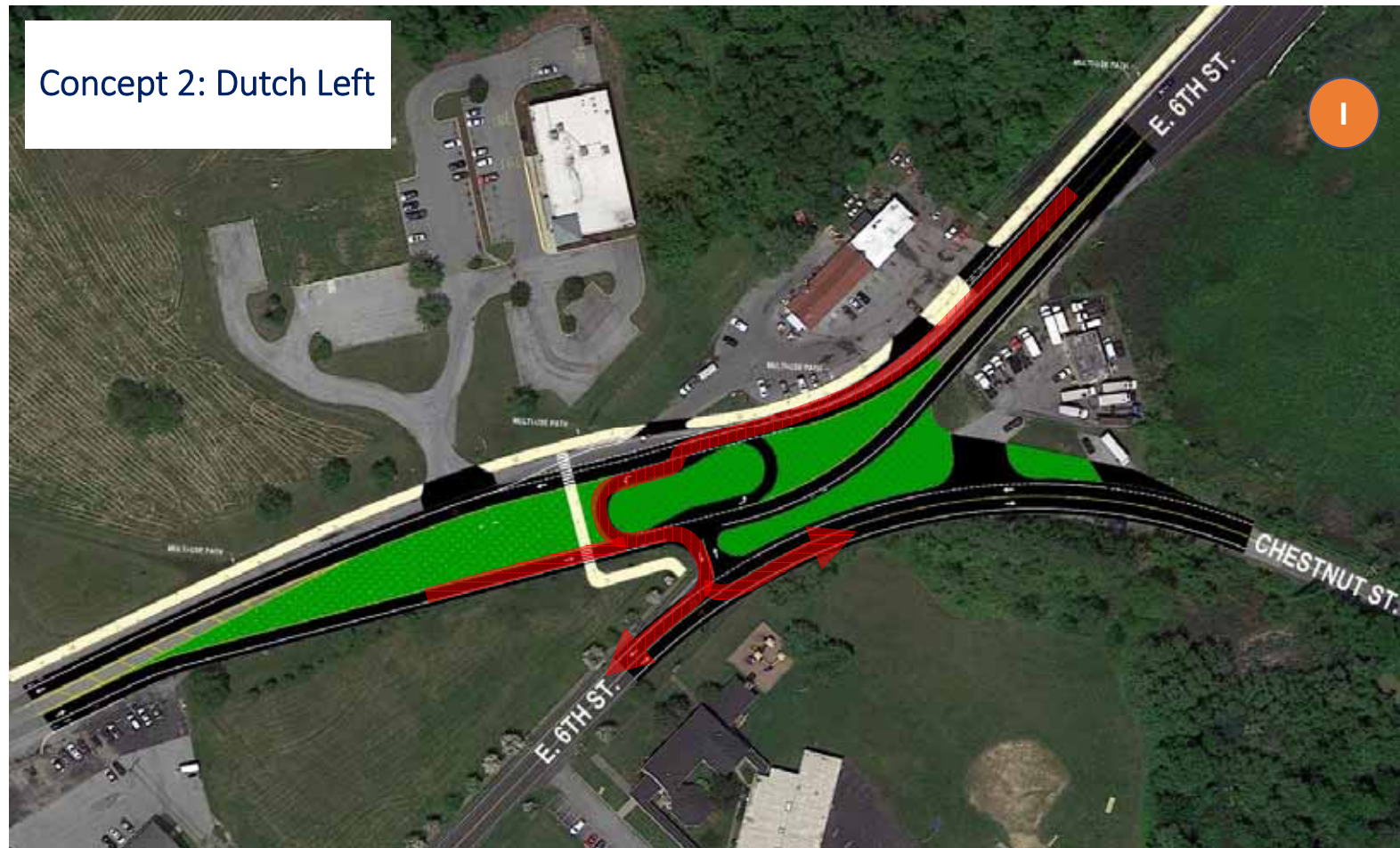
Concept 2: Dutch Left



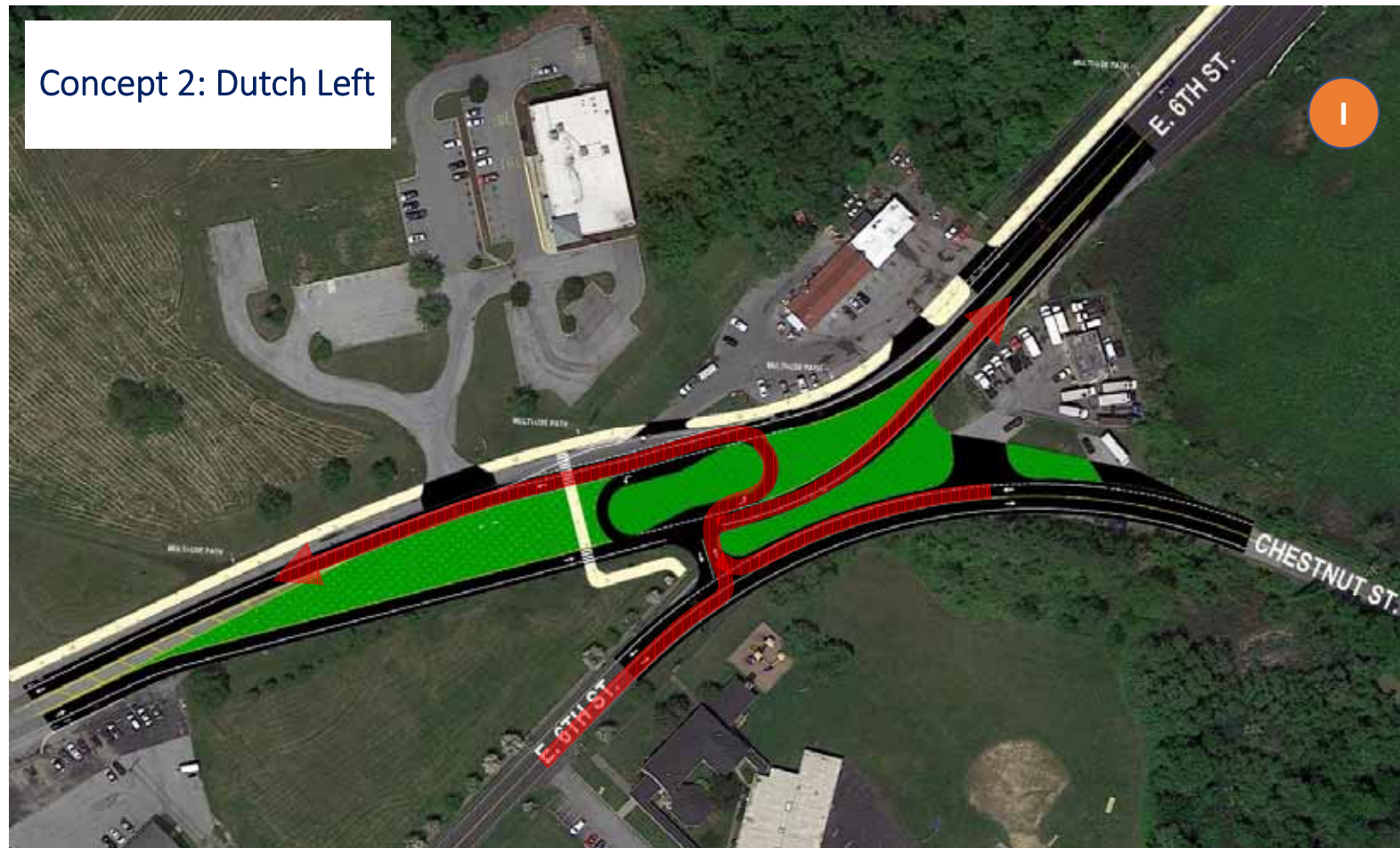
Ferry Cut Off Street / E 6th Street / Chestnut Street Intersection Concept



Ferry Cut Off Street / E 6th Street / Chestnut Street Intersection Concept



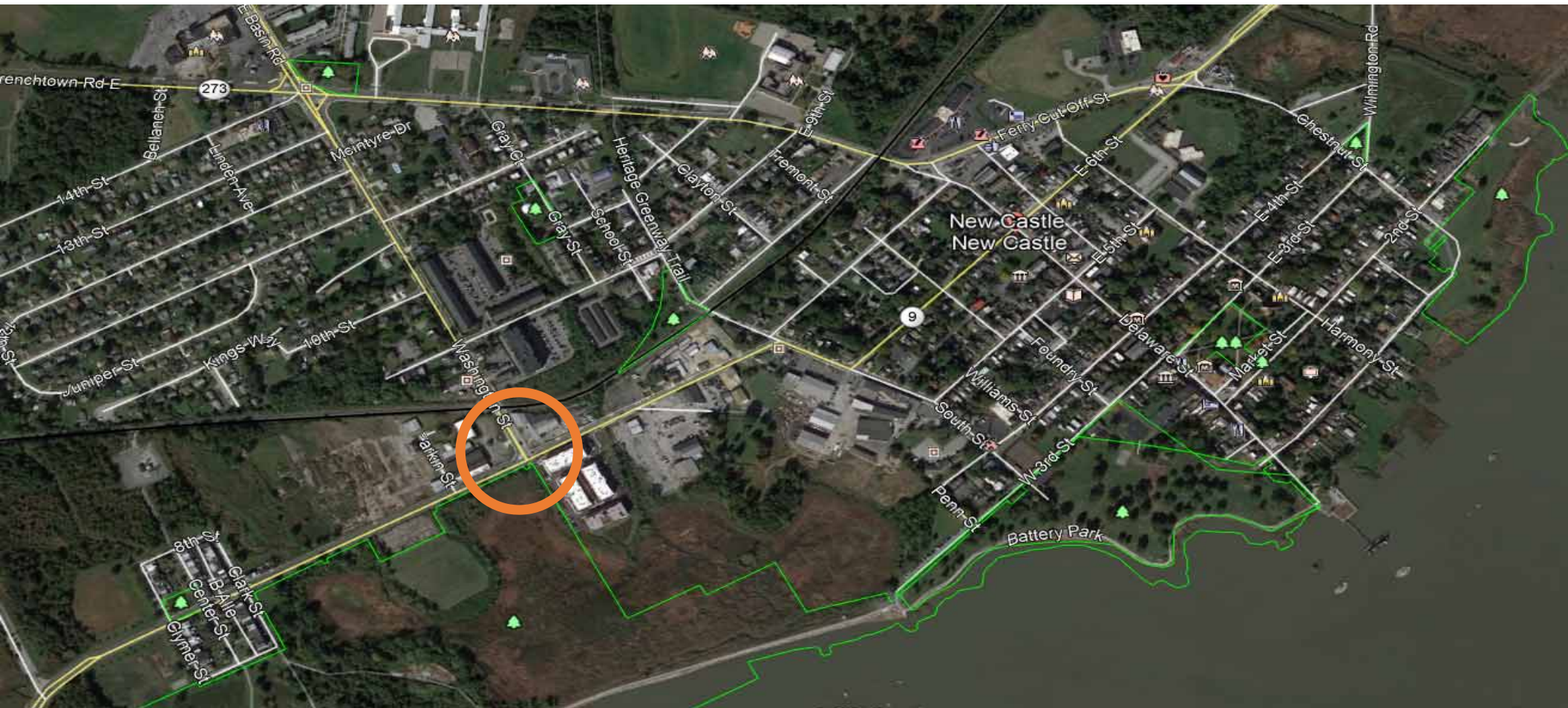
Ferry Cut Off Street / E 6th Street / Chestnut Street Intersection Concept





Concept	Percent Support
Concept 1	25%
Concept 2	54%
Both	14%
Neither	4%
Unsure	4%

W 7th Street / Washington Street Intersection



Existing W 7th Street / Washington Street Intersection





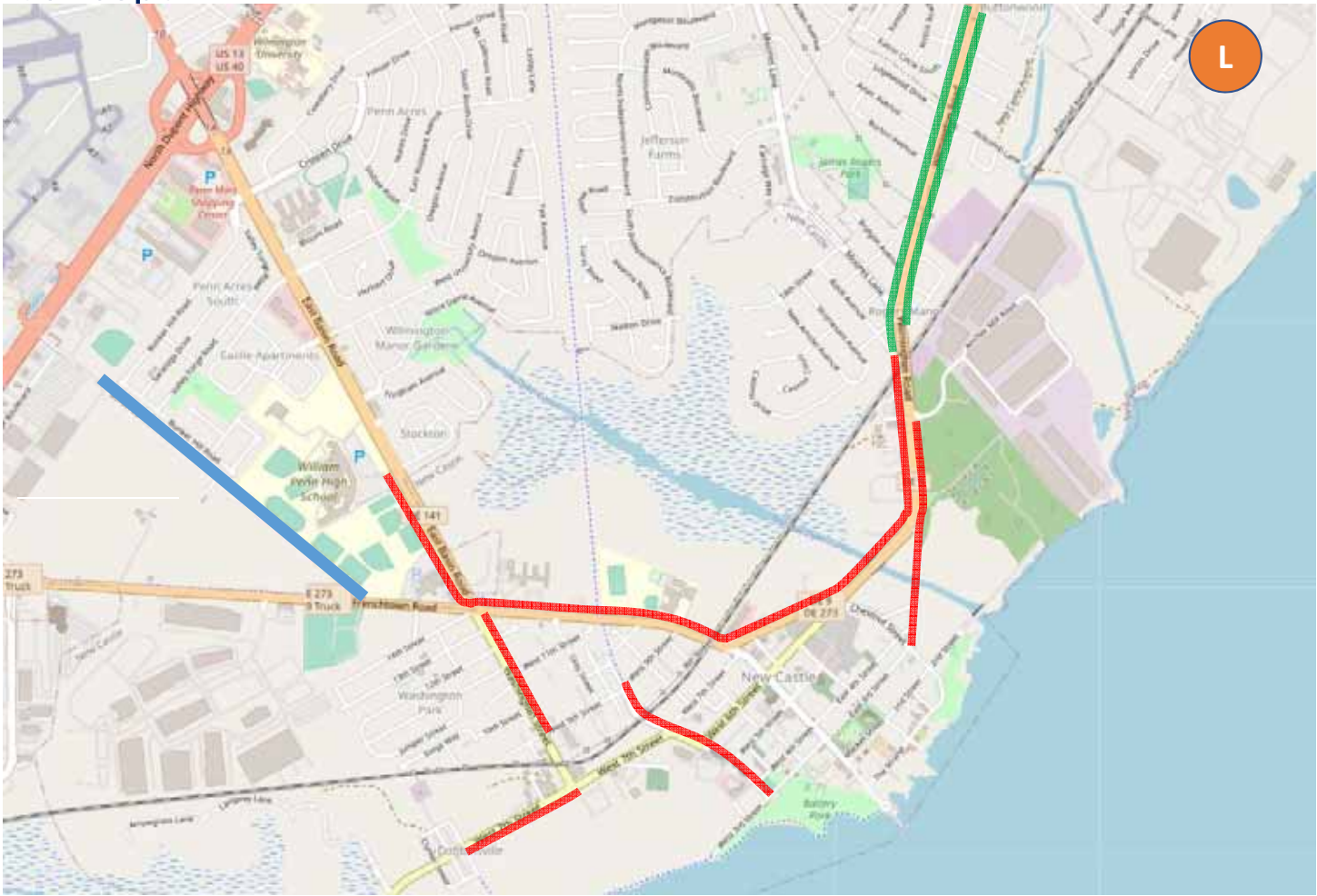
Concept	Percent Support
Concept 1	14%
Concept 2	46%
Both	29%
Neither	4%
Unsure	7%

Nonmotorized Network Concept

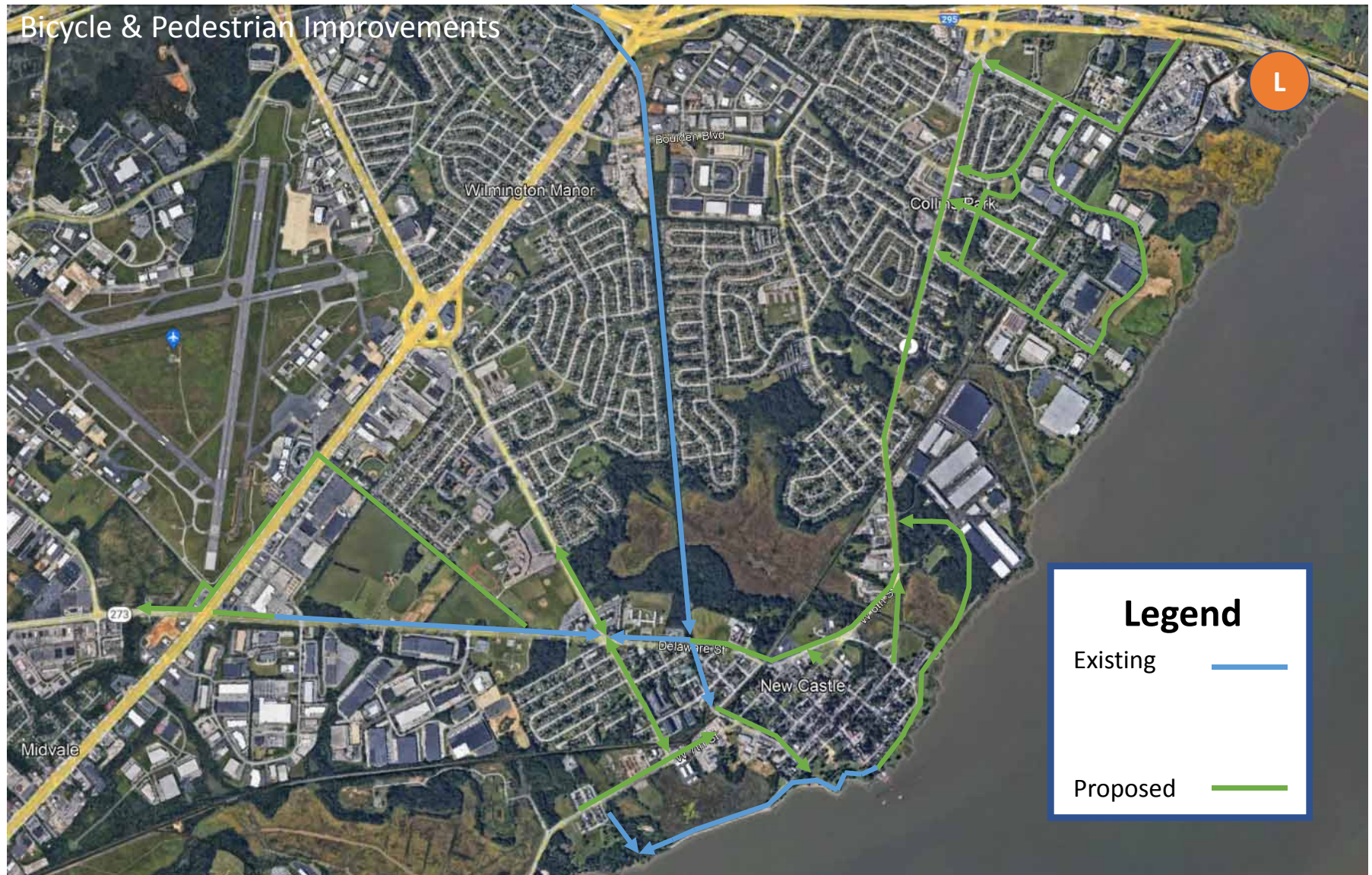
Legend

- Enhanced 10' Multi Use Path —
- Sidewalk Improvements (Filling in the Gaps) —
- School Lane Path Project —

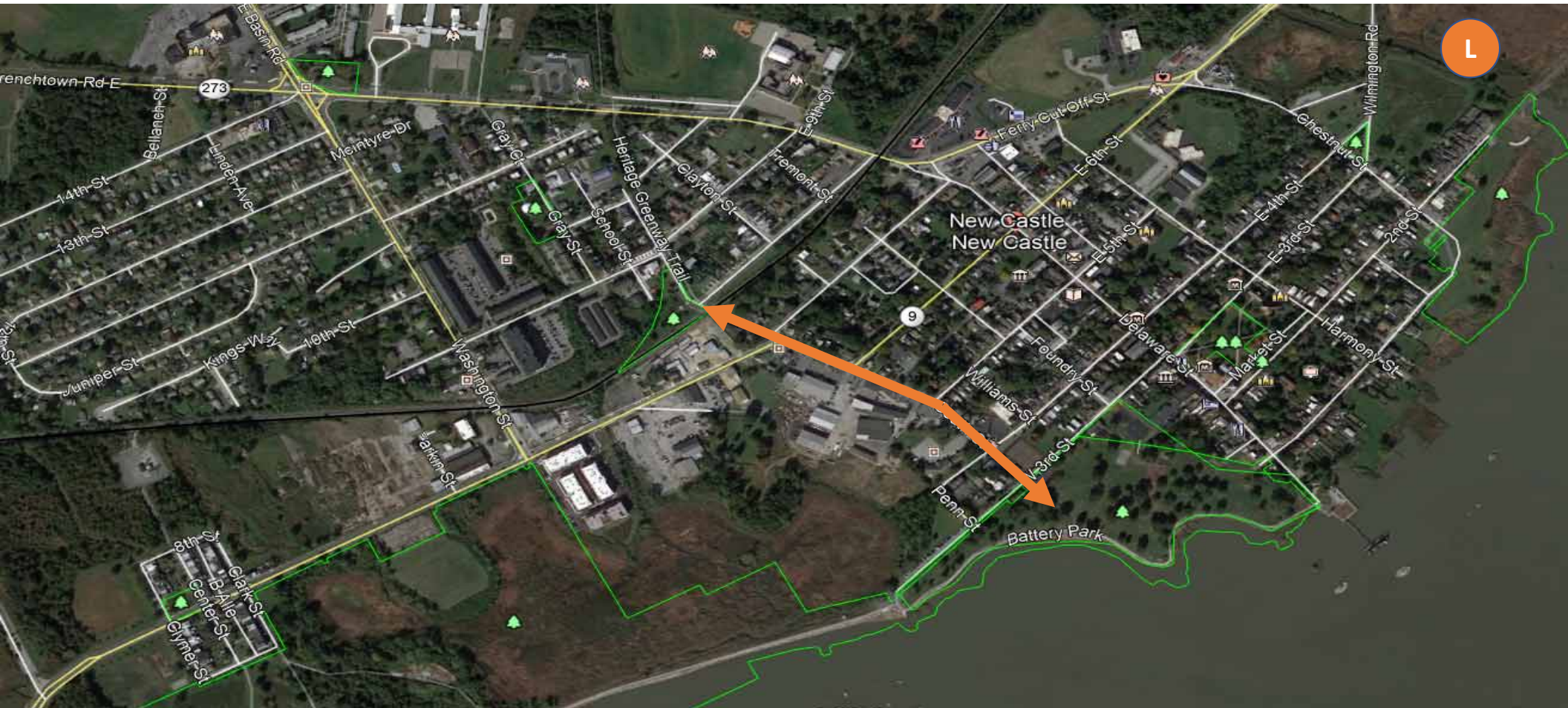
93% support



Bicycle & Pedestrian Improvements



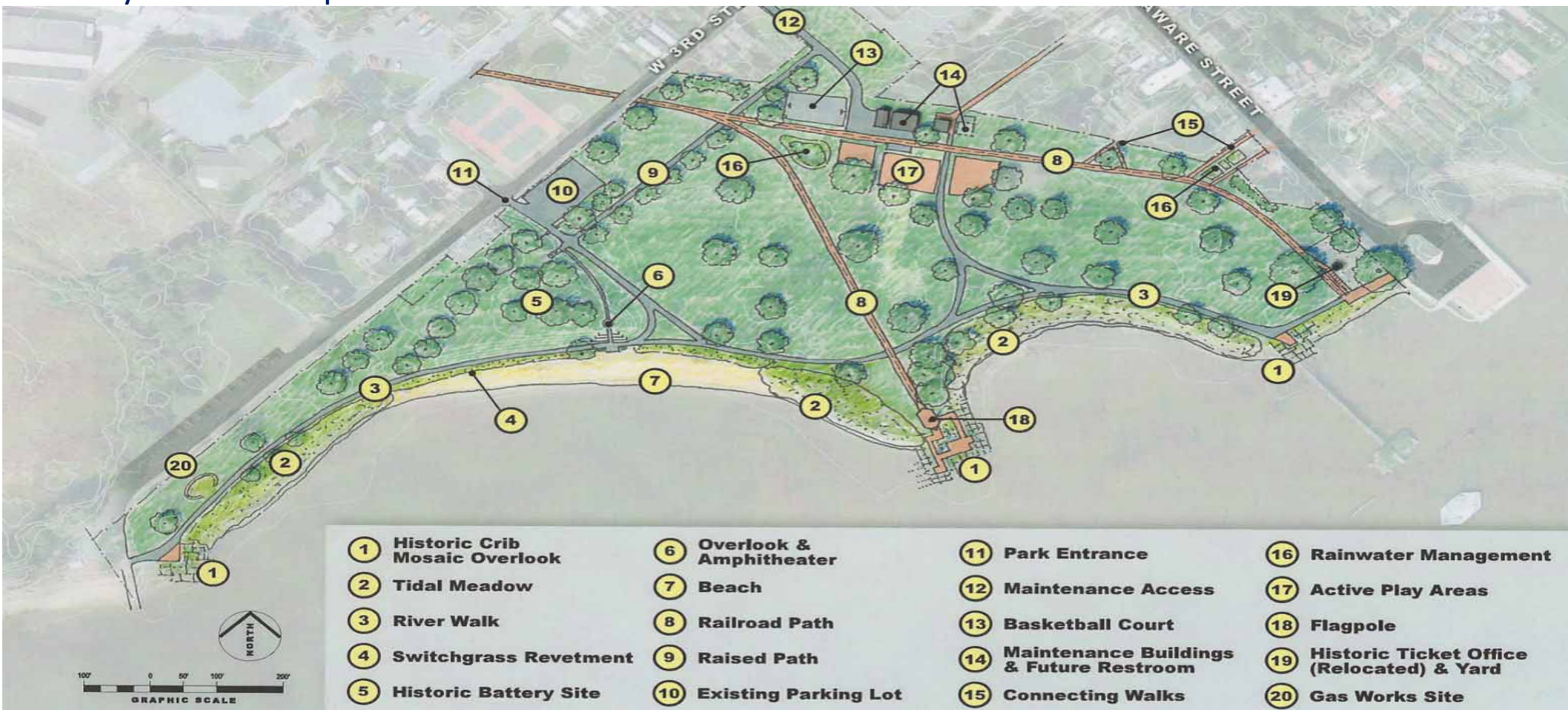
South Street



Existing South Street



Battery Park Concepts



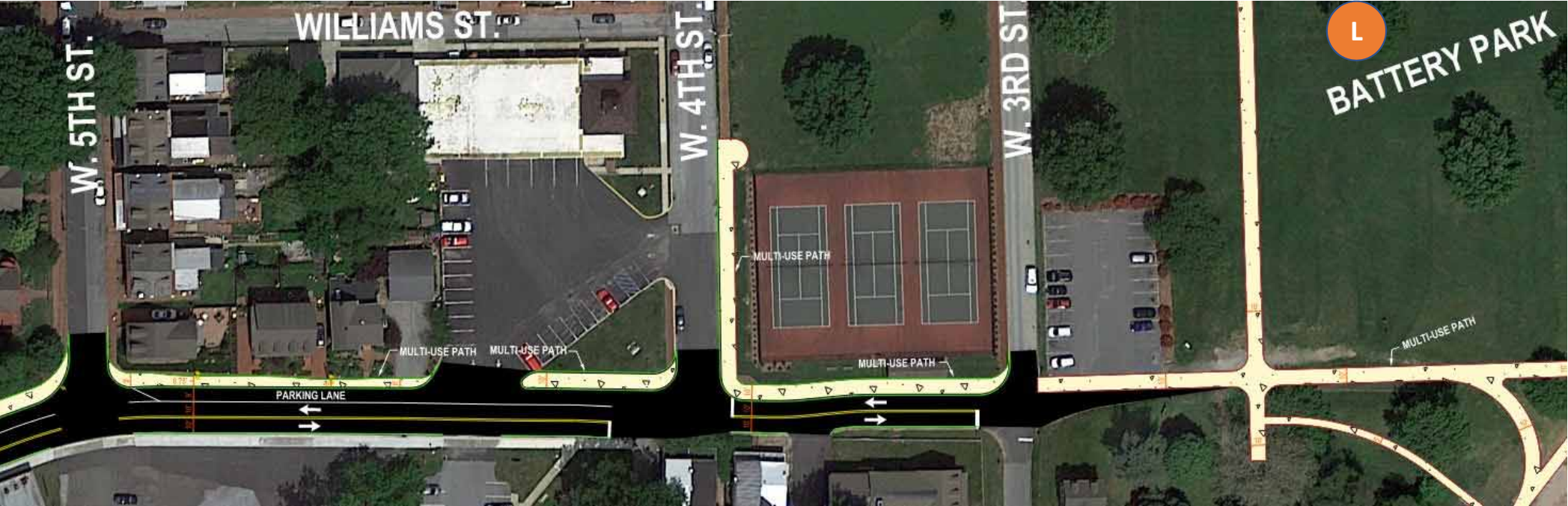
South Street Proposed Concept



South Street Proposed Concept – Between 6th and 7th Streets



South Street Proposed Concept



Existing Cherry Street



Cherry Street Concept



CHESNUT ST. PARKING LOT

GATEWAY
FEATURE

M

Concept	Percent Support
Yes	39%
No	39%
Unsure	22%

PEDS & EMERGENCY
VEHICLES ONLY

PROPOSED PARKING
68 SPACES

LEGEND

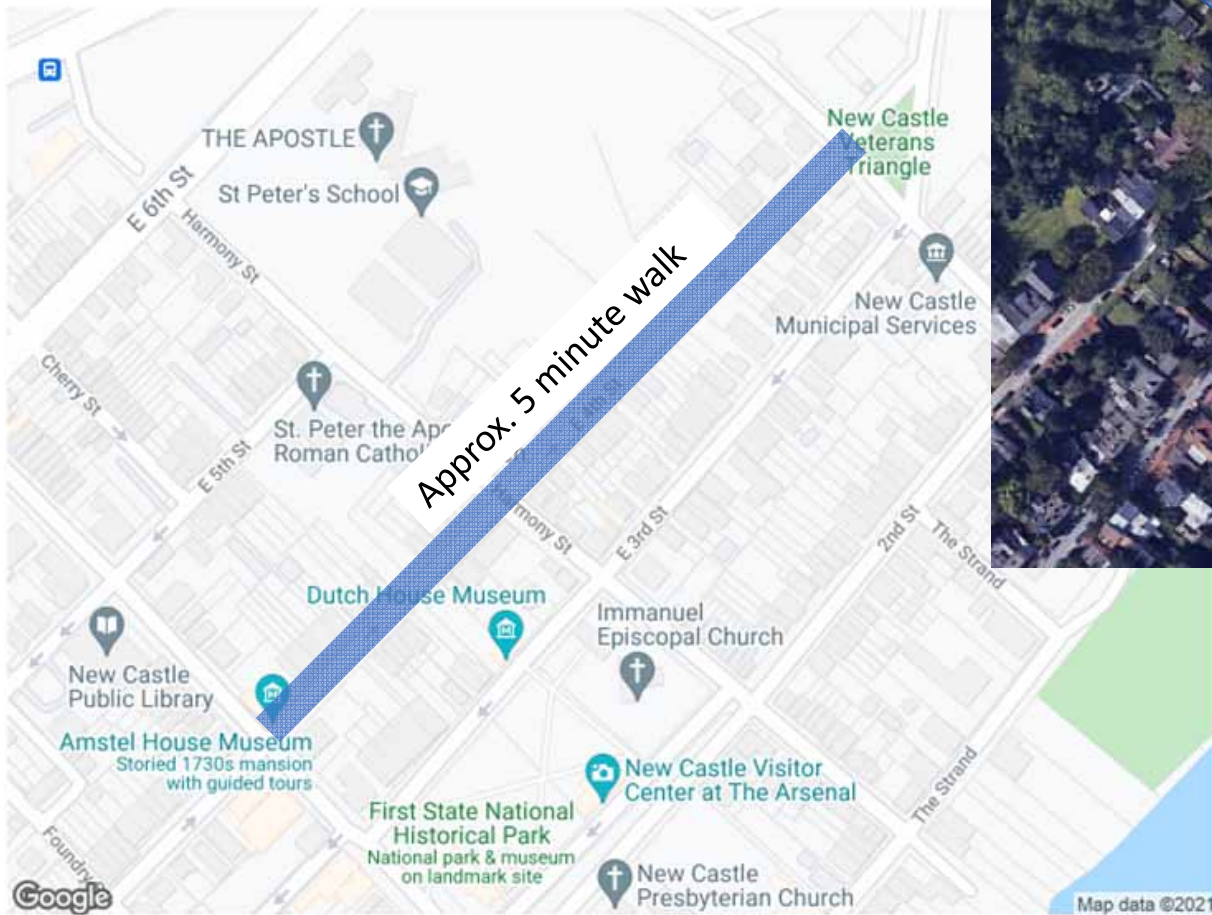
- NEW PAVEMENT
- NEW SIDEWALK
- GRASS
- DIRECTION OF TRAFFIC FLOW



Scale: 1" = 40'

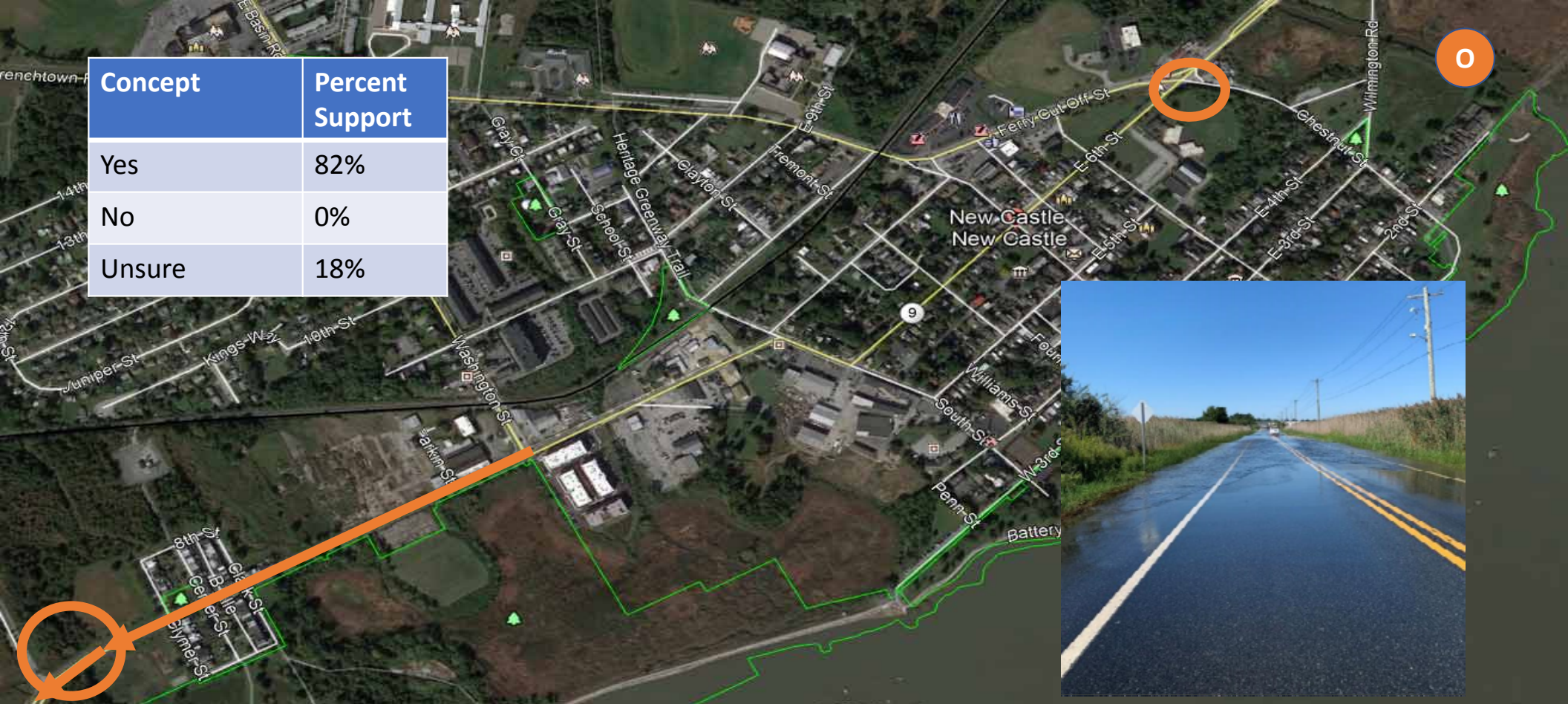
September 2021

Parking



Flooding

Concept	Percent Support
Yes	82%
No	0%
Unsure	18%

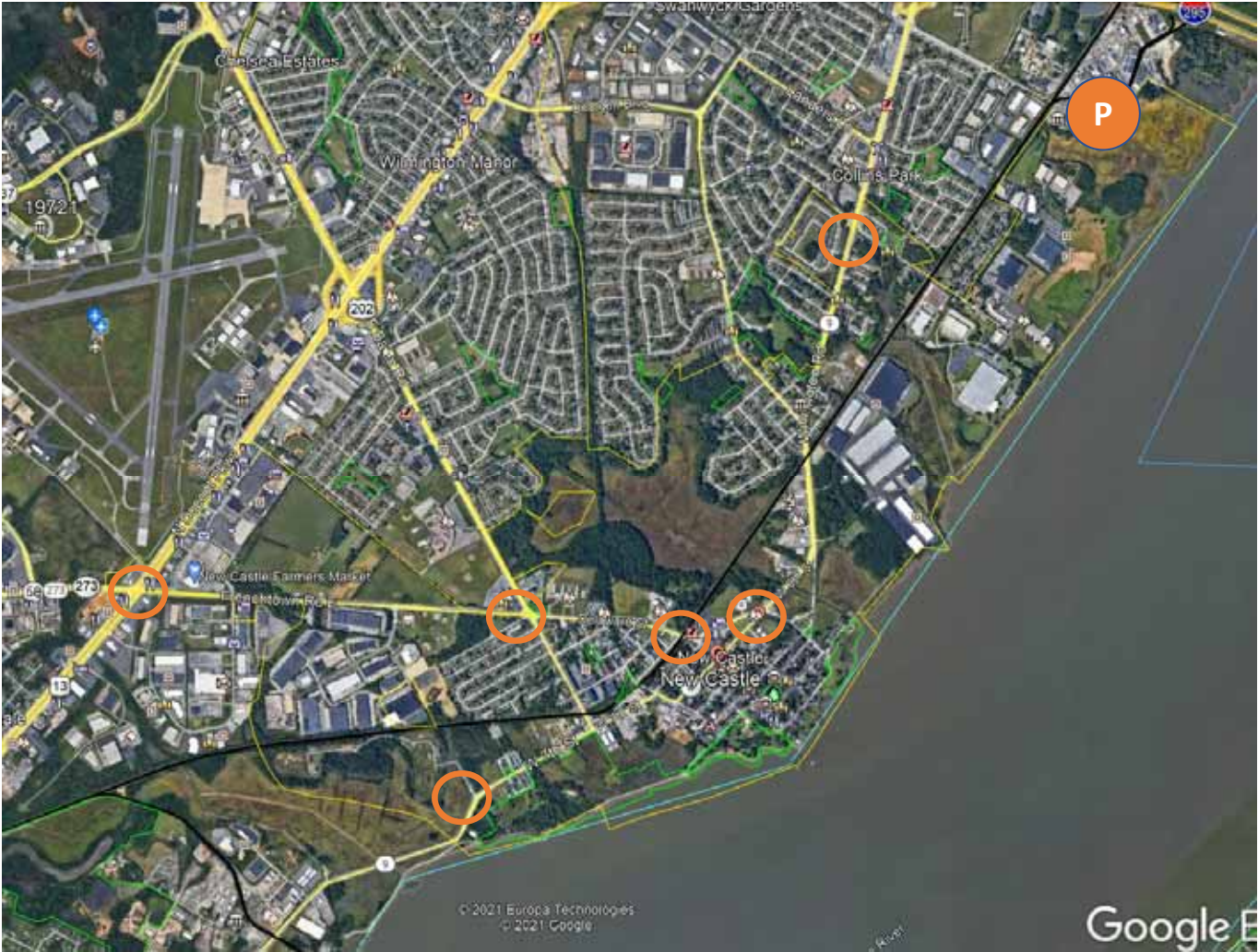


Flooding



Gateway Locations

Concept	Percent Support
Yes	90%
No	5%
Unsure	5%



	Traffic Congestion	Cut-Through Traffic	Truck Traffic	Traffic Calming	Bike/Ped	Parking	Flooding	Gateway
Speed Reductions	○	○	○	●	○			
US 13/SR 273	●	○	○		○			○
SR 273/SR 141	●	○		○	○			○
Ferry Cut Off St/DE St	●	●	○	○	○	○		○
Ferry Cut Off St/Chestnut St	●	●	●	●	○		○	○
W 7 th St/Washington Ave	○	●	●	○			○	

- Primary Purpose
- Secondary Purpose

	Traffic Congestion	Cut-Through Traffic	Truck Traffic	Traffic Calming	Bike/Ped	Parking	Flooding	Gateway
Basin/Delaware/Ferry Cut Off/Wilmington Multimodal				○	●			○
Washington Street Multimodal					●			
South Street				○	●			
Cherry Street				○	●	●		
Chestnut Street Lot	○			○	○	●		○
Dobbinsville Multi Use Path				○	●			

● Primary Purpose

○ Secondary Purpose

Completed Existing Data Collection

Fall 2020

Visioning Workshop

February 10, 2021

Alternatives Development

Spring 2021

Public Workshop #2

Summer 2021

Refine Alternatives/Draft Report

Fall 2021

Council Presentation

November 9, 2021

Final Report

Winter 2022

Next Steps

www.wilmapco.org/cityofnewcastle

Heather Dunigan

302-737-6205 ext 118

hdunigan@wilmapco.org