

New Castle County Bicycle Plan

December 5, 2017



Schedule

Community and agency outreach and involvement

Project
initiation
and review
of existing
conditions

- July-October 2017

Goals and
objectives

- September –
November 2017

Recommended
bicycle
network,
programs and
policies

- November 2017-
April 2018

Prioritization,
funding and
implementation

- April-May 2018

Identify
performance
measures

- May - June 2018

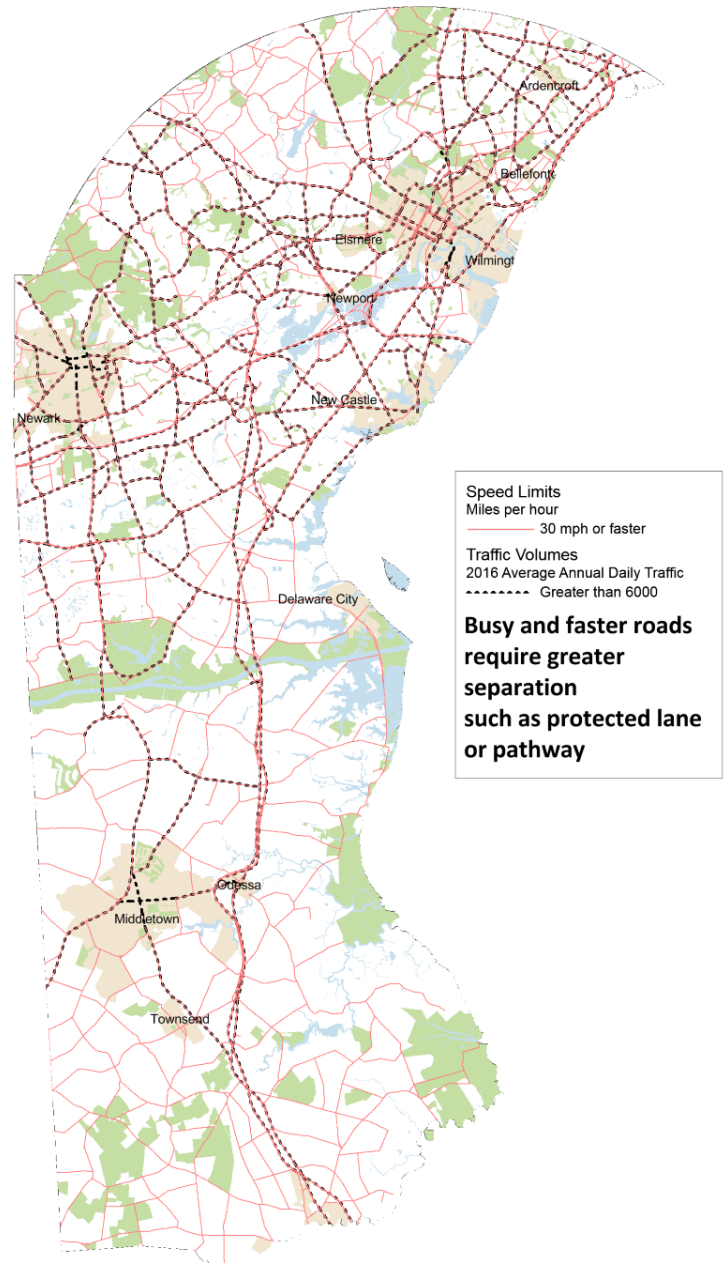
To be modified due to slower
completion of Delaware bicycle
Plan

Task 1 current status

- Collected GIS from DeIDOT and New Castle County
- Met with DeIDOT and NCCo
- Coordinating outreach with Delaware Greenways
- Planning winter presentations to municipal and civic stakeholders

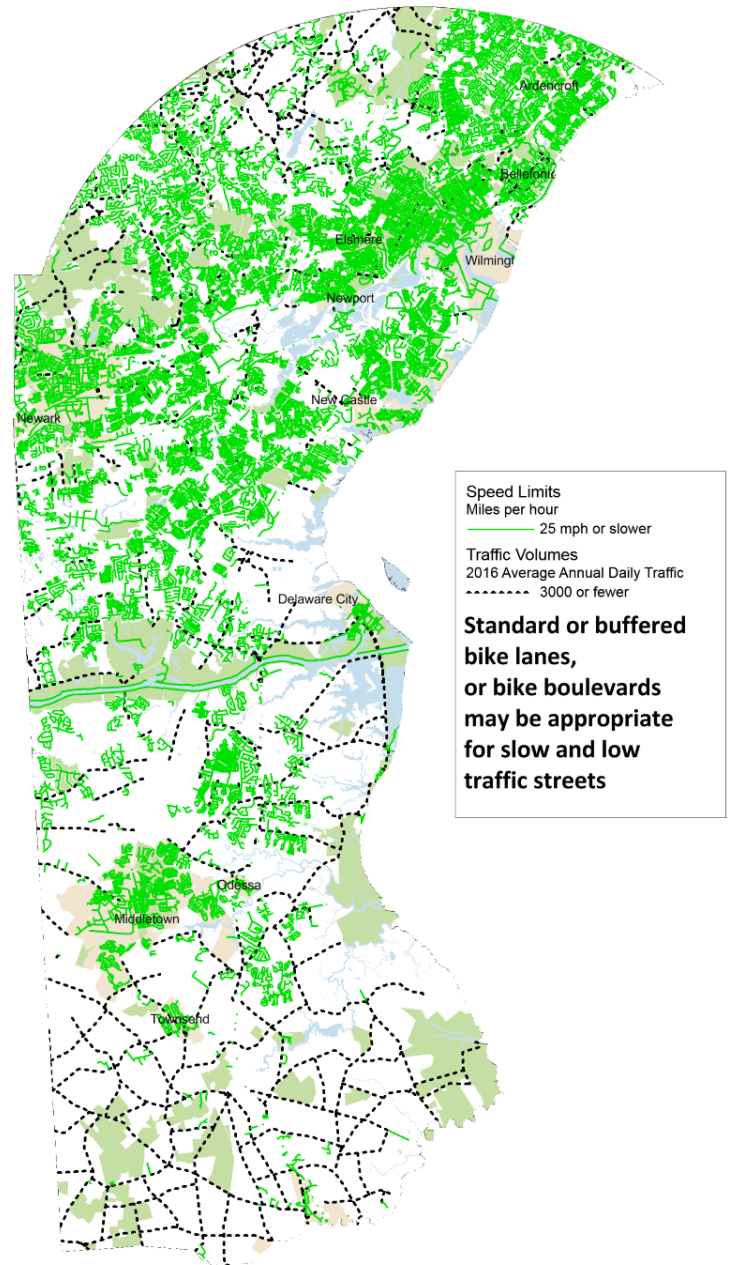
Roadway speed and volume

DeIDOT Road Inventory



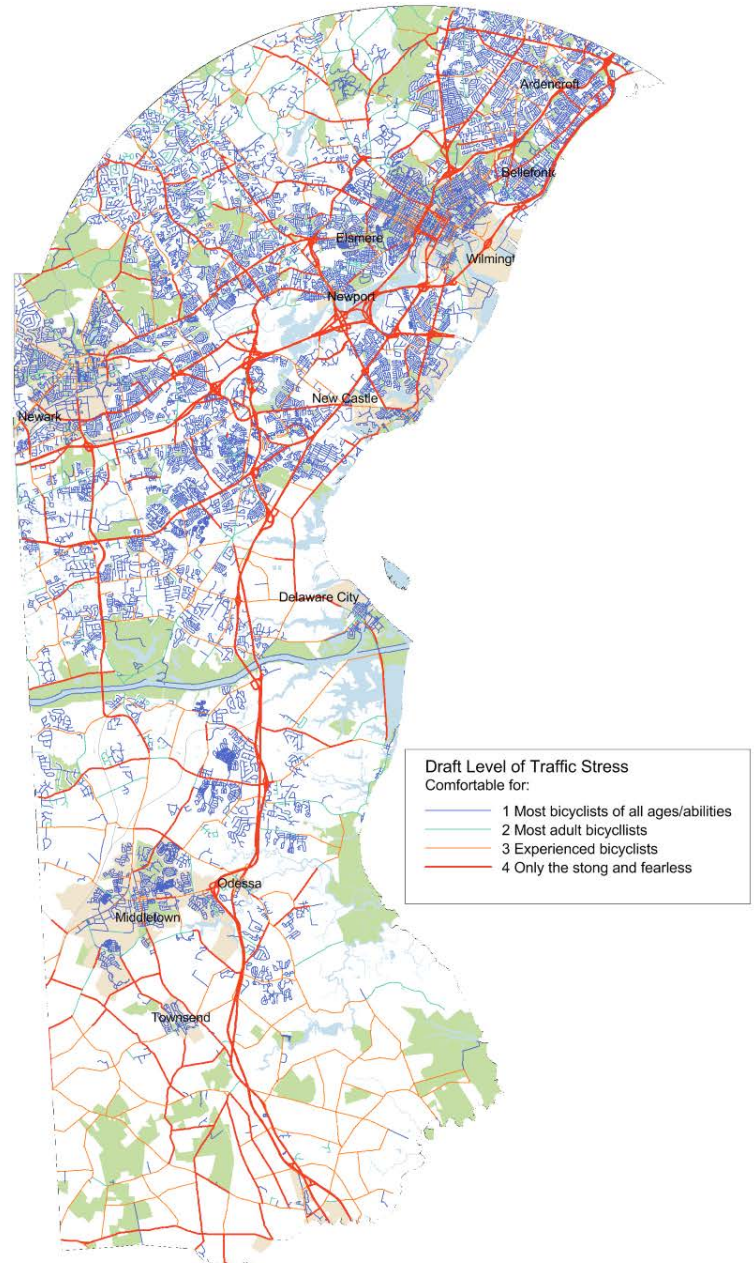
Roadway speed and volume

DeIDOT Road Inventory



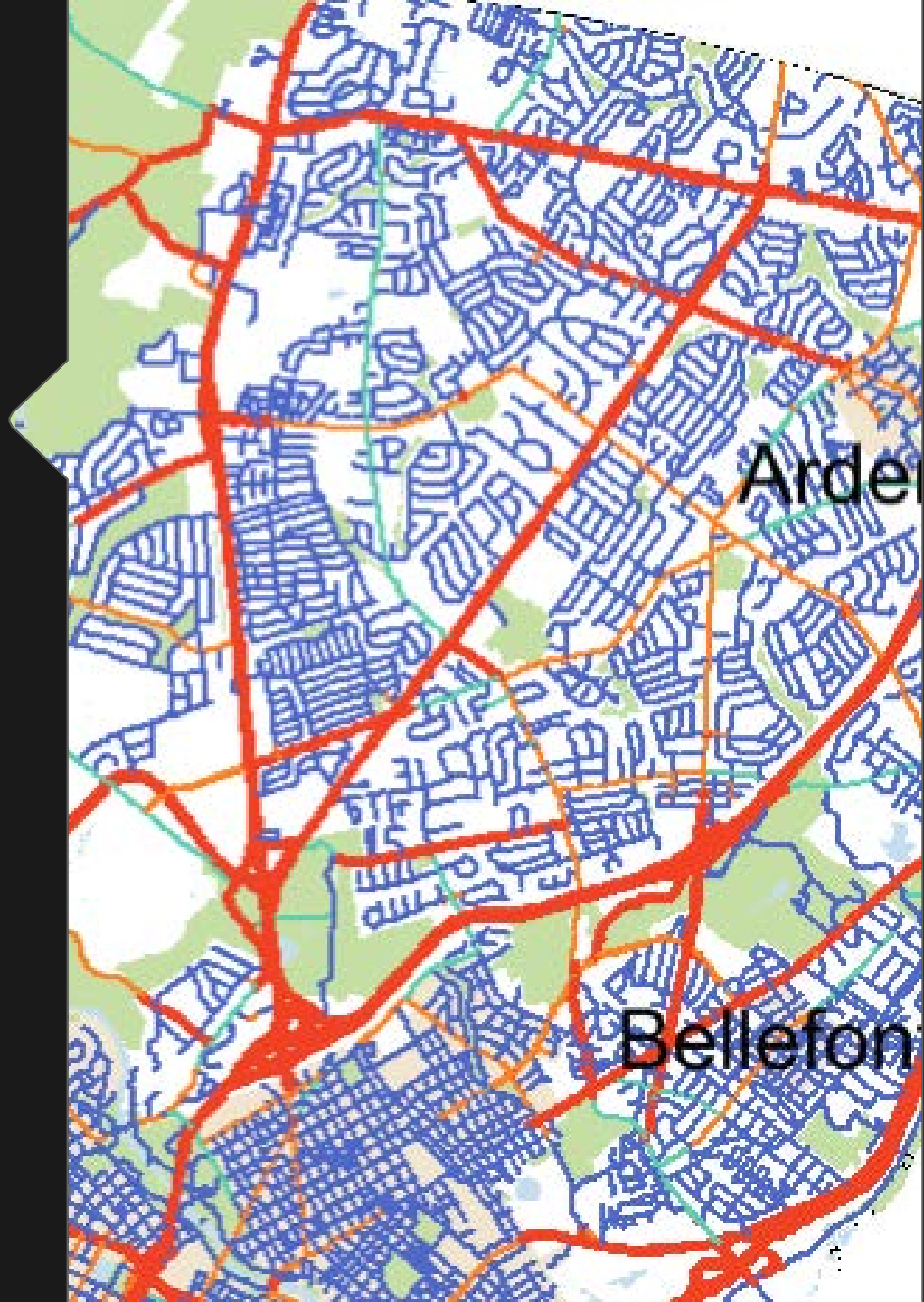
Level of Traffic Stress

Draft DeIDOT Analysis



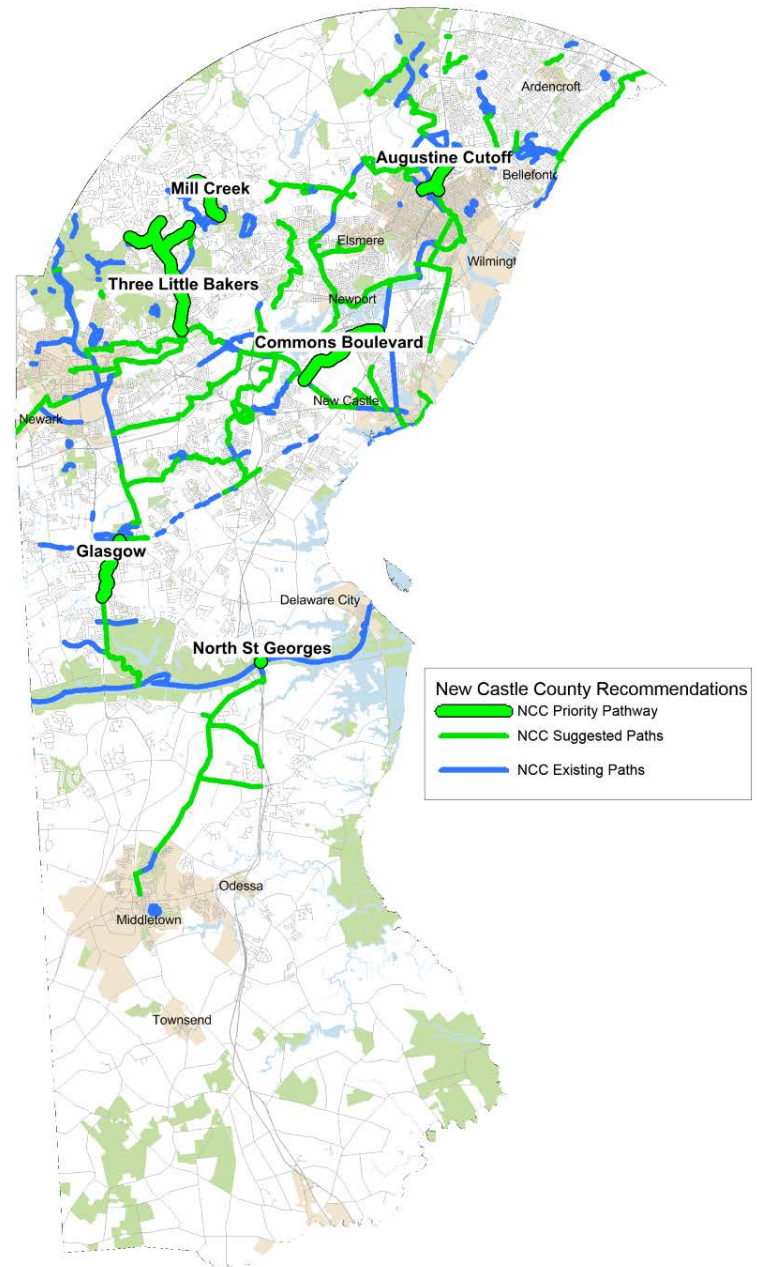
Level of Traffic Stress

Draft DeIDOT Analysis



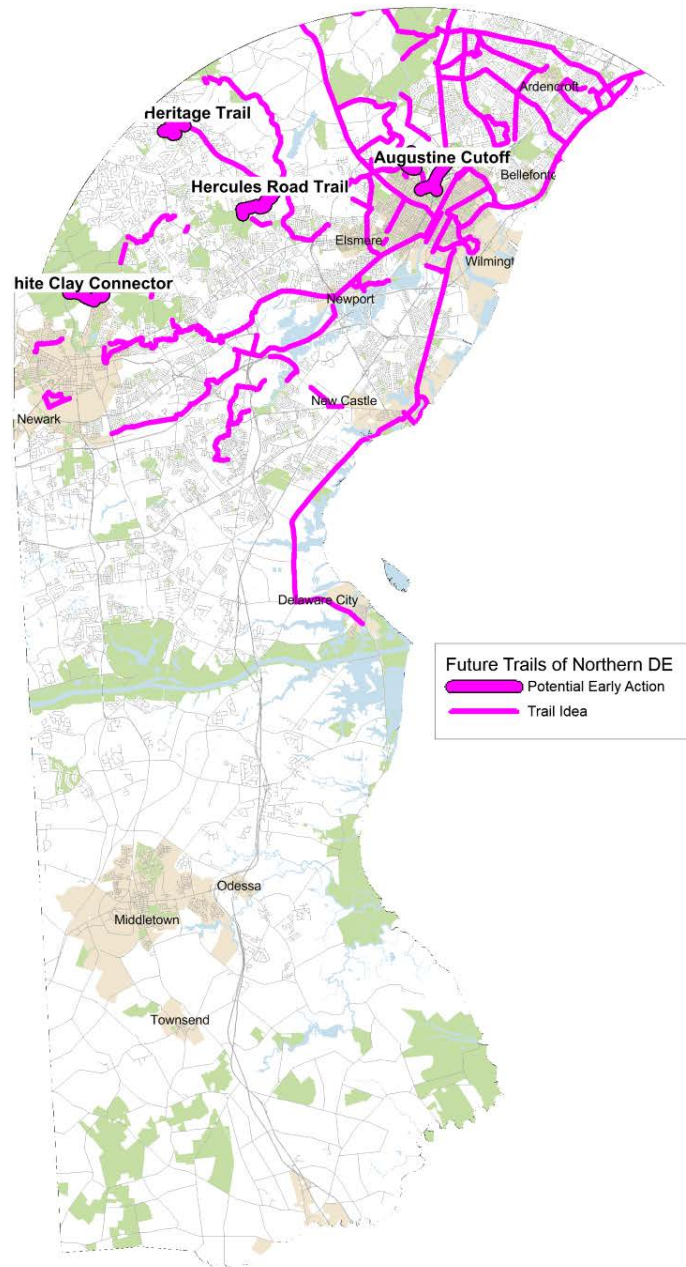
New Castle County Priorities

Draft suggested short-term connections



Northern Delaware Trails Coalition

Draft Potential Early Actions



Task 1 next steps

- Analyze GIS from DeIDOT
- Review Safe Routes to Schools recommendations
- Summarize Delaware Bicycle Policy Plan public comments
- Finish mapping existing conditions

Next Steps

- Establish/meet with advisory committee and focus groups
 - NCC, DelDOT, municipalities
 - NMTWG, Delaware Greenways, Bike Delaware, Delaware Bicycle Council
 - Nemours, DE Heal, DE Center for Health Innovation, Delaware Sierra Club, Clean Air Council
 - AARP, League of Women Voters, youth...Others?
- Seek feedback as part of other events
- Other ideas?



Questions and
comments

www.wilmapco.org/bikenc