



Ardentown Paths Plan Public Survey

February 2017

<http://www.wilmapco.org/ardentown>

The Ardentown Paths Plan seeks to identify, preserve, and enhance the network of paths in Ardentown, Delaware. This plan is being developed by a committee comprised of Town officials and residents, County and State officials, and WILMAPCO staff. Based on responses from a survey distributed in November, the steering committee has developed a list of draft recommendations. Please complete this brief survey to share your thoughts and vision for Ardentown's paths. This survey is also available on our website, linked above.

1. Are you an Ardentown resident?
☐ Yes ☐ No

2. Does your leasehold border a path?
☐ Yes ☐ No

3. Please complete Survey A on page 2.

4. Please complete Survey B on page 3. The map of recommendations is included on the last page.

5. Feel free to share any additional thoughts in the space below.

Please return completed surveys to WILMAPCO:

By mail:

Jake Thompson
 WILMAPCO
 850 Library Avenue, Suite 100
 Newark, DE 19711

By email:

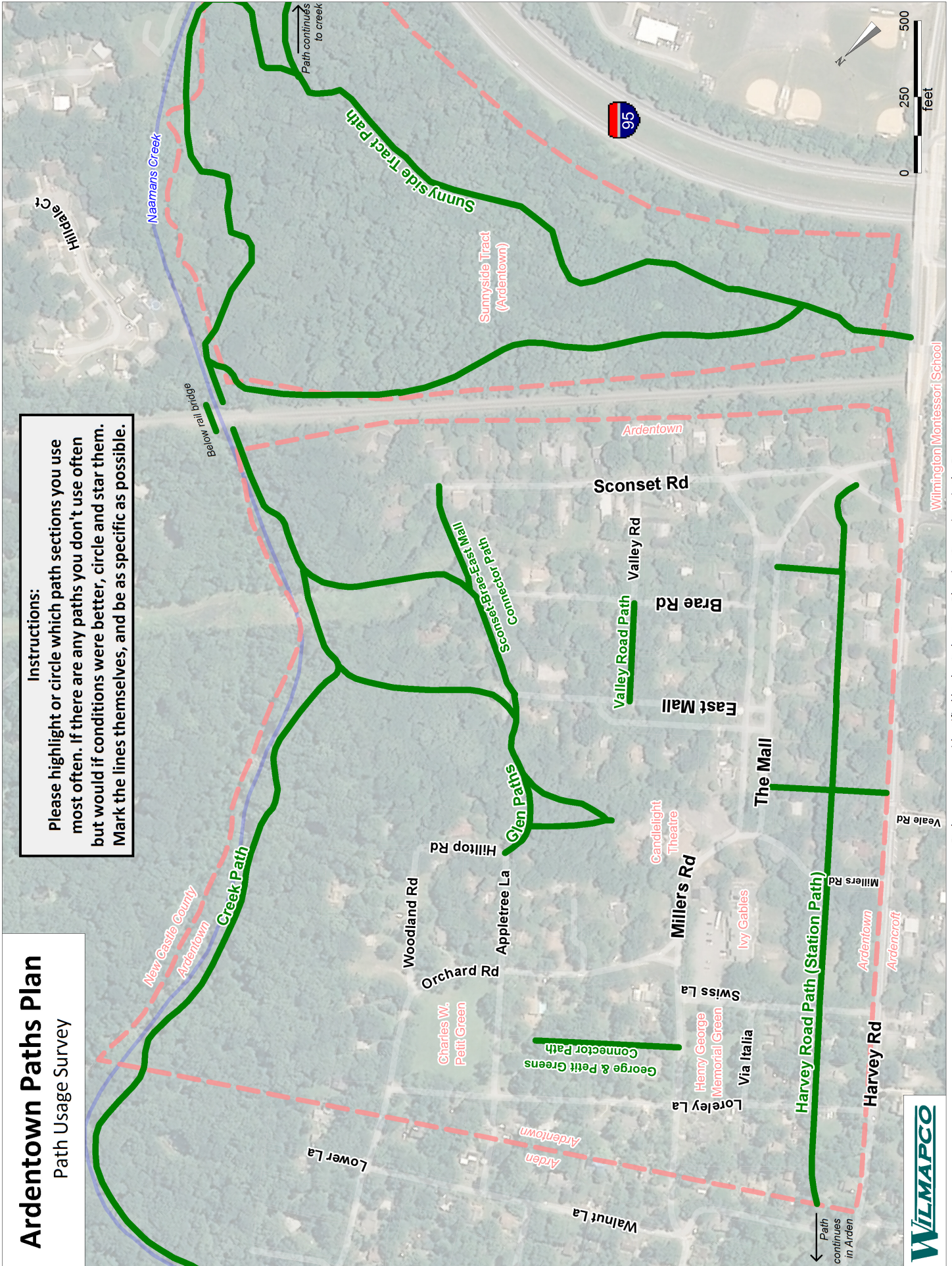
jthompson@wilmapco.org

By fax:

(302) 737-9584

Instructions:

Please highlight or circle which path sections you use most often. If there are any paths you don't use often but would if conditions were better, circle and star them. Mark the lines themselves, and be as specific as possible.



Ardentown Paths Plan Public Survey

February 2017

<http://www.wilmapco.org/ardentown>

Please indicate the three most needed recommendations by writing 1, 2, or 3 in the boxes on the left. See the map on the next page for more details.

☐

1. Keep paths cleared, based on priority

☐

2. Name and sign paths

☐

3. Improve connection across Naamans Creek and CSX railroad

☐

4. Open historic paths

☐

5. Improve connection from Harvey Road Bridge to Sunnyside Tract Path

☐

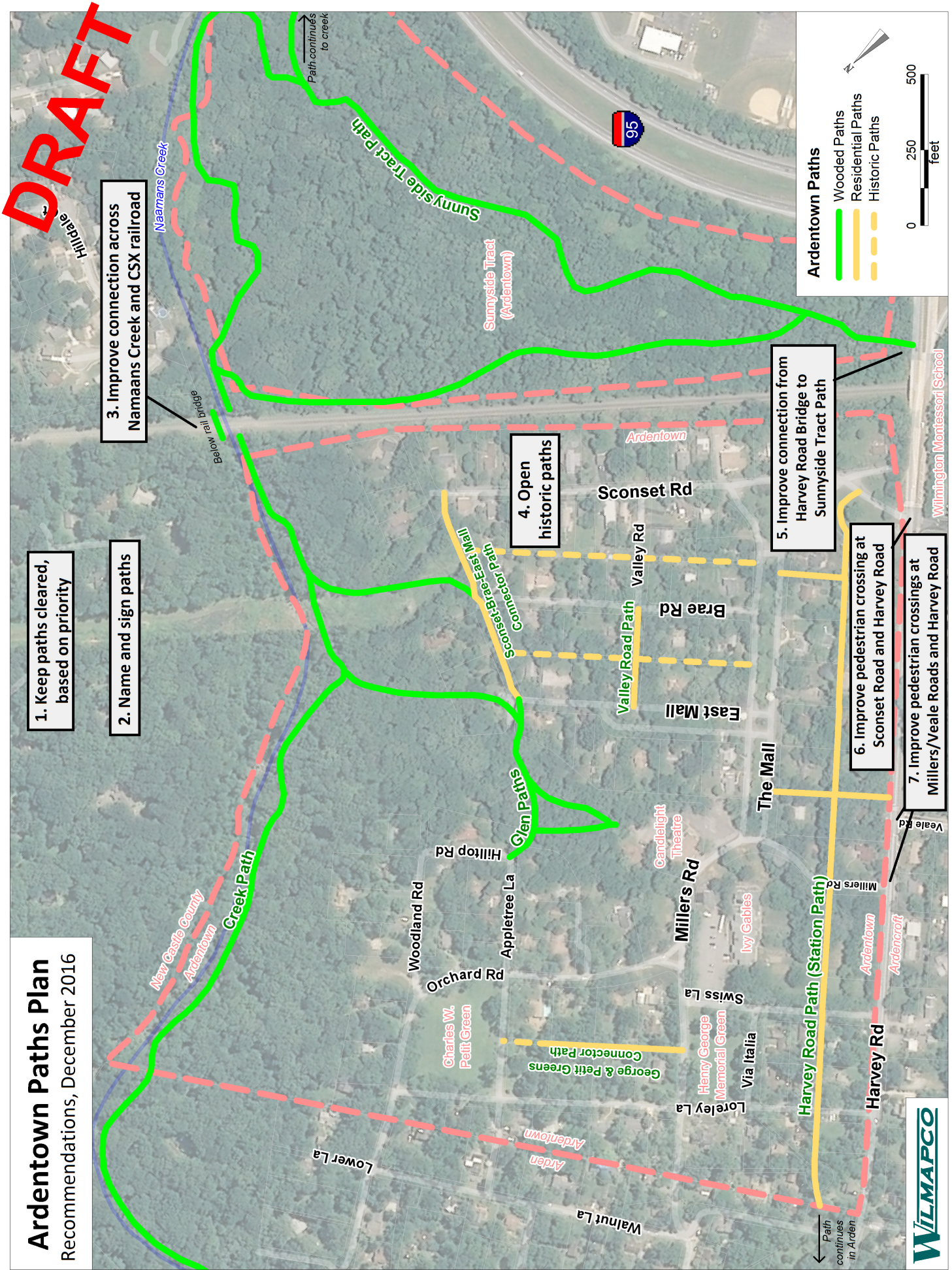
6. Improve pedestrian crossing at Sconset Road and Harvey Road
(to the Wilmington Montessori School)

☐

7. Improve pedestrian crossings at Millers/Veale Roads and Harvey Road

☐

8. Other (Write a recommendation in the space below)



Path names are as identified by the Ardentown Planning Committee in the Report and Recommendations from the Planning Committee Regarding Village Paths, 2013.