

Air Quality Subcommittee (AQS) Meeting Notes

November 14, 2013

Attendees

Gregory Becoat, EPA
Deanna Cucinnello, DNREC
Heather Dunigan, WILMAPCO
Mike DuRoss, DelDOT (teleconference)
James Galvin, D/KC MPO
Valerie Gray, DNREC
Jay Gerner, DelDOT (teleconference)
Tamika Graham, WILMAPCO
Asrah Khadr, EPA
Molla Sarros, MDE
Cathy Smith, DTC
Bill Swiatek, WILMAPCO
Rich Vetter, D/KC MPO
Phil Wheeler, DNREC
Tigist Zegeye, WILMAPCO

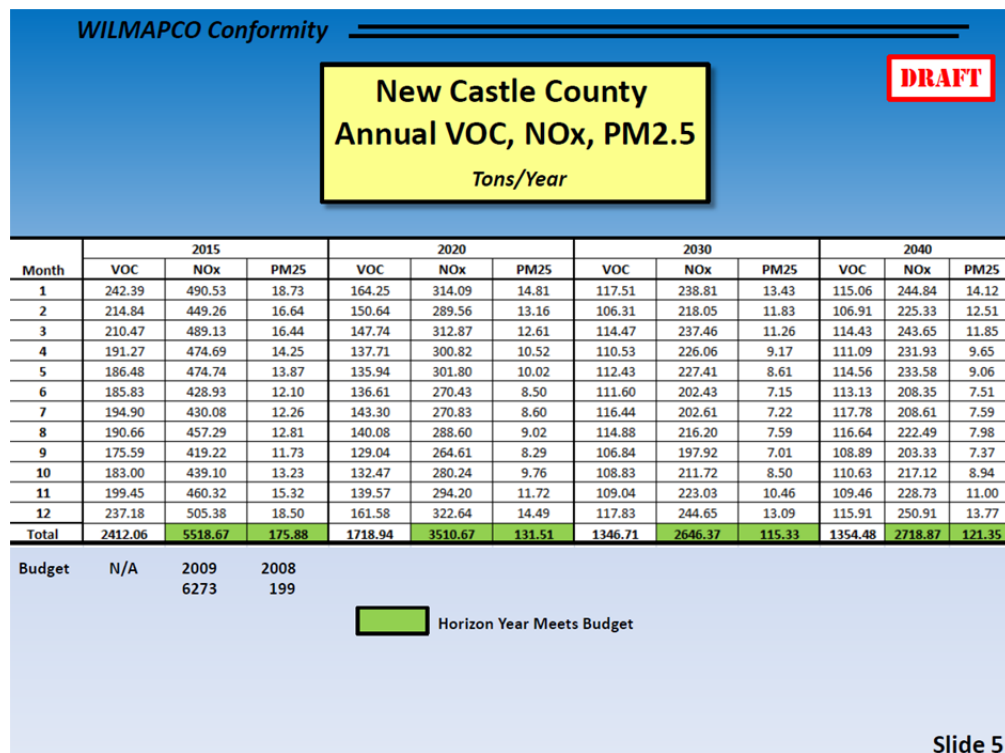
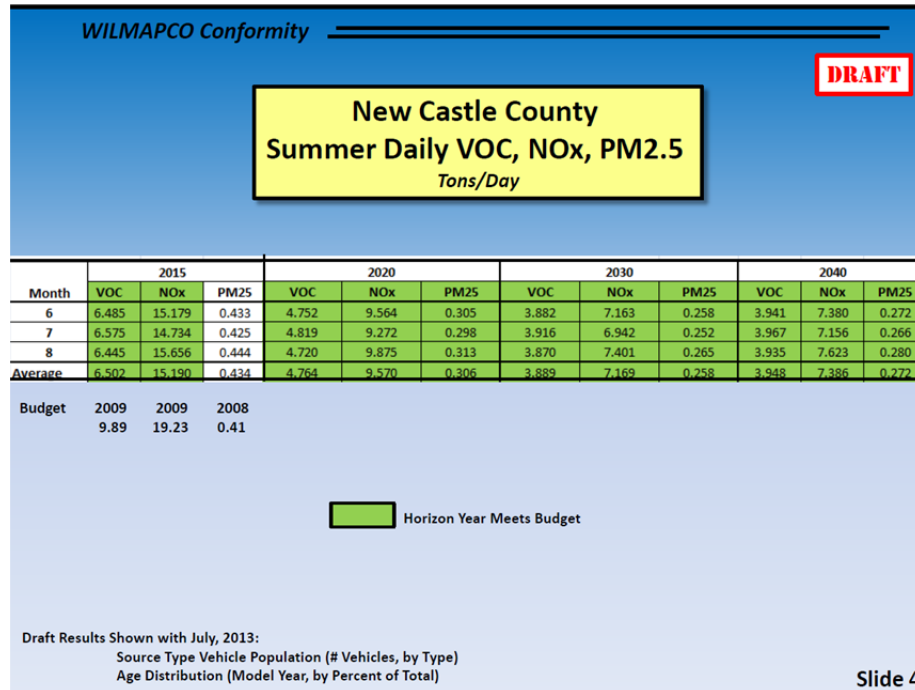
Acceptance of the Notes from September 12

- The notes were accepted.

Draft FY 2015 New Castle County TIP Conformity Analysis

- Mr. DuRoss provided an overview of this agenda item.
- Handouts: *Air quality conformity timeline; WILMAPCO conformity analysis (November 13, 2013)*
- Mr. Swiatek reviewed the air quality conformity schedule. The draft conformity document is set for release in December by AQS and TAC, January by Council. A public comment period will run from January 13 through March 3, with a public meeting in February. Council adoption is expected March 13.
- Mr. DuRoss reviewed the draft conformity analysis. All applicable budgets and baseline tests pass with a draft model run, with the exception of 2015 direct PM_{2.5}. There the daily baseline is set as 0.41 tons/day while these emissions are modeled as 0.43 tons/summer day in 2015.

- Mr. DuRoss feels the key reason for those higher figures is the older vehicle fleet of 2013, used in the analysis, compared to years past. He presented data to quantify the higher percentage of older, dirtier vehicles.
- The draft conformity analysis is presented below:



- Mr. Becoat said that once the PM2.5 budgets are found adequate –which is imminent – they will supersede the baseline test and will be used for both the annual 1997 and daily 2006 PM2.5 standards. Here are the 2012 budgets (*supplied by EPA subsequent to the meeting*):
 - o Direct PM2.5: 199 tons/year (0.545 tons/day)
 - o NOx: 6,273 tons/year (17.186 tons/day)
- Further, Mr. Becoat noted that due to an EPA clean data determination in January 2013, 2016 or 2017 could be used instead of 2015.
- After a brief discussion, it was decided to model 2017 to be used instead of 2015 in the event that the 2012 budgets are not in place prior to the release for public comment.
- *Following the meeting it was learned that MOVES-generated baseline figures for 2008 were available from DNREC and could be used in place of the 2008 baseline figures presented above. These are: 282.1 tons/year (0.773 tons/day) for direct PM2.5; 9,311 tons/year (25.51 tons/day) for indirect PM2.5.*

Kent County Regionally Significant Projects

- Mr. Galvin provided an overview of this agenda item.
- Handouts: *Assorted air photo maps of Camden Bypass Concept Option B; segment of US 13*
- Mr. Galvin requested feedback on the regional significance of two projects: Camden Bypass and the expansion of US 13 from two to three lanes (each direction) from Webb's Lane to Woodside.
- The group felt that the Camden Bypass project's length, coupled with its connection to major highways and potential to increase development pressure made it regionally significant.
- The US 13 project would also be regionally significant.

Draft FY 2015 TIP

- Ms. Dunigan provided an overview of this agenda item.

- Handouts: *listing of projects in the draft FY 2015 – 18 TIP, December 2013; project descriptions of new TIP projects*
- Ms. Dunigan reviewed the new projects in the draft FY 2015 TIP. These include:
 - o Damn Preservation Program
 - o SR 299, SR 1 to Catherine Street
 - o Elkton Road: Maryland State Line to Casho Mill Road (dropped to out-years)
 - o US 13, Duck Creek to SR 1
 - o Wilmington Initiatives: 4th Street, Walnut Street to I-95
 - o Wilmington Initiatives: Walnut Street, MLK to 16th St.
 - o MARC Maintenance Facility
 - o Susquehanna River Rail Bridge
- Ms. Dunigan also noted a discrepancy in the model versus the TIP funding list regarding the SR 1 widening project. While the draft TIP only lists the project as: SR 1: Tybouts Corner to SR 273, the project eventually will extend further south to the canal. Mr. Swiatek said that this was accounted for in the model. The northern portion was modeled as in service by 2020, the southern portion by 2030. Ms. Zegeye said this reflects DelDOT's intention, and they have to change the project title.
- Mr. Swiatek reviewed the draft timeline for conformity. Results are expected by November 14. A public comment period is set to run between January and March with a public workshop in February. Council adoption is expected March 13.

Other

- Ms. Sarros suggested looking into options to reduce emissions associated with members attending AQS meetings. These could include telecommuting, carpooling, etc.
- Mr. Swiatek noted that a FHWA webinar is coming up on interim guidance for the CMAQ program under MAP-21.