

Community Workshop – February 6, 2019

Welcome to the **East 7th Street Peninsula Community Workshop.**

Purpose and Need

The primary purpose of this study is to maximize future growth potential and viability of the East 7th Street Peninsula through recommended modifications to stormwater management, land-use, and transportation network operations while mitigating flood impacts, enhancing recreational amenities and preserving the culturally and historically significant landmarks on the peninsula.



East 7th Street - Heading East



Industrial Street - Heading East

Project Schedule

- Visioning Workshop – June 26, 2018
- Wilmington Initiatives Meeting – May 16, 2018
- 7th Street Advisory Coalition Meeting – September 19, 2018
- Wilmington Initiatives Meeting – September 20, 2018
- **Draft Concept Workshop– February 6, 2019**
- Refine Concept – Winter/Spring 2019
- Final Concept Presentation – Spring 2019

East 7th Street Peninsula Analysis



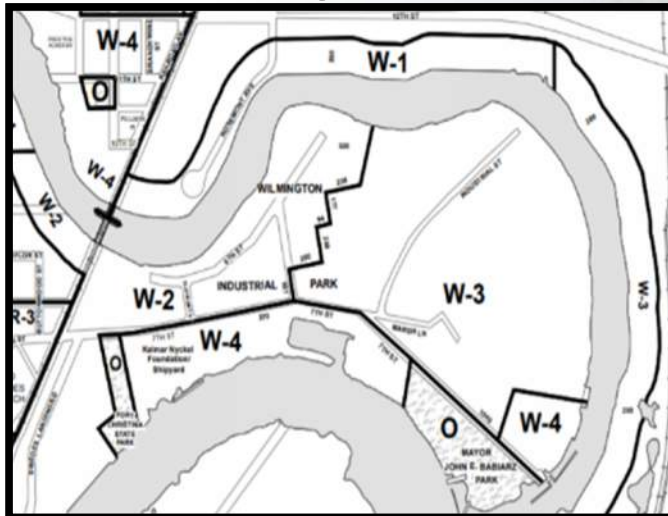
Flooding/Stormwater Management



Environmental Constraints/Resources



Utilities



Land Use/Zoning



Recreational Amenities



Existing Transportation Network

Flooding/Stormwater Management

- Propose New Tide Gates
- Propose New Pipe Network
- Set Base “Build” Elevation (Above Flood Levels)
- Elevate Roadways
- Improve Stormwater Management/Storage
- Propose Riparian Buffers
- Propose Living Shoreline



Transportation Network

- 4th Street – 4 Way Signal
- Elevate Roadways
- Open 8th St Viaduct Connection to East Side Community
- Provide Connection: 8th St to Industrial Blvd
- Propose Multi-Use Path Adjacent To All Roadways
- Propose Pedestrian Lighting Along All Roadways

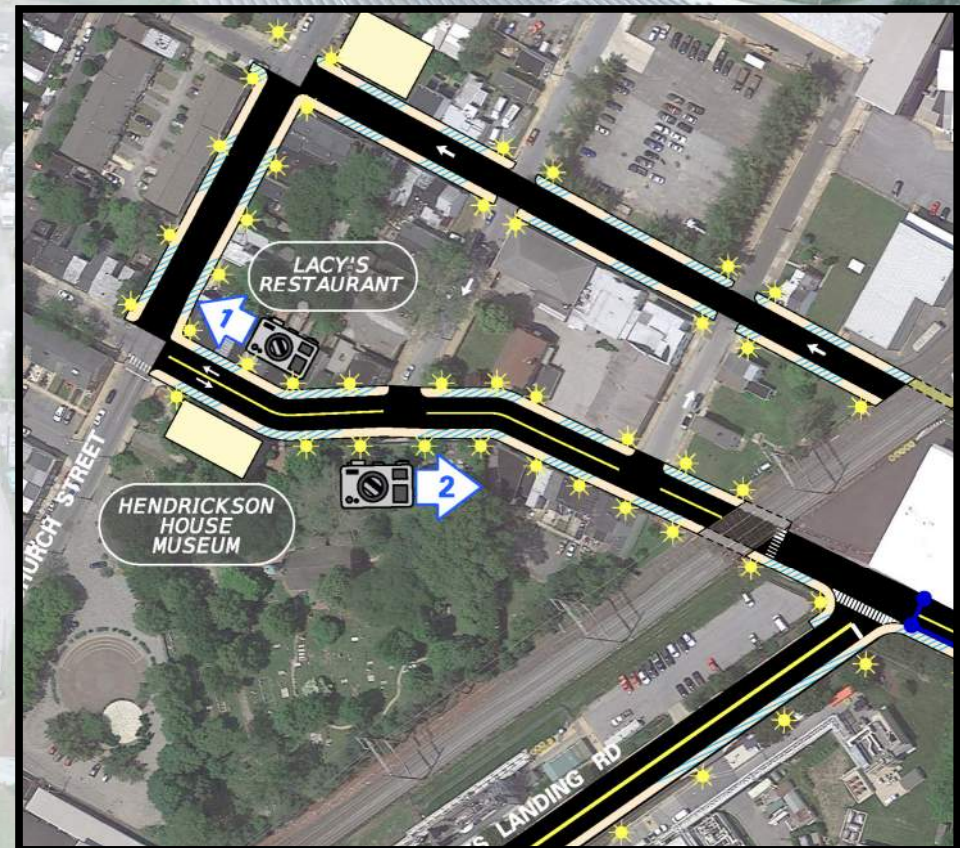


East Side Community Improvements

- Streetscape Improvements
- Improve Sidewalks/Add Brick Accents
- Improve Intersection Crossings With Crosswalks
- Pedestrian Lighting
- Wayfinding/Gateway Signs
- Banners



EAST 7TH STREET PENINSULA
EAST 7TH STREET PENINSULA
EAST 7TH STREET PENINSULA
EAST 7TH STREET PENINSULA



Renderings

Location 1



Location 2



Location 3



Proposed Utilities

- Relocate Utility Poles Vertically To Allow For Raised Roadway
- Coordinate With Utilities For Upgrades/Improvements
- Existing Overhead Utilities Remain Overhead
- Possibly Underground Brand New Utilities Coming To Peninsula In Future



Land Use/Zoning

- New Warehouse Facility
- Potential Athletic fields
- Preserved Green Space And Waterfront Buffer



Recreational Amenities

- Riverwalk
- Educational Center
- Kayak/Boat Launch
- Food Truck Area
- Benches



Thank You!

Thank you for taking time to participate in tonight's community workshop.

Written comment forms are available. Please leave the form in the comment box or mail/email it to WILMAPCO. Your comments are important to us and will be considered along with comments from government and regulatory agencies. Safety and operational requirements will also be taken into account. Therefore, while all comments are considered, all comments may not be incorporated into the project.

Dave Gula
100 Discovery Boulevard, Suite 800
Newark, DE 19711
Email: dgula@wilmpaco.org
Phone: (302) 737-6205 Ext. 122