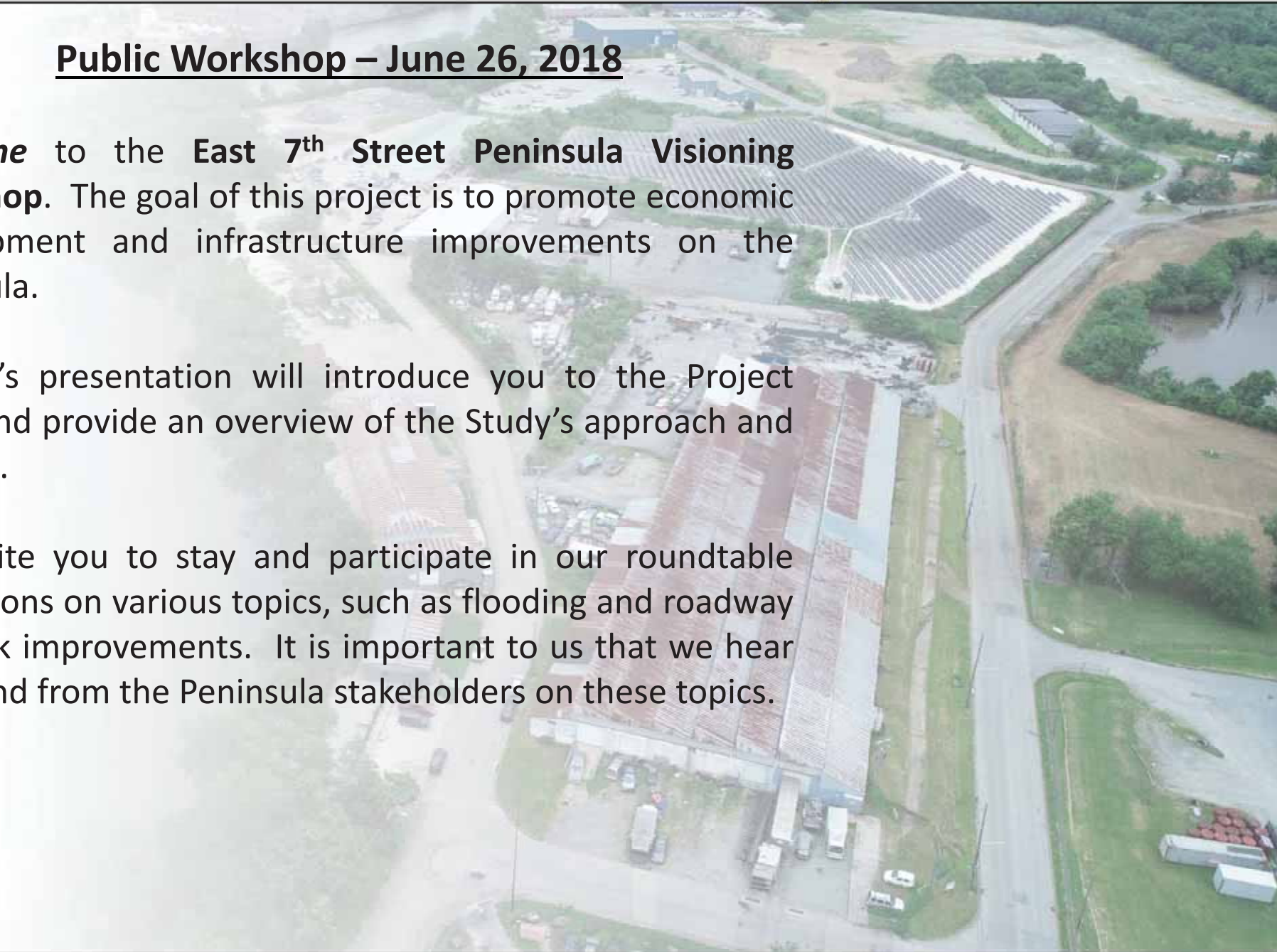


Public Workshop – June 26, 2018

Welcome to the **East 7th Street Peninsula Visioning Workshop**. The goal of this project is to promote economic development and infrastructure improvements on the Peninsula.

Tonight's presentation will introduce you to the Project Team and provide an overview of the Study's approach and process.

We invite you to stay and participate in our roundtable discussions on various topics, such as flooding and roadway network improvements. It is important to us that we hear first hand from the Peninsula stakeholders on these topics.



STUDY AREA MAP



495

FORT CHRISTINA PARK

MAYOR JOHN E. RABINARZ PARK

13

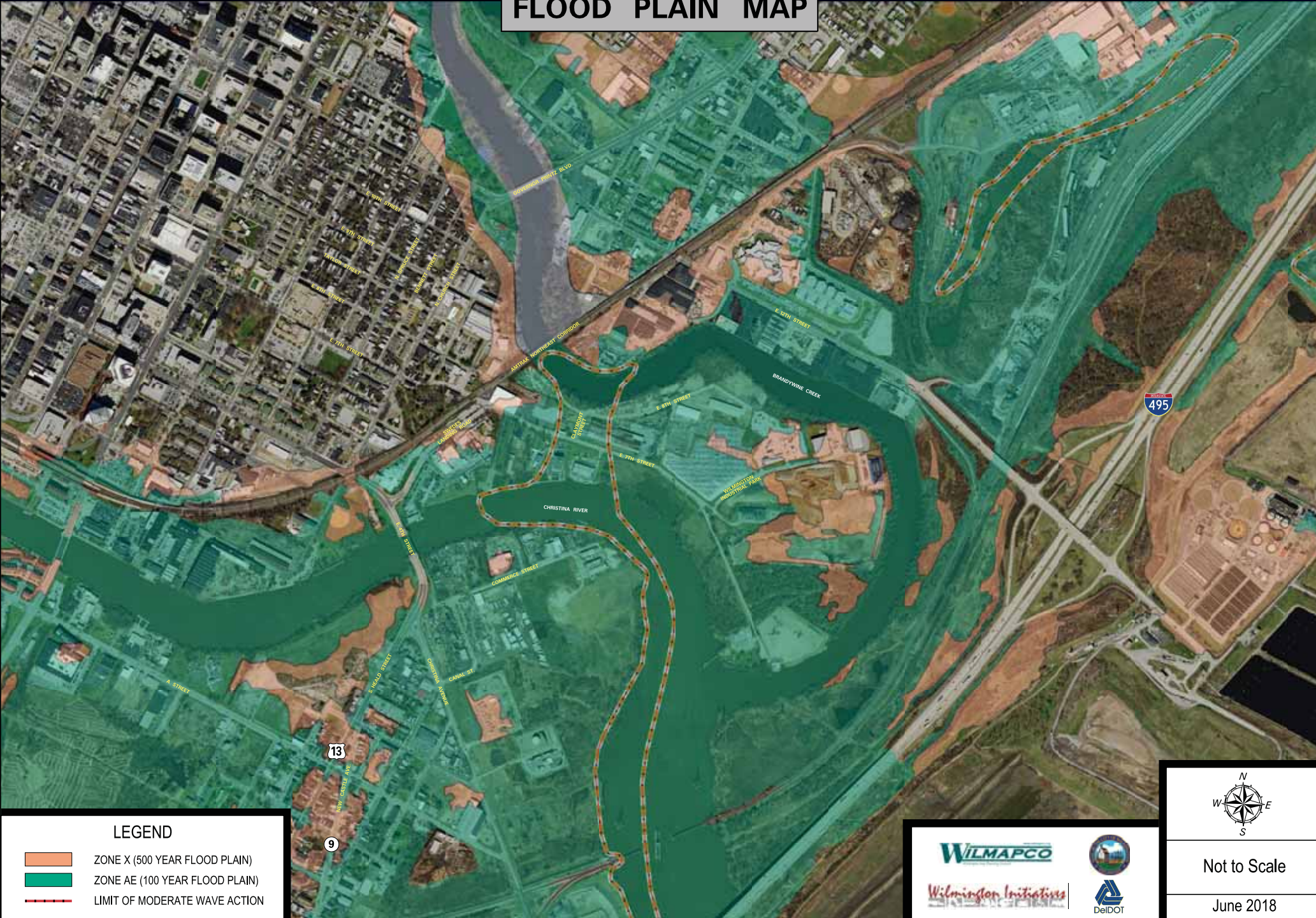
9






WILMAPCO
Wilmington Initiatives

Scale: 1" = 300'
(40"x30")
June 2018

FLOOD PLAIN MAP



LEGEND

-  ZONE X (500 YEAR FLOOD PLAIN)
-  ZONE AE (100 YEAR FLOOD PLAIN)
-  LIMIT OF MODERATE WAVE ACTION



Not to Scale

June 2018



Project Schedule

- Visioning Workshop – June 26, 2018
- Alternatives Workshop – Fall 2018
- Refine Alternatives – Winter 2018
- Preferred Alternative Workshop – Spring 2019





Thank You!

Thank you for taking time to participate in tonight's workshop.

Written comment forms are available. Leave the form in the comment box or mail/email it to WILMAPCO. Your comments are important to us and will be considered along with comments from government and regulatory agencies. Safety and operational requirements will also be taken into account. Therefore, while all comments are considered, all comments may not be incorporated into the project.

Dave Gula
850 Library Avenue, Suite 100
Newark, DE 19711
Email: dgula@wilmpaco.org
Phone: (302) 737-6205 Ext. 122