



2050 REGIONAL TRANSPORTATION PLAN

OVERVIEW OF DRAFT POLICIES AND PROJECTS

Virtual Meeting
November 2, 2018



WELCOME AND INTRODUCTIONS



Bill Swiatek, AICP
Principal Planner



Heather Dunigan
Principal Planner



Julie Ratcliffe
*Public Involvement
Specialist, JMT*

HOUSEKEEPING



- Can't hear us? Make sure you are connected to audio via your computer or telephone.
- Experiencing technical difficulties? Use the raise your hand feature and we will try to assist you.
- Please hold questions/comments to the end and use your chat box to submit.
- A post-meeting survey will be sent to all registrants and all meeting materials will be posted to the WILMAPCO website.
- This meeting is being recorded.

AGENDA



- Intro to WILMAPCO and the 2050 Regional Transportation Plan
- Polling and Whiteboard Activity
- Next Steps
- Q&A



First, a little about you...

WILMAPCO AND THE TRANSPORTATION PLANNING PROCESS



WHO IS WILMAPCO ANYWAY?



- The Wilmington Area Planning Council or WILMAPCO is the regional transportation planning agency for New Castle County, Delaware and Cecil County, Maryland.
- As the federally designated Metropolitan Planning Organization (MPO), WILMAPCO is charged with planning and coordinating transportation investments for the region based on federal policy, local input, technical analysis, and best practices.
- Our role is to educate and involve the public to ensure that you have a say in the transportation decision-making and funding process. **We do not have a dedicated source of funding to make projects a reality, this falls on the counties, towns/cities, and DeIDOT.**

Community Outreach

ongoing



Regional Transportation Plan (RTP)

*20 year plan
updated every 4 years*

Unified Planning Work Program (UPWP)

*1 year plan
updated annually*

Congestion Management System (CMS)

updated annually

Transportation Improvement Program (TIP)

*4 year program
updated annually*

**TRANSPORTATION
PLANNING PROCESS**

THE REGIONAL TRANSPORTATION PLAN (RTP)

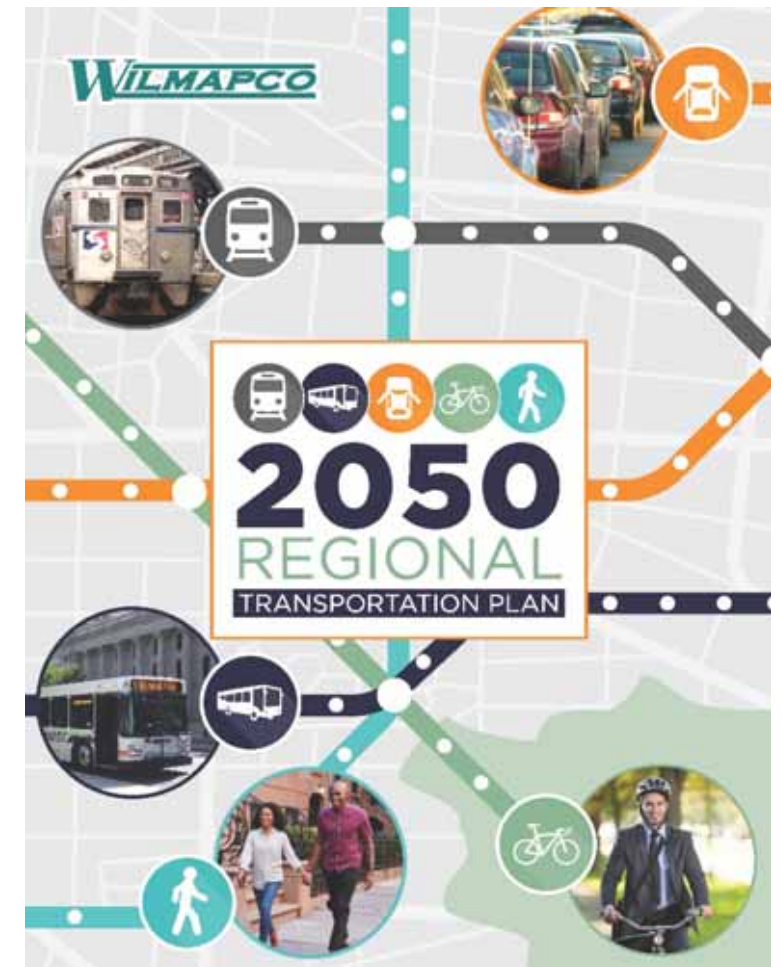


2050 REGIONAL TRANSPORTATION PLAN (RTP)



Our principal plan

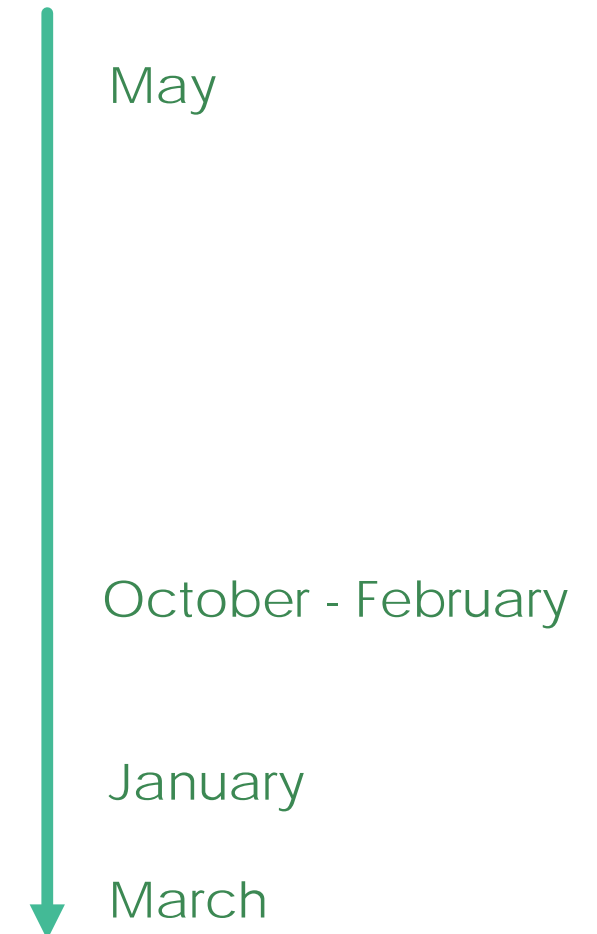
- **Strategic Policy:** goals, objectives, actions
- **Major transportation projects:** constrained and aspirational
- Updated every four years (since 1996)
- Update due March 2019



SCHEDULE – KEY TASKS



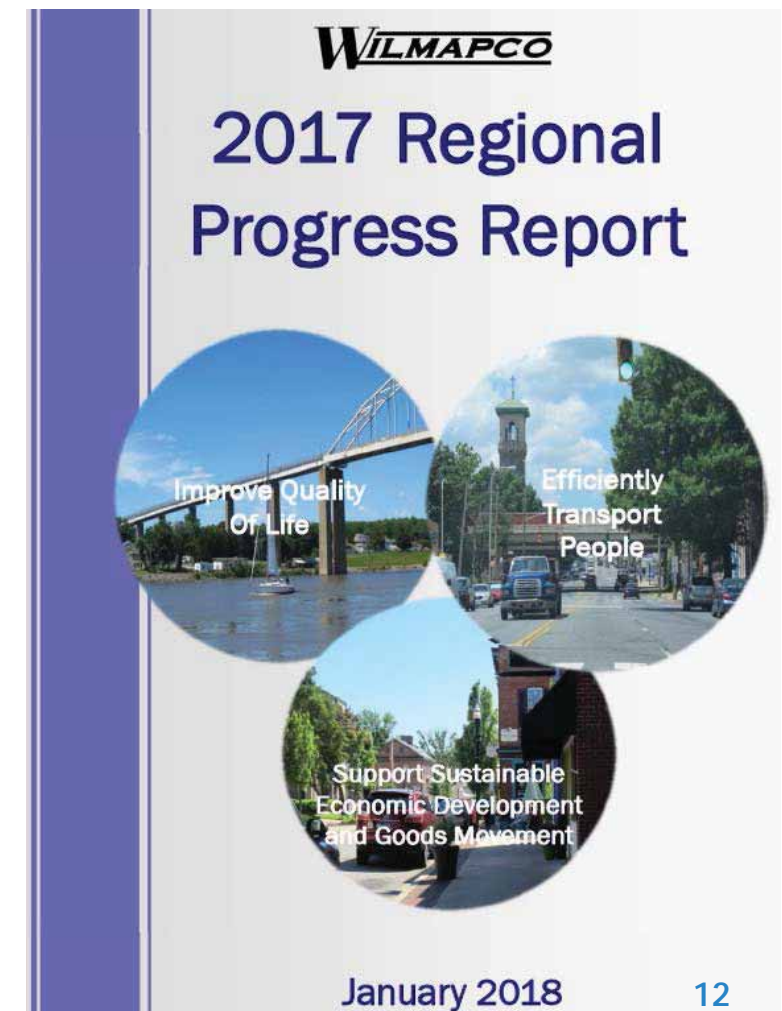
- Review of *Progress Report & Public Opinion Survey*
- Develop draft goals, objectives, actions
- Agency/Civic/Municipal outreach
- Develop project lists
- Air quality conformity
- Public outreach (virtual and popup workshops/online survey)
- Document refinement
- Public Comment Period
- Adoption



TRACKING PROGRESS: PROGRESS REPORT



- 2017 Regional Progress Report
- Relates trends to Plan's actions
- Performance-based
- Informs development of RTP



TRACKING PROGRESS: PROGRESS REPORT



21% of actions



29% of actions



50% of actions

MORE

- Growth in rural areas
- Single occupancy vehicle trips
- Vehicle miles traveled
- Crashes

BETTER

- Air quality from transportation
- Local plan implementation
- Transportation justice initiatives
- Bike/pedestrian connections

PUBLIC OPINION SURVEY



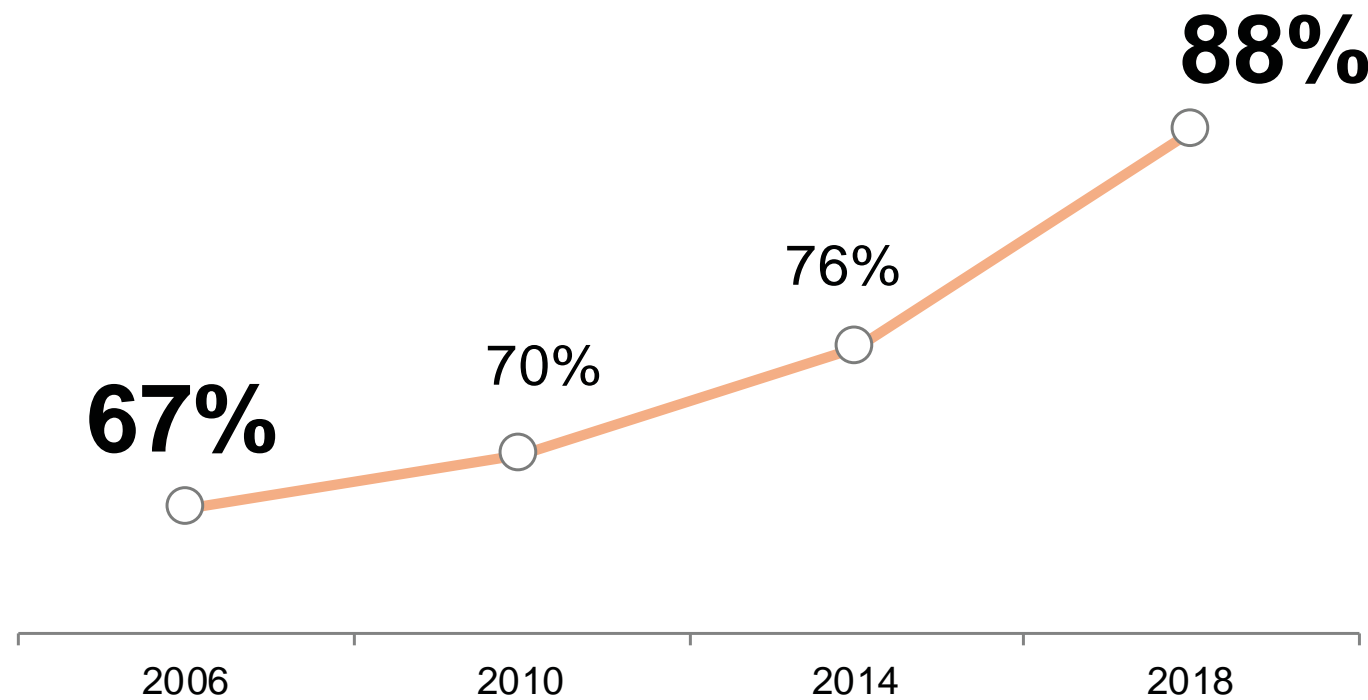
- Statistically valid survey of 600 residents
- Demographic Quotas
- Opinions of transportation system and policies



PUBLIC OPINION SURVEY: SAMPLE



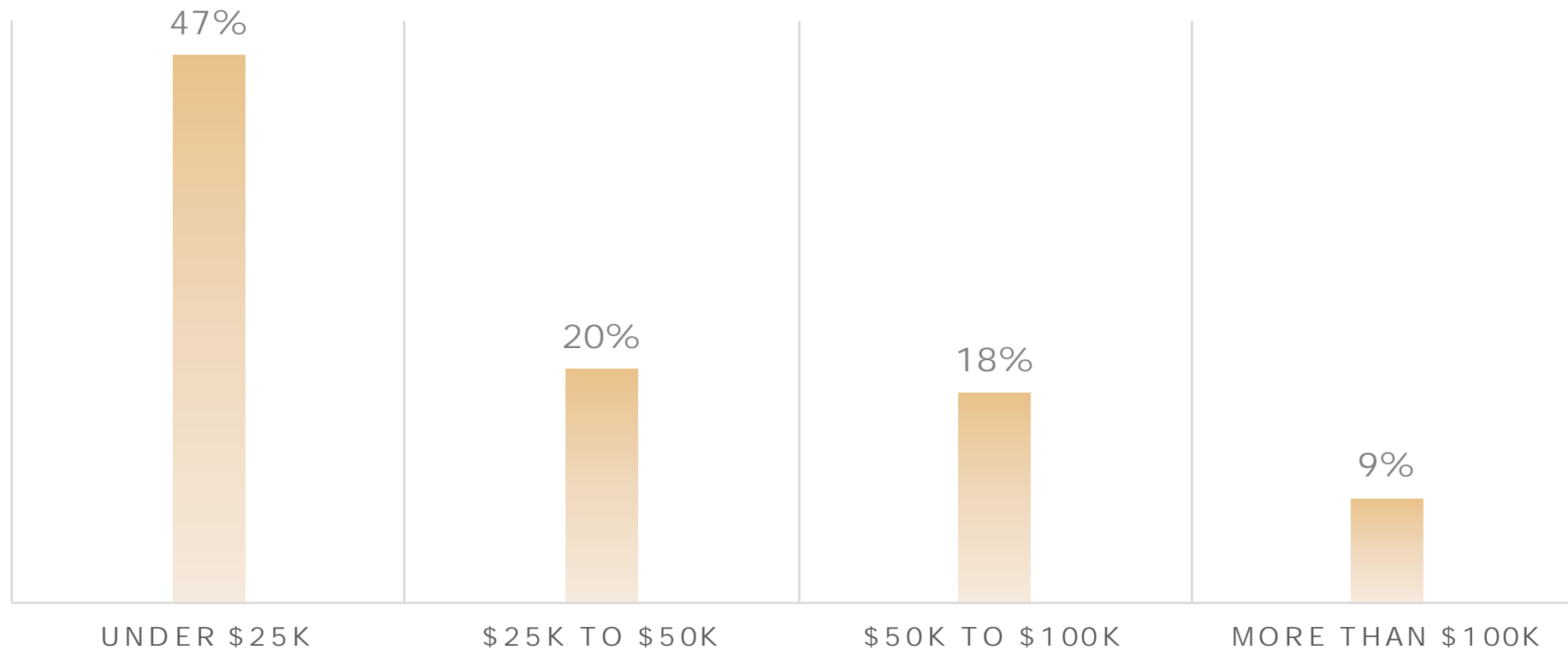
The Transportation System Meets My Needs



PUBLIC OPINION SURVEY: SAMPLE



Transportation Sometimes Keeps Me From Activities (by household income)



2050 RTP GOALS AND OBJECTIVES



2050 RTP: STRATEGIC POLICY



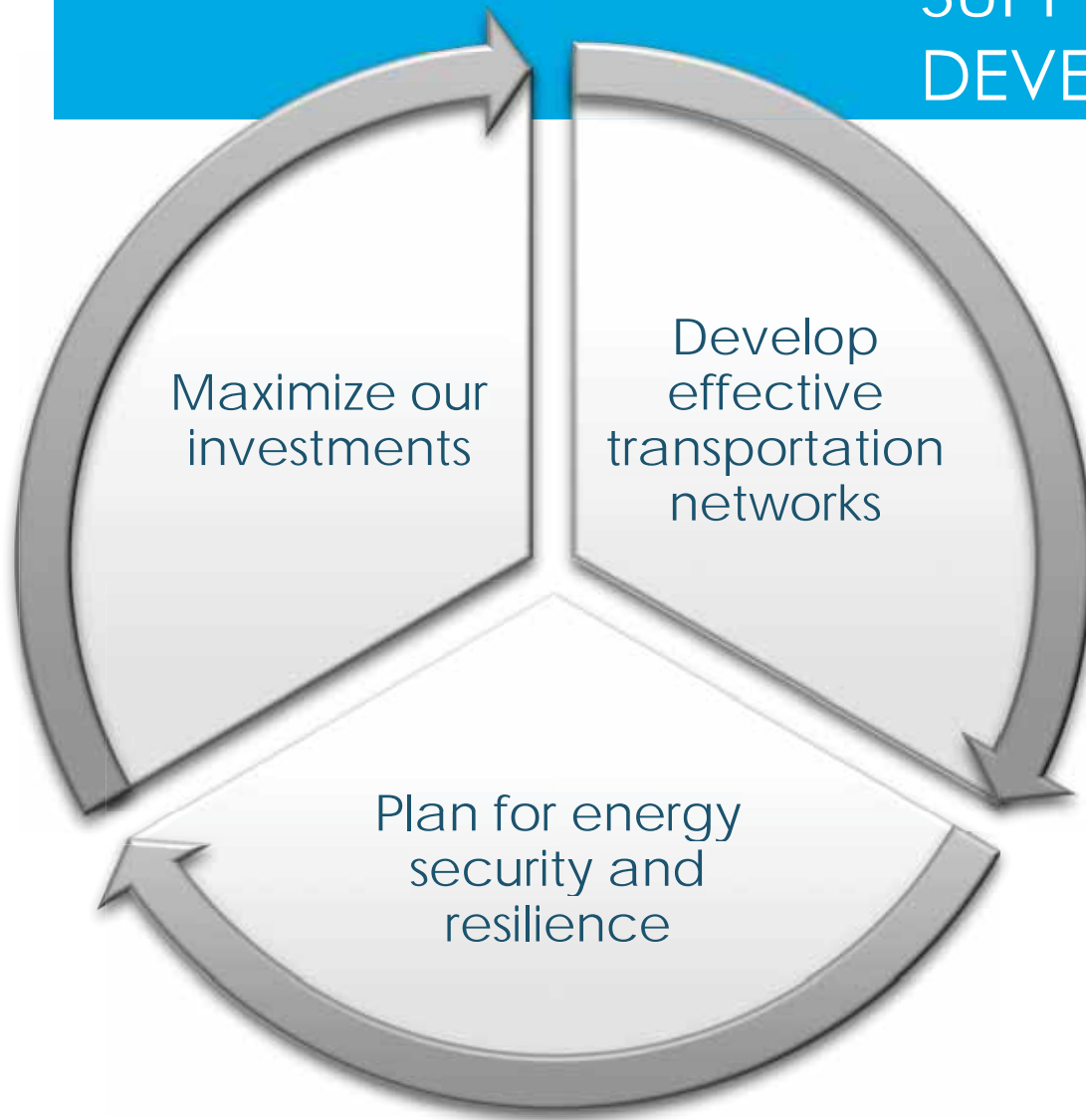
Goals

Objectives

Actions

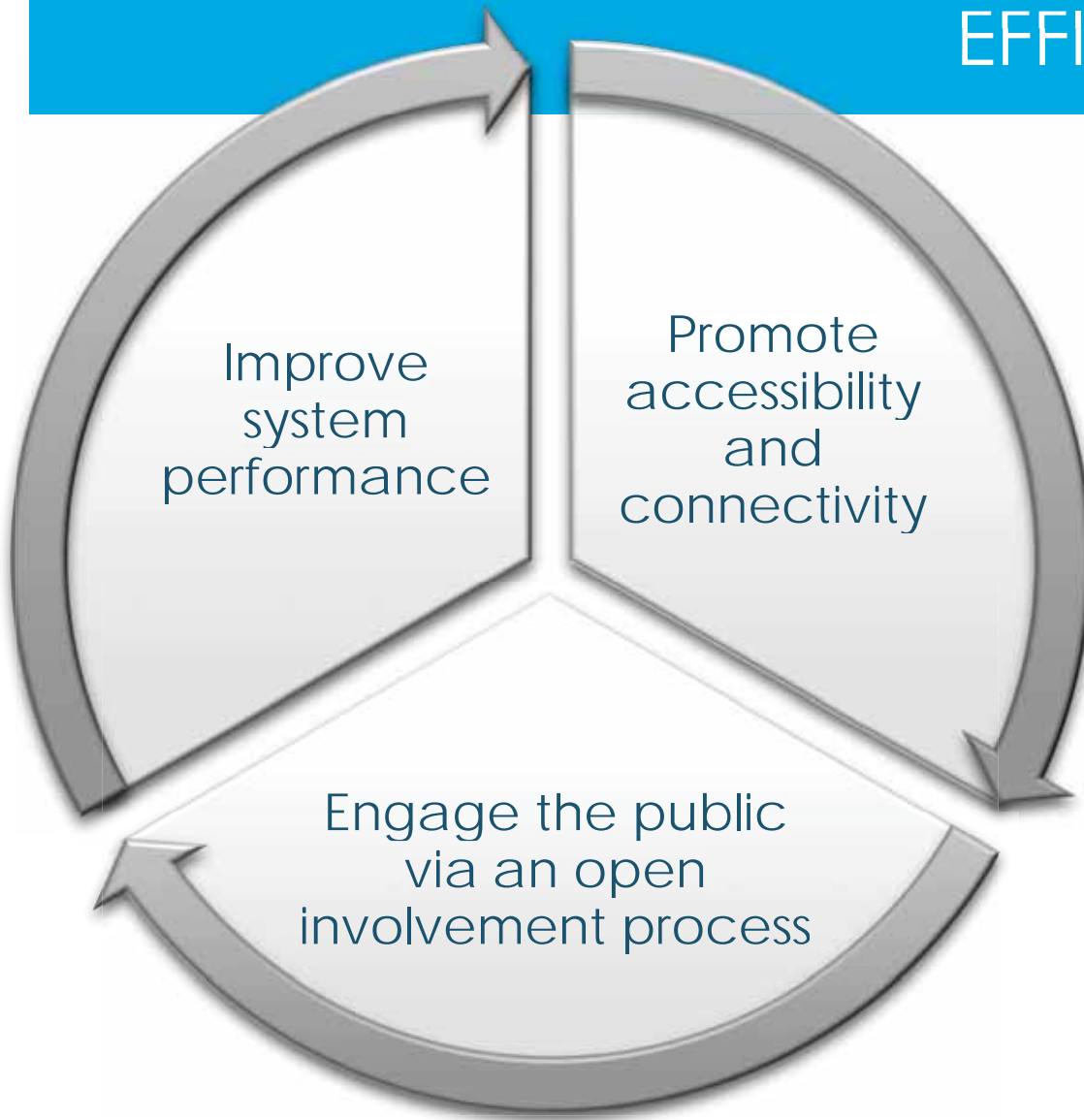
Performance
Measures

GOAL:
SUPPORT SUSTAINABLE ECONOMIC
DEVELOPMENT & GOODS MOVEMENT



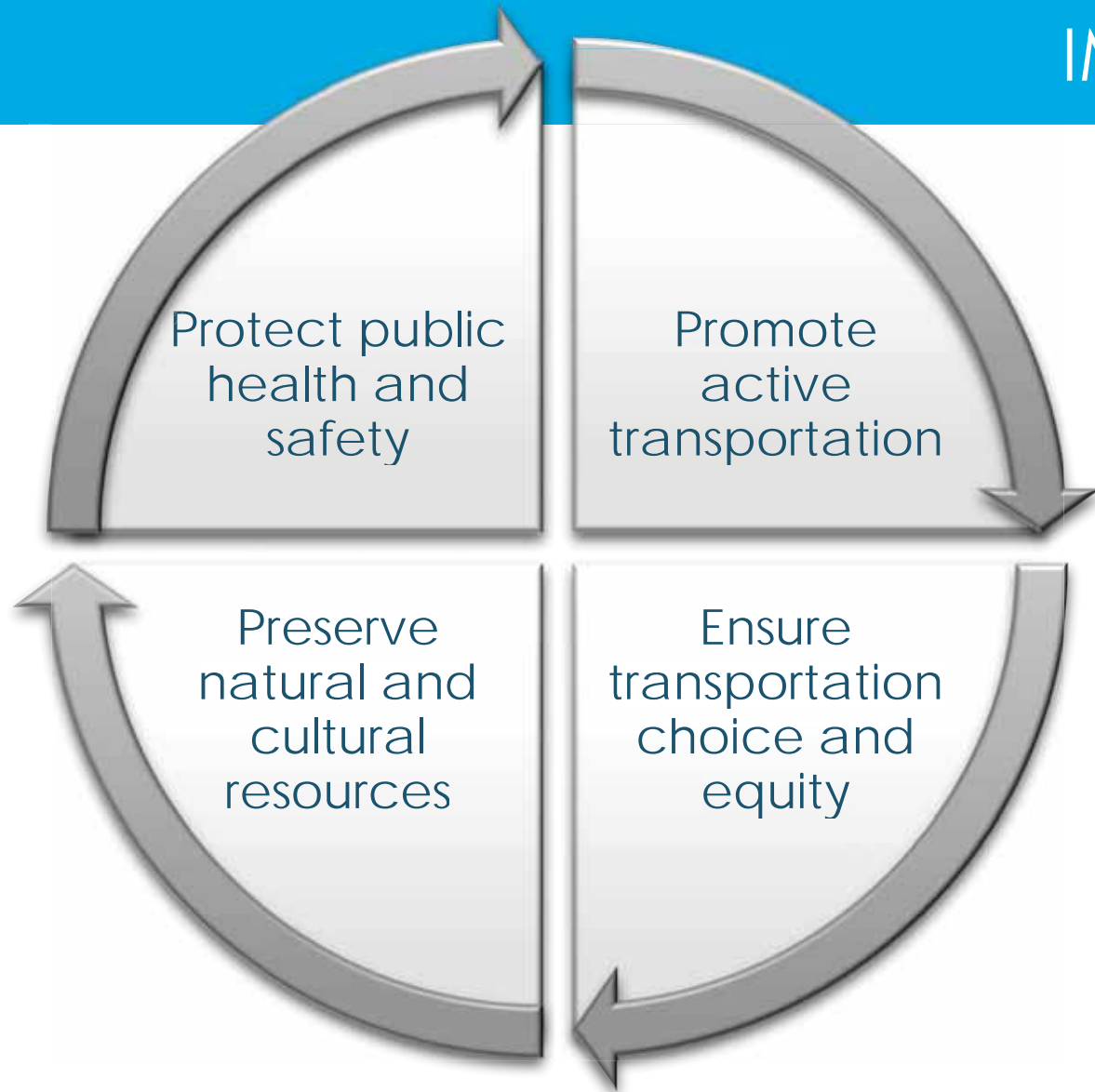
- Plan for responsible development
- Use prioritization process to select transportation projects
- Create and support local plans
- Manage traffic congestion
- Streamline freight
- Support a greener transportation system

GOAL: EFFICIENTLY TRANSPORT PEOPLE



- Start planning for autonomous vehicles
- Improve bus performance
- Fund maintenance projects first
- Plan for seniors, disabled and households w/o cars
- Have robust public participation

GOAL: IMPROVE QUALITY OF LIFE



- Safer transportation for all modes
- Improve connectivity to healthy food, employment, and services
- Promote social equity
- Fund transportation choices
- Protect environment



WHAT DO YOU THINK?

FUNDING PRIORITIES



PUBLIC OPINION ABOUT REGIONAL DEVELOPMENT



 **100%** It's sometimes or always appropriate to mix residential, office, and retail

 **93%** Preserving open space and farmland is important

 **90%** Revitalizing existing communities and downtowns is important

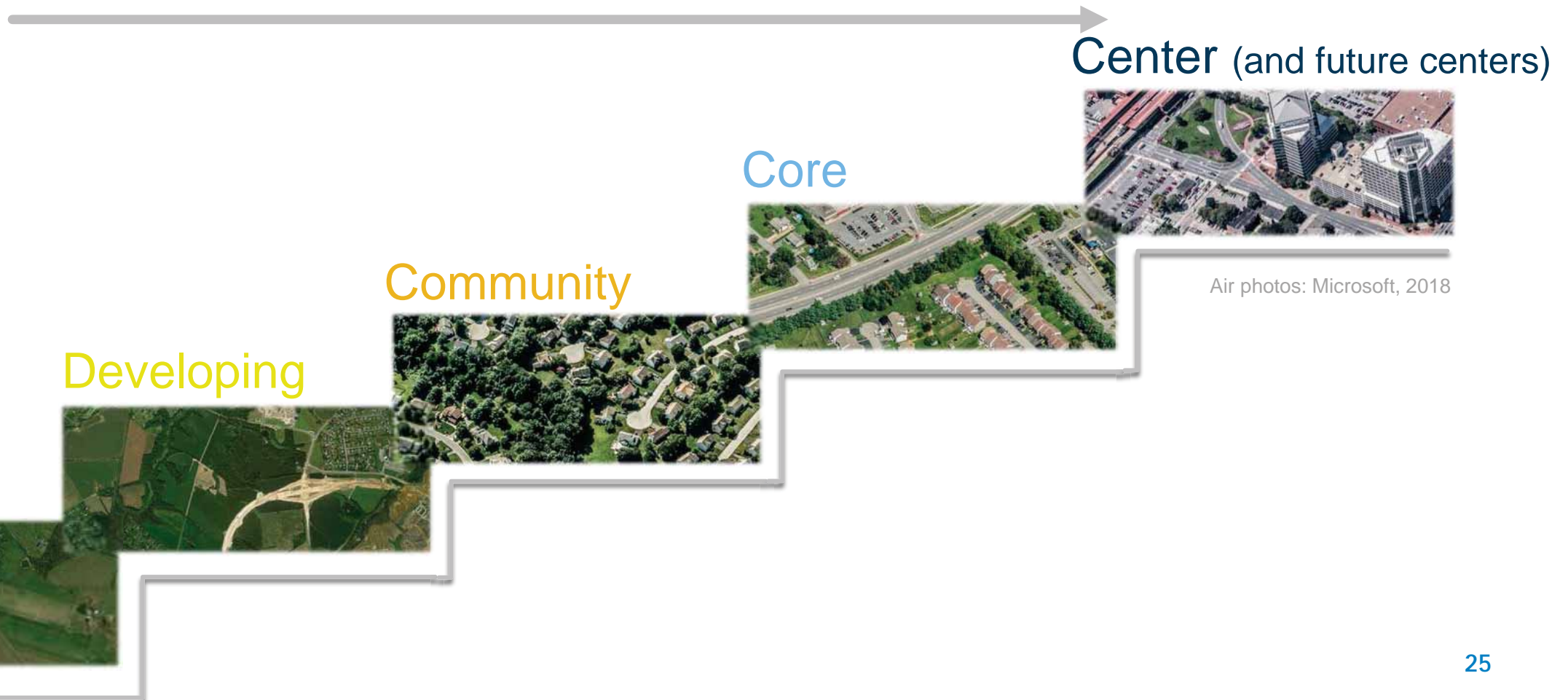
 **81%** Connecting neighborhoods to nearby destinations is important

 **67%** **Development and transportation** projects should be **concentrated to areas with higher population and employment**; projects in rural areas should be limited to safety and system maintenance

RTP: TRANSPORTATION INVESTMENT AREAS



More intensive transportation investments



TRANSPORTATION PRIORITIES



2050 RTP: FEDERAL REQUIREMENTS



- Work to achieve cleaner air quality
- Realistically reflect expected funding
- Include road, transit, pedestrian, and bicycle facilities



2050 RTP: TRANSPORTATION PRIORITIES



Public Transportation - Projects to improve bus and train service/frequency

Example Projects:

- Commuter rail from Perryville - Elkton
- New rail and bus transit centers in Newark, Claymont and Wilmington
- Bus transit park & rides near Christiana Mall and Middletown



2050 RTP: TRANSPORTATION PRIORITIES



Walking and Biking - Projects that improve safety

Example Projects:

- Pedestrian improvements on US 13 and US 40
- East Coast Greenway



RTP: TRANSPORTATION PRIORITIES



Technology - Electric vehicle (EV) charging stations; Driverless vehicles; Signal coordination

Example Projects:

- University of Delaware Autonomous Bus
- Apps with real time travel info



2050 RTP: TRANSPORTATION PRIORITIES



Roadways - Interchange projects; intersection improvements; complete streets; road preservation and safety

Example Projects:

- I-95 interchanges at DE 896 and DE 141, I-295, US 301
- Multimodal projects including North Claymont, DE 9, southern New Castle County roads, MD 213/US 40 intersection, and City of Wilmington streets



Photo courtesy of DelDOT



TELL US MORE ABOUT
YOUR TRANSPORTATION
NEEDS...

WHAT'S NEXT?



NEXT STEPS



- All virtual meeting materials posted online - wilmapco.org/rtp
- Take the 2050 RTP Online Survey – wilmapco.org/rtp
- Share on social media - **@wilmapco** and **#2050RTP**
- Attend Our Town Conference - **February 7, 2019**
- Invite WILMAPCO to present to your group
- Public comment begins January 15, 2019
- Council adoption expected March 2019

QUESTIONS?



THANK YOU FOR YOUR PARTICIPATION!



www.wilmapco.org/rtp

Phone: (302) 737-6205

Email: wilmapco@wilmapco.org

#2050RTP



@WILMAPCO